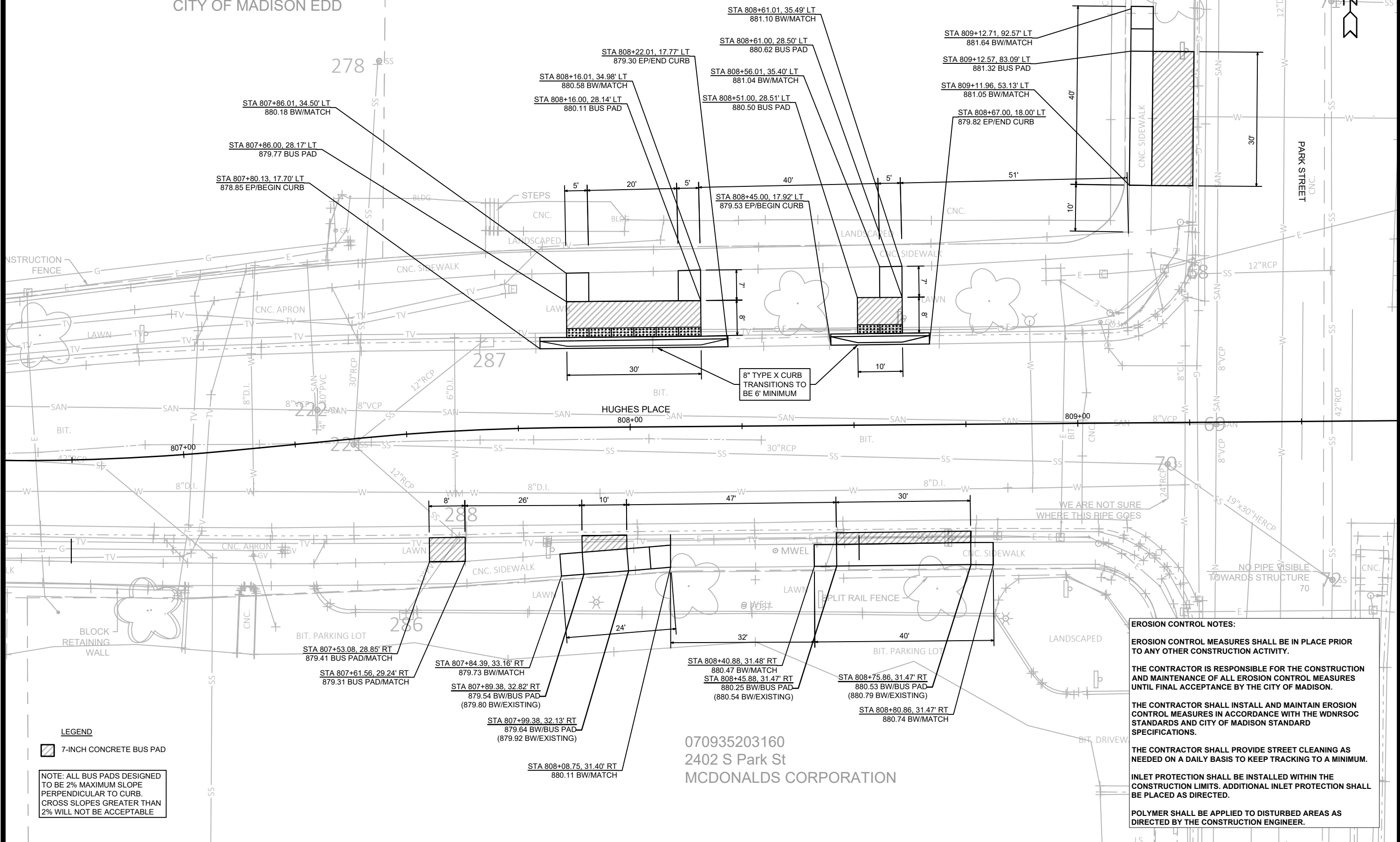


070935204069  
2300 S Park St  
CITY OF MADISON CDA  
CITY OF MADISON EDD

070935204093  
2352 S Park St Unit CDM  
BLACK BUSINESS HUB CDM  
ULGM REAL ESTATE

REVISION 1: MFG 7/09/25  
SHEET CREATED



LEGEND

7-INCH CONCRETE BUS PAD

NOTE: ALL BUS PADS DESIGNED TO BE 2% MAXIMUM SLOPE PERPENDICULAR TO CURB. CROSS SLOPES GREATER THAN 2% WILL NOT BE ACCEPTABLE

EROSION CONTROL NOTES:

EROSION CONTROL MEASURES SHALL BE IN PLACE PRIOR TO ANY OTHER CONSTRUCTION ACTIVITY.

THE CONTRACTOR IS RESPONSIBLE FOR THE CONSTRUCTION AND MAINTENANCE OF ALL EROSION CONTROL MEASURES UNTIL FINAL ACCEPTANCE BY THE CITY OF MADISON.

THE CONTRACTOR SHALL INSTALL AND MAINTAIN EROSION CONTROL MEASURES IN ACCORDANCE WITH THE WDNR SOC STANDARDS AND CITY OF MADISON STANDARD SPECIFICATIONS.

THE CONTRACTOR SHALL PROVIDE STREET CLEANING AS NEEDED ON A DAILY BASIS TO KEEP TRACKING TO A MINIMUM.

INLET PROTECTION SHALL BE INSTALLED WITHIN THE CONSTRUCTION LIMITS. ADDITIONAL INLET PROTECTION SHALL BE PLACED AS DIRECTED.

POLYMER SHALL BE APPLIED TO DISTURBED AREAS AS DIRECTED BY THE CONSTRUCTION ENGINEER.

15200

MADISON, WI

CONTRACT NO: 8800

METRO BUS PADS - PARK & HUGHES

SAFE STREETS 2025

15200

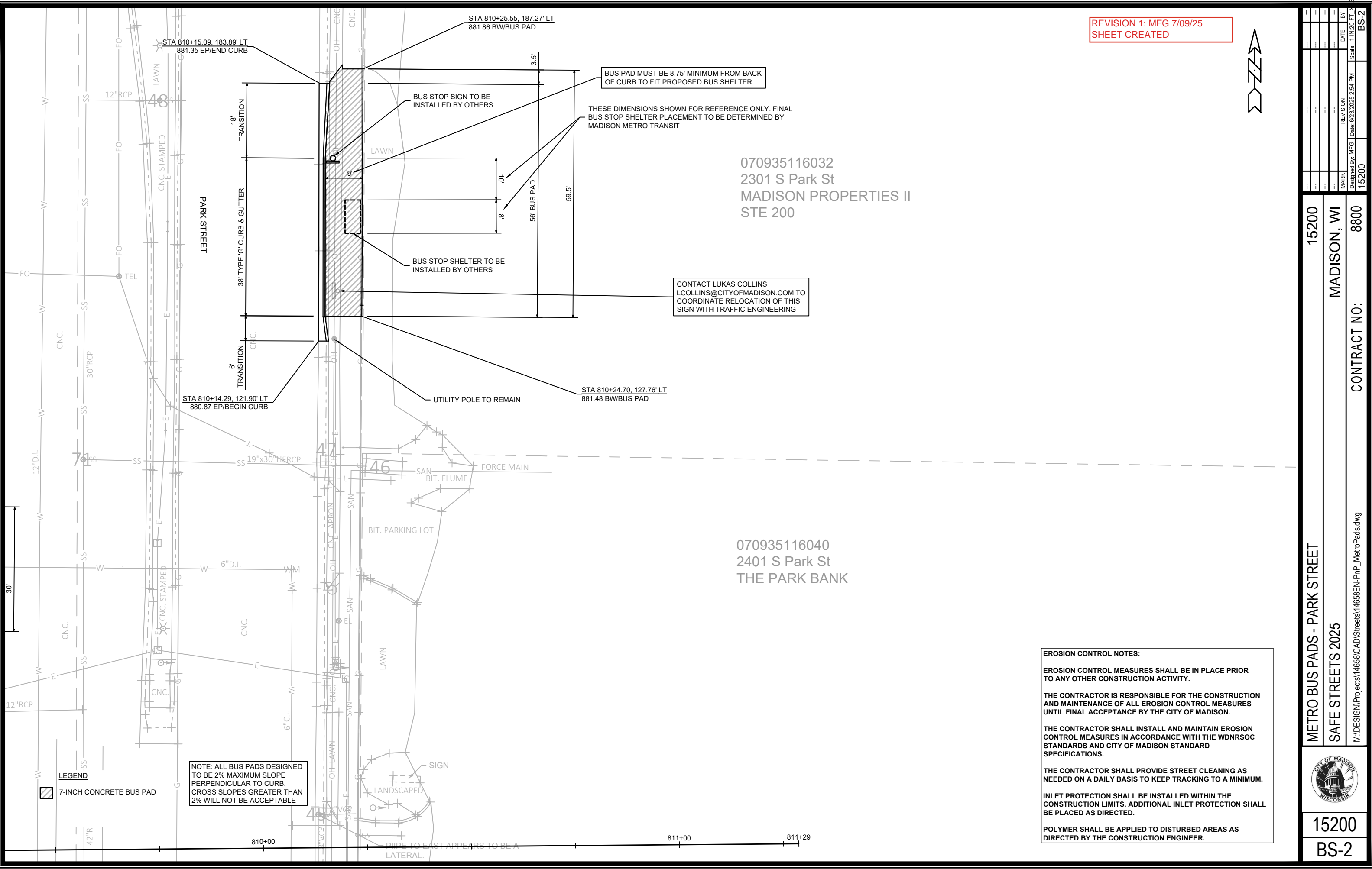
BS-1

MARK	REVISION	DATE	BY
1	1	7/9/25	BS-1

Scale: 1"=20' X REF

Designed By: MFG Date: 6/23/2025 2:53 PM

M:\DESIGN\Projects\14658\CAD\Streets\14658EN-PnP\_MetroPads.dwg



REVISION 1: MFG 7/09/25  
SHEET CREATED



DATE	BY
REVISION	DATE
MARK	DATE
DESIGNED BY: MFG	DATE: 6/23/2025 2:54 PM
15200	1 IN 20 FT
BS-2	

15200  
MADISON, WI  
8800  
CONTRACT NO:

METRO BUS PADS - PARK STREET  
SAFE STREETS 2025  
M:\DESIGN\Projects\14658\CAD\Streets\14658EN-PnP\_MetroPads.dwg



15200  
BS-2

**EROSION CONTROL NOTES:**

EROSION CONTROL MEASURES SHALL BE IN PLACE PRIOR TO ANY OTHER CONSTRUCTION ACTIVITY.

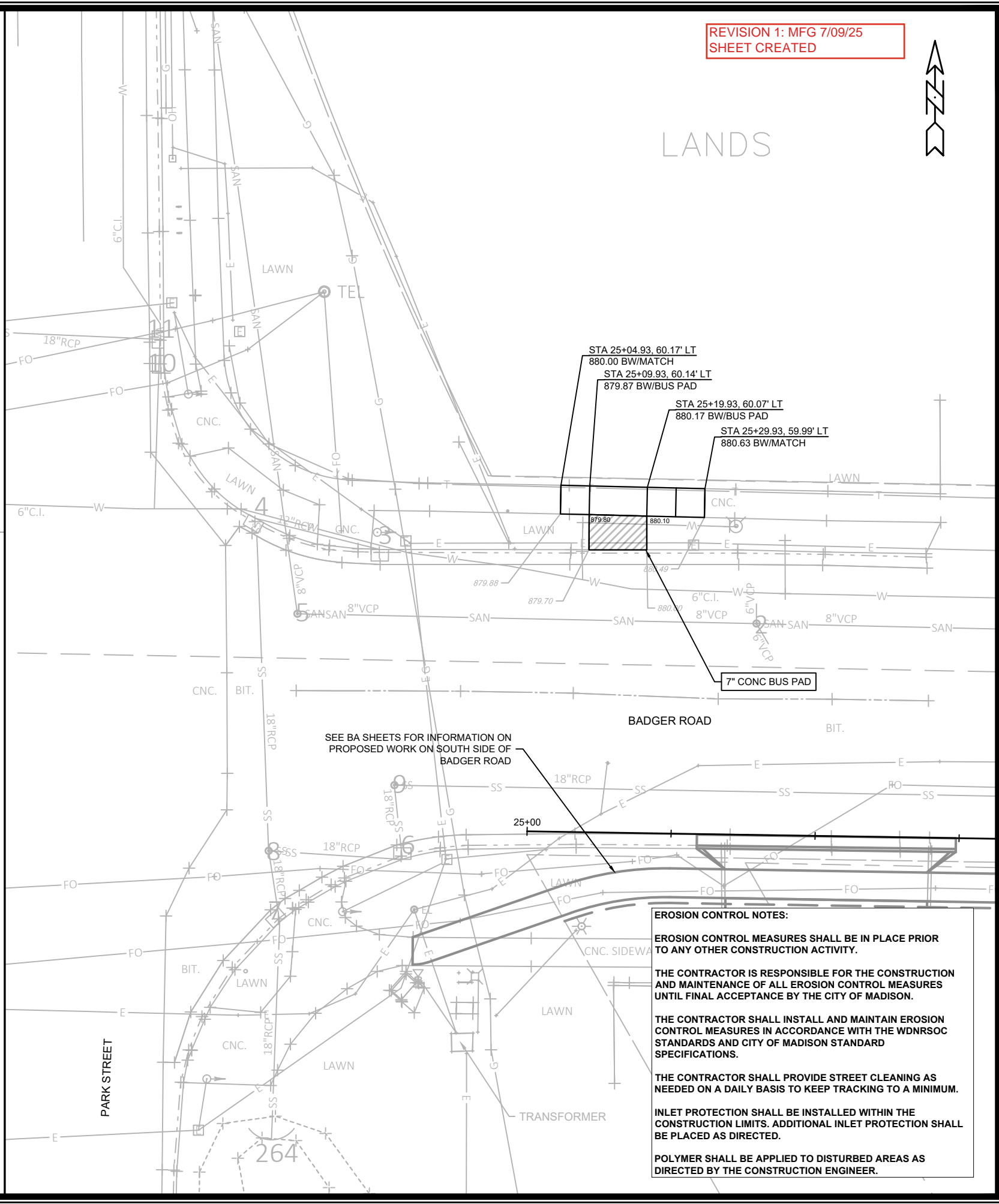
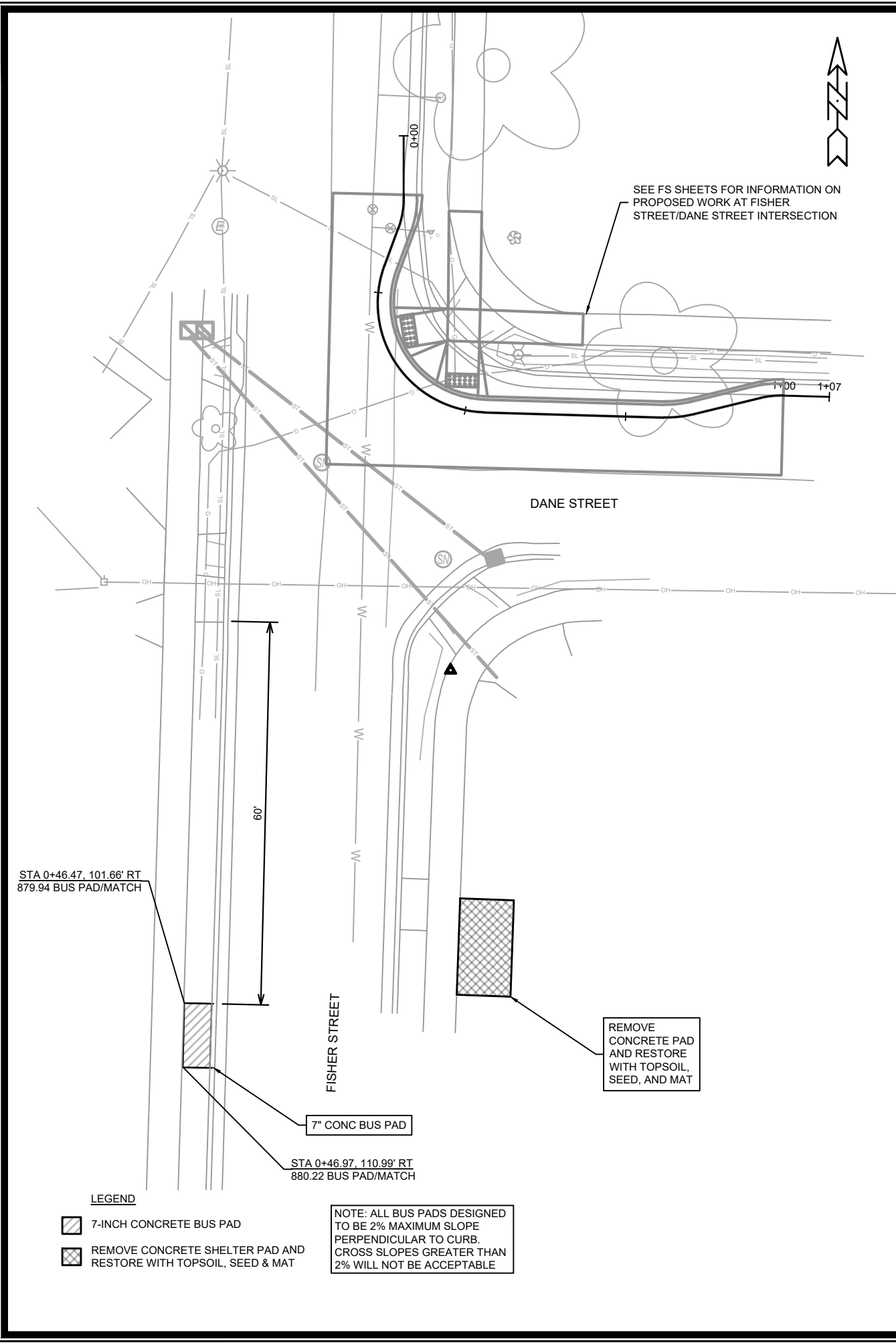
THE CONTRACTOR IS RESPONSIBLE FOR THE CONSTRUCTION AND MAINTENANCE OF ALL EROSION CONTROL MEASURES UNTIL FINAL ACCEPTANCE BY THE CITY OF MADISON.

THE CONTRACTOR SHALL INSTALL AND MAINTAIN EROSION CONTROL MEASURES IN ACCORDANCE WITH THE WDNR SOC STANDARDS AND CITY OF MADISON STANDARD SPECIFICATIONS.

THE CONTRACTOR SHALL PROVIDE STREET CLEANING AS NEEDED ON A DAILY BASIS TO KEEP TRACKING TO A MINIMUM.

INLET PROTECTION SHALL BE INSTALLED WITHIN THE CONSTRUCTION LIMITS. ADDITIONAL INLET PROTECTION SHALL BE PLACED AS DIRECTED.

POLYMER SHALL BE APPLIED TO DISTURBED AREAS AS DIRECTED BY THE CONSTRUCTION ENGINEER.



REVISION 1: MFG 7/09/25  
SHEET CREATED

LANDS

BADGER ROAD

PARK STREET

**EROSION CONTROL NOTES:**

EROSION CONTROL MEASURES SHALL BE IN PLACE PRIOR TO ANY OTHER CONSTRUCTION ACTIVITY.

THE CONTRACTOR IS RESPONSIBLE FOR THE CONSTRUCTION AND MAINTENANCE OF ALL EROSION CONTROL MEASURES UNTIL FINAL ACCEPTANCE BY THE CITY OF MADISON.

THE CONTRACTOR SHALL INSTALL AND MAINTAIN EROSION CONTROL MEASURES IN ACCORDANCE WITH THE WDNR SOC STANDARDS AND CITY OF MADISON STANDARD SPECIFICATIONS.

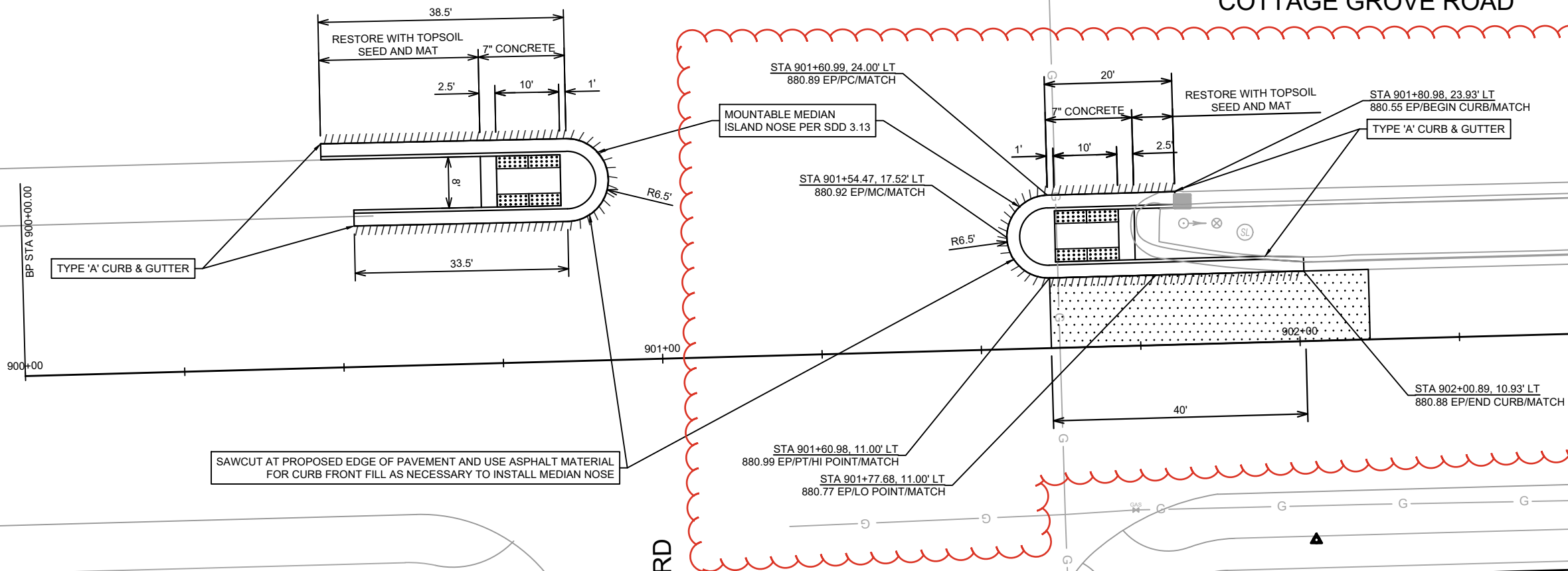
THE CONTRACTOR SHALL PROVIDE STREET CLEANING AS NEEDED ON A DAILY BASIS TO KEEP TRACKING TO A MINIMUM.

INLET PROTECTION SHALL BE INSTALLED WITHIN THE CONSTRUCTION LIMITS. ADDITIONAL INLET PROTECTION SHALL BE PLACED AS DIRECTED.

POLYMER SHALL BE APPLIED TO DISTURBED AREAS AS DIRECTED BY THE CONSTRUCTION ENGINEER.

15200		MADISON, WI		CONTRACT NO: 8800	
SAFE STREETS 2025		METSU BUS PADS - FISHER AND BADGER		BS-3	
CITY OF MADISON WISCONSIN		M:\DESIGN\Projects\14658\CAD\Streets\14658EN-PnP_MetroPads.dwg		15200	
15200		BS-3		15200	

REVISION 2: MFG 7/30/25  
ADDED EAST SIDE OF  
INTERSECTION



ACEWOOD BOULEVARD

COTTAGE GROVE ROAD

LEGEND

- ////// SAWCUT ASPHALT PAVEMENT
- 2" FULL WIDTH GRINDING HMA PAVEMENT 4LT 58-28 S

NOTES:

- RESTORE DISTURBED MEDIAN WITH TOPSOIL SEED AND MAT
- ISLAND LIMITS TO BE MARKED IN FIELD BY TRAFFIC ENGINEERING. CONTACT LUKAS COLLINS AT LCOLLINS@CITYOFMADISON.COM OR (608) 261-9625
- FINAL ASPHALT PATCHING LIMITS TO BE DETERMINED IN FIELD BY CONSTRUCTION ENGINEER
- RADII DIMENSIONED TO EDGE OF PAVEMENT
- MOUNTABLE MEDIAN ISLAND NOSE PER SDD 3.13

EROSION CONTROL NOTES:

EROSION CONTROL MEASURES SHALL BE IN PLACE PRIOR TO ANY OTHER CONSTRUCTION ACTIVITY.

THE CONTRACTOR IS RESPONSIBLE FOR THE CONSTRUCTION AND MAINTENANCE OF ALL EROSION CONTROL MEASURES UNTIL FINAL ACCEPTANCE BY THE CITY OF MADISON.

THE CONTRACTOR SHALL INSTALL AND MAINTAIN EROSION CONTROL MEASURES IN ACCORDANCE WITH THE WDNR SOC STANDARDS AND CITY OF MADISON STANDARD SPECIFICATIONS.

THE CONTRACTOR SHALL PROVIDE STREET CLEANING AS NEEDED ON A DAILY BASIS TO KEEP TRACKING TO A MINIMUM.

INLET PROTECTION SHALL BE INSTALLED WITHIN THE CONSTRUCTION LIMITS. ADDITIONAL INLET PROTECTION SHALL BE PLACED AS DIRECTED.

POLYMER SHALL BE APPLIED TO DISTURBED AREAS AS DIRECTED BY THE CONSTRUCTION ENGINEER.

COTTAGE GROVE ACEWOOD PLAN

SAFE STREETS 2025

15200

MADISON, WI

\\gisserver\data\DESIGN\Projects\14658\EN-P\IP\_Cottage\_Grove\_Acewood.dwg

CONTRACT NO:

8800

MARK	REVISION	DATE	BY
15200	1	7/10/2025	9:16 AM
CG-1	1	7/30/25	



15200

CG-1