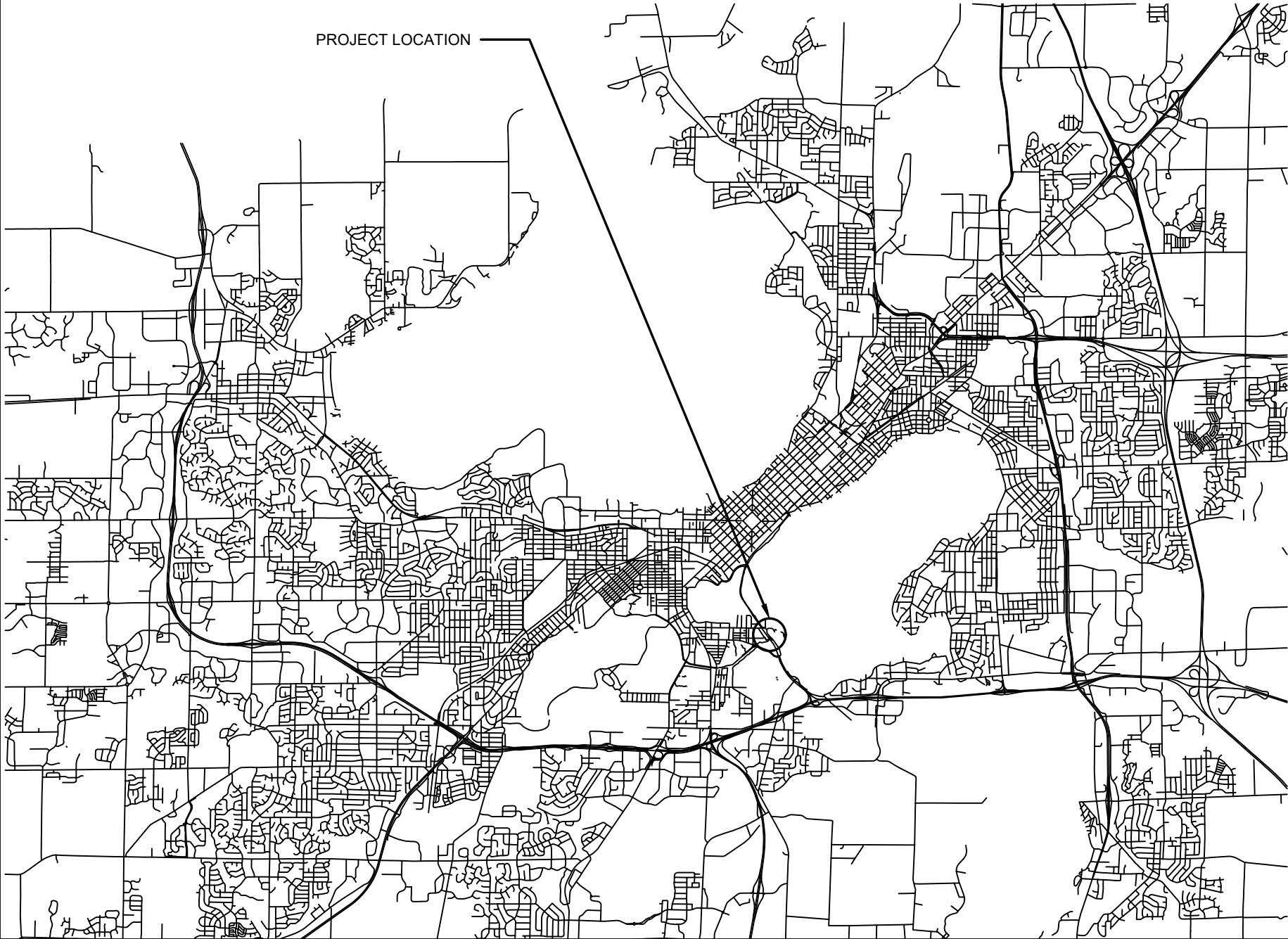


OLIN PARK PEDESTRIAN BRIDGE REPLACEMENT

CONTRACT NO: 9679



BRIDGE DESIGNED BY:

City of Madison
Department of Public Works
PARKS DIVISION
330 E Lakeside St
Madison, WI 53715

play
**MADISON
PARKS**



INDEX

SHEET NO T1 TITLE
SHEET NO S1 SITE PLAN
SHEET NO S2 CROSS SECTION, NOTES, & DETAILS

PROJECT:

*OLIN PARK
PEDESTRIAN BRIDGE
REPLACEMENT*

PROJECT ADDRESS:

*OLIN PARK
1156 OLIN-TURVILLE CT
MADISON, WI 53705*

Although every effort has been made in preparing these plans and checking them for accuracy, the contractor and subcontractors must check all details and dimensions of their trade and be responsible for the same.

ITEM	DATE
ADVERTISED	XX-XX-2025

PUBLIC WORKS PROJECT #:
14601

SHEET TITLE:
TITLE

SHEET NUMBER:
T1

FOR REVIEW
7/24/2025



DESIGN DATA

DESIGN LOADS:
90 PSF PEDESTRIAN LOAD
10,000 LB. VEHICLE LOAD (H-5)
35 PSF WIND LOAD (AS IF ENCLOSED)
20 PSF WIND UPLIFT

MATERIAL DESIGN PROPERTIES:
HIGH STRENGTH STRUCTURAL STEEL
ASTM A847, ASTM A588, ASTM A606,
ASTM A709 OR ASTM A242 fy = 50,000 psi

FOUNDATION DATA:
EXISTING ABUTMENTS SHALL REMAIN. CONTRACTOR SHALL
DETERMINE REUSE OF EXISTING ANCHOR BOLTS FOR NEW
BRIDGE OR REMOVE AND INSTALL NEW ADHESIVE ANCHOR
RODS.

HYDRAULIC DATA

PROPOSED PROFILE TO GENERALLY MATCH EXISTING BRIDGE
PROFILE.

DESIGN CONTACT

STRAND ASSOCIATES, INC
TYLER EVERSON PH: (608) 251-4843

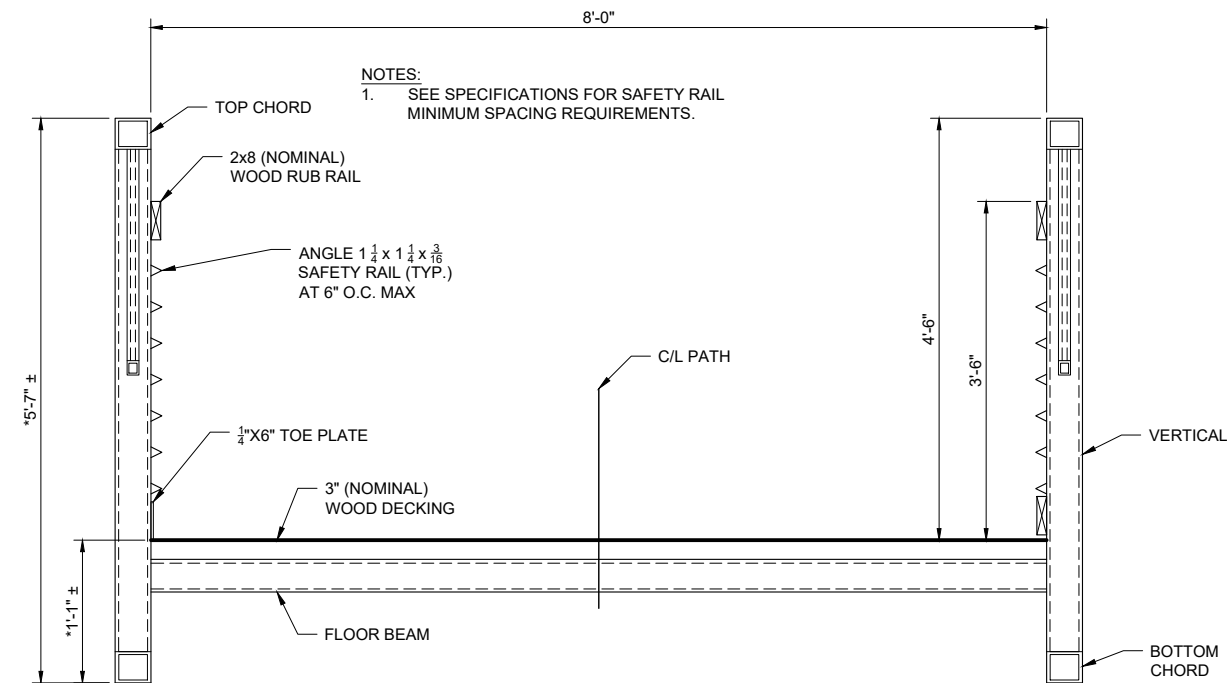
MARK	DESIGNED BY	DATE	REVISION	DATE	BY
	LJE	7/24/2025	9:43 AM		

SITE PLAN	MADISON, WI
OLIN PARK PEDESTRIAN BRIDGE REPLACEMENT	CONTRACT NO:
MAD\1020\134\Drawings\CAD\Pheasant Branch Greenway Ped. Bridge\Sheets\X-border.dwg	



14601
S1

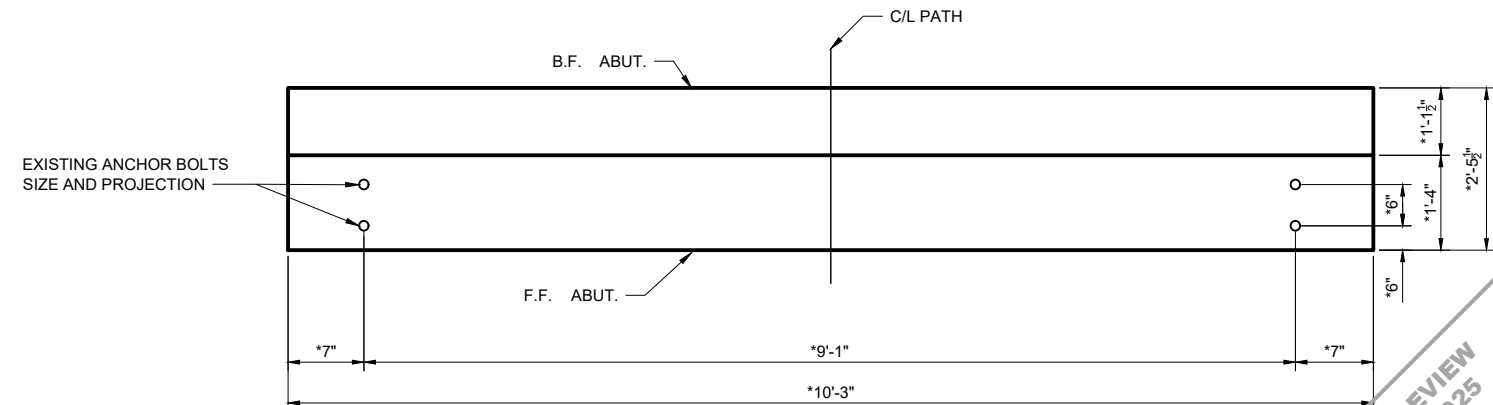
FOR REVIEW
7/24/2025



Technical drawing showing the cross-sections of the bridge abutments and backwall. The drawing includes the following dimensions and labels:

- Dimensions:**
 - Overall width: $\approx 1'-1\frac{1}{2}"$
 - Backwall width: $\approx 65'-2"$
 - Bridge length: $\approx 65'-0"$
 - Abutment width: $\approx 9"$
- Labels:**
 - F.F. ABUT. BACKWALL**: Front Face of Abutment Backwall.
 - B.F. N. ABUT.**: Back Face of North Abutment.
 - B.F. S. ABUT.**: Back Face of South Abutment.
 - BEARING PLATE**: The plate supporting the bridge deck.
 - EXISTING ANCHOR BOLTS**: Bolts securing the abutment to the foundation.
 - BEARING PAD**: The pad supporting the abutment.
 - ELEV. ≈ 100.00** : Elevation of the North Abutment.
 - ELEV. ≈ 101.41** : Elevation of the South Abutment.

* ALL DIMENSIONS OF EXISTING BRIDGE AND ABUTMENTS ARE APPROXIMATE AND TO BE FIELD VERIFIED BY CONTRACTOR



7"

BID ITEM NUMBER*	BID ITEMS	UNIT	TOTAL
90101	PREFABRICATED STEEL TRUSS PEDESTRIAN BRIDGE	EACH	1

[illegible]

14601
S2