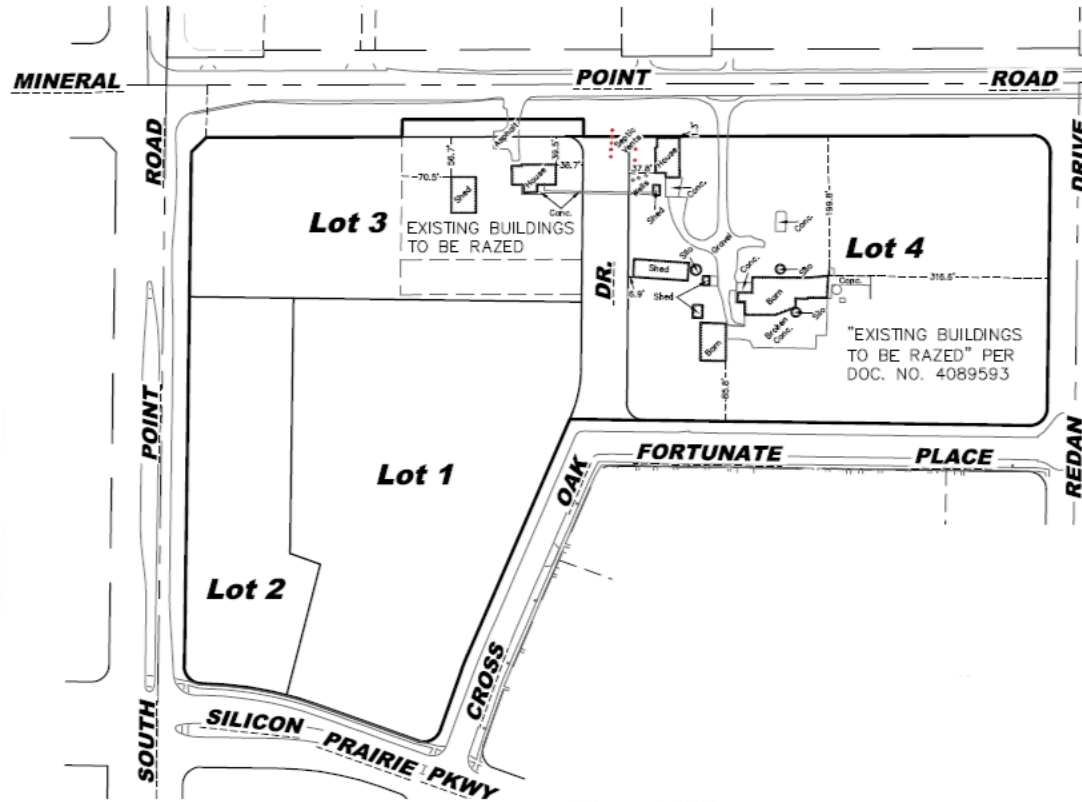


**TWO POINT CROSSING CSM**  
(9301-9317 Mineral Point Road and 9450 Silicon Prairie Parkway)  
Contract 8517



**Improvements to Lots 1-3**

**\*Public Sidewalk Installation**

- South Point Rd (adj. to Lots 2 and 3)
- Silicon Prairie Pkwy (adj. to Lots 1 and 2)
- Cross Oak Dr (adj. to Lot 1)

**\*Utility connections**

**\*Ingress/egress to development including tapers and installation of island at Mineral Pt. Rd/Cross Oak Dr. to allow for Right-in/Right-out/Left-in access (Left-outs will be prohibited)**

**\*Multi-use path (10' in width) along Mineral Point Rd (adj. to Lot 3)**

**\*Complete street construction of new Cross Oak Dr. between Mineral Pt. Rd and Fortunate Place**

**-66' Right of Way dedication**

Street = 36' face to face

Public sidewalks = 5' each side of street

Terrace = 9' each side of street

1' behind walk to property line each side of street

**Addendum No. 1: Extend contract timeframe by twenty-eight (28) months; all other plan requirements remain**