

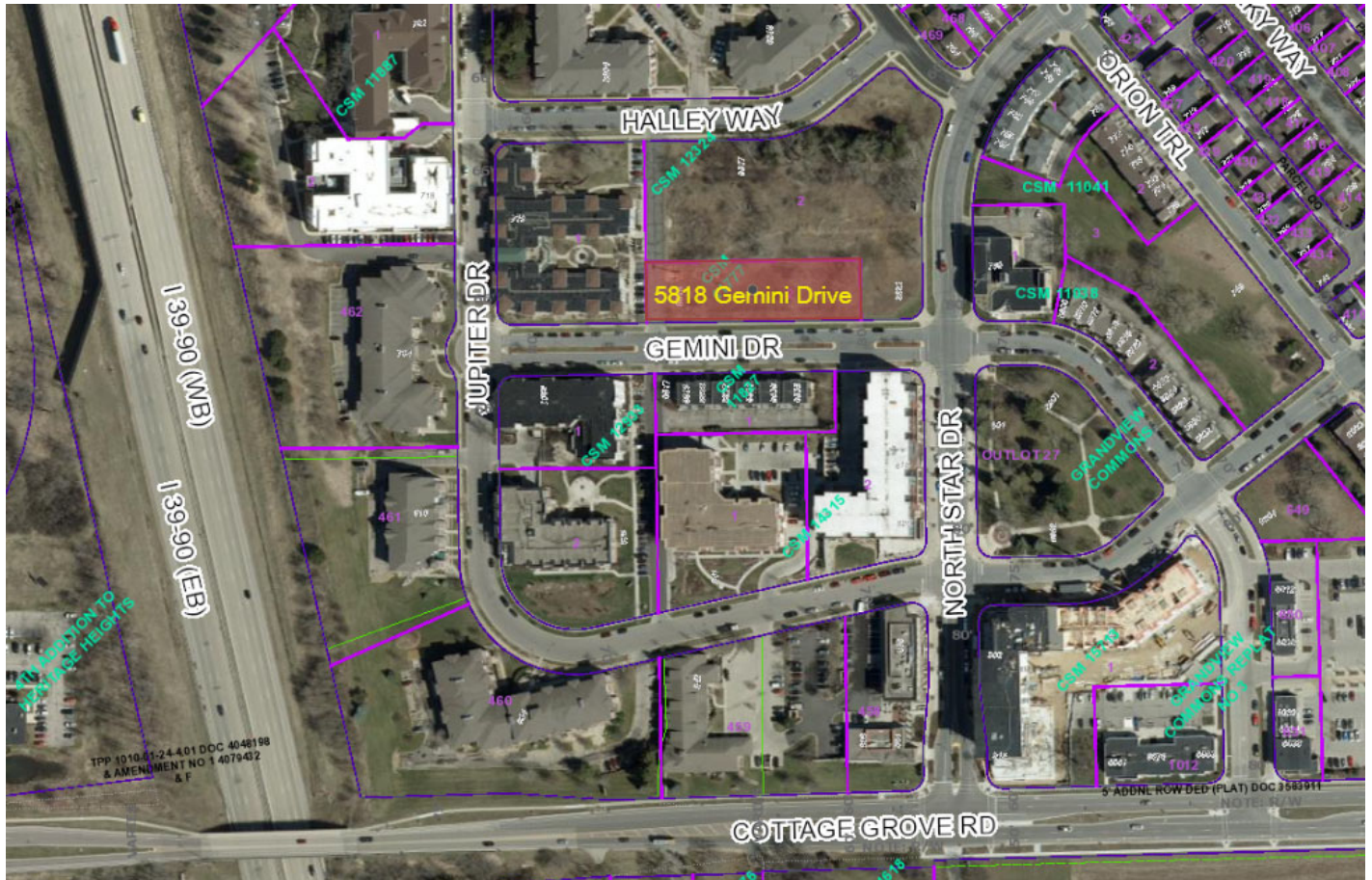
Private Development Project

5818 Gemini Drive

Contract No.: 9609

Project No.: 15595

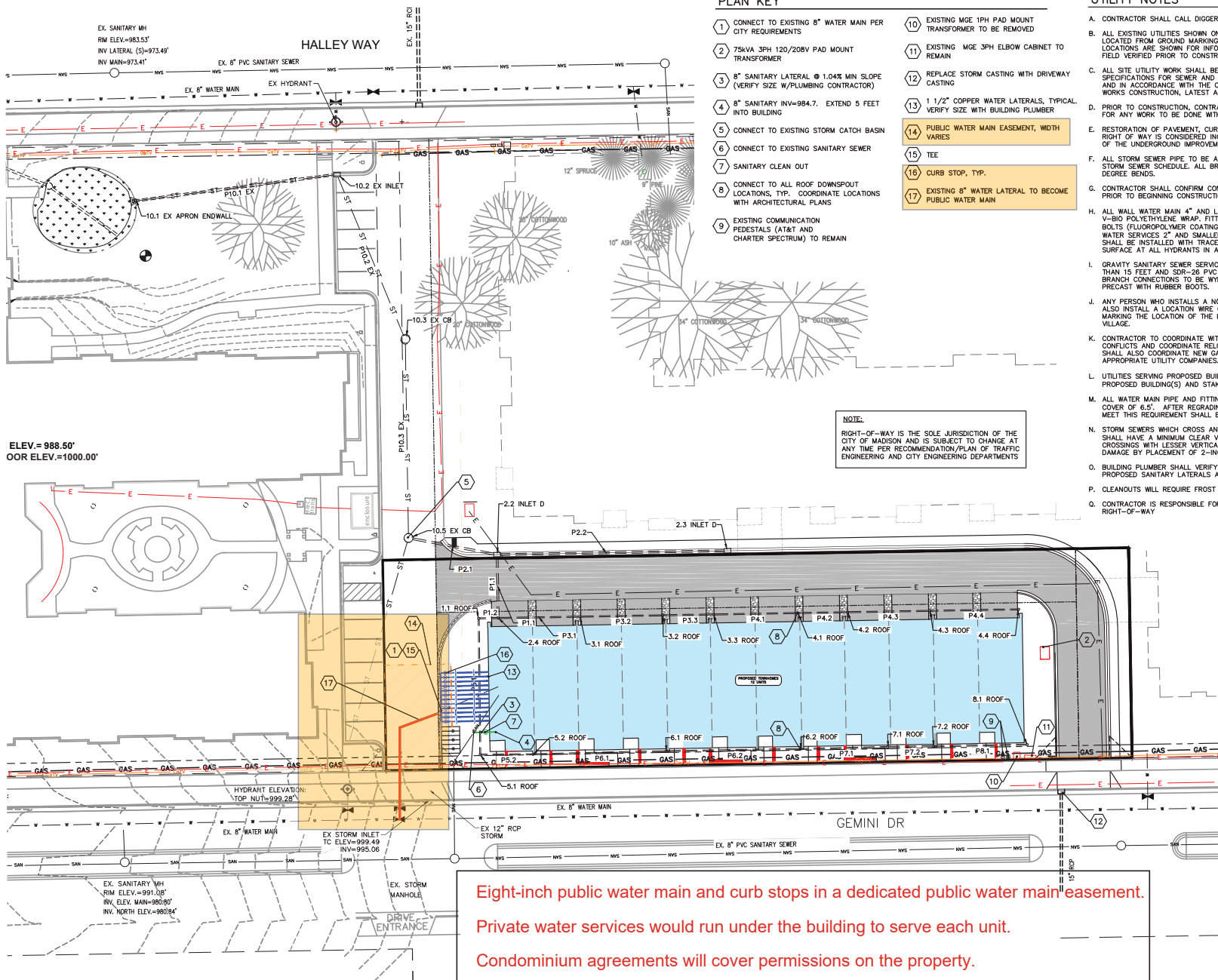
Developer: Alternative Continuum of Care of Dakota Dunes, LLC



Alternative Continuum of Care of Dakota Dunes, LLC, developer of 5818 Gemini Drive, has been conditionally approved to construct a 12-unit townhouse condominium located at 5818 Gemini Drive. The developer shall dedicate a public water main easement for an 8" public main and curb stops to serve the development. The developer shall reconstruct public sidewalk on Gemini Drive adjacent to the property.

Developer Agreement Items:

- Dedication of public water main easement
- Reconstruction of public sidewalk





NORTH ELEVATION



SOUTH ELEVATION

EXTERIOR FINISH SCHEDULE		
BOX	MATERIAL / MANUFACTURER	DESCRIPTION / COLOR
A1	C COMPOSITE LAM SIDING / LP SMARTSIDE	GLASSY GRAY
A2	C COMPOSITE BOARD AND BATTEN SIDING / LP SMARTSIDE	CUSTOM COLOR - JACOB'S STONE
A3	ALUMINUM SIDING / LONGBOARD SCOTT	DARK CHERRY
B1	STONE VENEER / FOND DU LAC STONE	DIMENSIONAL
B2	MANUP STONE CAP / FOND DU LAC STONE	DIMENSIONAL
C1	COMPOSITE WOOD TRIM / LP SMARTSIDE	LANDSCAPE WHITE
D1	PREFIN ALUMINUM GUTTER	
D2	PREFIN ALUMINUM DOWNSPOUT	
D3	PREFIN ALUMINUM COPING	
D4	PREFIN ALUMINUM FASCIA BOARD COVER	
E1	LANDSCAPE PLANTER	
F1	GLASS PANEL RAILING	
G1	OUTDOOR PRIVACY SCREEN	



EAST ELEVATION



WEST ELEVATION

ZONING SUBMITTAL NOT FOR CONSTRUCTION

CLIENT
OAK PARK PLACE

PROJECT
**CAPITOL VIEW
TOWNHOUSES**

MADISON, WI

DRAWN BY
M.BUSCHKOPF
CHECKED BY
B.SERVIN
DATE
07/12/2024
JOB NUMBER
21-051

BID SET | VOLUME
ZONING SUBMITTAL

SHEET NAME
COLORED ELEVATIONS

SHEET NUMBER

A401