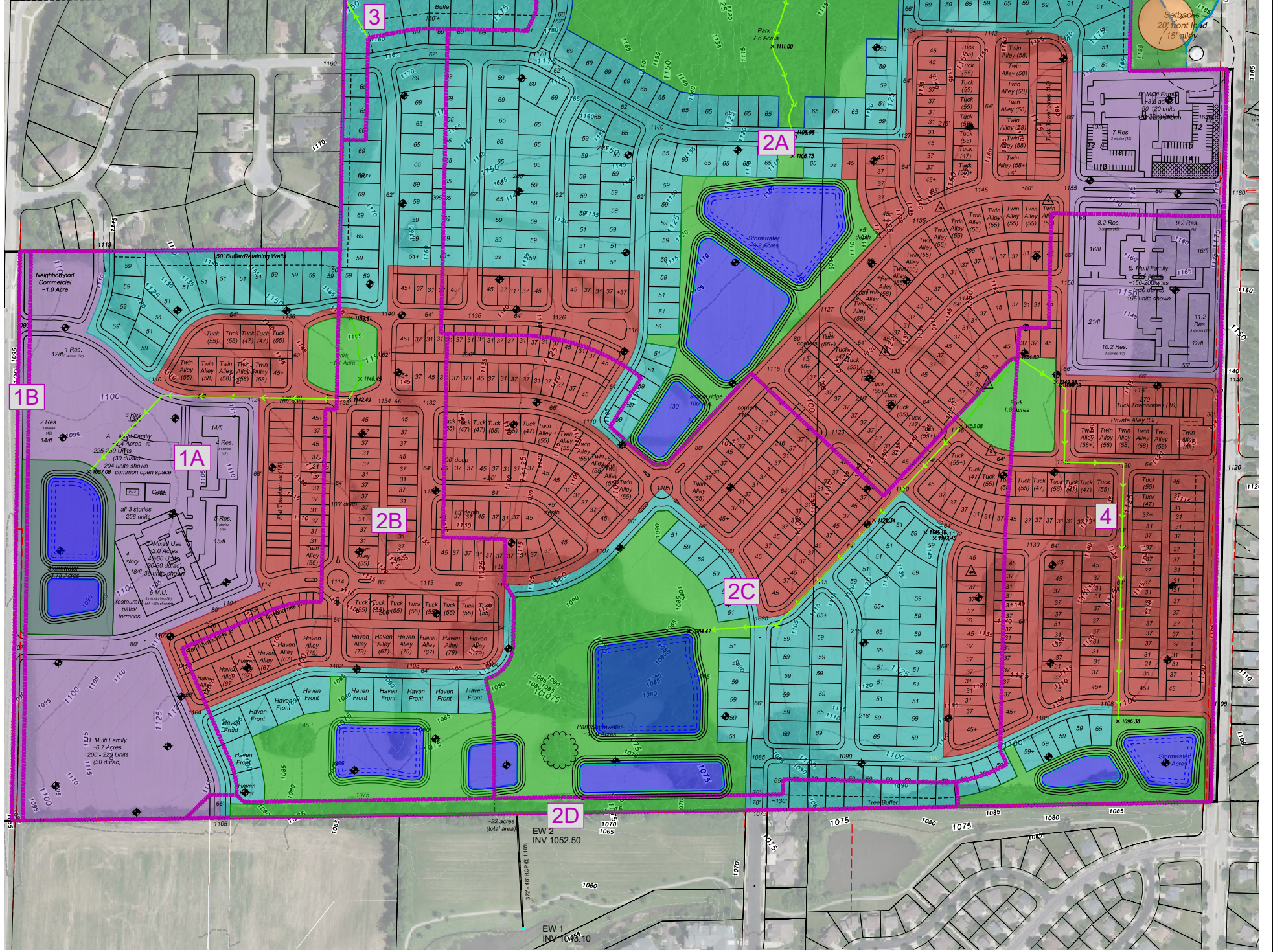


File: U:\User12\104102\Engineering\SM\104102\SWMP.dwg Exhibit 6.2 Printed: Oct 02, 2024 - 8:25am

POND DATA									
WEST BASIN SYSTEM									
WET BASIN: BOTTOM=1074.0, OUTLET = 1081.0, TOP OF BERM = 1087.0 (3P)									
DISCHARGE RATE	11.32	14.01	19.22	24.09	40.75	118.08	157.15	214.91	
PEAK BASIN ELEVATION	1083.12	1083.51	1084.18	1084.85	1085.70	1086.23	1086.42	1086.67	
INFILTRATION BASIN: BOTTOM = 1080.0, OUTLET = 1081.0, TOP OF BERM = 1087.0 (9P)									
DISCHARGE RATE (TO R/W BASIN)	7.16	9.55	14.58	20.62	28.23	59.11	111.62	185.76	
PEAK BASIN ELEVATION	1082.59	1082.95	1083.32	1083.60	1083.90	1085.96	1086.50	1086.88	
CENTRAL-NORTH BASIN SYSTEM									
WET BASIN: BOTTOM=1102.0, OUTLET = 1109.0, TOP OF BERM = 1115.0 (1P)									
DISCHARGE RATE	9.02	11.40	14.85	47.54	133.29	250.33	294.90	362.16	
PEAK BASIN ELEVATION	1111.42	1111.97	1113.00	1113.62	1113.78	1113.94	1113.99	1114.06	
UPPER INFILTRATION BASIN: BOTTOM = 1108.0, OUTLET = 1109.0, TOP OF BERM = 1115.0 (5P)									
DISCHARGE RATE (TO R/W BASIN)	4.13	4.82	6.03	11.55	18.84	47.51	120.09	244.62	
PEAK BASIN ELEVATION	1109.38	1109.97	1111.08	1111.49	1111.85	1114.40	1114.48	1114.91	
LOWER INFILTRATION BASIN: BOTTOM = 1088.0, OUTLET = 1089.0, TOP OF BERM = 1105.0 (13P)									
DISCHARGE RATE (TO R/W BASIN)	0.28	0.31	0.94	5.75	11.72	34.59	82.96	219.72	
PEAK BASIN ELEVATION	1088.08	1088.65	1089.65	1101.39	1101.72	1103.30	1104.29	1104.74	
CENTRAL-SOUTHWEST BASIN SYSTEM									
WET BASIN: BOTTOM=1089.0, OUTLET = 1096.0, TOP OF BERM = 1102.0 (2P)									
DISCHARGE RATE	3.22	3.94	4.96	5.89	7.00	34.21	56.83	93.38	
PEAK BASIN ELEVATION	1097.74	1098.11	1098.77	1099.48	1100.50	1101.35	1101.51	1101.72	
INFILTRATION BASIN: BOTTOM = 1089.0, OUTLET = 1070.0, TOP OF BERM = 1076.0 (7P)									
DISCHARGE RATE (TO R/W BASIN)	1.42	1.83	3.63	4.80	5.54	7.08	17.86	62.78	
PEAK BASIN ELEVATION	1071.50	1072.05	1072.28	1072.41	1072.65	1074.06	1075.07	1075.23	
CENTRAL-SOUTHEAST BASIN SYSTEM									
WET BASIN: BOTTOM=1088.0, OUTLET = 1075.0, TOP OF BERM = 1081.0 (11P)									
DISCHARGE RATE	4.77	6.18	8.65	11.22	14.22	27.92	57.52	111.57	
PEAK BASIN ELEVATION	1076.49	1076.80	1077.35	1077.93	1078.79	1080.18	1080.44	1080.75	
INFILTRATION BASIN: BOTTOM = 1065.0, OUTLET = 1072.0, TOP OF BERM = 1072.0 (12P)									
DISCHARGE RATE (TO R/W BASIN)	1.60	1.90	4.91	7.48	9.35	11.96	14.46	39.13	
PEAK BASIN ELEVATION	1067.36	1068.00	1068.37	1068.56	1069.16	1070.44	1071.09	1071.57	
EAST BASIN SYSTEM									
WET BASIN: BOTTOM=1083.0, OUTLET = 1090.0, TOP OF BERM = 1096.0 (4P)									
DISCHARGE RATE	8.65	10.63	13.41	15.78	47.01	115.60	146.10	190.92	
PEAK BASIN ELEVATION	1092.21	1092.38	1092.60	1092.76	1093.07	1094.80	1095.42	1095.80	
INFILTRATION BASIN: BOTTOM = 1089.0, OUTLET = 1090.0, TOP OF BERM = 1096.0 (8P)									
DISCHARGE RATE (TO R/W BASIN)	4.05	6.27	10.17	13.41	20.63	46.20	86.52	153.33	
PEAK BASIN ELEVATION	1092.21	1092.38	1092.60	1092.76	1093.07	1094.80	1095.42	1095.80	
NEWBURY POND AS MODELED (EXISTING)									
DRY BASIN: BOTTOM=1119.48, OUTLET = 1119.48, TOP OF BERM = 1123.25 (6P)									
DISCHARGE RATE	7.88	14.95	32.26	50.93	73.30	112.48	132.41	164.23	
PEAK BASIN ELEVATION	1121.97	1122.13	1122.29	1122.39	1122.49	1122.60	1122.64	1122.69	

WATERSHED DATA								
TOTAL	1-year	2-year	5-year	10-year	25-year	100-yr	200-yr	500-yr
PRE-DEVELOPMENT	17.27	29.16	55.21	88.15	143.62	253.62	321.57	445.51
PRE-DEVELOPMENT (NO AG POND)	28.01	48.47	93.84	144.04	222.88	378.69	465.96	612.66
POST-DEVELOPMENT NO CONTROLS	181.65	223.83	299.48	380.62	500.22	714.26	827.45	1010.60
POST-DEVELOPMENT w/CONTROLS	10.45	14.09	23.09	31.99	49.76	107.71	203.27	357.81
WEST	1-year	2-year	5-year	10-year	25-year	100-yr	200-yr	500-yr
PRE-DEVELOPMENT (1)	8.63	14.22	25.84	39.85	62.89	107.58	132.75	174.84
POST-DEVELOPMENT w/CONTROLS (W)	6.71	9.07	14.09	20.13	28.09	59.04	111.81	186.90
CENTRAL	1-year	2-year	5-year	10-year	25-year	100-yr	200-yr	500-yr
PRE-DEVELOPMENT (1L)	7.30	12.02	21.82	34.06	53.89	140.04	181.98	244.91
PRE-DEVELOPMENT NO AG POND (1L)	-19.89	34.25	65.55	98.72	-150.07	245.73	299.21	388.65
POST-DEVELOPMENT w/CONTROLS (C)	3.94	5.07	7.35	13.43	24.40	49.58	97.86	259.21
EAST	1-year	2-year	5-year	10-year	25-year	100-yr	200-yr	500-yr
PRE-DEVELOPMENT (4)	4.13	7.59	15.62	26.07	43.85	80.01	100.99	136.43
POST-DEVELOPMENT w/CONTROLS (8P)	4.05	6.27	10.17	13.41	20.40	42.42	88.70	154.70

Mullins Site - Hill Valley
Draft Concept Plan: 9.4.24
"ALT N2"



DATE: 10-02-2024
REVISIONS:
SCALE: 1" = 200'
DWG: 21-04-102
Exhibit 6.2

PROPOSED DRAINAGE PLAN
HILL VALLEY
CITY OF MADISON, DANE COUNTY, WISCONSIN

D'ONOFRIO KOTTE AND ASSOCIATES, INC.
7530 Westwind Way, Madison, WI 53717
Phone: 608.833.7530 • Fax: 608.833.1089
YOUR NATURAL RESOURCE FOR LAND DEVELOPMENT