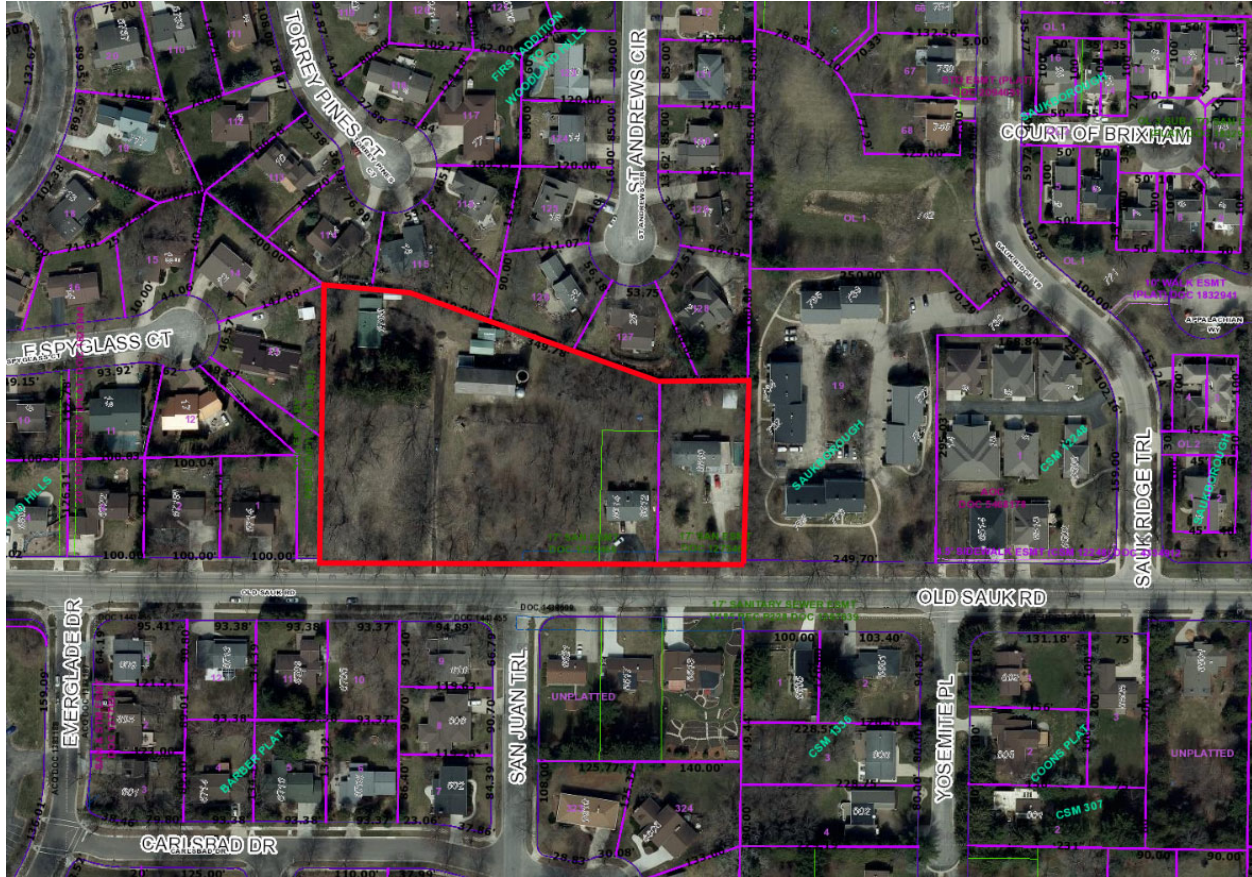


6624 Old Sauk Road

Contract 9614

MUNIS 15514

Developer: Old Sauk Managing Member, LLC



Summary of Improvements:

- Construct new public sidewalk on Old Sauk Road adjacent to 6624 Old Sauk Road per plans approved by the City Engineer.
- Construct / restore street terrace, curb and gutter, and pavement along the Old Sauk Road frontage per plans approved by the City Engineer.
- Construct pedestrian crossing improvements on Old Sauk Road at San Jaun Trail per plans approved by the City Engineer and City Traffic Engineering. Improvements to include a median island, Rectangular Rapid Flashing Beacon (RRFB), sidewalk ramps, and marked crosswalk.
- Close abandoned driveways with curb and gutter. Construct new drive entrance aprons per plans approved by the City Engineer and per the Commercial Driveway Permit approved by the City Traffic Engineer.

- Construct private sanitary, storm, and water service laterals necessary to serve 6624 Old Sauk Road per plans approved by the City Engineer.
- Provide existing public street tree protection, removals, and plantings per City Forestry approvals.
- Close abandoned driveways with curb and gutter.
- Private sanitary, storm, and water service laterals.
- Repair or replace existing sidewalk, terrace, curb & gutter as needed.
- Coordinate with City Traffic Engineering for any temporary relocation of existing streetlights needed to facilitate construction.
- Completed and record the required pending Certified Survey Map (CSM).



ZACHARY M. REYNOLDS, S-3223
WISCONSIN PROFESSIONAL LAND SURVEYOR

Toll Free (800) 242-8511
Hearing Impaired TDD (800) 542-2289
www.DiggersHotline.com



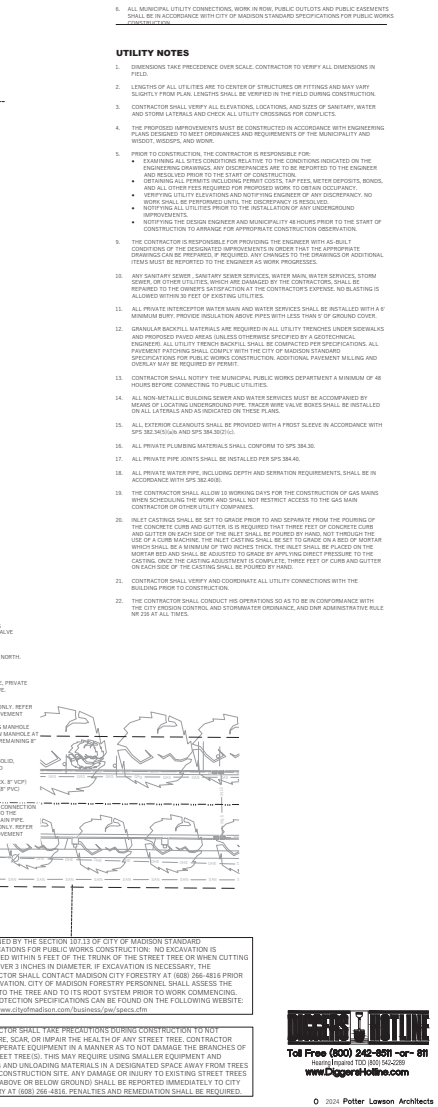
Date	Issuance/Revisions	By
4/05/2024	Land Use Application	
1/31/2025	Minor Alteration	

**GRADING & EROSION
CONTROL PLAN**

C200

C200

PROPOSED STORM SEWER STRUCTURES DESCRIPTION						DATE
LABEL	INVERT ELEV. (F.T.)	RIM ELEV. (F.T.)	SUMP DEPTH (F.T.)	DEPTH (F.T.)	STRUCTURE DESCRIPTION	GRATE
STM INL NO. 7	1018.63	1019.36	0.00	2.72	48" MANHOLE	HALA GASTRA CONE GRATE TRASHRASH
STM MH NO. 4	1018.63	1023.95	0.00	7.22	N.YLOP 24" DRN BRASN	STANDARD H-20 RATED
STM MH NO. 5	1018.29	1023.62	0.00	5.33	N.YLOP 48" DRN BRASN	STANDARD H-20 RATED
STM MH NO. 5.1	1018.29	1023.45	0.00	5.16	N.YLOP 48" DRN BRASN	STANDARD H-20 RATED
STM MH NO. 8	1018.63	1025.00	0.00	2.94	48" MANHOLE	R-1050, SOLID LO
STM INL NO. 9	1019.32	1024.12	0.00	4.80	2'X3 BOX	R-3607, TYPE R GRATE
STM INL NO. 10	1018.63	1023.90	0.00	3.03	2'X3 BOX	R-3607, TYPE R GRATE
STM INL NO. 11	1018.63	1023.90	0.00	2.94	N.YLOP 48" DRN BRASN	STANDARD H-20 RATED
TRENCH DRAIN NO. 11.1	1023.75	1026.08	1.00	4.33	VOLANDS SLOT DR IN	STANDARD
TRENCH DRAIN NO. 11.2	1023.43	1025.50	2.00	4.07	VOLANDS SLOT DR IN	STANDARD
TRENCH DRAIN NO. 11.3	1023.60	1024.44	3.00	4.94	VOLANDS SLOT DR IN	STANDARD
STM INL NO. 12	1018.63	1023.95	0.00	2.72	N.YLOP 24" DRN BRASN	STANDARD H-20 RATED
STM MH NO. 13	1018.63	1024.00	0.00	4.99	N.YLOP 48" DRN BRASN	STANDARD H-20 RATED
STM INL NO. 14	1020.00	1024.00	0.00	2.50	48" MANHOLE	HALA GASTRA CONE GRATE TRASHRASH
STM INL NO. 15	1018.63	1023.95	0.00	2.94	2'X3 BOX	R-3607, TYPE R GRATE
STM INL NO. 18	1024.12	1024.69	0.00	2.56	2'X3 BOX	R-3607, TYPE R GRATE
STM INL NO. 19	1023.69	1024.81	0.00	2.12	2'X3 BOX	R-3607, TYPE R GRATE
STM MH NO. 20	1023.60	1024.40	0.00	4.90	N.YLOP 48" DRN BRASN	STANDARD H-20 RATED
STM MH NO. 21	1023.60	1024.40	0.00	4.90	N.YLOP 48" DRN BRASN	STANDARD H-20 RATED
STM INL NO. 22	1023.12	1025.50	0.00	3.38	N.YLOP 24" DRN BRASN	STANDARD H-20 RATED



2023.30.00		
Date	Issuance/Revisions	Symbol
04/05/2024	Land Use Application	
01/31/2025	Minor Alteration	

UTILITY PLAN

C300

