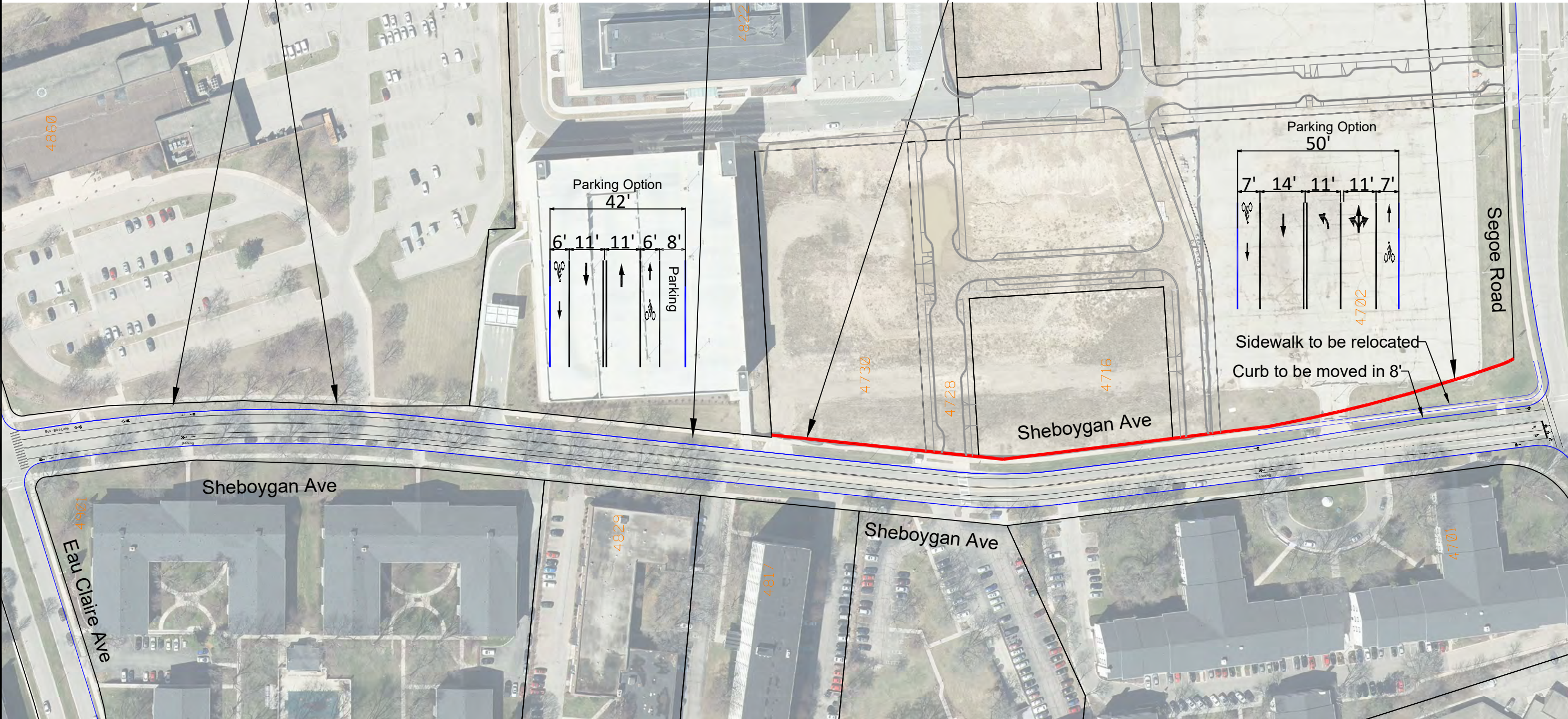
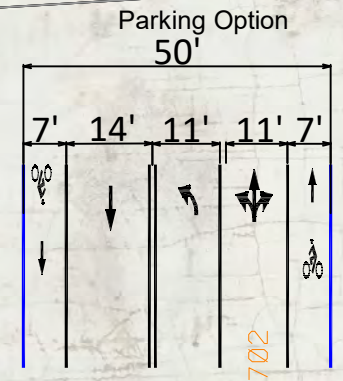
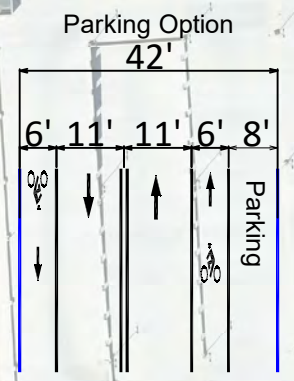


Location	Total Spaces	AM Study						PM Study					
		Res Vehicles	NR Vehicles	Total Vehicle Count	Percent Occupied	% of Occupied-Res	% of Occupied-NR	Res Vehicles	NR Vehicles	Total Vehicle Count	Percent Occupied	% of Occupied-Res	% of Occupied-NR
		25-Mar-21						25-Mar-21					
Sheboygan (N. Segoe to N. Eau Claire)													
North (no parking 7A-6P)	27	NA	NA	NA	NA	NA	NA	NA	NA	NA	NA	NA	NA
South	24	3	7	10	42%	30%	70%	3	7	10	42%	30%	70%
Block Totals:	51	3	7	10	20%	30%	70%	3	7	10	20%	30%	70%
		6-Oct-21						6-Oct-21					
Sheboygan (N. Segoe to N. Eau Claire)													
North (no parking 7A-6P)	27	NA	NA	NA	NA	NA	NA	NA	NA	NA	NA	NA	NA
South	24	2	11	13	54%	15%	85%	6	2	8	33%	75%	25%
Block Totals:	51	2	11	13	25%	15%	85%	6	2	8	16%	75%	25%



Terrace Trees Not Likely to Survive if Street Widened

Madison Yards Sheboygan Avenue Frontage



Sidewalk to be relocated
Curb to be moved in 8'

SHEBOYGAN AVENUE
MADISON YARDS

MADISON, WI

CONTRACT NO: ---

MARK

REVISION

DATE

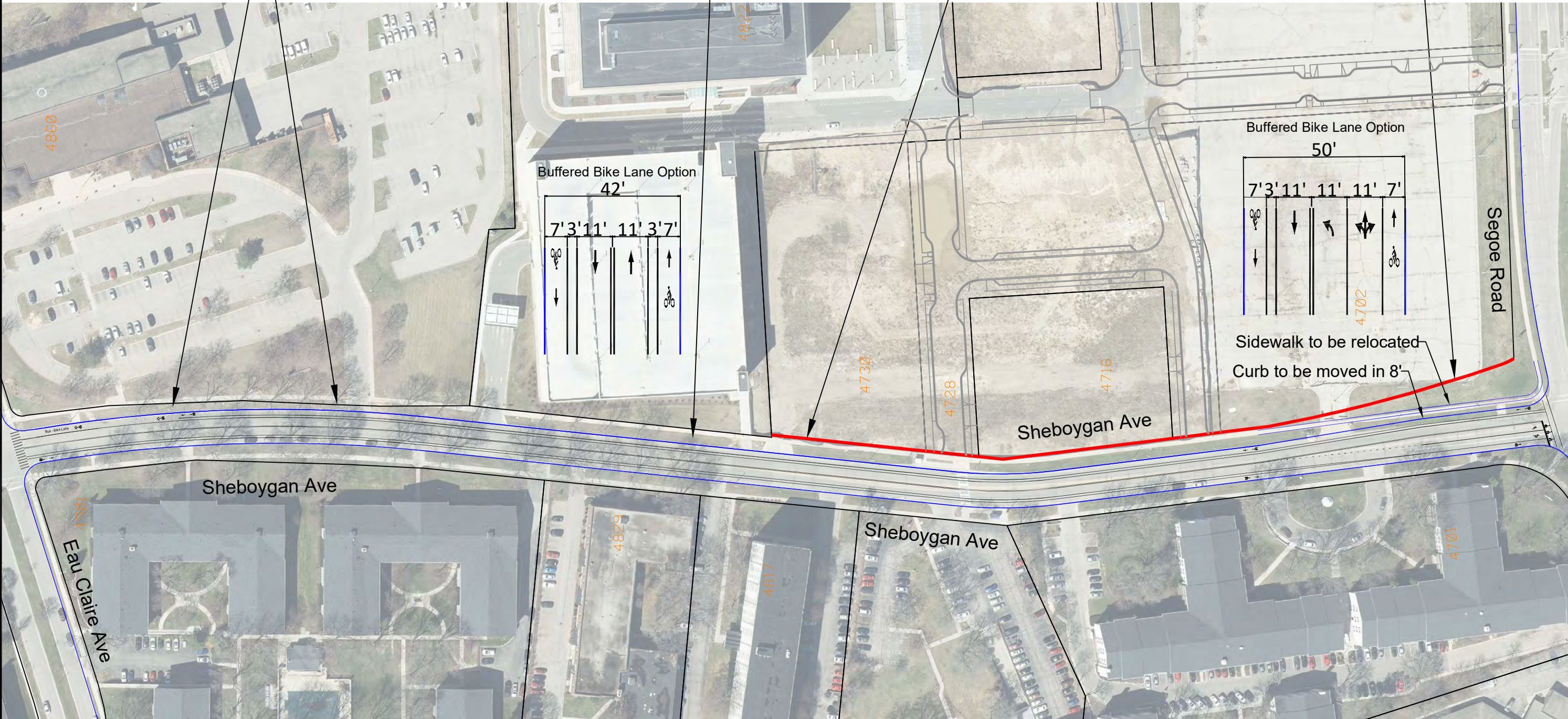
BY

Designed By: SDM

Date: 1/11/2021 12:55 PM

Scale: 1"=25'

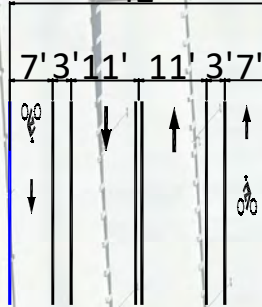
EX-1



Terrace Trees Not Likely to Survive if Street Widened

Madison Yards Sheboygan Avenue Frontage

Buffered Bike Lane Option
42'



Buffered Bike Lane Option
50'



Sidewalk to be relocated
Curb to be moved in 8'

SHEBOYGAN AVENUE

MADISON YARDS

MADISON, WI

CONTRACT NO:

MARK

REVISION

DATE

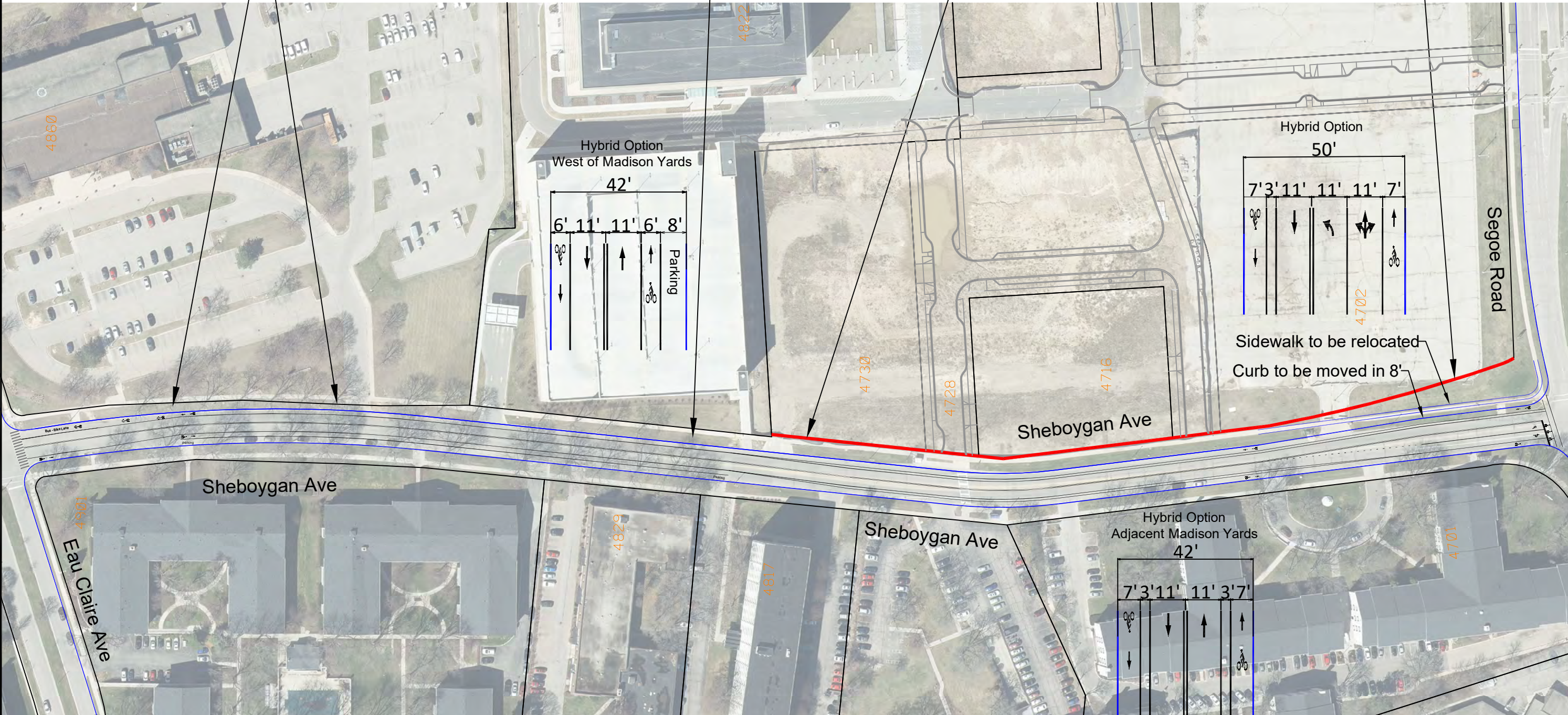
BY

Designed By: SDM

Date: 1/11/2021 12:51 PM

Scale: 1"=25'

EX-2



Terrace Trees Not Likely to Survive if Street Widened

Madison Yards Sheboygan Avenue Frontage

Hybrid Option
West of Madison Yards
42'

Hybrid Option
50'

Hybrid Option
Adjacent Madison Yards
42'

Sidewalk to be relocated
Curb to be moved in 8'

SHEBOYGAN AVENUE		MADISON, WI		CONTRACT NO:	
MADISON YARDS		MADISON, WI		CONTRACT NO:	
M:\DESIGN\Traffic\Maps_Plans\DP-Maps\dp2021_Sheboygan_BikeLanes_Option3.dwg		MADISON, WI		CONTRACT NO:	
CITY OF MADISON WISCONSIN		MADISON, WI		CONTRACT NO:	
---		---		---	
EX-3		EX-3		EX-3	

MARK	REVISION	DATE	BY
Designed By: SDM	Date: 1/11/2021 12:53 PM	Scale: 1"=25'	EX-3

The diagram illustrates a 42-foot wide street layout. The total width is indicated by a dimension line at the top labeled 42'. The layout is divided into several sections from left to right:

- Face of Curb:** Indicated by an arrow pointing to the left edge of the parking zone.
- Parking:** A zone 8' wide, labeled "Parking".
- Travel Lane:** A lane 13' wide, indicated by a downward arrow.
- Center Turn Lane:** A lane 21' wide, indicated by an upward arrow.
- Face of Curb:** Indicated by an arrow pointing to the right edge of the center turn lane.

The diagram illustrates a 42-foot wide street layout. The total width is indicated at the top as 42'. The layout is divided into four sections from left to right, with widths of 8', 13', 13', and 8' respectively. The 8' sections are labeled 'Parking' and are located adjacent to the 'Face of Curb' on both sides. The 13' sections are travel lanes. The left 13' lane has a downward-pointing arrow, and the right 13' lane has an upward-pointing arrow, indicating two-way traffic. A double line is shown between the two 13' travel lanes, likely representing a centerline or a divider.



Parking Option
42'

6' 11' 11' 6' 8'

Face of Curb

Parking

Face of Curb

The diagram illustrates a 42-foot wide parking area divided into five sections. From left to right, the sections are: a 6-foot wide area with a right-turning car icon and a downward arrow; an 11-foot wide area with a downward arrow; an 11-foot wide area with an upward arrow; a 6-foot wide area with an upward arrow and a bicycle icon; and an 8-foot wide area labeled 'Parking'. The left and right boundaries are marked as 'Face of Curb'.

The diagram illustrates a 'Buffered Bike Option' for a 42-foot wide section. The section is divided into several lanes with the following widths from left to right: 7', 3', 11', 11', 3', and 7'. The left 7-foot section contains a downward arrow and a pedestrian icon. The 3-foot section is a buffer. The first 11-foot section contains a downward arrow. The second 11-foot section contains an upward arrow. The next 3-foot section is a buffer. The final 7-foot section contains an upward arrow and a bicycle icon. The entire section is bounded by 'Face of Curb' on both sides. A total width of 42' is indicated at the top.

The diagram illustrates two 42-foot wide street sections. The left section is divided into five lanes with widths of 6', 11', 11', 6', and 8' (labeled 'Parking'). The right section is divided into six lanes with widths of 7', 3', 11', 11', 3', and 7'. Both sections show pedestrian and bicycle icons with arrows indicating traffic direction.