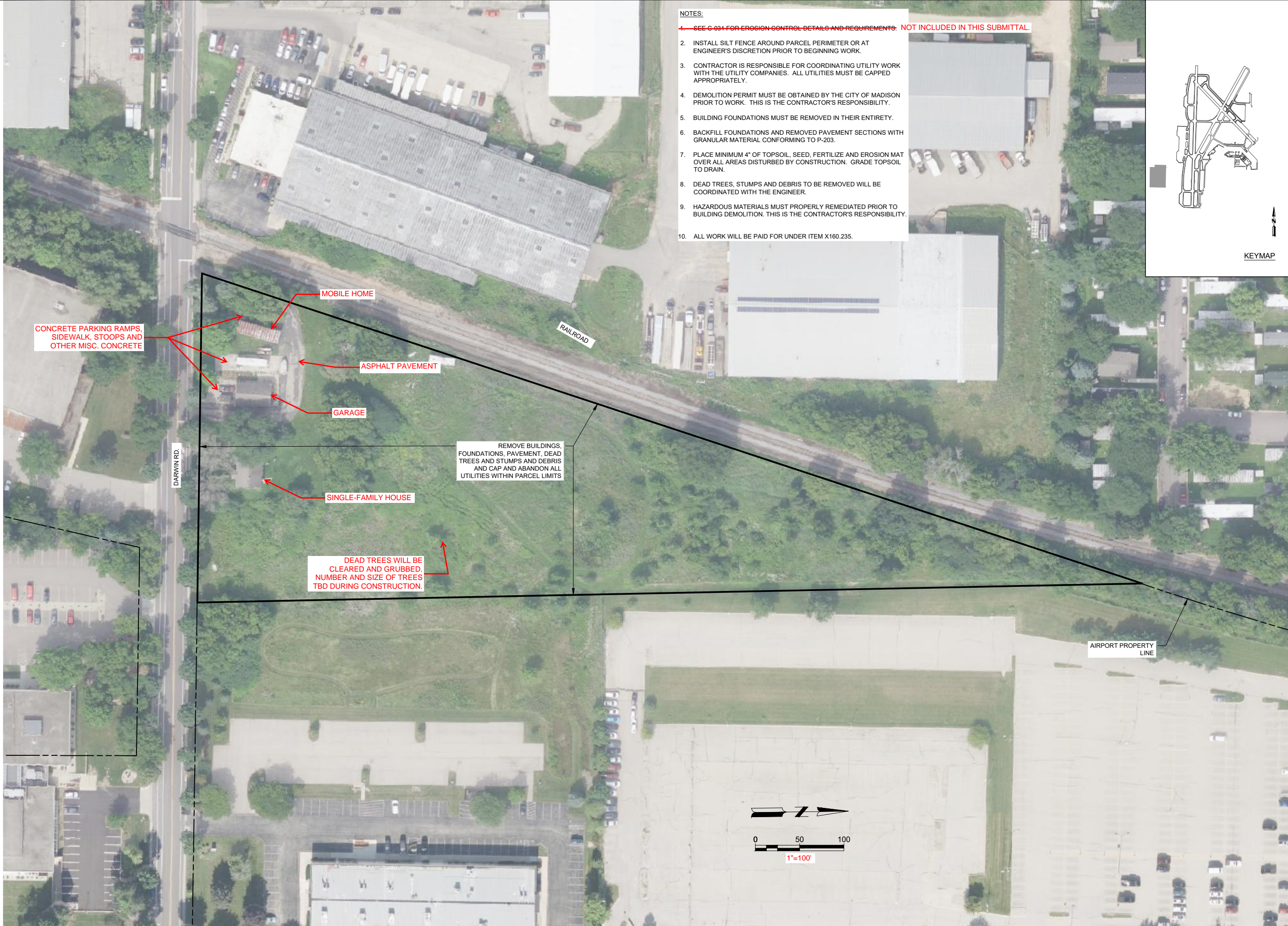


KEYMAP

These documents shall not be used for any purpose or project for which it is not intended. Mead & Hunt shall be indemnified by the client and held harmless and released from all claims, damages, liabilities, losses, and expenses, including attorney's fees and costs, arising out of such misuse or reuse of the documents. In addition, unauthorized reproduction of these documents, in part or in whole, is prohibited.

NOTES:

1. ~~SEE C-051 FOR EROSION CONTROL DETAILS AND REQUIREMENTS. NOT INCLUDED IN THIS SUBMITTAL.~~
2. INSTALL SILT FENCE AROUND PARCEL PERIMETER OR AT ENGINEER'S DISCRETION PRIOR TO BEGINNING WORK.
3. CONTRACTOR IS RESPONSIBLE FOR COORDINATING UTILITY WORK WITH THE UTILITY COMPANIES. ALL UTILITIES MUST BE CAPPED APPROPRIATELY.
4. DEMOLITION PERMIT MUST BE OBTAINED BY THE CITY OF MADISON PRIOR TO WORK. THIS IS THE CONTRACTOR'S RESPONSIBILITY.
5. BUILDING FOUNDATIONS MUST BE REMOVED IN THEIR ENTIRETY.
6. BACKFILL FOUNDATIONS AND REMOVED PAVEMENT SECTIONS WITH GRANULAR MATERIAL CONFORMING TO P-203.
7. PLACE MINIMUM 4" OF TOPSOIL, SEED, FERTILIZE AND EROSION MAT OVER ALL AREAS DISTURBED BY CONSTRUCTION. GRADE TOPSOIL TO DRAIN.
8. DEAD TREES, STUMPS AND DEBRIS TO BE REMOVED WILL BE COORDINATED WITH THE ENGINEER.
9. HAZARDOUS MATERIALS MUST PROPERLY REMEDIATED PRIOR TO BUILDING DEMOLITION. THIS IS THE CONTRACTOR'S RESPONSIBILITY.
10. ALL WORK WILL BE PAID FOR UNDER ITEM X160.235.



DANE COUNTY REGIONAL AIRPORT
TREE CLEARING RUNWAY 18/36 APPROACHES;
SITE CLEARANCE 2402 DARWIN RD.
 4000 INTERNATIONAL LANE
 MADISON, WI 53704

ISSUED
11/01/21 PLAN
COMMISSION SUBMITTAL

BSA NO.: MSN1014
 MSK NO.: 2309936-201517.01
 DATE: **November 1, 2021**
 DESIGNED BY: LJN
 DRAWN BY: DLU
 CHECKED BY: DNE
 DO NOT SCALE DRAWINGS

SHEET CONTENTS
 DEMOLITION PLAN -
 DARWIN ROAD

SHEET NO. **1** of **1**

C-053