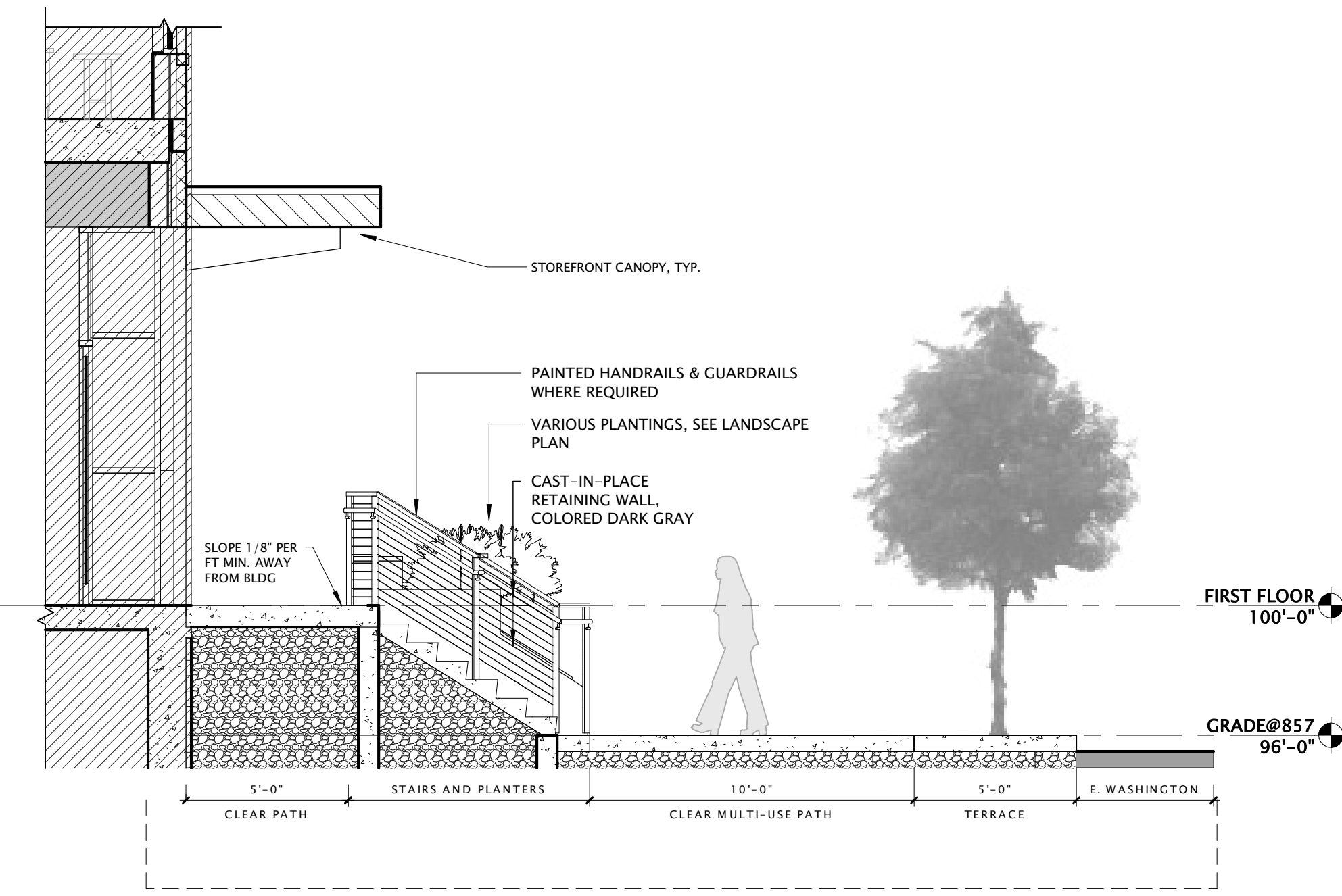
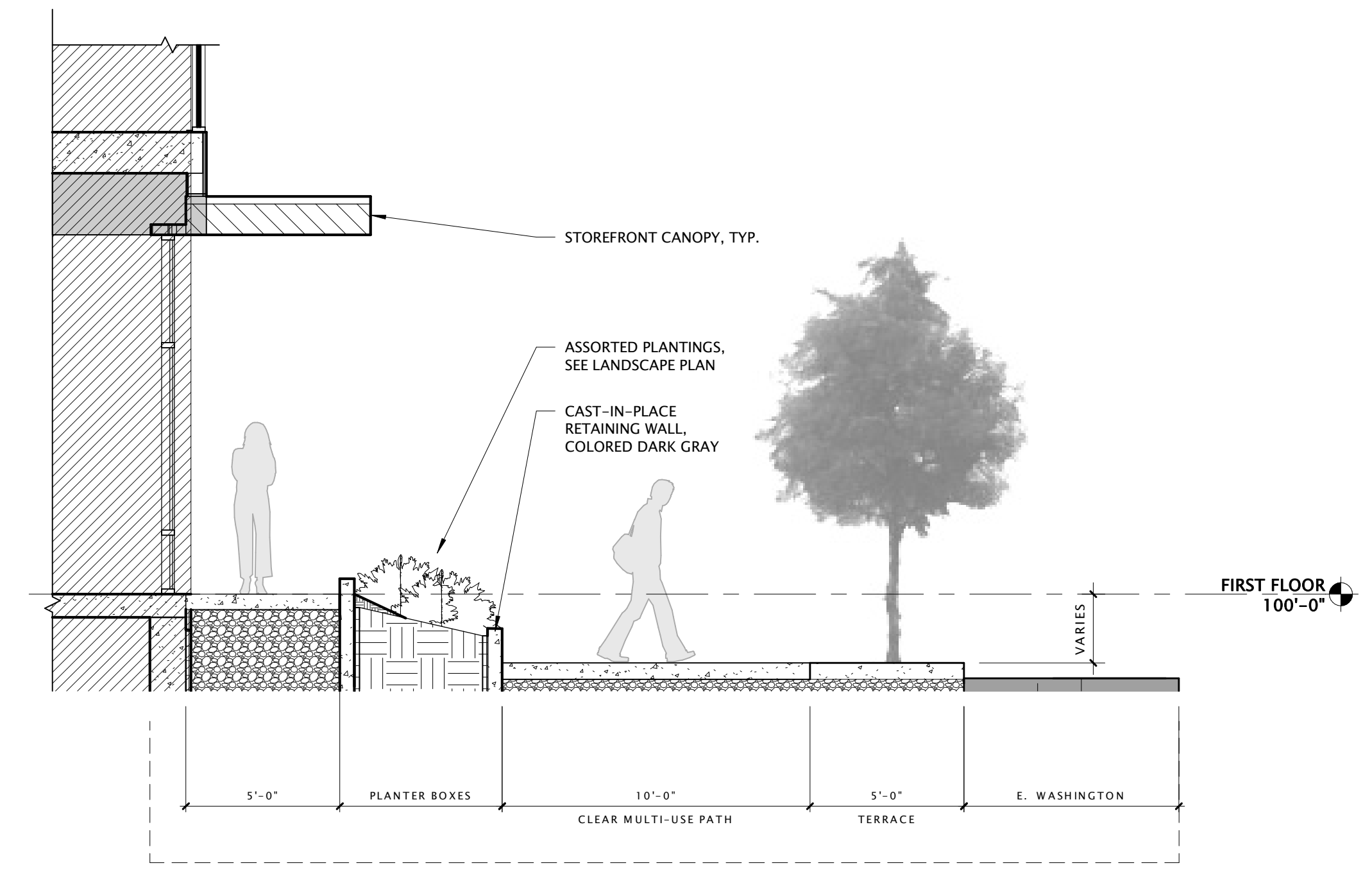


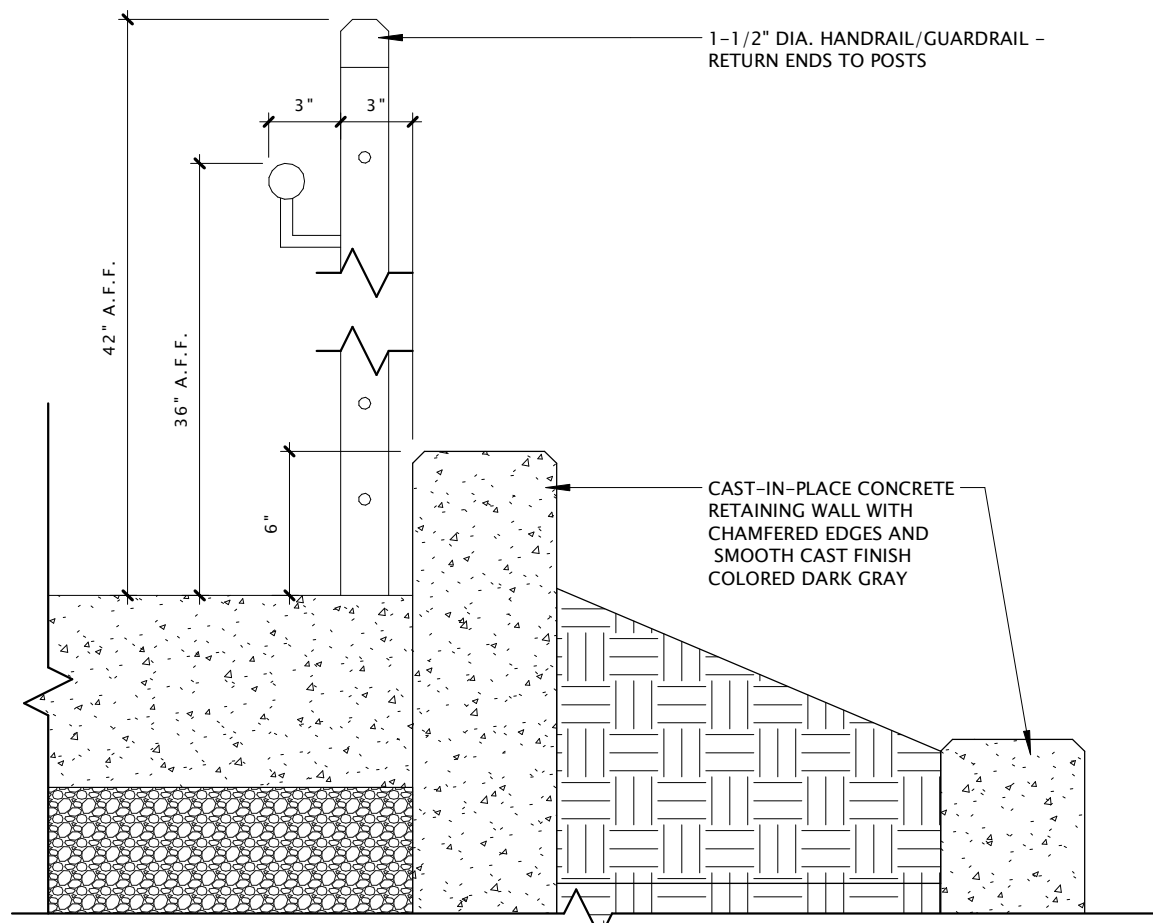
1 SECTION @ DOOR 1005A
1/4" = 1'-0"



3 SITE SECTION AT EAST WASHINGTON
1/4" = 1'-0"



5 SITE SECTION AT E. WASHINGTON
1/4" = 1'-0"

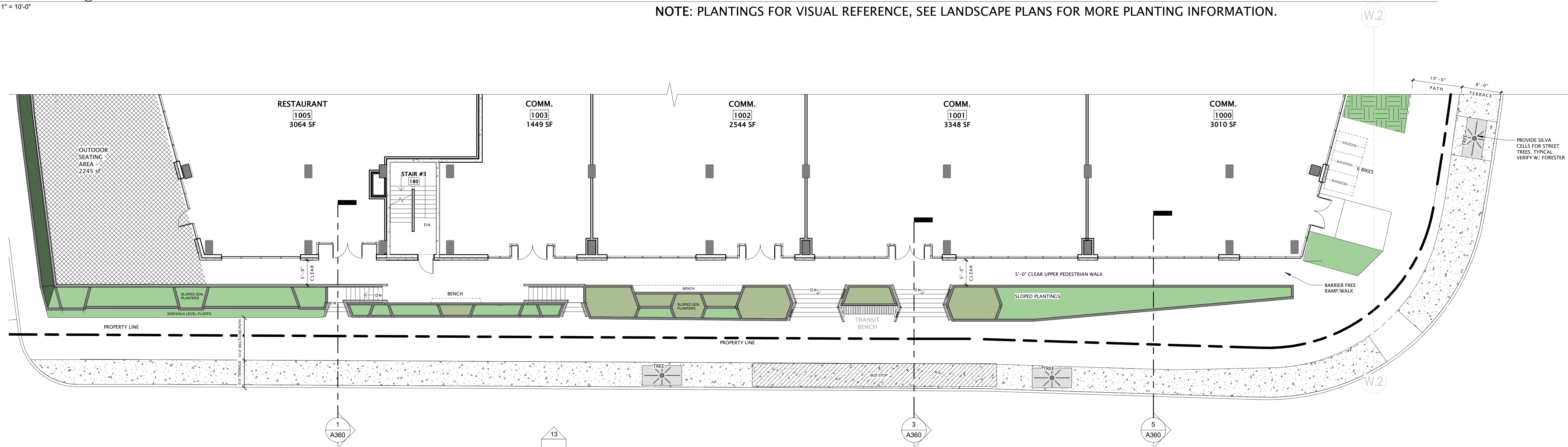


12 PEDESTRIAN WALKWAY DETAIL
1 1/2" = 1'-0"



13 SOUTH ELEVATION @ EAST WASHINGTON
1" = 10'-0"

NOTE: PLANTINGS FOR VISUAL REFERENCE, SEE LANDSCAPE PLANS FOR MORE PLANTING INFORMATION.



27 DETAIL PLAN AT WASHINGTON AVENUE FRONTAGE
1" = 10'-0"



JLA
ARCHITECTS
MADISON : MILWAUKEE
jla-ap.com

JLA PROJECT NUMBER: 19-0802

1868 EAST
WASHINGTON
AVENUE

SITE VERIFICATION RESUBMITTAL

PROGRESS DOCUMENTS

These documents reflect progress and intent and may be subject to change, including additional detail, these are not final construction documents and should not be used for final bidding or construction-related purposes.

DATE OF ISSUANCE: OCTOBER 14, 2021

REVISION SCHEDULE		
Mark	Description	Date

SHEET TITLE

SITE SECTIONS AT E.
WASHINGTON

SHEET NUMBER

A360