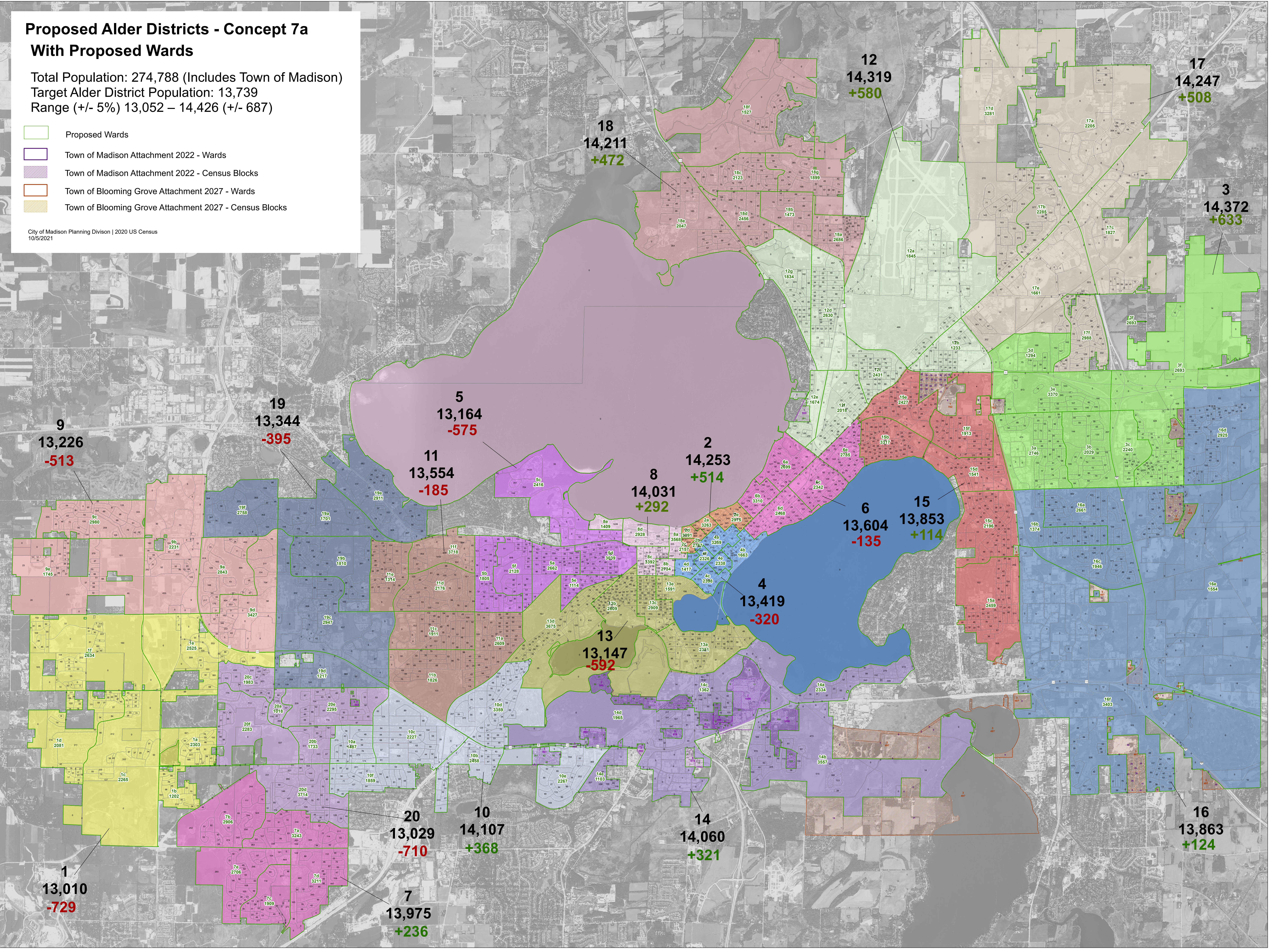


# Proposed Alder Districts - Concept 7a With Proposed Wards

Total Population: 274,788 (Includes Town of Madison)  
Target Alder District Population: 13,739  
Range (+/- 5%) 13,052 – 14,426 (+/- 687)

- Proposed Wards
- Town of Madison Attachment 2022 - Wards
- Town of Madison Attachment 2022 - Census Blocks
- Town of Blooming Grove Attachment 2027 - Wards
- Town of Blooming Grove Attachment 2027 - Census Blocks

City of Madison Planning Division | 2020 US Census  
10/5/2021





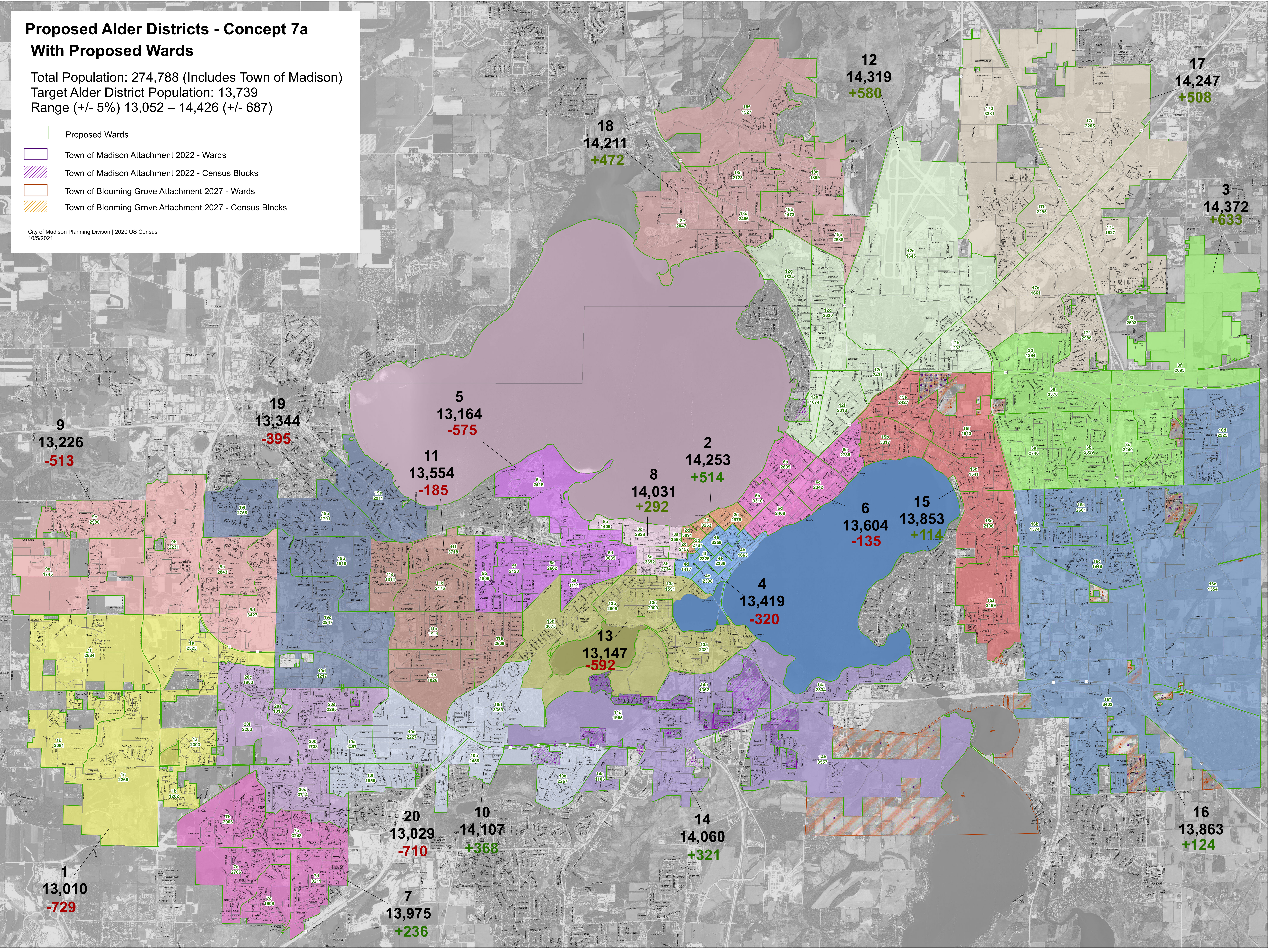
# Proposed Alder Districts - Concept 7a

## With Proposed Wards

Total Population: 274,788 (Includes Town of Madison)  
 Target Alder District Population: 13,739  
 Range (+/- 5%) 13,052 – 14,426 (+/- 687)

- Proposed Wards
- Town of Madison Attachment 2022 - Wards
- Town of Madison Attachment 2022 - Census Blocks
- Town of Blooming Grove Attachment 2027 - Wards
- Town of Blooming Grove Attachment 2027 - Census Blocks

City of Madison Planning Division | 2020 US Census  
 10/5/2021



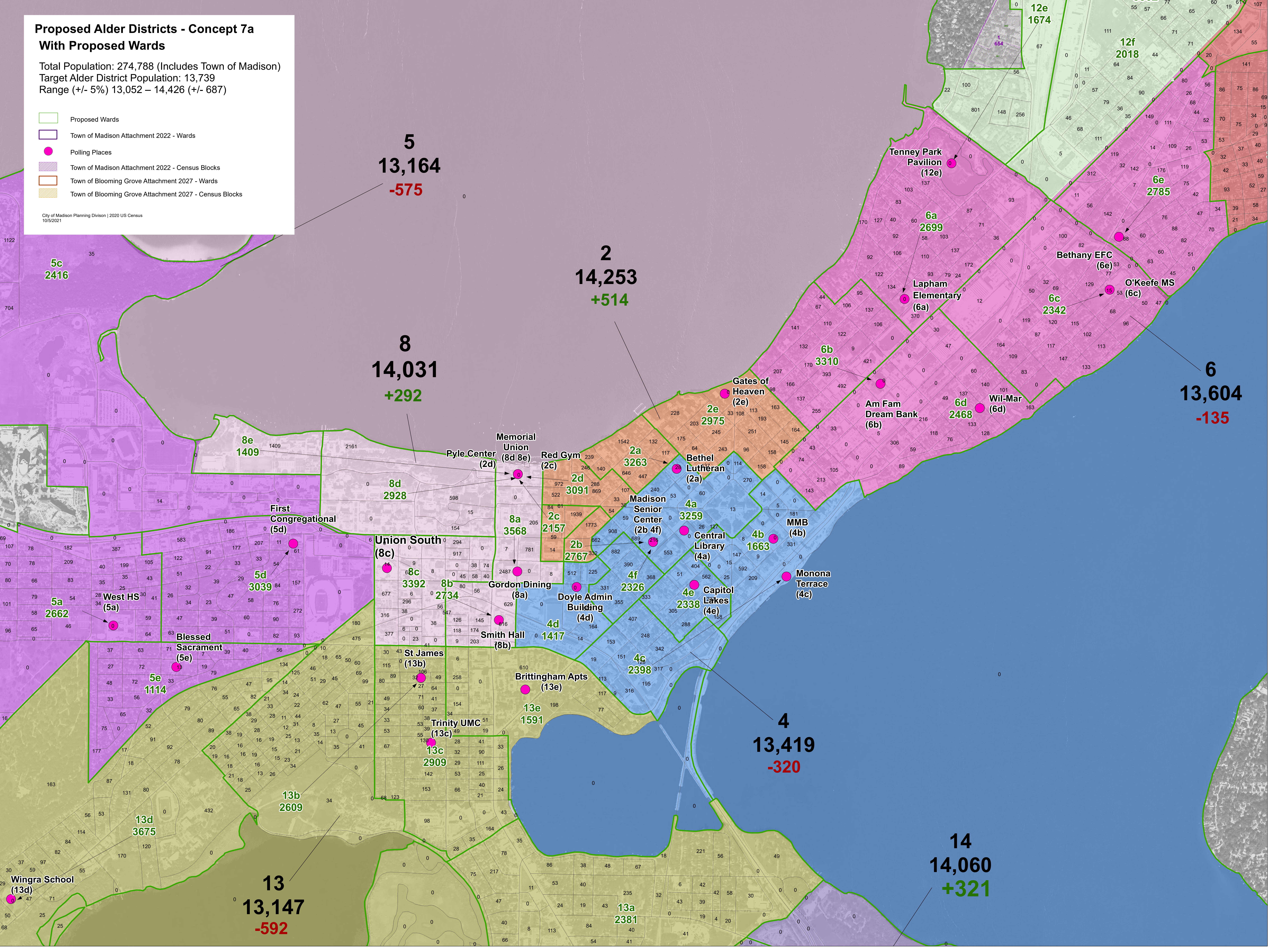


**Proposed Alder Districts - Concept 7a  
With Proposed Wards**

Total Population: 274,788 (Includes Town of Madison)  
Target Alder District Population: 13,739  
Range (+/- 5%) 13,052 – 14,426 (+/- 687)

- Proposed Wards
- Town of Madison Attachment 2022 - Wards
- Polling Places
- Town of Madison Attachment 2022 - Census Blocks
- Town of Blooming Grove Attachment 2027 - Wards
- Town of Blooming Grove Attachment 2027 - Census Blocks

City of Madison Planning Division | 2020 US Census  
10/5/2021





# Proposed Alder Districts - Concept 7a With Proposed Wards

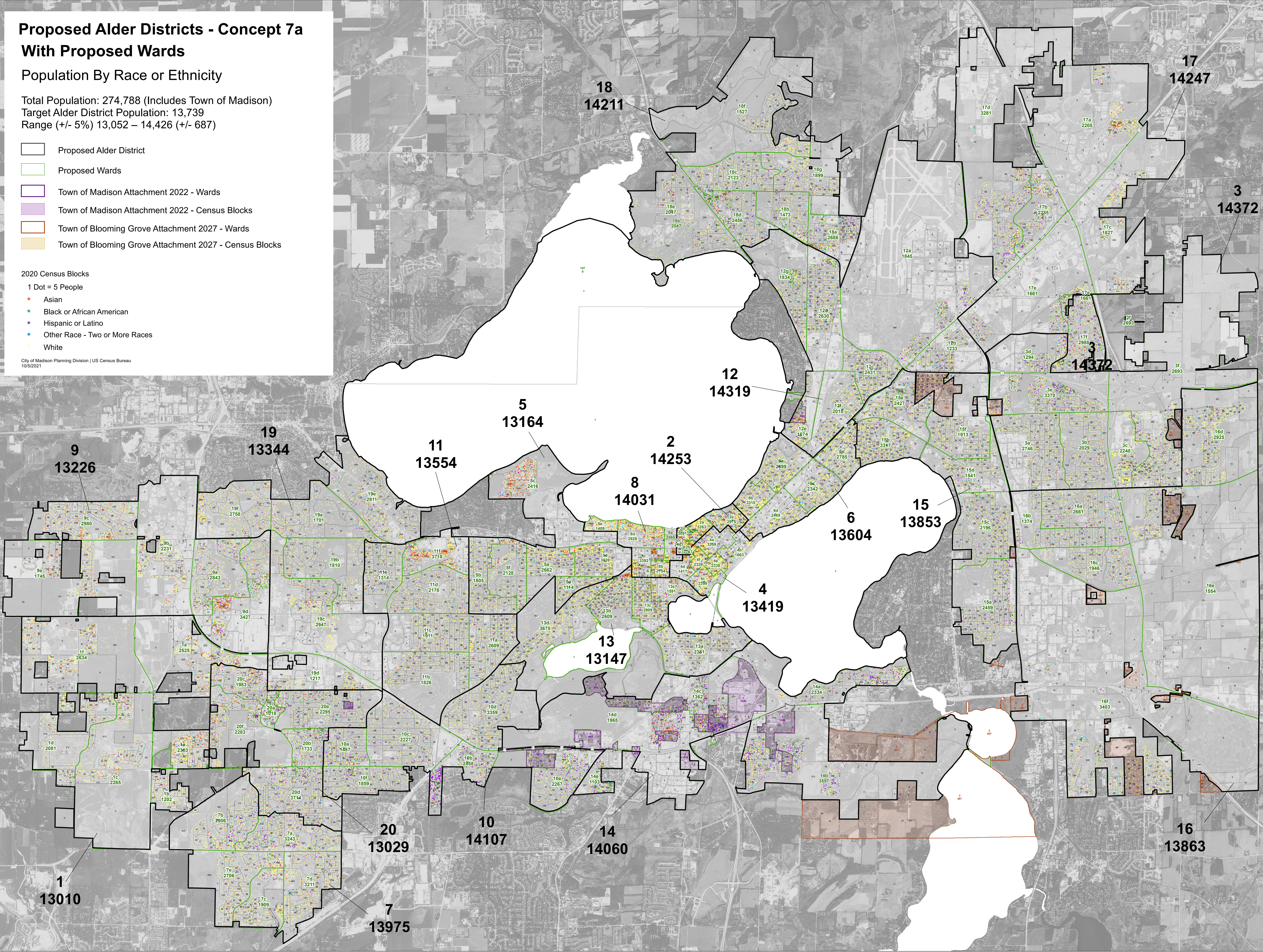
## Population By Race or Ethnicity

Total Population: 274,788 (Includes Town of Madison)  
Target Alder District Population: 13,739  
Range (+/- 5%) 13,052 – 14,426 (+/- 687)

- Proposed Alder District
- Proposed Wards
- Town of Madison Attachment 2022 - Wards
- Town of Madison Attachment 2022 - Census Blocks
- Town of Blooming Grove Attachment 2027 - Wards
- Town of Blooming Grove Attachment 2027 - Census Blocks

- 2020 Census Blocks  
1 Dot = 5 People
- Asian
  - Black or African American
  - Hispanic or Latino
  - Other Race - Two or More Races
  - White

City of Madison Planning Division | US Census Bureau  
10/5/2021





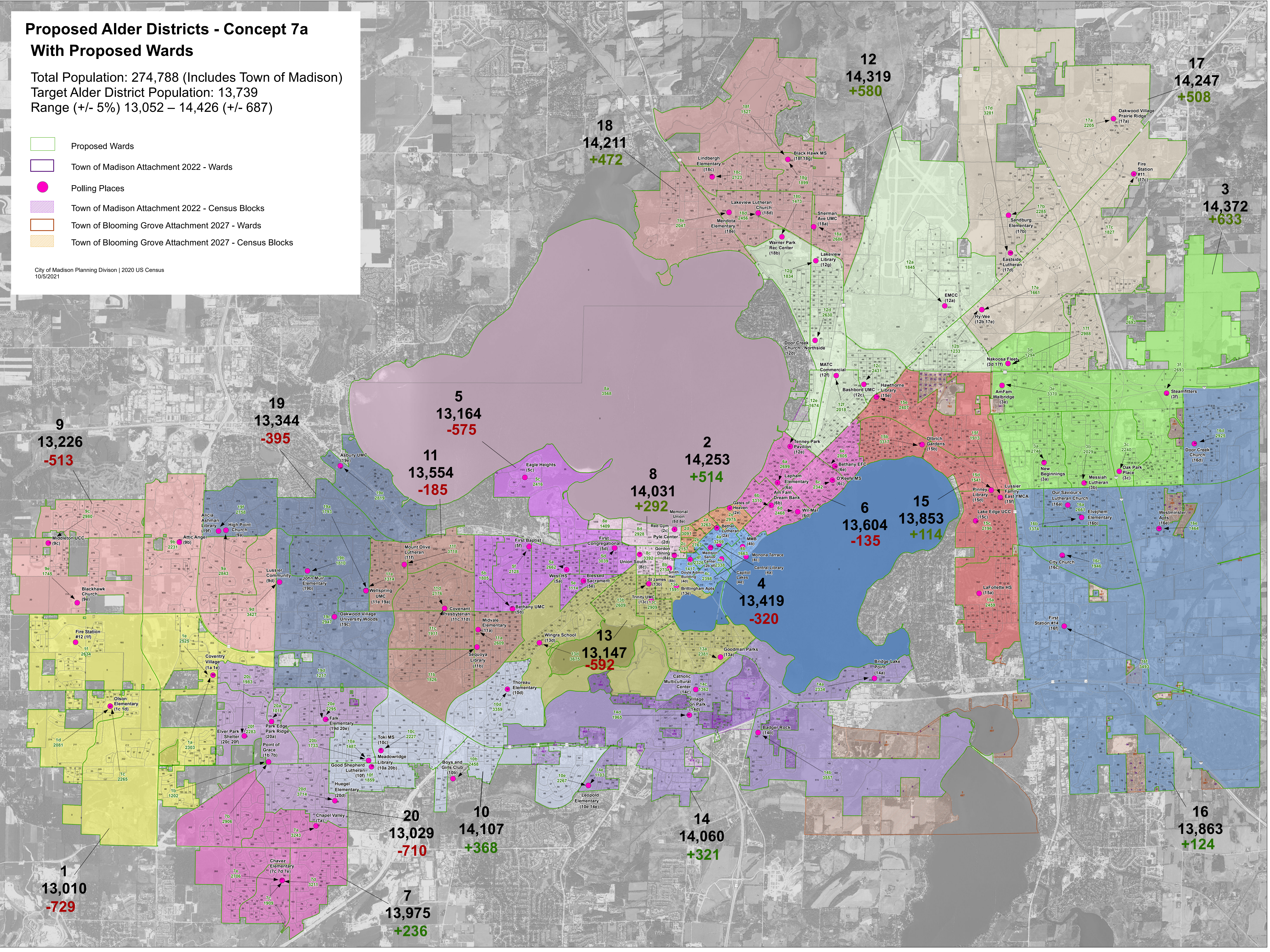
# Proposed Alder Districts - Concept 7a

## With Proposed Wards

Total Population: 274,788 (Includes Town of Madison)  
 Target Alder District Population: 13,739  
 Range (+/- 5%) 13,052 – 14,426 (+/- 687)

- Proposed Wards
- Town of Madison Attachment 2022 - Wards
- Polling Places
- Town of Madison Attachment 2022 - Census Blocks
- Town of Blooming Grove Attachment 2027 - Wards
- Town of Blooming Grove Attachment 2027 - Census Blocks

City of Madison Planning Division | 2020 US Census  
 10/5/2021



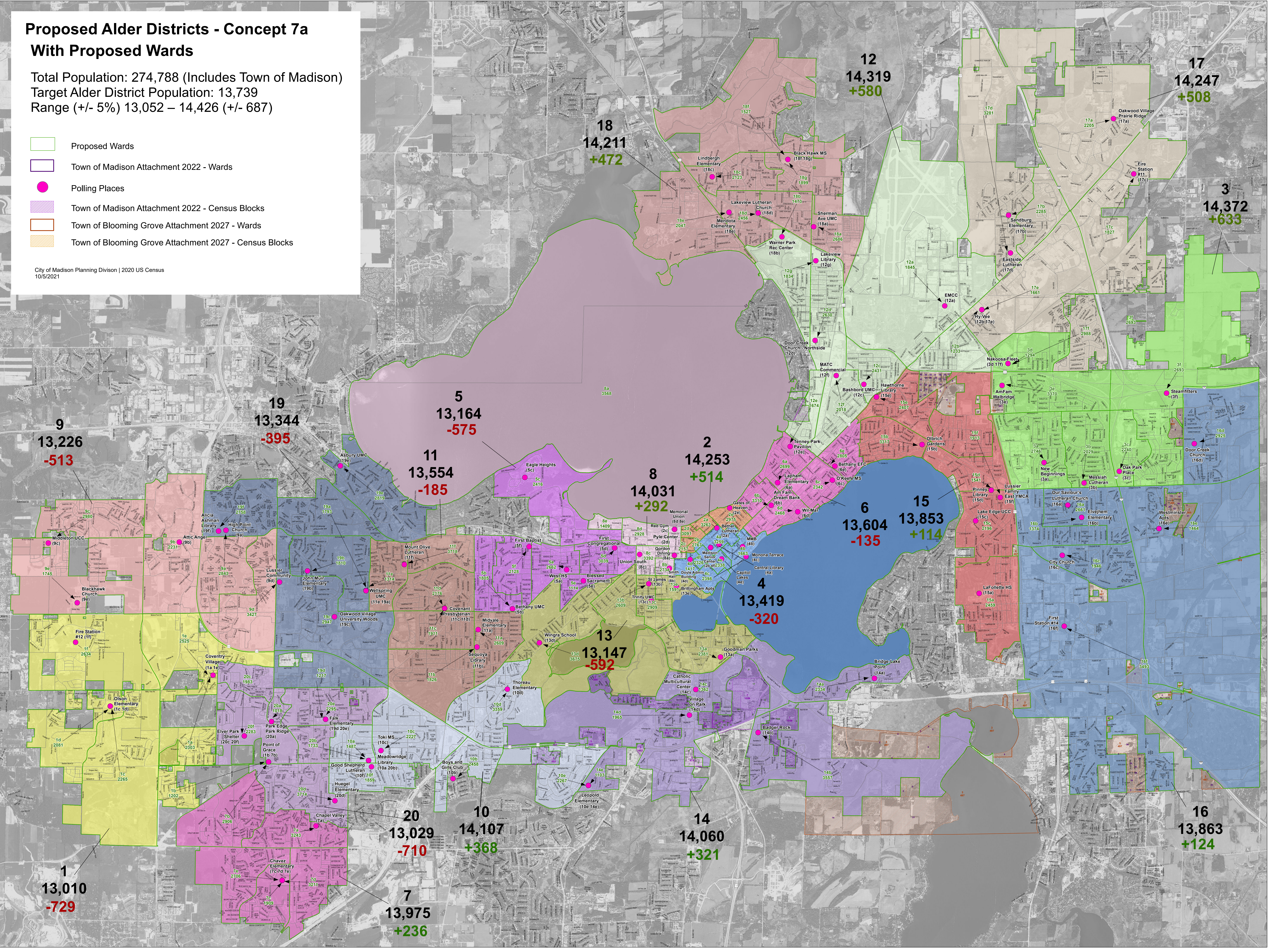


# Proposed Alder Districts - Concept 7a With Proposed Wards

Total Population: 274,788 (Includes Town of Madison)  
 Target Alder District Population: 13,739  
 Range (+/- 5%) 13,052 – 14,426 (+/- 687)

- Proposed Wards
- Town of Madison Attachment 2022 - Wards
- Polling Places
- Town of Madison Attachment 2022 - Census Blocks
- Town of Blooming Grove Attachment 2027 - Wards
- Town of Blooming Grove Attachment 2027 - Census Blocks

City of Madison Planning Division | 2020 US Census  
10/5/2021

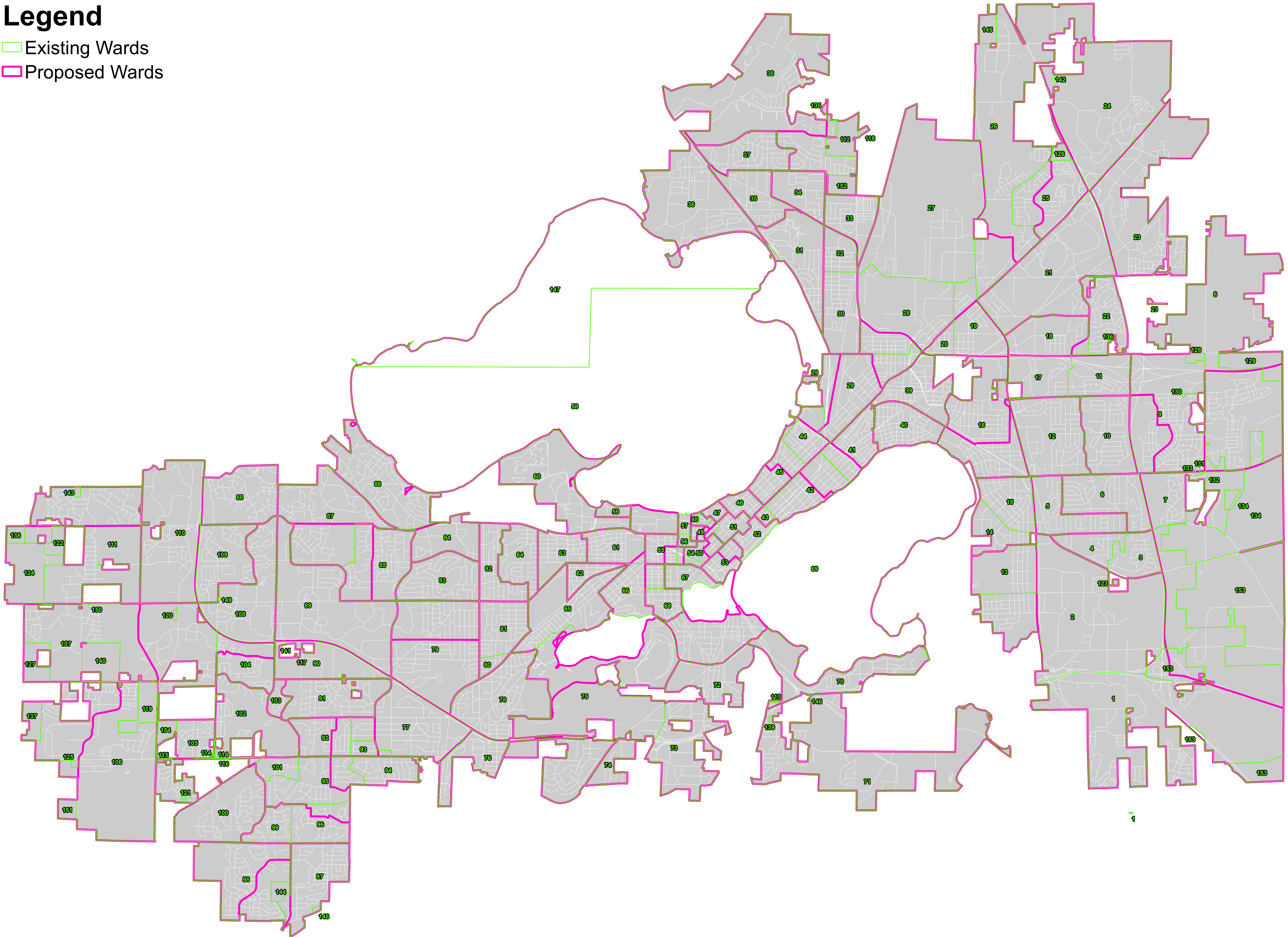




# Legend

Existing Wards

Proposed Wards





2020 Census Redistricting Data - Proposed Wards Concept 7a

Source: U.S. Census Bureau, 2020 Census Redistricting Data  
 Prepared by: City of Madison Planning Division  
 October 5, 2021

Race	Hispanic Origin	People of Color
------	-----------------	-----------------

Ward	Total Population (Apr. 1 2020 population, Aug. 1 2021 geography)	White (Includes Hispanic White)		Non-White								Hispanic				(Non-White & Hispanic White)		Population 18 or Over		Housing Units			
		#	%	Black	American Indian and Alaska Native	Asian	Native Hawaiian and Other Pacific Islander	Some Other Race	Two or More Races	Sub Total		White Hispanic	Non-White Hispanic	Sub Total		Sub Total		#	%	#	Vacant	Occupied	
										#	%			#	%	#	%					#	%
		#	%																				
1a	2,303	1,559	67.7%	107	9	389	1	60	178	744	32.3%	37	111	148	6.4%	781	33.9%	1,914	83.1%	1,142	45	1,097	96.1%
1b	1,202	987	82.1%	25	2	88	2	20	78	215	17.9%	29	62	91	7.6%	244	20.3%	925	77.0%	521	15	506	97.1%
1c	2,265	1,724	76.1%	53	2	356	2	16	112	541	23.9%	22	54	76	3.4%	563	24.9%	1,891	83.5%	1,125	50	1,075	95.6%
1d	2,081	1,646	79.1%	18	3	273	1	13	127	435	20.9%	18	60	78	3.7%	453	21.8%	1,628	78.2%	870	11	859	98.7%
1e	2,525	1,882	74.5%	96	6	357	0	70	114	643	25.5%	27	125	152	6.0%	670	26.5%	2,328	92.2%	1,600	56	1,544	96.5%
1f	2,634	2,031	77.1%	53	3	373	0	34	140	603	22.9%	35	79	114	4.3%	638	24.2%	2,203	83.6%	1,322	44	1,278	96.7%
2a	3,263	2,580	79.1%	67	14	341	3	40	218	683	20.9%	72	122	194	5.9%	755	23.1%	3,179	97.4%	1,280	65	1,215	94.9%
2b	2,767	1,608	58.1%	68	4	841	0	69	177	1,159	41.9%	41	103	144	5.2%	1,200	43.4%	2,497	90.2%	1,327	39	1,288	97.1%
2c	2,157	1,689	78.3%	19	18	233	0	68	130	468	21.7%	89	83	172	8.0%	557	25.8%	1,686	78.2%	811	32	779	96.1%
2d	3,091	2,328	75.3%	64	11	357	0	72	259	763	24.7%	85	168	253	8.2%	848	27.4%	2,902	93.9%	1,333	123	1,210	90.8%
2e	2,975	2,316	77.8%	100	24	238	2	57	238	659	22.2%	64	146	210	7.1%	723	24.3%	2,870	96.5%	1,933	83	1,850	95.7%
3a	2,746	2,100	76.5%	277	5	76	0	71	217	646	23.5%	48	137	185	6.7%	694	25.3%	2,182	79.5%	1,280	57	1,223	95.5%
3b	2,029	1,723	84.9%	68	3	100	0	39	96	306	15.1%	20	54	74	3.6%	326	16.1%	1,648	81.2%	802	10	792	98.8%
3c	2,240	1,626	72.6%	275	10	115	1	49	164	614	27.4%	21	122	143	6.4%	635	28.3%	1,849	82.5%	1,109	15	1,094	98.6%
3d	1,294	697	53.9%	222	9	107	0	125	134	597	46.1%	33	186	219	16.9%	630	48.7%	1,022	79.0%	578	30	548	94.8%
3e	3,370	1,781	52.8%	696	19	159	3	367	345	1,589	47.2%	70	528	598	17.7%	1,659	49.2%	2,629	78.0%	1,458	32	1,426	97.8%
3f	2,693	1,971	73.2%	247	4	177	3	98	193	722	26.8%	39	152	191	7.1%	761	28.3%	2,128	79.0%	1,129	47	1,082	95.8%
4a	3,259	2,423	74.3%	149	16	386	0	67	218	836	25.7%	70	136	206	6.3%	906	27.8%	3,096	95.0%	1,932	116	1,816	94.0%
4b	1,663	1,191	71.6%	276	1	85	4	12	94	472	28.4%	56	48	104	6.3%	528	31.7%	1,605	96.5%	858	55	803	93.6%
4c	2,398	1,862	77.6%	80	5	237	4	39	171	536	22.4%	37	105	142	5.9%	573	23.9%	2,302	96.0%	1,599	53	1,546	96.7%



4d	1,417	916	64.6%	36	-	334	16	23	92	501	35.4%	33	52	85	6.0%	534	37.7%	1,288	90.9%	760	7	753	99.1%
4e	2,338	1,951	83.4%	53	1	163	0	36	134	387	16.6%	46	70	116	5.0%	433	18.5%	2,269	94.0%	1,347	95	1,252	92.9%
4f	2,326	1,776	76.4%	65	2	275	2	45	161	550	23.6%	59	122	181	7.8%	609	26.2%	2,229	94.0%	1,259	61	1,198	95.2%
5a	2,662	2,163	81.3%	36	4	241	0	38	180	499	18.7%	27	88	115	4.3%	526	19.8%	2,354	94.0%	1,398	33	1,365	97.6%
5b	1,805	1,474	81.7%	59	9	84	1	28	150	331	18.3%	19	78	97	5.4%	350	19.4%	1,467	94.0%	868	29	839	96.7%
5c	2,416	788	32.6%	132	18	1,138	0	75	265	1,628	67.4%	38	198	236	9.8%	1,666	69.0%	1,837	94.0%	1,245	162	1,083	87.0%
5d	3,039	2,401	79.0%	32	6	351	1	65	183	638	21.0%	34	87	121	4.0%	672	22.1%	2,711	94.0%	1,431	82	1,349	94.3%
5e	1,114	989	88.8%	9	-	31	1	15	69	125	11.2%	3	15	18	1.6%	128	11.5%	830	94.0%	421	6	415	98.6%
5f	2,128	1,686	79.2%	48	11	185	0	31	167	442	20.8%	39	81	120	5.6%	481	22.6%	1,811	94.0%	1,071	28	1,043	97.4%
6a	2,699	2,226	82.5%	167	12	66	0	50	178	473	17.5%	36	109	145	5.4%	509	18.9%	2,413	94.0%	1,534	92	1,442	94.0%
6b	3,310	2,689	81.2%	139	11	185	1	41	244	621	18.8%	55	143	198	6.0%	676	20.4%	3,115	94.0%	1,994	97	1,897	95.1%
6c	2,342	1,957	83.6%	138	14	42	0	45	146	385	16.4%	28	81	109	4.7%	413	17.6%	2,042	94.0%	1,279	66	1,213	94.8%
6d	2,468	2,055	83.3%	82	18	89	0	61	163	413	16.7%	36	91	127	5.1%	449	18.2%	2,364	94.0%	1,550	72	1,478	95.4%
6e	2,785	2,389	85.8%	73	17	89	0	28	189	396	14.2%	39	90	129	4.6%	435	15.6%	2,500	94.0%	1,658	59	1,599	96.4%
7a	3,243	2,316	71.4%	249	17	231	0	164	266	927	28.6%	71	302	373	11.5%	998	30.8%	2,625	94.0%	1,483	17	1,466	98.9%
7b	2,906	2,127	73.2%	173	9	195	2	175	225	779	26.8%	66	276	342	11.8%	845	29.1%	2,254	94.0%	1,246	22	1,224	98.2%
7c	1,909	1,521	79.7%	68	4	150	0	45	121	388	20.3%	27	93	120	6.3%	415	21.7%	1,532	94.0%	937	14	923	98.5%
7d	3,211	2,357	73.4%	143	16	386	0	54	255	854	26.6%	46	132	178	5.5%	900	28.0%	2,479	94.0%	1,249	56	1,193	95.5%
7e	2,706	2,087	77.1%	108	5	235	1	48	222	619	22.9%	52	128	180	6.7%	671	24.8%	2,092	94.0%	1,159	8	1,151	99.3%
8a	3,568	2,462	69.0%	65	13	776	0	38	214	1,106	31.0%	47	96	143	4.0%	1,153	32.3%	3,515	94.0%	479	16	463	96.7%
8b	2,734	1,986	72.6%	92	15	426	1	54	160	748	27.4%	57	116	173	6.3%	805	29.4%	2,601	94.0%	519	28	491	94.6%
8c	3,392	2,081	61.4%	139	10	918	2	55	187	1,311	38.6%	38	83	121	3.6%	1,349	39.8%	3,065	94.0%	1,251	56	1,195	95.5%
8d	2,928	1,963	67.0%	55	17	593	1	55	244	965	33.0%	47	129	176	6.0%	1,012	34.6%	2,891	94.0%	215	112	103	47.9%
8e	1,409	1,110	78.8%	11	3	173	1	23	88	299	21.2%	28	45	73	5.2%	327	23.2%	1,409	94.0%	0	0	-	#DIV/0!
9a	2,843	2,043	71.9%	204	12	287	2	63	232	800	28.1%	54	166	220	7.7%	854	30.0%	2,300	94.0%	1,341	31	1,310	97.7%
9b	2,231	1,730	77.5%	52	7	291	0	49	102	501	22.5%	49	98	147	6.6%	550	24.7%	2,048	94.0%	1,410	55	1,355	96.1%
9c	2,980	2,024	67.9%	57	3	688	0	23	185	956	32.1%	23	85	108	3.6%	979	32.9%	2,165	94.0%	1,199	31	1,168	97.4%
9d	3,427	1,773	51.7%	491	8	773	0	148	234	1,654	48.3%	35	273	308	9.0%	1,689	49.3%	2,694	94.0%	1,794	82	1,712	95.4%
9e	1,745	1,110	63.6%	24	6	483	6	9	107	635	36.4%	12	31	43	2.5%	647	37.1%	1,198	94.0%	689	19	670	97.2%



10a	1,487	959	64.5%	145	4	73	0	151	155	528	35.5%	32	213	245	16.5%	560	37.7%	1,151	94.0%	611	5	606	99.2%
10b	2,458	810	33.0%	550	57	72	1	625	343	1,648	67.0%	113	941	1,054	42.9%	1,761	71.6%	1,674	94.0%	1,033	50	983	95.2%
10c	2,227	1,804	81.0%	106	8	97	1	43	168	423	19.0%	33	105	138	6.2%	456	20.5%	1,815	94.0%	995	42	953	95.8%
10d	3,359	2,904	86.5%	73	6	81	1	54	240	455	13.5%	40	126	166	4.9%	495	14.7%	2,598	94.0%	1,456	21	1,435	98.6%
10e	2,267	1,289	56.9%	426	9	109	0	251	183	978	43.1%	87	346	433	19.1%	1,065	47.0%	1,782	94.0%	973	33	940	96.6%
10f	1,859	1,262	67.9%	235	14	91	1	88	168	597	32.1%	32	185	217	11.7%	629	33.8%	1,442	94.0%	794	23	771	97.1%
11a	2,609	2,221	85.1%	40	12	97	0	33	206	388	14.9%	32	95	127	4.9%	420	16.1%	2,095	94.0%	1,135	23	1,112	98.0%
11b	1,826	1,469	80.4%	48	4	120	3	39	143	357	19.6%	22	100	122	6.7%	379	20.8%	1,447	94.0%	791	23	768	97.1%
11c	1,911	1,617	84.6%	48	4	108	0	20	114	294	15.4%	22	64	86	4.5%	316	16.5%	1,505	94.0%	846	10	836	98.8%
11d	2,176	1,715	78.8%	31	7	235	2	35	151	461	21.2%	19	64	83	3.8%	480	22.1%	1,592	94.0%	877	32	845	96.4%
11e	1,314	1,102	83.9%	26	6	52	0	25	103	212	16.1%	2	59	61	4.6%	214	16.3%	1,070	94.0%	618	21	597	96.6%
11f	3,718	2,004	53.9%	169	5	1,285	3	88	164	1,714	46.1%	58	138	196	5.3%	1,772	47.7%	3,429	94.0%	2,514	200	2,314	92.0%
12a	1,845	845	45.8%	414	19	117	0	236	214	1,000	54.2%	73	328	401	21.7%	1,073	58.2%	1,349	94.0%	833	24	809	97.1%
12b	1,233	859	69.7%	169	3	52	0	67	83	374	30.3%	17	92	109	8.8%	391	31.7%	1,025	94.0%	669	36	633	94.6%
12c	2,431	1,848	76.0%	158	16	54	0	109	246	583	24.0%	49	180	229	9.4%	632	26.0%	2,093	94.0%	1,360	51	1,309	96.3%
12d	2,630	1,743	66.3%	422	17	109	5	101	233	887	33.7%	54	179	233	8.9%	941	35.8%	2,172	94.0%	1,338	60	1,278	95.5%
12e	1,674	1,182	70.6%	231	9	82	0	63	107	492	29.4%	46	81	127	7.6%	538	32.1%	1,521	94.0%	1,029	40	989	96.1%
12f	2,018	1,703	84.4%	81	16	29	0	43	146	315	15.6%	30	86	116	5.7%	345	17.1%	1,716	94.0%	1,048	24	1,024	97.7%
12g	1,834	1,236	67.4%	349	4	40	1	31	173	598	32.6%	30	89	119	6.5%	628	34.2%	1,521	94.0%	989	60	929	93.9%
13a	2,381	1,944	81.6%	104	18	72	0	57	186	437	18.4%	28	111	139	5.8%	465	19.5%	2,030	94.0%	1,464	150	1,314	89.8%
13b	2,609	1,858	71.2%	51	13	495	3	17	172	751	28.8%	30	74	104	4.0%	781	29.9%	2,325	94.0%	1,115	42	1,073	96.2%
13c	2,909	2,375	81.6%	103	16	175	10	37	193	534	18.4%	37	116	153	5.3%	571	19.6%	2,563	94.0%	1,252	50	1,202	96.0%
13d	3,675	3,184	86.6%	56	5	100	1	42	287	491	13.4%	32	105	137	3.7%	523	14.2%	3,018	94.0%	1,501	40	1,461	97.3%
13e	1,591	1,027	64.6%	209	4	203	2	43	103	564	35.4%	34	96	130	8.2%	598	37.6%	1,430	94.0%	1,015	27	988	97.3%
14a	2,334	1,373	58.8%	341	13	87	2	270	248	961	41.2%	64	392	456	19.5%	1,025	43.9%	1,848	94.0%	1,152	56	1,096	95.1%
14b	3,557	1,551	43.6%	609	43	202	2	547	603	2,006	56.4%	128	986	1,114	31.3%	2,134	60.0%	2,661	94.0%	1,443	61	1,382	95.8%
14c	1,362	472	34.7%	330	23	189	2	189	157	890	65.3%	58	310	368	27.0%	948	69.6%	993	94.0%	529	27	502	94.9%
14d	1,965	602	30.6%	277	38	419	3	356	270	1,363	69.4%	35	556	591	30.1%	1,398	71.1%	1,551	94.0%	930	32	898	96.6%
14e	1,103	473	42.9%	328	11	69	1	79	142	630	57.1%	43	133	176	16.0%	673	61.0%	828	94.0%	538	18	520	96.7%



15a	2,459	1,846	75.1%	170	10	108	0	106	219	613	24.9%	90	212	302	12.3%	703	28.6%	2,005	94.0%	1,066	22	1,044	97.9%
15b	3,317	2,874	86.6%	90	24	56	0	37	236	443	13.4%	57	124	181	5.5%	500	15.1%	2,793	94.0%	1,679	46	1,633	97.3%
15c	2,196	1,896	86.3%	51	4	31	3	60	151	300	13.7%	36	119	155	7.1%	336	15.3%	1,886	94.0%	1,059	43	1,016	95.9%
15d	1,541	1,277	82.9%	88	6	34	2	26	108	264	17.1%	32	55	87	5.6%	296	19.2%	1,305	94.0%	813	23	790	97.2%
15e	2,427	1,643	67.7%	389	9	93	0	107	186	784	32.3%	36	171	207	8.5%	820	33.8%	1,953	94.0%	1,265	60	1,205	95.3%
15f	1,913	1,677	87.7%	38	9	17	0	42	130	236	12.3%	31	95	126	6.6%	267	14.0%	1,639	94.0%	985	33	952	96.6%
16a	2,661	2,037	76.6%	204	29	51	0	96	244	624	23.4%	46	182	228	8.6%	670	25.2%	2,115	94.0%	1,124	34	1,090	97.0%
16b	1,374	1,113	81.0%	71	7	14	0	46	123	261	19.0%	24	97	121	8.8%	285	20.7%	1,120	94.0%	603	10	593	98.3%
16c	1,946	1,565	80.4%	132	9	81	0	43	116	381	19.6%	21	82	103	5.3%	402	20.7%	1,559	94.0%	787	12	775	98.5%
16d	2,925	2,267	77.5%	227	7	141	0	56	227	658	22.5%	42	135	177	6.1%	700	23.9%	2,410	94.0%	1,346	22	1,324	98.4%
16e	1,554	1,265	81.4%	93	14	44	0	29	109	289	18.6%	33	61	94	6.0%	322	20.7%	1,376	94.0%	877	40	837	95.4%
16f	3,403	2,460	72.3%	293	37	182	1	112	318	943	27.7%	97	201	298	8.8%	1,040	30.6%	2,385	94.0%	1,211	45	1,166	96.3%
17a	2,205	1,472	66.8%	87	5	474	8	52	107	733	33.2%	24	82	106	4.8%	757	34.3%	1,903	94.0%	1,215	68	1,147	94.4%
17b	2,285	1,292	56.5%	299	28	167	1	210	288	993	43.5%	52	333	385	16.8%	1,045	45.7%	1,826	94.0%	1,223	77	1,146	93.7%
17c	1,827	1,297	71.0%	141	20	182	2	60	125	530	29.0%	35	110	145	7.9%	565	30.9%	1,569	94.0%	1,080	140	940	87.0%
17d	3,281	2,116	64.5%	310	30	197	7	296	325	1,165	35.5%	98	486	584	17.8%	1,263	38.5%	2,641	94.0%	1,431	54	1,377	96.2%
17e	1,661	1,041	62.7%	239	10	103	0	122	146	620	37.3%	54	190	244	14.7%	674	40.6%	1,407	94.0%	872	19	853	97.8%
17f	2,988	1,729	57.9%	410	11	347	0	220	271	1,259	42.1%	65	357	422	14.1%	1,324	44.3%	2,282	94.0%	1,129	32	1,097	97.2%
18a	2,686	1,437	53.5%	480	19	289	0	228	233	1,249	46.5%	101	329	430	16.0%	1,350	50.3%	2,060	94.0%	1,199	87	1,112	92.7%
18b	1,473	910	61.8%	307	8	43	0	75	130	563	38.2%	27	136	163	11.1%	590	40.1%	1,149	94.0%	688	30	658	95.6%
18c	2,123	1,600	75.4%	213	10	79	0	44	177	523	24.6%	33	93	126	5.9%	556	26.2%	1,700	94.0%	888	17	871	98.1%
18d	2,456	1,025	41.7%	789	13	204	1	167	257	1,431	58.3%	65	266	331	13.5%	1,496	60.9%	1,660	94.0%	956	50	906	94.8%
18e	2,047	1,499	73.2%	267	19	107	3	38	114	548	26.8%	12	73	85	4.2%	560	27.4%	1,740	94.0%	709	30	679	95.8%
18f	1,527	1,396	91.4%	26	-	33	0	16	56	131	8.6%	6	36	42	2.8%	137	9.0%	1,387	94.0%	909	61	848	93.3%
18g	1,899	1,454	76.6%	85	16	122	0	62	160	445	23.4%	23	142	165	8.7%	468	24.6%	1,571	94.0%	859	66	793	92.3%
19a	1,701	1,409	82.8%	34	5	118	1	24	110	292	17.2%	16	52	68	4.0%	308	18.1%	1,452	94.0%	835	27	808	96.8%
19b	1,810	1,535	84.8%	45	2	88	0	18	122	275	15.2%	11	60	71	3.9%	286	15.8%	1,505	94.0%	790	18	772	97.7%
19c	2,947	2,346	79.6%	123	15	213	2	58	190	601	20.4%	44	131	175	5.9%	645	21.9%	2,632	94.0%	1,390	104	1,286	92.5%
19d	1,217	858	70.5%	131	5	95	0	71	57	359	29.5%	42	104	146	12.0%	401	32.9%	1,132	94.0%	932	95	837	89.8%



19e	2,911	2,272	78.0%	118	18	209	0	48	246	639	22.0%	26	174	200	6.9%	665	22.8%	2,512	94.0%	1,580	76	1,504	95.2%
19f	2,758	2,256	81.8%	46	3	247	3	41	162	502	18.2%	21	85	106	3.8%	523	19.0%	2,345	94.0%	1,466	32	1,434	97.8%
20a	1,018	411	40.4%	280	4	116	1	95	111	607	59.6%	10	150	160	15.7%	617	60.6%	738	94.0%	457	7	450	98.5%
20b	1,733	834	48.1%	415	17	123	2	147	195	899	51.9%	27	254	281	16.2%	926	53.4%	1,278	94.0%	681	32	649	95.3%
20c	1,983	1,229	62.0%	103	9	317	7	113	205	754	38.0%	31	227	258	13.0%	785	39.6%	1,672	94.0%	1,019	32	987	96.9%
20d	3,714	2,436	65.6%	458	23	231	1	184	381	1,278	34.4%	78	398	476	12.8%	1,356	36.5%	2,870	94.0%	1,512	28	1,484	98.1%
20e	2,295	1,483	64.6%	333	17	126	2	159	175	812	35.4%	46	244	290	12.6%	858	37.4%	1,758	94.0%	893	23	870	97.4%
20f	2,283	1,142	50.0%	350	9	498	2	138	144	1,141	50.0%	37	222	259	11.3%	1,178	51.6%	1,668	94.0%	944	42	902	95.6%
<b>Totals</b>	<b>269,942</b>	<b>191,704</b>	<b>NA</b>	<b>20,024</b>	<b>1,321</b>	<b>25,660</b>	<b>34</b>	<b>10,155</b>	<b>20,921</b>	<b>78,238</b>	<b>29.0%</b>	<b>4,866</b>	<b>18,557</b>	<b>23,423</b>	<b>8.7%</b>	<b>83,104</b>	<b>30.8%</b>	<b>225,829</b>	<b>83.7%</b>	<b>126,115</b>	<b>5,332</b>	<b>120,783</b>	<b>95.8%</b>