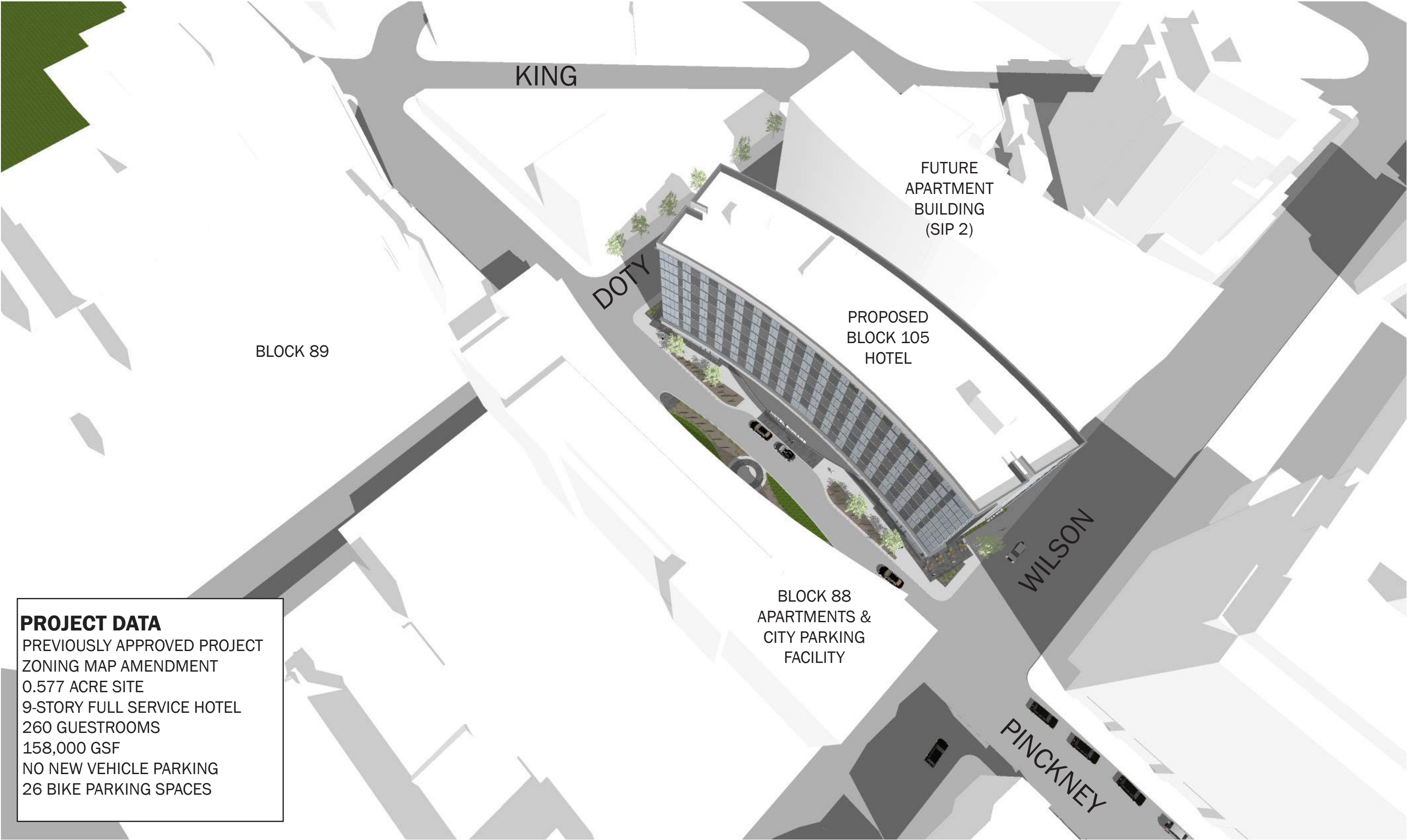

JUDGE DOYLE SQUARE

HOTEL DEVELOPMENT | BLOCK 105 | MADISON. WISCONSIN

CITY OF MADISON UDC SUBMITTAL
JULY 28, 2021 (REVISED AUG 26)

Kahler Slater

SITE CONTEXT



PROJECT DATA

PREVIOUSLY APPROVED PROJECT
ZONING MAP AMENDMENT
0.577 ACRE SITE
9-STORY FULL SERVICE HOTEL
260 GUESTROOMS
158,000 GSF
NO NEW VEHICLE PARKING
26 BIKE PARKING SPACES

PROJECT APPROVALS



UDC INITIAL APPROVAL IN JANUARY 2021

PLAN COMMISSION APPROVAL IN FEBRUARY 2021

COMMON COUNCIL APPROVAL IN FEBRUARY 2021

CONDITIONS NEEDED FOR FINAL UDC APPROVAL

- A. FINAL DETAILS OF END WALL
- B. MORE DETAIL ON THE METAL PANEL STRIATION
- C. FULLY DETAILED ROOF PLAN
- D. LANDSCAPE REFINEMENT & COORDINATION

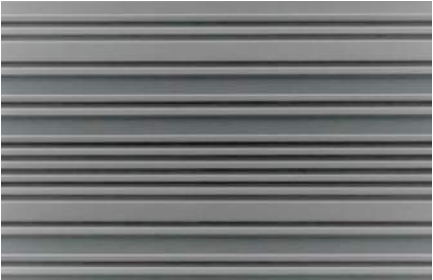
A. END WALL DETAILS (PRIOR SUBMITTAL)



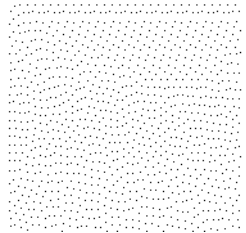
A. PREVIOUSLY APPROVED MATERIAL BOARD



METAL PANEL 1:
CORRUGATED METAL PANEL w/ VARIEGATED PANEL SIZE.
BASIS OF DESIGN: MORIN MATRIX SERIES



COLOR:
ASCOT WHITE



METAL PANEL 2:
MCM PANEL SYSTEM w/ ALTERNATING COLORS
BASIS OF DESIGN: REYNOBOND COMPOSITE PANELS



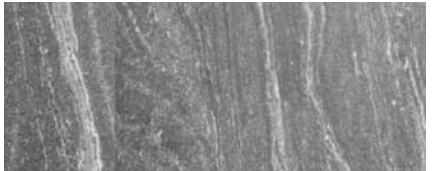
COLOR 1:
BLACK



COLOR 2:
CHARCOAL GREY



STONE:
GRANITE - HONED FINISH
RUNNING BOND w/ ALTERNATING HEIGHT & WIDTH



EXTERIOR MATERIALS

Copyright © 2020 Kahler Slater, Inc. All rights reserved.

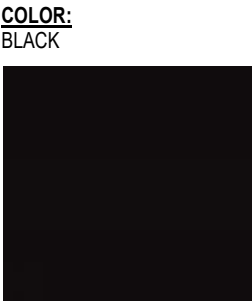
Kahler Slater
220033.00
JUDGE DOYLE SQUARE - SECTION 3 - BLOCK 105

ASK-024 | 01/18/21

A. PREVIOUSLY APPROVED MATERIAL BOARD



METAL PANEL 3:
FLAT SEAM METAL PANEL w/ VERTICAL REGULAR PATTERN
BASIS OF DESIGN ATAS VERSA-SEAM



EXTERIOR MATERIALS

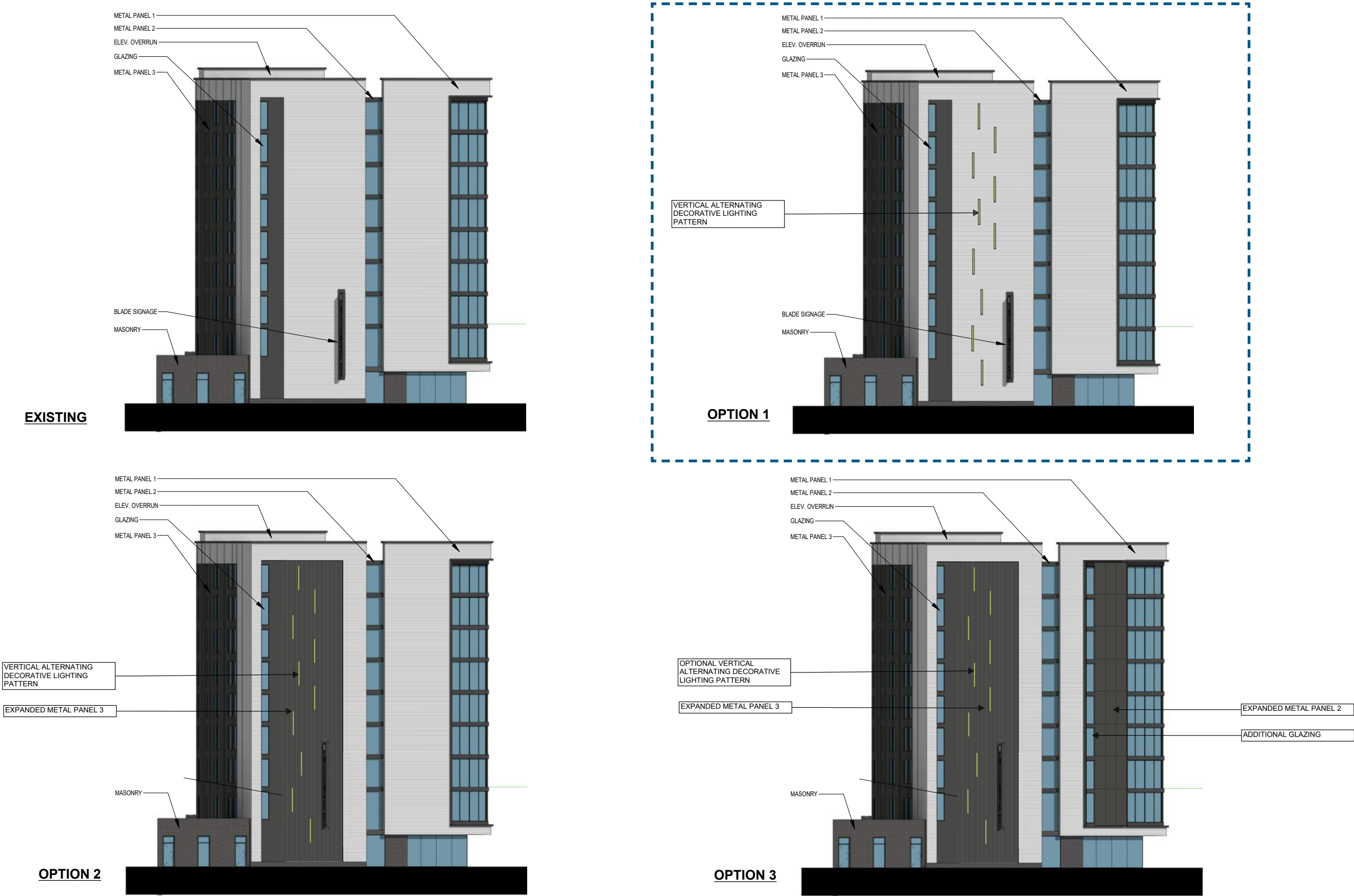
Copyright © 2020 Kahler Slater, Inc. All rights reserved.

Kahler Slater

220033.00
JUDGE DOYLE SQUARE - SECTION 3 - BLOCK 105

ASK-025 | 01/18/21

A. END WALL DETAILS (PRIOR OPTIONS)



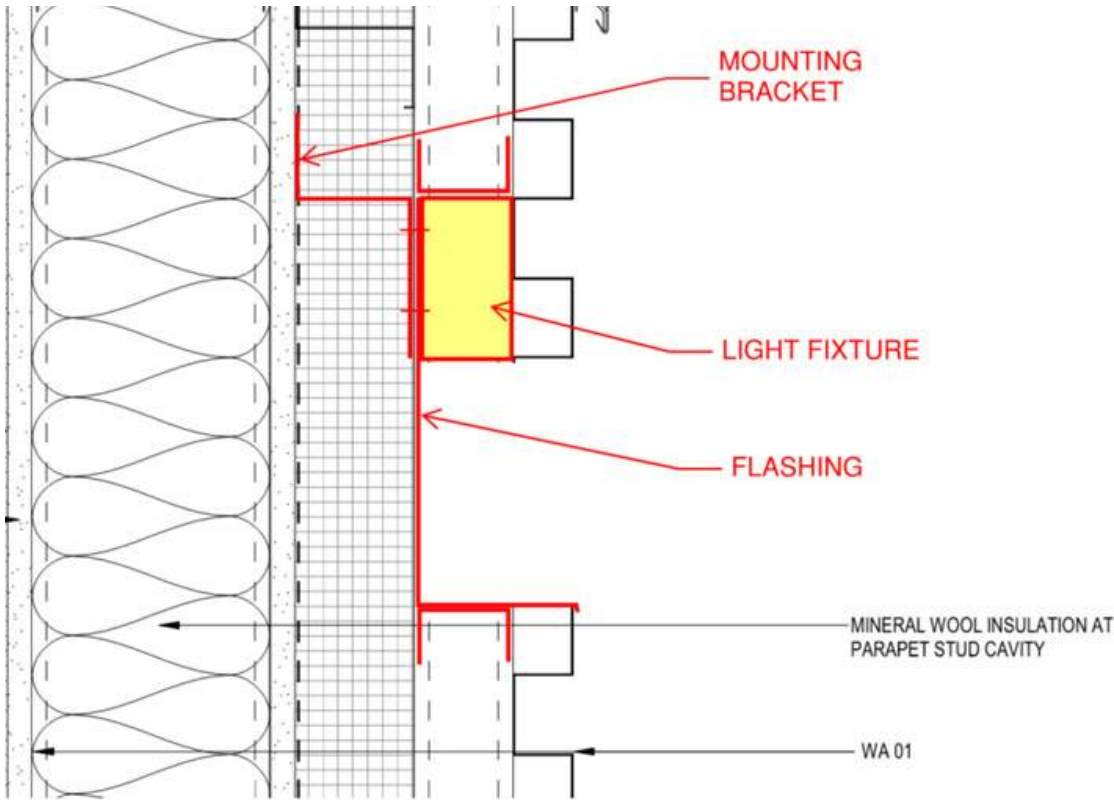
A. END WALL DETAILS (PROPOSED DETAILS)



A. END WALL DETAILS (PROPOSED DETAILS)

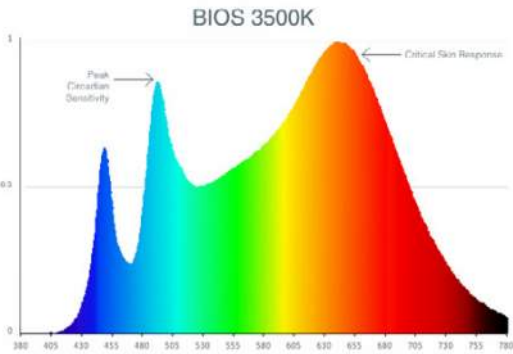


A. RECESSED FACADE STRIP LIGHTING CONCEPT



EXAMPLE DETAIL

BIOS SkyBlue™ Technology is designed to provide the specific circadian stimulus to improve overall sleep quality, recovery during the night, and overall feelings of well-being. The non-visual light signals that stimulate our circadian system have peak intensity in the "sky blue" region. As the diagram below illustrates, BIOS SkyBlue technology shifts the peak LED spectral intensity (490 nm) to align better with the peak response of circadian stimulus. Also note the enhanced deep-red (near 660 nm) spectrum.



All LED drivers used at Lumenwerx are deemed to have a low risk level of flicker, of 5 % or less below 90Hz operational as defined by IEEE standard 1789-2015 LED.



WELL for Mind -This luminaire meets WELL for mind as it is a human centric luminaire offering quality light, excellent color, and smooth optics. If any of these features are incorporated in a luminaire, it can improve the ability to focus, concentrate, and persist longer on a given task. This fixture harmoniously operates in a space to assist the mind.

For more information, please contact well@lumenwerx.com

PATTERN LENGTH

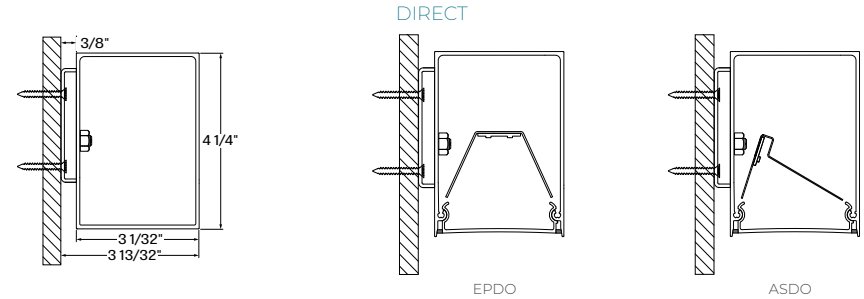
Via 3 Seal can be ordered in 1' and/or 1" increments. Continuous runs are available for run lengths over 12'. The minimum length is 2'. All individual sections are joined together onsite using the joiner kits provided. Lumenwerx joiner kits are extremely simple to work with in the field and result in a fixture that appears virtually seamless with no light leak at any connection.

VIA 3 SEAL

WALL PATTERN
DIRECT, INDIRECT
STATIC WHITE, BIOS ST/DY
VIA WEATHER SERIES

LUMENWERX

Section Views



Environment Options

The Via Weather Series offers four levels of protective sealing: Level 1, Level 2, Level 3, and Level 4. Via 3 Seal is available with two environment options: Wet Suitable (WET) at Level 1, and Wet Listed (WETL) at Level 2. For other levels of protective sealing, please see Via Wet spec sheets for Level 3, and Via Splash spec sheets for Level 4.

Photometrics

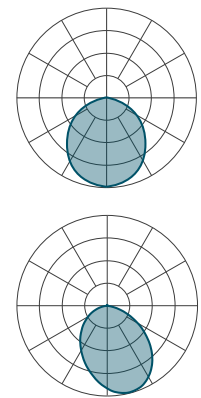
MULTIPLIER TABLES

Please follow the multiplier tables to ensure correct lumen value. Lensing, CCT and CRI, will change the lumen output.

Multiplier - CCT/CRI

CCT (K)	Watts		LPW	
	CRI80	CRI90	CRI80	CRI90
2700	1.06	1.27	0.94	0.79
3000	1.02	1.23	0.98	0.81
3500	1.00	1.19	1.00	0.84
4000	1.00	1.18	1.00	0.85
5000	0.95	1.12	1.05	0.89

DIRECT



EPDO - Delivered Lumens at 40K at 80 CRI

LUMENS PER FOOT	TOTAL LUMENS PER 4FT	INPUT WATTS	LPW
500	2000	19.8	101
750	3000	30.7	98
1000	4000	42.3	95

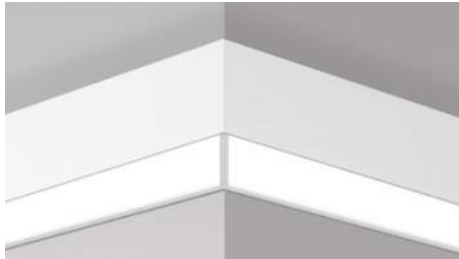
ASDO - Delivered Lumens at 40K at 80 CRI

LUMENS PER FOOT	TOTAL LUMENS PER 4FT	INPUT WATTS	LPW
500	2000	17.7	113
750	3000	27.9	107
1000	4000	39	103

A. RECESSED FACADE STRIP LIGHTING CONCEPT

VIA 3 SEAL

WALL PATTERN
DIRECT, INDIRECT
STATIC WHITE, BIOS ST/DY
VIA WEATHER SERIES



LEVO - Leveled outside corner

DESCRIPTION

Sealed with silicone gaskets, Via Seal fixtures are intended for wet locations and can be pendant, surface, wall, or recessed mounted. They can act alone as discrete luminaires, or be arranged in continuous lines or patterns. Via 3 Seal is suitable for wet locations where temperatures are moderate, and in which spaces are regularly wiped down and frequently in contact with debris and/or moisture. The fixture can be used to create continuous, unbroken lines of light. Via 3 Seal is also offered as Wet Listed certified by ETL (Electrical Testing Laboratories), in which case, it is able to withstand smaller particles of debris and light water infiltration. Via 3 Seal Wet Listed can also be used to create continuous lines of light, but with subtle breaks at 12-foot increments. See separate spec sheets for patterns and other available mountings.



Project: _____
Type: _____



Up to 113 lm/W performance

Order Guide

LUMINAIRE ID	DISTRI.	ENVIRONMENT ¹	DIRECT OPTIC Do not specify for Indirect fixture		INDIRECT OPTIC Do not specify for Direct fixture		LIGHT SOURCE ⁵	CRI
V3SEALWPAT								
V3SEALWPAT - Via 3" Seal Wall Pattern	D - Direct I - Indirect	WET ² - Wet Suitable (IP44) WETL ^{2,3} - Wet Listed (IP54) ¹ See page 3 for more information on each environment option. ² Suitable for outdoor environments only when installed under canopy. Not suitable for extreme weather environments. Consult factory for low temperature applications. ³ Can be slightly exposed to water. A minimal shadow line visible at every 12'.	EPDO - Environmentally Protected Direct Optic ASDO - Asymmetric Soft Direct Optic	EPIO - Environmentally Protected Indirect Optic ASIO ⁴ - Asymmetric Soft Indirect Optic WIO2 - Widespread Indirect Optic ⁴ Not available with BIOS.	SW - Static white BIOSST - Static biologically-optimized lighting BIOSDY - Dynamic biologically-optimized lighting ⁵ Chromawerx Sola and Duo also available. Consult other spec sheet.	80 - 80 CRI 90 ⁶ - 90 CRI ⁶ Not available with BIOS.		
DIR. LUM. PACK. Do not specify for Indirect fixture	IND. LUM. PACK. Do not specify for Direct fixture	COLOR TEMP.	PATTERN LENGTH	CORNER TYPE	CORNER DEGREE	VOLTAGE	DRIVER ¹³	
500 - Low output 500 lm/ft 750 ⁷ - Medium output 750 lm/ft 1000 ⁷ - High output 1000 lm/ft ⁷ Not available with BIOS.	500 - Low output 500 lm/ft 750 ⁸ - Medium output 750 lm/ft 1000 ⁸ - High output 1000 lm/ft ⁸ Not available with BIOS.	27 ⁹ - 2700K 30 - 3000K 35 - 3500K 40 - 4000K 50 ⁹ - 5000K ⁹ Not available with BIOS.	#FT#IN ^{10 11} - Specify nominal length (#) in 1' and/or 1" increments Standard nominal lengths: Continuous runs: lengths over 12' ¹⁰ Minimum 2'. ¹¹ With BIOSDY, specify in 2' increments only.	LEVI - Leveled inside corner LEVO - Leveled outside corner	90(#)- 90° corner, specify the number of corners (#)	120 - 120V 277 - 277V UNV - 120V-277V 347 ¹² - 347V ¹² Available with D1 only.	D1 - 1% 0-10V DA ¹⁴ - DALI LTEA2W - Lutron 1% - 2 wire FP 120V LDE1 ¹⁴ - Lutron Hi-lume 1% Eco LDE5 ¹⁴ - Lutron 5% EcoSystem ELD1 - eldoLED 1% ECOdrive ELDO - eldoLED 0.1% SOLOdrive ¹³ PoE (Power-over-Ethernet) compatible. Consult factory for details. ¹⁴ On-site commissioning is required.	
ELECTRICAL		EMERGENCY SECTIONS (optional) ^{19 20}			MOUNTING	FINISH	POWER FEED	OPTIONS
					DMB			
1C - 1 circuit #MC ¹⁵ - Multi circuit EC - Emergency fixture NL - Night light fixture GTD ^{16 17 18} - Generator transfer device fixture ¹⁵ Specify total number of circuits (#), including any circuits required for optional emergency sections. Provide drawing or layout specifications. Minimum 4' section per circuit. ¹⁶ Minimum 4' fixture. ¹⁷ Not available with 347V. ¹⁸ Not available for environments where the ambient temperature falls below 0°C (32°F).		#EC## ²¹ - Emergency light section #NL## ²¹ - Night light section #GTD## ^{21 22 23 24} - Generator transfer device section #EMB ^{23 24 25} - Emergency battery ¹⁹ Specify with multi circuit (#MC) electrical option only. ²⁰ Provide drawing or layout specifications. Consult factory for other configurations. Default section length is 4'. ²¹ Specify quantity (#), and section length in feet (##). ²² Minimum 4' section. ²³ Not available with 347V. ²⁴ Not available for environments where the ambient temperature falls below 0°C (32°F). ²⁵ Specify quantity (#). Each battery powers a 4' section.			DMB - Drywall mounting bracket	W - Matte white AL - Aluminum WA - White antimicrobial Silverwerx CF# - Custom finish, specify RAL#	BF - Back feed TF - Top feed EF - End feed	NAT - Natatorium finish CRF - Corrosion-resistant finish

3737 Cote Vertu St-Laurent, Quebec, Canada H4R 2C9
T (514) 225-4304 F (514) 931-4862
www.lumenwerx.com



Lumenwerx reserves the right to modify product specifications without notification.
© Lumenwerx, ULC. All rights reserved.
VIA3SEAL-PAT-WALL-SPEC-REV0 December 15, 2020



VIA 3 SEAL

WALL PATTERN
DIRECT, INDIRECT
STATIC WHITE, BIOS ST/DY
VIA WEATHER SERIES

Leveled Corner

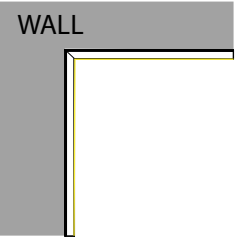


90° Leveled Corner

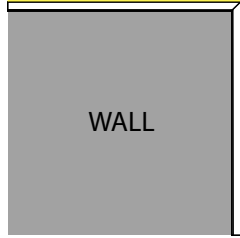
HOW TO SPECIFY A PATTERN?

- Please follow these steps when specifying in order to be as precise as possible.
- (1) We require a drawing illustrating the pattern you are trying to achieve - anything from a simple line drawing to elaborate architectural drawings will suffice.
 - (2) Under **PATTERN LENGTH**, enter the overall length of your pattern - either in feet or inches.
 - (3) Under **CORNER TYPE**, please enter the type (or types) of corner you require.
 - (4) Under **CORNER DEGREE**, please enter the angle in degrees, followed by the number of corners.

PATTERN LENGTH	CORNER TYPE	CORNER DEGREE
#FT#IN ^{1 2} - Specify nominal length (#) in 1' and/or 1" increments Standard nominal lengths: Continuous runs: lengths over 12' ¹ Minimum 2'. ² With BIOSDY, specify in 2' increments only.	LEVI - Leveled inside corner LEVO - Leveled outside corner	90(#)- 90° corner, specify the number of corners (#)



LEVI - Leveled inside corner



LEVO - Leveled outside corner

3737 Cote Vertu St-Laurent, Quebec, Canada H4R 2C9
T (514) 225-4304 F (514) 931-4862
www.lumenwerx.com



Lumenwerx reserves the right to modify product specifications without notification.
© Lumenwerx, ULC. All rights reserved.
VIA3SEAL-PAT-WALL-SPEC-REV0 December 15, 2020

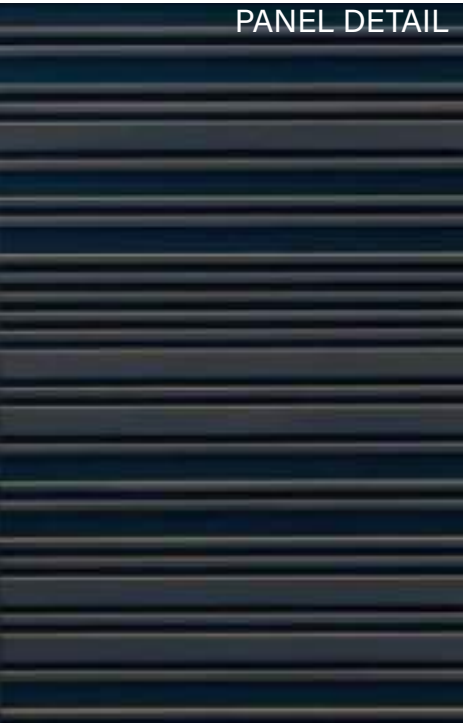
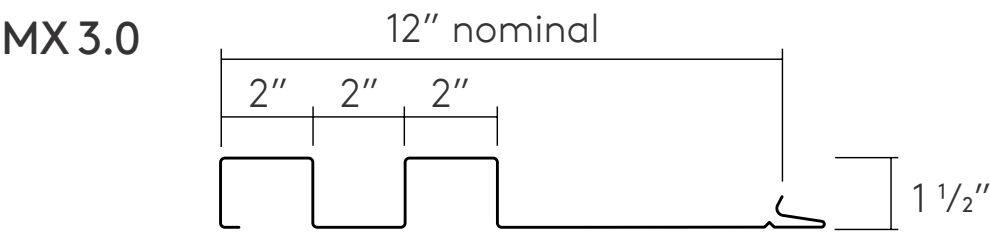
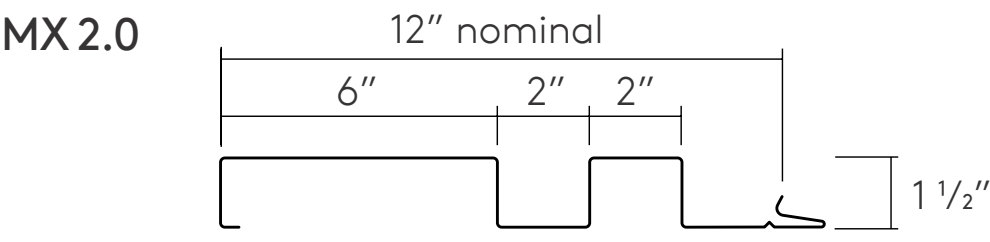
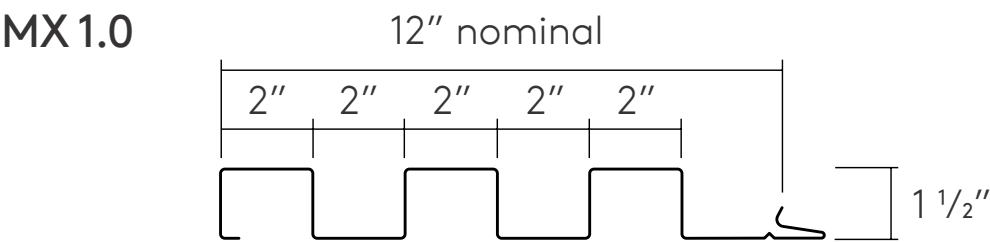


B. METAL PANEL STRIATION (PROPOSED DETAIL)



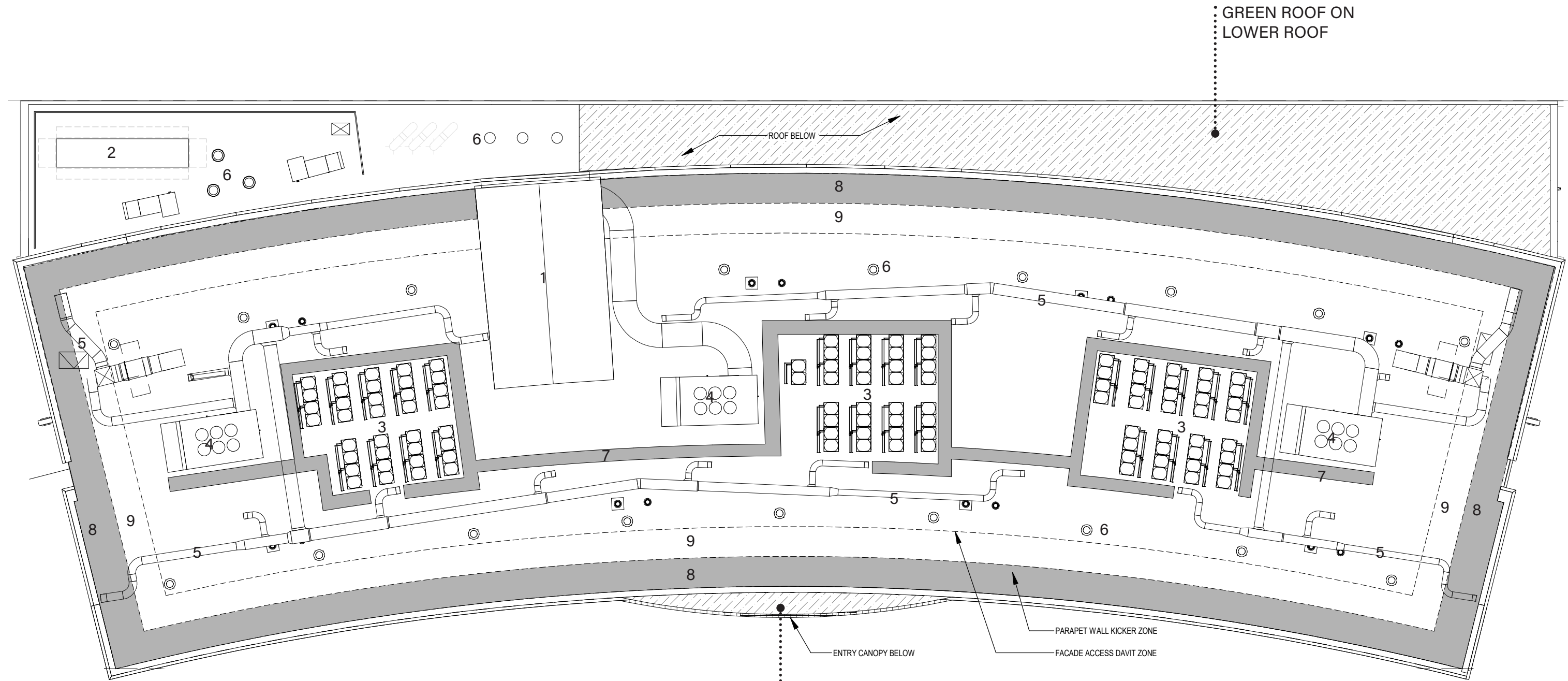
CORRUGATED VARIABLE
WIDTH METAL PANEL
(SEE FOLLOWING PAGE
FOR DETAILS)

B. METAL PANEL STRIATION (PROPOSED DETAIL)



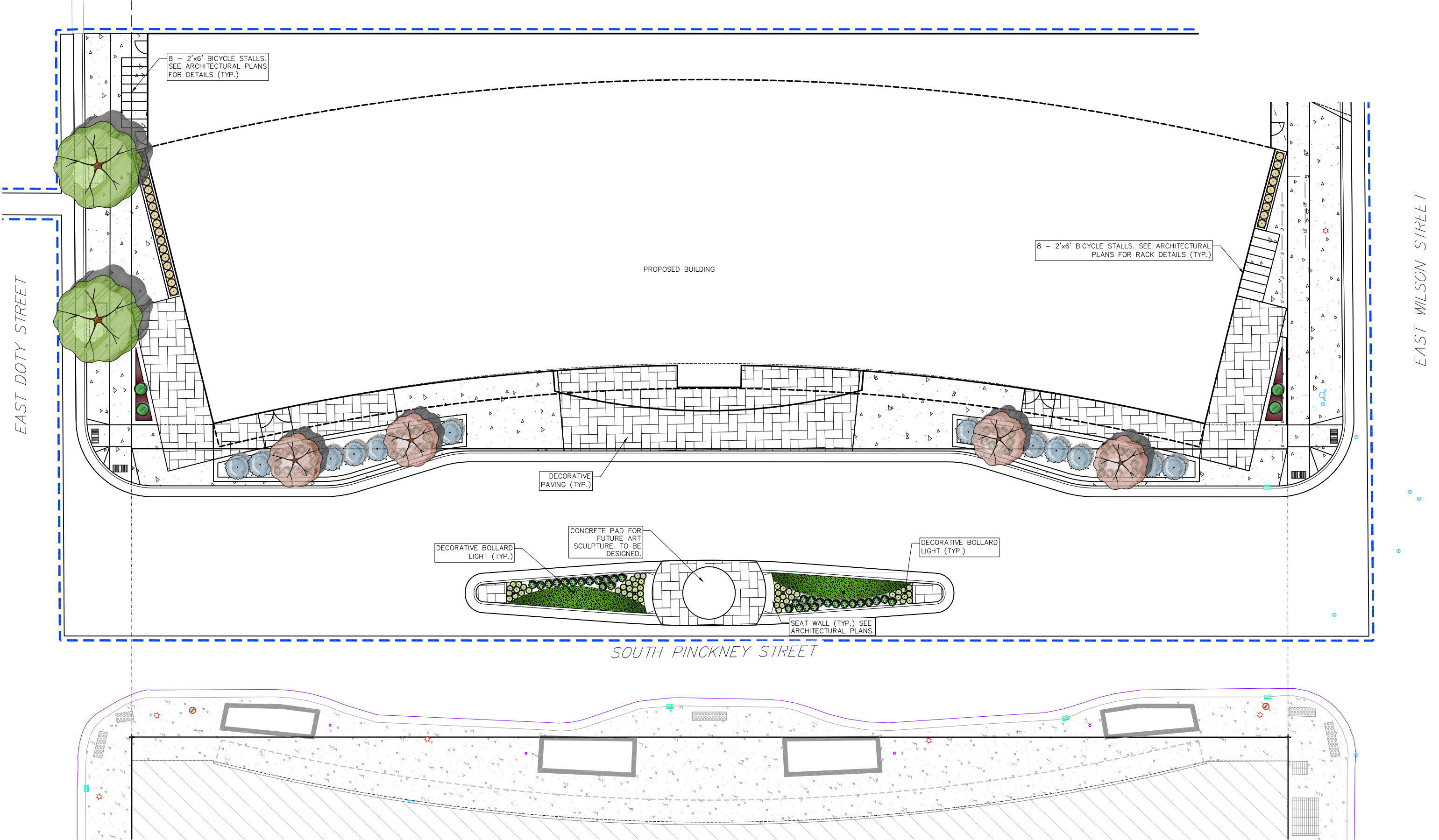
- PANEL GENERAL NOTES
- PANELS TO BE SET IN A HORIZONTAL ORIENTATION
 - PANEL MIX TO BE RANDOMIZED VERTICALLY UP THE FACADE.
 - ALL PANELS TO BE THE SAME COLOR.
 - MITERED CORNER CONDITION.
 - END SEAMS ARE FLUSH.

C. ROOF PLAN (DETAILED LAYOUT)

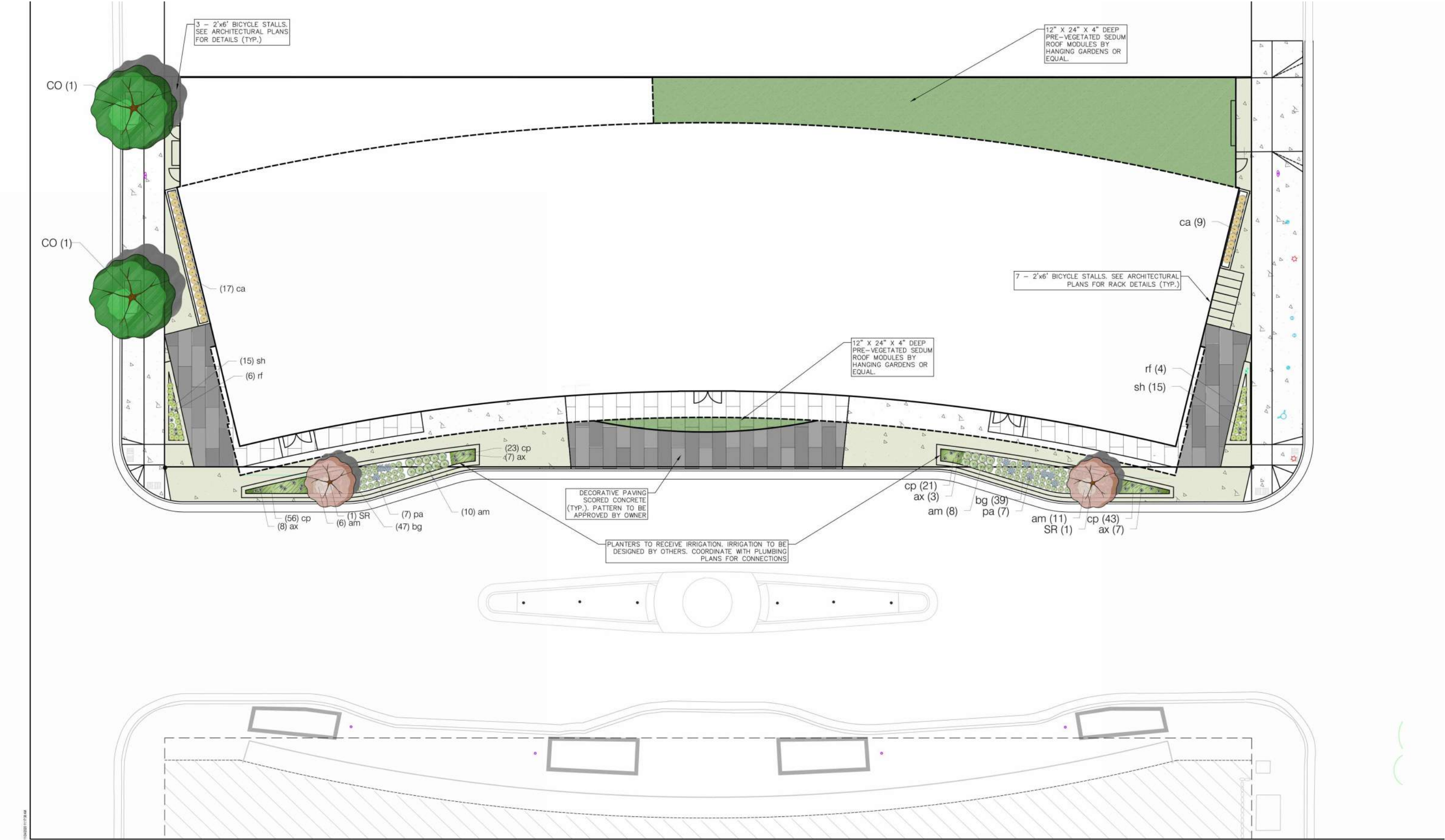


- 1 ELEVATOR OVERRUN
- 2 GENERATOR
- 3 VRF HVAC UNITS
- 4 FRESH AIR HVAC UNIT
- 5 ROOF MOUNTED HVAC DUCTWORK
- 6 EXHAUST FAN
- 7 WALKWAY PADS
- 8 ZONE FOR PARAPET BRACING STRUCTURE
- 9 ZONE FOR WINDOW CLEANING ACCESS TIE-OFFS

D. SITE & LANDSCAPE PLAN (PRIOR INFO)



D. SITE & LANDSCAPE PLAN (LANDSCAPE PLAN UPDATE)



D. SITE & LANDSCAPE PLAN (PLANT SCHEDULE UPDATE)

PLANT SCHEDULE

<u>NEW STREET TREES</u>	<u>BOTANICAL / COMMON NAME</u>	<u>ROOT COND.</u>	<u>SIZE</u>	<u>QTY</u>	
CO	Celtis occidentalis / Common Hackberry	B & B	2.5"Cal	2	
<u>UNDERSTORY TREES</u>	<u>BOTANICAL / COMMON NAME</u>	<u>ROOT COND.</u>	<u>SIZE</u>	<u>QTY</u>	
SR	Syringa reticulata `Ivory Pillar` / Ivory Pillar Japanese Tree Lilac	B & B	2"Cal	4	
<u>PERENNIALS</u>	<u>BOTANICAL / COMMON NAME</u>	<u>ROOT COND.</u>	<u>SIZE</u>	<u>QTY</u>	
ax	Allium x `Summer Beauty` / Summer Beauty Allium	Cont.	4 In	33	
am	Amsonia x `Blue Ice` / Blue Ice Bluestar	Cont.	1 Gal.	46	
bg	Bouteloua gracilis / Blue Grama Grass	Cont.	1 Gal.	105	
ca	Calamagrostis x acutiflora `Karl Foerster` / Feather Reed Grass	Cont.	1 Gal.	26	
pa	Perovskia atriplicifolia `Little Spire` / Little Spire Russian Sage	Cont.	1 Gal.	16	
rf	Rudbeckia fulgida `Goldsturm` / Goldsturm Coneflower	Cont.	1 Gal.	10	
sh	Sporobolus heterolepis / Prairie Dropseed	Cont.	1 Gal.	30	
<u>GROUND COVERS</u>	<u>BOTANICAL / COMMON NAME</u>	<u>ROOT COND.</u>	<u>SIZE</u>	<u>SPACING</u>	<u>QTY</u>
cp	Carex pensylvanica / Pennsylvania Sedge	flat	2" x 2" x 4" plug	10" o.c.	147 sf

GREEN ROOF AREAS



PRE-VEGETATED GREEN ROOF TRAYS- 4" DEPTH 2,414 sf

City of Madison Landscape Worksheet									
Address:	Judge Doyle Square/Block 105	Date:	07.21.21						
Total Square Footage of Developed Area:	(Site Area)	25,127	-	(Building Footprint at Grade)	20,074	=	5053	sf	
Total Landscape Points Required (<5 ac):	5,053	/ 300 =	17	x 5 =	84	84			
Landscape Points Required >5 ac:		0	/ 100 =	0	x 1 =	-			
			Credits/ Existing Landscaping	New/ Proposed Landscaping					
Plant Type/ Element	Min. Size at Installation	Points	Quantity	Points Achieved	Quantity	Points Achieved			
Overstory deciduous tree	2.5" cal	35		0		0			
Tall Evergreen Tree	5-6 feet tall	35		0		0			
Ornamental tree	1.5" cal	15		0	4	60			
Upright evergreen shrub	3-4 feet tall	10		0		0			
Shrub, deciduous	#3 gallon container size, Min. 12-24"	3		0		0			
Shrub, evergreen	#3 gallon container size, Min. 12-24"	4		0	0	0			
Ornamental grasses/perennials	#1 gallon container size, Min. 8-18"	2		0	230	460			
Ornamental/decorative fencing or wall	n/a	4 per 10 LF		0		0			
Existing significant specimen tree		14 per caliper inch. Max. points per tree: 200		0		0			
Landscape Furniture for public seating and/or transit connections		5 points per "seat"		0		0			
Sub Totals				0		520			
		Total Points Provided:		520					

GENERAL NOTES:

1. All plantings shall conform to quality requirements as per ANSI Z60.1.
2. All plant material shall be true to the species, variety and size specified, nursery grown in accordance with good horticultural practices, and under climactic conditions similar to those of the project site.
3. Contact Landscape Architect, in writing, to request any plant material substitutions due to availability issues.
4. All plants shall be guaranteed to be in healthy and flourishing condition during the growing season following installation. All plant material shall be guaranteed for one year from the time of installation.
5. Contractor shall provide a suitable amended topsoil blend for all planting areas. Topsoil shall conform to quality requirements as per Section 625.2(1) of the Standard Specifications for Highway Construction. Provide a minimum of 12" of topsoil in all planting areas and 6" of topsoil in areas to be seeded/sodded.
6. Landscape beds to be mulched with undyed shredded hardwood bark mulch to 3" depth min.

THANK YOU!
