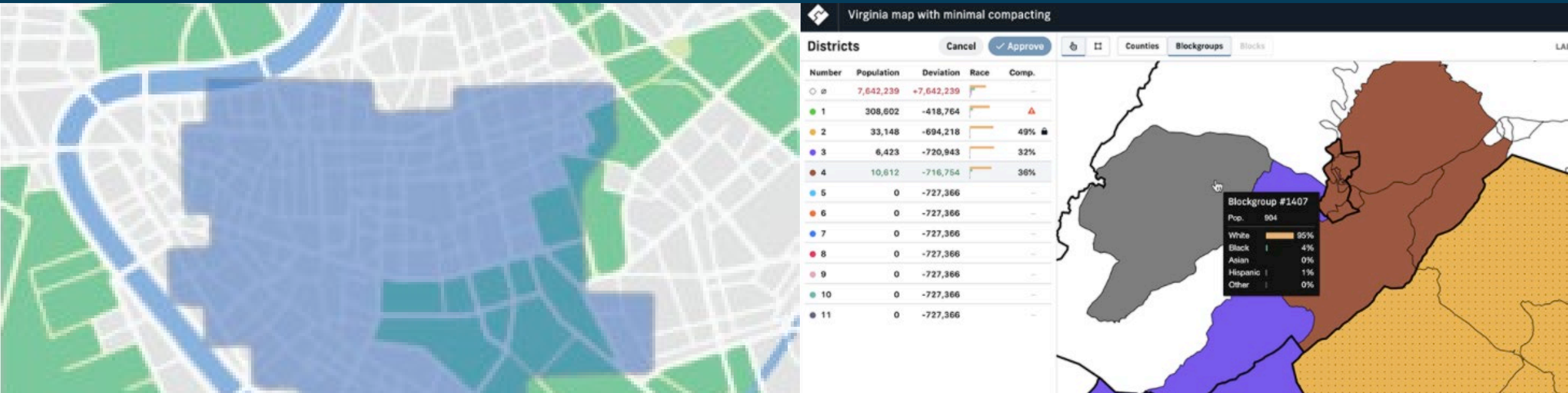


# Redistricting Online Mapping Tools



Ad Hoc Redistricting Committee  
August 26, 2021

# Representable



- Representable allows people to draw communities of interest
- Share information about the interests and needs in those communities



## Tell us about what unites your community.

Next, you will share information about what brings your community together. What do you think is important for politicians to know about your community?

### What is a Community of Interest?

A Community of Interest is a **geographic area** that shares cultural, historical, or **economic** interests. Communities of Interest encourage the drawing of fairer voting districts.

Communities of Interest can include...

- 1 Your neighborhood, or an area you live in.
- 2 The people you would like to choose representatives with.
- 3 A local group that is brought together by a common interest.

← BACK

START →

# Representable



- Website:  
<https://www.representable.org/>
- Tutorial:  
<https://www.representable.org/resources/>
- Examples:  
<https://www.representable.org/map/p/dane-county-redistricting-commission/>

table

Organizations

## Gerrymandering is silencing communities.

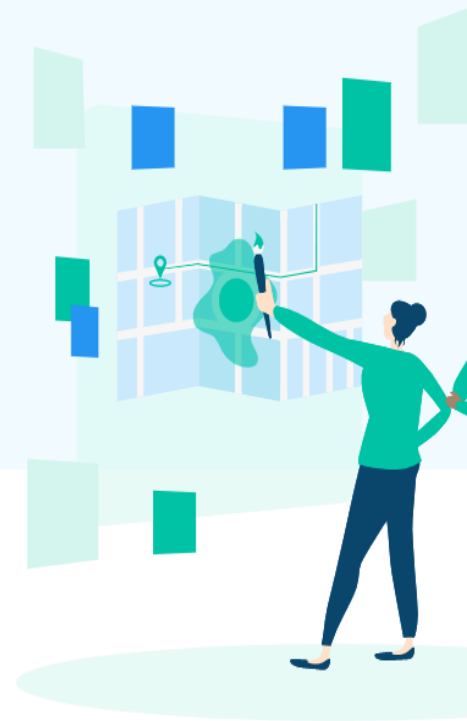
Make your voice heard with Representable and put your community on the map.

GET STARTED

### Are you the leader of an organization?

Many organizations have partnered with Representable.org to collect community maps.

[JOIN AS AN ORGANIZATION](#)



# District Builder



- Block-level district editing
- Real-time feedback during district drawing

A screenshot of the DistrictBuilder website homepage. The header includes the "DistrictBuilder" logo, navigation links for "RESOURCES", "ORGANIZATIONS", and "CONTACT", and buttons for "Sign up" and "Log in". The main content area features a "TOGETHER" logo above the headline "We can build a better map". Below this is a paragraph: "DistrictBuilder puts the power of drawing electoral maps in the hands of the people. Redistricting can be a transparent process that represents communities fairly and prevents gerrymandering." A large background image shows a woman with glasses and a denim jacket looking at a map. A dark banner at the bottom contains the text "DistrictBuilder is a free and open source redistricting tool." and a "Try it out" button.

**DistrictBuilder**

RESOURCES ORGANIZATIONS CONTACT [Sign up](#) [Log in](#)

TOGETHER

## We can build a better map

DistrictBuilder puts the power of drawing electoral maps in the hands of the people. Redistricting can be a transparent process that represents communities fairly and prevents gerrymandering.

✦ DistrictBuilder is a free and open source redistricting tool. [Try it out](#)

# District Builder



- Website:  
<https://www.districtbuilder.org/>
- Tutorial:  
<https://github.com/PublicMapping/districtbuilder/wiki/Getting-Started-with-DistrictBuilder>
- Examples:  
[https://app.districtbuilder.org/o/dane\\_county](https://app.districtbuilder.org/o/dane_county)

A screenshot of the DistrictBuilder website. The header includes the "DistrictBuilder" logo, navigation links for "RESOURCES", "ORGANIZATIONS", and "CONTACT", and buttons for "Sign up" and "Log in". The main content area features a "TOGETHER" logo with a book icon, the headline "We can build a better map", and a paragraph: "DistrictBuilder puts the power of drawing electoral maps in the hands of the people. Redistricting can be a transparent process that represents communities fairly and prevents gerrymandering." A background image shows a woman with glasses and a denim jacket holding a pencil and a map. A dark banner at the bottom contains the text "DistrictBuilder is a free and open source redistricting tool." and a "Try it out" button.

**DistrictBuilder** RESOURCES ORGANIZATIONS CONTACT Sign up Log in

TOGETHER

We can build a better map

DistrictBuilder puts the power of drawing electoral maps in the hands of the people. Redistricting can be a transparent process that represents communities fairly and prevents gerrymandering.

✦ DistrictBuilder is a free and open source redistricting tool. Try it out



- WISE-LR system is strictly for local government use

Welcome Dane County to WISE-Decade 2.0

[Dashboard](#) / WISE-LR Administrator

## Welcome to Local Redistricting: Dane County

- WISE-LR is open for local redistricting!**
- 'Currently Enacted' default ward and supervisory district assignments are approximations and should be closely inspected for accuracy. The assignments are intended only as a possible starting place, and are based on January 2020 BAS Submissions and Census municipal boundaries.
  - Please report any potential data or application issues to LTSB immediately.
  - Please contact the [LTSB GIS Team \(GIS@Legis.Wisconsin.gov\)](mailto:GIS@Legis.Wisconsin.gov) with any questions.

### 0 Confirm Block Lines

Status: Complete

Start Date: 8/16/2021  
Completed Date: 8/18/2021

### 1 Supervisory Districts

Status: In Progress

Start Date: 8/16/2021  
Due Date: 10/15/2021

### 2 Municipal Wards

Status: Pending Stage 1

Tentative Start Date: 10/15/2021  
Tentative Due Date: 12/14/2021

### 3 Reconciliation

#### Stage 1: Tentative Supervisory District Plan

During stage 1, counties have a maximum of 60 days to create a tentative Supervisory District plan.

- A Supervisory District plan is created by grouping US Census blocks together [\[Section 59.10\(3\)\(b\)1\]](#)
- Municipalities must create wards entirely within a single Supervisory District.
- Supervisory Districts must be contiguous and "substantially equal in population" [\[Section 59.10\(2\)\(a\)\]](#)
- Multiple plans may be created, but only one final plan can be submitted.

The county board is required to submit a tentative county supervisory district plan to each municipal governing body in the county. The county board is required to hold a public hearing on the tentative plan. If a municipality needs to be divided and placed in more than one supervisory district, the board is to indicate the approximate location of the territory from which a ward is sought and the approximate population of the ward.

Dane County Clerk: Scott Mcdonell, [mcdonell@countyofdane.com](mailto:mcdonell@countyofdane.com), (608) 266-4121  
Total County Population: 561,504  
Maximum Number of Supervisors: 47  
[\[Section 59.10\(3\)\(a\)\]](#)

#### Create New or Load Existing Plan

--New Plan--

Create New Plan

New Plans Remaining: 186

# WISE-LR



- Website:  
<https://wisedecade.legis.wisconsin.gov>
- Tutorial:  
<https://legis.wisconsin.gov/ltsb/local-redistricting/>

## WISE-Decade 2.0 Login Page

The WISE-Decade platform is a suite of mapping tools developed to assist counties and municipalities with legislative and legal requirements mandated by Wisconsin state law.

Login to WISE-Decade

Enter your username and password:

Sign in!

v: 1.0.0.184

Compatible with IE 10+, Firefox 28+, Chrome 33+



Legislative Technology Services Bureau (LTSB) Announcements: