

## French House Business Plan

The French House is open to the public for Wednesday evening dinner during the academic year. (This was not the case from March 2019 to May 2021 due to the pandemic.) We also host occasional receptions in our dining room on Friday afternoons. As a center for French language and culture, we would like to offer wine at our public dinners and receptions to patrons 21 and over.

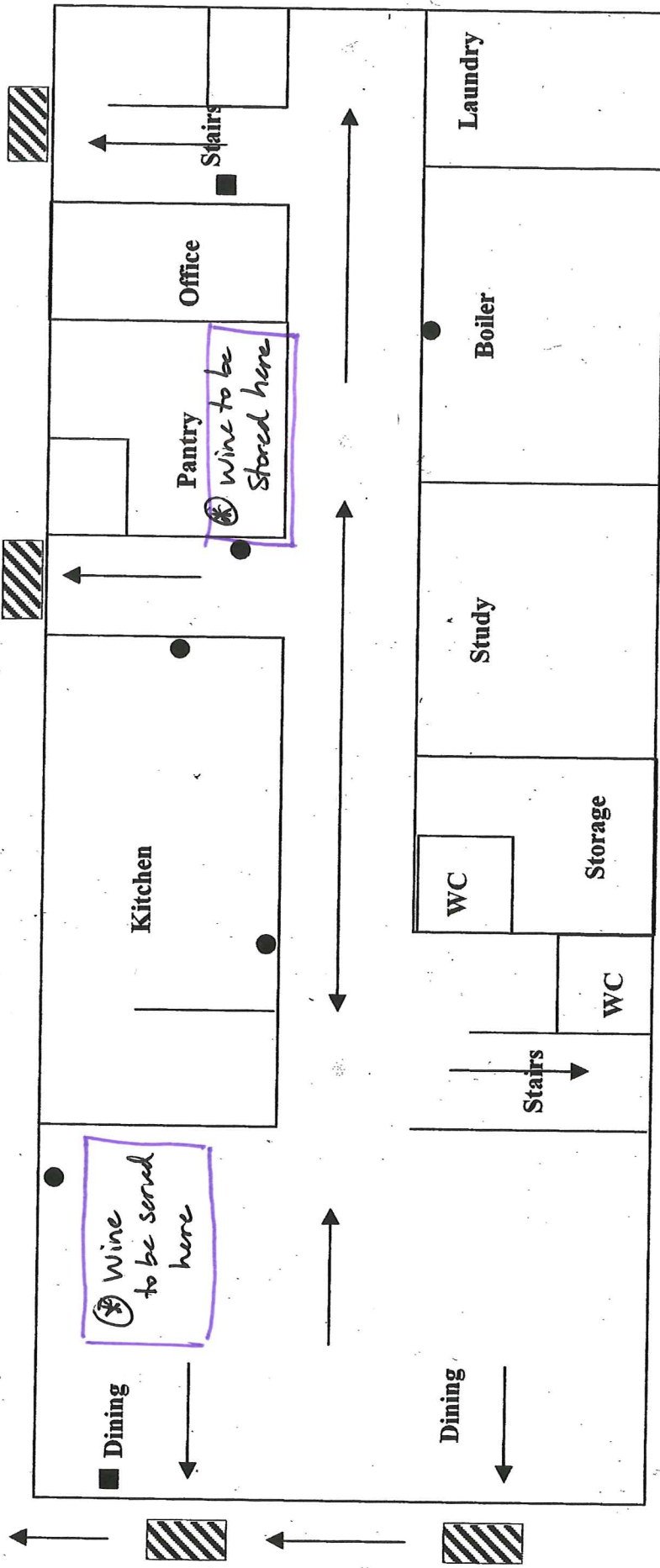
The French House also serves lunch from Monday-Friday and dinner on Mondays, Tuesdays, and Thursdays, but wine will not be served at these times. We are seeking to offer wine only at Wednesday dinners and at occasional receptions.

The current price for dinner is \$11 for non-students (\$9 for students). The menu is determined weekly by the chef and includes a choice between two entrees, salad, and dessert. We plan to charge an extra fee for a glass of wine (to be determined according to wine prices). Our goal is to keep prices accessible. We are a non-profit organization with the purpose of providing opportunities to speak French and learn about French language and culture.

Wine will be served only in the dining room of the French House. It will be stored in the pantry (also called "dry storage") across from the kitchen. White wine will be stored in the walk-in cooler and red wine will be stored on a shelf in the pantry. The pantry is locked whenever the chef is not working, and the area is under surveillance.

# Ground Floor French House Evacuation Floor Plan

Meeting Place: Sidewalk Across Frances Street



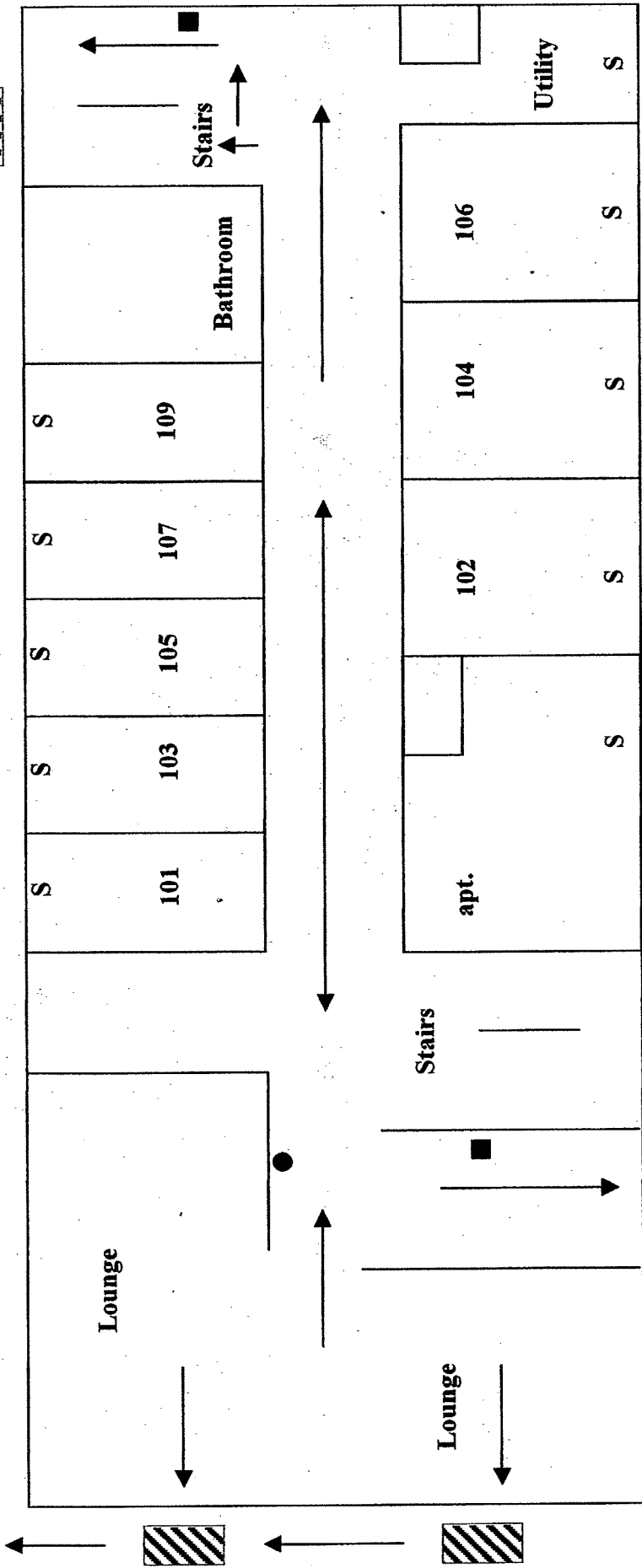
- = Primary Escape Route
- ⋯ = Secondary Escape Route
- S = Smoke Detector
- ▨ = Exit w/Emergency Light
- = Fire Alarm Manual Pull Station
- = Emergency Light
- = Fire Extinguisher

**Emergency Evacuation Plan Summary:**

- When a fire is noticed or the smoke detector sounds, evacuate the building immediately.
  - ✓ Isolate the fire by closing doors.
  - ✓ Activate Fire Alarm System
  - ✓ Evacuate the building.
  - ✓ Call 911
- Evacuate the building using the primary escape route.
- If primary route is unsafe or blocked, use secondary escape route.
- All residents will meet outside, across Frances St., on the sidewalk.
- A head count should be completed by residents and communicated to the fire department upon their arrival.

# 1st Floor French House Evacuation Floor Plan

Meeting Place: Sidewalk Across Frances Street



### Emergency Evacuation Plan Summary:

- When a fire is noticed or the smoke detector sounds, evacuate the building immediately.
  - Isolate the fire by closing doors.
  - Activate Fire Alarm System
  - Evacuate the building.
  - Call 911
- Evacuate the building using the primary escape route.
- If primary route is unsafe or blocked, use secondary escape route.
- All residents will meet outside, across Frances St., on the sidewalk.
- A head count should be completed by residents and communicated to the fire department upon their arrival.

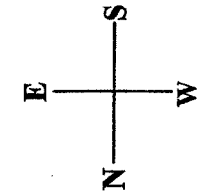
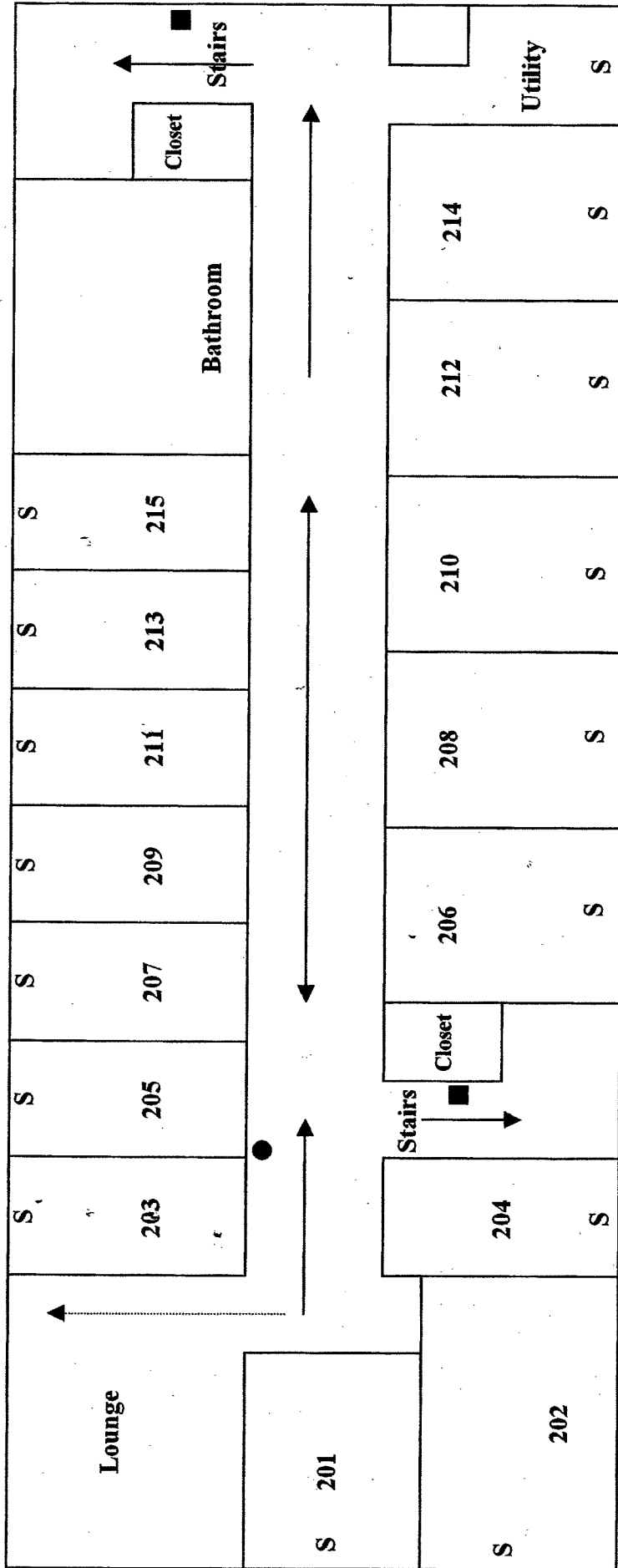
- ← = Primary Escape Route
- ⋯ = Secondary Escape Route
- S = Smoke Detector
- ▨ = Exit w/Emergency Light
- = Fire Alarm Manual Pull Station
- = Emergency Light
- = Fire Extinguisher

# 2<sup>nd</sup> Floor French House Evacuation Floor Plan

Emergency Exit

Fire Escape

Meeting Place: Sidewalk Across the Street



- ← = Primary Escape Route
- ⋯ = Secondary Escape Route
- S = Smoke Detector
- ▨ = Exit w/Emergency Light
- = Fire Alarm Manual Pull Station
- = Emergency Light
- = Fire Extinguisher

## Emergency Evacuation Plan Summary:

- When a fire is noticed or the smoke detector sounds, evacuate the building immediately.
  - Isolate the fire by closing doors.
  - Activate Fire Alarm System
  - Evacuate the building.
  - Call 911
- Evacuate the building using the primary escape route.
- If primary route is unsafe or blocked, use secondary escape route.
- All residents will meet outside, across Frances St., on the sidewalk.
- A head count should be completed by residents and communicated to the fire department upon their arrival.