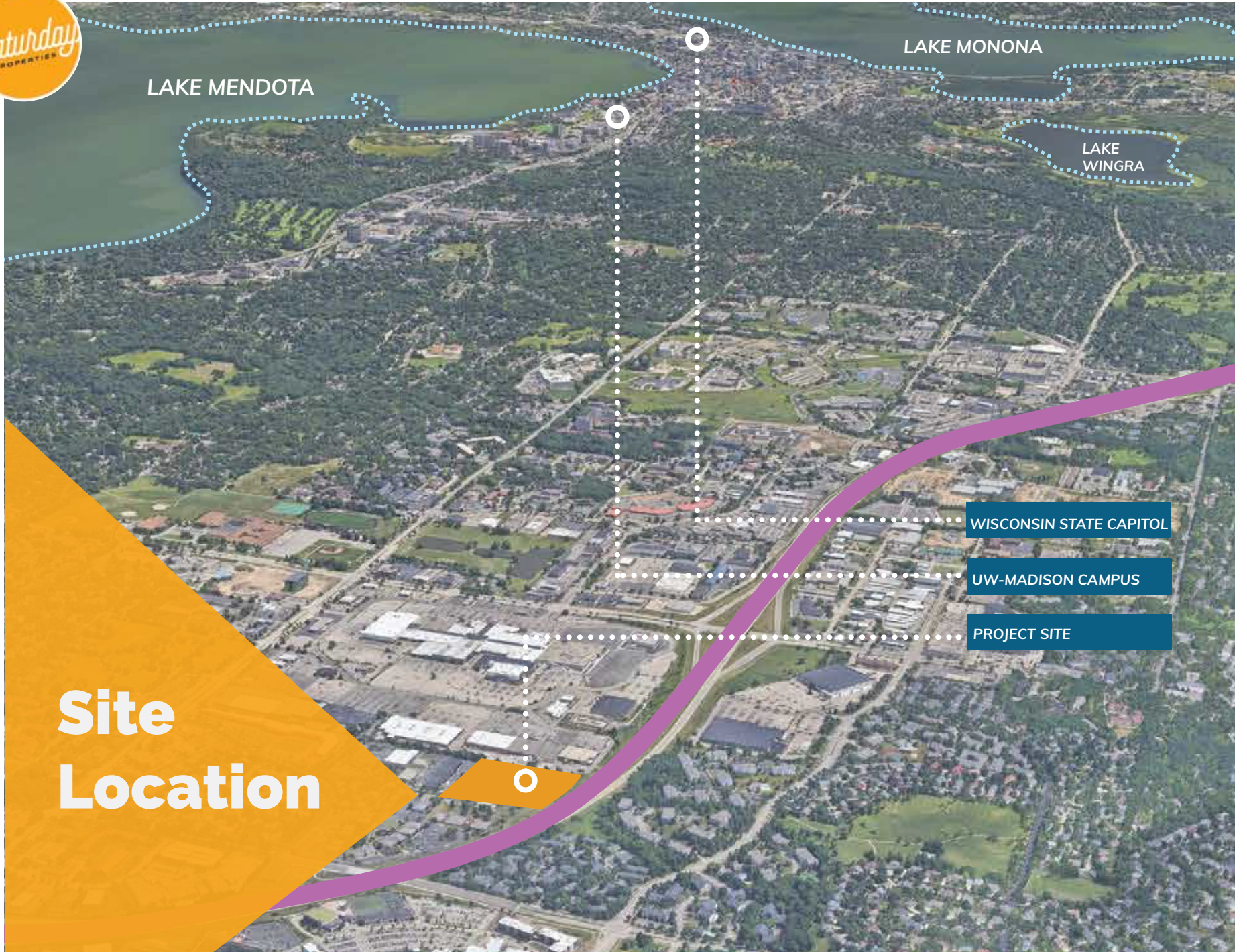




# ZOR SHRINE Development





LAKE MENDOTA

LAKE MONONA

LAKE WINGRA

WISCONSIN STATE CAPITOL

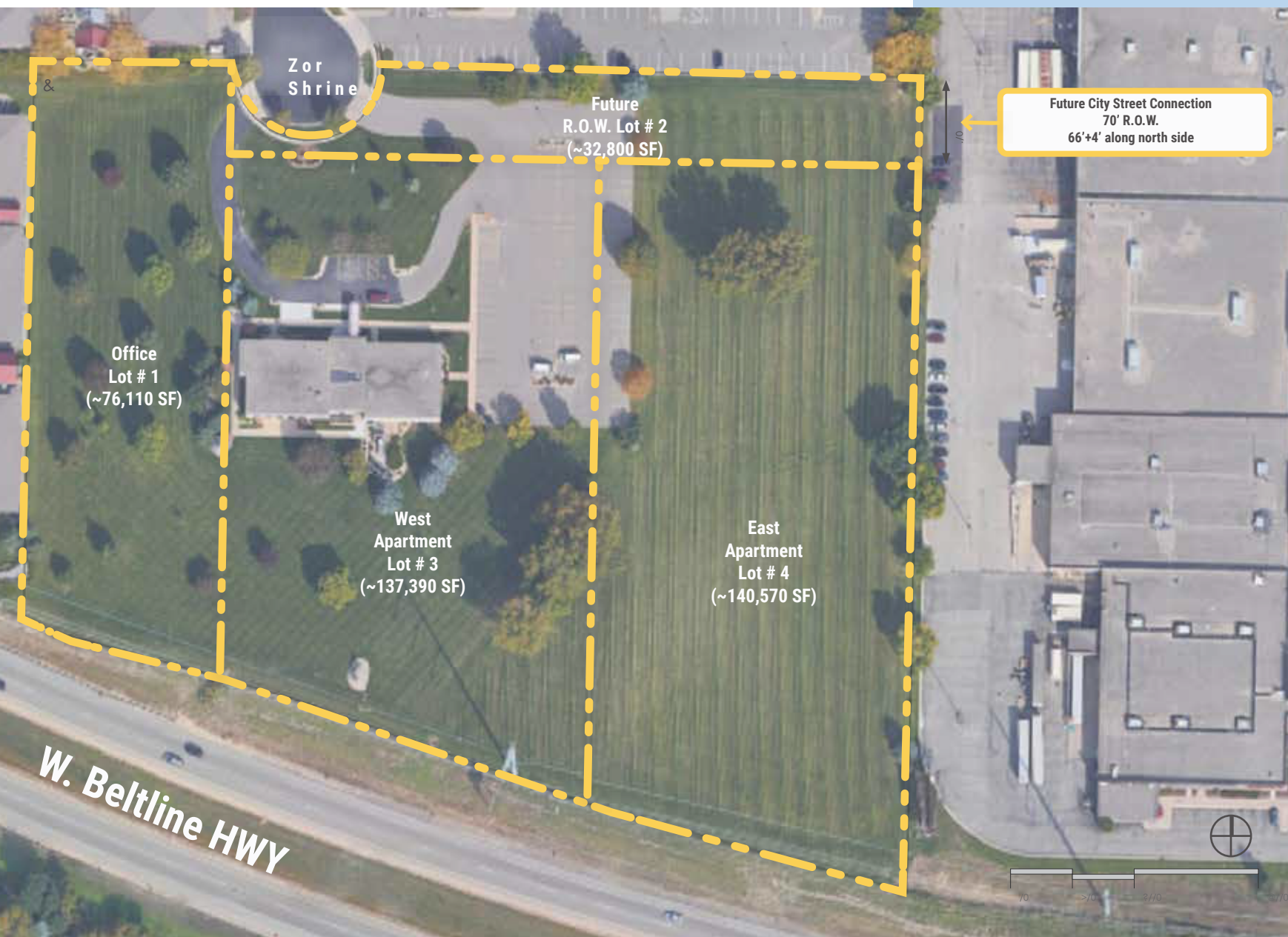
UW-MADISON CAMPUS

PROJECT SITE

# Site Location



# Current Site Layout

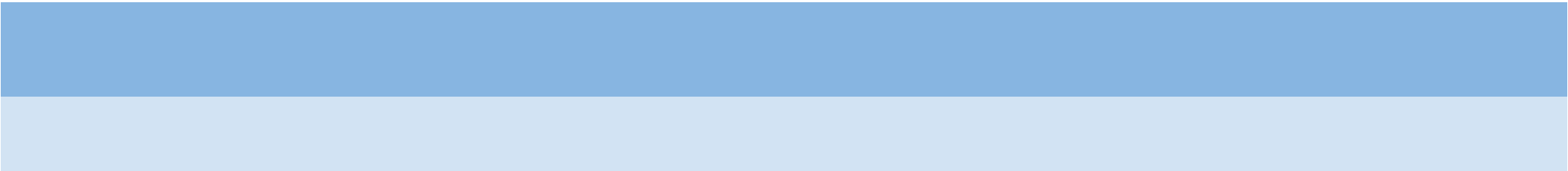


# Renderings



# Renderings





**FIBER CEMENT BOARD AND BATTEN SIDING**



**FIBER CEMENT LAP SIDING**



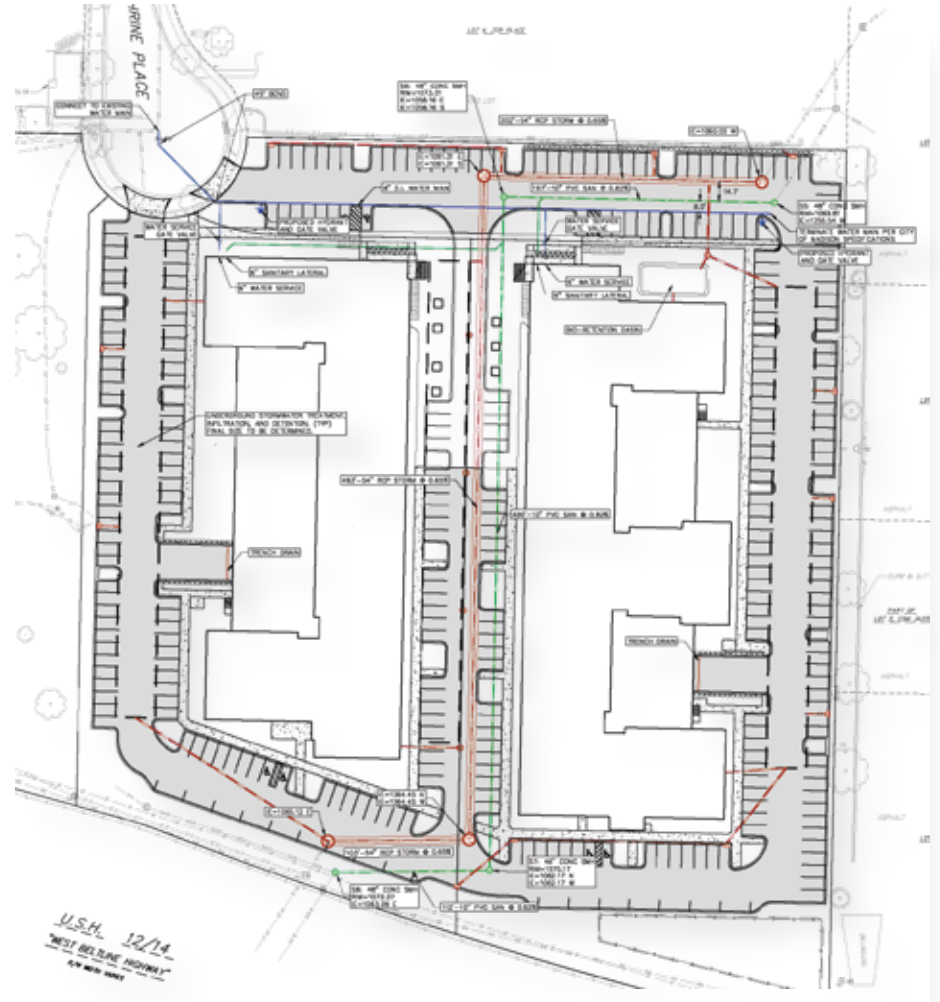
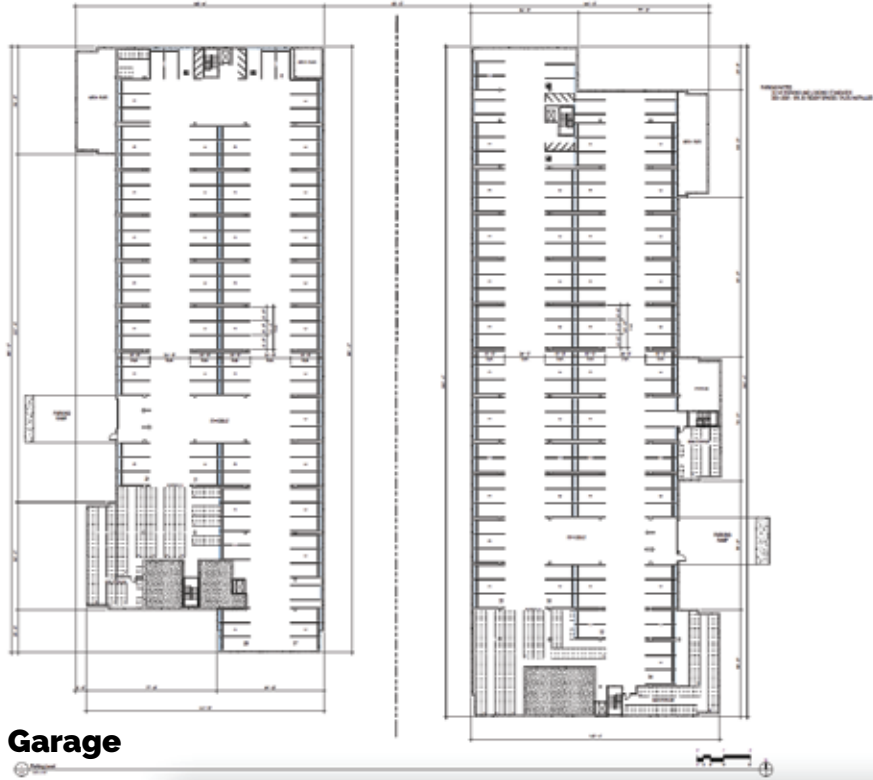
**ROCK FACE CEMENT MASONRY BASE**



**FIBER CEMENT CEDAR-LOOK PLANK SIDING**



# Site Plan



# Property Layout - First Floor



**Typical Units Area**

Unit Type	Area
Studio Unit	480 SF
1 Bedroom Unit	650 SF
2 Bedroom Unit	850 SF
3 Bedroom Unit	1,150 SF

**Room Matrix - West Building**

Room	101	102	103	104	105	106	107	108	109	110	111	112	113	114	115	116	117	118	119	120
Bedroom																				
Bathroom																				
Kitchen																				
Living																				
Unit Area																				

**Room Matrix - East Building**

Room	201	202	203	204	205	206	207	208	209	210	211	212	213	214	215	216	217	218	219	220
Bedroom																				
Bathroom																				
Kitchen																				
Living																				
Unit Area																				





## West Signage



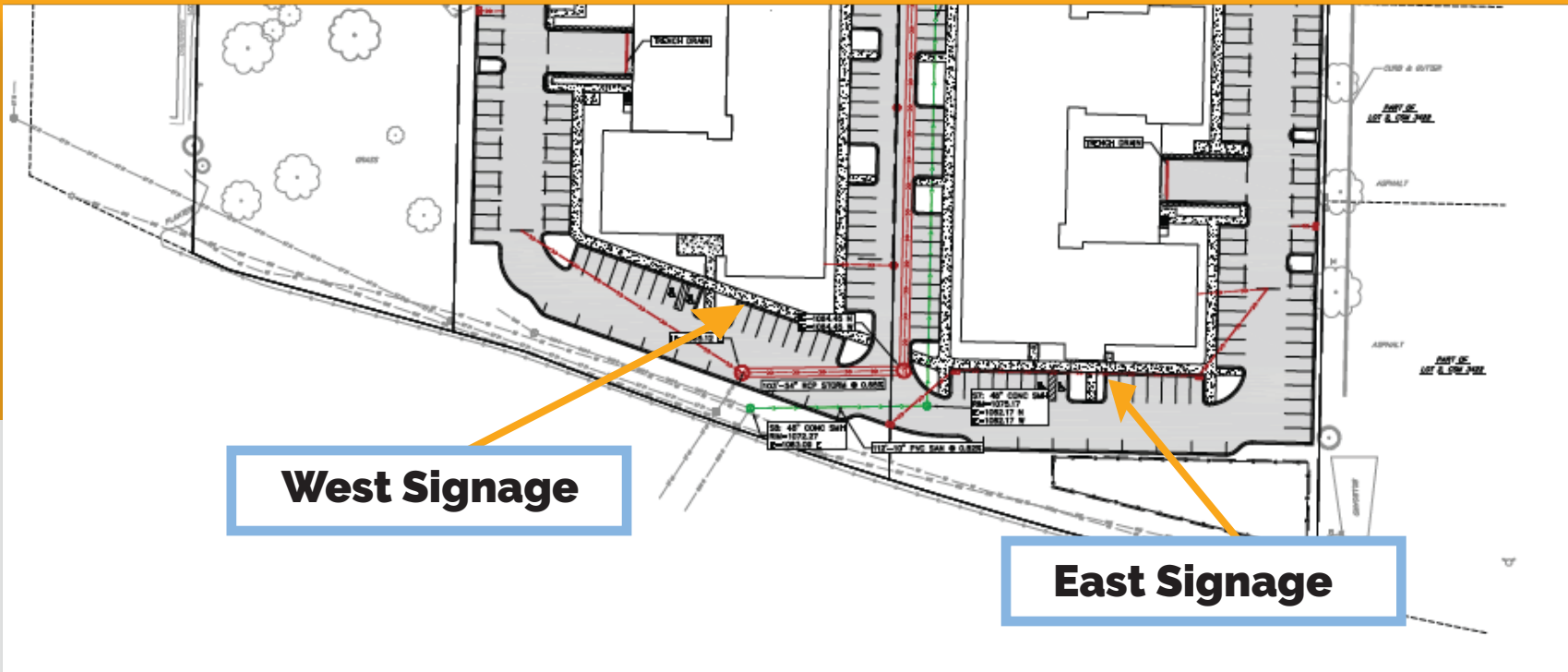
## East Signage



# Signage

## West Signage

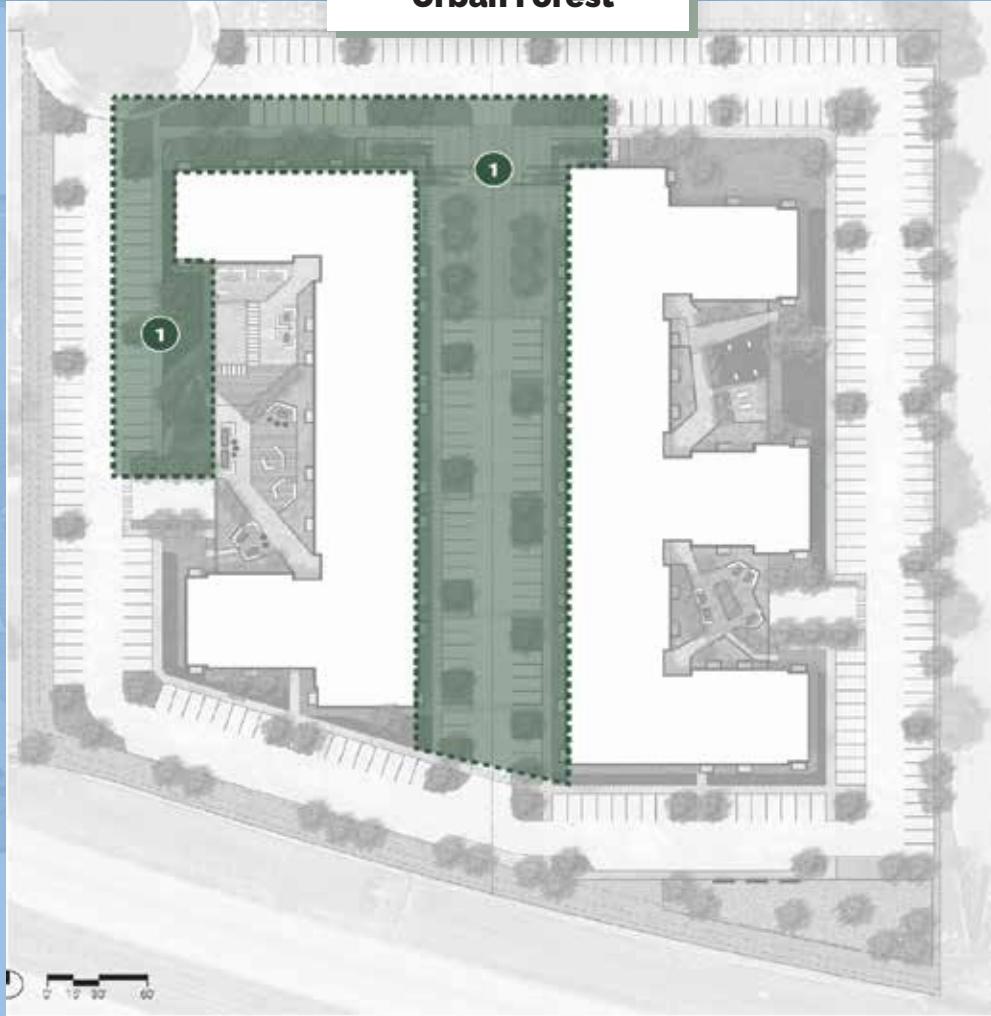
## East Signage



**Beabalm**



**Urban Forest**



**Whitespire Birch**



**Quaking Aspen**



**Sem Ash Leaf Spirea**



**Autumn Brilliance Serviceberry**



**Lady In Red Fern**



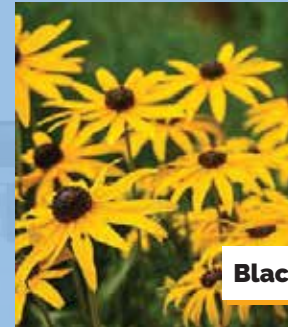
**Kobold Liatris**



**Japanese Forest Grass**



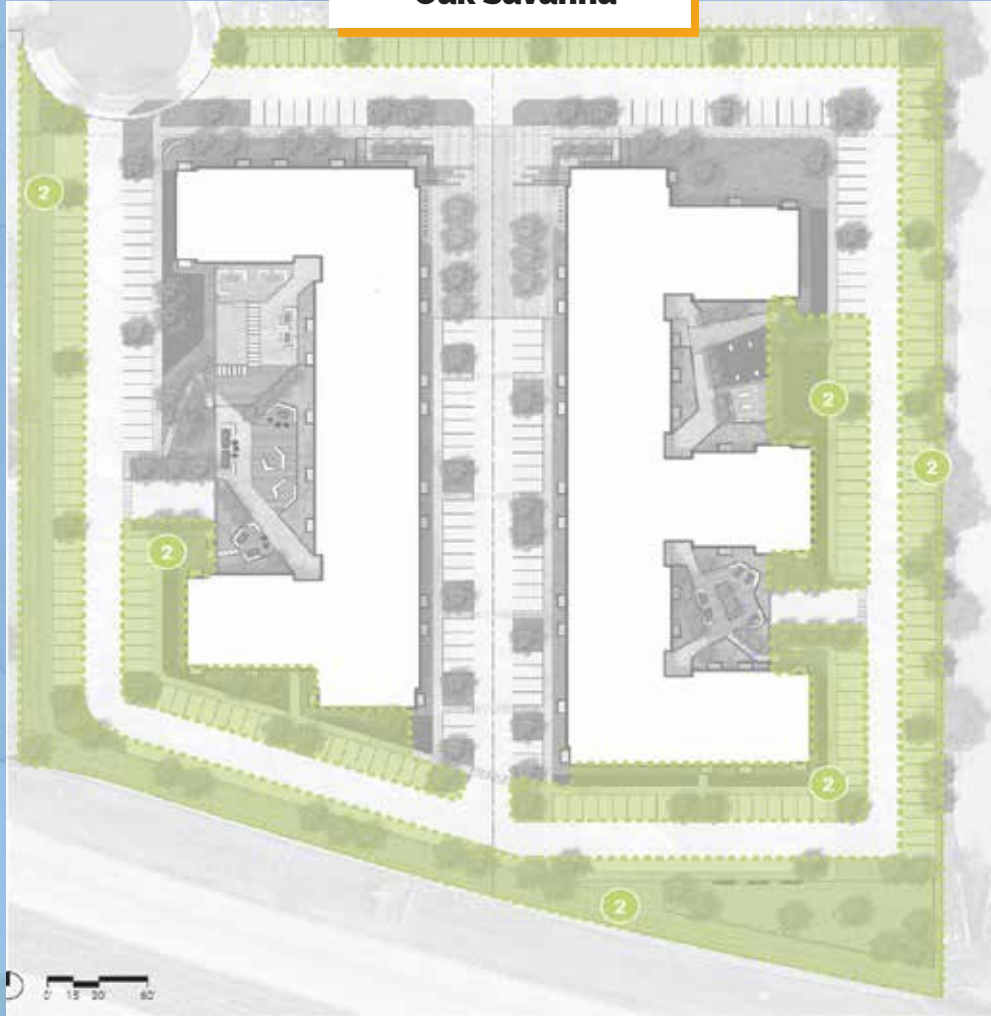
**Black Eyed Susan**



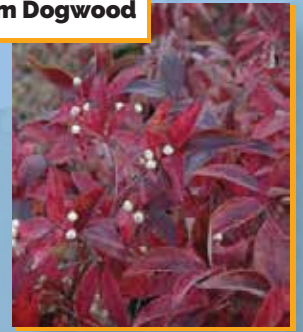
**Bur Oak**



**Oak Savanna**



**Muskingum Dogwood**



**Northern Pin Oak**



**Butterfly Milkweed**



**Accolade Elm**



**Little Bluestem**



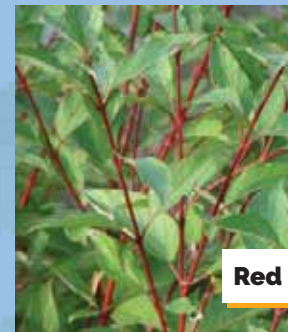
**Switchgrass**



**Purple Coneflower**



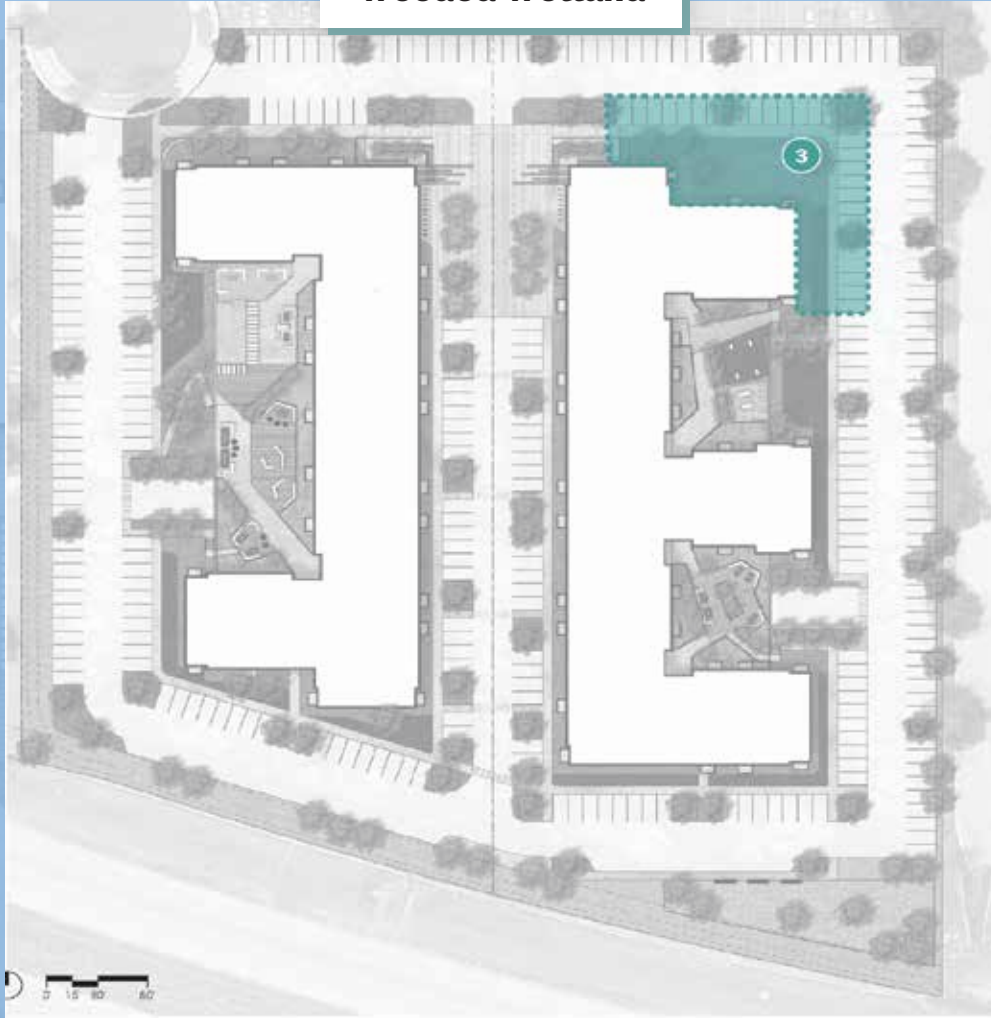
**Red Osier Dogwood**



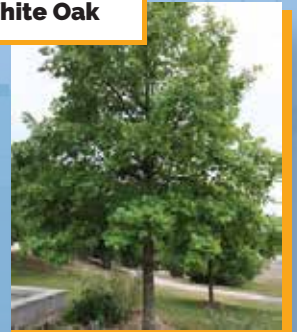
**Royal Fern**



**Wooded Wetland**



**Swamp White Oak**



**Nannyberry**



**River Birch**



**Black Chokeberry**



**Cardinal Flower**



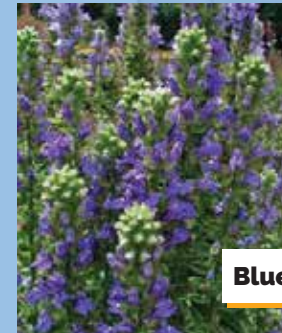
**New England Aster**



**Canada Blue-Joint Grass**



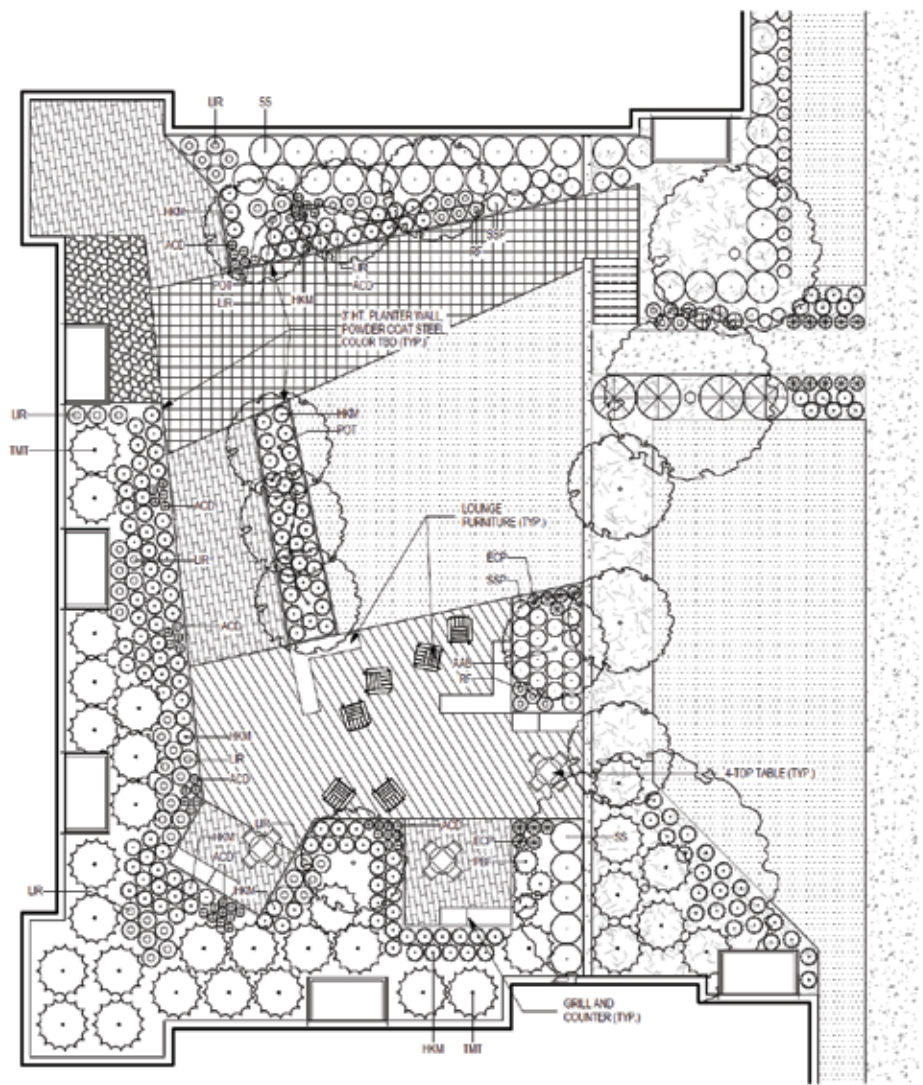
**Blue Lobelia**





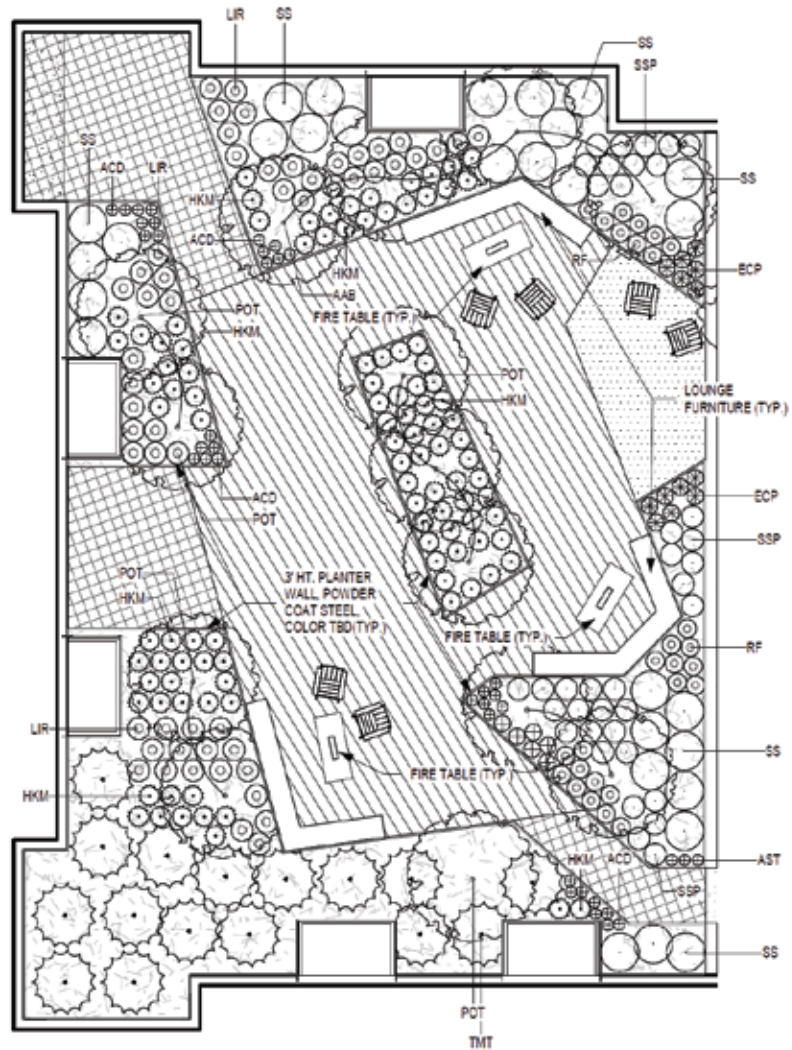


# Amenity Deck - 2





# Amenity Deck - 3







*Thank you*

**38,000 cars per day  
off 55 (2016)** \*Hello Apartments



**95,000 cars per day  
off 169 (2019)** \*Hello Apartments








**55,600 cars per day  
off Hwy 12/W Beltine Hwy**





ID #	Species	Size (DBH)
1	Sugar Maple	20
2	Green Ash	10
3	Sugar Maple	16
4	Green Ash	19
5	Norway Maple	4
6	Spruce	10
7	Spruce	12
8	American Linden	20
9	Sugar Maple	18
10	Green Ash	17
11	White Birch	4
12	White Birch	4
13	White Birch	4
14	American Linden	17
15	Green Ash	19
16	Pine	16
17	Pine	16
18	Pine	19
19	Spruce	10
20	Spruce	12
21	Spruce	11
22	Pine	14
23	Red Maple	14
24	Red Maple	6
25	Norway Maple	13
26	Norway Maple	13
27	Green Ash	20
28	Red Maple	18
29	Spruce	20
30	Red Maple	7
31	Spruce	18
32	Spruce	16
33	Cottonwood	31
34	Box Elder	19
35	Cottonwood	30
36	Cottonwood	21
37	Cottonwood	9
38	Cottonwood	7
39	Cottonwood	29
40	Cottonwood	27
41	Box Elder	21
42	Crabapple	12
43	Green Ash	18
44	Red Maple	17
45	Crabapple	Dead
46	American Linden	10
47	American Linden	20
48	Cottonwood	30
49	Cottonwood	23
50	Cottonwood	28
51	Sugar Maple	32
52	Spruce	18
53	Red Oak	28
54	Honey Locust	4
55	Spruce	5
56	Norway Maple	14
57	Spruce	8
58	Spruce	10
59	Norway Maple	4
60	Crabapple	6
61	Honey Locust	18
62	Crabapple	2
63	Crabapple	1
64	Yew	2
65	Yew	2
66	Crabapple	Dead

# Site Lighting

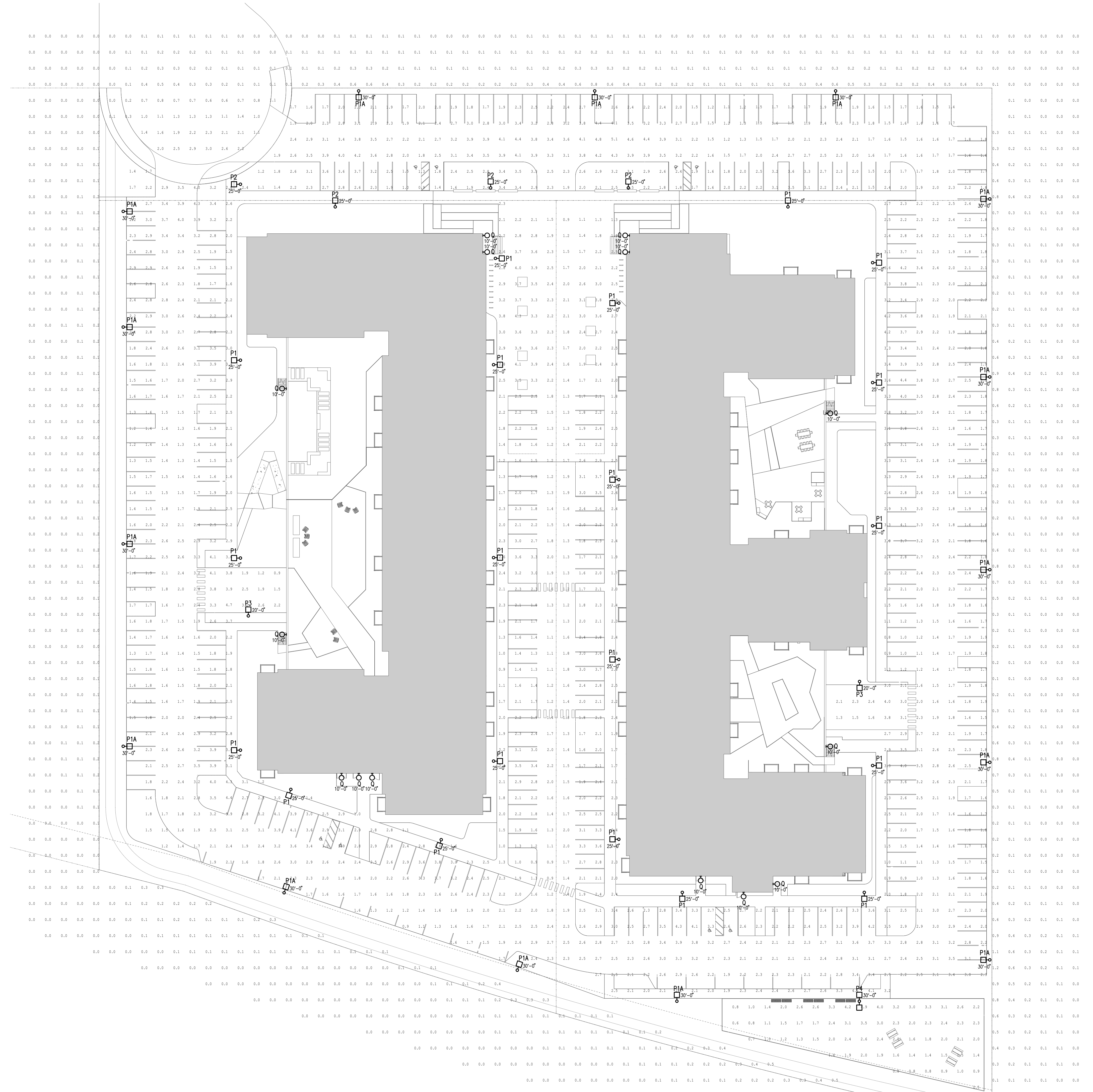
-  Parking Lighting
-  Light Bollard
-  Landscape Lighting
-  LED Strip Lighting
-  Catenary Lighting



## GENERAL NOTES

- A. LIGHTING LEVELS SHOWN ARE MAINTAINED. LIGHT LOSS FACTOR OF .855 WAS USED TO ACCOUNT FOR DIRT AND LUMEN DEPRECIATION.
- B. FIXTURES SHALL BE CONTROLLED BY A COMBINATION OF PHOTOCELL AND TIMECLOCK.

CALCULATOR SUMMARY						
TYPE	CALC TYPE	UNITS	AVG	MIN	MAX	MIN/MAX
100' PARK	ILLUMINANCE	FC	1.96	4.9	3.52	9.85
DRIVING WAY	ILLUMINANCE	FC	2.31	5.1	5.8	7.39
SITE BOUNDARIES	ILLUMINANCE	FC	6.13	3.0	6.0	N/A



**1 PHOTOMETRIC SITE PLAN**  
1" = 30'-0"

201 Main Street SE | Suite 325 | Minneapolis | MN 55414  
cunningham.com



Emanuelson-Podas, Inc.  
7705 Bush Lake Road  
Edina, MN 55439  
952.930.0050 | www.epinc.com



3546 Dakota Ave S  
Suite D  
St. Louis Park, MN 55416

**PRELIMINARY  
NOT FOR CONSTRUCTION**

Revisions		
No.	Date	Description

Project Information	
Phase:	Date: 05/05/2021
Project No.: 4506.0000	PIC / A/C:

Sheet Title  
**Photometric  
Site Plan**

Sheet Number \_\_\_\_\_ Current Revision \_\_\_\_\_

**E-1**

201 Main Street SE | Suite 325 | Minneapolis | MN 55414  
cunningham.com

**emanuelson-podas**  
consulting engineers

Emanuelson-Podas, Inc.  
7705 Bush Lake Road  
Edina, MN 55439

952.930.0050 | www.epinc.com



3546 Dakota Ave S  
Suite D  
St. Louis Park, MN 55416

**PRELIMINARY  
NOT FOR CONSTRUCTION**

Revisions	No.	Date	Description

Project Information	Date:	05/05/2021
Phase:	4506.0000	PIC / A.C.

Sheet Title  
**Photometric  
Cutsheets**

Sheet Number **E-2** Current Revision

### MR1 LED LED Area Luminaire

**Specifications**  
EPA: 0.54 ft<sup>2</sup> (0.05 m<sup>2</sup>)  
Length: 24.1/2" (612 mm)  
Width: 18.5/8" (473 mm)  
Height: 6.3/8" (162 mm)  
Weight (max): 31 lbs (14 kg)

**Ordering Information**  
EXAMPLE: MR1 LED 42C 700 40K SRS MVOLT SPA DOBDB

Series	LEDs	Driver Current	Color Temperature	Distribution	Voltage	Mounting
MR1LED	42C 42 LEDs (bare chip)	350 350mA	30K 3000K	S82 Type I	S84 Type IV	MVOLT SPA Square pole mounting
		700 700mA	40K 4000K	S83 Type II	S85 Type V	SPA Round pole mounting
		700 700mA	50K 5000K			WBA Wall bracket

**Performance Data**  
Lumen Output table with columns for Lm, Type, Temp, and various beam angles.

**Photometric Diagrams**  
Beam spread diagrams for 0.54 ft², 0.5 ft², and 1.0 ft² beam areas.

**Features & Specifications**  
INTENDED USE: Ideal for parking areas, street lighting, walkways and canopies.  
CONSTRUCTION: Extruded polystyrene aluminum housing with nominal wall thickness of .012".  
FINISH: Exterior parts are protected by a zinc-inhibited Super-Durable 100% Fluoropolymer powder coat finish.ELECTRICAL: Light engine consists of 42 high-efficiency LEDs mounted to a metal core circuit board.WARRANTY: 5-year limited warranty. Complete warranty terms located at [www.lithonia.com/warranty](#).

### MR1 LED LED Area Luminaire

**Specifications**  
EPA: 0.54 ft<sup>2</sup> (0.05 m<sup>2</sup>)  
Length: 24.1/2" (612 mm)  
Width: 18.5/8" (473 mm)  
Height: 6.3/8" (162 mm)  
Weight (max): 31 lbs (14 kg)

**Ordering Information**  
EXAMPLE: MR1 LED 42C 700 40K SRS MVOLT SPA DOBDB

Series	LEDs	Driver Current	Color Temperature	Distribution	Voltage	Mounting
MR1LED	42C 42 LEDs (bare chip)	350 350mA	30K 3000K	S82 Type I	S84 Type IV	SPA Square pole mounting
		700 700mA	40K 4000K	S83 Type II	S85 Type V	SPA Round pole mounting
		700 700mA	50K 5000K			WBA Wall bracket

**Performance Data**  
Lumen Output table with columns for Lm, Type, Temp, and various beam angles.

**Photometric Diagrams**  
Beam spread diagrams for 0.54 ft², 0.5 ft², and 1.0 ft² beam areas.

**Features & Specifications**  
INTENDED USE: Ideal for parking areas, street lighting, walkways and canopies.  
CONSTRUCTION: Extruded polystyrene aluminum housing with nominal wall thickness of .012".  
FINISH: Exterior parts are protected by a zinc-inhibited Super-Durable 100% Fluoropolymer powder coat finish.  
ELECTRICAL: Light engine consists of 42 high-efficiency LEDs mounted to a metal core circuit board.  
WARRANTY: 5-year limited warranty. Complete warranty terms located at [www.lithonia.com/warranty](#).

### MR2 LED LED Area Luminaire

**Specifications**  
EPA: 0.9 ft<sup>2</sup> (0.08 m<sup>2</sup>)  
Length: 32.7/8" (833 mm)  
Width: 25" (635 mm)  
Height: 8.1/4" (206 mm)  
Weight (max): 42 lbs (19 kg)

**Ordering Information**  
EXAMPLE: MR2 LED 60C 1000 40K TSM MVOLT SPA DOBDB

Series	LEDs	Driver Current	Color Temperature	Distribution	Voltage	Mounting
MR2LED	60C 60 LEDs	700 700mA	40K 4000K	TSM Type I	MVOLT SPA	Square pole mounting
		1000 1000mA	50K 5000K	TSM Type II	TSM Type III	Round pole mounting
				TSM Type IV	TSM Type V	Wall bracket

**Performance Data**  
Lumen Output table with columns for Lm, Type, Temp, and various beam angles.

**Photometric Diagrams**  
Beam spread diagrams for 0.9 ft², 0.5 ft², and 1.0 ft² beam areas.

**Features & Specifications**  
INTENDED USE: Ideal for parking areas, street lighting, walkways and canopies.  
CONSTRUCTION: Extruded polystyrene aluminum housing with nominal wall thickness of .012".  
FINISH: Exterior parts are protected by a zinc-inhibited Super-Durable 100% Fluoropolymer powder coat finish.  
ELECTRICAL: Light engine consists of 60 high-efficiency LEDs mounted to a metal core circuit board.  
WARRANTY: 5-year limited warranty. Complete warranty terms located at [www.lithonia.com/warranty](#).

### MR2 LED LED Area Luminaire

**Specifications**  
EPA: 0.9 ft<sup>2</sup> (0.08 m<sup>2</sup>)  
Length: 32.7/8" (833 mm)  
Width: 25" (635 mm)  
Height: 8.1/4" (206 mm)  
Weight (max): 42 lbs (19 kg)

**Ordering Information**  
EXAMPLE: MR2 LED 60C 1000 40K TSM MVOLT SPA DOBDB

Series	LEDs	Driver Current	Color Temperature	Distribution	Voltage	Mounting
MR2LED	60C 60 LEDs	700 700mA	40K 4000K	TSM Type I	MVOLT SPA	Square pole mounting
		1000 1000mA	50K 5000K	TSM Type II	TSM Type III	Round pole mounting
				TSM Type IV	TSM Type V	Wall bracket

**Performance Data**  
Lumen Output table with columns for Lm, Type, Temp, and various beam angles.

**Photometric Diagrams**  
Beam spread diagrams for 0.9 ft², 0.5 ft², and 1.0 ft² beam areas.

**Features & Specifications**  
INTENDED USE: Ideal for parking areas, street lighting, walkways and canopies.  
CONSTRUCTION: Extruded polystyrene aluminum housing with nominal wall thickness of .012".  
FINISH: Exterior parts are protected by a zinc-inhibited Super-Durable 100% Fluoropolymer powder coat finish.  
ELECTRICAL: Light engine consists of 60 high-efficiency LEDs mounted to a metal core circuit board.  
WARRANTY: 5-year limited warranty. Complete warranty terms located at [www.lithonia.com/warranty](#).

### MR2 LED LED Area Luminaire

**Specifications**  
EPA: 0.9 ft<sup>2</sup> (0.08 m<sup>2</sup>)  
Length: 32.7/8" (833 mm)  
Width: 25" (635 mm)  
Height: 8.1/4" (206 mm)  
Weight (max): 42 lbs (19 kg)

**Ordering Information**  
EXAMPLE: MR2 LED 60C 1000 40K TSM MVOLT SPA DOBDB

Series	LEDs	Driver Current	Color Temperature	Distribution	Voltage	Mounting
MR2LED	60C 60 LEDs	700 700mA	40K 4000K	TSM Type I	MVOLT SPA	Square pole mounting
		1000 1000mA	50K 5000K	TSM Type II	TSM Type III	Round pole mounting
				TSM Type IV	TSM Type V	Wall bracket

**Performance Data**  
Lumen Output table with columns for Lm, Type, Temp, and various beam angles.

**Photometric Diagrams**  
Beam spread diagrams for 0.9 ft², 0.5 ft², and 1.0 ft² beam areas.

**Features & Specifications**  
INTENDED USE: Ideal for parking areas, street lighting, walkways and canopies.  
CONSTRUCTION: Extruded polystyrene aluminum housing with nominal wall thickness of .012".  
FINISH: Exterior parts are protected by a zinc-inhibited Super-Durable 100% Fluoropolymer powder coat finish.  
ELECTRICAL: Light engine consists of 60 high-efficiency LEDs mounted to a metal core circuit board.  
WARRANTY: 5-year limited warranty. Complete warranty terms located at [www.lithonia.com/warranty](#).

### MR1 LED LED Area Luminaire

**Specifications**  
EPA: 0.54 ft<sup>2</sup> (0.05 m<sup>2</sup>)  
Length: 24.1/2" (612 mm)  
Width: 18.5/8" (473 mm)  
Height: 6.3/8" (162 mm)  
Weight (max): 31 lbs (14 kg)

**Ordering Information**  
EXAMPLE: MR1 LED 42C 700 40K SRS MVOLT SPA DOBDB

Series	LEDs	Driver Current	Color Temperature	Distribution	Voltage	Mounting
MR1LED	42C 42 LEDs (bare chip)	350 350mA	30K 3000K	S82 Type I	S84 Type IV	SPA Square pole mounting
		700 700mA	40K 4000K	S83 Type II	S85 Type V	SPA Round pole mounting
		700 700mA	50K 5000K			WBA Wall bracket

**Performance Data**  
Lumen Output table with columns for Lm, Type, Temp, and various beam angles.

**Photometric Diagrams**  
Beam spread diagrams for 0.54 ft², 0.5 ft², and 1.0 ft² beam areas.

**Features & Specifications**  
INTENDED USE: Ideal for parking areas, street lighting, walkways and canopies.  
CONSTRUCTION: Extruded polystyrene aluminum housing with nominal wall thickness of .012".  
FINISH: Exterior parts are protected by a zinc-inhibited Super-Durable 100% Fluoropolymer powder coat finish.  
ELECTRICAL: Light engine consists of 42 high-efficiency LEDs mounted to a metal core circuit board.  
WARRANTY: 5-year limited warranty. Complete warranty terms located at [www.lithonia.com/warranty](#).

## FIXTURES TYPE P1, P1A, P2, P4

## FIXTURES TYPE P3



**emanuelson-podas**  
consulting engineers

Emanuelson-Podas, Inc.  
7705 Bush Lake Road  
Edina, MN 55439

952.930.0050 | www.epinc.com



3546 Dakota Ave S  
Suite D  
St. Louis Park, MN 55416

**PRELIMINARY**  
**NOT FOR CONSTRUCTION**

Revisions		
No.	Date	Description

Project Information		
Phase:	Date:	
	05/05/2021	
Project No.:	PIC / A/C:	
4506.0000		

Sheet Title  
**Photometric**  
**Cutsheets and**  
**Fixture Schedule**

Sheet Number Current Revision

**E-3**



Catalog Number
Notes
Type

### FEATURES & SPECIFICATIONS

**INTENDED USE**  
Provides years of maintenance-free illumination for outdoor use in residential & commercial applications. Ideal for applications such as lighting walkways and stairways for safety and security.

**CONSTRUCTION**  
Cast aluminum housing with corrosion-resistant paint in either dark bronze or white finish. ADA compliant.

**OPTICS**  
4000K CCT LEDs.  
Polycarbonate lens protects the LED from moisture, dirt and other contaminants.

**LOWER MAINTENANCE:** The LED will deliver 70% of its initial lumens at 50,000 hour average LED life. See Lighted Facts label on page 2 for performance details.

**ELECTRICAL**  
MVOLT driven operates on any line voltage from 120-277V.  
Operating temperature: 30 °C to 40 °C.  
WV surge protection standard.

**INSTALLATION**  
Surface mounts to universal junction box (provided by others).

**LISTINGS**  
UL Listed to U.S. and Canadian safety standards for wet locations.  
Tested in accordance with IESNA LM-79 and LM-80 standards.

**WARRANTY** — 5-year limited warranty. Complete warranty terms located at: [www.lithonia.com/customer-service/customer-support/terms-and-conditions](http://www.lithonia.com/customer-service/customer-support/terms-and-conditions)

**Note:** Actual performance may differ as a result of end-user environment and application. All values are design or typical values, measured under laboratory conditions at 21 °C. Specifications subject to change without notice.



**Outdoor General Purpose**  
**OLLWD & OLLWU**  
LED WALL CYLINDER LIGHT



**Specifications**  
All dimensions are inches (centimeters)



ORDERING INFORMATION				
For shortest lead times, configure products using bolded options.				
Series	Performance Package	Color temperature (CCT)	Voltage	Finish
<b>OLLWD LED</b> Downlight	<b>P1</b>	<b>40K</b> 4000K	<b>MVOLT</b> 120V-277V	<b>DOB</b> Dark Bronze
<b>OLLWU LED</b> Up & downlight			<b>120V</b> 120V	<b>WH</b> White

**Example:** OLLWD LED P1 40K MVOLT DOB

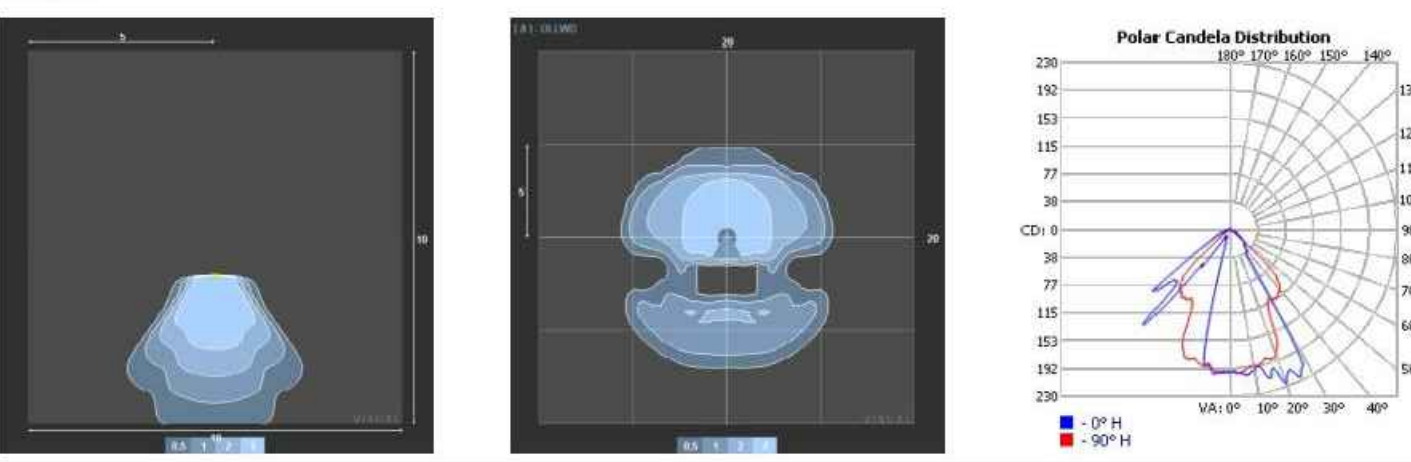
**Notes:**  
1. Only available with OLLWD and a DOB.  
2. Only available with OLLWU.

DECORATIVE, INDOOR & OUTDOOR OLLWD-OLLWU

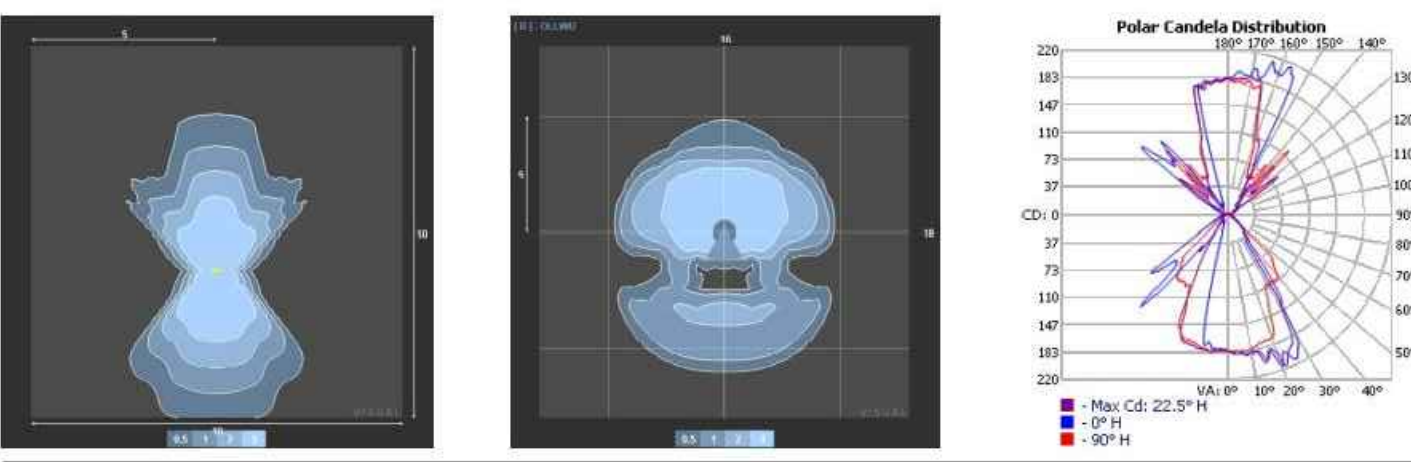
### OLLWD & OLLWU LED Wall Cylinder Light

**PHOTOMETRICS**  
To see complete photometric reports or download .ies files for this product, visit Lithonia Lighting's Outdoor LED homepage. Tested in accordance with IESNA LM-79 and LM-80 standards.

**OLLWD**



**OLLWU**



**OLLWD lighting facts**

Light Output (Lumens)	52.1
Watts	8.1
Lumens per Watt (lm/Watt)	64.45
Color Accuracy	70

**Light Color** 4000 (Bright White)

**OLLWU lighting facts**

Light Output (Lumens)	84.7
Watts	14
Lumens per Watt (lm/Watt)	67.64
Color Accuracy	70

**Light Color** 4000 (Bright White)

© 2013-2020 Acuity Brands Lighting, Inc. All rights reserved. Rev. 02/17/20

## FIXTURE TYPE Q

LIGHT FIXTURE SCHEDULE								
TYPE	DESCRIPTION	VOLT	LAMP TYPE	QTY / FIXT.	VA / FIXT.	MANUFACTURER	CATALOG NUMBER	NOTES
P1	EXTERIOR LIGHT POLE AND SINGLE ARM MOUNT HEAD, DIE-CAST ALUMINUM FIXTURE HOUSING, ACRYLIC LENS. 4" STRAIGHT SQUARE STEEL POLE WITH BASE COVER. FIXTURE AND POLE TO BE DARK BRONZE FINISH. HOUSE SIDE SHIELD. HEAD TO BE 25' ABOVE GRADE.	UNIV	LED 4000K	N/A	132	LITHONIA	MR2 LED 60C 700 40K T2M MVOLT SPA HS DDBXD	1
P1A	EXTERIOR LIGHT POLE AND SINGLE ARM MOUNT HEAD, DIE-CAST ALUMINUM FIXTURE HOUSING, ACRYLIC LENS. 4" STRAIGHT SQUARE STEEL POLE WITH BASE COVER. FIXTURE AND POLE TO BE DARK BRONZE FINISH. HOUSE SIDE SHIELD. HEAD TO BE 30' ABOVE GRADE.	UNIV	LED 4000K	N/A	132	LITHONIA	MR2 LED 60C 700 40K T2M MVOLT SPA HS DDBXD	1
P2	EXTERIOR LIGHT POLE AND SINGLE ARM MOUNT HEAD, DIE-CAST ALUMINUM FIXTURE HOUSING, ACRYLIC LENS. 4" STRAIGHT SQUARE STEEL POLE WITH BASE COVER. FIXTURE AND POLE TO BE DARK BRONZE FINISH. HOUSE SIDE SHIELD. HEAD TO BE 25' ABOVE GRADE.	UNIV	LED 4000K	N/A	132	LITHONIA	MR2 LED 60C 700 40K T2M MVOLT SPA HS DDBXD	1
P3	EXTERIOR LIGHT POLE AND SINGLE ARM MOUNT HEAD, DIE-CAST ALUMINUM FIXTURE HOUSING, ACRYLIC LENS. 4" STRAIGHT SQUARE STEEL POLE WITH BASE COVER. FIXTURE AND POLE TO BE DARK BRONZE FINISH. HEAD TO BE 20' ABOVE GRADE.	UNIV	LED 4000K	N/A	VARIES	LITHONIA	MR1 LED 42C 350 40K SR4 MVOLT SPA DDBXD	1
P4	EXTERIOR LIGHT POLE AND BACK TO BACK ARM MOUNT HEADS, DIE-CAST ALUMINUM FIXTURE HOUSING, ACRYLIC LENS. 4" STRAIGHT SQUARE STEEL POLE WITH BASE COVER. FIXTURE AND POLE TO BE DARK BRONZE FINISH. HEADS TO BE 30' ABOVE GRADE.	UNIV	LED 4000K	N/A	VARIES	LITHONIA	(2) MR2 LED 60C 700 40K T2M MVOLT SPA DDBXD	1
Q	8" H X 4-5/16" W X 3-11/16" D WALL CYLINDER, DOWNLIGHT ONLY, CAST ALUMINUM HOUSING IN DARK BRONZE PAINT. SURFACE MOUNT TO FLUSH MOUNT JUNCTION BOX.	UNIV	LED 4000K	N/A	9.1	LITHONIA	OLLWD LED P1 40K MVOLT DOB	

**NOTES:**  
1. COORDINATE POLE HEIGHT AND CONCRETE BASE. REFER TO POLE BASE DETAILS.