

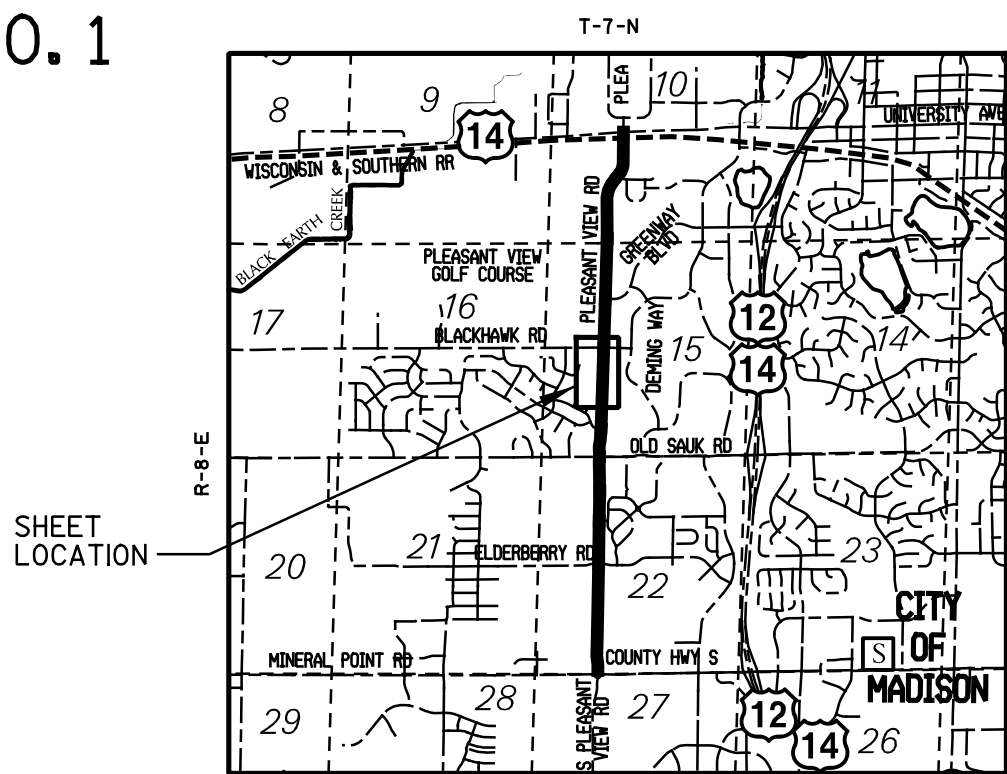
TRANSPORTATION PROJECT PLAT NO: 5992-11-00 - 4.06 AMENDMENT NO. 1

AMENDS PARCEL NO. 7 OF TRANSPORTATION PROJECT PLAT 5992-11-00-4.06 RECORDED AS DOCUMENT NO. 5713371 AND FILED IN VOLUME 61-044A OF PLATS ON PAGES 250 & 251.

THAT PART OF LOT 1 CSM NO. 2041, IN THE NORTHWEST 1/4 OF THE SOUTHWEST 1/4 OF SECTION 15, IN THE TOWN OF MIDDLETON; AND THAT PART OF OUTLOT 1 OF BLACKHAWK SUBDIVISION, AND THAT PART OF LOT 57 OF THE PLAT OF FIRST ADDITION TO BLACKHAWK SUBDIVISION, AND THAT PART OF LOT 143 OF THE PLAT OF THIRD ADDITION TO BLACKHAWK SUBDIVISION, AND OTHER LANDS IN THE NORTHWEST 1/4 OF THE SOUTHWEST 1/4 OF SECTION 15 IN THE CITY OF MADISON; AND THAT PART OF LOT 106 CSM 11328, AND THAT PART OF OUTLOT 4 OF THE PLAT OF OLD SAUK TRAILS PARK FIRST ADDITION, AND THAT PART OF LOTS 30 AND 31 OF THE PLAT OF OLD SAUK TRAILS PARK SECOND ADDITION, IN THE NORTHEAST 1/4 OF THE SOUTHWEST 1/4 OF SECTION 15, T7N, R8E, CITY OF MADISON, DANE COUNTY, WI.

RELOCATION ORDER LOCAL STREET DANE COUNTY CITY OF MADISON, PLEASANT VIEW ROAD (MINERAL POINT ROAD TO USH 14) TO PROPERLY ESTABLISH, LAY OUT, WIDEN, ENLARGE, EXTEND, CONSTRUCT, RECONSTRUCT, IMPROVE, OR MAINTAIN A PORTION OF THE HIGHWAY DESIGNATED ABOVE, THE CITY OF MADISON DEEMS IT NECESSARY TO RELOCATE OR CHANGE SAID HIGHWAY AND ACQUIRE CERTAIN LANDS AND INTERESTS OR RIGHTS IN LANDS FOR THE ABOVE PROJECT.

TO EFFECT THIS CHANGE, PURSUANT TO AUTHORITY GRANTED UNDER SECTION 62.22, WISCONSIN STATUTES, THE CITY OF MADISON HEREBY ORDERS THAT:  
1. THAT PORTION OF SAID HIGHWAY AS SHOWN ON THIS PLAT IS LAY OUT AND ESTABLISHED TO THE LINES AND WIDTHS AS SO SHOWN FOR THE ABOVE PROJECT.  
2. THE LANDS OR INTERESTS OR RIGHTS IN LANDS AS SHOWN ON THIS PLAT ARE REQUIRED BY THE CITY FOR THE ABOVE PROJECT AND SHALL BE ACQUIRED IN THE NAME OF THE CITY OF MADISON, PURSUANT TO THE PROVISIONS OF SECTION 62.22, WISCONSIN STATUTES.



APPROVED FOR THE CITY OF MADISON  
RELOCATION ORDER APPROVED BY THE COMMON COUNCIL, RESOLUTION:  
FILE ID: \_\_\_\_\_  
DATE: \_\_\_\_\_ CITY CLERK  
RELOCATION ORDER APPROVED BY THE PLANNING COMMISSION  
DATE: \_\_\_\_\_ EXECUTIVE SECRETARY  
RELOCATION ORDER APPROVED BY THE BOARD OF PUBLIC WORKS  
DATE: \_\_\_\_\_ EXECUTIVE SECRETARY

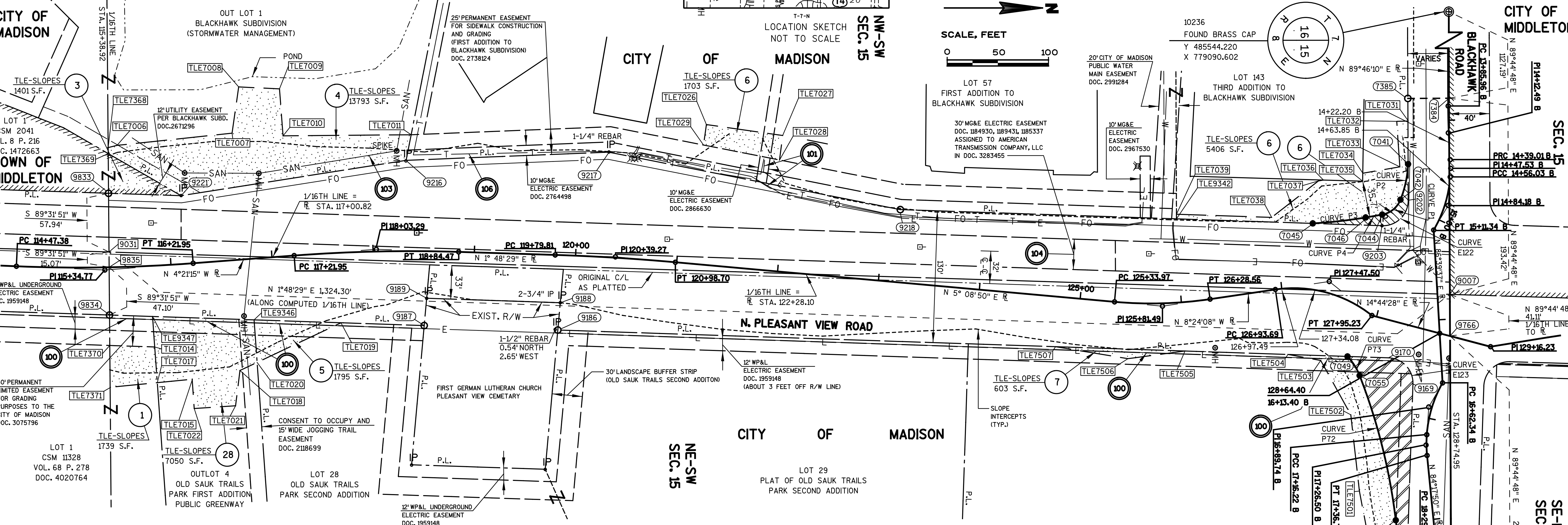
STRAND ASSOCIATES, INC. 910 WEST WINGRA DRIVE, MADISON, WI 53715 (608) 251-4843  
I, HEATHER S. BARTELT, PROFESSIONAL LAND SURVEYOR, HEREBY CERTIFY THAT IN FULL COMPLIANCE WITH THE PROVISIONS OF SECTION 84.095 OF THE WISCONSIN STATUTES AND UNDER THE DIRECTION OF THE CITY OF MADISON, I HAVE SURVEYED AND MAPPED TRANSPORTATION PROJECT PLAT 5992-11-00-4.06 AMENDMENT NO. 1 AND THAT SUCH PLAT CORRECTLY REPRESENTS ALL EXTERIOR BOUNDARIES OF THE SURVEYED LAND.



(SIGNATURE) *Heather S. Bartelt* DATE 6/18/21  
(PRINTED NAME) HEATHER S. BARTELT  
(REGISTRATION NUMBER) S - 2797

FOR ADDITIONAL INFORMATION REFER TO THE TITLE SHEET, RECORDED IN THE OFFICE OF REGISTER OF DEEDS, IN DANE COUNTY AS DOCUMENT NO. 5668191.

RESERVED FOR REGISTER OF DEEDS  
PROJECT NUMBER 5992-11-02-4.06  
SHEET 1 OF 2  
AMENDMENT NO. 1



SCHEDULE OF LANDS & INTERESTS REQUIRED						
PARCEL NUMBER	OWNER(S)	INTEREST REQUIRED	R/W S.F. REQUIRED			PLE S.F.
			NEW	EXISTING	TOTAL	
1	AX MADISON GREENWAY LLP	TLE	---	---	---	1739
3	ANDREA E MACE	TLE	---	---	---	1401
4	CITY OF MADISON - (STORM WATER)	TLE	---	---	---	13793
5	DEMING OAKS LLC	TLE	---	---	---	1795
6	BOULDER CREEK APARTMENTS LLC	FEE, TLE	770	---	770	7109
7	BLACKHAWK VIEW INVESTMENTS LLC	FEE, TLE	5592	---	5592	9734
28	CITY OF MADISON - (STORM WATER)	TLE	---	---	---	7050

UTILITY INTERESTS REQUIRED		
UTILITY NUMBER	OWNER(S)	INTEREST REQUIRED
100	ALLIANT ENERGY (WP&L) - ELECTRIC	RELEASE OF RIGHTS
101	MADISON GAS & ELECTRIC - ELECTRIC	RELEASE OF RIGHTS
102	CHARTER COMMUNICATIONS	RELEASE OF RIGHTS
103	CITY OF MADISON - SANITARY SEWER	RELEASE OF RIGHTS
104	AMERICAN TRANSMISSION COMPANY	RELEASE OF RIGHTS
106	TDS TELECOM	RELEASE OF RIGHTS

- 100 ALLIANT ENERGY - ELECTRIC (WP&L) DOC. 1959148 (WITHIN EXISTING CITY OF MADISON PLE DOC. 3075796 PARCELS 15,7,28)
- 101 MADISON GAS & ELECTRIC - ELECTRIC DOC. 2866630 & 2764498 (WITHIN EXISTING GRADING EASEMENT DOC. 2738124) PARCEL 6
- 102 CHARTER COMMUNICATIONS EASEMENT OVER LOT 57 & LOT 143 DOC. 4685862 PARCEL 6
- 103 CITY OF MADISON - SANITARY SEWER NO RECORDED EASEMENT PARCEL 4
- 104 AMERICAN TRANSMISSION COMPANY DOC. 1185337, 1184930, 1184931, 3283455 WITHIN EXISTING R/W OF N. PLEASANT VIEW ROAD
- 106 TDS TELECOM NO RECORDED EASEMENT (WITHIN EXISTING GRADING EASEMENT DOC. 2738124) PARCEL 6

HWY	BASIS OF EXIST. R/W
PLEASANT VIEW ROAD	PLAT OF OLD SAUK TRAILS PARK FIRST ADDITION, PLAT OF OLD SAUK TRAILS PARK SECOND ADDITION, PLAT OF FIRST ADDITION TO BLACKHAWK SUBDIVISION, PLAT OF THIRD ADDITION TO BLACKHAWK SUBDIVISION, PLAT OF LAND AND CEMETERY OF THE GERMAN LUTHERAN CHURCH SOCIETY DATED OCT. 1868 AND SUBSEQUENT SURVEY BY DAN RODMAN (CITY OF MADISON PARKS), AND CSM 1419, CSM 2041 & CSM 11328
BLACKHAWK ROAD	PLAT OF THIRD ADDITION TO BLACKHAWK SUBDIVISION, PLAT OF OLD SAUK TRAILS PARK SECOND ADDITION, CSM 14028

POSITIONS SHOWN ON THIS PLAT ARE WISCONSIN COUNTY COORDINATES, DANE COUNTY, NAD83(2007) IN US SURVEY FEET. VALUES SHOWN ARE GRID COORDINATES, GRID BEARINGS, AND GRID DISTANCES. GRID DISTANCES MAY BE USED AS GROUND DISTANCES.  
SEE SHEET 2 OF 2 FOR STATION/OFFSET TABLES, CURVE DATA, AND COURSE TABLES

TRANSPORTATION PROJECT PLAT NO: 5992-11-00 - 4.06 AMENDMENT NO.1

RELOCATION ORDER LOCAL STREET DANE COUNTY CITY OF MADISON, PLEASANT VIEW ROAD (MINERAL POINT ROAD TO USH 14)

P.I. = 115+34.77  
Y = 484,222.33  
X = 780,367.14  
DELTA = 6° 46' 03" (LT)  
D = 3° 52' 36"  
T = 87.39'  
L = 174.57'  
R = 1,478.00'  
P.C. = 114+47.38  
P.T. = 116+21.95

P.I. = 118+03.29  
Y = 484,490.28  
X = 780,366.74  
DELTA = 6° 09' 44" (RT)  
D = 3° 47' 31"  
T = 81.33'  
L = 162.51'  
R = 1,511.00'  
P.C. = 117+21.95  
P.T. = 118+84.47

P.I. = 120+39.27  
Y = 484,726.31  
X = 780,374.19  
DELTA = 3° 20' 21" (RT)  
D = 2° 48' 31"  
T = 59.46'  
L = 118.89'  
R = 2,040.00'  
P.C. = 119+79.81  
P.T. = 120+98.70

P.I. = 125+81.49  
Y = 485,266.37  
X = 780,422.84  
DELTA = 13° 32' 58" (LT)  
D = 14° 19' 26"  
T = 47.52'  
L = 94.59'  
R = 400.00'  
P.C. = 125+33.97  
P.T. = 126+28.56

P.I. = 127+47.50  
Y = 485,431.04  
X = 780,398.52  
DELTA = 46° 55' 16" (RT)  
D = 46° 12' 23"  
T = 53.82'  
L = 101.55'  
R = 124.00'  
P.C. = 126+93.69  
P.T. = 127+95.23

P.I. = 129+16.23  
Y = 485,590.24  
X = 780,462.82  
DELTA = 23° 56' 50" (LT)

P.I. = 14+12.49 B  
Y = 485,548.54  
X = 780,251.93  
DELTA = 3° 47' 58" (LT)  
D = 7° 09' 43"  
T = 26.54'  
L = 53.05'  
R = 800.00'  
P.C. = 13+85.96 B  
P.R.C. = 14+39.01 B  
D.A. = N 85°58'12" E

P.I. = 14+47.53 B  
Y = 485,551.00  
X = 780,286.90  
DELTA = 8° 07' 27" (RT)  
D = 47° 44' 47"  
T = 8.52'  
L = 17.02'  
R = 120.00'  
P.R.C. = 14+39.01 B  
P.C.C. = 14+56.03 B  
D.B. = S 85°58'12" W  
D.A. = S 85°54'21" E

P.I. = 14+84.18 B  
Y = 485,548.38  
X = 780,323.49  
DELTA = 26° 24' 39" (RT)  
D = 47° 44' 47"  
T = 28.16'  
L = 55.32'  
R = 120.00'  
P.C.C. = 14+56.03 B  
P.T. = 15+11.34 B  
D.B. = N 85°54'21" W

P.I. = 16+89.74 B  
Y = 485,529.26  
X = 780,522.26  
DELTA = 25° 43' 28" (LT)  
D = 47° 44' 47"  
T = 27.40'  
L = 53.88'  
R = 120.00'  
P.C. = 16+62.34 B  
P.C.C. = 17+16.22 B  
D.A. = S 85°54'08" E

P.I. = 17+26.50 B  
Y = 485,526.57  
X = 780,559.85  
DELTA = 9° 48' 02" (LT)  
D = 47° 44' 47"  
T = 10.29'  
L = 20.53'  
R = 120.00'  
P.C.C. = 17+16.22 B  
P.T. = 17+36.74 B  
D.B. = N 85°54'08" W

P.I. = 18+75.91 B  
Y = 485,541.42  
X = 780,708.57  
DELTA = 7° 38' 26" (RT)  
D = 8° 11' 06"  
T = 46.74'  
L = 93.35'  
R = 700.00'  
P.C. = 18+29.16 B  
P.T. = 19+22.51 B

POINT #	STATION	OFFSET	NORTHING	EASTING
7041	14+41.20 B	41.75'	485508.84	780282.76
7042	127+69.25	-112.06'	485501.30	780317.82
7044	127+63.75	-91.08'	485483.30	780332.52
7045	127+24.24	-64.77'	485414.72	780341.22
7046	127+55.45	-82.29'	485466.94	780335.37
7049	127+95.23	47.06'	485449.02	780472.44
7050	18+15.00 B	36.43'	485499.11	780651.58
7051	18+48.10 B	35.00'	485503.49	780683.46
7052	19+17.80 B	34.80'	485505.19	780749.63
7054	17+97.21 B	37.10'	485496.69	780633.94
7055	16+83.36 B	77.69'	485460.97	780491.25
7384	127+68.61	-222.96'	485549.20	780217.78
7385	13+78.36 B	39.80'	485508.60	780217.96
7386	129+16.23	289.19'	485551.55	780749.42
9007	128+64.32	-39.72'	485550.06	780411.20
9031	115+39.10	-15.07'	484226.42	780369.42
9169	128+51.59	55.05'	485513.63	780499.61
9170	128+21.67	36.22'	485489.49	780473.79
9186	119+84.93	73.93'	484669.47	780446.38
9187	118+51.13	73.34'	484537.55	780441.96
9188	119+86.49	46.93'	484671.91	780419.44
9189	118+53.38	46.39'	484539.99	780415.03
9202	127+72.96	-115.05'	485508.98	780318.42
9203	127+66.36	-81.03'	485483.15	780343.50
9216	118+32.83	-89.56'	484519.71	780279.01
9217	120+27.00	-103.55'	484719.67	780270.95
9218	123+15.20	-71.63'	485007.58	780327.61
9221	116+14.83	-67.33'	484297.58	780313.88
9766	128+74.96	0.00'	485550.24	780452.32
9768	128+36.37	-144.06'	485549.58	780303.18
9769	128+25.62	-184.21'	485549.40	780261.62
9833	115+39.82	-73.00'	484225.95	780311.48
9834	115+38.39	47.09'	484226.93	780431.58

POINT #	STATION	OFFSET
TLE7006	115+50.00	-120.00'
TLE7007	116+70.00	-125.00'
TLE7008	116+80.00	-170.00'
TLE7009	117+20.00	-165.00'
TLE7010	117+20.00	-118.58'
TLE7011	118+37.52	-114.77'
TLE7014	115+80.12	80.09'
TLE7015	116+13.00	114.00'
TLE7017	115+80.89	115.35'
TLE7018	116+60.00	109.00'
TLE7019	117+65.03	69.04'
TLE7020	116+77.52	102.31'
TLE7021	116+53.08	143.32'
TLE7022	116+13.00	143.00'
TLE7026	121+17.00	-138.00'
TLE7027	121+93.00	-134.00'
TLE7028	121+92.00	-109.68'
TLE7029	121+16.00	-117.65'
TLE7031	14+00.00 B	39.94'
TLE7032	14+00.00 B	51.00'
TLE7033	14+45.01 B	50.00'
TLE7034	14+64.90 B	86.16'
TLE7035	127+47.66	-115.34'
TLE7036	127+27.57	-108.42'
TLE7037	127+25.00	-107.00'
TLE7038	126+98.00	-71.00'
TLE7039	126+02.21	-87.00'
TLE7056	125+86.00	187.00'
TLE7057	20+55.00 B	34.80'
TLE7058	20+55.00 B	38.00'
TLE7368	115+40.42	-118.03'
TLE7369	115+40.33	-112.13'
TLE7371	115+37.65	118.37'
TLE7500	19+00.00 B	55.00'
TLE7501	17+65.00 B	70.00'
TLE7502	17+07.53 B	76.72'
TLE7503	127+69.92	65.00'
TLE7504	127+00.00	65.15'
TLE7505	126+00.00	48.15'
TLE7506	125+50.00	55.00'
TLE7507	124+80.00	49.27'
TLE9342	126+01.77	-82.46'
TLE9346	116+77.67	60.75'
TLE9347	115+79.43	49.93'

COURSE	BEARING	DIST.
9031-9833	S 89° 31' 51" W	57.94'
9833-9221	N 1° 54' 53" E	71.67'
9221-9216	N 8° 55' 17" W	224.86'
9216-9217	N 2° 18' 19" W	200.12'
9217-9218	N 11° 07' 55" E	293.42'
9218-7045	N 1° 54' 53" E	407.37'
7045-7046	SEE CURVE P3	
7046-7044	SEE CURVE P4	
7044-7042	SEE CURVE P1	
7042-7041	SEE CURVE P2	
7041-7385	S 89° 46' 55" W	64.81'
7385-7384	N 0° 15' 12" W	40.61'
7384-9007	N 89° 44' 48" E	193.42'
9007-9766	N 89° 44' 48" E	41.11'
9766-7386	N 89° 44' 48" E	297.11'
7386-7052	S 0° 15' 12" E	46.36'
7052-7051	SEE CURVE P5	
7051-7050	S 82° 10' 30" W	32.18'
7050-7054	S 82° 10' 34" W	17.81'
7054-7055	SEE CURVE P72	
7055-7049	SEE CURVE P73	
7049-9186	S 1° 54' 53" W	779.98'
9186-9188	N 84° 49' 29" W	27.04'
9188-9189	S 1° 54' 53" W	132.00'
9189-9187	S 84° 49' 28" E	27.04'
9187-9834	S 1° 54' 53" W	310.79'
9834-9031	S 89° 31' 51" W	62.17'
7041-9202	N 89° 46' 55" E	35.66'
9202-9203	SEE CURVE E122	
9203-7045	S 1° 54' 53" W	68.46'
7049-9170	N 1° 54' 53" E	40.49'
9170-9169	SEE CURVE E123	
9169-7052	S 88° 03' 56" E	250.16'

CURVE P1  
R = 24.00'  
L = 24.26'  
LC = 23.24'  
LCB = N 39° 14' 45" W  
DELTA = 57°54'57" LT

CURVE P3  
R = 487.00'  
L = 52.57'  
LC = 52.55'  
LCB = N 6° 23' 11" W  
DELTA = 6°11'07" LT

CURVE P5  
R = 665.00'  
L = 66.22'  
LC = 66.19'  
LCB = S 88° 31' 46" W  
DELTA = 5° 42' 18" LT

CURVE P73  
R = 58.00'  
L = 22.43'  
LC = 22.29'  
LCB = S 57° 33' 44" W  
DELTA = 22° 09' 16" LT

CURVE E122  
R = 25.00'  
L = 40.20'  
LC = 36.01'  
LCB = S 44° 09' 06" E  
DELTA = 92°07'53" RT

CURVE P2  
R = 107.00'  
L = 36.03'  
LC = 35.86'  
LCB = N 77° 51' 0" W  
DELTA = 19°17'32" LT

CURVE P4  
R = 1176.00'  
L = 16.60'  
LC = 16.60'  
LCB = N 9° 53' 1" W  
DELTA = 0°48'32" LT

CURVE P72  
R = 578.00'  
L = 147.50'  
LC = 147.10'  
LCB = S 75° 57' 00" W  
DELTA = 14° 37' 16" LT

CURVE E123  
R = 25.00'  
L = 39.26'  
LC = 35.35'  
LCB = N 46° 55' 29" E  
DELTA = 89° 58' 48" RT

TPP NUMBER 5992-11-00-4.06  
AMENDMENT NO:  
SHEET 2 OF 2

FILE NAME : S:\MAD\1000--1099\1020\101\Micoros\TPP\040106.rp A1 2 of 2.dgn  
APPRAISAL PLAT DATE: 6/18/21

PLOT DATE :

PLOT BY : \_username\_

PLOT NAME :

PLOT SCALE : \$\$.....plotscale.....\$\$

5992-11-00-4.06 AMEND. NO. 1