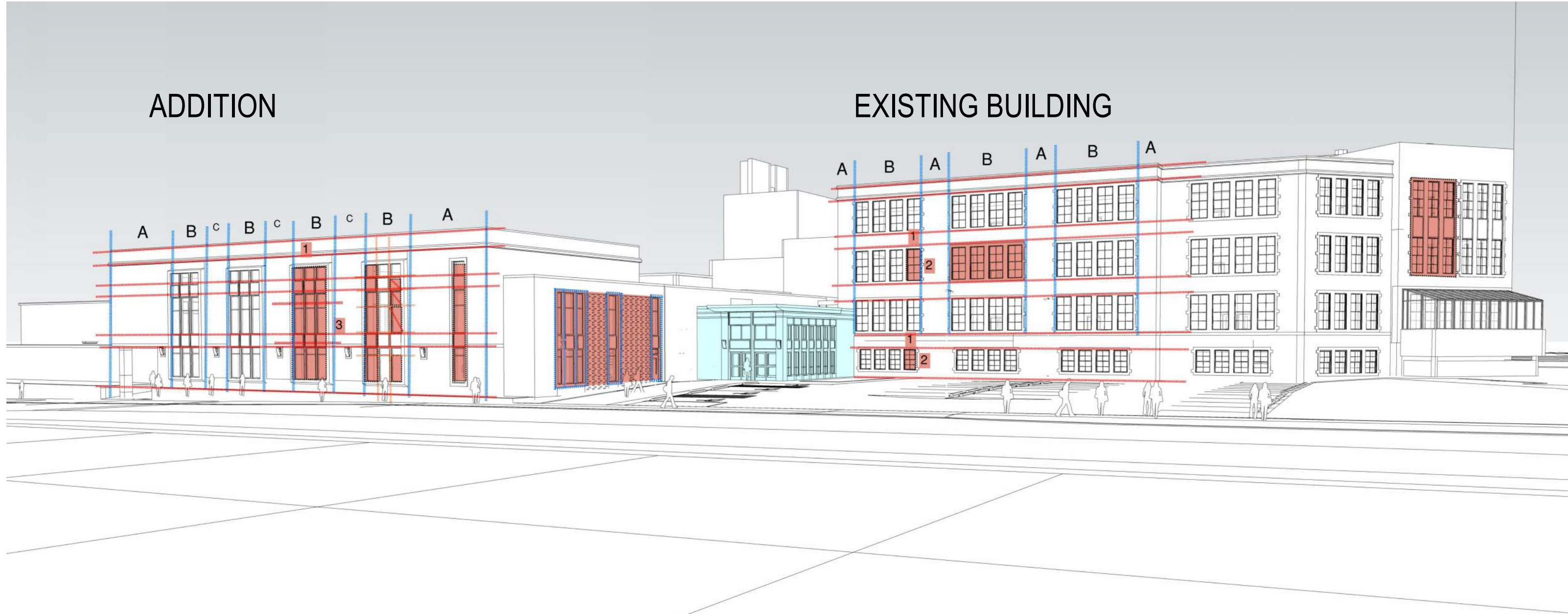


E



PROPORTION STUDY EXISTING BUILDING APPLIED TO THE ADDITION

D



COLOR ELEVATION

C



VIEW FROM EAST WASHINGTON AVENUE



VIEW OF MAIN ENTRY

B



VIEW OF MAIN ENTRY

A



VIEW OF MAIN ENTRY



milwaukee 333 East Chicago Street
Milwaukee, Wisconsin 53202
414.271.5350
madison 309 West Johnson Street, Suite 202
Madison, Wisconsin 53703
608.442.5350
denver 1899 Wynkoop Street, Suite 300
Denver, Colorado 80202
303.595.4500

PROJECT INFORMATION
MMSD - EAST HS
ADDITION AND
RENOVATION

2222 E.
WASHINGTON AVE
MADISON, WI 53704

ISSUANCE AND REVISIONS	
DATE	DESCRIPTION
06/07/2021	LANDMARKS COMMISSION REVIEW

KEY PLAN

SHEET INFORMATION
**PROGRESS DOCUMENTS
NOT FOR CONSTRUCTION**
These documents reflect progress and intent and may be subject to change, including additional detail. These are not final construction documents and shall not be used for final bidding or construction-related purposes.

PROJECT MANAGER JM
PROJECT NUMBER 320534-01

PERSPECTIVES
A-031
© 2020 Epstein Uhen Architects, Inc.