



Madison Parks Division

210 Martin Luther King, Jr. Blvd., Room 104
Madison, WI 53703
608-266-4711 • cityofmadison.com/parks



June 2, 2021

Memorandum of Understanding All-Wheel Spot at Elvehjem Park

This memo provides the approval to Madison Skatepark Fund to install an All-Wheel Spot at the defunct tennis courts at Elvehjem Park.

Definition of an All-Wheel Spot:

- An All-Wheel Spot is a collection of “do it yourself” ramps, features and obstacles that can be used by skaters, bikers, scooters and other wheeled action sport participants.

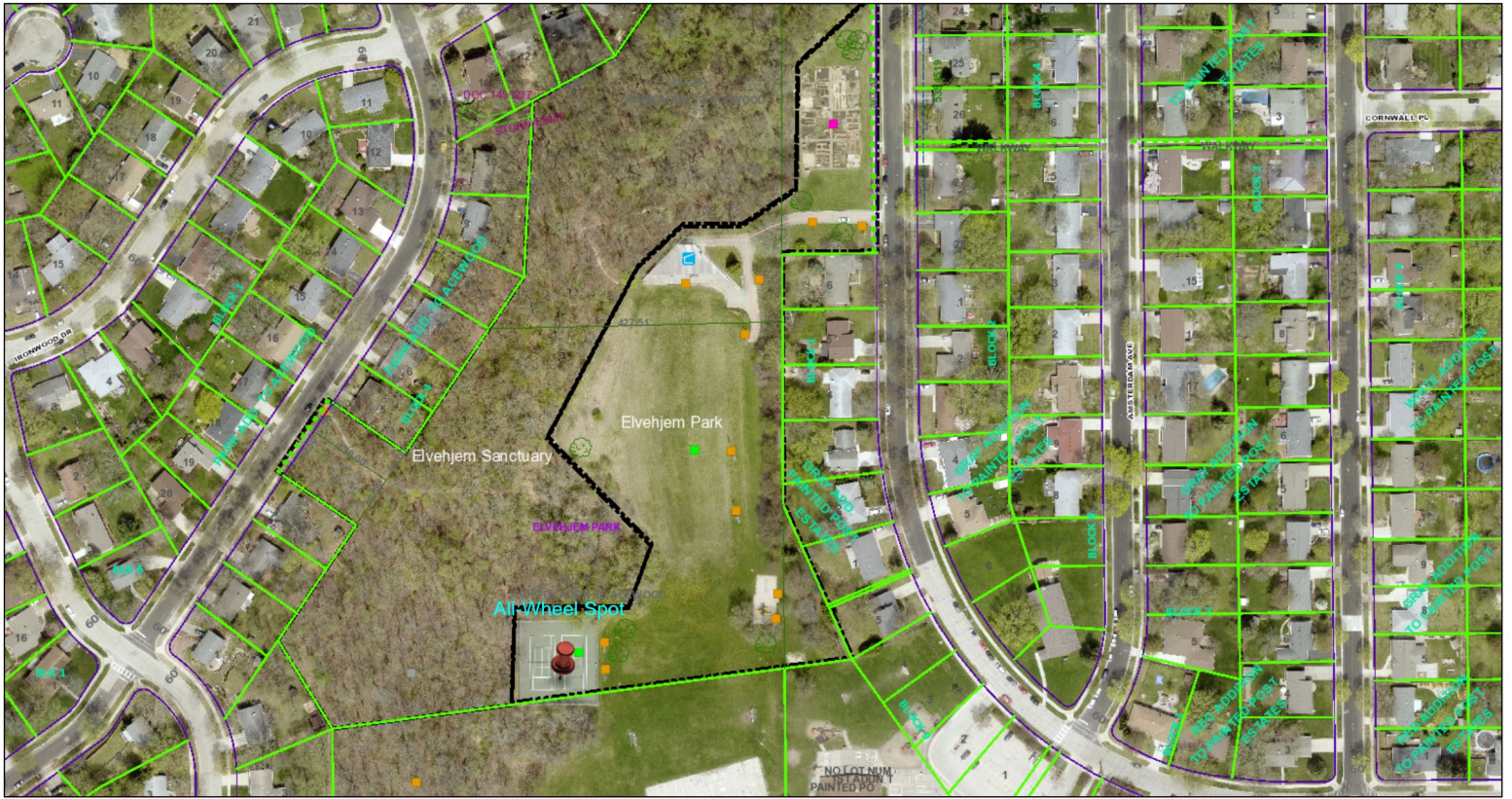
MSF agrees to the following:

- The All-Wheel Spot at Elvehjem Park will be located as shown on the attached map.
- Prior to the installation or removal of features, MSF will provide Madison Parks with a memo of intent, this memo will provide details on the intended additions or removals from the AWS.
- MSF will provide all the funding and labor and all built features and obstacles will become the property of the City of Madison after inspection.
- AWS will be open to all wheeled users during normal operating hours for Elvehjem Park (4 AM to 10 PM).
- Any new obstacle MSF constructs will be CLOSED for use until it is approved by a Madison Parks staff. Should the staff find a problem with an obstacle, MSF will either repair or rebuild the obstacle to address the City’s safety concerns before it is opened for use.
- If the City’s safety concerns cannot be addressed the MSF will remove the obstacle.
- MSF will provide an AWS steward to monitor the condition of the AWS, this steward will be the first point of contact for Madison Parks.
- MSF will keep the AWS free of graffiti and litter, graffiti may be controlled with gray house paint.

Madison Parks agrees to the following:

- Care for the park land around the All-Wheel Spot as we do the remainder of Elvehjem Park.
- Parks will provide MSF a six (6) week notification period if the All-Wheel Spot needs to be removed for any reason.
- Parks will allow MSF to remove obstacles from the park, subject to the City’s ordinances on the disposal of the City’s personal property.

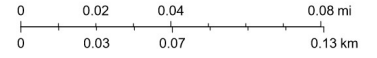
ArcGIS Web Map



5/3/2021, 3:26:46 PM

1:2,257

- | | | | | | |
|------------------------------|---------------------------------|-------------------------------|-----------------------------|----------------------------|----------------------------|
| Proposed_Or_Reserved_Lines | LandsAcquiredForROW_Leaderlines | Sanitary_Sewer_Easement_Lines | Public_Easement_Text | Right_Of_Way_Width_Text | Plat_Name_CSM_Number_Text |
| Proposed_Or_Reserved_Text | LandsAcquiredForROW_Lines | Public_Easement_Lines | Right_Of_Way_Lines | Railroad_ROW_Text | Plat_CSM_Lot_Number_Text |
| Vacated_ROW_Text_LeaderLines | LandsAcquiredForROW_Text | Water_Utility_Easement_Text | Railroad_ROW_Lines | Platted_Lots_In_Parks_Text | Street_Name_Change_Arrows |
| Vacated_ROW_Text | Water_Utility_Easement_Lines | Storm_Sewer_Easement_Text | Plat_CSM_Lot_Lines | Platted_Lot_Dimension_Text | Street_Name_Alternate_Text |
| Vacated_ROW_Lines | Storm_Sewer_Easement_Lines | Sanitary_Sewer_Easement_Text | Platted_Lots_In_Parks_Lines | Platted_Block_Number_Text | Street Names 1 |



City of Madison Engineering, Esri, HERE, Garmin, (c) OpenStreetMap contributors, and the GIS user community

Web AppBuilder for ArcGIS

City of Madison Wisconsin Engineering Dept. | City of Madison Engineering | City of Madison IT | Calvin Lawrence, Matt Rehwald, Jonathan Kult | U.S. Department of Agriculture, Natural Resources Conservation Service |