

# COVID-19 Update

Janel Heinrich, Director  
Public Health Madison &  
Dane County  
April 7, 2021

# Current Order

**Order #15 went into effect today and is in place until May 5 at 12:01am.**

Increases gathering limits outdoors, eliminates face covering requirements outdoors (face coverings remain required in indoor public spaces), updates school and childcare policy requirements, allows self-service food stations, and allows saunas and steam rooms to reopen, with certain provisions.



# Testing Update

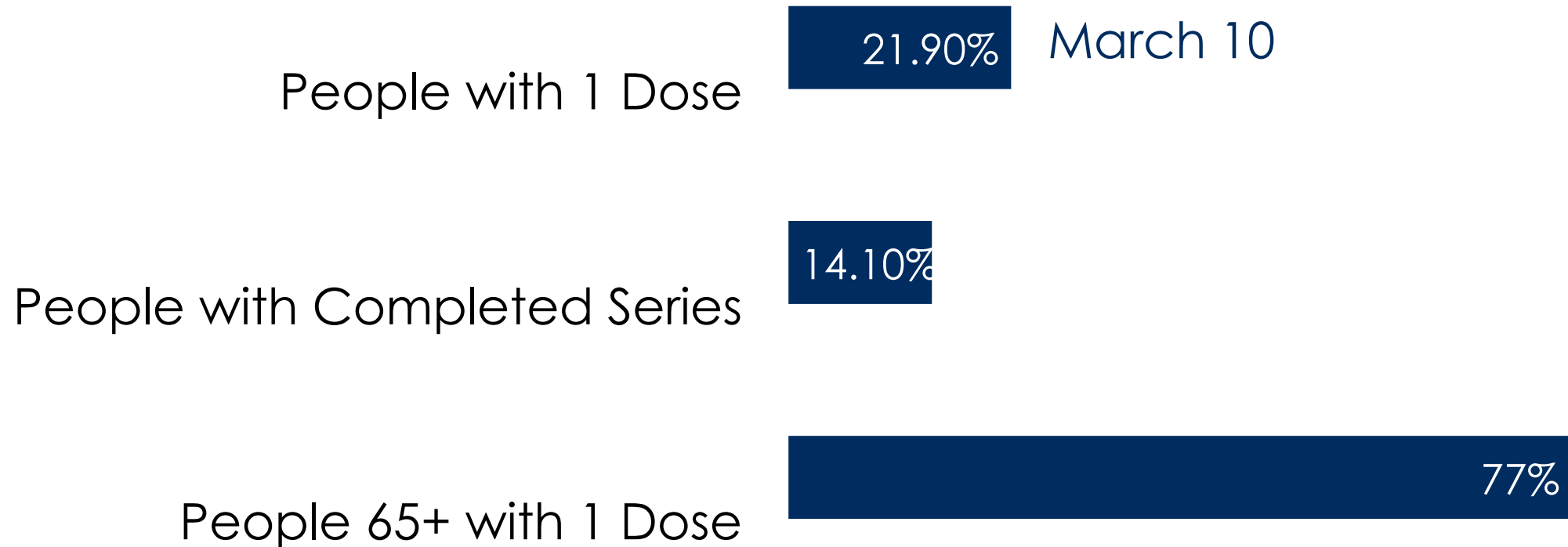
**As of April 6:**

**South Madison test site:**  
11,351 tested

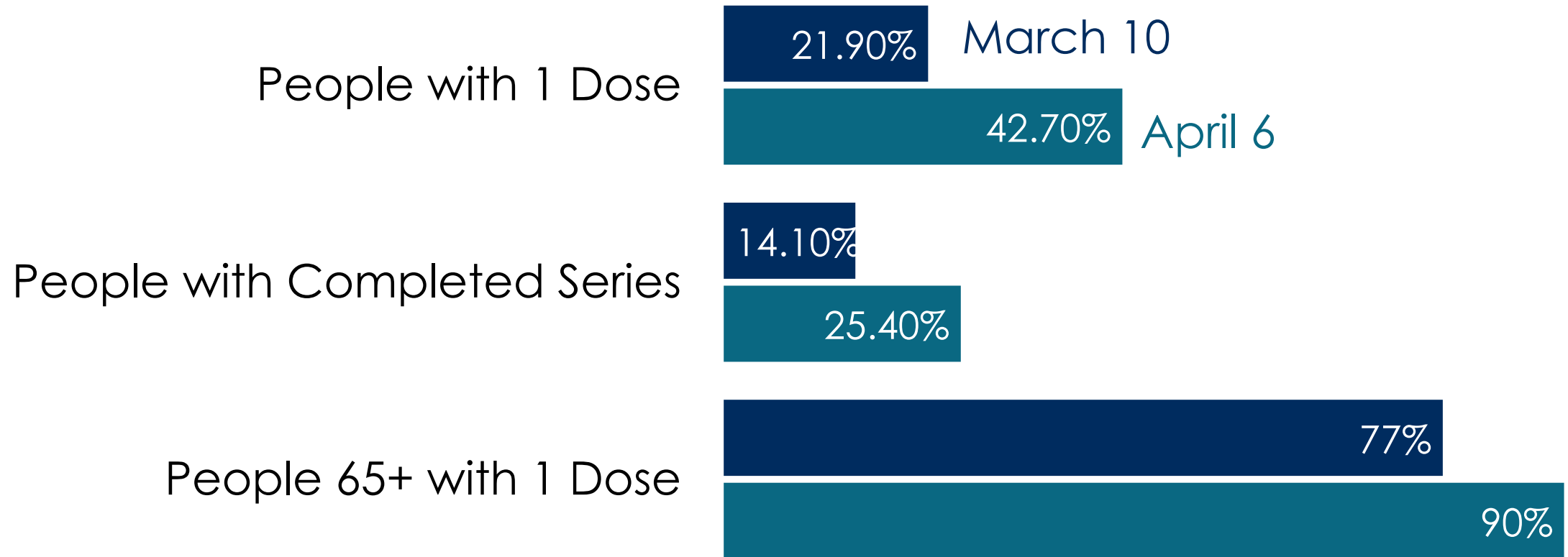
**Alliant test site:**  
406,771 tested



# COVID-19 Vaccine

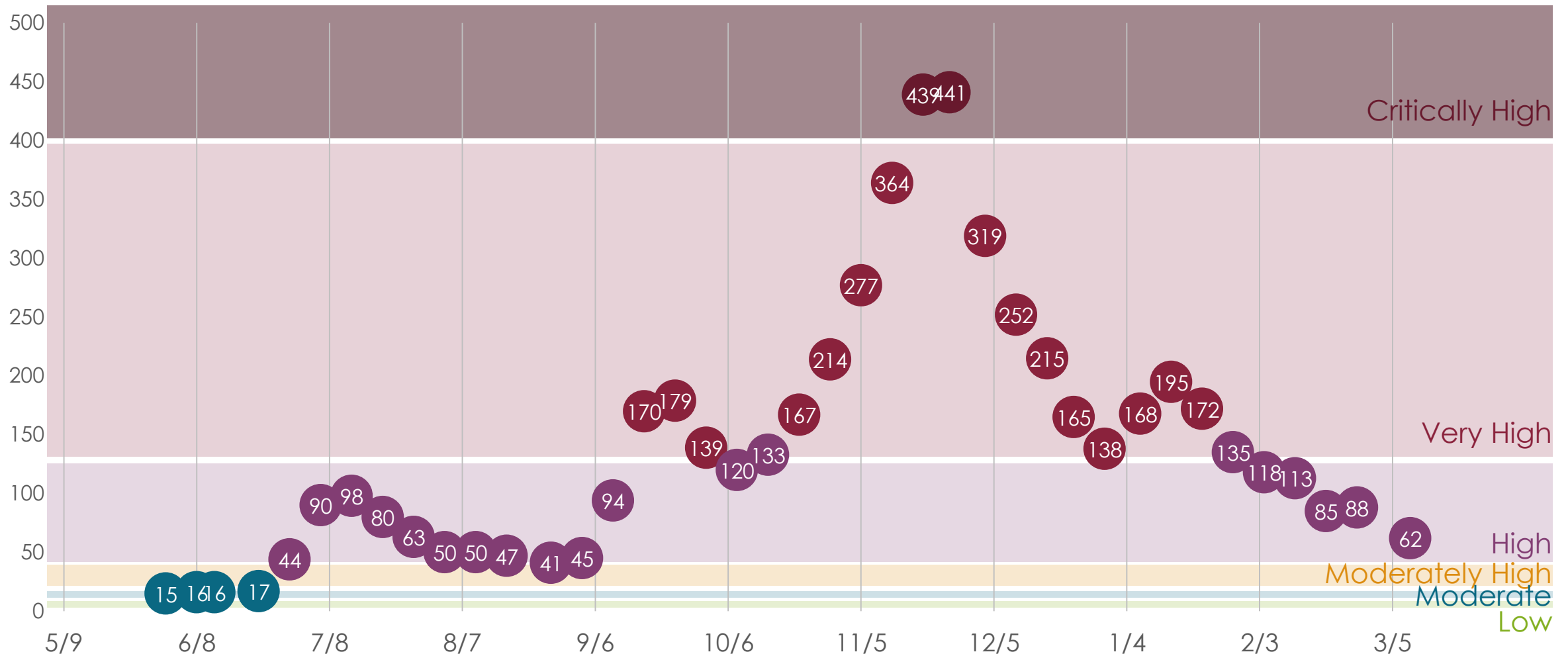


# COVID-19 Vaccine



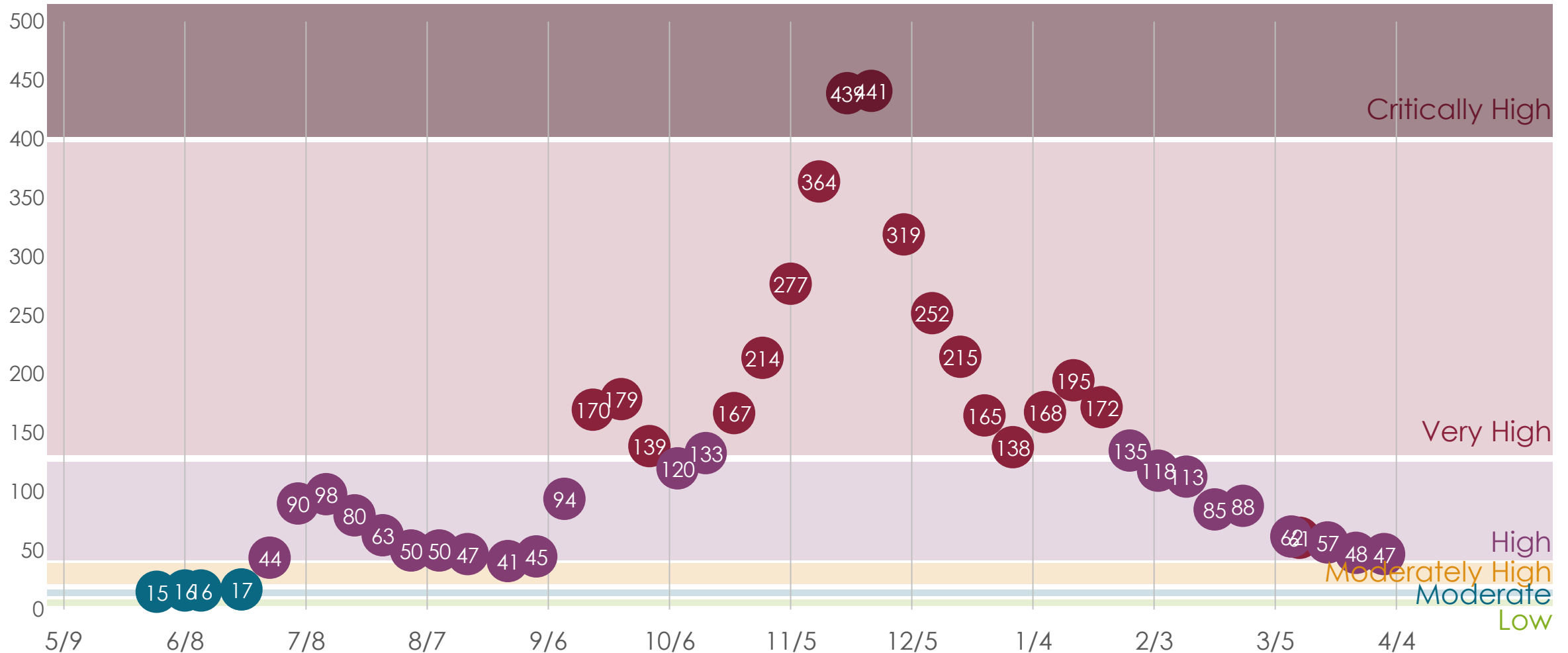
**DATA**

# The last time we met, our 14-day averages looked like this:



# Our current 14-day average

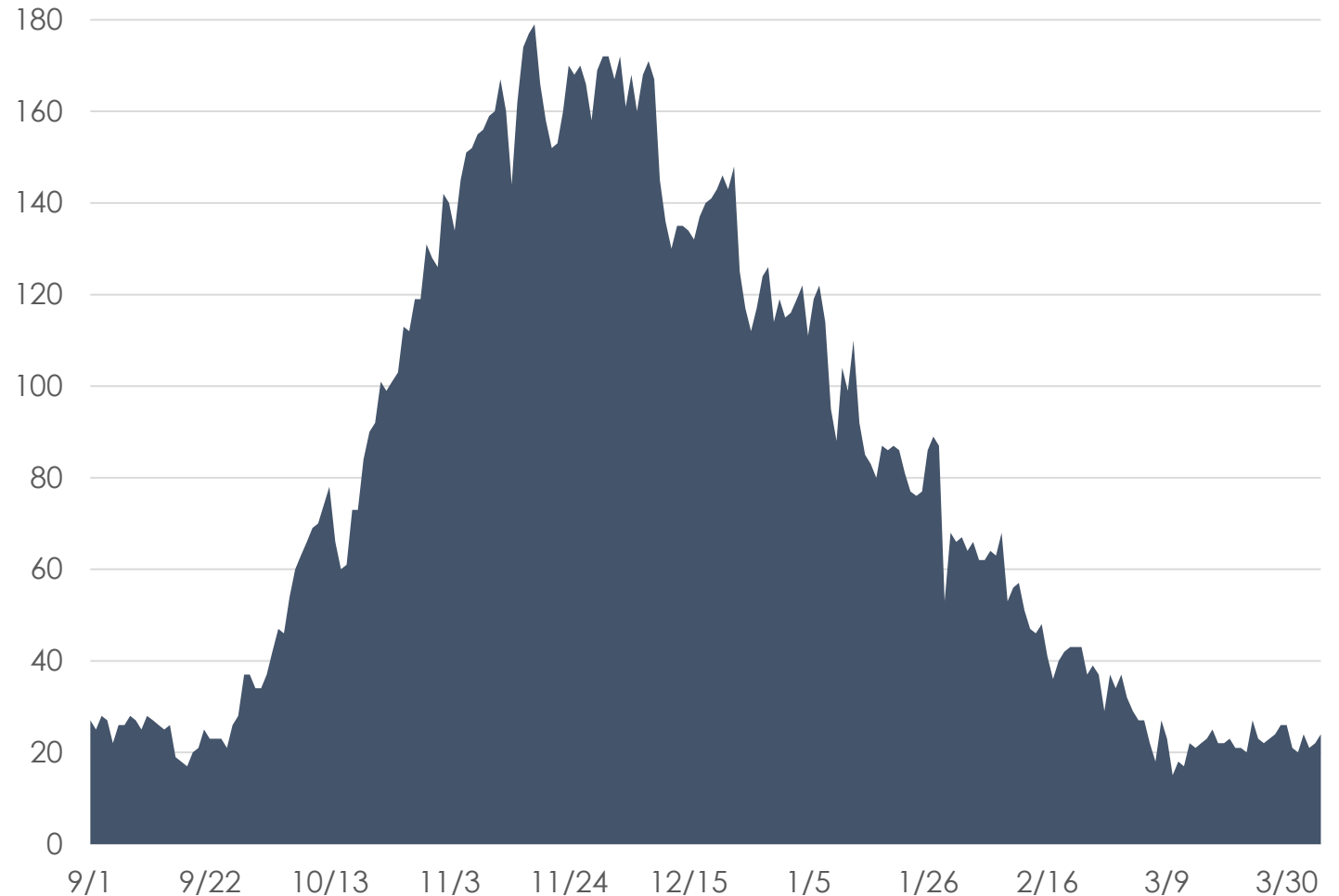
We're at our lowest level since October 15.



# Hospitalizations

**Hospitalizations remain stable, with about two dozen per day.**

**Yesterday there were 24.**

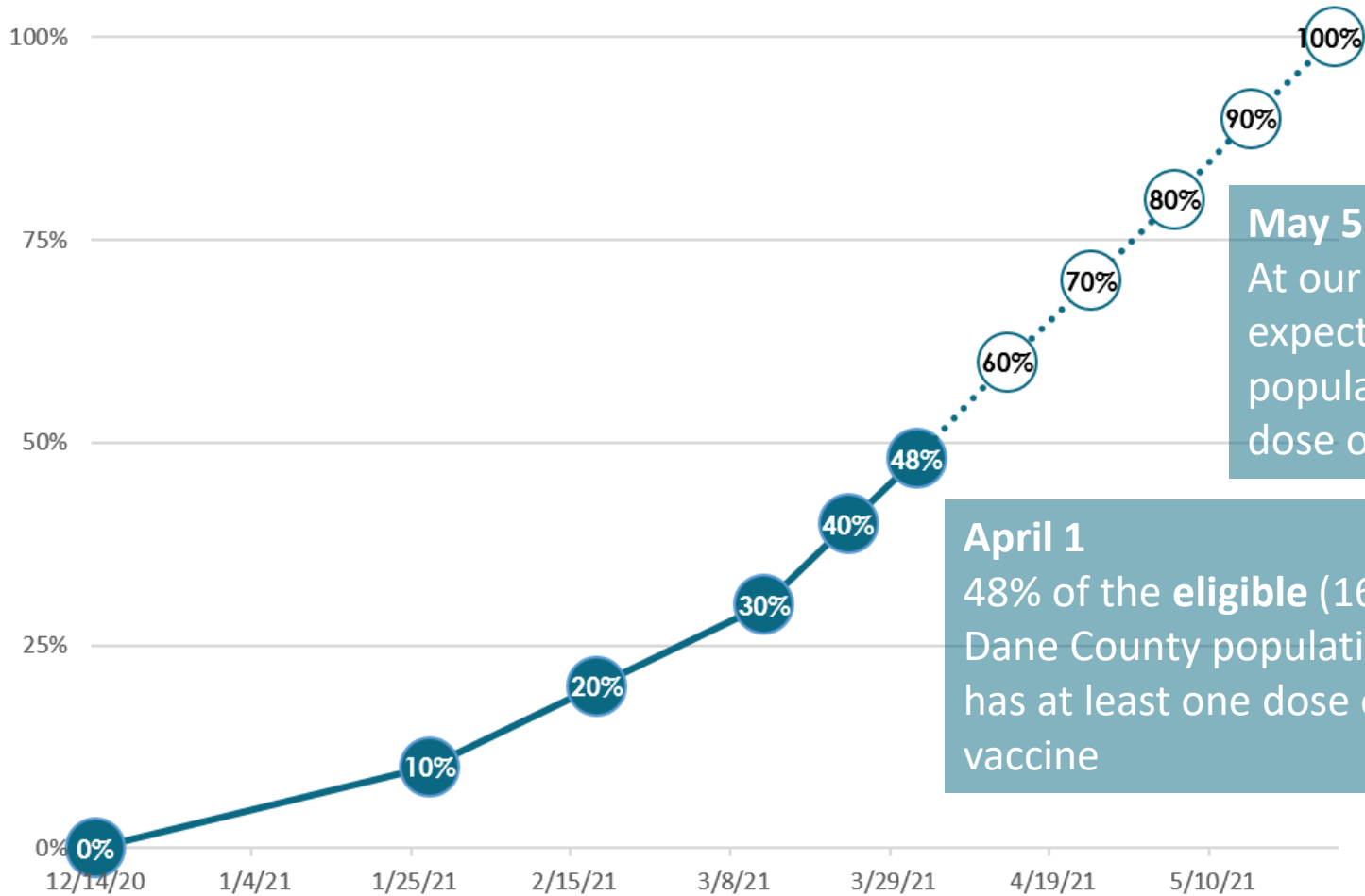


**LOOKING  
AHEAD**

# Vaccination Projection

Share of Dane County residents age 16+ with at least one dose of vaccine

- actual
- projected



**May 5**

At our current pace, we could expect 80% of the **eligible** (16+) population to have at least one dose of vaccine.

**April 1**

48% of the **eligible** (16+) Dane County population has at least one dose of vaccine

# Looking Ahead

## Continue ramping up

Supply of vaccine continues to increase statewide.

This week 26 FEMA support staff joined our team, increasing our weekly capacity from 5,600 to 7,700 doses (assuming continued vaccine supply).



# COVID-19 Update

Janel Heinrich, Director  
Public Health Madison &  
Dane County  
March 11, 2021