

PROJECT SCOPE – TENNEY PARK BEACH SHELTER

- New Beach Shelter Fall 2021 Construction Start
- New Beach Enclosure for Summer 2022



TENNEY PARK

play
**MADISON
PARKS**



TENNEY PARK BEACH HISTORY

- 1899 – City Council resolution adopted 7/14/1899 provided \$1500 to MPPDA for park development and named Tenney Park for Dr. D. K. Tenney, who provided a matching grant for the park's creation
- 1913 – First bathhouse was constructed to the north of the current structure in a poorly drained area closer to open field area of today



Tenney Park



Removed c. 1978

TENNEY PARK – Site Structures



1934



1929



1912

TENNEY PARK – Historic Building (Ferry Restroom Building 1909)



EXISTING CONDITIONS



EXISTING PARKING & ACCESS CONDITIONS



There will be no work on the Parking Lot. Currently code compliant, completed in 2012.



Scope includes upgrade to the pedestrian path from parking lot to new shelter

EXISTING PLAYGROUND



Scope includes Landscape edge work only at existing playground that was completed in 2018.

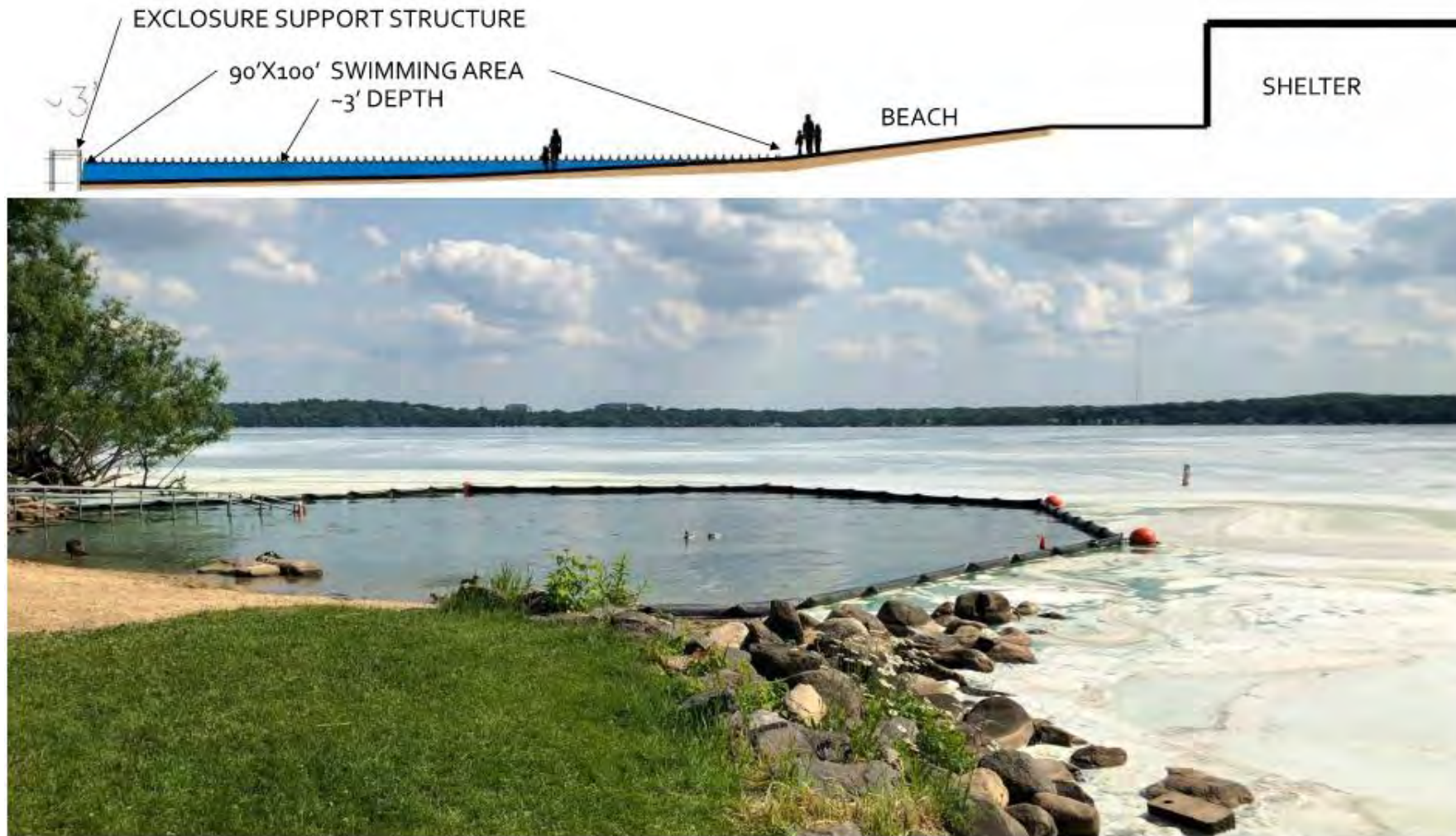
EXISTING BEACH AND SHORELINE CONDITIONS



No Shoreline work in this project scope
Beach will receive Exclosure



BEACH ENCLOSURE EXAMPLE



The Beach Shelter will include interior space for a pump room to operate the Enclosure Swim System.

Non-permanent structure enhances beach safety

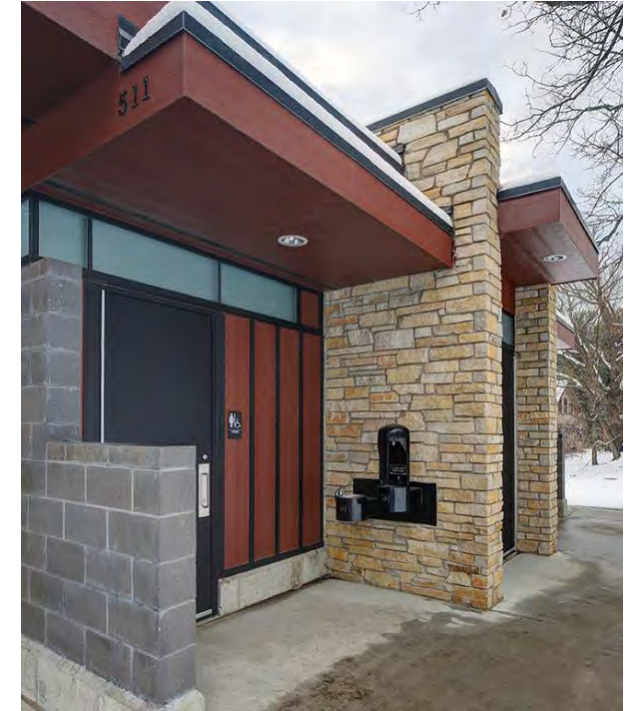
Tell Us About the New Park Shelter Concept!

play
**MADISON
PARKS**



COMPLETED SHELTER DESIGNS

play
**MADISON
PARKS**



SHELTER DESIGN – Warner Beach

(Under Construction – Timber Bark color)

play
**MADISON
PARKS**



EXISTING CONDITIONS

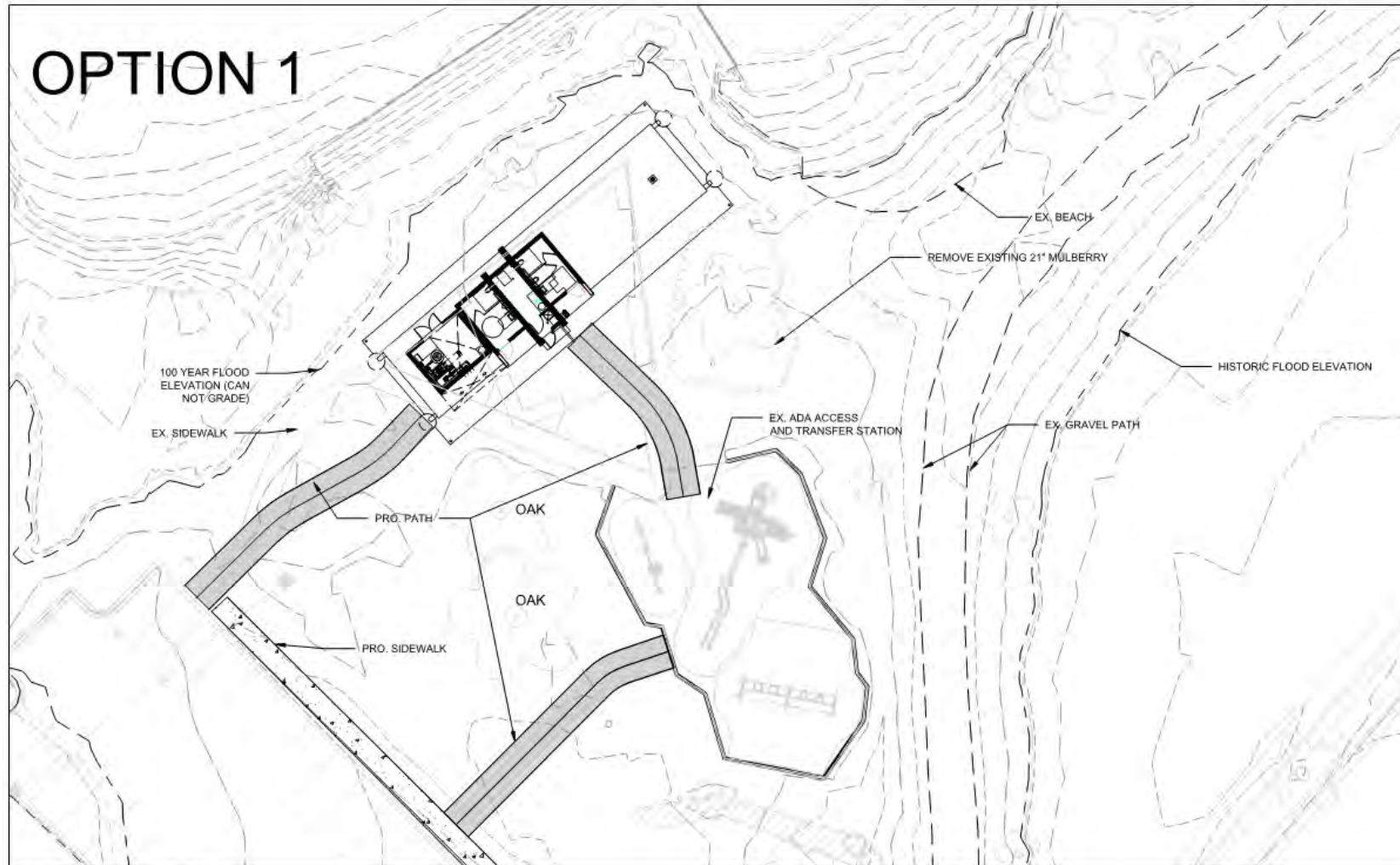


PROPOSED SITE PLAN



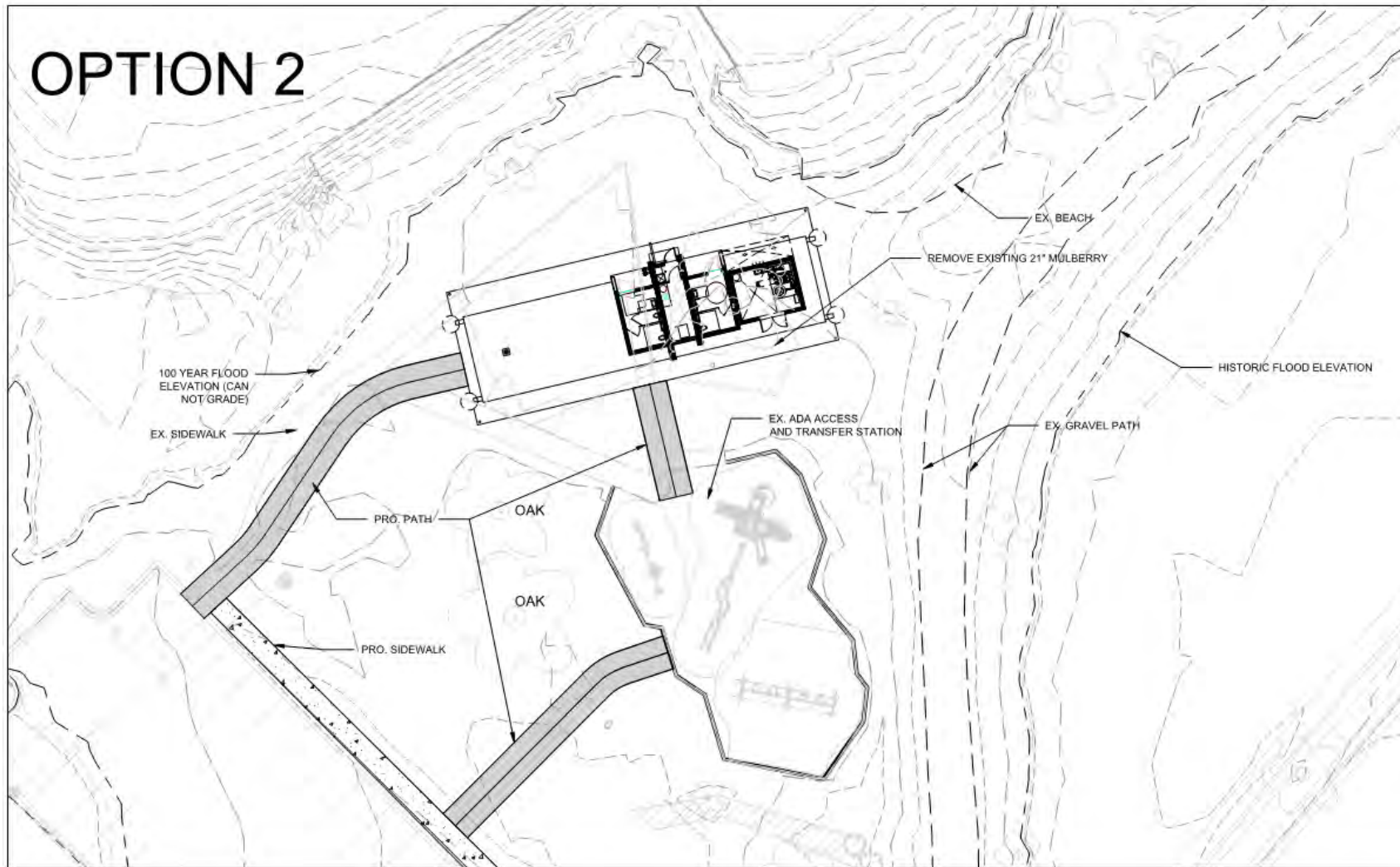
The Beach Shelter will include interior space for a pump room to operate the Enclosure Swim System.

Site Plan - Considerations



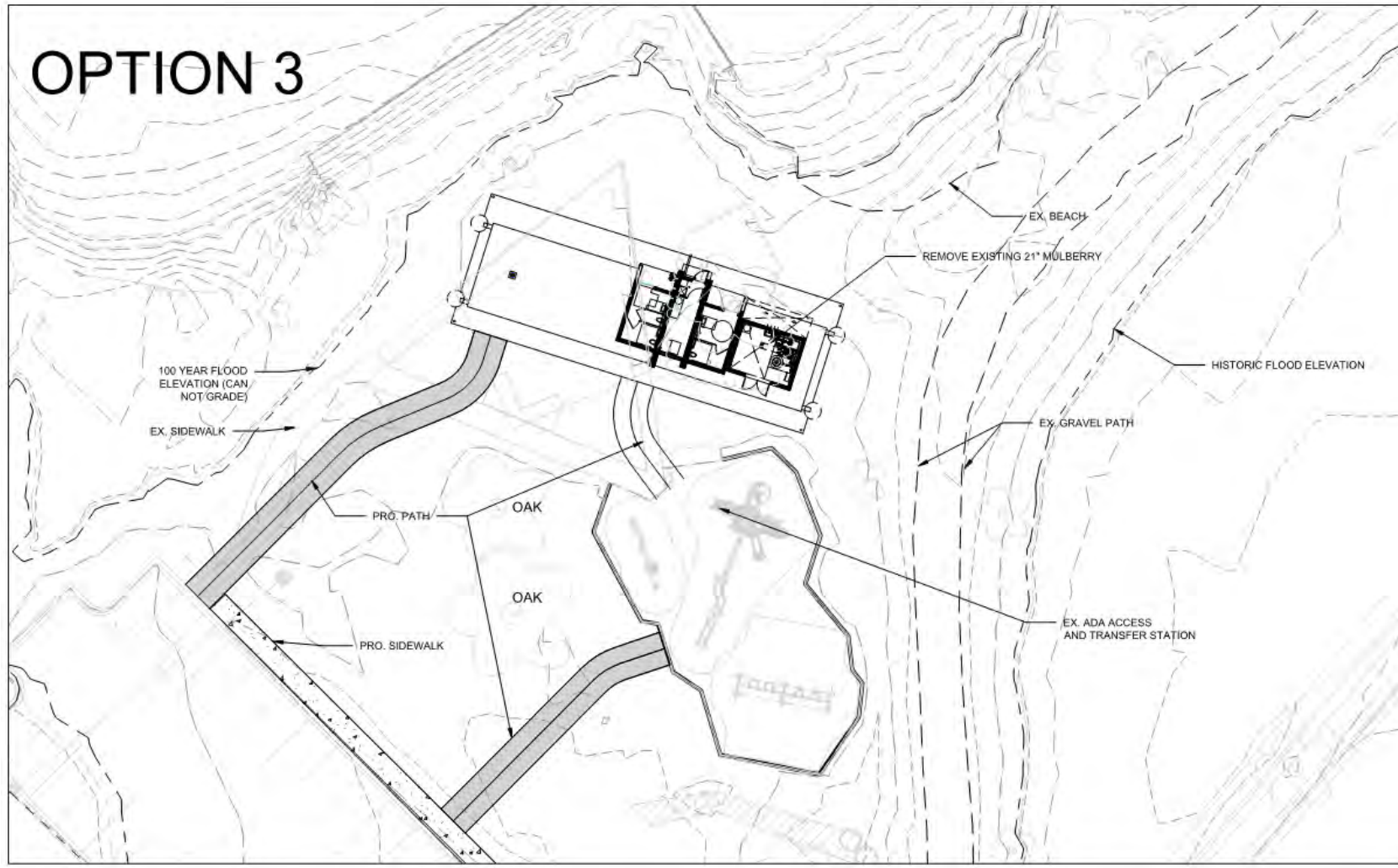
- Placement parallel with seawall
- Pump room too far for efficiency per Dane Co.
- Seating faces beach
- Grade is slightly steeper
- Farther from playground
- If flipped the shelter seating does not face beach

Site Plan - Considerations



- Placement similar to ariel image of 1913 boathouse
- Pump room location is most efficient per Dane Co.
- Seating faces playground and water, angle allows visibility to beach
- Grade is less steep
- Presented 2-16-2021 to neighborhood with no objections

Site Plan - Considerations



- Pump room location is very efficient per Dane Co.
- Seating faces beach, lake, with some visibility to playground
- Grade is slightly steep to flood elevation mark

PROPOSED BEACH SHELTER – Option 1 location



Note: all lighting
is under canopy
recessed lighting
meeting dark
sky compliance

PROPOSED BEACH SHELTER CERTIFICATE OF APPROPRIATENESS (Secretary of the Interior's Standards)

- Structure supports the greater Public Interest
- Use is appropriate and unchanged since origin of Park
- Location of new shelter is similar
- Structure supports and retains the historic character of the site
- Horizontal Form is similar to the original bathhouse
- The size and scale are sensitive to the historic site.
- New shelter components that relate to 1909 restroom
 - Modern materials (concrete similar to 1909 restroom)
 - Upper windows for daylighting (similar to 1909 restroom)
- Appropriate Materials
 - Smooth Fiber Cement
 - Stone selection similar to park
 - Concrete aggregate



TENNEY BEACH SHELTER - Stone in the park

1929 limestone

Vetter Stone, ashlar
machine cut edges



Vetter Stone
Too orange



Kasota Stone

TENNEY BEACH SHELTER - Stone in the park



Kasota Stone Large ashlar pattern with flush mortar joints, slightly raked back, rock-face with natural split edges

TENNEY BEACH SHELTER MATERIAL - Option 1

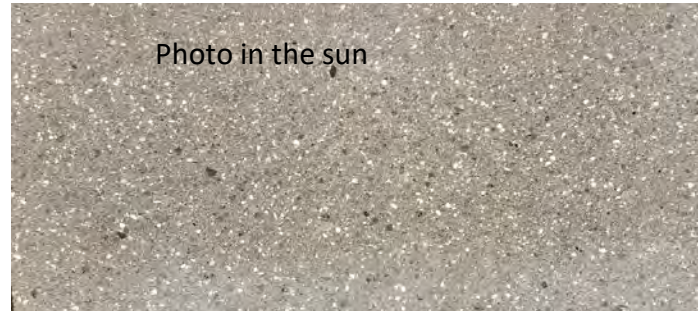
Kasota Stone

Large ashlar pattern with flush mortar joints, slightly racked back, rock-face with natural split edges



Tarrytown Green
HC-134

James Hardie Smooth
6" Exposer lap siding



Ultra - Burnished Masonry Unit
Color – Twilight (Warner)



Image of 1909 Restroom Cement Texture
Original paint color - Benjamin Moore
Tarrytown Green

Tarrytown Green – Option 1



TENNEY BEACH SHELTER MATERIAL - Recommended

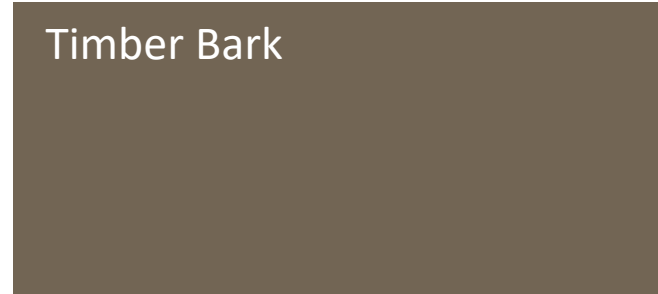
Kasota Stone

Large ashlar pattern with flush mortar joints, slightly racked back, rock-face with natural split edges

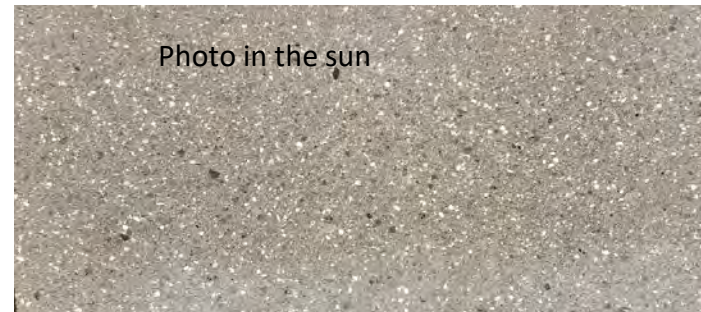


This scheme is recommended. The stone is reminiscent of the park and the natural color of the siding compliments the beach and park setting.

Timber Bark



James Hardie Smooth 6" Exposer lap siding



Ultra - Burnished Masonry Unit Color – Twilight (Warner)



Image of 1909 Restroom Cement Texture
Original paint color -Benjamin Moore
Tarrytown Green

Timber Bark - Recommended



The stone is reminiscent of the park and the natural color of the siding compliments the beach and park setting.

Thank You – Discussion

play
**MADISON
PARKS**

