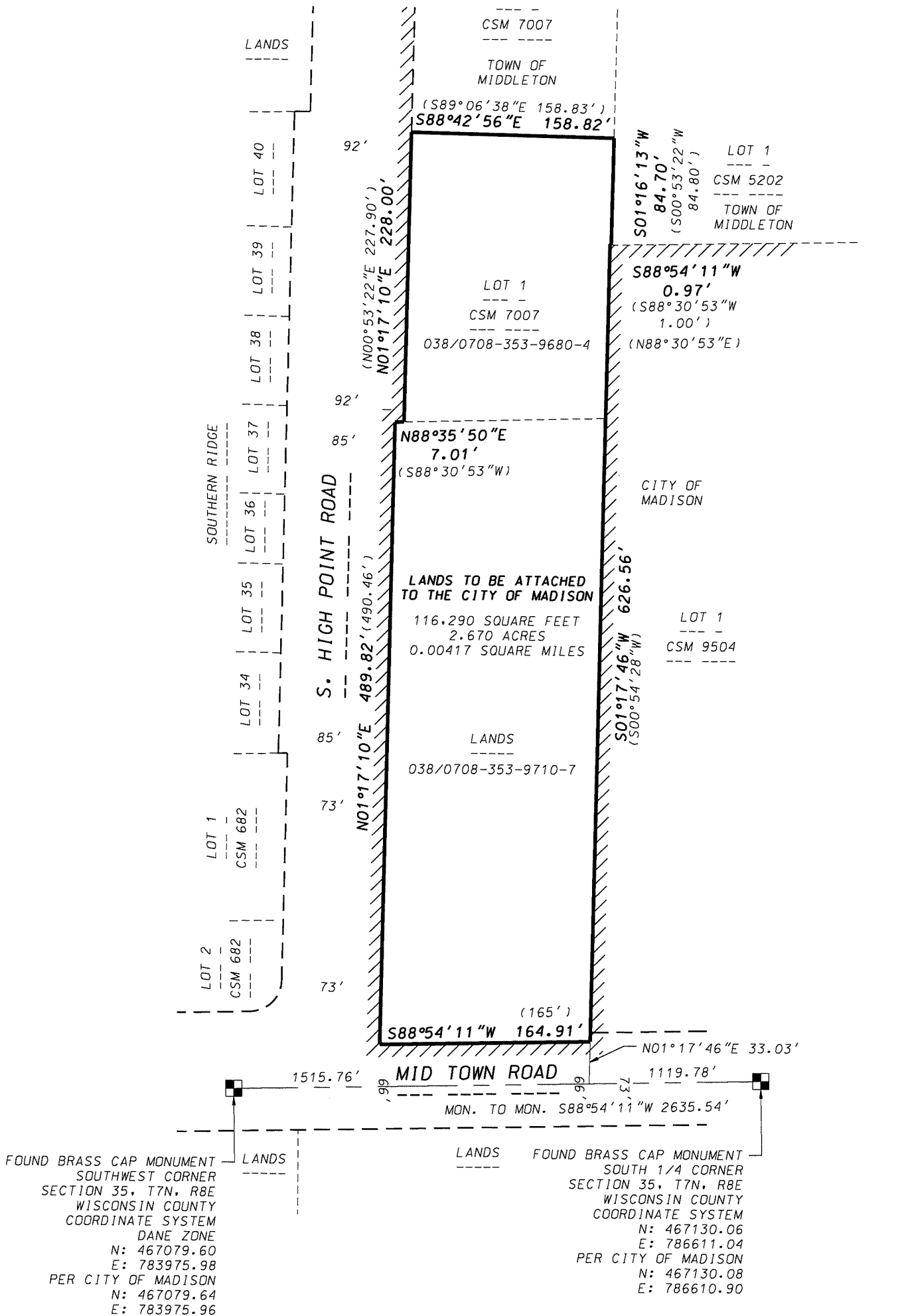


EXHIBIT "II"

MAP OF LANDS TO BE ATTACHED TO THE CITY OF MADISON

SCALE MAP

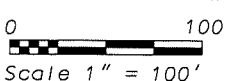


FOUND BRASS CAP MONUMENT
SOUTHWEST CORNER
SECTION 35, T7N, R8E
WISCONSIN COUNTY
COORDINATE SYSTEM
DANE ZONE
N: 467079.60
E: 783975.98
PER CITY OF MADISON
N: 467079.64
E: 783975.96

FOUND BRASS CAP MONUMENT
SOUTH 1/4 CORNER
SECTION 35, T7N, R8E
WISCONSIN COUNTY
COORDINATE SYSTEM
N: 467130.06
E: 786611.04
PER CITY OF MADISON
N: 467130.08
E: 786610.90



GRID NORTH
WISCONSIN COUNTY COORDINATE
SYSTEM (DANE ZONE)
THE SOUTH LINE OF THE SW1/4
OF SECTION 35, T7N, R8E
BEARS S88°54'11"W



LEGEND
() RECORDED AS INFORMATION
EXISTING CORPORATE LIMITS
OF THE CITY OF MADISON

D'ONOFRIO KOTTKE AND ASSOCIATES, INC.
7530 Westward Way, Madison, WI 53717
Phone: 608.833.7530 • Fax: 608.833.1089
YOUR NATURAL RESOURCE FOR LAND DEVELOPMENT

DATE: February 22, 2021
F.N.: 19-05-124