

## PROJECT SCOPE – TENNEY PARK BEACH SHELTER

- New Beach Shelter Fall 2021 Construction Start
- New Beach Enclosure for Summer 2022



## TENNEY PARK

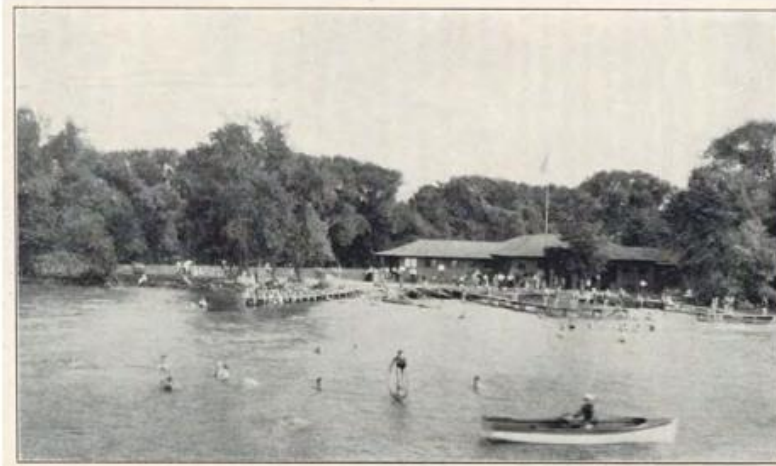
*play*  
**MADISON  
PARKS**





## TENNEY PARK BEACH HISTORY

- 1899 – City Council resolution adopted 7/14/1899 provided \$1500 to MPPDA for park development and named Tenney Park for Dr. D. K. Tenney, who provided a matching grant for the park's creation
- 1913 – First bathhouse was constructed to the north of the current structure in a poorly drained area closer to open field area of today



Tenney Park



Removed c. 1978



## TENNEY PARK – Site Structures



1934



AC ZIMMERMAN  
BRIDGE  
A.D. 1929



1929



1912



## TENNEY PARK – Historic Building (Ferry Restroom Building 1909)





## TENNEY PARK – Non-Historic Structure





## TENNEY PARK – Non-Historic Building





## EXISTING BEACH SHELTER CONDITIONS



Non-Historic Structure Completed 1979



## EXISTING CONDITIONS





## EXISTING PARKING & ACCESS CONDITIONS



There will be no work on the Parking Lot. Currently code compliant, completed in 2012.



Scope includes upgrade to the pedestrian path from parking lot to new shelter



## EXISTING PLAYGROUND



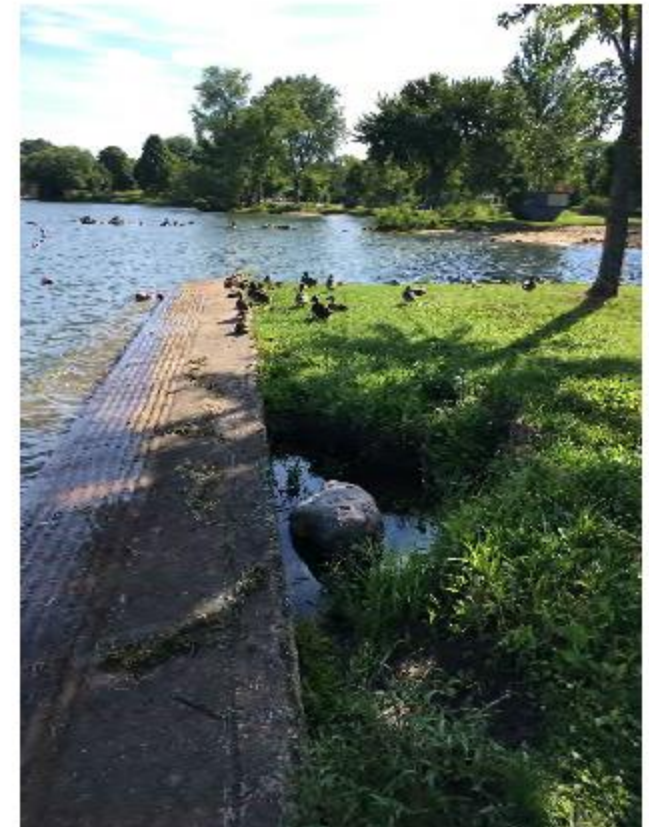
Scope includes Landscape edge work only at existing playground that was completed in 2018.



## EXISTING BEACH AND SHORELINE CONDITIONS

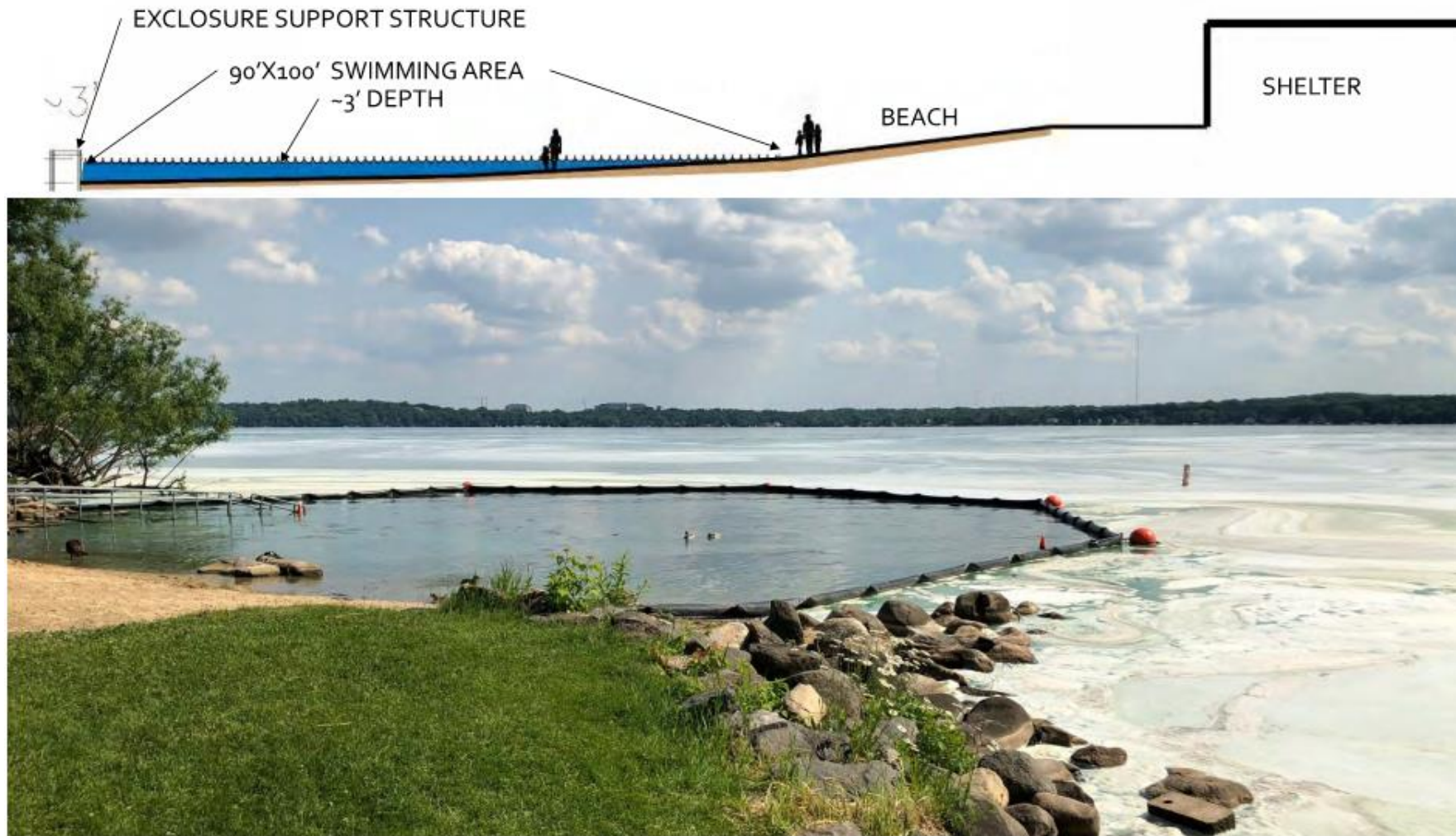


No Shoreline work in this project scope  
Beach will receive Exclosure





## BEACH ENCLOSURE EXAMPLE



The Beach Shelter will include interior space for a pump room to operate the Enclosure Swim System.

Non-permanent structure enhances beach safety



Tell Us About the New Park Shelter Concept!

*play*  
**MADISON  
PARKS**





## SHELTER DESIGN – Lake Edge park





## SHELTER DESIGN MATERIALS





## SHELTER DESIGN – Warner Beach (Under Construction)

*play*  
**MADISON  
PARKS**



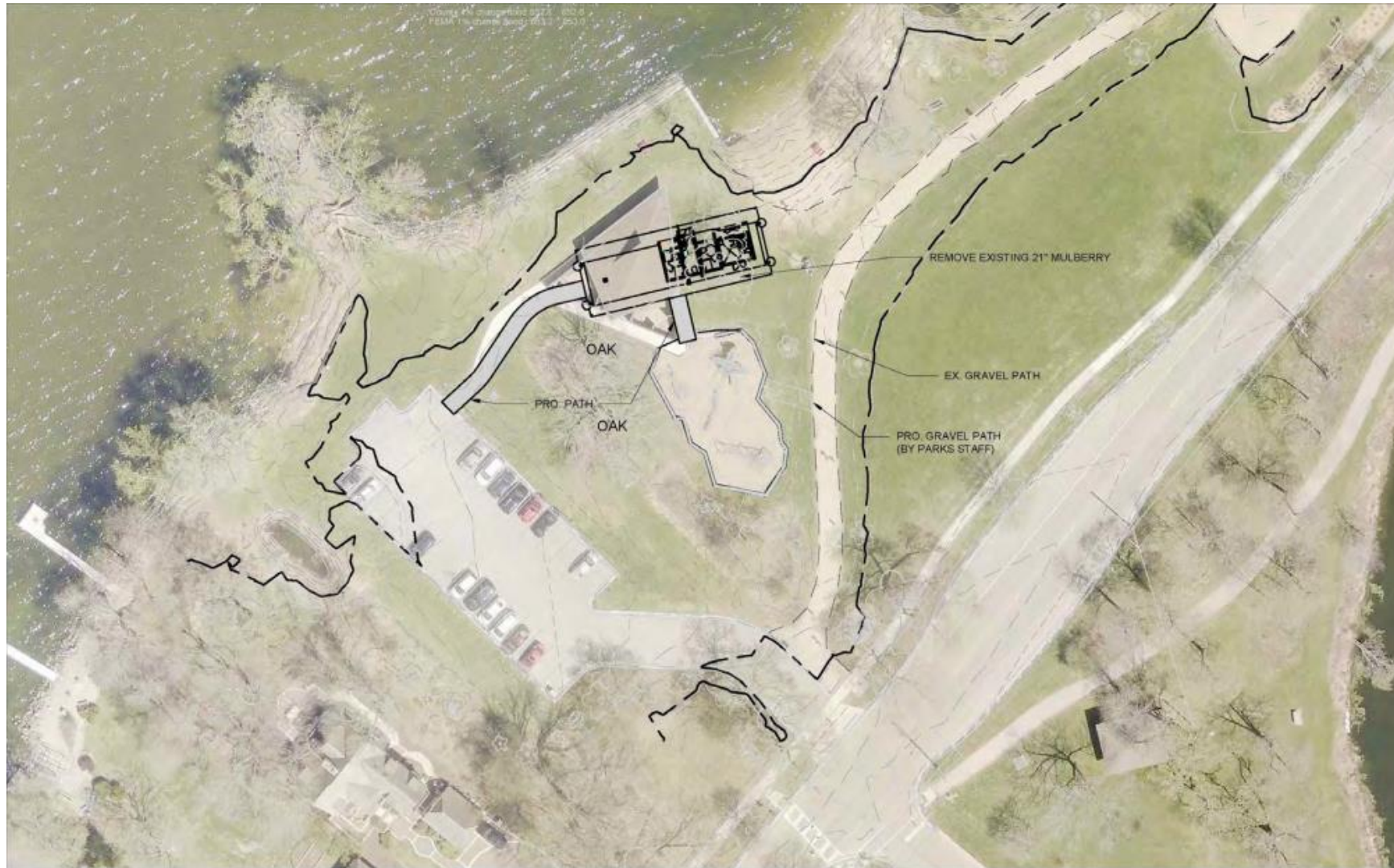


## EXISTING CONDITIONS





## PROPOSED SITE PLAN



The Beach Shelter will include interior space for a pump room to operate the Enclosure Swim System.



## PROPOSED BEACH SHELTER



Note: all lighting  
is under canopy  
recessed lighting  
meeting dark  
sky compliance



## PROPOSED BEACH SHELTER CERTIFICATE OF APPROPRIATENESS (Secretary of the Interior's Standards)

- Structure supports the greater Public Interest
- Use is appropriate and unchanged since origin of Park
- Location of new shelter is similar
- Structure supports and retains the historic character of the site
- Horizontal Form is similar to the original bathhouse
- The size and scale are sensitive to the historic site.
- New shelter components that relate to 1909 restroom
  - Modern materials (concrete similar to 1909 restroom)
  - Upper windows for daylighting (similar to 1909 restroom)
- Appropriate Materials
  - Smooth Fiber Cement
  - Stone selection
  - Concrete aggregate





# TENNEY BEACH SHELTER MATERIAL SUGGESTION OPTION 1

**Option 1** (Parks standard)  
Eden Stone - Windsor, Similar to  
other Shelters and Olbrich Gardens



TIMBER BARK

James Hardie Fiber Cement Siding



**Ultra - Burnished Masonry Unit**  
Color – Twilight (Warner) (Other Shelters were Color Galaxy)



Image of 1909 Restroom Cement Texture

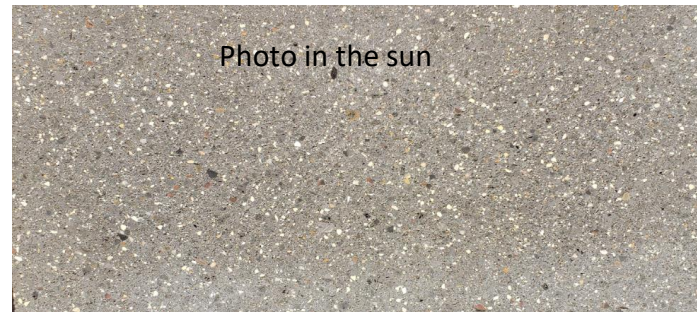


# TENNEY BEACH SHELTER MATERIAL SUGGESTION OPTION 2

**Option 2** Fischer Stone  
Limestone size/stack ashlar  
Similar to early Bridges



James Hardie Smooth – Ship lap  
Color to match trim 1909 Ferry Restroom



Ultra - Burnished Masonry Unit  
Color – Twilight (Warner)



Image of 1909 Restroom Cement Texture



## Thank You – Discussion

