

SOUTH ELEVATION - BUILDING NO. 1

TYPICAL EXPOSURE ALL BUILDINGS SCALE: 1/4" = 1'-0"

GORMAN & COMPANY INC.
 REAL ESTATE DEVELOPMENT AND MANAGEMENT
 1244 S. PARK ST. MADISON, WI 53715
 (608)757-8778 direct (608)757-4410 Ext. 310 fax (608)757-9662

"CROSSWINDS"
 AT HAWKS LANDING
 CONDOMINIUMS - 16-UNIT
 CITY OF MADISON, WISCONSIN

Drawn: JK
 Checked: SR

Date: 10-13-00

Revisions:

Project No.
 0009096
 Sheet No.
 A10
 Of 40 Sheets



EAST ELEVATION - BUILDING NO. 1

SCALE: 1/4" = 1'-0"

GORMAN
COMPANY, INC.

REAL ESTATE DEVELOPMENT AND MANAGEMENT
1244 S. PARK ST. MADISON, WI 53715
(608)257-8778 Direct (608)257-4410 Ext. 310 Fax: (608)257-9802

"CROSSWINDS"
AT HAWKS LANDING
CONDOMINIUMS - 16-UNIT
CITY OF MADISON, WISCONSIN

Drawn: *JK*

Checked: *SRB*

Date: 10-13-00

Revisions:

Project No.

0009096

Sheet No.

A11

Of 40 Sheets



WEST ELEVATION - BUILDING NO. 1

TYPICAL EXPOSURE FOR WEST SIDE OF ALL BUILDINGS

SCALE: 1/4" = 1'-0"

GORMAN
COMPANY, INC.

REAL ESTATE DEVELOPMENT AND MANAGEMENT
1244 S. PARK ST. MADISON, WI 53715
(608) 278-4444 FAX: (608) 278-8800

"CROSSWINDS"
AT HAWKS LANDING
CONDOMINIUMS - 16-UNIT
CITY OF MADISON, WISCONSIN

Drawn: JK

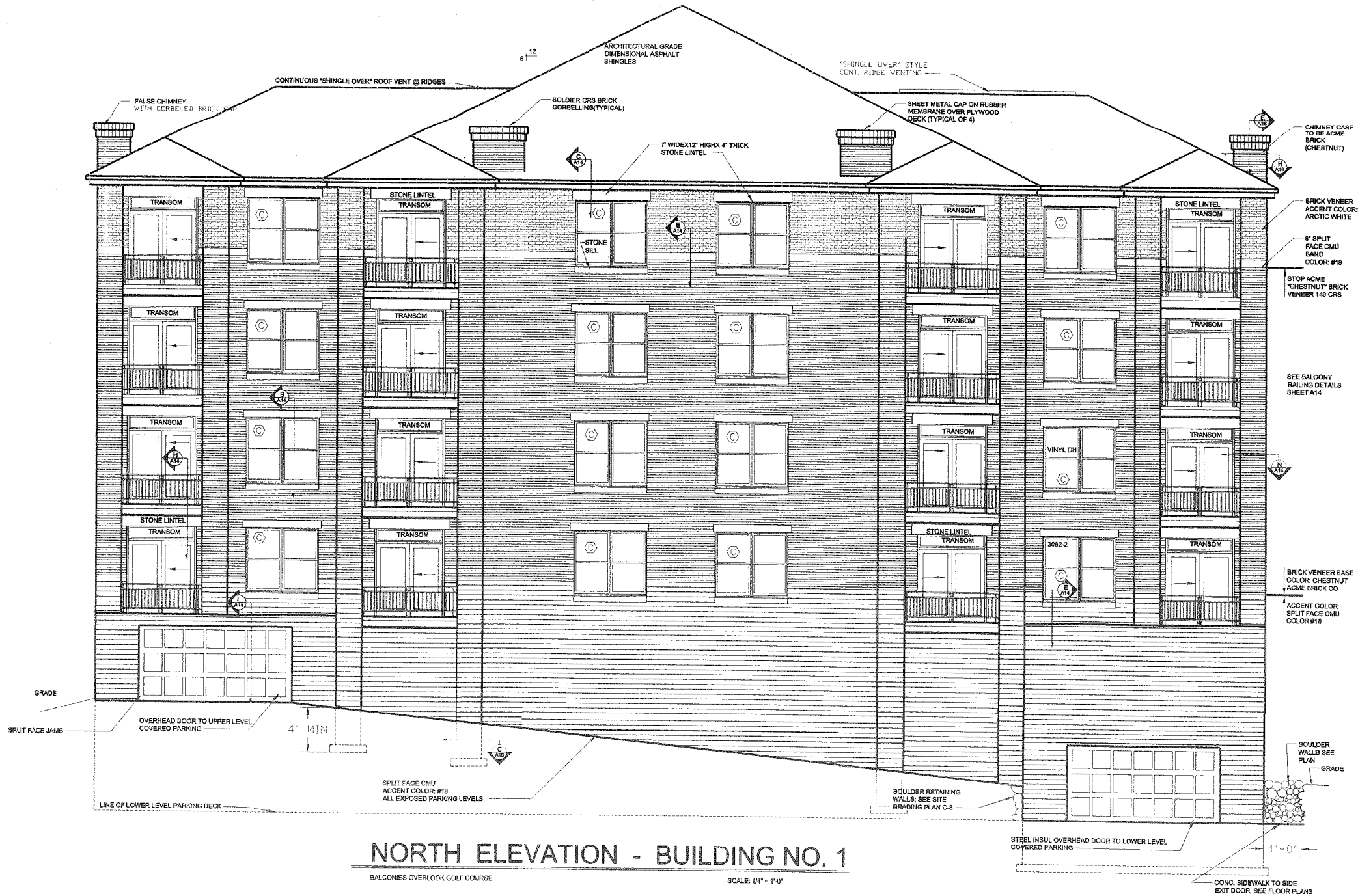
Checked: SRS

Date: 10/15/07

Revisions:

Project No.
0009096

Sheet No.
A12
Of 40 Sheets



NORTH ELEVATION - BUILDING NO. 1

BALCONIES OVERLOOK GOLF COURSE

SCALE: 1/4" = 1'-0"

GORMAN
 & COMPANY, INC.
 REAL ESTATE DEVELOPMENT AND MANAGEMENT
 1244 S. PARK ST. MADISON, WI 53715
 (608)257-8778 Fax: (608)257-9002

"CROSSWINDS"
 AT HAWKS LANDING
 CONDOMINIUMS - 16-UNIT
 CITY OF MADISON, WISCONSIN

Drawn: *[Signature]*

Checked: SRS

Date: 10-13-00

Revisions:

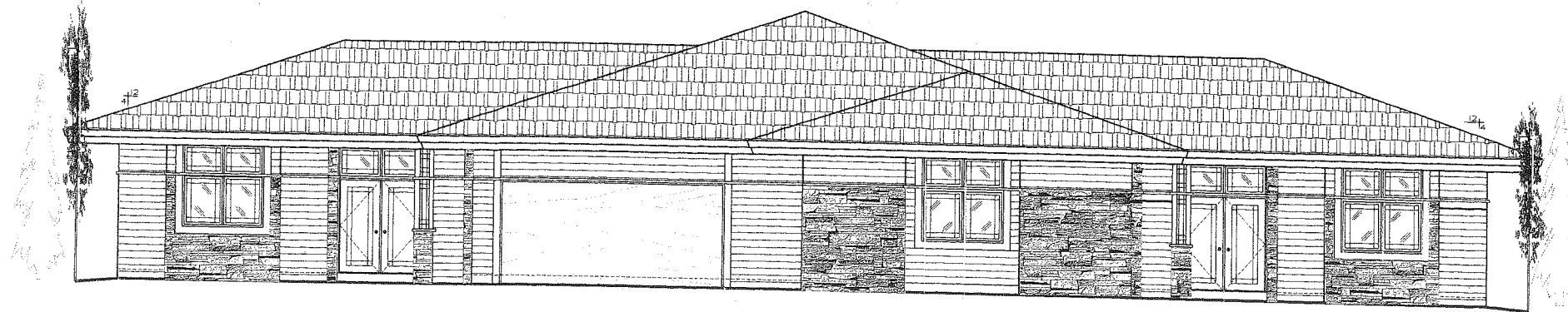
Project No.
0009096

Sheet No.
A13
Of 40 Sheets

CROSSWINDS CONDOMINIUMS

AT HAWK'S LANDING

MIDTOWN ROAD AT HAWK'S LANDING CIRCLE, MADISON, WISCONSIN



FRONT ELEVATION

SCALE: 1/8" = 1'-0"



REAR ELEVATION - WALK-OUT BUILDING

SCALE: 1/4" = 1'-0"

C:\projects\1999\9911063A\1.dwg Thu Apr 20 13:07:02 2000

GORMAN
CONSTRUCTION

REAL ESTATE DEVELOPMENT AND MANAGEMENT
 1244 S. PARK ST. MADISON, WI 53715
 (608)251-8770 direct (608)251-4410 Ext. 310 fax (608)251-9002

"CROSSWINDS"
 AT HAWK'S LANDING
 CONDOMINIUMS - DUPL
 CITY OF MADISON, WISC

Drawn: DMD

Checked: SRS

TITLE
 PAGE

Date: 2-25-00

Revisions:
 01 SIDING #
 02 ROOF HEIGHT
 03 MISC. PLAN CHANGES
 04 MISC. PLAN CHANGES

Project No.
 9911063A

Sheet No.

T I
 of 20 sheets

Drawn: DMD

Checked: SRS

FRONT &
 REAR
 ELEVATIONS

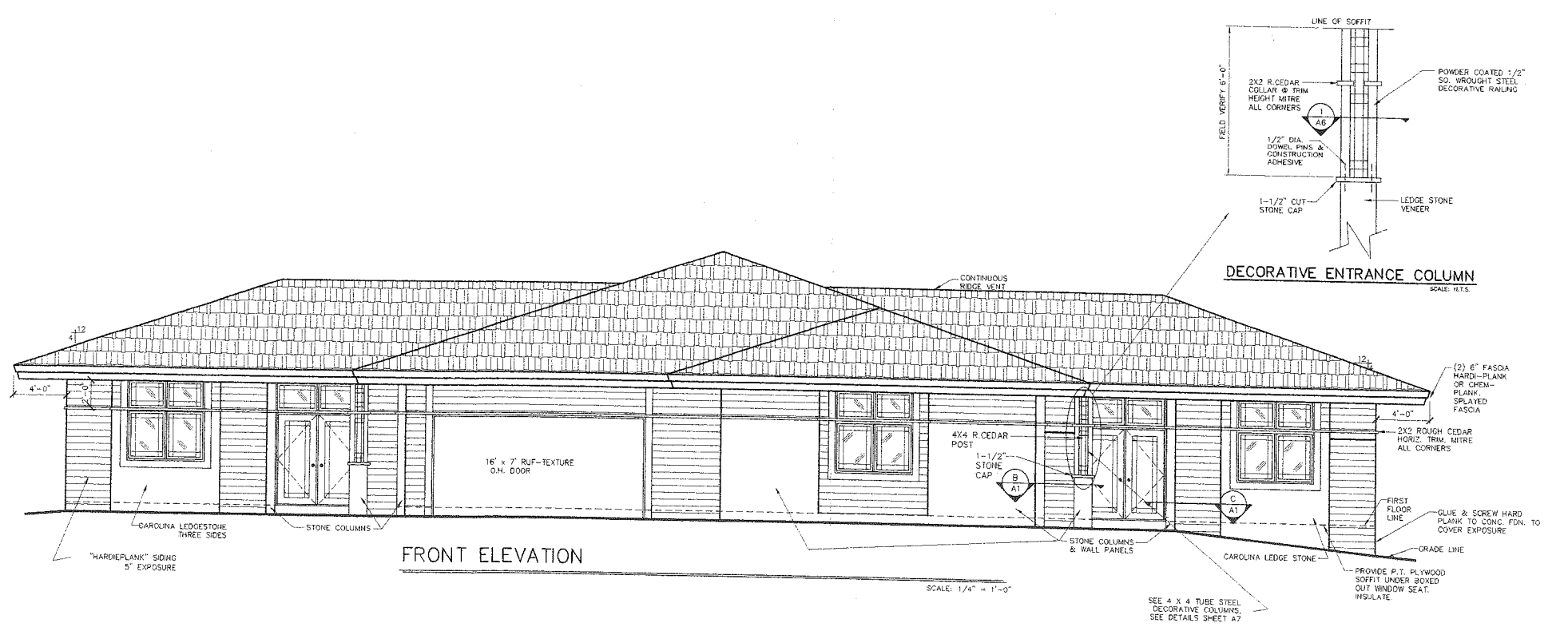
Date: 2-25-00

Revisions:	
01	SIDING & ROOF HEIGHT
02	MISC. NOTES

Project No.
 9911063A

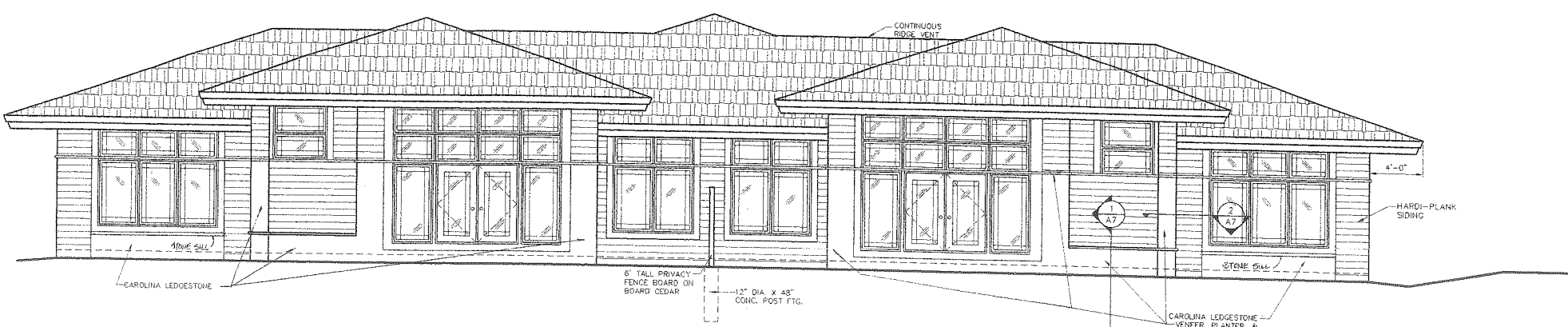
Sheet No.

A6
 Of 20 Sheets



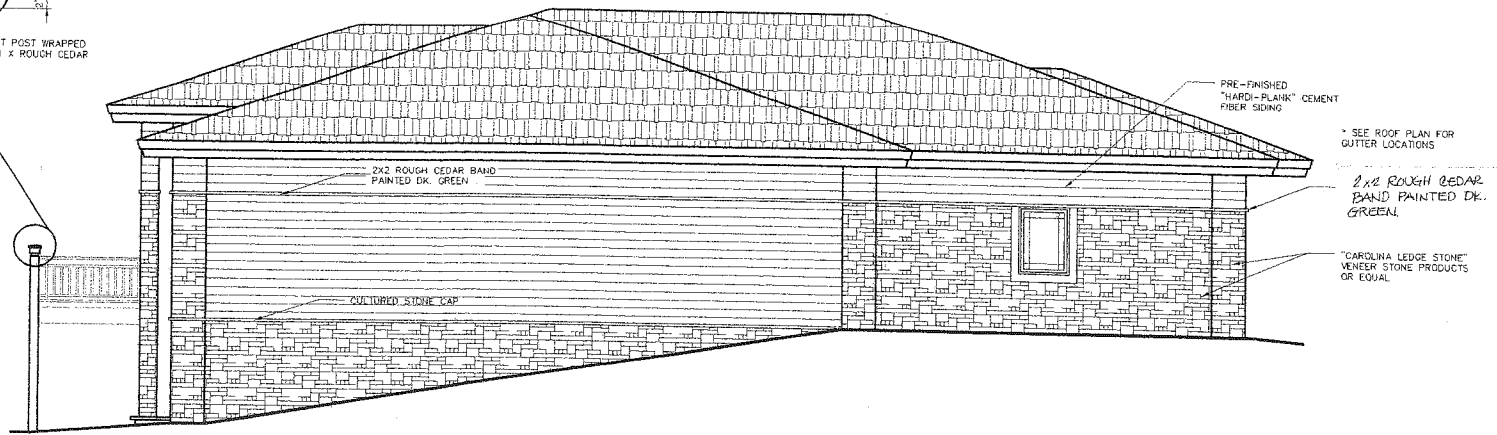
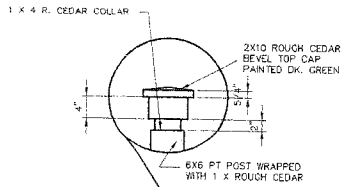
FRONT ELEVATION

SCALE: 1/4" = 1'-0"



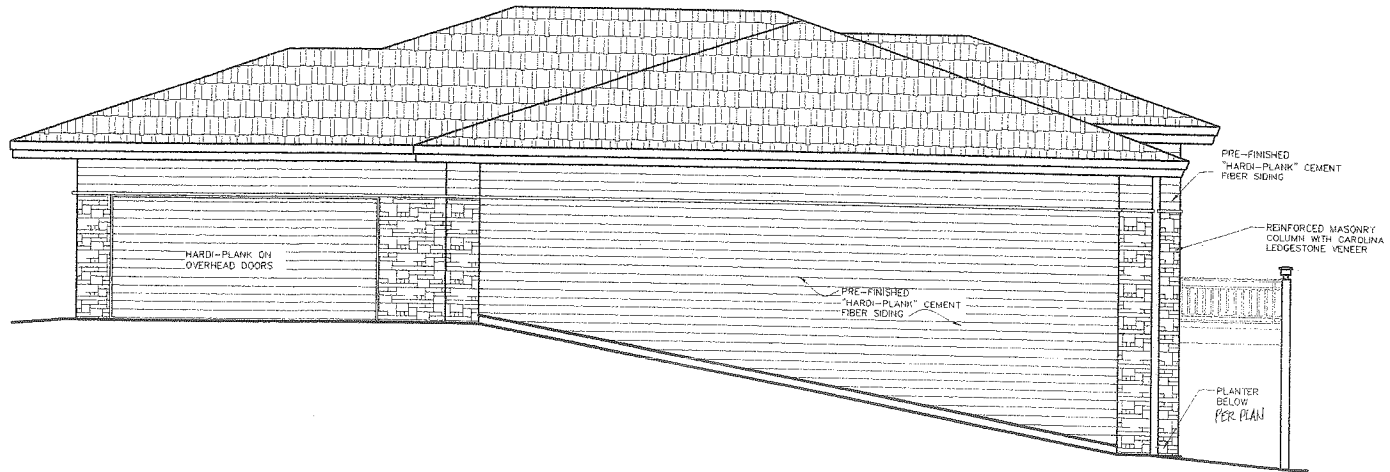
REAR ELEVATION - NON-EXPOSED

SCALE: 1/4" = 1'-0"



LEFT SIDE ELEVATION

SCALE: 1/4" = 1'-0"



RIGHT SIDE ELEVATION

SCALE: 1/4" = 1'-0"

"CROSSWINDS"
 AT HAWKS LANDING
 CONDOMINIUMS - DUPLEX
 CITY OF MADISON, WI

Drawn: DMD

Checked: SRS

LEFT &
 RIGHT
 ELEVATIONS

Date: 2-25-09

Revisions:

1	SIDING & ROOF HEIGHT

Project No.
 9911063A

Sheet No.
A8
 Of 20 Sheets