



Site Location

1825 & 1837 Aberg Ave



Site Context

1825 & 1837 Aberg Ave



knothe • bruce
ARCHITECTS

knothebruce.com 608.836.3890
7601 University Ave. • Suite 201 • Middleton, WI 53562

KEY PLAN

ISSUED
Issued for Land Use - May 20, 2020

PROJECT TITLE
ABERG
AVENUE
HOUSING
DEVELOPMENT

1825 & 1837
ABERG AVE
MADISON, WI

SHEET TITLE
EXTERIOR
ELEVATION
COLOR

SHEET NUMBER

A-2.4

PROJECT NUMBER 1974

© Knothe & Bruce Architects, LLC



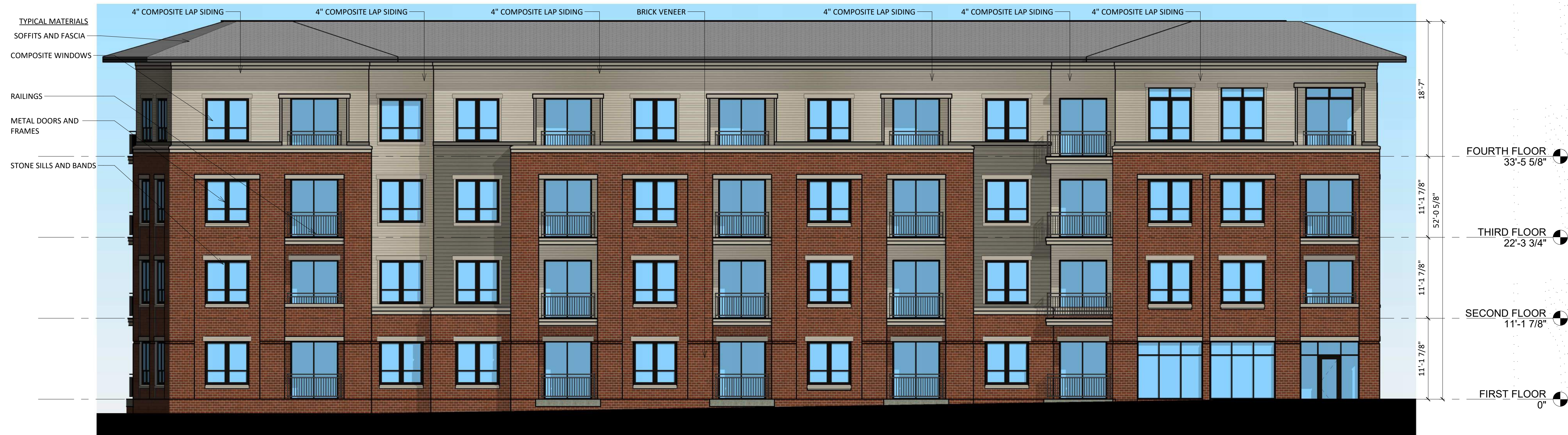
NORTH ELEVATION - COLOR



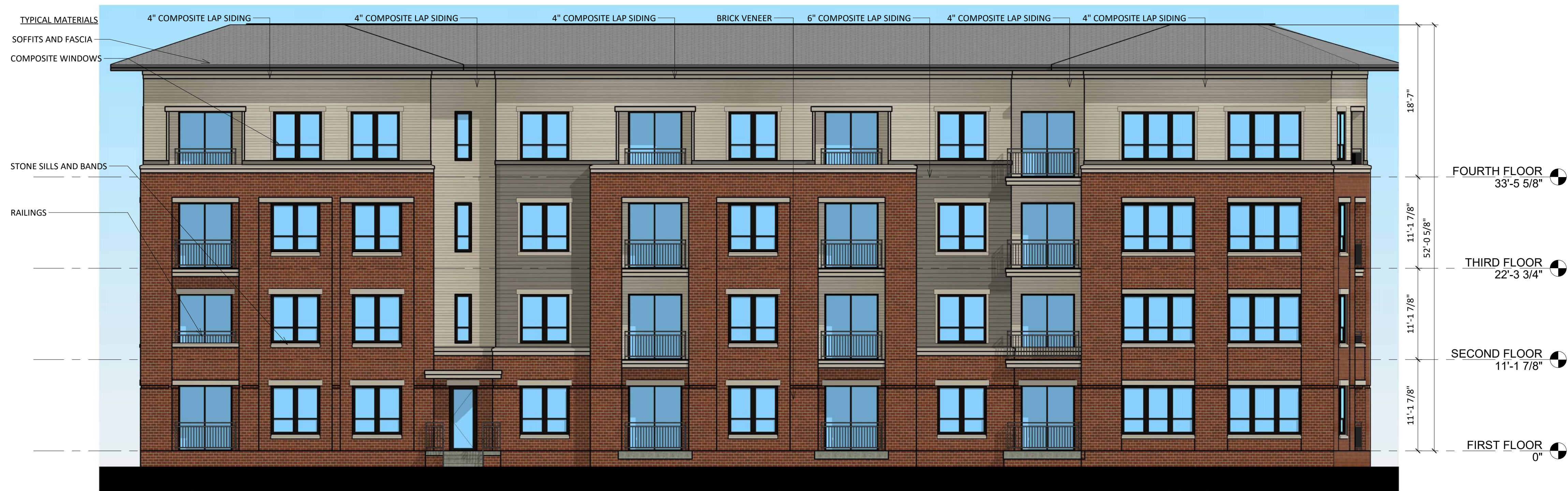
EAST ELEVATION - COLOR

Original

EXTERIOR MATERIAL SCHEDULE		
BUILDING ELEMENT	MANUFACTURER	COLOR
4" COMPOSITE LAP SIDING - (#1)	JAMES HARDIE	NAVAJO BEIGE
6" COMPOSITE LAP SIDING - (#2)	JAMES HARDIE	AGED PEWTER
COMPOSITE TRIM	JAMES HARDIE	NAVAJO BEIGE
BRICK VENEER	ACME BRICK	GARNET - VELOUR TEXTURE
COMPOSITE WINDOWS	ANDERSON	TAN
ALUM. STOREFRONT	N/A	BLACK
METAL DOORS/FRAMES	N/A	NAVAJO BIEGE
STONE SILLS & BANDS	EDWARDS	COLOR TO MATCH COMPOSITE TRIM
SOFFITS & FASCIA	N/A	NAVAJO BEIGE
RAILINGS	SUPERIOR	BLACK



1 NORTH ELEVATION - COLOR
A-2.4 1/8" = 1'-0"



2 EAST ELEVATION - COLOR
A-2.4 1/8" = 1'-0"

Proposed

EXTERIOR MATERIAL SCHEDULE		
BUILDING ELEMENT	MANUFACTURER	COLOR
4" COMPOSITE LAP SIDING - (#1)	JAMES HARDIE	NAVAJO BEIGE
6" COMPOSITE LAP SIDING - (#2)	JAMES HARDIE	AGED PEWTER
COMPOSITE TRIM	JAMES HARDIE	NAVAJO BEIGE
BRICK VENEER	ACME BRICK	GARNET - VELOUR TEXTURE
COMPOSITE WINDOWS	ANDERSON	TAN
ALUM. STOREFRONT	N/A	BLACK
METAL DOORS/FRAMES	N/A	NAVAJO BIEGE
STONE SILLS & BANDS	EDWARDS	COLOR TO MATCH COMPOSITE TRIM
SOFFITS & FASCIA	N/A	NAVAJO BEIGE
RAILINGS	SUPERIOR	BLACK



2 SOUTH WEST ELEVATION - COLOR
A-2.5 1/8" = 1'-0"



4 WEST ELEVATION - COLOR
A-2.5 1/8" = 1'-0"



1 SOUTH EAST ELEVATION - COLOR
A-2.5 1/8" = 1'-0"



3 SOUTH ELEVATION - COLOR
A-2.5 1/8" = 1'-0"

Original

EXTERIOR MATERIAL SCHEDULE		
BUILDING ELEMENT	MANUFACTURER	COLOR
4" COMPOSITE LAP SIDING - (#1)	JAMES HARDIE	NAVAJO BEIGE
6" COMPOSITE LAP SIDING - (#2)	JAMES HARDIE	AGED PEWTER
COMPOSITE TRIM	JAMES HARDIE	NAVAJO BEIGE
BRICK VENEER	ACME BRICK	GARNET - VELOUR TEXTURE
COMPOSITE WINDOWS	ANDERSON	TAN
ALUM. STOREFRONT	N/A	BLACK
METAL DOORS/FRAMES	N/A	NAVAJO BIEGE
STONE SILLS & BANDS	EDWARDS	COLOR TO MATCH COMPOSITE TRIM
SOFFITS & FASCIA	N/A	NAVAJO BEIGE
RAILINGS	SUPERIOR	BLACK



2 SOUTH WEST ELEVATION - COLOR
A-2.5 1/8" = 1'-0"



4 WEST ELEVATION - COLOR
A-2.5 1/8" = 1'-0"



1 SOUTH EAST ELEVATION - COLOR
A-2.5 1/8" = 1'-0"



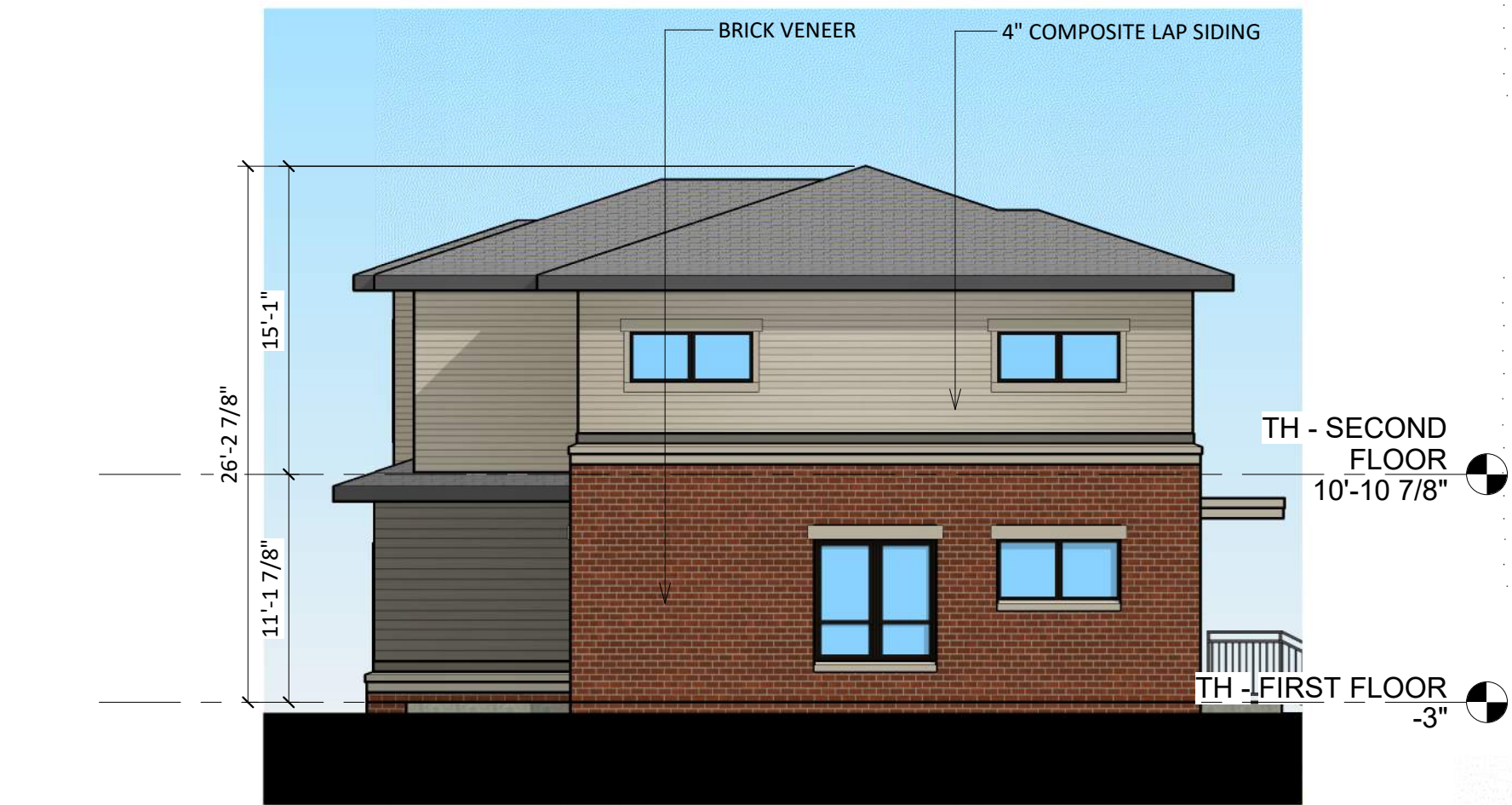
3 SOUTH ELEVATION - COLOR
A-2.5 1/8" = 1'-0"

Proposed

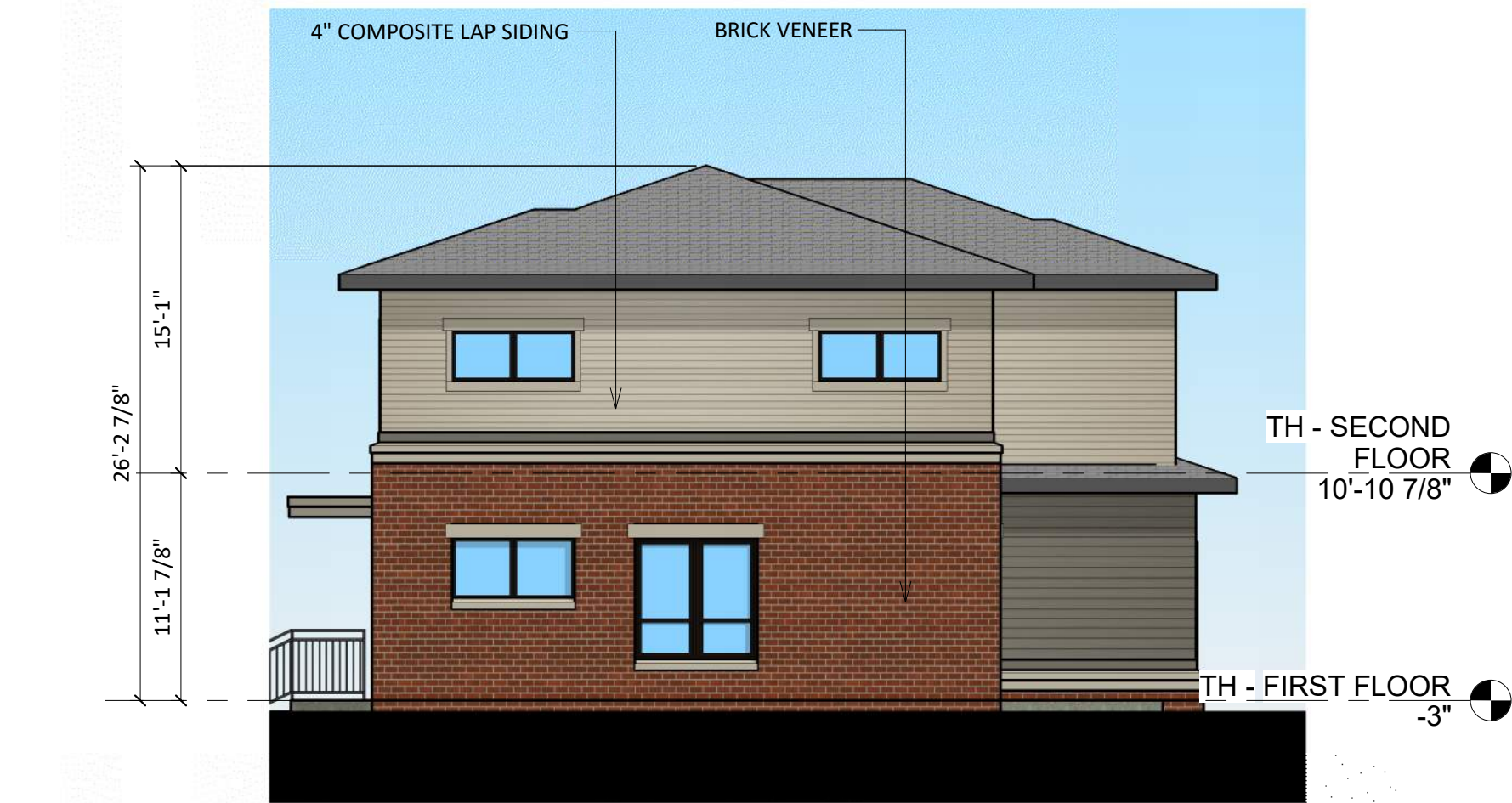
EXTERIOR MATERIAL SCHEDULE		
BUILDING ELEMENT	MANUFACTURER	COLOR
4" COMPOSITE LAP SIDING - (#1)	JAMES HARDIE	NAVAJO BEIGE
6" COMPOSITE LAP SIDING - (#2)	JAMES HARDIE	AGED PEWTER
COMPOSITE TRIM	JAMES HARDIE	NAVAJO BEIGE
BRICK VENEER	ACME BRICK	GARNET - VELOUR TEXTURE
COMPOSITE WINDOWS	ANDERSON	TAN
ALUM. STOREFRONT	N/A	BLACK
METAL DOORS/FRAMES	N/A	NAVAJO BIEGE
STONE SILLS & BANDS	EDWARDS	COLOR TO MATCH COMPOSITE TRIM
SOFFITS & FASCIA	N/A	NAVAJO BEIGE
RAILINGS	SUPERIOR	BLACK



1 TH - WEST ELEVATION - COLOR
1/8" = 1'-0"



2 TH - SOUTH ELEVATION - COLOR
1/8" = 1'-0"



3 TH - NORTH ELEVATION - COLOR
1/8" = 1'-0"



4 TH - EAST ELEVATION - COLOR
1/8" = 1'-0"

EXTERIOR MATERIAL SCHEDULE		
BUILDING ELEMENT	MANUFACTURER	COLOR
4" COMPOSITE LAP SIDING - (#1)	JAMES HARDIE	NAVAJO BEIGE
6" COMPOSITE LAP SIDING - (#2)	JAMES HARDIE	AGED PEWTER
COMPOSITE TRIM	JAMES HARDIE	NAVAJO BEIGE
BRICK VENEER	ACME BRICK	GARNET - VELOUR TEXTURE
COMPOSITE WINDOWS	ANDERSON	TAN
ALUM. STOREFRONT	N/A	BLACK
METAL DOORS/FRAMES	N/A	NAVAJO BIEGE
STONE SILLS & BANDS	EDWARDS	COLOR TO MATCH COMPOSITE TRIM
SOFFITS & FASCIA	N/A	NAVAJO BEIGE
RAILINGS	SUPERIOR	BLACK



knothe • bruce
ARCHITECTS
knothebruce.com 608.836.3890
7601 University Ave. • Suite 201 • Middleton, WI 53562

KEY PLAN

ISSUED
Issued for Land Use - May 20, 2020

PROJECT TITLE
ABERG
AVENUE
HOUSING
DEVELOPMENT

1825 & 1837
ABERG AVE
MADISON, WI

SHEET TITLE
EXTERIOR
ELEVATIONS
COLOR

SHEET NUMBER

A-2.6

PROJECT NUMBER 1974

© Knothe & Bruce Architects, LLC



Aberg Avenue
Housing Development
1825&1837 Aberg Ave. Madison WI
EXTERIOR RENDERED PERSPECTIVE





Original

Aberg Avenue
Housing Development
1825&1837 Aberg Ave. Madison WI
EXTERIOR RENDERED PERSPECTIVE





Proposed

Aberg Avenue
Housing Development
1825&1837 Aberg Ave. Madison WI
EXTERIOR RENDERED PERSPECTIVE



Original



Aberg Avenue
Housing Development
1825&1837 Aberg Ave. Madison WI
EXTERIOR RENDERED PERSPECTIVE

Proposed



Aberg Avenue
Housing Development
1825&1837 Aberg Ave. Madison WI
EXTERIOR RENDERED PERSPECTIVE



Original

Aberg Avenue
Housing Development
1825&1837 Aberg Ave. Madison WI
EXTERIOR RENDERED PERSPECTIVE





Proposed

Aberg Avenue
Housing Development
1825&1837 Aberg Ave. Madison WI
EXTERIOR RENDERED PERSPECTIVE

