

MARK	REVISION	DATE	BY
#1	REVISION 1	4-2-19	LML
Designed By: LML	Date: #####	Scale: #####	12345

12345  
 #####  
 CONTRACT NO: 987654

DEMETRAL PARK PATH: PHASE 2  
 SPECTRUM UTILITY POTHOLE LOCATIONS  
 M:\DESIGN\Projects\11515\CAD\Streets\11515EN-Street.dwg



11515

E JOHNSON ST

N FIRST ST

EXISTING 8' ASPHALT  
MULTI-USE PATH

TRANSITION TO 8' CONCRETE  
MULTI-USE PATH

10' CONCRETE  
MULTI-USE PATH

071006309019  
CITY OF MADISON ENGINEER  
WALKWAYS & BIKEPATHS 536  
217 N First St

CONCRETE PAD FOR BIKE  
MAINTENANCE STATION  
(+ BCYCLE STATION?)

071006309027  
SWANSON, ERIK V  
EMILY V SWANSON  
213 N First St

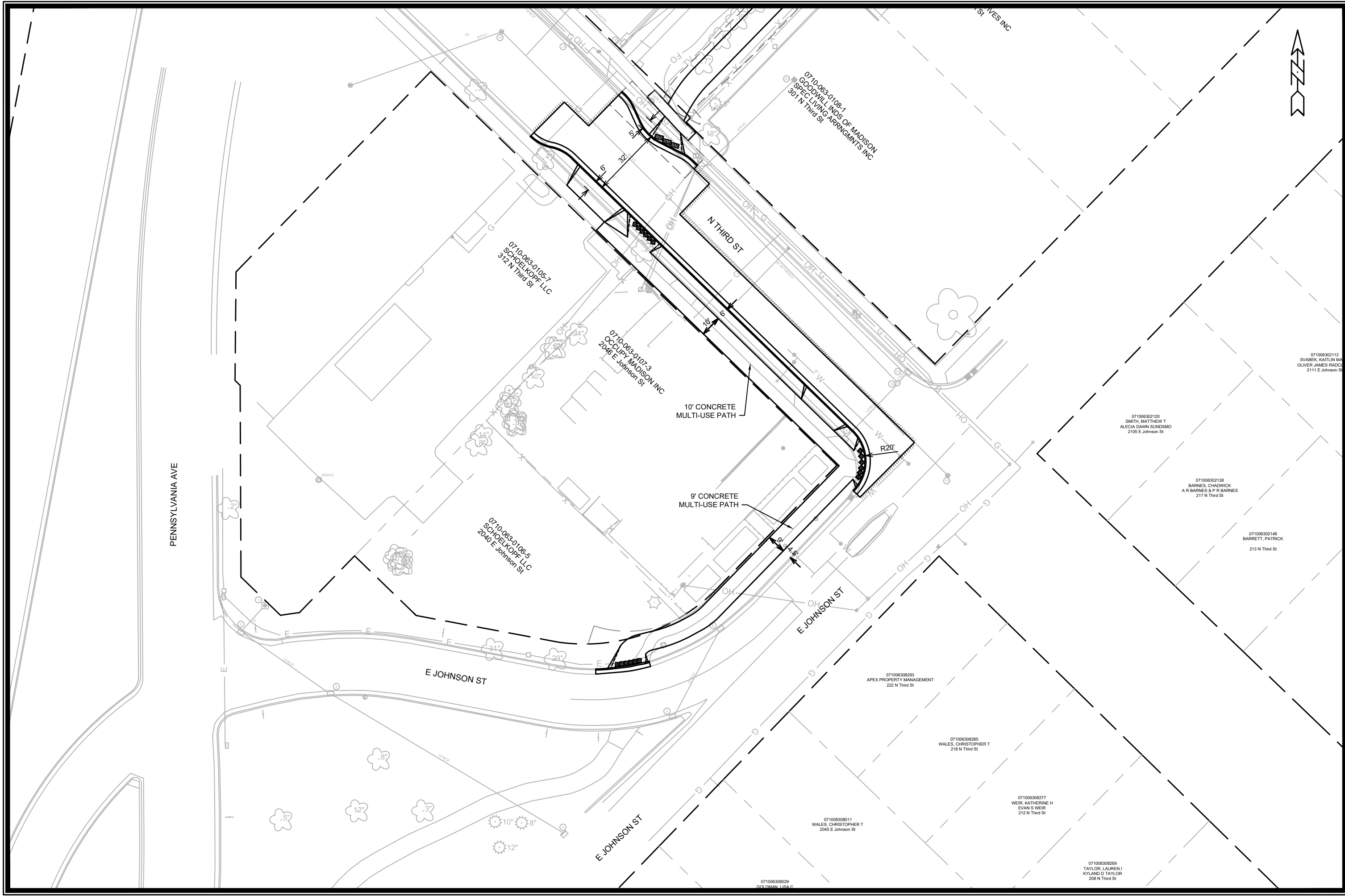
EXISTING 10' CONCRETE  
MULTI-USE PATH

071006309035  
CITADEL DEVELOPMENT INC  
209 N First St

071006309043  
HARLAN, LLC  
207 N First St

071006  
AVERY,  
& TERESS  
1914 E D

071006309069  
REED, SCOTT A  
LAURA E BIRKELAND  
1910 E Dayton St



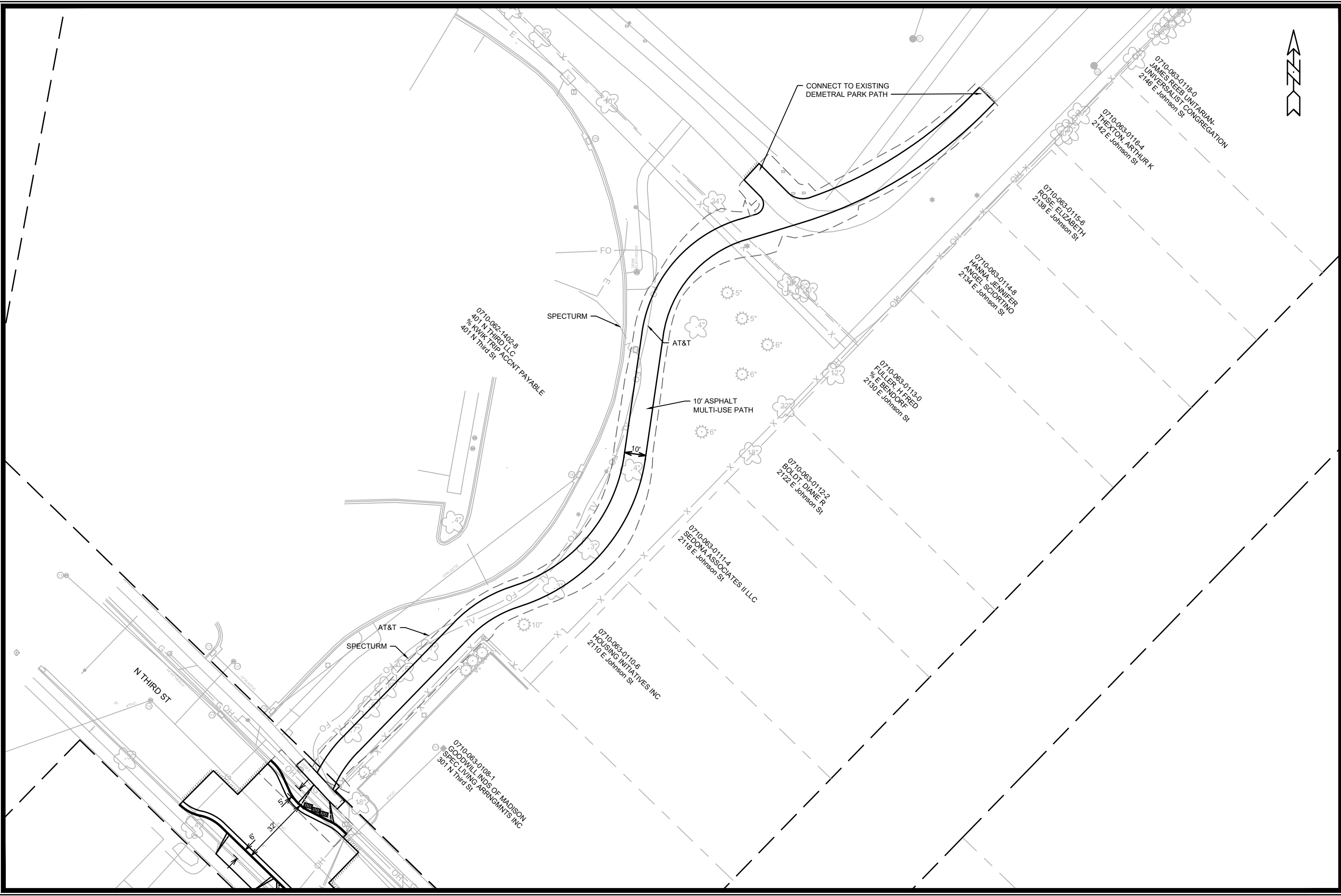
DESIGNED BY	LMU	DATE	4-2-19
REVISION	REVISION	DATE	
BY			
Scale:	#####	Date:	#####
Designed By:	LMU	Date:	12345

12345  
 #####  
 987654  
 CONTRACT NO:

DEMETRAL PARK PATH: PHASE 2  
 SPECTRUM UTILITY POTHOLE LOCATIONS  
 M:\DESIGN\Projects\11515\CAD\Streets\11515EN-Street.dwg



11515



MARK	REVISION	DATE	BY
#1	REVISION 1	4-2-19	LJU
Scale: #####	Date: #####	Designed By: LJU	Date: #####

12345  
 #####  
 987654  
 CONTRACT NO:

DEMETRAL PARK PATH: PHASE 2  
 SPECTURM UTILITY POTHOLE LOCATIONS  
 M:\DESIGN\Projects\11515\CAD\Streets\11515EN-Street.dwg



11515