

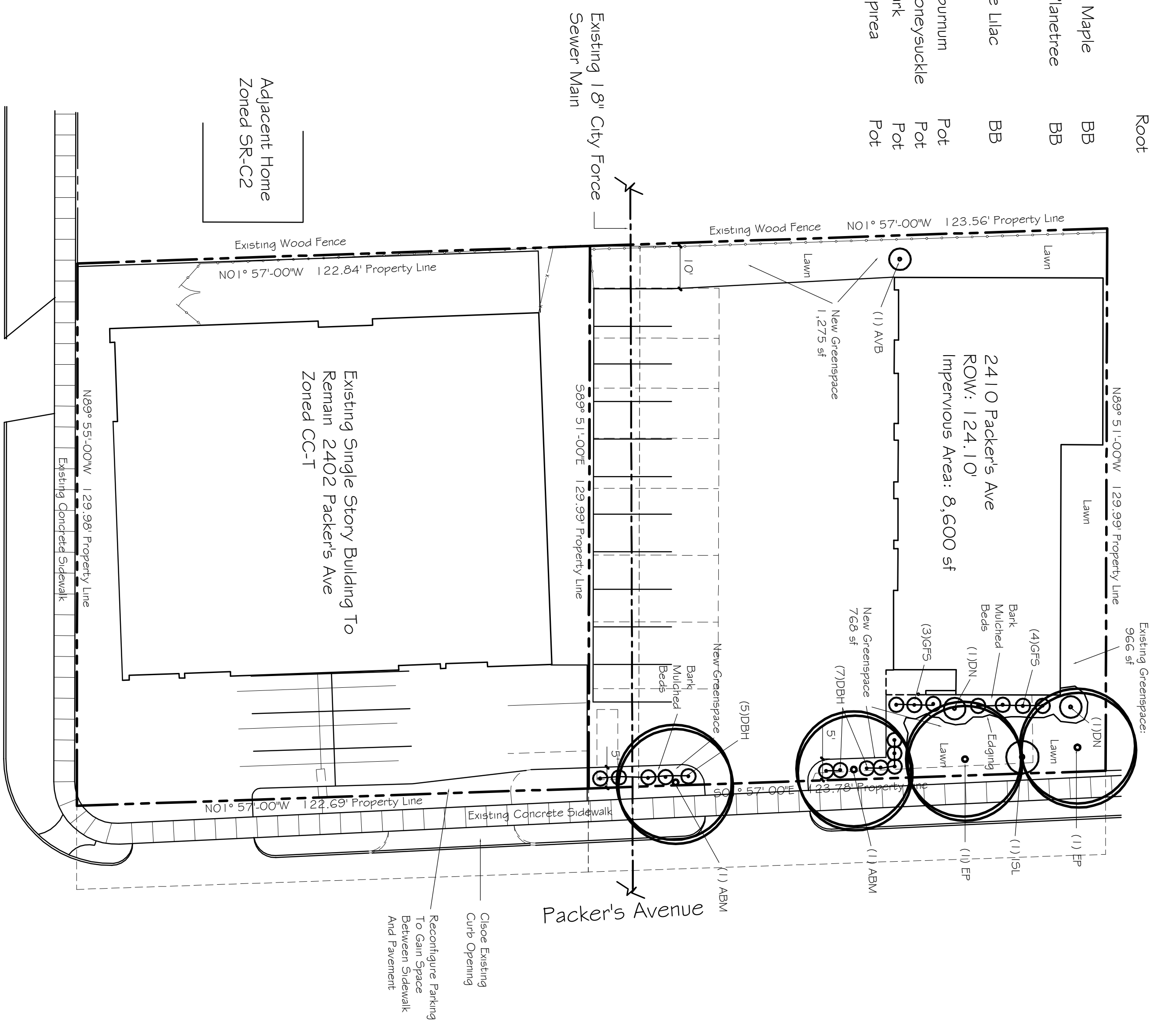
Key	Quantity	Size	Common Name	Root
	(4)	Canopy Trees		
ABM	(2)	2-1/2"	Autumn Blaze Maple	BB
EP	(2)	2-1/2"	Exclamation Planetree	BB
	(1)		Ornamental Trees:	
ISTL	(1)	2"	Ivory Silk Tree Liliac	BB
	(22)		Deciduous Shrubs:	
AVB	(1)	36"	Arrowwood Viburnum	Pot
DBH	(12)	24"	Dwarf Bush Honeysuckle	Pot
DN	(2)	36"	Diablo Ninebark	Pot
GFS	(7)	18"	Gold Flame Spiraea	Pot

Landscap Points Required: 8,600 sf
 Developed Area: 8,600 / 300 x 5 = 143 Points
 Total Landscap Points Required: 143 Points
 Landscap Points Supplied:
 Existing canopy trees 0 @ 35 = 0 points
 Proposed canopy trees 4@ 35 = 140 points
 Existing evergreen trees 0 @ 35 = 0 points
 Proposed evergreen trees 0 @ 35 = 0 points
 Existing ornamental trees 0 @ 15 = 0 points
 Proposed ornamental trees 1 @ 15 = 15 points
 Existing upright evergreen shrubs 0 @ 10 = 0 points
 Proposed upright evergreen shrubs 0 @ 10 = 0 points
 Existing deciduous shrubs 0 @ 3 = 0 points
 Proposed deciduous shrubs 22 @ 3 = 66 points
 Existing evergreen shrubs 0 @ 4 = 0 points
 Proposed evergreen shrubs 0 @ 4 = 0 points
 Existing perennials and grasses 0 @ 2 = 0 points
 Proposed perennials and grasses 0 @ 2 = 0 points
 Total Landscap Points Supplied: 221 points

Lot Frontage Landscap Required: (Section 28.142(5) Development Frontage Landscaping)

"One (1) over-story deciduous tree and five (5) shrubs shall be planted for each thirty (30) lineal feet of lot frontage. Two (2) ornamental trees or two (2) evergreen trees may be used in place of one (1) over-story deciduous tree."

Packers Avenue = 124 lf
 Over-story trees required: 124/30' = 4.1
 Shrubs required: (124/30) x 5 = 20.7
 Over-Story Trees Supplied: 4 Trees
 Ornamental/Evergreen Trees Supplied: 0 Trees
 Shrubs Supplied: 21 Shrubs



- Notes:
- 1) New lawn areas and disturbed, existing lawns areas to receive a minimum of 4" of topsoil, bluegrass seed mix, starter fertilizer, straw mat mulch.
 - 2) Foundation and other planting beds, and individual tree and shrub groupings in lawn areas to be mulched with shredded bark mulch spread to a depth of 3".
 - 3) Designated planting beds to be separated from lawn areas with 5" black vinyl edging.
 - 4) Owner will be responsible for landscape maintenance after completion and acceptance of the project.

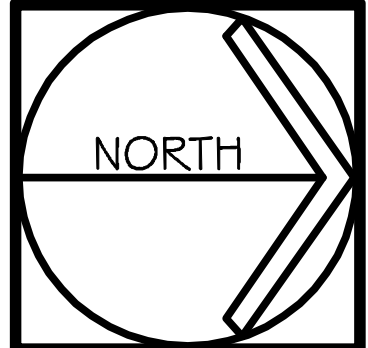
Landscape Plan
 1" = 20'

S.P.S.
 Paul Skidmore, Landscape Architect LLC
 Paul Skidmore, ASLA
 13841 Howe Tom (608) 832-0023
 Madison, WI 53717 (608) 333-1353 (c)
 paul@spslandscape.com

American Structures General Inc.
 Madison, WI 53704
 608-249-9191

Site Development for:
 Sparkle Auto Body
 2402 Packers Ave.
 Madison, WI 53704

Transcend Architects & Engineers
 500 Ferry St. #2500
 Madison, WI 53703
 (608) 825-2222 voice
 kvl@transcend.com



Landscape Plan
 1" = 20'

REVISIONS:
 Submitted To: City Planning
 10.21.2020

9 Sept 2020 2020-28
 2.2