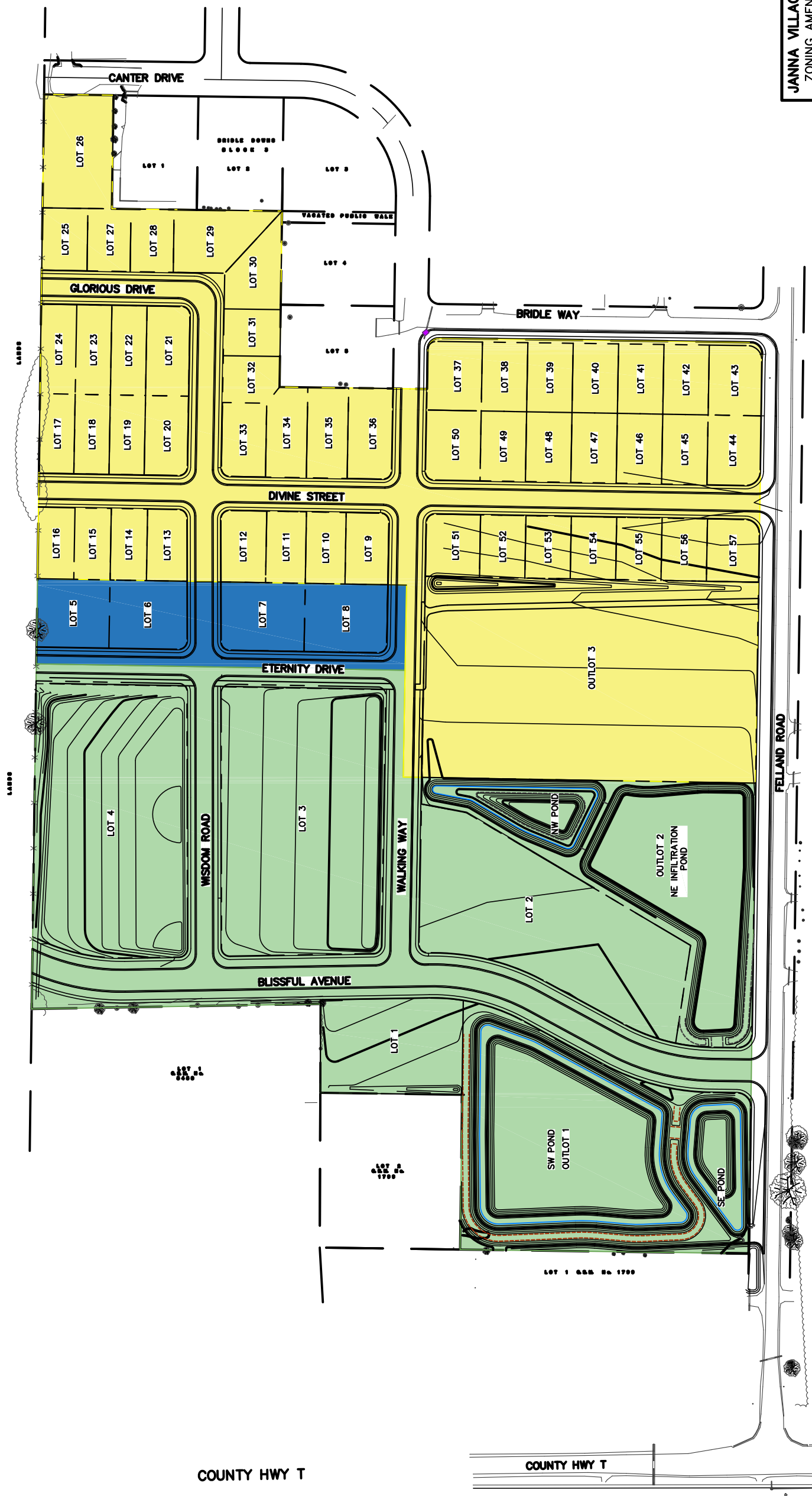


INTERSTATE 94/90



ZONING LEGEND

- SRC1
- SRC3
- TRU1

JANNA VILLAGE
ZONING AMENDMENT MAP
 PAGE: 1 OF 1
 DATED: JULY 7, 2020

QUAM ENGINEERING, LLC
 Residential and Commercial Site Design Consultants
www.quamengineering.com
 4604 Siggeikow Road, Suite A - McFarland, Wisconsin 53558
 Phone (608) 838-7750; Fax (608) 838-7752