



UW-Madison Office of Sustainability Campus Initiatives

Missy Nergard & Josh Arnold

Joint Campus Area Committee

September 30, 2020



Campus-Community Goals & Initiatives



Sustainability Tracking, Assessment & Rating System

STARS is the national metric for sustainability in higher education



Office of Sustainability
UNIVERSITY OF WISCONSIN-MADISON

UW–Madison merits silver rating in first sustainability assessment

October 7, 2019 | By Chris Barncard | [For news media](#) ⓘ



Chancellor Rebecca Blank said the silver STARS rating will help UW–Madison with recruitment. PHOTO BY: [BRYCE RICHTER](#)

Sustainability Tracking, Assessment & Rating System

STARS is the national metric for sustainability in higher education



Percentage of available
points earned
(0-100)

+

Innovation & Leadership
points earned (up to 4)

=

Overall STARS Score

Eligible Points

Academics	58
Engagement	41
Operations	72
Planning & <u>Administration</u>	<u>34</u>
Total Eligible	205
+ Innovation	<u>4</u>
Overall STARS Score	TBD

STARS Rating	Minimum % of Points Required	Minimum Points Required
Bronze	25 %	52
Silver	45 %	93
Gold	65 %	134
Platinum	85 %	175

Second Nature Resilience Commitment



COMMIT
Signed Commitment

ORGANIZE

2M

Implementation
Profile

1Y

Campus-Community
Task Force

ASSESS

2Y

Resilience
Assessment

PLAN

3Y

Climate
Action Plan

**MEASURE
PROGRESS**

4-7Y

REVIEW

8Y

CAP Review

YEARLY

Annual Progress
Evaluation



Office of Sustainability
UNIVERSITY OF WISCONSIN-MADISON

New Sustainability Guidelines for Capital Projects



AIA Framework for Design Excellence



- ❖ Takes effect tomorrow! Oct 1, 2020
- ❖ Applies to Capital Projects with RFQ's
- ❖ Based on AIA Framework for Design Excellence + **Education** and **Research**
- ❖ Mandatory requirements, optional measures, documentation



Division of Facilities Development and Management

Sustainability Guidelines
for
Capital Projects

August 2020
Version 1.0

*THIS GUIDELINE APPLIES TO ALL DFDM PROJECTS THAT HAVE A
REQUEST FOR CONSULTANT SERVICES POSTED ON OR AFTER
OCTOBER 1, 2020

Standards are located here:

<https://doa.wi.gov/Pages/DoingBusiness/Sustainability.aspx>

Adding renewable energy (on-campus and off-campus)

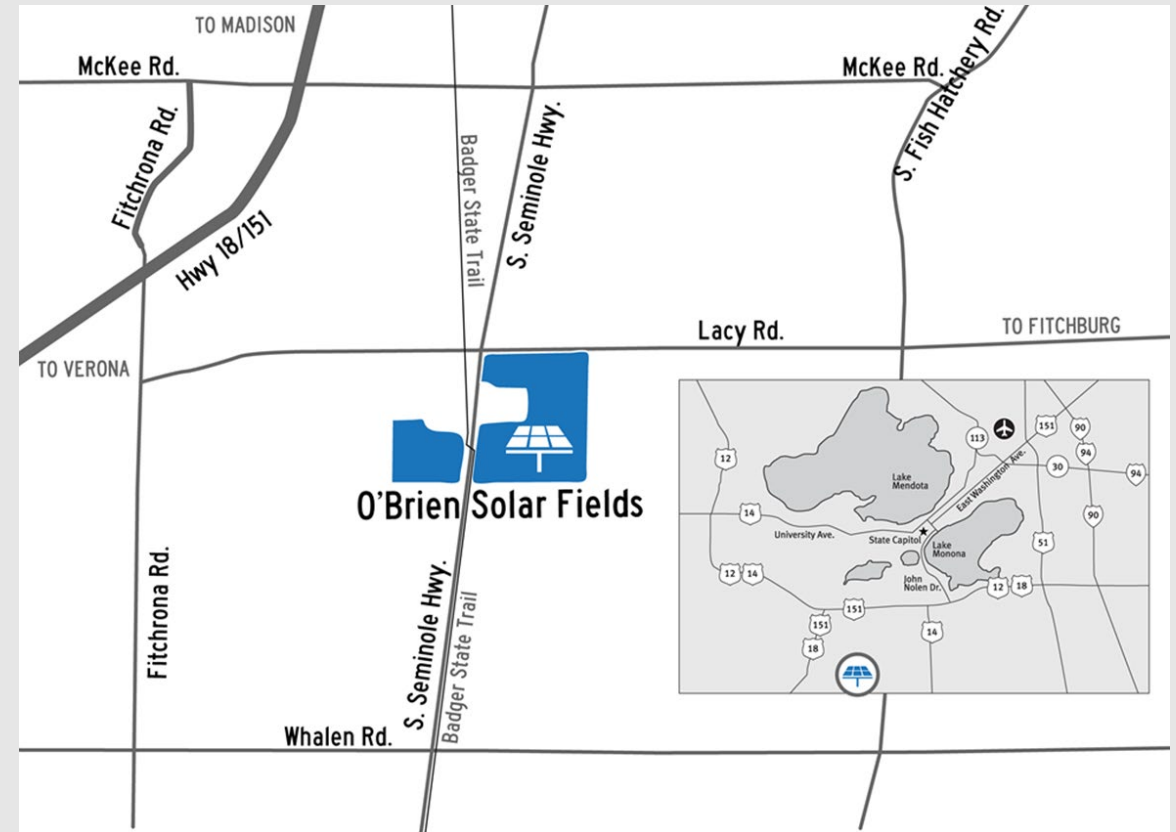


Examples of renewable energy potential on campus



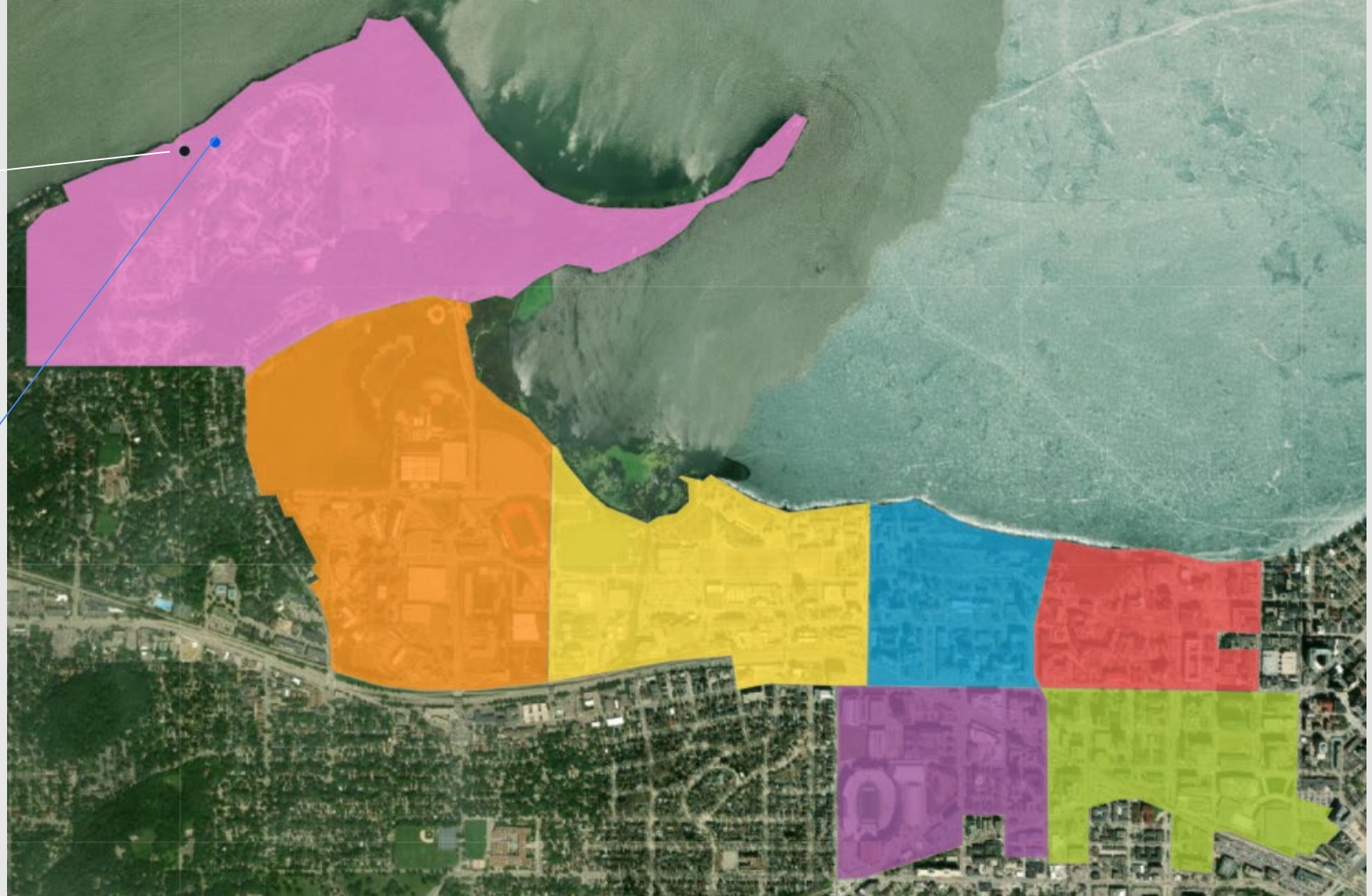
Source: Google Project Sunroof
<https://www.google.com/get/sunroof>

O'Brien Solar Fields (MGE RER project)



The investment will supply 10 MW of renewable energy while enabling UW-Madison faculty, staff and students access for research.

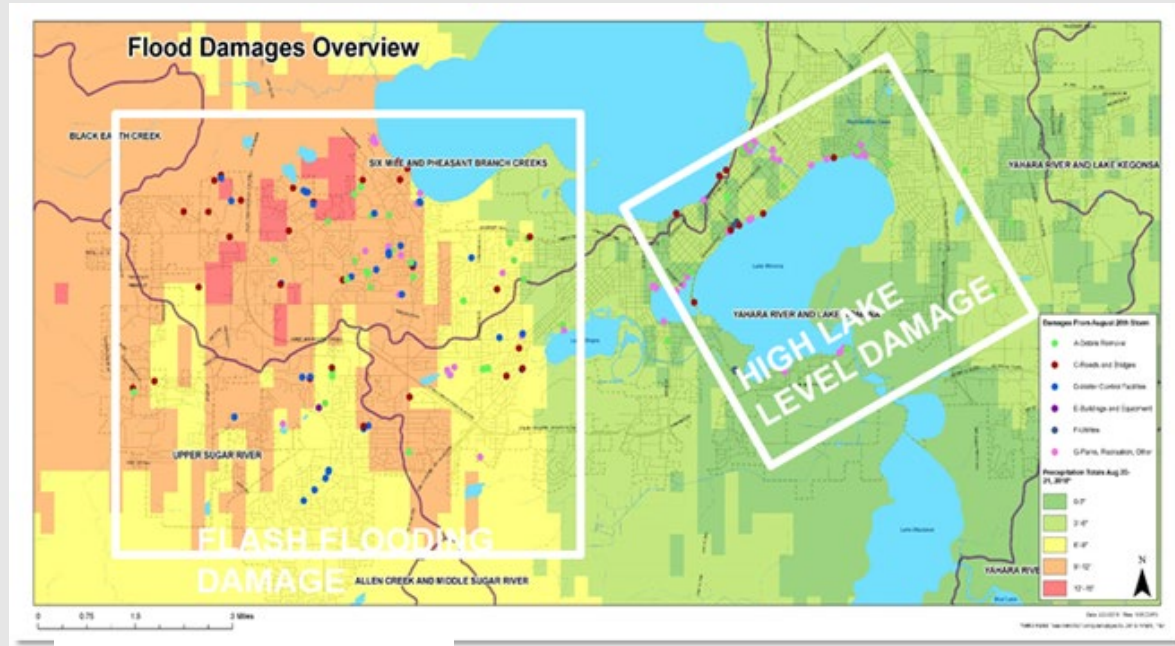
Mapping Campus Resource Flows



Research to Advance Sustainability Planning & Resilience

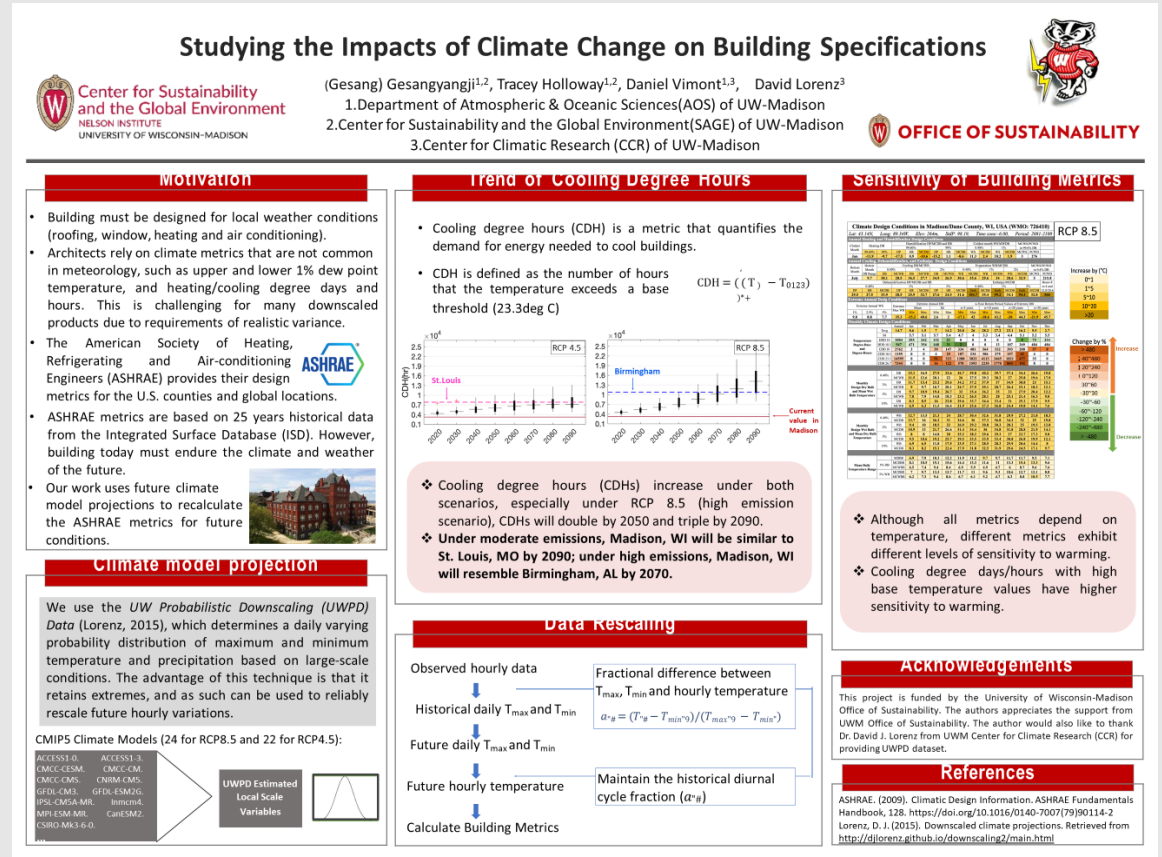


WICCI Stormwater Management and Resilience Assessment (2018 - current)



**WISCONSIN
INITIATIVE ON
CLIMATE
CHANGE
IMPACTS**

Updating Climate Models for Building Design Standards



Thank you



Missy Nergard
Director
missy.nergard@wisc.edu

Josh Arnold, JD, MBA, LEED AP
Campus Energy Advisor
josh.arnold@wisc.edu

