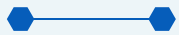


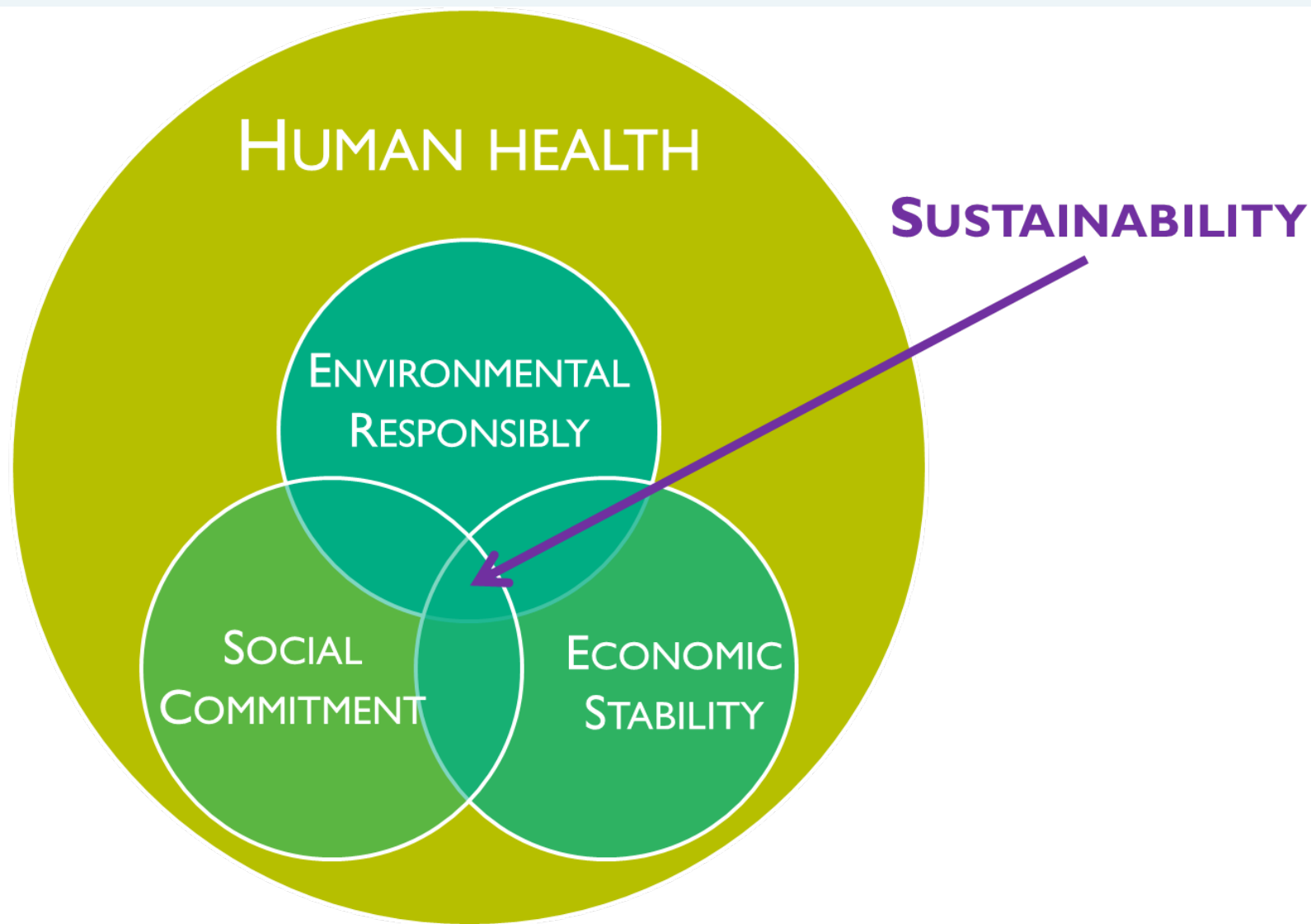
Sustainability at UW Health

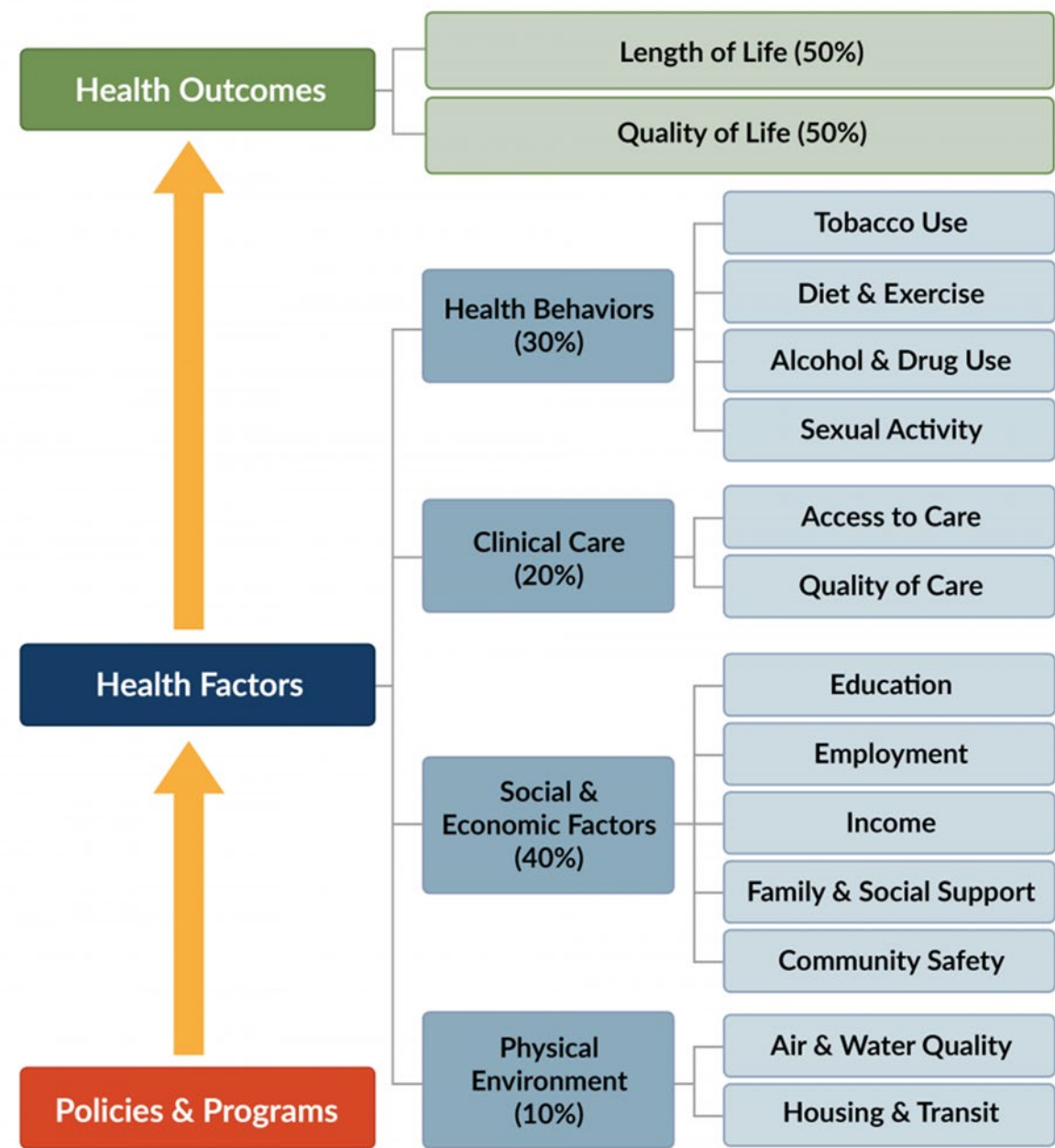
Mary Evers Statz

UW Health Program Director

Energy Management & Sustainability







County Health Rankings model © 2014 UWPHI

Healthy Environments Support Healthy People



UW Health has a proud history of serving our patients, educating the next generation of care providers, advancing healthcare innovation, and improving the health of our communities. Building on our past success, we are taking environmental health to the next level in pursuit of our new vision, Remarkable Healthcare. We commit to:



Engaged Leadership

- Make a public commitment prioritizing environmental health, safety, and social equity in an effort to help achieve the triple aim of better health, better care, and reduced cost for the communities we serve
- Embed sustainability in HR and Wellness
- Establish a partnership with UW-Madison Center for Climate Research and UW-Madison School of Medicine and Public Health to collaborate on research to make the connection between human health and the health of the environment
- Identify sustainable opportunities at all seven UW Health hospitals



Less Waste

- Reduce the volume and toxicity of our waste to protect public health and use environmentally sound waste and disposal practices



Smarter Purchasing

- Employ smarter purchasing strategies by looking at products that avoid chemicals of concern, improve energy and water efficiency, and optimize waste minimization strategies

Dr. Karin Zuegg, Medical Director
of Sustainability

Mary Evers Statz, Prog. Director
Energy Mgt. & Sustainability



Leaner Energy & Water

- Improve energy and water efficiency across UW Health's portfolio of space to reduce greenhouse gas emissions and protect human health
- Evaluate renewable energy sources to further reduce UW Health's greenhouse gas emissions and protect public health



Safer Chemicals

- Actively address chemicals of concern as identified by the Healthier Hospitals Initiative and look for opportunities to safely manage, eliminate, or find alternatives to protect the health of patients, staff, and the environment



Healthy Food

- Provide access to healthy, responsible food and beverage options to improve the health of patients, staff and the communities we serve
- Reduce the amount of food we send to the local landfill

Dr. Alan Kaplan, UW Health CEO

7/17/2018

Date Signed

Our approach | Health care's sustainability agenda



Buildings

Support green and healthy hospital design and construction



Chemicals

Substitute harmful chemicals with safer alternatives



Energy

Implement energy efficiency and clean, renewable energy generation



Food

Purchase and serve sustainably grown, healthy food



Pharmaceuticals

Safely manage and dispose of pharmaceuticals



Transportation

Improve transportation strategies for patients and staff



Waste

Reduce, treat, and safely dispose of health care waste



Water

Reduce hospital water consumption and supply potable water



Green Building Leader in Wisconsin

First healthcare clinic in Wisconsin to earn LEED Silver certification.

Stoughton Clinic 2010

First hospital in Wisconsin to earn LEED Gold certification.

The American Center 2017

Seven total LEED certified buildings.

Pursuing opportunities at East Campus.





Leader in Energy Efficient Operations



**Working Toward a More Innovative,
Affordable, and Energy Efficient Future**

PROGRESS REPORT 2019

UWHealth

Challenge Partners with Greatest Energy Savings

Savings Toward Initial Goal Since Baseline Year

UW Health*	25%
Cleveland Clinic Foundation	19%
University of Maryland Medical Center	12%
University of Pittsburgh Medical Center	12%
University of Nebraska Medical Center	11%

*Goal achiever



U.S. DEPARTMENT OF
ENERGY



Sustainable Food Leader

First system in the Midwest to sign on to the Cool Food Pledge from the World Resources Institute, pledging to reduce food related greenhouse gas emissions by 25% by 2030.



WORLD
RESOURCES
INSTITUTE

2018 Practice Greenhealth *national top 10 award* for local, sustainable food offerings at UH/AFCH

- Pesticide and chemical-free crops
- Local, state, regionally sourced
- Third party certification
- Ecologically & environmentally sustainable practices





Waste Diversion

2019 recycling rate was 28%, above median for healthcare.

In 2019 we composted *over 30 tons* of food waste at our hospitals.

2019 hazardous pharmaceutical waste disposal at our hospitals was *down 19 tons* from 2017 despite an increase in patient volumes.





Improvements to Local Water Quality

Participated in Wisconsin's Salt Wise Program working on smart winter salting practices to reduce pollution in our lakes, streams and drinking water.



UW Health has 9 drug take back bins and has collected over 300 pounds since April 2019

- 46M Americans are exposed to trace amounts of narcotics in drinking water.
- Water reclamation facilities are not designed to remove all drugs and trace amounts of pharmaceuticals are showing up in rivers and lakes around the world.





Greening UW Health Operating Rooms

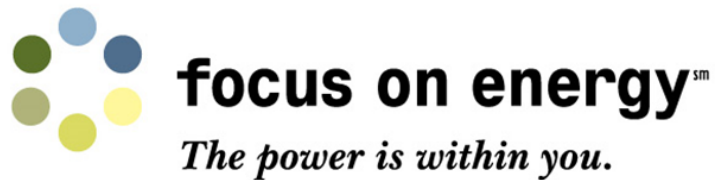
Since 2012 we saved *2.8M tons of carbon dioxide* from entering the local atmosphere by switching to a less polluting anesthetic gas.




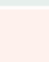




In 2019 we collected over 1 lb. of single use devices per OR procedure. National median is .77 lbs., hospitals in the 90th percentile are 1.47 lbs. per OR procedure.

Many items in our OR's are clean and we are doing a good job of sorting and *recycling right*.



Award Winning Efforts



Category		Metric	UH/AFCH	TAC	Meriter	2020 median	2020 90 th Percentile	UW Health Target
WASTE		% recycling	28%	33%		26%	40%	26%
		% RMW	9.9%	13.1%		8.3%	4.8%	8.3%
		RMW tons/OR	6.97 tons	3.63 tons		9.26 tons	5.41 tons	5.41 tons
		Total pounds waste/patient day	34 lbs.	89 lbs.		43 lbs.	31 lbs.	31 lbs.
		Total tons waste/OR	70 tons	28 tons		118 tons	70 tons	70 tons
CHEMICALS		% spend green cleaners (EPP)	(—)	(—)		38%	98%	38%
		% spend healthy interiors (EPP)	93%	95%		87%	100%	100%
		% spend safer hand hygiene (EPP)	(—)	(—)		100%	100%	100%
GREENING OR		% of OR kits reviewed	100%	100%	100%	100%	100%	100%
		Pounds SUDs collected per OR procedure	1.20 lbs.	0.65 lbs.	2.18 lbs.	0.64 lbs.	1.47 lbs.	1.47 lbs.
		% kits in reusable sterilization container (EPP)	100%	(—)	51%	71%	88%	100%
		% of ORs with HVAC setback	0	0	0	74%	100%	74%
		% change in GHGs from anesthetics	53%	(—)	(—)	28%	64%	64%
FOOD		% change in meat use (by weight) (EPP)	5.30%	(—)		8.6%	59.2%	8.6%
		% change in GHGs from meat (EPP)	-3%	(—)		11%	52%	11%
		% sustainable meat (by weight) (EPP)	(—)	(—)		27%	72%	72%
		% of spend on sustainable (EPP)	(—)	(—)		13%	31%	31%
		% of spend on local (EPP)	24%	21%		6%	26%	26%
		% of spend on healthier beverages (EPP)	(—)	(—)		60%	84%	60%
ENERGY		Energy use intensity (EUI)	304	198		248	161	161-248
		% change in EUI from baseline year	33%	1%		8%	31%	8%-31%
		Energy Star score	21	72	23	53	87	53-87
WATER		Total gallons per square foot	25 gals/ft²	28 gals/ft²		42 gals/ft²	26 gals/ft²	26 gals/ft²
		% change in water use	-3%	-2%		15%	39%	15%
		Indoor gallons per square foot	25 gals/ft²	28 gals/ft²		42 gals/ft²	25 gals/ft²	25 gals/ft²
		Total gallons per FTE	7569 gals/FTE	20335 gals/FTE		12252 gals/FTE	6598 gals/FTE	6598 gals/FTE
CLIMATE		% renewable energy (EPP)	(—)	(—)		9.2%	21.4%	5.0%
		% change tracked GHG emissions	22%	-1%		4%	22%	22%
GREENBLDG		% construction & demo waste recycled	53%	(—)		72%	88%	72%

(...) indicates we had no data for this category

Goal: Reduce our greenhouse gas emissions to improve human health.



