

- NOTES:**
- 1. No speed control on Lakeside (no stop signs the entire length)
  - 2. Several official City reports dating back to 2005 suggested traffic control measures to reduce vehicular speed on Lakeside.
  - 3. 1/4 mile walk (5 minutes) is as far as most people are willing to walk before driving (Congress for the New Urbanism)
  - 4. John Nolen, within the Bay Creek Neighborhood, is ranked as the 3rd highest non-intersection crashes (City of Madison's 2018 Crash Facts)

- 5. 2025 proposed reconstruction of JN from Olin to north of causeway
- 6. Limited bicycle safety facilities or directional signage or road markings within the neighborhood

**LEGEND - EXISTING CONDITIONS**

- NEIGHBORHOOD GATEWAY
- PRIMARY PEDESTRIAN/CYCLE CONNECTION
- RAILROAD
- TRAFFIC CONTROL SIGNAL





IMAGE 1



IMAGE 2



IMAGE 3

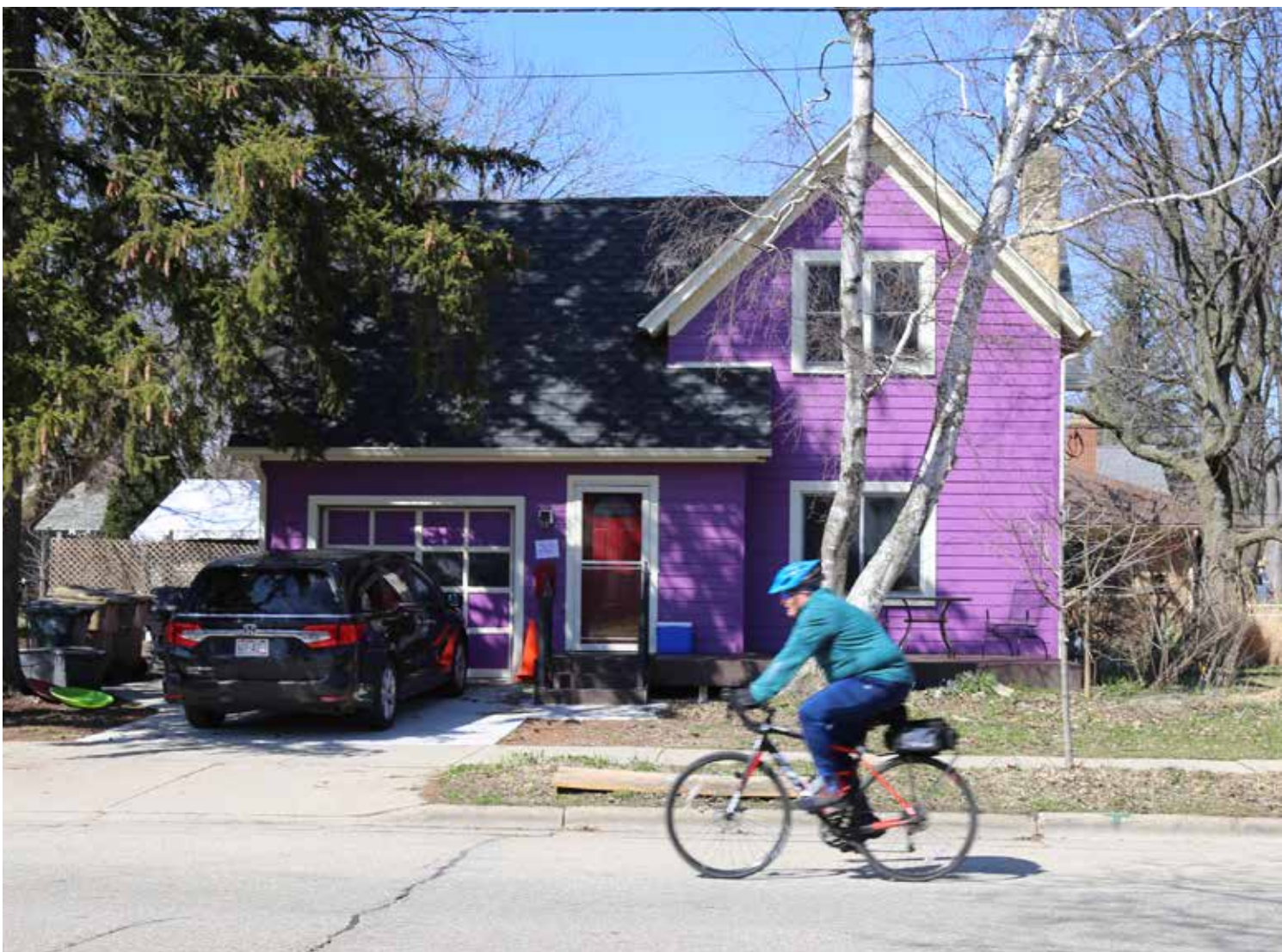


IMAGE 4



IMAGE 5



IMAGE 6

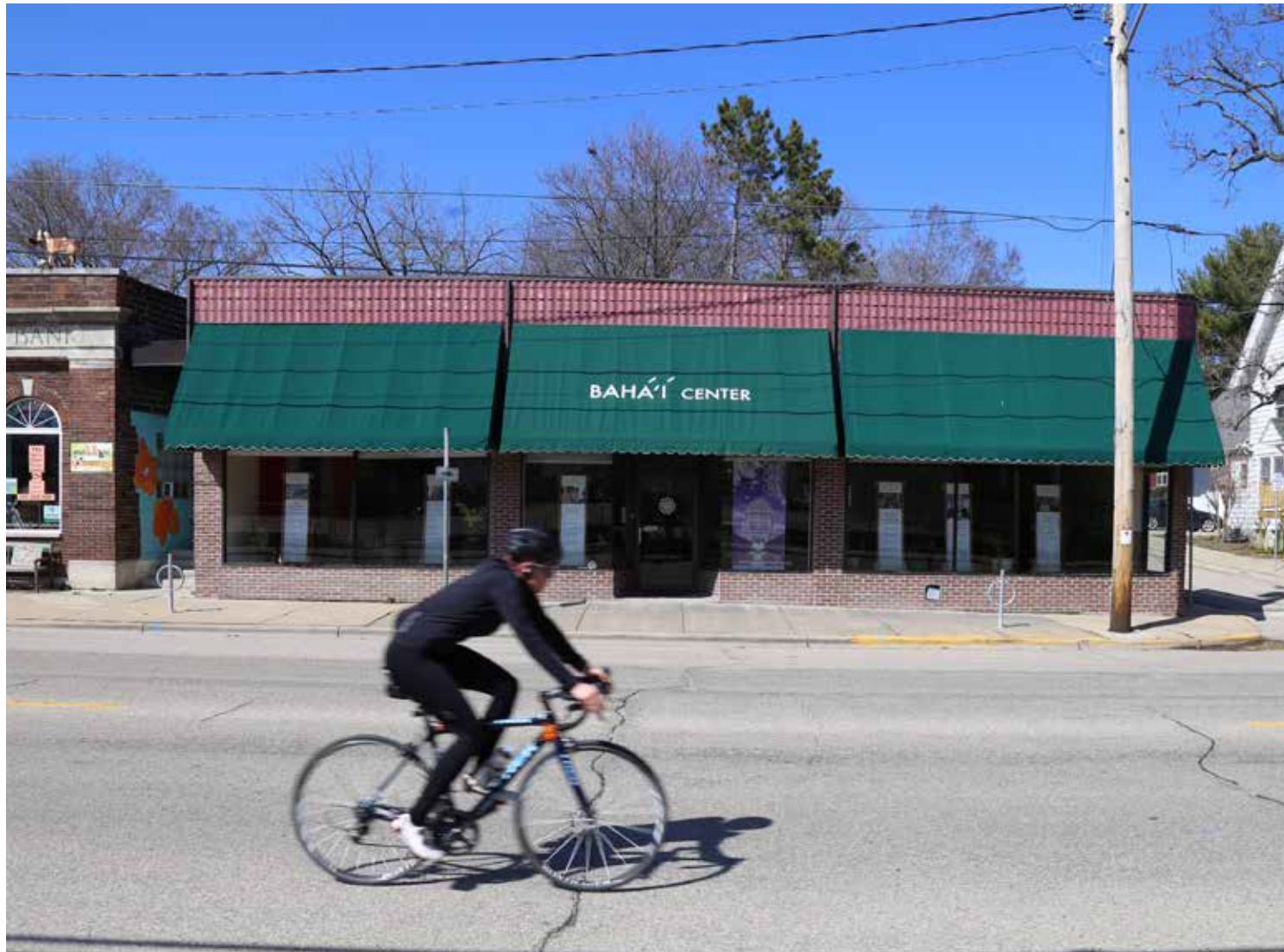


IMAGE 7



IMAGE 8



IMAGE 9



IMAGE 10



IMAGE 11

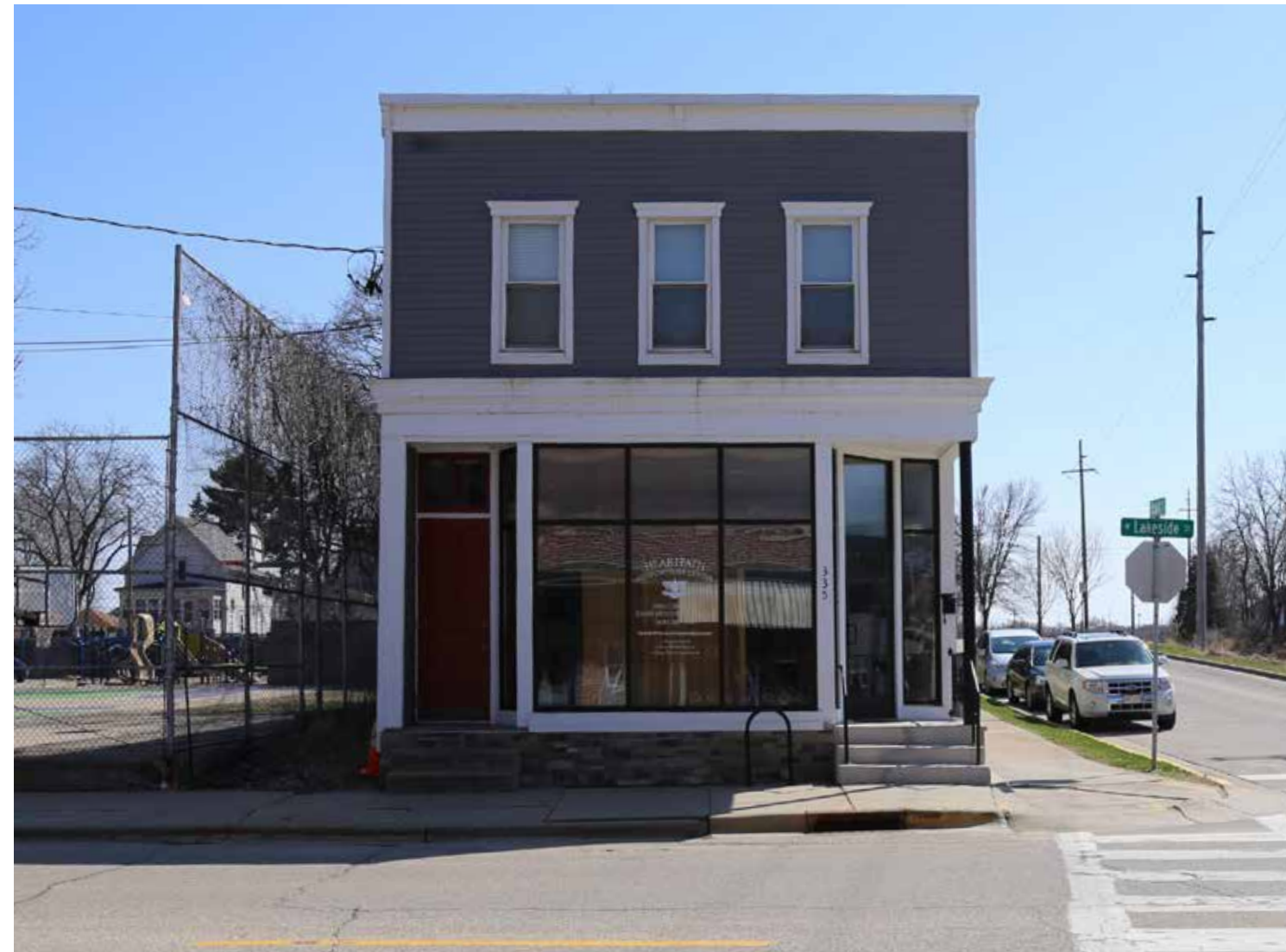


IMAGE 12





IMAGE 1

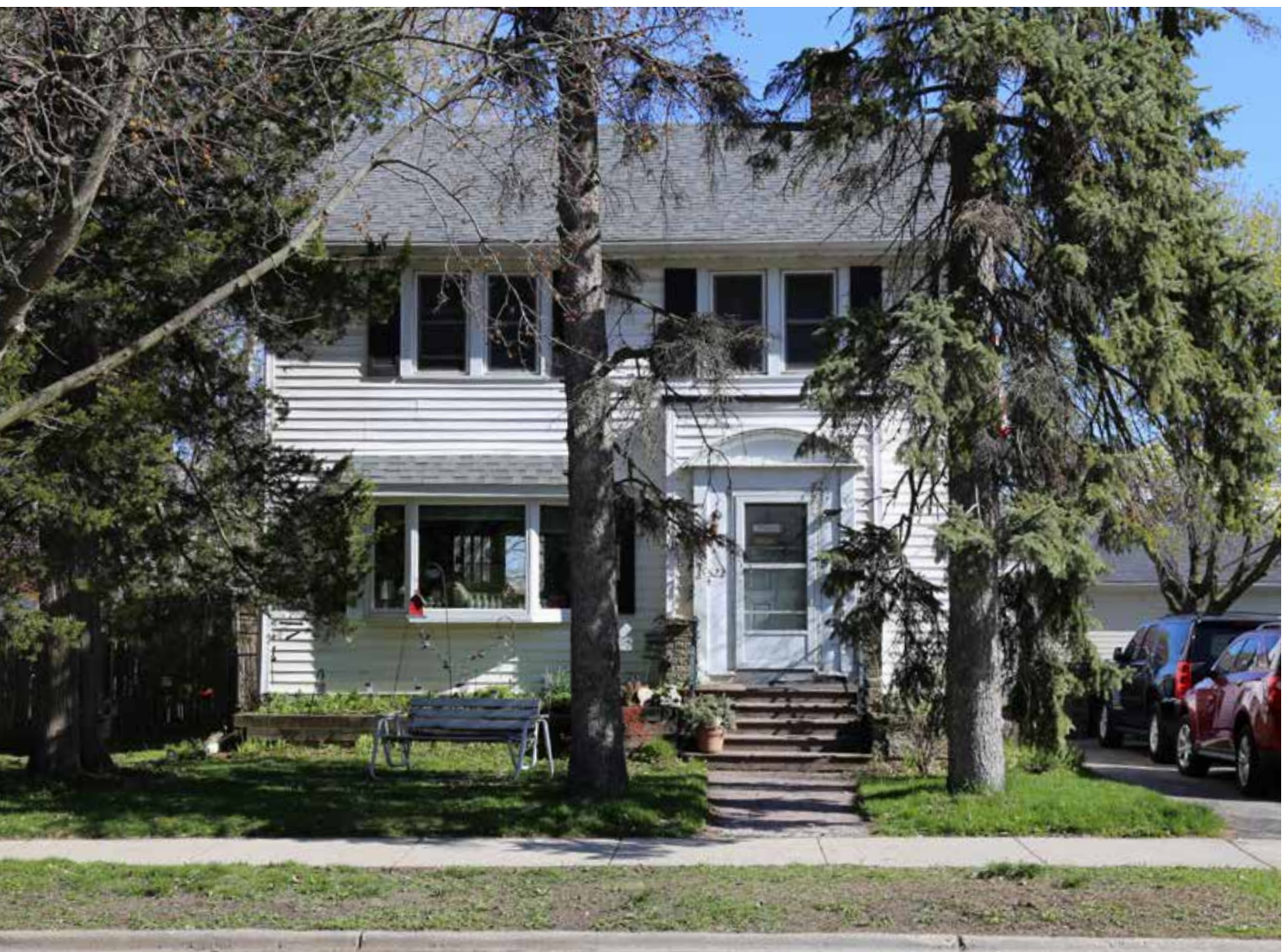


IMAGE 2



IMAGE 3

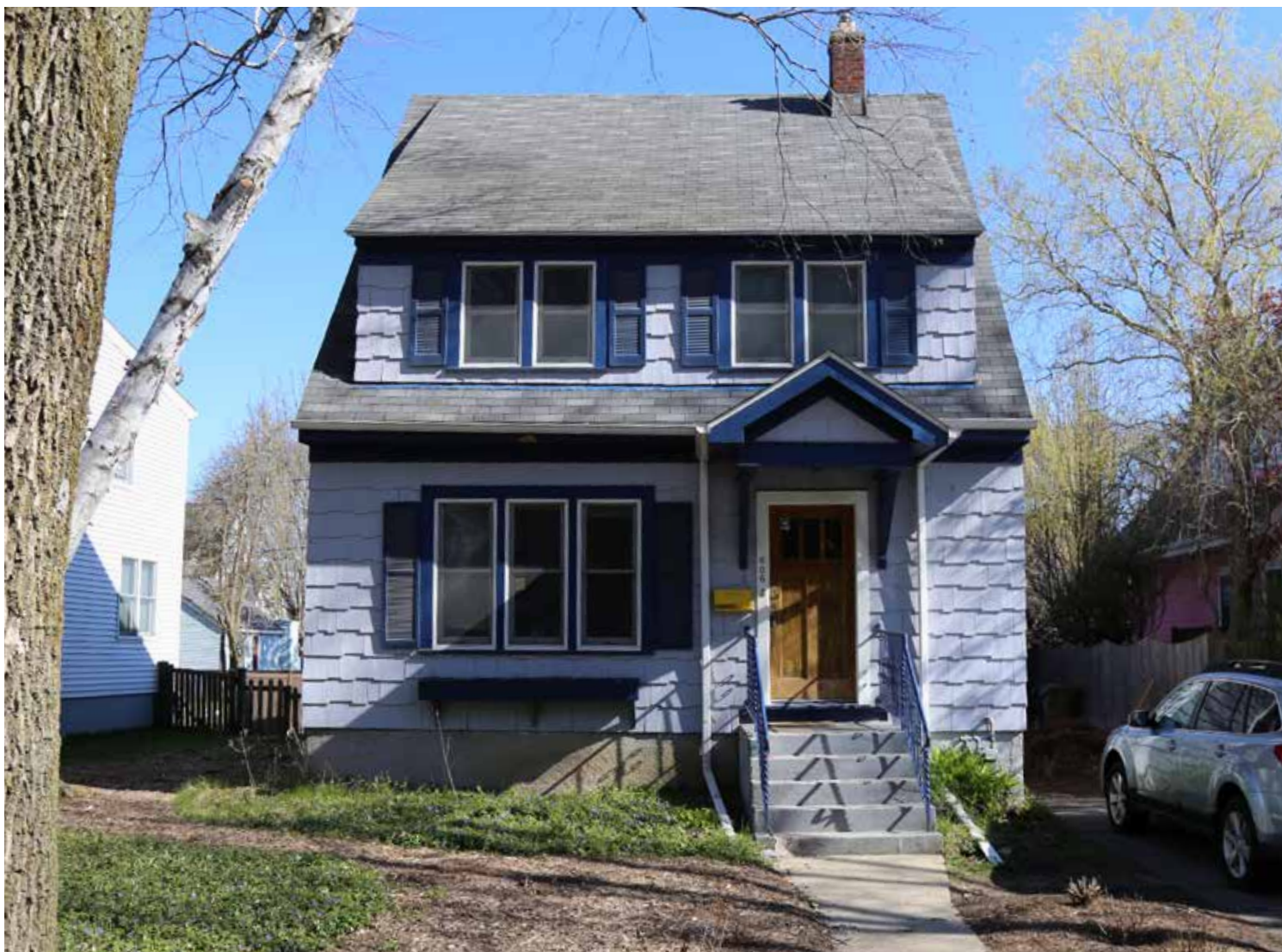


IMAGE 4



IMAGE 5



IMAGE 6



IMAGE 7



IMAGE 8



IMAGE 9



IMAGE 10



IMAGE 11



IMAGE 12









**MAIN AND BEDFORD**



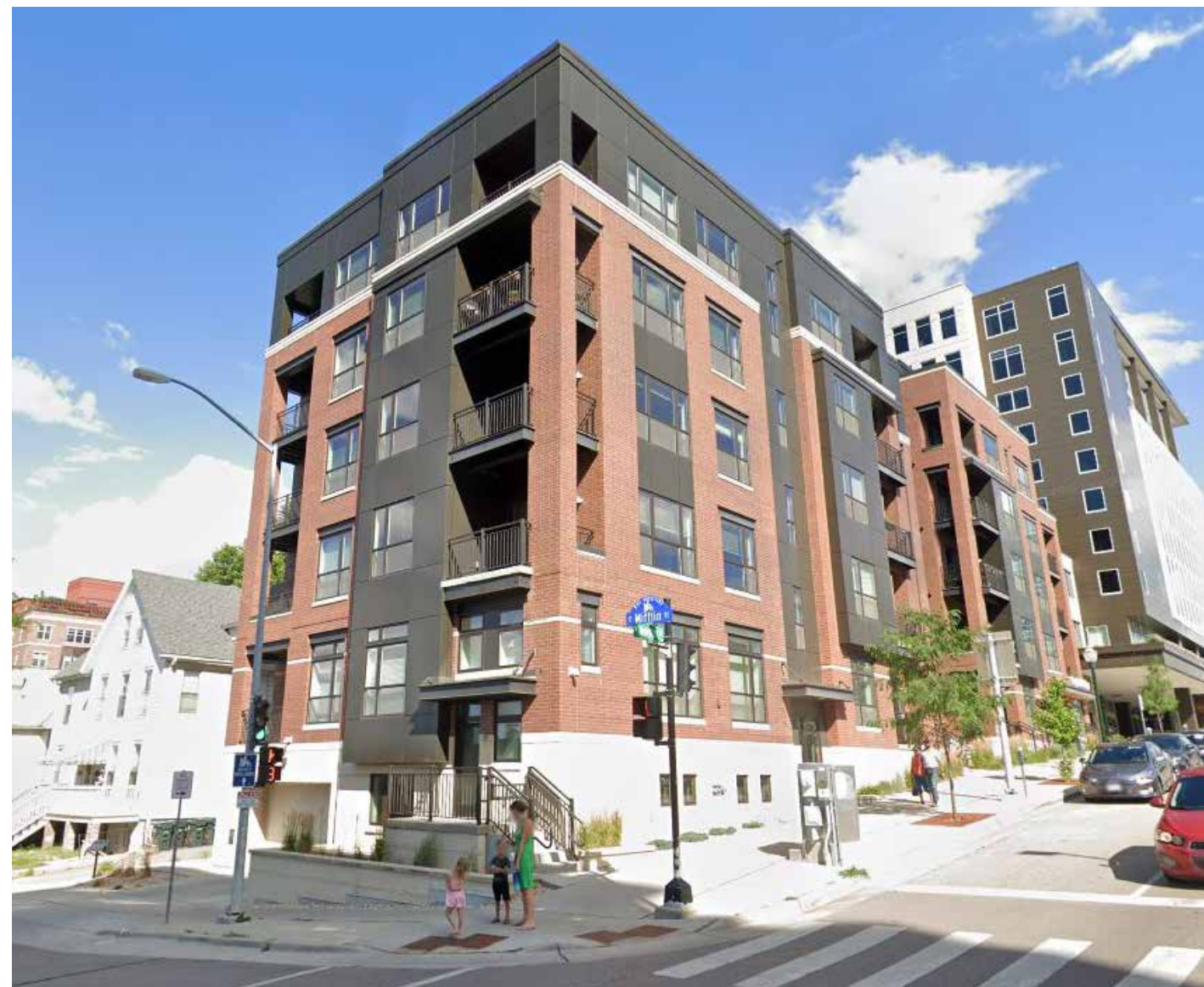
**ATWOOD**



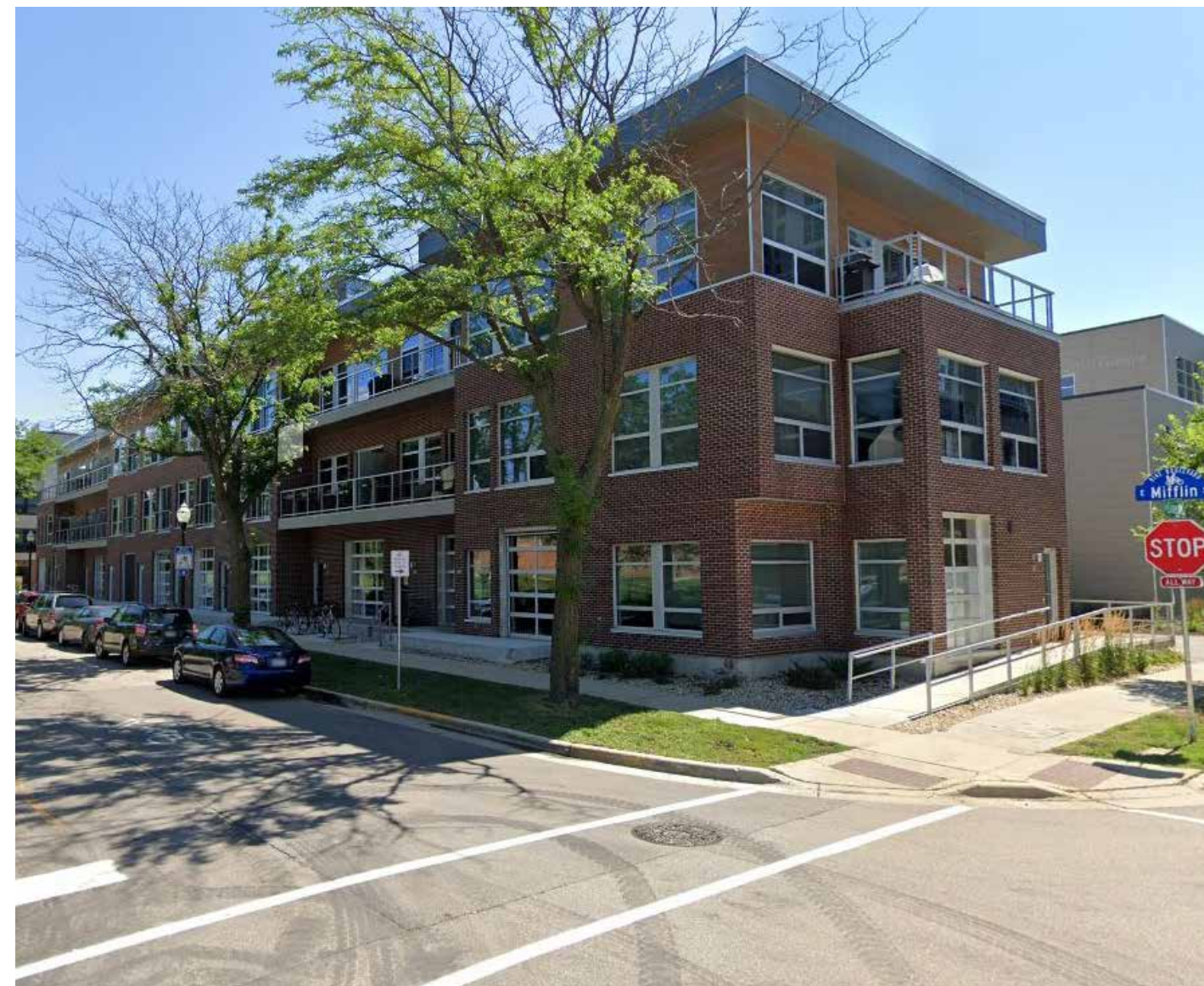
**PROPOSED BAY VIEW BUILDING (NEIGHBORHOOD)**



**E. WASHINGTON AND FEW**



**E. MIFFLIN AND WEBSTER**



**MIFFLIN AND LIVINGSTON**



**MONROE AND HARRISON**



**DRAKE AND PARK**



**PROPOSED 1109 PARK STREET (REAR BUILDING)**



**PROPOSED 1109 PARK STREET (FRONT BUILDING)**





*PROPOSED 1109 PARK STREET (FRONT BUILDING)*



*PROPOSED 113 E. LAKESIDE (FRONT BUILDING)*





UDC informational meeting



UDC meeting 1



UDC informational meeting



UDC meeting 1



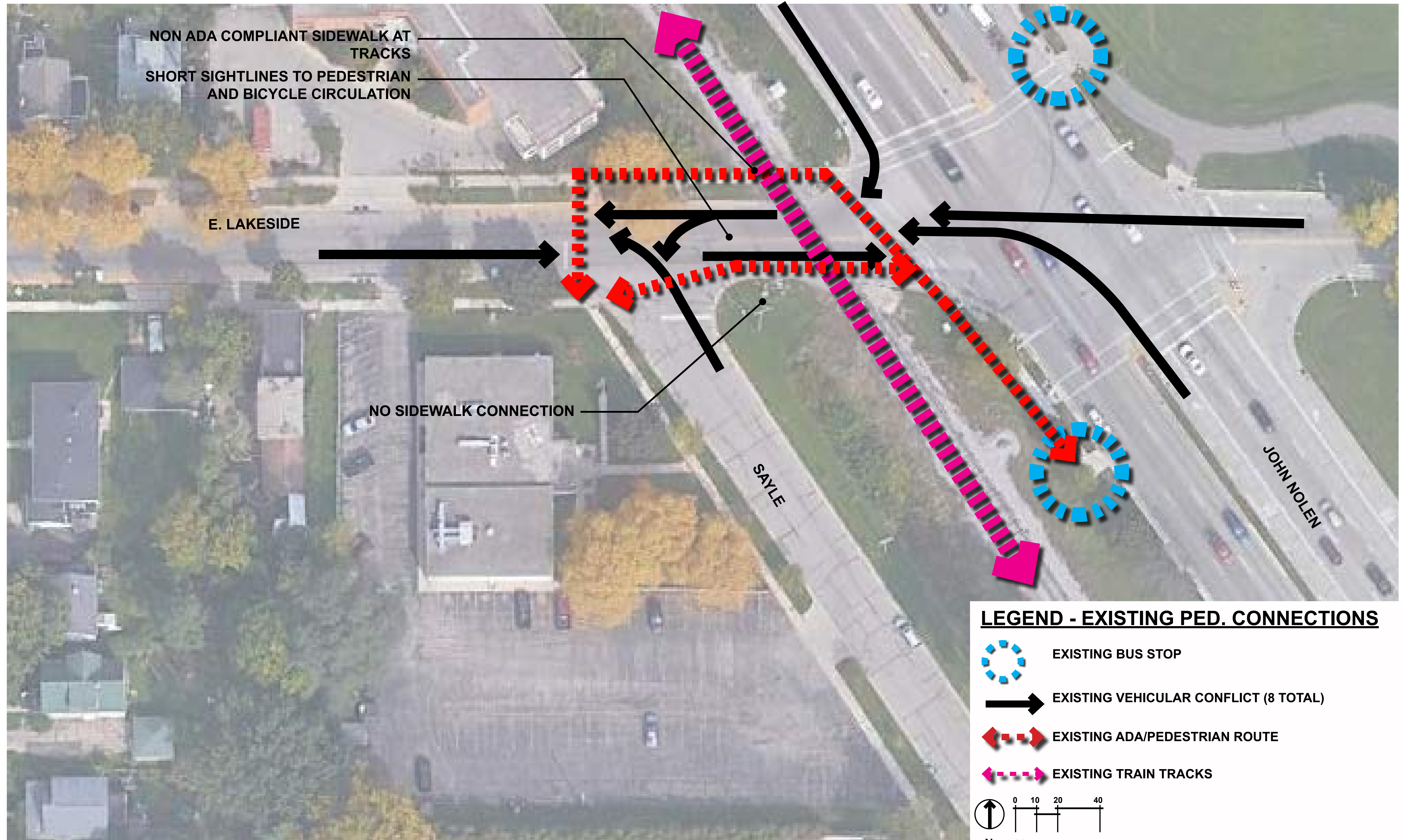






IMAGE 1: SAYLE AND E. LAKESIDE



IMAGE 2/3: NON COMPLIANT ADA SIDEWALK AT TRACKS



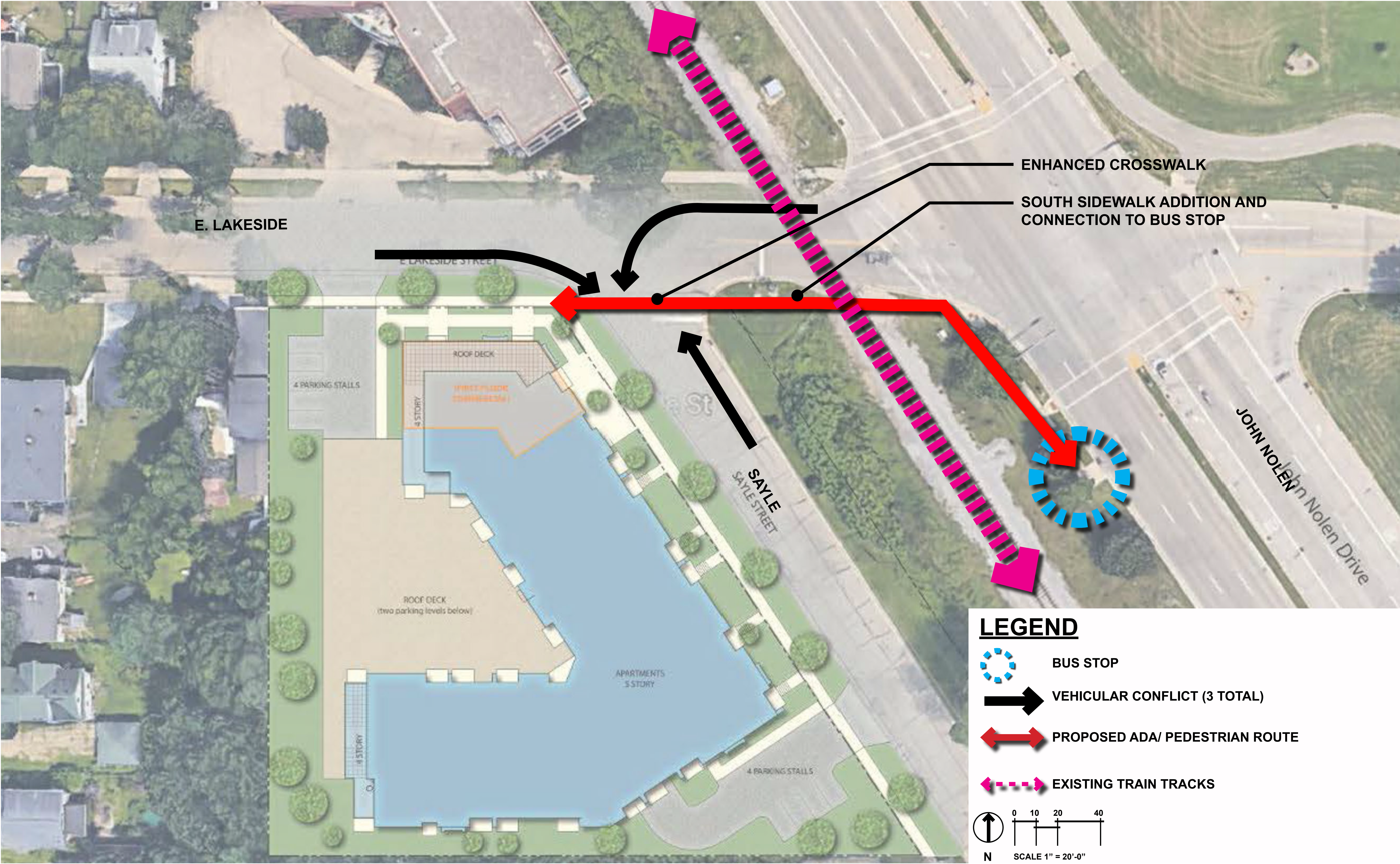
IMAGE 4: NORTHBOUND BUS STOP



IMAGE 5: SOUTHBOUND BUS STOP











**WINTER - 3PM**