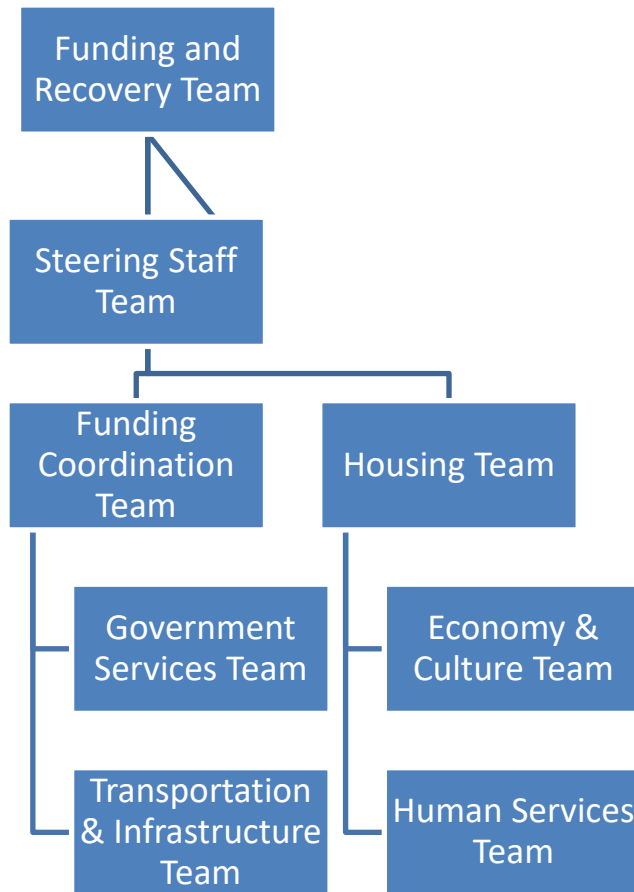


# Transportation & Infrastructure Recovery Team Update to Transportation Commission

Jun 24, 2020

## 1. Purpose & Structure

In response to the COVID-19 pandemic, the City of Madison activated its Emergency Operation Center to organize staff in order to consolidate communications and response to the emergency. As we have begun to move from the “Prepare and Respond Phases” of the emergency into the next phases of the Pandemic Response plan, it has become clear that we need to reorganize staff around the Multi-Agency Planning (MAP) team concept, which we propose naming the “Funding and Recovery Team”.



## 2. Transportation & Infrastructure Team Members:

Chris Petykowski, Engineering  
Yang Tao, Traffic Engineering  
Sabrina Tolley, Parking Utility  
Justin Stuehrenberg, Metro  
Brian Grady, Planning

Heather Stouder, Planning  
Jenny Frese, Office of Real Estate Services  
Tom Lynch, Department of Transportation  
Crystal Martin, Metro  
Tom Mohr, Traffic Engineering  
Stephanie Mabry, Finance  
Leslie Orrantia, Mayors Office  
Robert Phillips, Engineering  
Amy Scanlon, Engineering  
Matt Wachter, Planning

### 3. Focus

#### Short-Term Focus

- Enact short-term measures to facilitate social distancing in public spaces
- Advance public works projects that are less disruptive during the economic slowdown
- Prepare public works projects that can take advantage of federal funds

#### Long-Term Focus

- Create new public works projects to take advantage of stimulus programs

### 4. Recovery Work Plans

- a. Metro: discuss issues such as Bus Capacity, Fare Suspension, Barriers for drivers, Service reduction
- b. TE: discuss issues such as local street closures, Signal timing changes, Café Parklets, Streatery program, Vision Zero Advance projects, Peak Hour Travel Lanes suspension,
- c. Parking: suspension of On Street parking fees and recovery, Ramp fee suspension and recovery,
- d. Engineering: City Contract shutdown and re-establishment, New screening requirements on city projects, Engineers obtain E Stamps to design and bid from home, identify potential stimulus projects