

Madison, Wisconsin

CITY OF MADISON

CITY ENGINEERING DIVISION

DEPARTMENT OF PUBLIC WORKS

PLAN OF PROPOSED IMPROVEMENT

PUBLIC IMPROVEMENT PROJECT APPROVED
APRIL 16, 2019

BY THE COMMON COUNCIL
OF MADISON, WISCONSIN

PUBLIC IMPROVEMENT DESIGN
APPROVED BY:

[Signature] 2/11/20
City Engineer Date

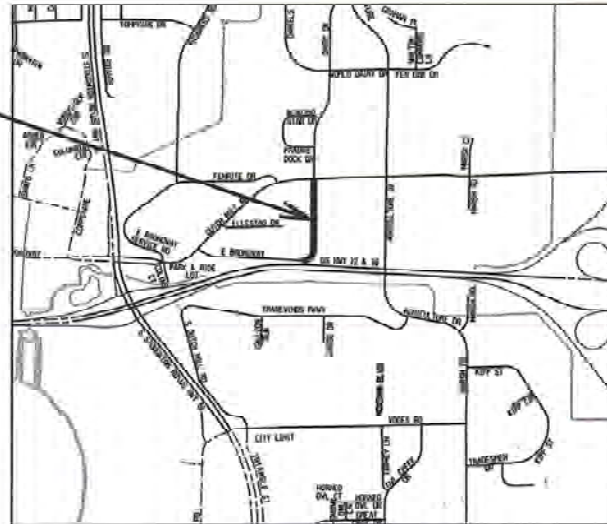
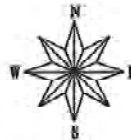
INDEX OF SHEETS

SHEET NO.	TITLE
SHEET NO. 1	TYPICAL SECTIONS
SHEET NO. D1	DEMOLITION PLAN
SHEET NO. D2	EROSION CONTROL PLANS
SHEET NO. EC1-EC3	SIDWALK PLAN & PROFILES
SHEET NO. P1-P3	SEWERS PLAN & PROFILES
SHEET NO. U1-U3	BIOINFILTRATION BASIN DETAIL
SHEET NO. U4	BIOINFILTRATION BASIN RESTORATION PLAN
SHEET NO. U5	SEWER MANHOLES
SHEET NO. U6-U7	WATER PLAN & PROFILES
SHEET NO. W1-W3	WATER ESTIMATE OF MATERIALS
SHEET NO. W4	WATER IMPACT PLAN
SHEET NO. W5	ELECTRICAL PLANS
SHEET NO. E1-E3	TRAFFIC CONTROL PLAN
SHEET NO. TC-1	CROSS SECTIONS
SHEET NO. X1-X12	MAINTENANCE MAP (CITY USE ONLY)
SHEET NO. M-1	

DAIRY DRIVE ASSESSMENT DISTRICT - 2019

CITY PROJECT NO. 11865
CONTRACT NO. 8294

PROJECT LOCATION



CONVENTIONAL SIGNS

FIELD VERIFY ALL UTILITY LOCATIONS

GAS	— G —
STORM SEWER	— ST —
SANITARY SEWER	— SAN —
WATER	— W —
OVERHEAD ELECTRIC	— OH —
POWER POLE	— P —

NOTES:

ALL CUTTERS SHALL DRAIN WITH A MINIMUM GRADE OF 0.50% TOWARD STORM SEWER INLETS.

SIDWALK RAMPS AND CURB THRU SIDEWALK RAMPS SHALL HAVE A MINIMUM SLOPE OF 1" PER 12". SIDEWALK AND CURB RAMPS SHALL BE CONSTRUCTED WITH A SIDE SLOPE OF 2.00%. SIDEWALK SHALL HAVE A MINIMUM LONGITUDINAL SLOPE OF 0.30% AND A MAXIMUM LONGITUDINAL SLOPE OF 3.00%.

EARTH WORK SUMMARY:

EXCAVATION CUT (MEASURED PLAN QUANTITY)	10,000 C.Y.
ESTIMATED UNDISTRIBUTED UNDERCUT	2,000 C.Y.
ESTIMATED BIO-INFILTRATION POND EXCAVATION CUT	1,250 C.Y.
TOTAL UNCLASSIFIED EXCAVATION CUT	13,250 C.Y.

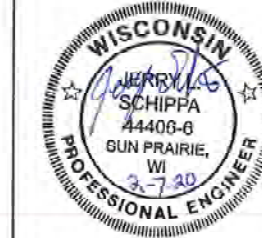
TRAFFIC CONTROL
DESIGNED BY:



STREET
DESIGNED BY:



ELECTRICAL
DESIGNED BY:



SANITARY SEWER
DESIGNED BY:



WATER MAIN
DESIGNED BY:



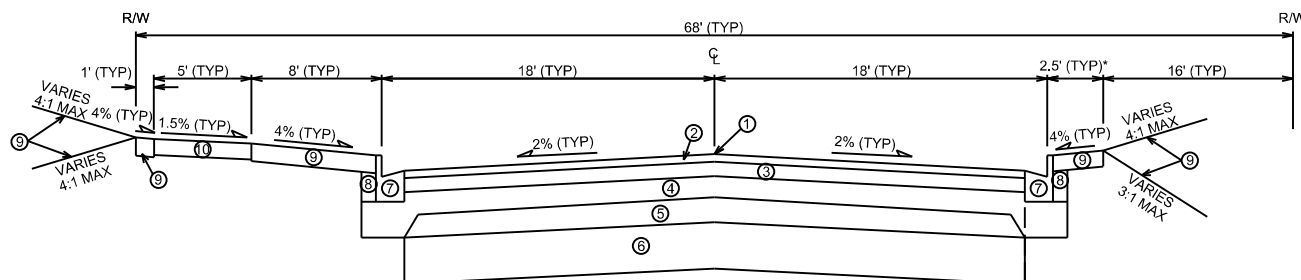
STORM SEWER
DESIGNED BY:



TYPICAL SECTION

DAIRY DRIVE

CITY OF MADISON

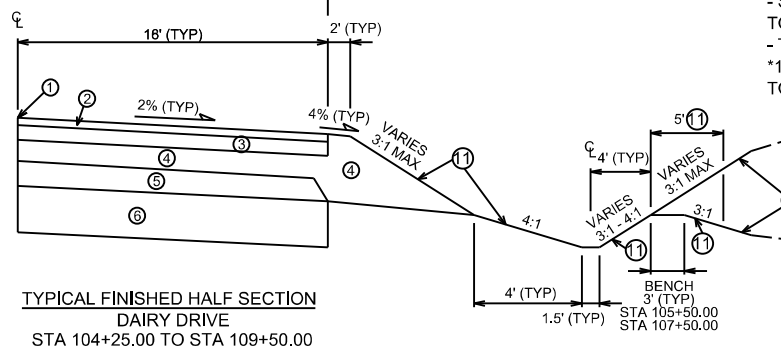


TYPICAL FINISHED SECTION
DAIRY DRIVE
STA 103+28.92 TO STA 117+11.77

- ① POINT REFERRED TO ON PROFILE
- ② 2" BITUMINOUS UPPER LAYER, 4 MT 58-28 S
- ③ 3 1/2" BITUMINOUS LOWER LAYER, 3 MT 58-28 S
- ④ 6" GRADATION 2 CRUSHED STONE
- ⑤ 6" GRADATION 1 CRUSHED STONE
- ⑥ 12" BREAKER RUN
- ⑦ TYPE 'A' CONCRETE CURB & GUTTER
- ⑧ FILL, INCIDENTAL
- ⑨ 6" TOPSOIL, TERRACE SEED & EROSION MAT, CLASS I, TYPE A - ORGANIC
- ⑩ 5" CONCRETE SIDEWALK
- ⑪ 6" TOPSOIL, COMMON NATIVE SEED MIX & EROSION MAT, CLASS II, TYPE C - ORGANIC

NOTES:

- SEE CROSS SECTIONS FOR CROSS SLOPES, TOP OF CURB ELEVATIONS, & SWALE LAYOUT.
- TYPICAL SECTION NOT TO SCALE.
- *1.5' TERRACE FROM STA 103+28.92 TO STA 103+90 RT.



TYPICAL FINISHED HALF SECTION
DAIRY DRIVE
STA 104+25.00 TO STA 109+50.00

PLOT SCALE: _____

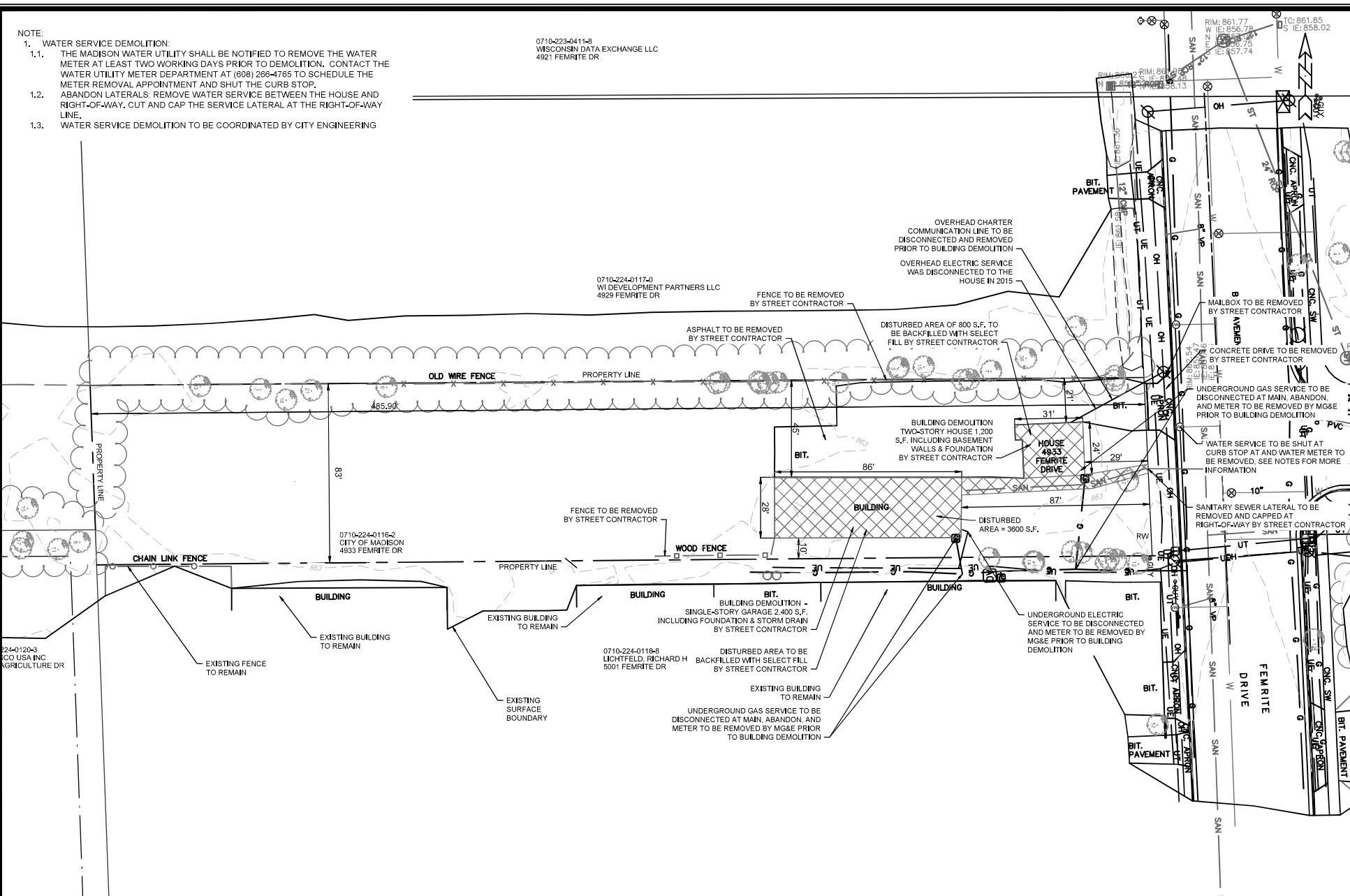
PLOT NAME: _____

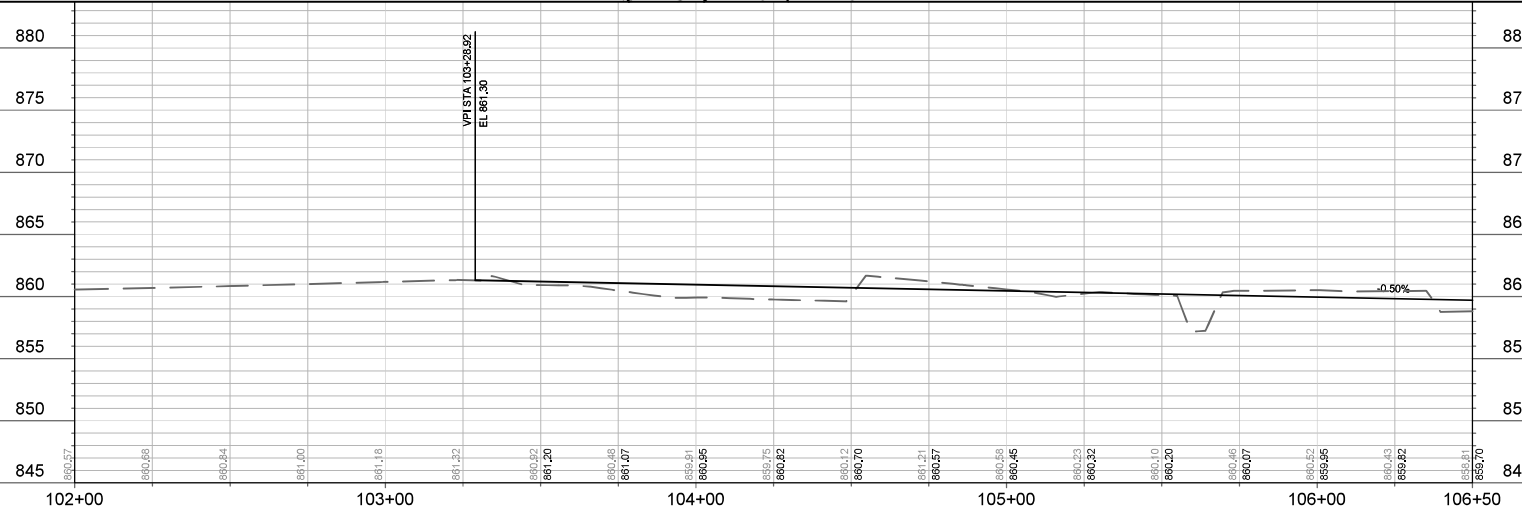
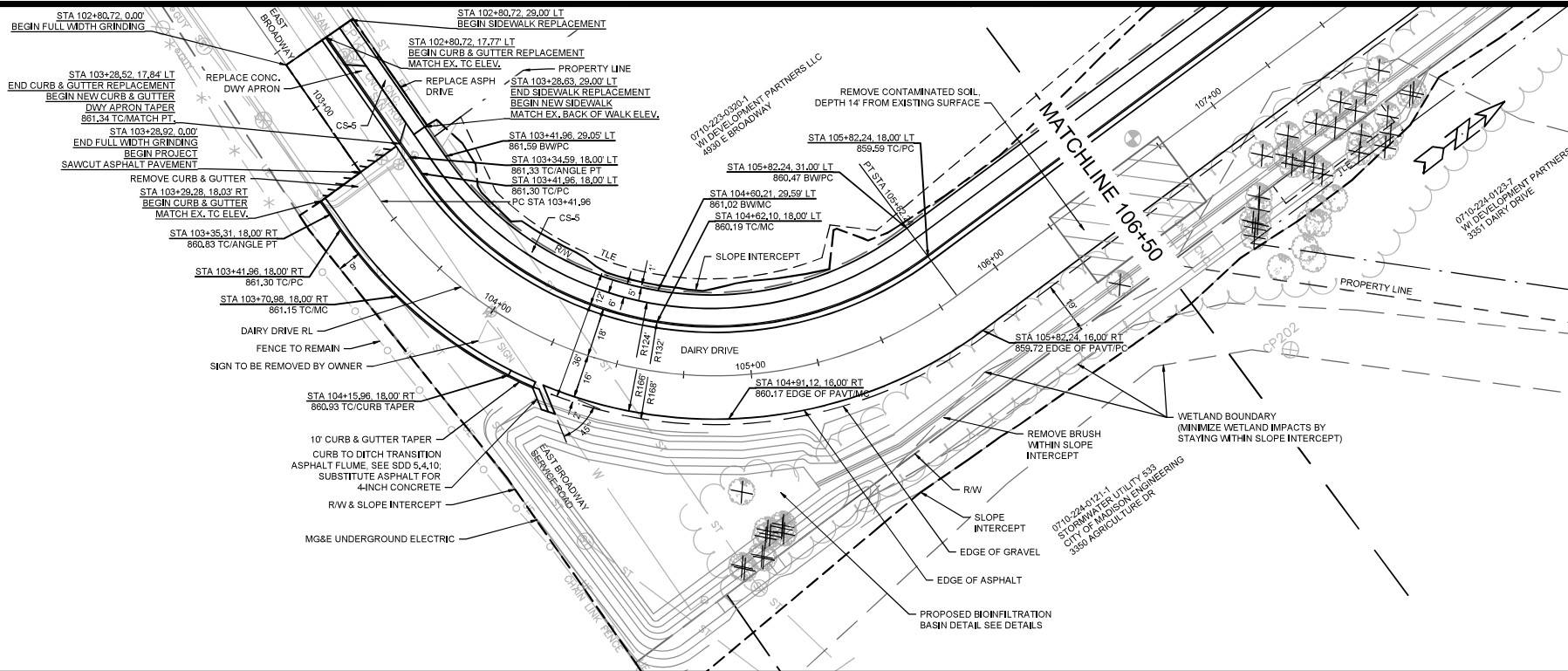
REV. DATE: _____

ORIGINATOR: CITY OF MADISON, STREETLIGHTS DIVISION

1. WATER SERVICE DEMOLITION:
 - 1.1. THE MADISON WATER UTILITY SHALL BE NOTIFIED TO REMOVE THE WATER METER AT LEAST TWO WORKING DAYS PRIOR TO DEMOLITION. CONTACT THE WATER UTILITY METER DEPARTMENT AT (608) 266-4765 TO SCHEDULE THE METER REMOVAL APPOINTMENT AND SHUT THE CURB STOP.
 - 1.2. ADDITIONAL LATERALS: REMOVE WATER SERVICE BETWEEN THE HOUSE AND RIGHT-OF-WAY, CUT AND CAP THE SERVICE LATERAL AT THE RIGHT-OF-WAY LINE.
 - 1.3. WATER SERVICE DEMOLITION TO BE COORDINATED BY CITY ENGINEERING

0710-223-0411-8
WISCONSIN DATA EXCHANGE LLC
4921 FEMRITE DR

[illegible]

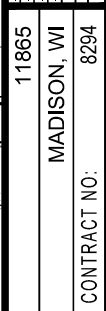


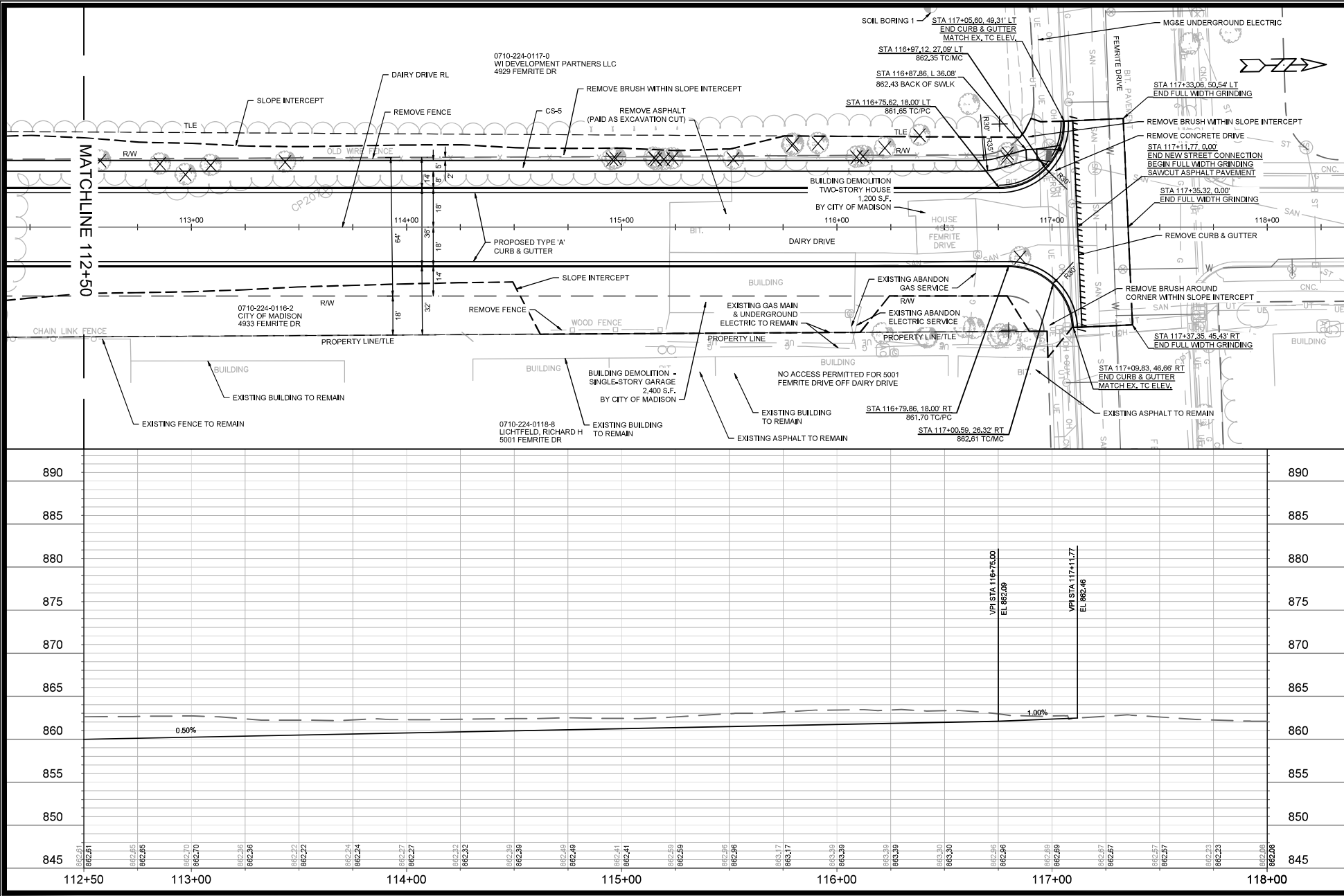
REVISION	DATE	BY
11865	2/17/2020	11865

11865
MADISON, WI
CONTRACT NO.: 8294

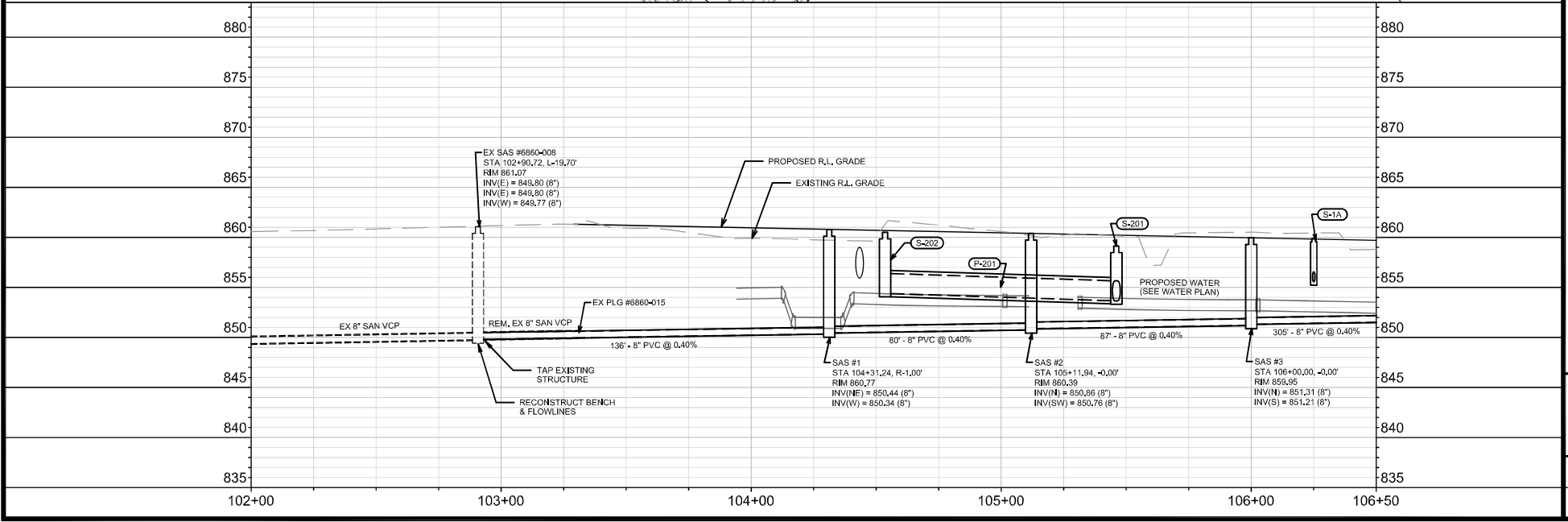
PLAN & PROFILE
DAIRY DRIVE (EAST BROADWAY TO FEMRITE DRIVE)
MADE SIGN Project 11865/CAD/Plan Sheets/11865E-N-Prp Dairy Cr.dwg




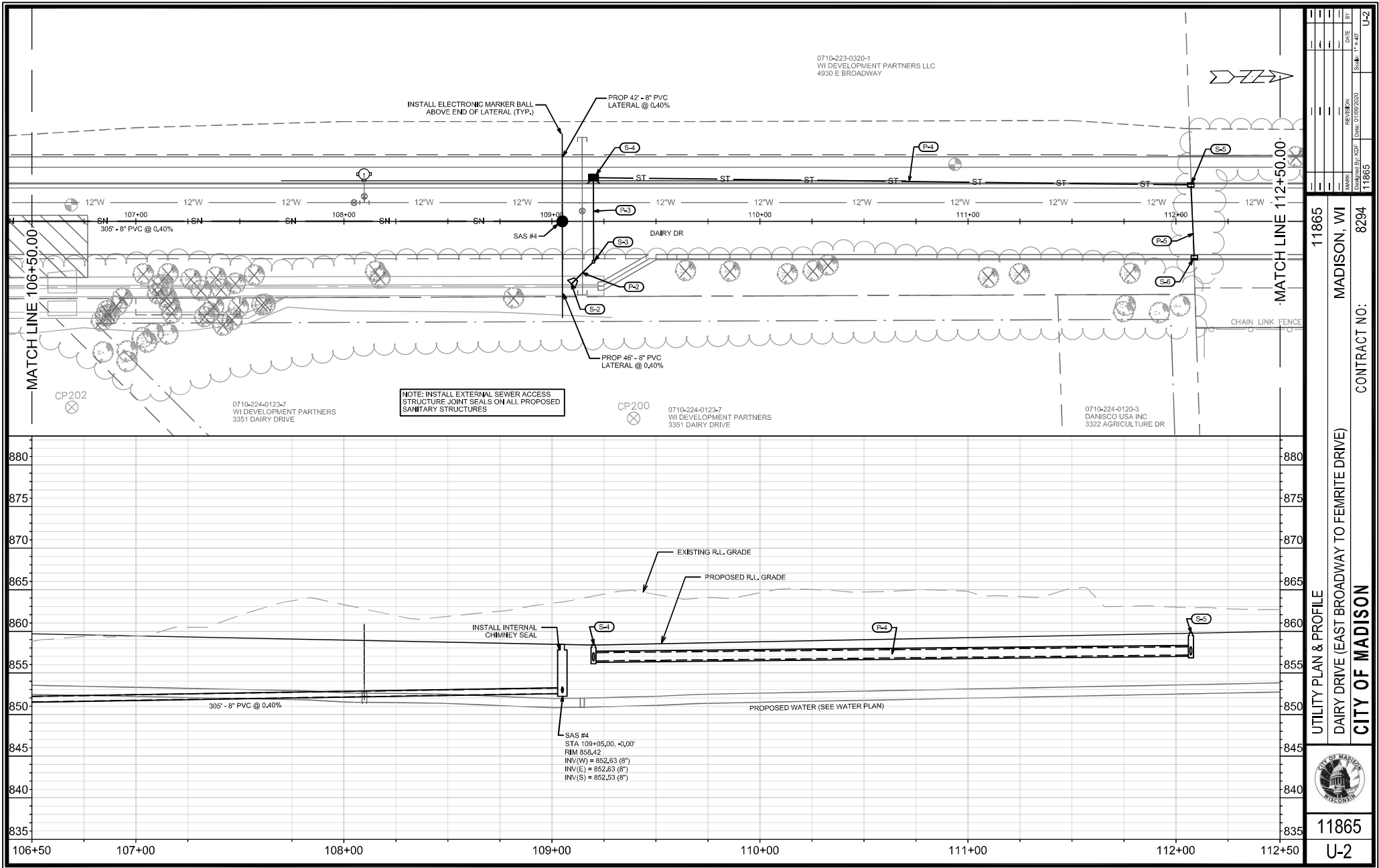


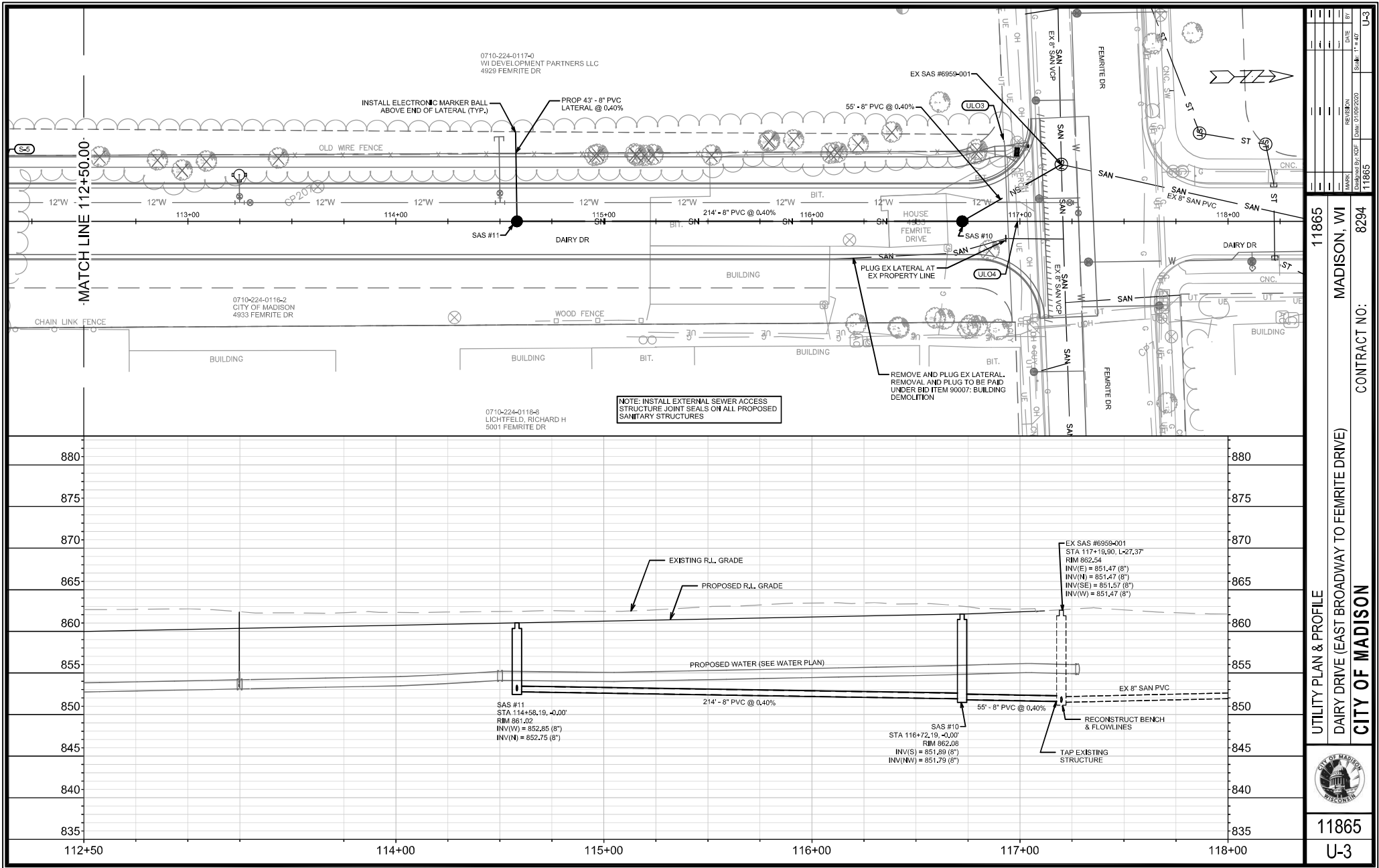


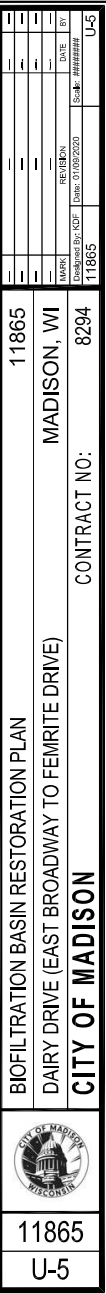
11865		MADISON, WI		CONTRACT NO. 8294	
PLAN AND PROFILE		DAIRY DRIVE (EAST BROADWAY TO FEMRITE DRIVE)		MADE SIGN Project 11865/CAD/Plan Sheets/11865E-N-Prp Dairy Dr.dwg	
P-3		P-3		P-3	



	11865	UTILITY PLAN & PROFILE	11865
	U-1	DAIRY DRIVE (EAST BROADWAY TO FEMRITE DRIVE)	MADISON, WI
CITY OF MADISON		CONTRACT NO:	8294
11865		MARK: _____ DESIGNED BY: RCF DATE: 01/09/2020 REV: (N/A) BY: _____ Scale: 1" = 40'	U-1







SANITARY SEWER SCHEDULE

DAIRY DRIVE
PROJECT NO. 11865

SHEET NO.
U-6

SANITARY SEWER SCHEDULE

CITY OF MADISON

PROPOSED SANITARY STRUCTURES

SAS NO.	STATION	LOCATION (OFFSET)	TOP OF CASTING	E.I.	DEPTH	NOTES
DAIRY DRIVE						
SAS #1	104+31.24	RT-1.00	860.77	850.34	10.43	[2]
SAS #2	105+11.94	CL	860.39	850.76	9.63	[2]
SAS #3	106+00.00	CL	859.95	851.21	8.74	[2]
SAS #4	109+05.00	CL	858.42	852.53	5.89	[1], [2]
SAS #10	116+72.19	CL	862.08	851.79	10.29	[2]
SAS #11	114+58.19	CL	861.02	852.75	8.27	[2]

PROPOSED SANITARY PIPES

FROM (DNSTM)	TO (UPSTM)	DWNSTRM E.I.	UPSTRM E.I.	PLAN (PAY) LGTH (FT)	SLOPE (%)	PIPE SIZE	PVC TYPE	NOTES
DAIRY DRIVE								
EX SAS #6860-008	SAS #1	849.80	850.34	136	0.40%	8"	SDR-35	-
SAS #1	SAS #2	850.44	850.76	80	0.40%	8"	SDR-35	-
SAS #2	SAS #3	850.86	851.21	87	0.40%	8"	SDR-35	-
SAS #3	SAS #4	851.31	852.53	305	0.40%	8"	SDR-35	-
EX SAS #6959-001	SAS #10	851.57	851.79	55	0.40%	8"	SDR-35	-
SAS #10	SAS #11	851.89	852.75	214	0.40%	8"	SDR-35	-

SANITARY PIPES REMOVALS & ABANDONMENTS

REMOVE FROM	REMOVE TO	LGTH (FT)	PIPE SIZE	PIPE TYPE	PAID (Y/N)	NOTES
DAIRY DRIVE						
EX SAS #6860-008	EX PLG #6860-015	40	8"	VCP	N	-

SPECIFIC NOTES

- [1] INSTALL INTERNAL CHIMNEY SEAL PER S.D.D. 5.7.17
[2] INSTALL EXTERNAL SEWER ACCESS STRUCTURE JOINT SEAL

STORM SEWER SCHEDULE

DAIRY DRIVE
PROJECT NO. 11865

SHEET NO.
U-7

STORM SEWER SCHEDULE

CITY OF MADISON

PROPOSED STORM STRUCTURES

STRUC. NO.	STATION	LOCATION (OFFSET)	TYPE	TOP OF CASTING	E.I.	DEPTH	NOTES
DAIRY DRIVE							
S-1	106+01.64	RT-30.70	12" RCP AE	-	855.30	-	W/GATE
S-1A	106+25.01	LT-17.50	H INLET	859.88	855.56	4.32	W/R-3067-7004-V
S-2	109+20.02	RT-30.25	12" RCP AE	-	856.20	-	W/GATE
S-3	109+20.00	RT-19.45	STORM BEND	-	856.23	-	45-DEGREE
S-4	109+20.00	LT-21.00	TERRACE INLET 3	858.41	856.44	1.97	[1]
S-5	112+07.14	LT-17.50	H INLET	859.83	857.15	2.68	W/R-3067-7004-V
S-6	112+08.83	RT-17.50	H INLET	859.83	857.31	2.52	W/R-3067-7004-V
S-101	104+75.27	RT-99.93	4X4 SAS	859.00	853.24	5.76	W/R-1550-0054
S-102	105+00.45	RT-116.47	30" RCP AE	-	853.35	-	W/GATE
S-200	105+56.20	RT-81.31	24"x38" HERCP AE	-	853.50	-	W/GATE
S-201	105+46.04	RT-20.68	4X4 SAS	859.14	853.65	5.49	W/R-1550-0054
S-202	104+53.55	RT-8.56	4X4 SAS	860.51	854.40	6.11	W/R-1550-0054
PS-2	104+78.27	RT-68.85	3' DIA SAS	856.50	853.50	3.00	[2]
PS-2A	105+06.77	RT-42.51	PIPE END	-	853.50	-	-
PS-3	104+45.18	RT-44.47	PIPE END	-	853.50	-	-

REMOVE STORM STRUCTURES

ID NO.	STATION	LOCATION (OFFSET)	TYPE	NOTES
DAIRY DRIVE				
AE #6960-003	105+11.60	RT-107.50	30" RCP AE	[3]
AS #6960-002	104+97.25	RT-79.00	SAS	[3]
AE #6960-001	105+00.50	RT-116.50	30" RCP AE	[3]

STORM SEWER ULOs (5 ADDITIONAL INDISTRIBUTED ULOs INCLUDED)

ULO NO.	STATION	LOCATION (OFFSET)	TYPE	TOP ELEV.	NOTES
DAIRY DRIVE					
ULO1	104+67.75	RT-101.80	ELECTRIC	-	-
ULO2	104+28.00	RT-53.00	ELECTRIC	-	-
ULO3	116+92.25	LT-39.00	TELE	-	-
ULO4	116+99.00	CL	ELECTRIC	-	-

PROPOSED STORM PIPES

PIPE NO.	FROM (DNSTM)	TO (UPSTM)	DISCH. E.I.	INLET E.I.	PLAN (PAY) LGTH (FT)	PIPE LGTH (FT)	SLOPE (%)	PIPE SIZE	TYPE	NOTES
DAIRY DRIVE										
P-1	S-1	S-1A	855.30	855.56	53.5	51.2	0.50%	12"	RCP	-
P-2	S-2	S-3	856.15	856.23	15	14.4	0.55%	12"	PRESSURE	-
P-3	S-3	S-4	856.23	856.44	40.5	38.8	0.55%	12"	PRESSURE	-
P-4	S-4	S-5	856.44	857.15	287	285.3	0.25%	12"	RCP	-
P-5	S-5	S-6	857.15	857.31	35	32	0.50%	12"	RCP	-
P-100	AS #6961-001	S-101	853.14	853.24	48	43.59	0.25%	30"	RCP	TAP EX STRUCT.
P-101	S-101	S-102	853.24	853.35	46.5	42.8	0.25%	30"	RCP	-
P-200	S-200	S-201	853.50	853.65	62	58.51	0.25%	24"x38"	RCP	-
P-201	S-201	S-202	853.65	854.40	100.5	96.37	0.78%	24"x38"	RCP	-
PP-1	AS #6961-001	PS-2	853.34	853.50	36.5	32.3	0.50%	12"	RCP	TAP EX STRUCT.
PP-2	PS-2	PS-3	853.50	853.50	51.5	50.05	0.00%	8"	UD	-
PP-2A	PS-2	PS-2A	853.50	853.50	47	45.5	0.00%	8"	UD	-

REMOVE STORM PIPES

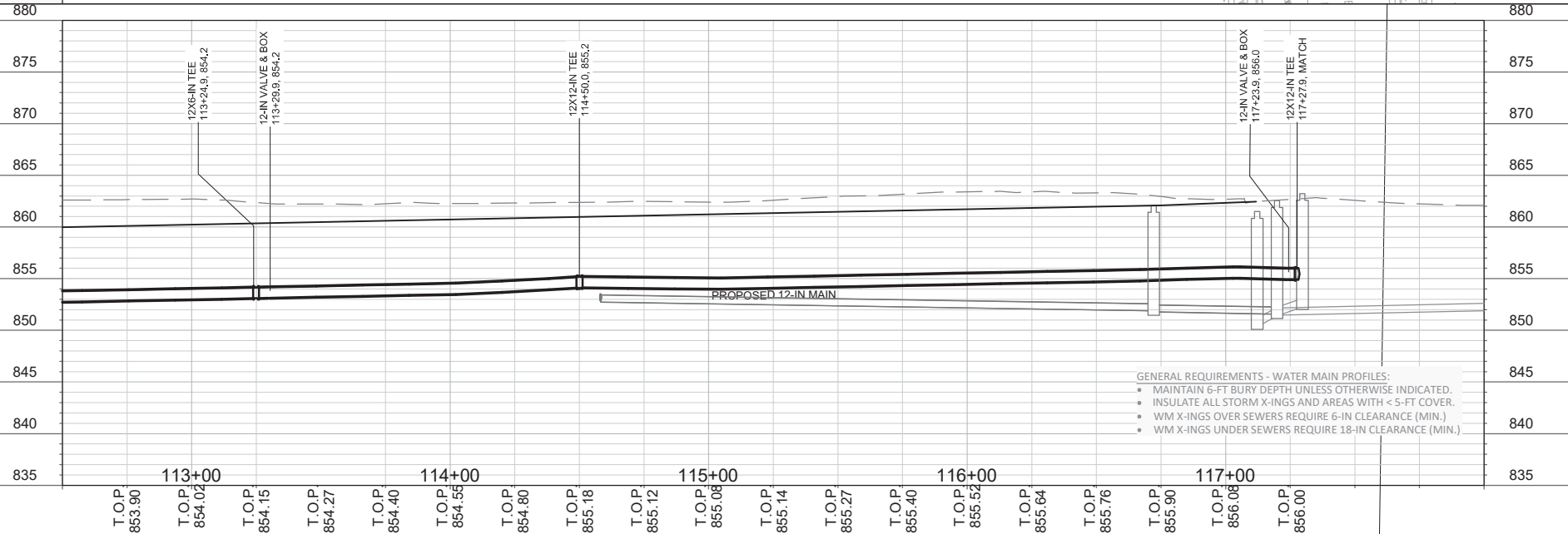
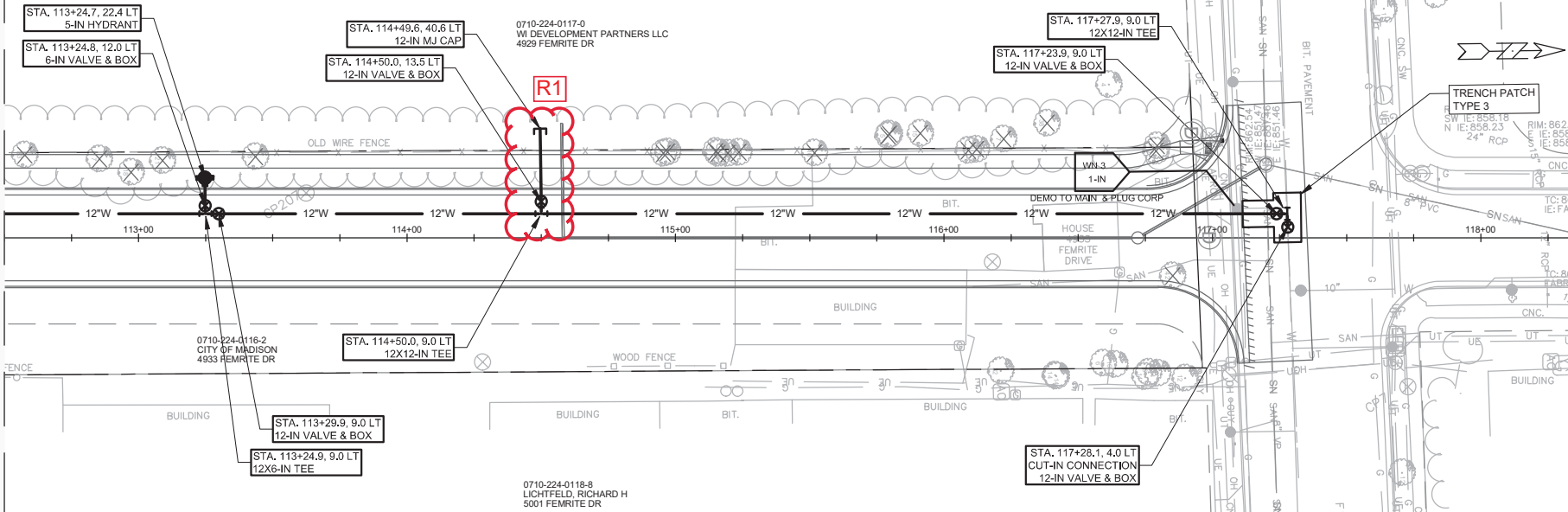
REMOVE FROM	REMOVE TO	LGTH (FT)	PIPE SIZE	PIPE TYPE	PAID (Y/N)	NOTES
DAIRY DRIVE						
AE #6960-003	AS #6960-002	36	30"	RCP	Y	-
AS #6960-002	S-202	86	30"	RCP	Y	-
AS #6961-001	AE #6960-001	88	30"	RCP	Y	-

NOTE: PLAN LENGTH (PAY LENGTH) IS FROM CENTER OF STRUCTURE TO CENTER OF STRUCTURE. PIPE LENGTH IS ACTUAL LENGTH OF PIPE FROM STRUCTURE WALL TO STRUCTURE WALL. SLOPE CALCULATED USING PIPE LENGTH.

STANDARD NOTES:

- ABBREVIATIONS: AE = APRON ENDWALL; RCP = REINFORCED CONCRETE PIPE; HERCP = HORIZONTAL ELLIPTICAL REINFORCED CONCRETE PIPE; DNA = DOES NOT APPLY; SAS = SEWER ACCESS STRUCTURE; LP = LOW POINT INLET STRUCTURE; FP = FIELD POURED STRUCTURE; TR = TOP OF CONCRETE ROOF; NCM = NO CROWN MATCH FOR PIPES; UD = UNDERDRAIN
- APPROXIMATE DISCHARGE E.I. GIVEN, ADJUST E.I. AND PIPE SLOPE IN THE FIELD.
- TOP OF CASTING GRADE GIVEN IS THE TOP OF CURB FOR INLET STRUCTURES AND THE FLOWLINE OF THE CLOSED CASTING FOR SAS's.
- TOP OF CONCRETE ROOF (TR) IS 1.25' BELOW TOP OF CASTING UNLESS OTHERWISE NOTED.
- ALL REINFORCED CONCRETE PIPES TO BE CLASS III UNLESS OTHERWISE NOTED.
- SURVEYOR TO CONFIRM THAT ALL INLET STATION / OFFSETS LINE UP WITH PROPOSED CURB AND GUTTER.
- ALL STRUCTURES CALLED OUT AS FIELD POURED SHALL BE FIELD POURED. ALL OTHER STRUCTURES (NOT INDICATED AS FIELD POURED) SHALL BE SUBMITTED TO CITY ENGINEERING FOR APPROVAL IF PRECAST STRUCTURES ARE PREFERRED. CONTACT KYLE FRANK OF CITY ENGINEERING AT (608) 266-4098 FOR PRECAST APPROVALS, FAX SHOP DRAWINGS TO (608)264-9275, OR EMAIL SHOP DRAWINGS TO KFRANK@CITYOFMADISON.COM.

MATCH LINE STA. 112+50



- GENERAL REQUIREMENTS - WATER MAIN PROFILES:
- MAINTAIN 6-FT BURY DEPTH UNLESS OTHERWISE INDICATED.
 - INSULATE ALL STORM X-INGS AND AREAS WITH < 5-FT COVER.
 - WM X-INGS OVER SEWERS REQUIRE 6-IN CLEARANCE (MIN.)
 - WM X-INGS UNDER SEWERS REQUIRE 18-IN CLEARANCE (MIN.)

	DAIRY DR	11865	W-3
	WATER PLAN & PROFILE - DAIRY DRIVE	CONTRACT NO:	8294
	CITY OF MADISON	MADISON, WI	11865
	4/7/2020 REVISION DATE BY Scale: 1"=40' FT	11865 W-3	

CONSTRUCTION NOTES:

- CONSTRUCT NEW WATER MAIN 6.0' BELOW FINISHED GRADE, UNLESS OTHERWISE NOTED. INSULATE MAIN WITH POLYSTYRENE BOARD AT UTILITY CROSSINGS OR OTHER AREAS IDENTIFIED BY ENGINEER AS HAVING INADEQUATE COVER.
 - VERIFY SIZE OF EXISTING WATER SERVICES AND RECONNECT SERVICES AS INDICATED.
 - MINIMIZE DISRUPTION OF SERVICE TO CUSTOMERS. NOTIFY PER CONTRACT REQUIREMENTS OF ANY PLANNED WATER OUTAGE.
 - THE EXISTING UTILITIES SHOWN ON THIS REPRESENT THE BEST INFORMATION AVAILABLE TO THE WATER UTILITY AT THE TIME OF PLAN REPARATION. CONTRACTOR IS RESPONSIBLE OR HAVING EACH UTILITY LOCATED PRIOR TO COMMENCING WORK.
- | | |
|--------|---|
| WN1 | REPLACE THE EXISTING LEAD SERVICE WITH A NEW COPPER SERVICE. |
| WN-2 | EXTEND AND RECONNECT THE EXISTING COPPER SERVICE TO THE NEW WATER MAIN. |
| WN-3 | EXISTING SERVICE TO BE ABANDONED WHEN THE WATER MAIN IS CUT OFF. |
| WN-4 | DISCONNECT FROM THE OLD WATER MAIN AND RECONNECT THE EXISTING COPPER WATER SERVICE LATERAL TO THE NEW WATER MAIN. |
| WN-5 | RELOCATE THE EXISTING FIRE HYDRANT. |
| WN-6 | ABANDON WATER VALVE ACCESS STRUCTURE. |
| WN-7 | FURNISH AND INSTALL THE NEW TOP SECTION FOR THE WATER ACCESS STRUCTURE. |
| WN-8 | ABANDON THE VALVE BOX. |
| WN-9 | FURNISH THE DITCH, COMPACTION, AND ALL MATERIALS AND LABOR FOR THE INSTALLATION OF NEW SERVICE LATERAL. |
| WN-10 | REMOVE AND SALVAGE EXISTING HYDRANT |
| WN-11 | REPLACE THE EXISTING COPPER SERVICE WITH A COPPER SERVICE |
| WN-20+ | SEE WATER IMPACT PLAN FOR CONNECTION POINT ISOLATION AND WATER SHUT-OFF NOTIFICATION INFORMATION. |

WATER UTILITY ULO SCHEDULE:

ULO	UTILITY	STATION	OFFSET	SHEET
-----	---------	---------	--------	-------

*ESTIMATE OF MATERIALS SUPPLIED BY CONTRACTOR:

ITEM ID	DESCRIPTION	QUANTITY	UNIT
70002	FURNISH AND INSTALL 6-INCH PIPE & FITTINGS	40	LNFT
70003	FURNISH AND INSTALL 8-INCH PIPE & FITTINGS	115	LNFT
70005	FURNISH AND INSTALL 12-INCH PIPE & FITTINGS	1440	LNFT
70031	FURNISH AND INSTALL 6-INCH WATER VALVE	3	EACH
70032	FURNISH AND INSTALL 8-INCH WATER VALVE	4	EACH
70034	FURNISH AND INSTALL 12-INCH WATER VALVE	4	EACH
70040	FURNISH INSTALL AND SALVAGE HYDRANT	3	EACH
70101	FURNISH AND INSTALL STYROFOAM	32	LNFT
71002	8-IN MJ CAP	4	EACH
71048	12X8-IN CROSS	1	EACH
71125	12-IN 45° BEND	5	EACH
71137	12-IN 22-1/2° BEND	1	EACH
71149	12-IN 11-1/4° BEND	2	EACH
71165	12X8-IN REDUCER	1	EACH
71217	12X6-IN TEE	3	EACH
71218	12X8-IN TEE	1	EACH
71220	12X12-IN TEE	1	EACH

*ESTIMATE OF MATERIALS SUPPLIED BY WATER UTILITY:

--	--	--	--

*ESTIMATE OF MATERIALS SALVAGED:

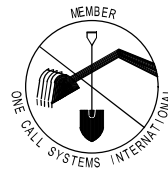
--	--	--	--

* ESTIMATE OF MATERIALS IS FOR INFORMATION ONLY. ENGINEER DOES NOT GUARANTEE ACCURACY OF MATERIAL TAKE-OFF.

TO OBTAIN LOCATION OF PARTICIPANTS' UNDERGROUND FACILITIES BEFORE YOU DIG IN WISCONSIN

CALL DIGGERS HOTLINE
TOLL FREE
811 OR 1-800-242-8511
FAX-A-LOCATE 1-800-338-3860
TDD (FOR HEARING IMPAIRED) 1-800-542-2289

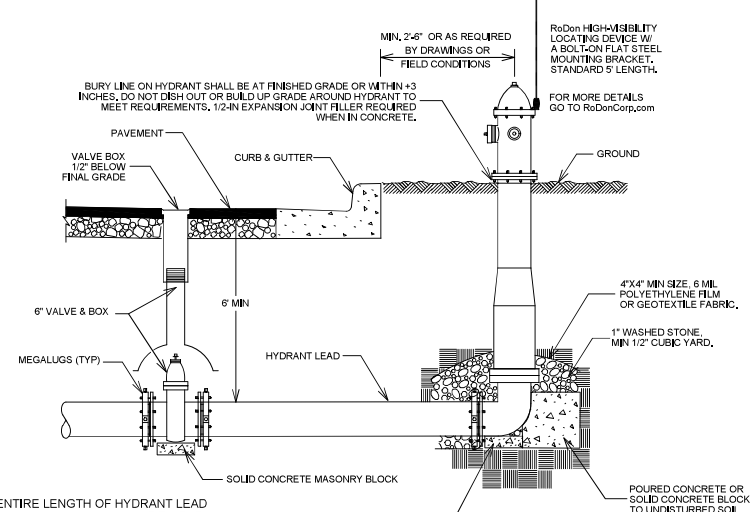
WIS. STATUTE 182.0175 (1974)
REQUIRES MIN. OF 3 WORK DAYS
NOTICE BEFORE YOU EXCAVATE.



DISCLAIMER NOTE: UTILITY LOCATIONS SHOWN ARE APPROXIMATE ONLY. IT SHALL BE THE CONTRACTOR'S RESPONSIBILITY TO DETERMINE THE EXACT HORIZONTAL AND VERTICAL LOCATION OF ALL EXISTING UNDERGROUND AND OVERHEAD UTILITIES PRIOR TO COMMENCING WORK.

PART VII - WATER MAINS AND SERVICE LATERALS

DETAIL DRAWING NO. 7.04
REVISED: 12/2018



NOTE:

- RESTRAIN ENTIRE LENGTH OF HYDRANT LEAD FROM THE TEE THROUGH THE VALVE TO THE HYDRANT AS SPECIFIED USING JOINT RESTRAINTS PER SECTION 703.10

CITY OF MADISON
WATER UTILITY

NOT TO SCALE

TYPICAL HYDRANT INSTALLATION

DATE	BY	REVISION	DATE	BY
11/15/2018	11865	11865	11/15/2018	11865

11865
MADISON, WI
8294

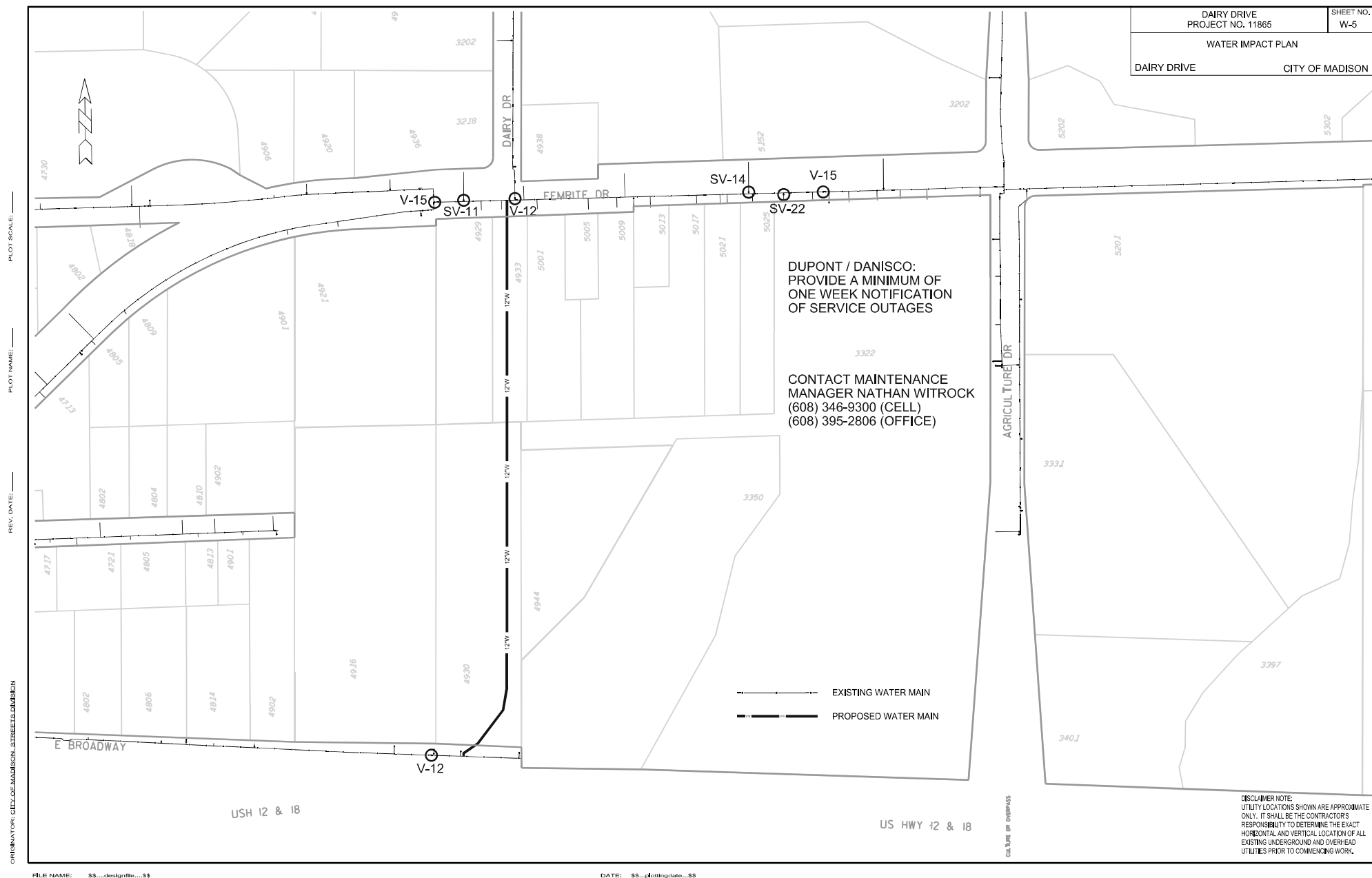
CONTRACT NO.:

DAIRY DRIVE
WATER ESTIMATE OF MATERIALS
CITY OF MADISON



11865

W-4



PLOT SCALE:

PLOT NAME:

REV. DATE:

OPERATOR: CITY OF MADISON, TRAFFIC ENG. DIV.

FILE NAME: \$\$...designfile...\$\$

DATE: \$\$...plottingdate...\$\$

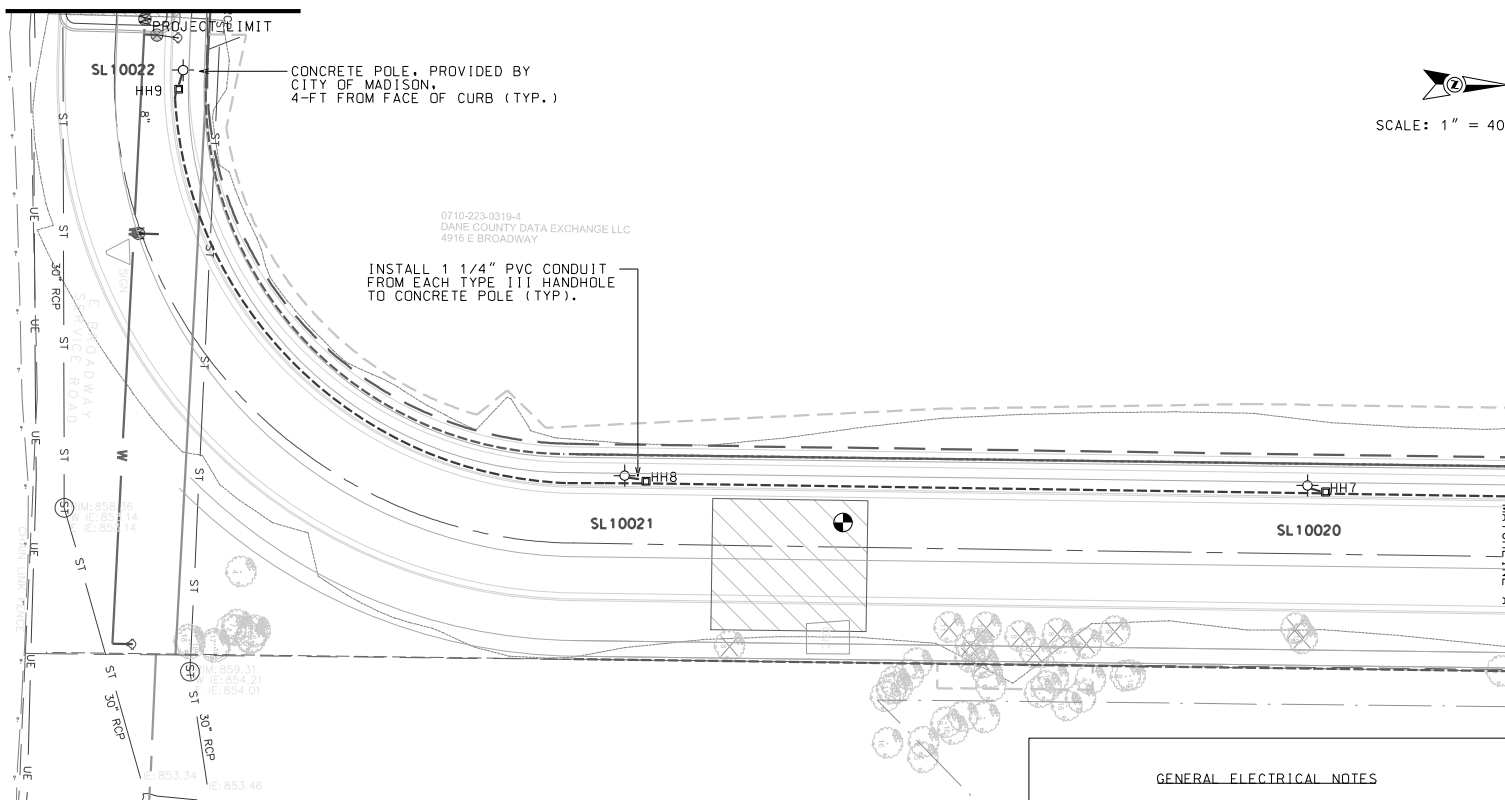
PROJECT 11865

SHEET NO.
E-1


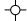


ELECTRICAL PLANS

DAIRY DRIVE

CITY OF MADISON

JLS 11/25/2019
JLS 12/5/2019

LEGEND

-  EXISTING LB-3 STREET LIGHT BASE
-  INSTALL CONCRETE POLE (PROVIDED BY CITY)
-  INSTALL TYPE I HANDHOLE
-  INSTALL TYPE III HANDHOLE
-

GENERAL ELECTRICAL NOTES

1. ALL LOCATIONS ARE APPROXIMATE. THE TRAFFIC ENGINEER SHALL APPROVE FINAL LOCATIONS, INCLUDING SETBACK, IN THE FIELD AFTER CONTRACTOR SURVEYS STAKING. THE CONTRACTOR SHALL NOTIFY JERRY SCHIPPA (267-1969) CITY TRAFFIC ENGINEERING, AT LEAST 24-HRS IN ADVANCE OF NEEDING CONDUIT OR BASE LOCATIONS MARKED.
2. THE CONTRACTOR SHALL DO ALL WORK IN ACCORDANCE WITH "CITY OF MADISON STANDARD SPECIFICATIONS FOR PUBLIC WORKS CONSTRUCTION 2020 EDITION" AND ALL ADDENDUMS THERETO. ALL CONDUIT SHALL BE PVC, SCHEDULE 80 UNDER PAVEMENT OR SCHEDULE 40 OTHERWISE, PULL WIRE REQUIRED AS PER STANDARD SPECIFICATIONS.
3. THE CONTRACTOR SHALL CALL MIKE BENZSCHAWEL (266-9031) AT THE TRAFFIC ENGINEERING SHOP AT LEAST 24-HRS IN ADVANCE OF INSTALLING CONDUIT, POLES, OR HANDHOLES TO ARRANGE FOR INSPECTION.
4. ANY WORK COMPLETED WITHOUT INSPECTION IS SUBJECT TO REJECTION.
5. THE CONTRACTOR SHALL ARRANGE FOR PICK UP OF THE FOLLOWING CITY FURNISHED MATERIALS, WHICH SHOULD BE ARRANGE FOR PICK UP BY CALLING ED SMITH, TRAFFIC ENGINEERING SHOP, 266-9034 1120 SAYLE ST., AT LEAST 24-HRS PRIOR TO NEEDING MATERIALS:
 - 7 CONCRETE STREET LIGHT POLES

PLOT SCALE:

PLOT NAME:

REV. DATE:

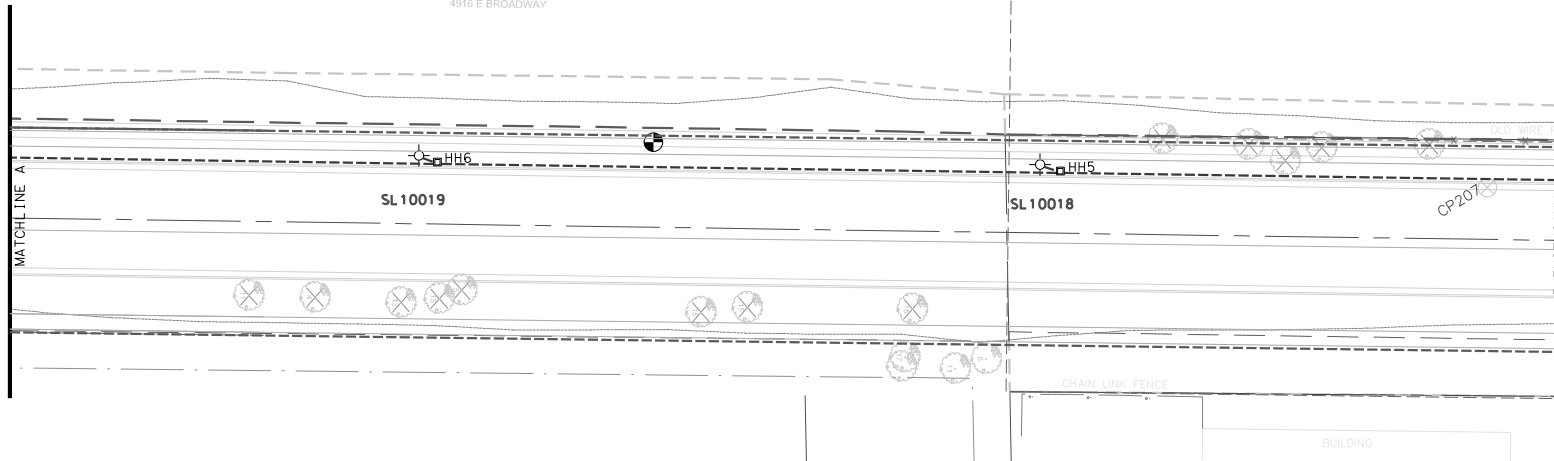
ORIGINATOR: CITY OF MADISON, TRAFFIC ENG. DIV.

PROJECT 11865	SHEET NO. E-2
ELECTRICAL PLANS	
DAIRY DRIVE	CITY OF MADISON
JLS 11/25/2019 JLS 12/5/2019	



SCALE: 1" = 40'

0710-223-0318-4
DANE COUNTY DATA EXCHANGE LLC
4916 E BROADWAY



LEGEND

- EXISTING LB-3 STREET LIGHT BASE
- INSTALL CONCRETE POLE (PROVIDED BY CITY)
- INSTALL TYPE I HANDHOLE
- INSTALL TYPE III HANDHOLE
- INSTALL (1) - 2" PVC CONDUIT, SCHEDULE 40 (UNLESS OTHERWISE NOTED)

FILE NAME: \$\$...designfile...\$\$

DATE: \$\$...plottingdate...\$\$

