

Location Map
3817 Milwaukee Street – Woodman's East
Contract 8915, Project 12967

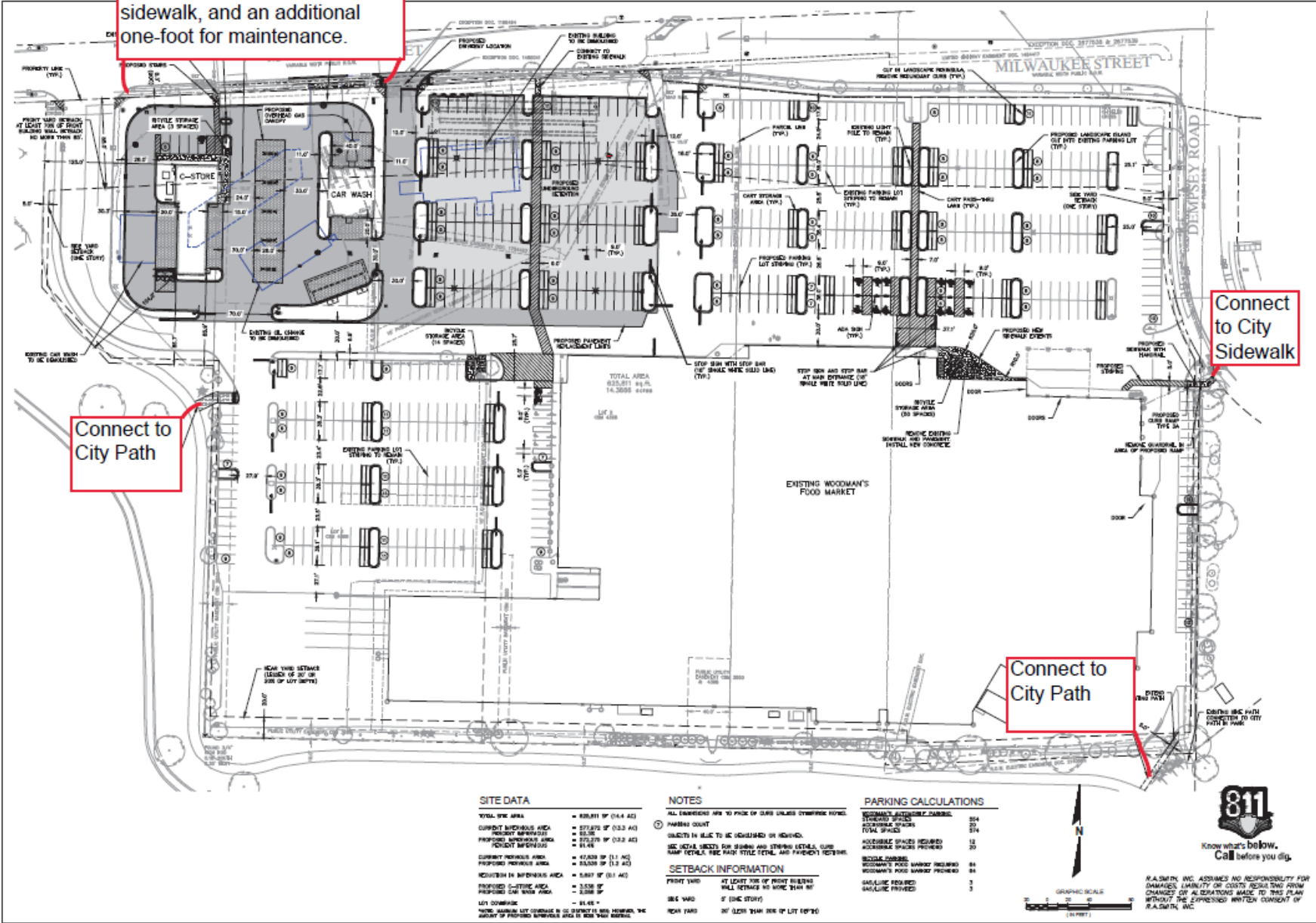


Public Sidewalk Easement to provide for the construction of an eight-foot terrace, five-foot sidewalk, and an additional one-foot for maintenance.

Connect to City Sidewalk

Connect to City Path

Connect to City Path



SITE DATA	
TOTAL SITE AREA	= 83,611 SF (0.44 AC)
CURRENT IMPROVED AREA	= 87,275 SF (0.32 AC)
PROPOSED IMPROVED AREA (EXCLUDING DRIVEWAYS)	= 81,441
CURRENT PAVED AREA	= 47,828 SF (1.1 AC)
PROPOSED PAVED AREA	= 54,538 SF (1.2 AC)
SECTIONS IN IMPROVED AREA	= 5,807 SF (0.13 AC)
PROPOSED CURB CUT AREA	= 3,328 SF
PROPOSED CAR WASH AREA	= 2,598 SF
LOT COVER	= 61.4%

NOTES	
1	ALL DIMENSIONS ARE TO FACE UNLESS OTHERWISE NOTED.
2	PARKING COUNT
3	OBJECTS IN BLUE TO BE DEMOLISHED OR MOVED.
4	SEE DETAIL SHEETS FOR SIGNING AND STRIPING DETAILS, CURB RAMP DETAILS, FIRE PUMP INTAKE DETAILS, AND PARKING RESERVES.
SETBACK INFORMATION	
FRONT YARD	AT LEAST 30% OF FRONT BUILDING SHALL RETRAVE NO MORE THAN 10'
SIDE YARD	5' (ONE STORY)
REAR YARD	10' (LESS THAN SIDE OF LOT 60%)

PARKING CALCULATIONS	
WOODMAN'S APPROXIMATE PARKING	554
STANDARD SPACES	25
ACCESSIBLE SPACES	374
TOTAL SPACES	579
ACCESSIBLE SPACES REQUIRED	12
ACCESSIBLE SPACES PROVIDED	25
BICYCLE PARKING	44
WOODMAN'S POOL BAR/BEER REQUIRED	44
WOODMAN'S POOL BAR/BEER PROVIDED	44
GARAGE PROVIDED	3
GARAGE PROVIDED	3

DATE	DESCRIPTION

16148 W. Bancroft Road
Brookfield, WI 53005-5935
(262) 791-1000
raSmith.com

raSmith
CREATIVITY THROUGH ENGINEERING

Woodman's Food Market, Madison, WI | Dempsey Road, Madison, WI | Greening WI
1000 Westport, WI 53188-1111 | www.raSmith.com

WOODMAN'S FOOD MARKET
3817 MILWAUKEE STREET, MADISON, WI

OVERALL SITE PLAN

© COPYRIGHT 2020
R.S. Smith, Inc.
DATE 02/09/2020
SCALE 1" = 40'
JOB NO. 8190288
PROJECT MANAGER: PAUL V. MELNIAK, P.E.
DESIGNED BY: AJS
CHECKED BY: PVM
SHEET NUMBER
C200