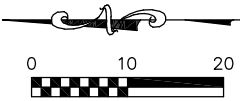
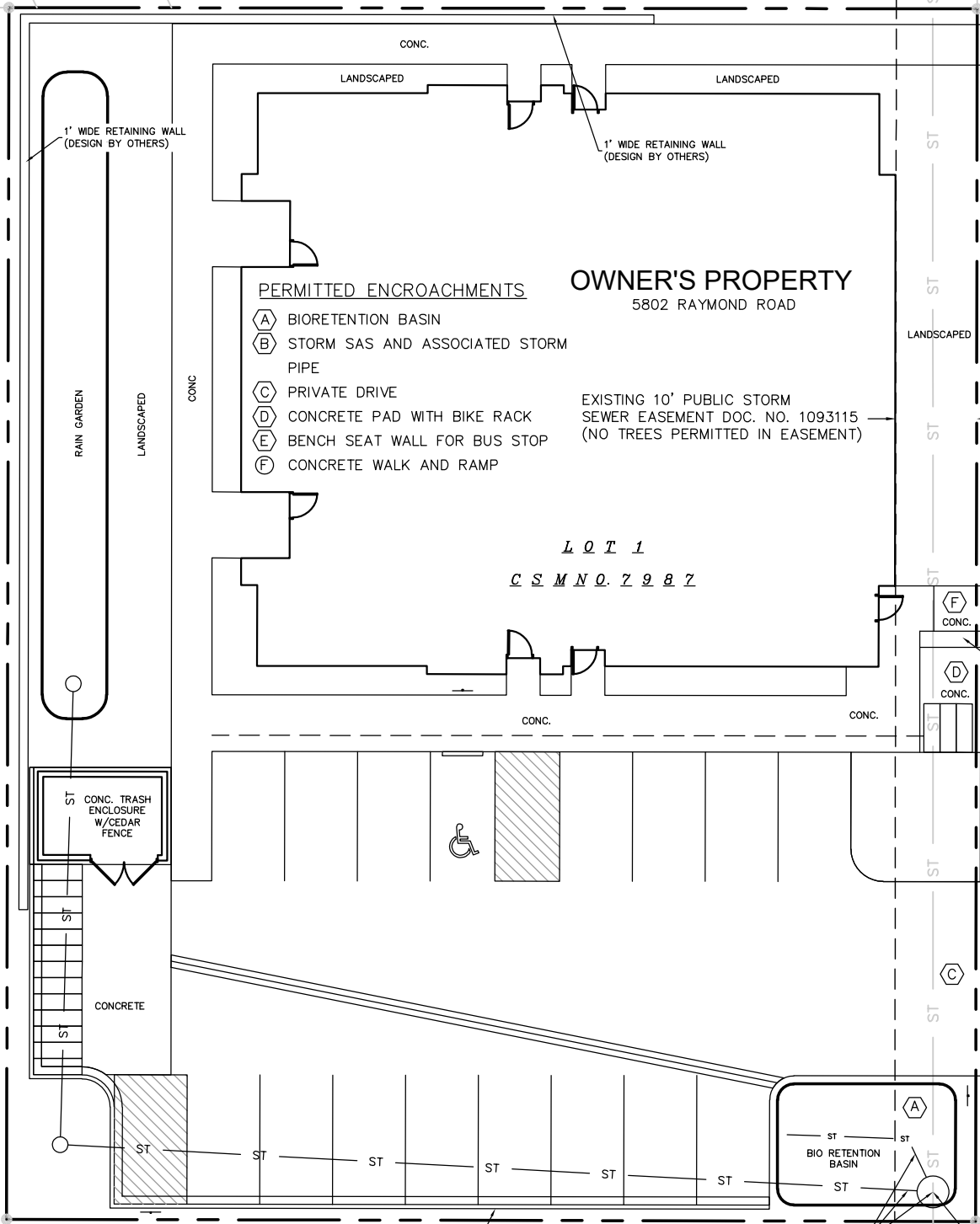


EXHIBIT B
Owner's Property, City Easement,
Permitted Encroachments



5750 RAYMOND ROAD



PERMITTED ENCROACHMENTS

- (A) BIORETENTION BASIN
- (B) STORM SAS AND ASSOCIATED STORM PIPE
- (C) PRIVATE DRIVE
- (D) CONCRETE PAD WITH BIKE RACK
- (E) BENCH SEAT WALL FOR BUS STOP
- (F) CONCRETE WALK AND RAMP

OWNER'S PROPERTY
 5802 RAYMOND ROAD

EXISTING 10' PUBLIC STORM SEWER EASEMENT DOC. NO. 1093115 (NO TREES PERMITTED IN EASEMENT)

LOT 1
C S M N O. 7 9 8 7

1' WIDE RETAINING WALL (DESIGN BY OTHERS)

1' WIDE RETAINING WALL (DESIGN BY OTHERS)

RAIN GARDEN

CONC. TRASH ENCLOSURE W/ CEDAR FENCE

CONCRETE

(F) CONC.

(D) CONC.

(E)

(C)

(A) BIORETENTION BASIN

(B)

48" DIA. STORM SAS SADDLED OVER 24" RCP

18' REJECT CURB & GUTTER

BUS STOP PAD

RAYMOND ROAD

5806 RAYMOND ROAD

Burse Surveying & Engineering, Inc. 2801 International Lane, Suite 101 Madison, WI 53704 608.250.9263