

# EXHIBIT C

## SITE PLAN AND TEMPORARY STORM SEWER EASEMENT EXHIBIT

LOT 1  
DOC. #4872034

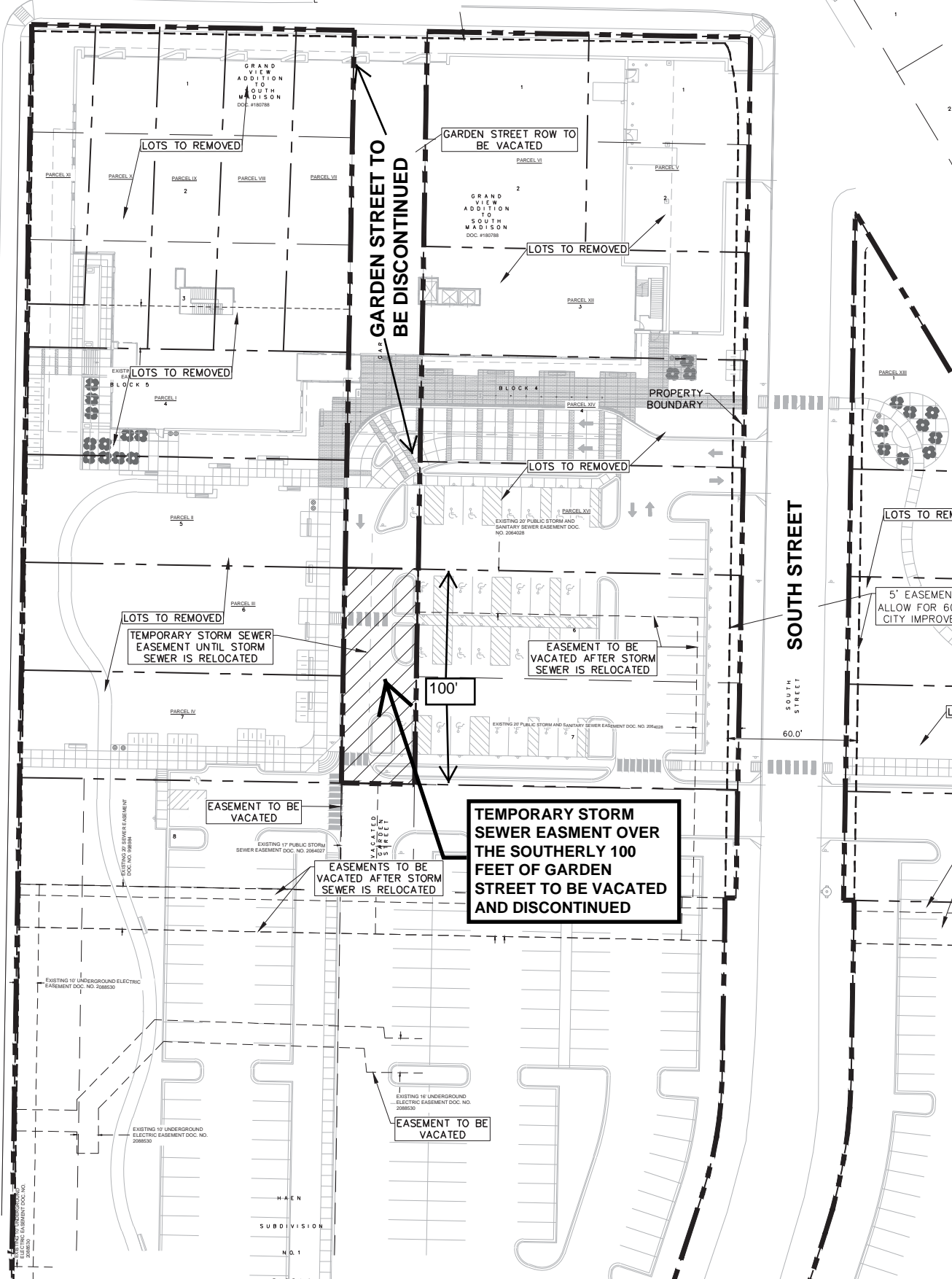
MIDLAND STREET

MIDLAND STREET

FISH HATCHERY ROAD

FISH HATCHERY ROAD

SOUTH STREET



GARDEN STREET TO BE DISCONTINUED

GARDEN STREET ROW TO BE VACATED

LOTS TO BE REMOVED

LOTS TO BE REMOVED

EXISTING BLOCK 5  
LOTS TO BE REMOVED

LOTS TO BE REMOVED

PROPERTY BOUNDARY

LOTS TO BE REMOVED

TEMPORARY STORM SEWER EASEMENT UNTIL STORM SEWER IS RELOCATED

EASEMENT TO BE VACATED AFTER STORM SEWER IS RELOCATED

100'

TEMPORARY STORM SEWER EASEMENT OVER THE SOUTHERLY 100 FEET OF GARDEN STREET TO BE VACATED AND DISCONTINUED

EASEMENT TO BE VACATED

EASEMENTS TO BE VACATED AFTER STORM SEWER IS RELOCATED

EASEMENT TO BE VACATED

LOTS TO BE REMOVED

5' EASEMENT ALLOW FOR 61 CITY IMPROVE

60.0'

HAEN SUBDIVISION NO. 1 BLOCK 1

EXISTING 17 UNDERGROUND ELECTRIC EASEMENT DOC. NO. 2088530

EXISTING 12 UNDERGROUND ELECTRIC EASEMENT DOC. NO. 2088530

EXISTING 10 UNDERGROUND ELECTRIC EASEMENT DOC. NO. 2088530

EXISTING 20 UNDERGROUND ELECTRIC EASEMENT DOC. NO. 99484

EXISTING 17 PUBLIC STORM AND SANITARY SEWER EASEMENT DOC. NO. 2064027

EXISTING 20 PUBLIC STORM AND SANITARY SEWER EASEMENT DOC. NO. 2064028

EXISTING 20 PUBLIC STORM AND SANITARY SEWER EASEMENT DOC. NO. 2064028

EXISTING 20 PUBLIC STORM AND SANITARY SEWER EASEMENT DOC. NO. 2064028

EXISTING 20 PUBLIC STORM AND SANITARY SEWER EASEMENT DOC. NO. 2064028

EXISTING 20 PUBLIC STORM AND SANITARY SEWER EASEMENT DOC. NO. 2064028

EXISTING 20 PUBLIC STORM AND SANITARY SEWER EASEMENT DOC. NO. 2064028

EXISTING 20 PUBLIC STORM AND SANITARY SEWER EASEMENT DOC. NO. 2064028

EXISTING 20 PUBLIC STORM AND SANITARY SEWER EASEMENT DOC. NO. 2064028

EXISTING 20 PUBLIC STORM AND SANITARY SEWER EASEMENT DOC. NO. 2064028

EXISTING 20 PUBLIC STORM AND SANITARY SEWER EASEMENT DOC. NO. 2064028

EXISTING 20 PUBLIC STORM AND SANITARY SEWER EASEMENT DOC. NO. 2064028

EXISTING 20 PUBLIC STORM AND SANITARY SEWER EASEMENT DOC. NO. 2064028

EXISTING 20 PUBLIC STORM AND SANITARY SEWER EASEMENT DOC. NO. 2064028

EXISTING 20 PUBLIC STORM AND SANITARY SEWER EASEMENT DOC. NO. 2064028

EXISTING 20 PUBLIC STORM AND SANITARY SEWER EASEMENT DOC. NO. 2064028