

TWO POINT CROSSING CSM – LOT 4 FUTURE PHASE

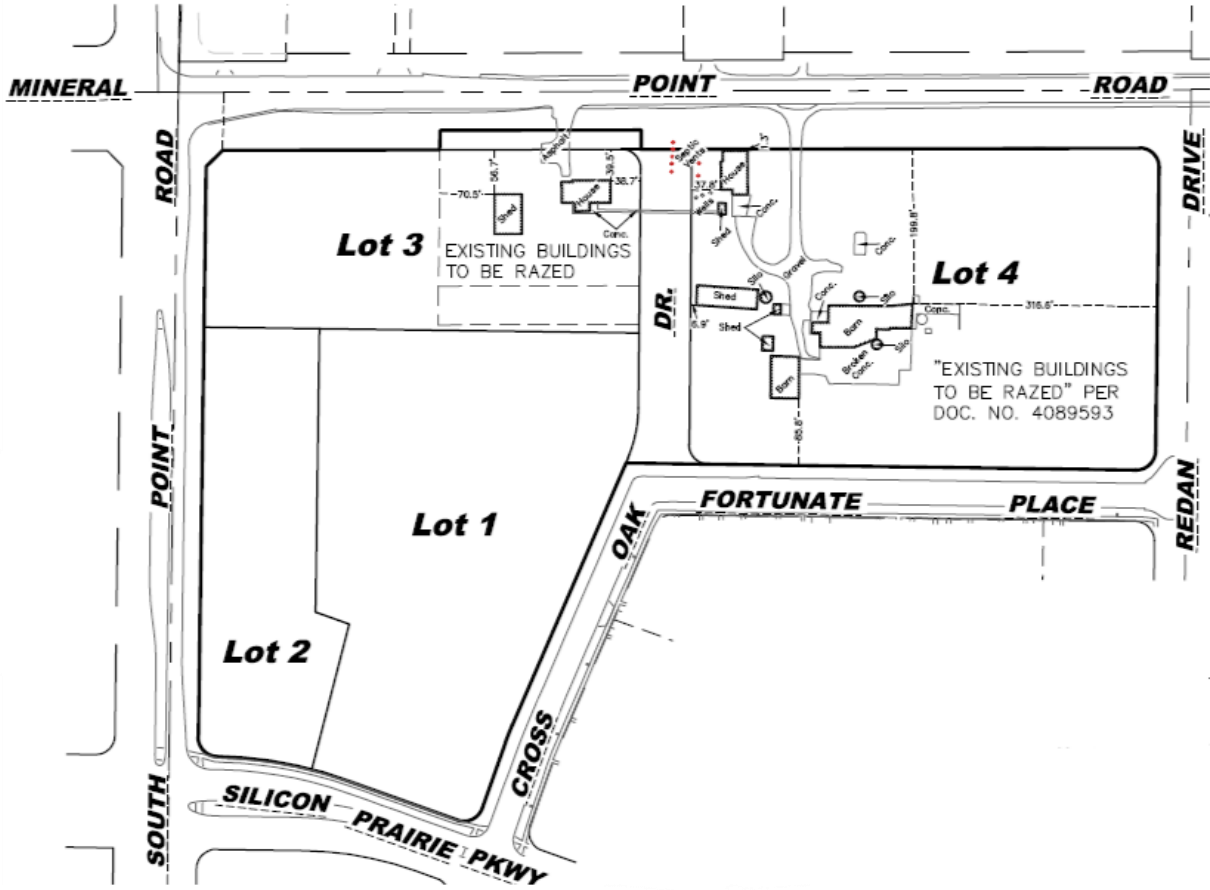
(9301-9317 Mineral Point Road and 9450 Silicon Prairie Parkway)

Contract 8886

Project Location Map



TWO POINT CROSSING CSM – LOT 4 FUTURE PHASE
(9301-9317 Mineral Point Road and 9450 Silicon Prairie Parkway)
Contract 8886



Future Improvements to Serve Lots 4

- *Public Sidewalk Installation Adjacent to Lot 4
Fortunate Place
Redan Drive

- *Multi-use path (10' in width) along Mineral Point Rd (adj. to Lot 4)