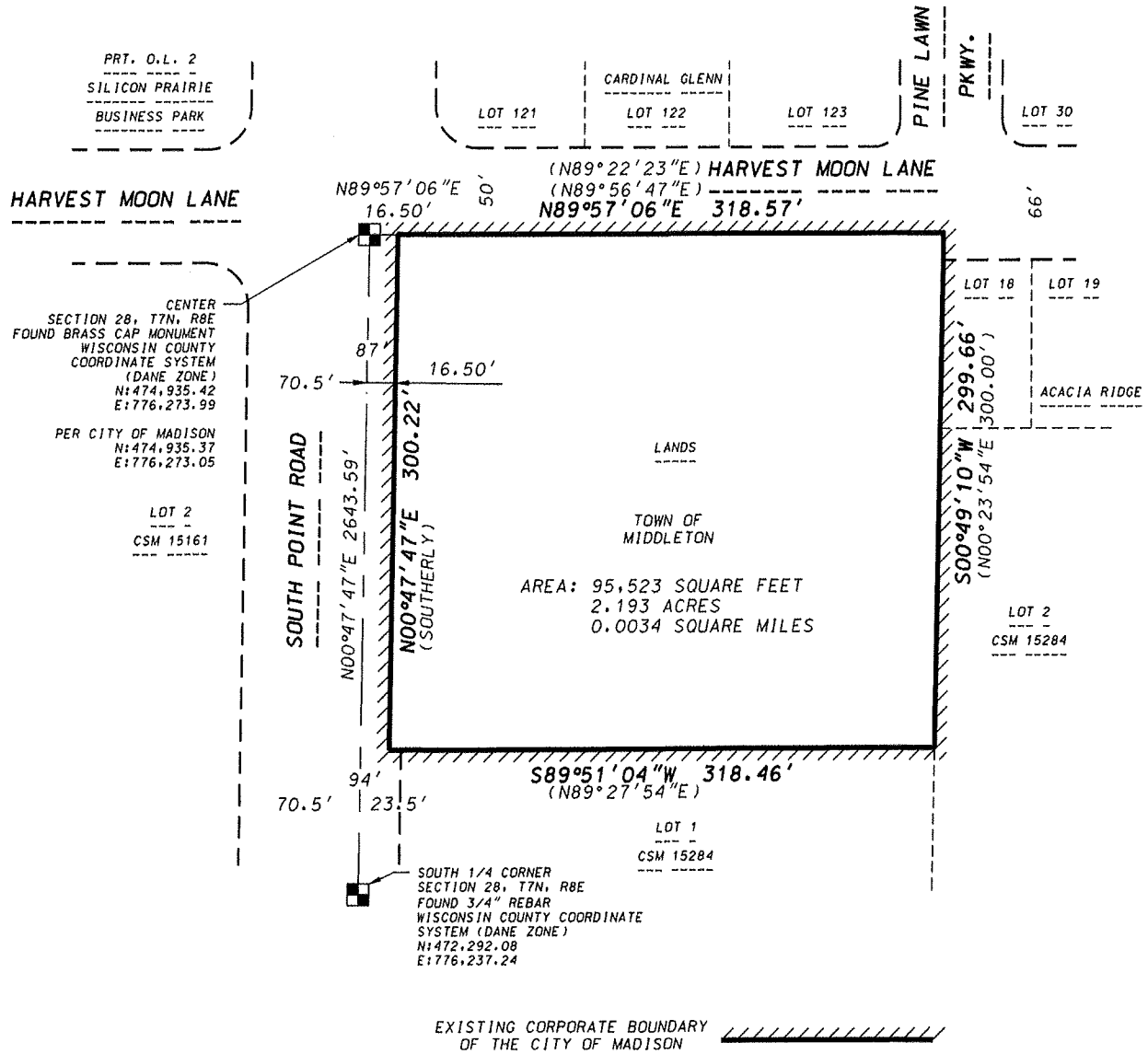


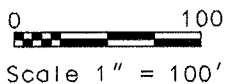
# EXHIBIT "II"

## LANDS TO BE ATTACHED TO THE CITY OF MADISON

### SCALE MAP



GRID NORTH  
WISCONSIN COUNTY  
COORDINATE SYSTEM  
DANE ZONE



**D'ONOFRIO KOTKE AND ASSOCIATES, INC.**

7530 Westward Way, Madison, WI 53717  
Phone: 608.833.7530 • Fax: 608.833.1089  
YOUR NATURAL RESOURCE FOR LAND DEVELOPMENT

DATE: 03-06-20  
F.N.: 20-07-101