





Fink Horejsh, LLC

N9494 State Road 69
New Glarus, WI 53574
ph 608-239-3754

McCormick/Commercial Development

701 McCormick Street &
3040 / 3046 Commercial Avenue
Madison, WI 53704

Project #: 19009.00

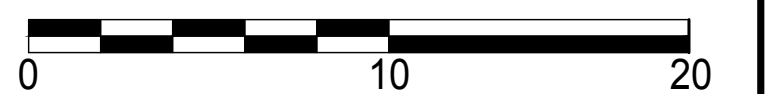
Land Use Application

Issued for:

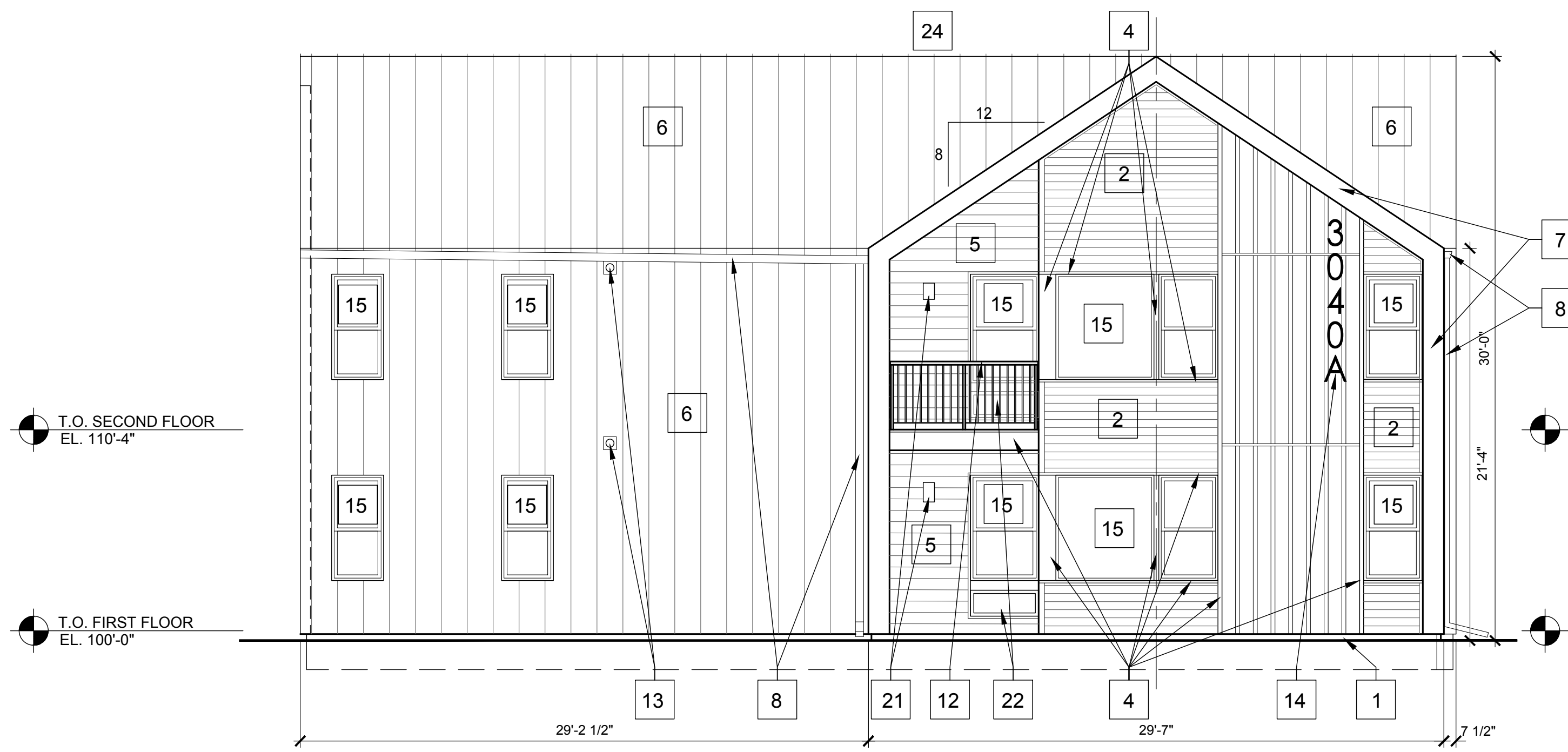
No.	Description	Date
1	Land Use Application	2/19/20

Drawn by: CaS4 Architecture
Checked by: CaS4 Architecture

EXTERIOR ELEVATIONS



A200a



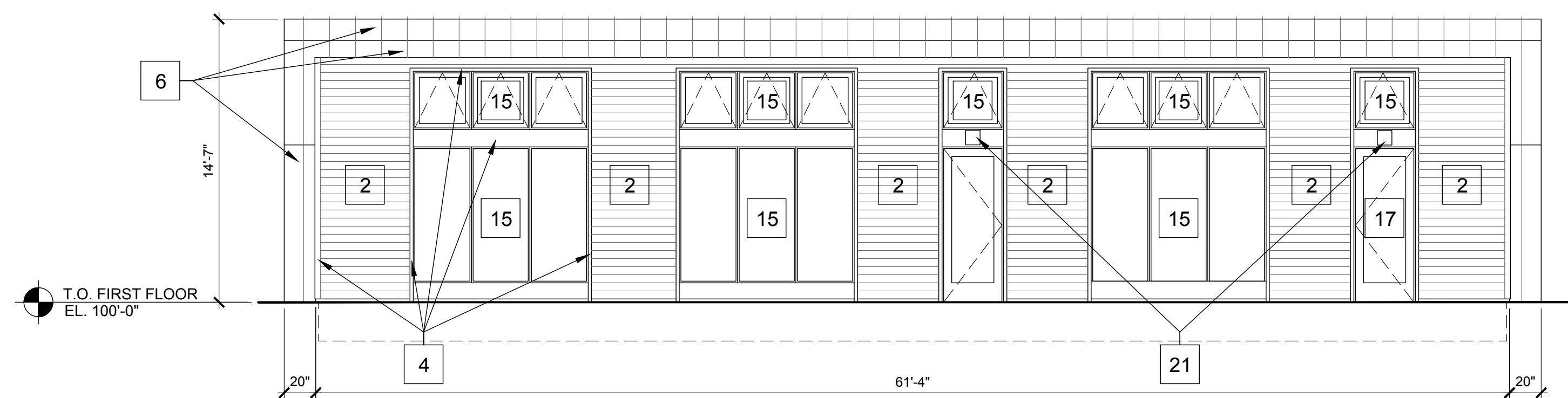
1 ELEVATION A & C (8-UNIT) - OPPOSITE
A200a SCALE: 3/16"=1'-0"



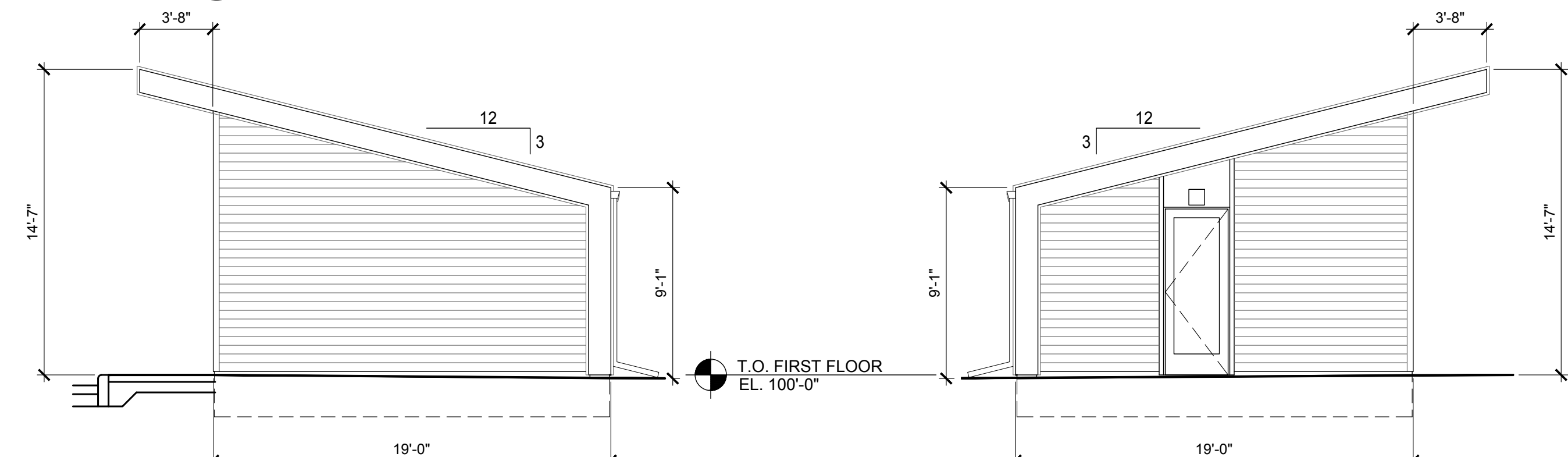
2 ELEVATION B (MAIN ENTRY) 8-UNIT - OPPOSITE
A200a SCALE: 3/16"=1'-0"



3 ELEVATION D (8-UNIT) - OPPOSITE
A200a SCALE: 3/16"=1'-0"

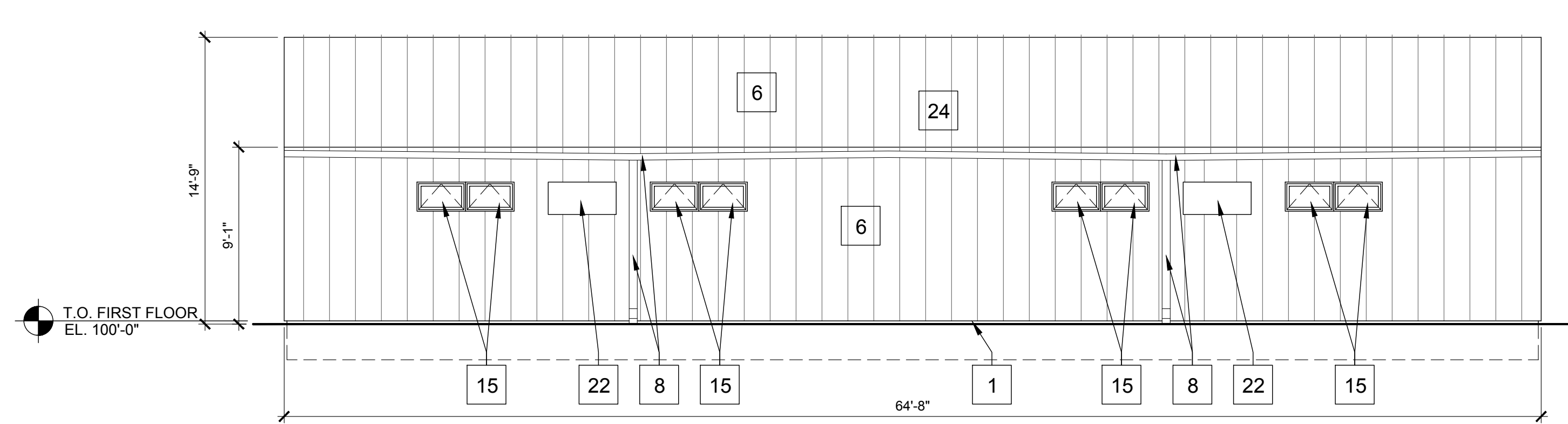


4 EAST ELEVATION - BIKE & FITNESS BLDG.
A200a SCALE: 3/16"=1'-0"



5 NORTH ELEVATION
A200a SCALE: 3/16"=1'-0"

7 SOUTH ELEVATION
A200a SCALE: 3/16"=1'-0"



6 WEST ELEVATION - BIKE & FITNESS BLDG.
A200a SCALE: 3/16"=1'-0"

MATERIAL KEY

- | | |
|---|---|
| 1 CONCRETE | 13 PRE-FINISHED ALUMINUM DRYER VENT - MATCH SIDING |
| 2 PRE-FINISHED CLAPBOARD SIDING - TAUPE | 14 RAISED ALUMINUM NUMBERS - WHITE |
| 3 PRE-FINISHED BOARD & BATTEN SIDING - TAUPE | 15 VINYL WINDOW (WHITE) WITH INSULATED GLASS |
| 4 PAINTED TRIM - WHITE | 16 VINYL SLIDING DOORS (WHITE) WITH INSULATED GLASS |
| 5 TRESPA FLUSH SIDING | 17 INSULATED DOOR (WHITE) WITH INSULATED GLASS |
| 6 PRE-FINISHED STANDING SEAM METAL - GRAY | 18 INSULATED DOOR (GRAY) |
| 7 PRE-FINISHED METAL FACIA - GRAY | 19 INSULATED ALUMINUM OVERHEAD DOOR - WHITE |
| 8 PRE-FINISHED ALUM. GUTTER & DOWNSPOUT - GRAY | 20 FIBERGLASS SHINGLE ROOFING - CHARCOAL |
| 9 PRE-FINISHED ALUM. GUTTER & DOWNSPOUT - WHITE | 21 LIGHT FIXTURE (LED) |
| 10 PRE-FINISHED METAL COPING - MATCH CLADDING | 22 THRU-WALL HVAC UNIT. |
| 11 METAL PIPE COLUMN - PAINTED WHITE | 23 THRU-WALL MECHANICAL LOUVER - PAINTED TAUPE |
| 12 PRE-FINISHED ALUMINUM RAILING - WHITE | 24 THRU-ROOF PLUMBING VENTS - TBD |

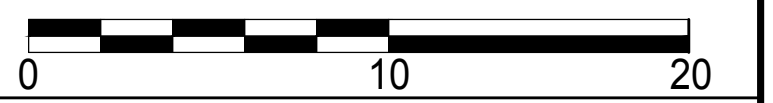
Land Use Application

Issued for:

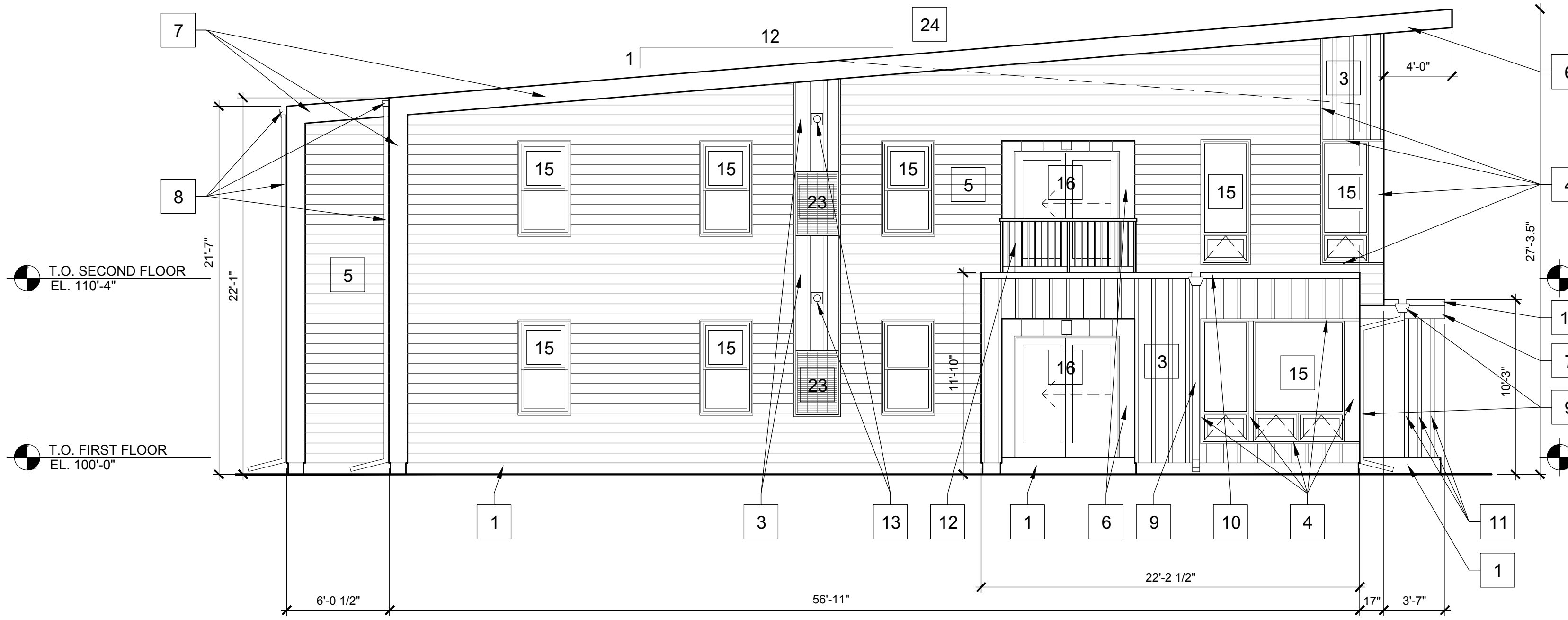
No.	Description	Date
1	Land Use Application	2/19/20

Drawn by: CaS4 Architecture
Checked by: CaS4 Architecture

EXTERIOR ELEVATIONS

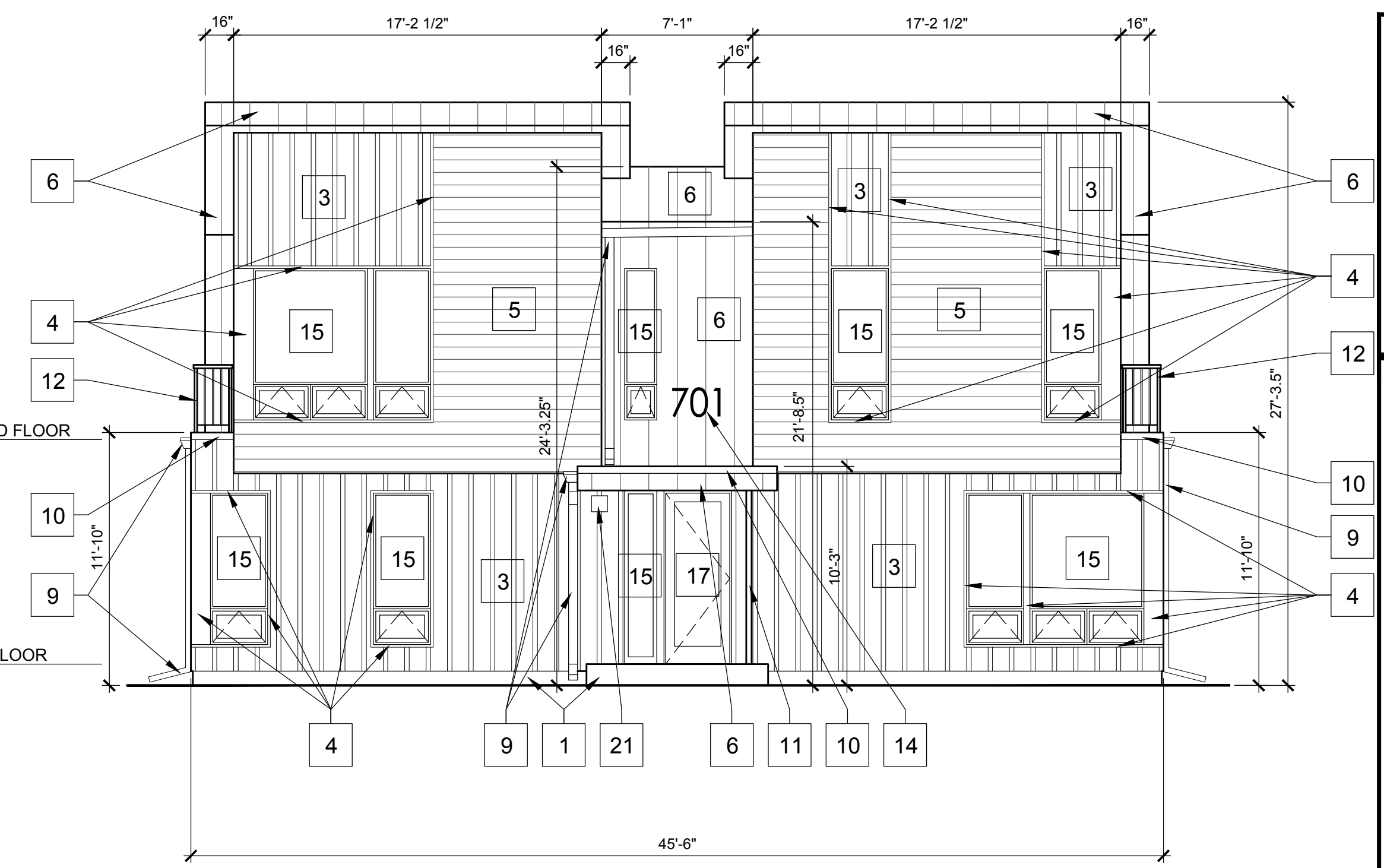


A200b



8 NORTH ELEVATION (4-UNIT)

SCALE: 3/16"=1'-0"



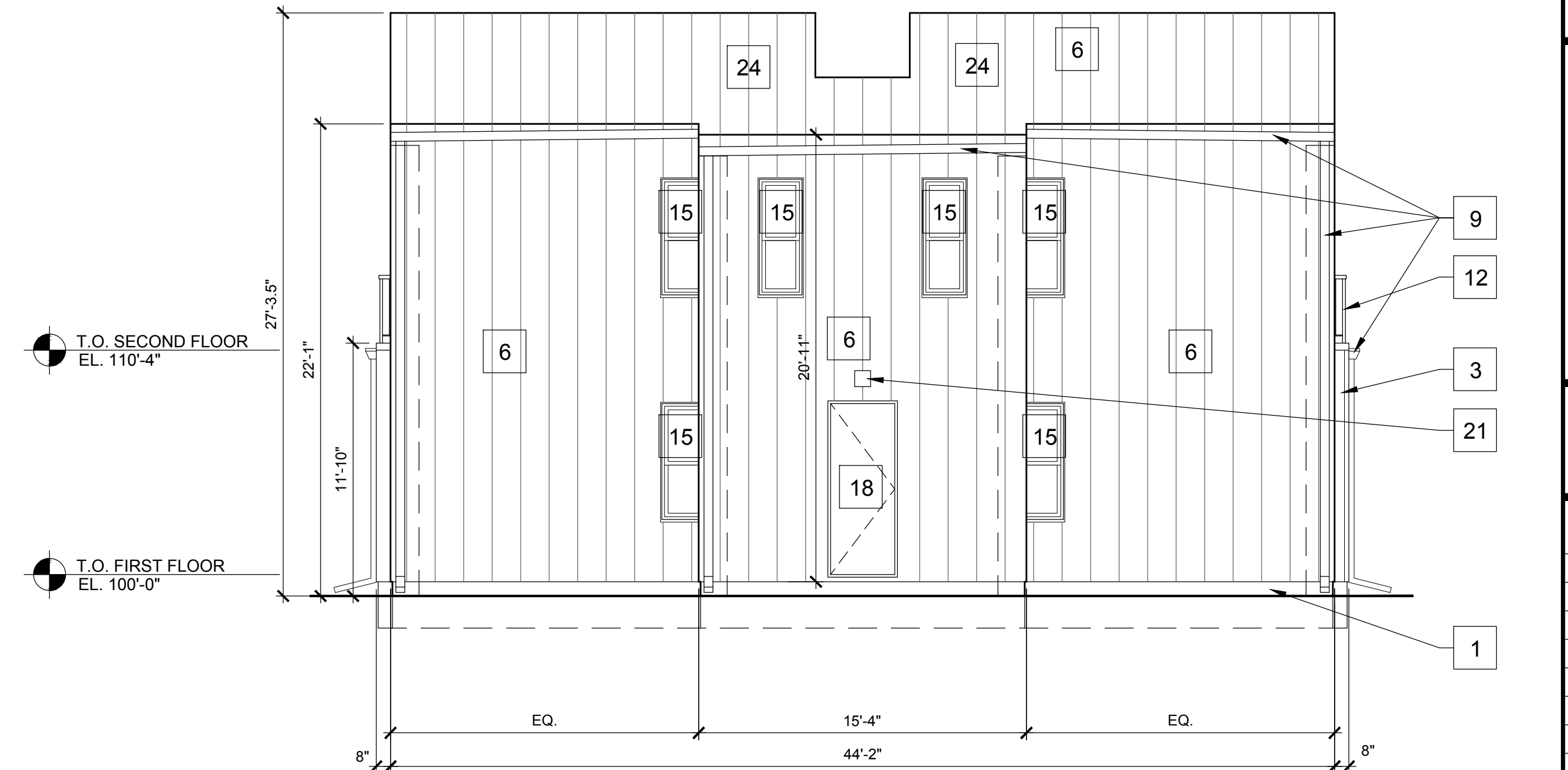
9 WEST ELEVATION (4-UNIT)

SCALE: 3/16"=1'-0"



10 SOUTH ELEVATION (4-UNIT)

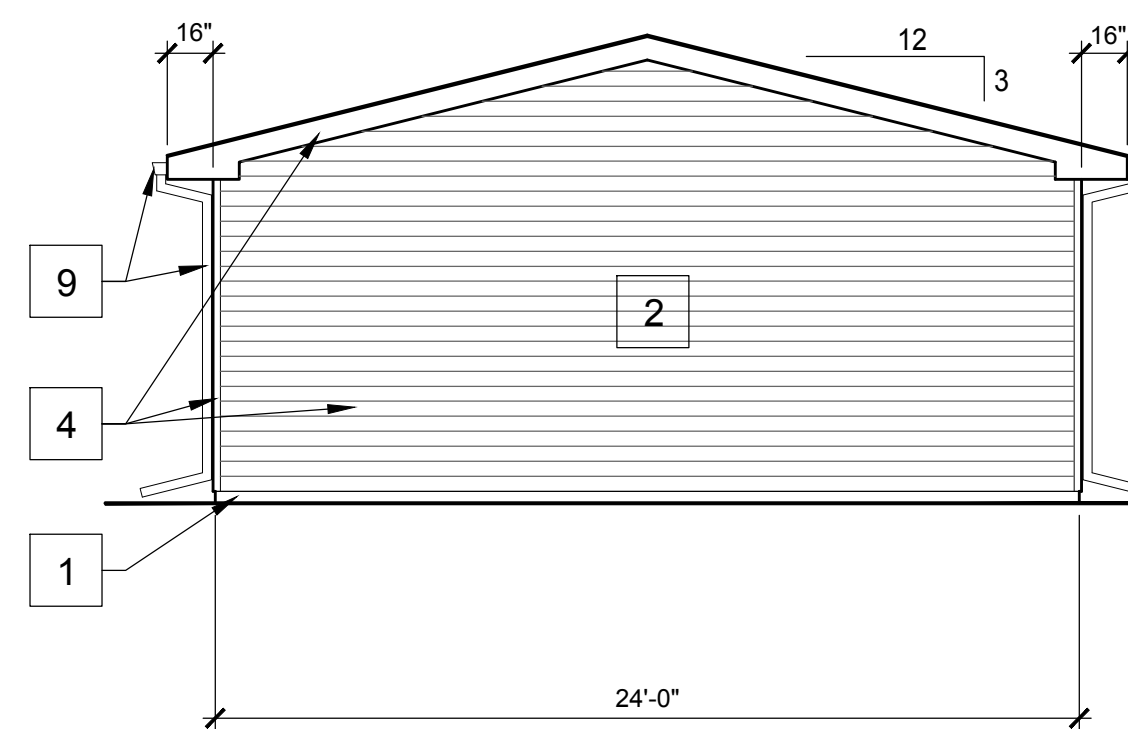
SCALE: 3/16"=1'-0"



11 EAST ELEVATION (4-UNIT)

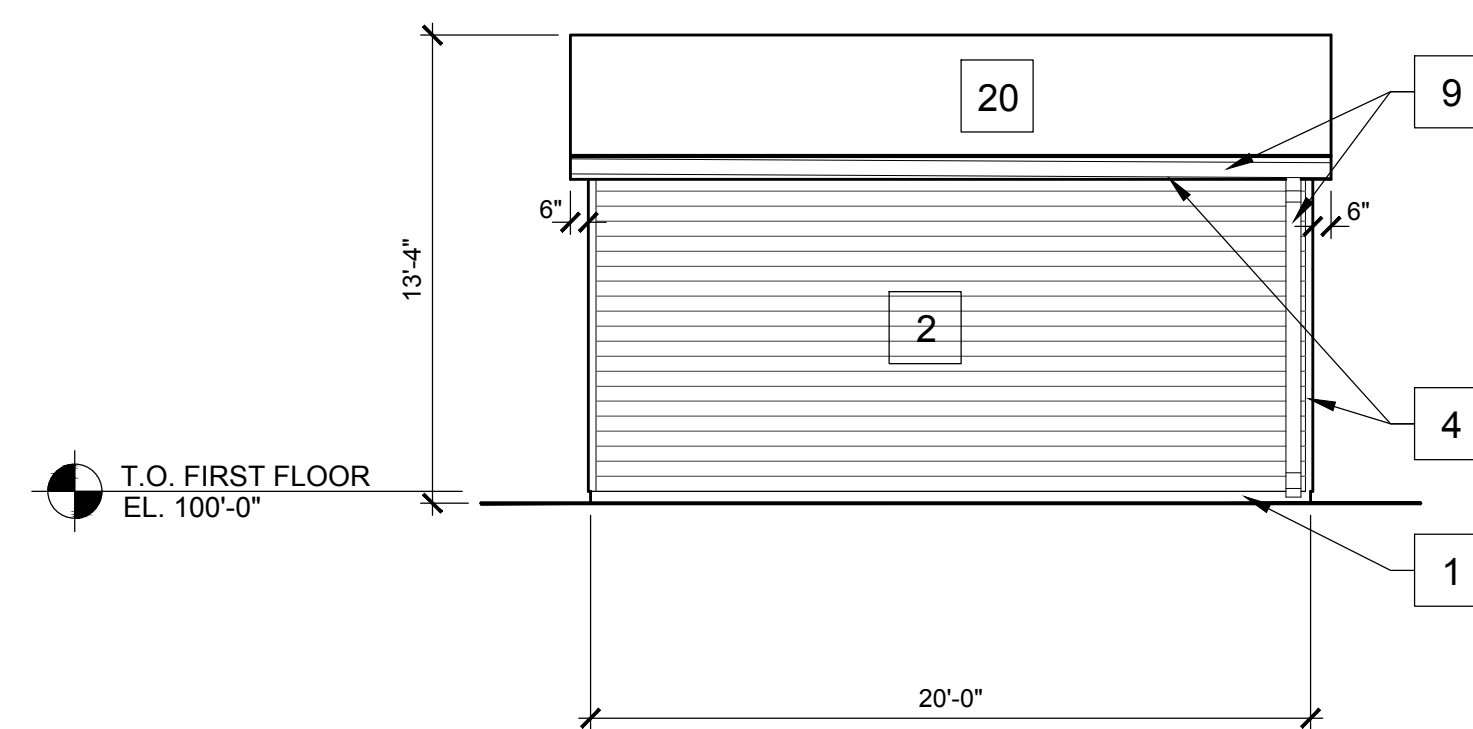
SCALE: 3/16"=1'-0"

DIMENSIONS & MATERIALS SIMILAR / OPPOSITE TO NORTH ELEVATION - SEE 8/A200b



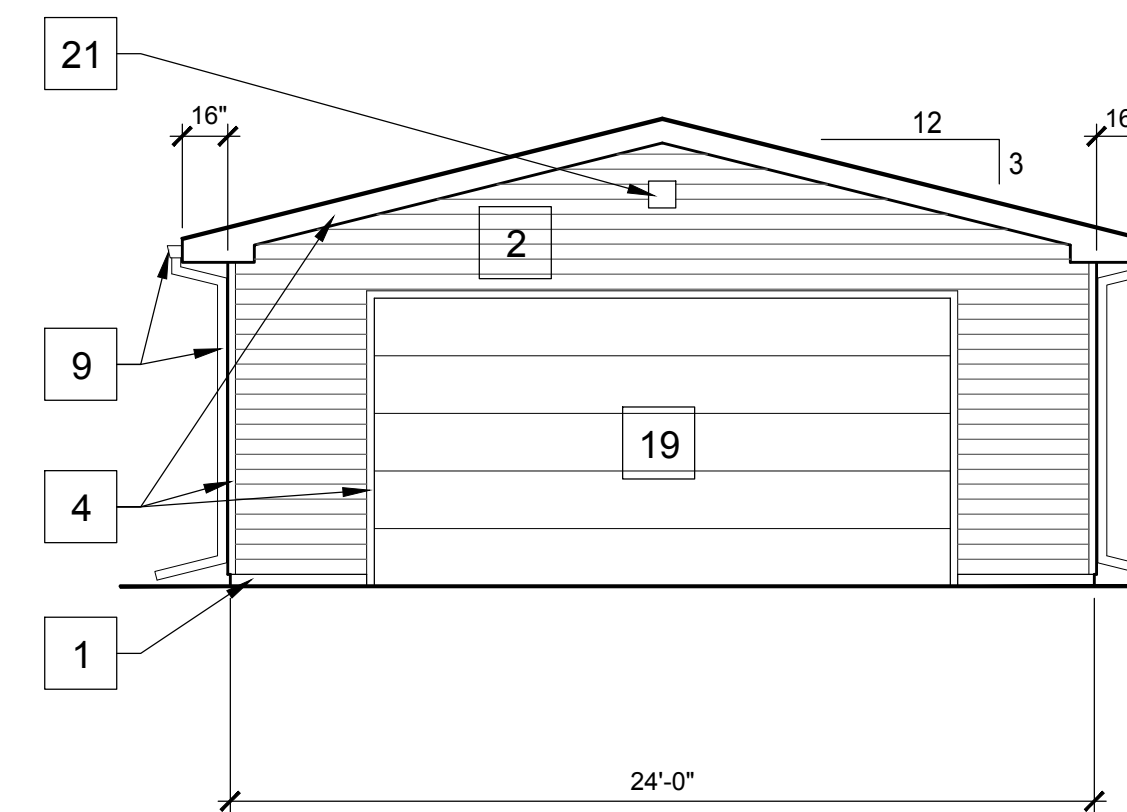
12 GARAGE - BACK ELEVATION

SCALE: 3/16"=1'-0"



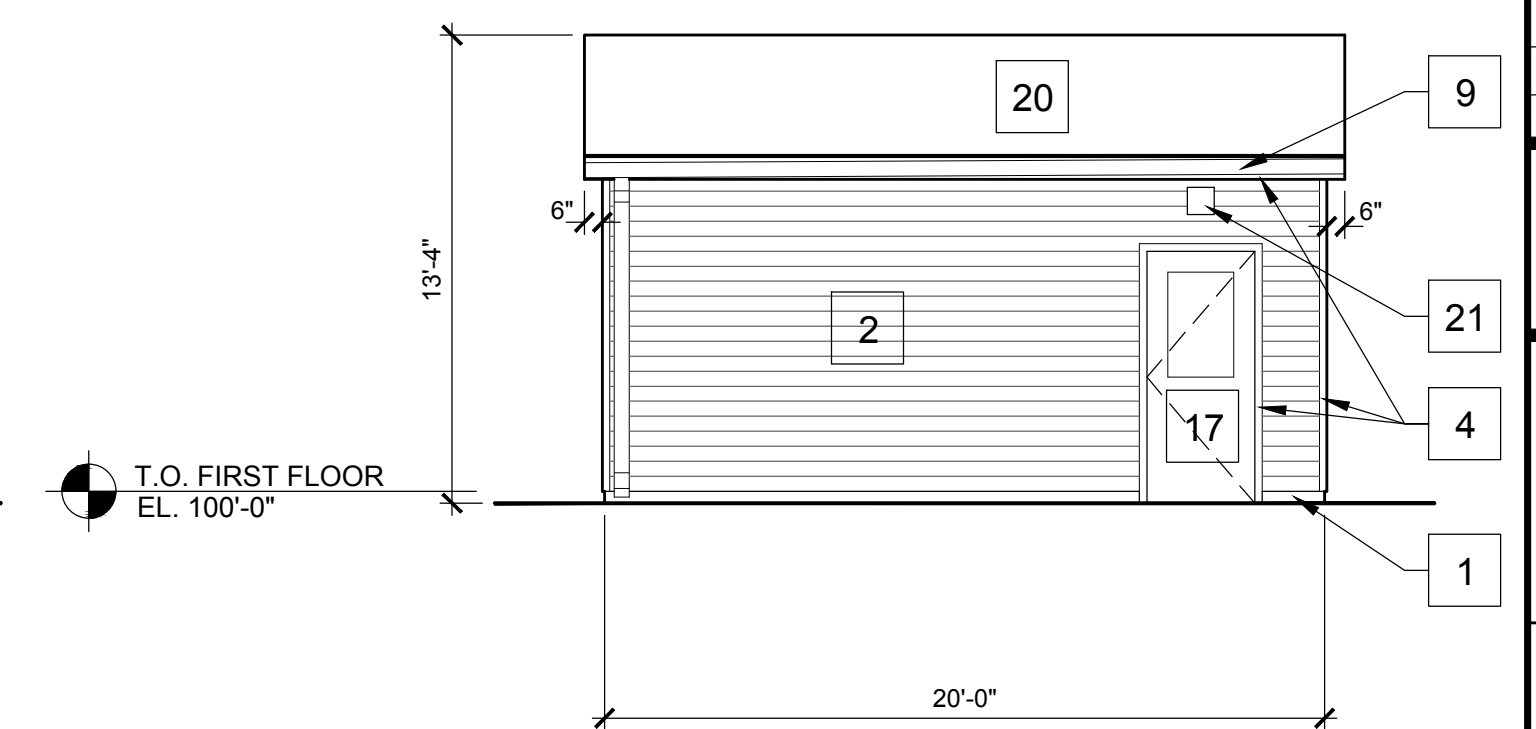
14 GARAGE - SIDE ELEVATION

SCALE: 13/16"=1'-0"



13 GARAGE - ENTRY ELEVATION

SCALE: 3/16"=1'-0"



15 GARAGE - SIDE ENTRY ELEV.

SCALE: 3/16"=1'-0"

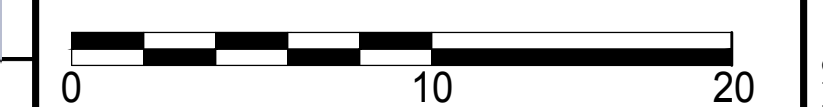
Land Use Application

Issued for:

No.	Description	Date
1	Land Use Application	2/19/20

Drawn by: CaS4 Architecture
Checked by: CaS4 Architecture

COLOR EXTERIOR ELEVATIONS



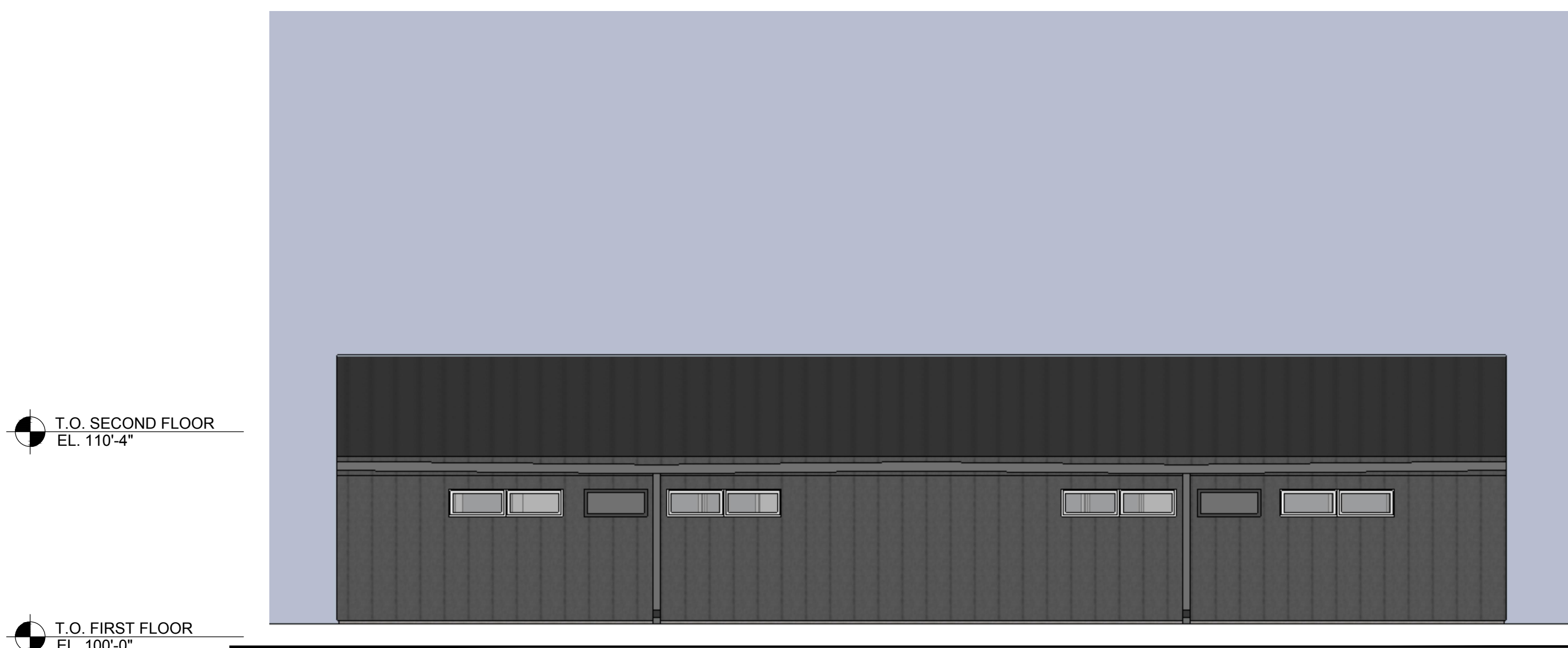
A201a



1 ELEVATION A & C (8-UNIT) - OPPOSITE
A201a SCALE: 3/16"=1'-0"



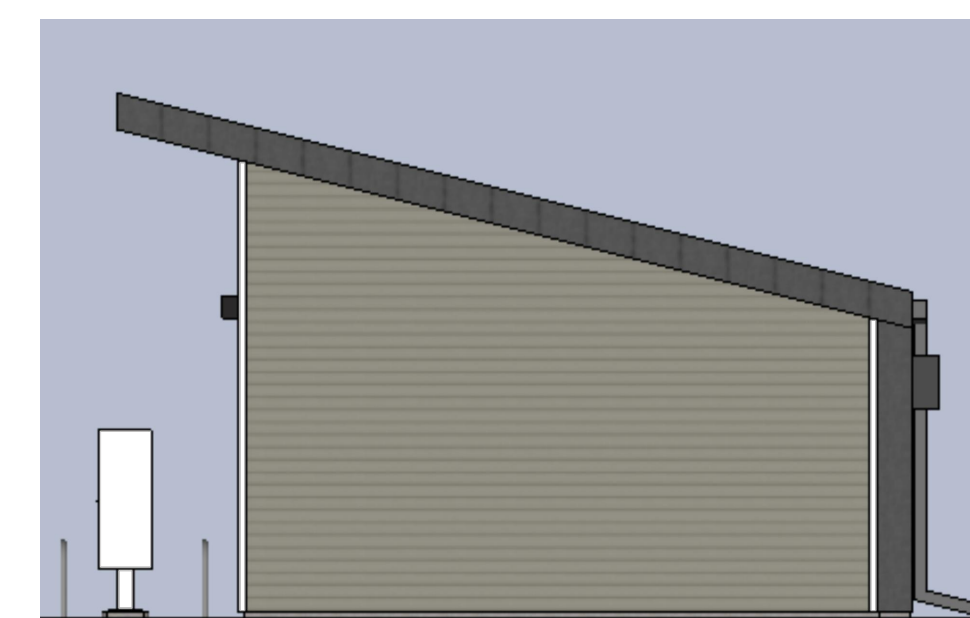
2 ELEVATION B (MAIN ENTRY) 8-UNIT - OPPOSITE
A201a SCALE: 3/16"=1'-0"



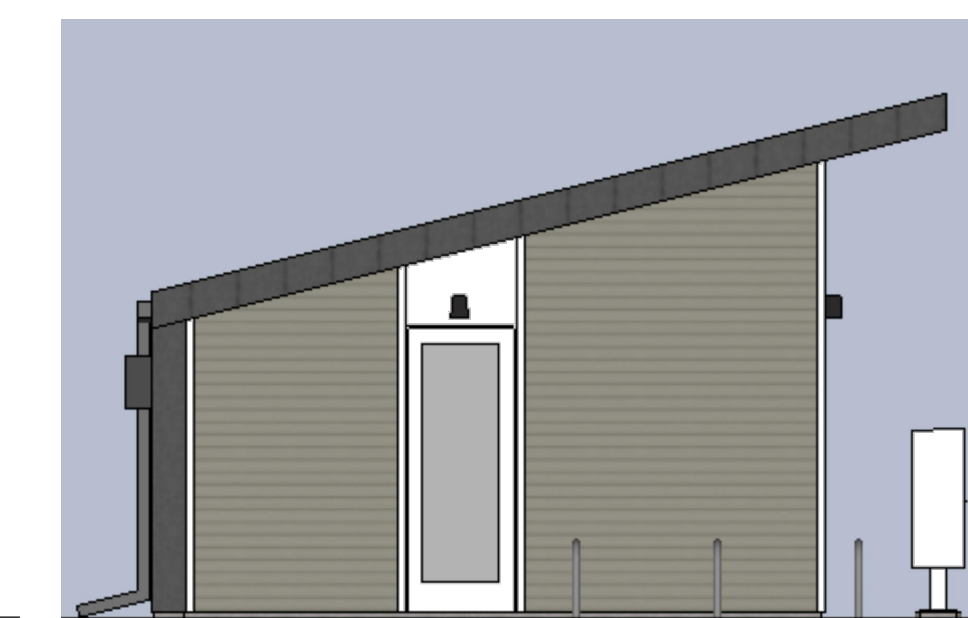
3 ELEVATION D (8-UNIT) - OPPOSITE
A201a SCALE: 3/16"=1'-0"



4 EAST ELEVATION - BIKE & FITNESS BLDG.
A201a SCALE: 3/16"=1'-0"



5 NORTH ELEVATION
A201a SCALE: 3/16"=1'-0"



7 SOUTH ELEVATION
A201a SCALE: 3/16"=1'-0"



6 WEST ELEVATION - BIKE & FITNESS BLDG.
A201a SCALE: 3/16"=1'-0"

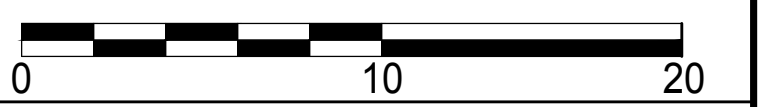
Land Use Application

Issued for:

No.	Description	Date
1	Land Use Application	2/19/20

Drawn by: CaS4 Architecture
 Checked by: CaS4 Architecture

COLOR EXTERIOR ELEVATIONS



A201b



8 NORTH ELEVATION (4-UNIT)
 SCALE: 3/16"=1'-0"



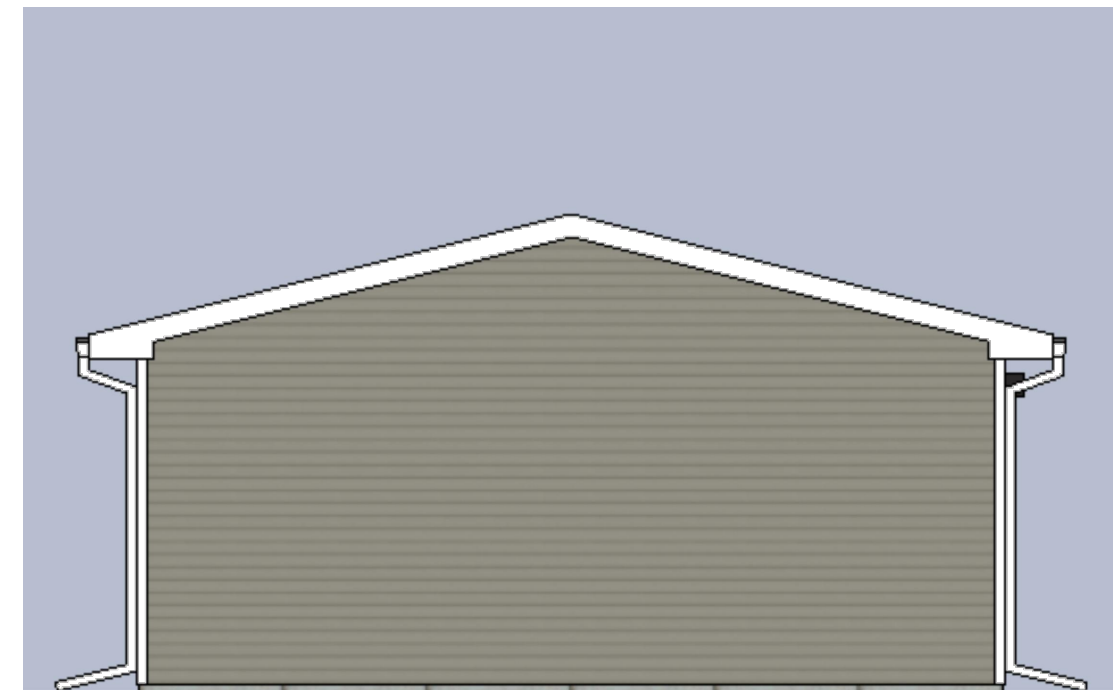
9 WEST ELEVATION (4-UNIT)
 SCALE: 3/16"=1'-0"



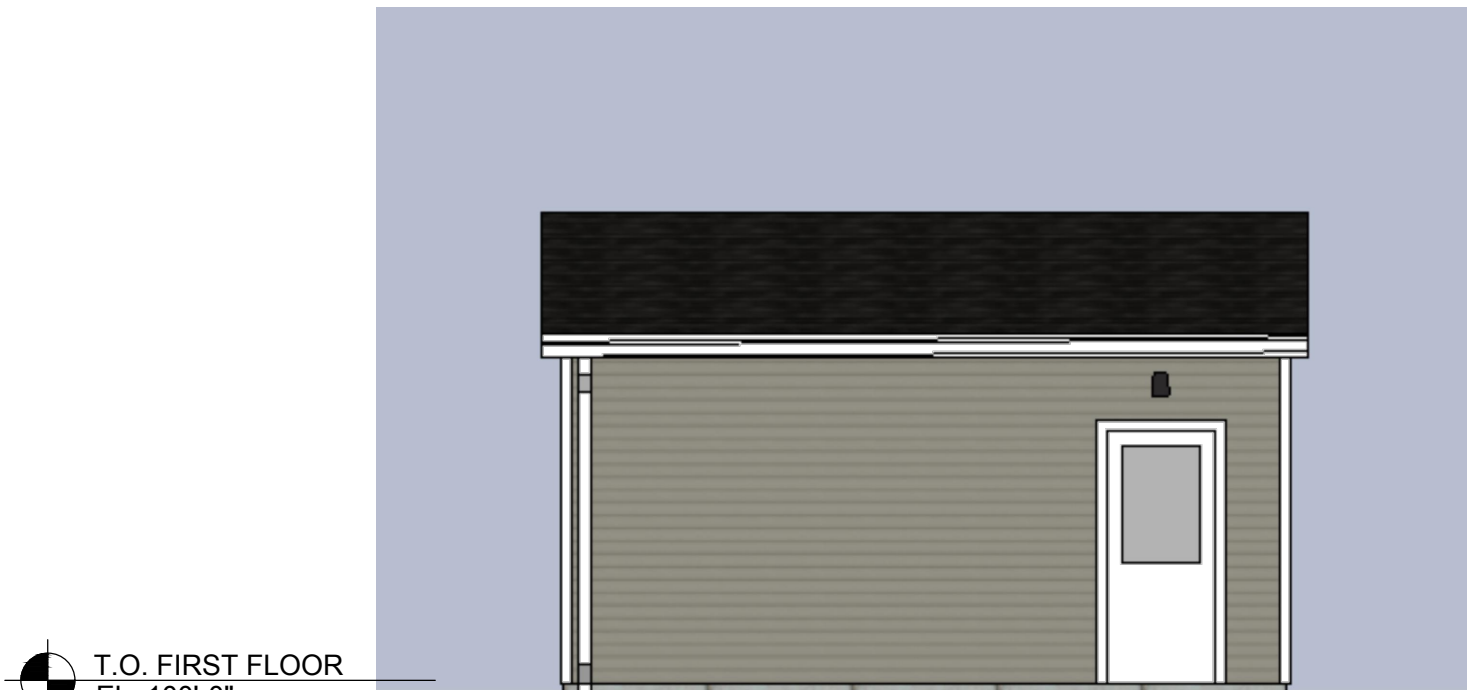
10 SOUTH ELEVATION (4-UNIT)
 SCALE: 3/16"=1'-0"



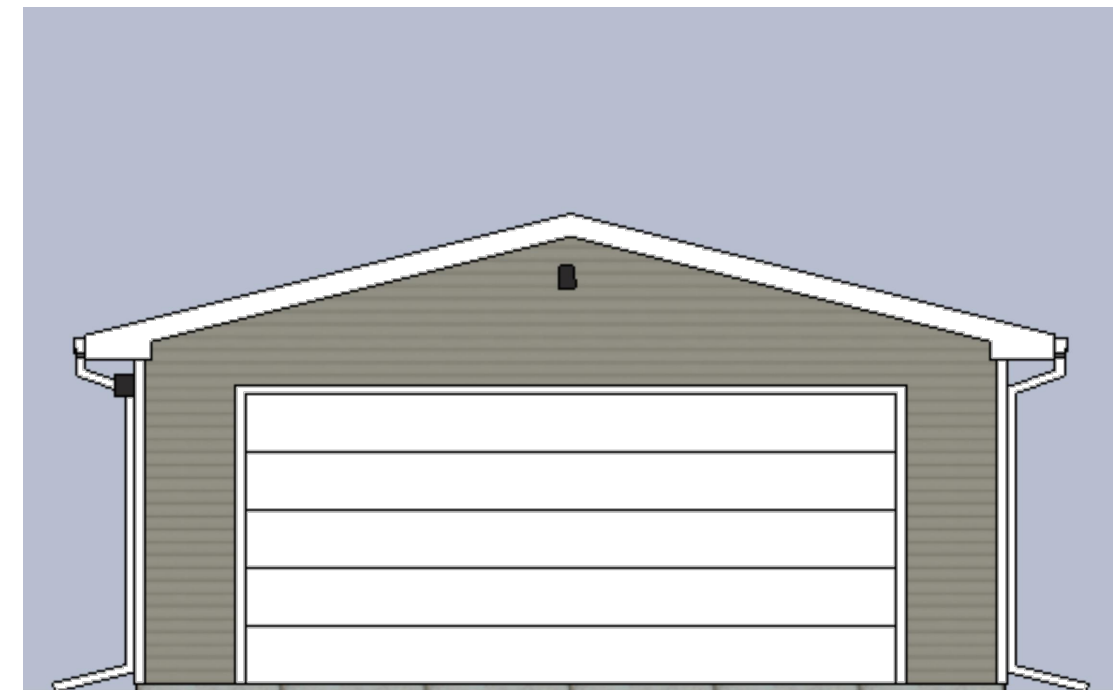
11 EAST ELEVATION (4-UNIT)
 SCALE: 3/16"=1'-0"



12 GARAGE - BACK ELEVATION
 SCALE: 3/16"=1'-0"



14 GARAGE - SIDE ELEVATION
 SCALE: 13/16"=1'-0"



13 GARAGE - ENTRY ELEVATION
 SCALE: 3/16"=1'-0"



15 GARAGE - SIDE ENTRY ELEV.
 SCALE: 3/16"=1'-0"

Fink Horejsh, LLC

N9494 State Road 69
New Glarus, WI 53574
ph 608-239-3754

McCormick/Commercial Development

701 McCormick Street &
3040 / 3046 Commercial Avenue
Madison, WI 53704

Project #: 19009.00

Land Use Application

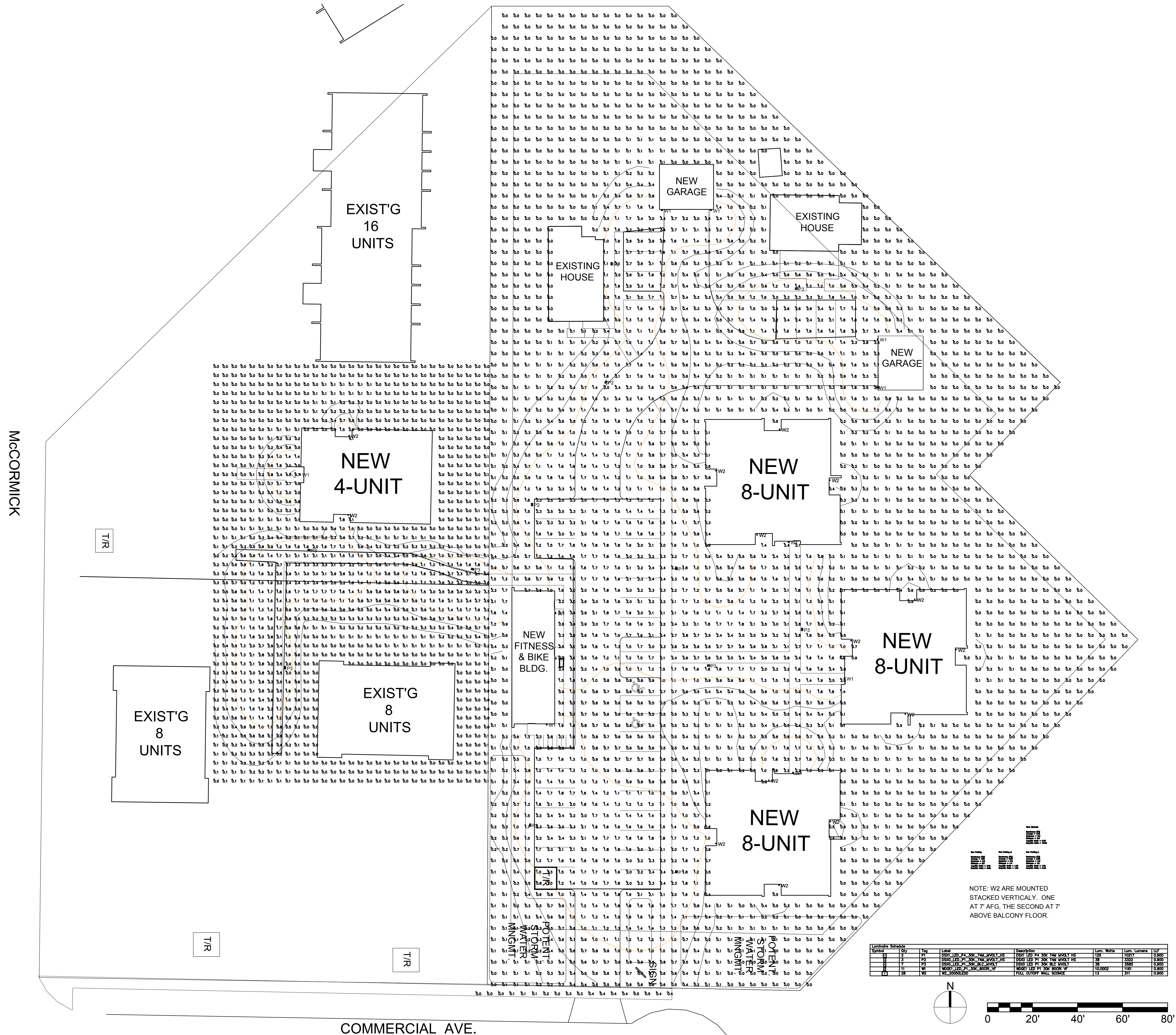
Issued for:

No.	Description	Date
1	Land Use Application	2/19/20

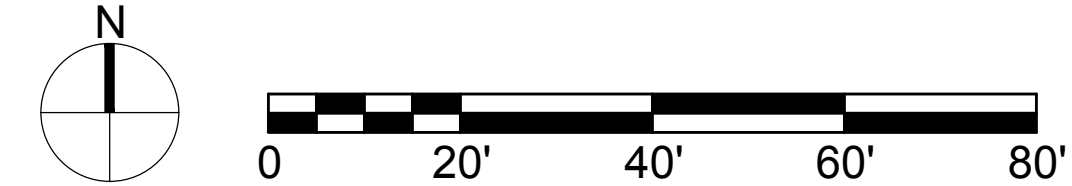
Drawn by: CaS4 Architecture
Checked by: CaS4 Architecture

SITE LIGHTING PHOTOMETRICS

G200



Luminaire Schedule	Qty	Label	Description	Lum. Watts	Lum. Lumens	UF
1	2	W1	EXIST'G 16 UNIT W1	125	10017	0.800
2	1	W2	EXIST'G 8 UNIT W2	28	2325	0.800
3	1	W3	EXIST'G 8 UNIT W3	28	2325	0.800
4	1	W4	EXIST'G 8 UNIT W4	28	2325	0.800
5	1	W5	EXIST'G 8 UNIT W5	28	2325	0.800
6	1	W6	EXIST'G 8 UNIT W6	28	2325	0.800
7	1	W7	EXIST'G 8 UNIT W7	28	2325	0.800
8	1	W8	EXIST'G 8 UNIT W8	28	2325	0.800
9	1	W9	EXIST'G 8 UNIT W9	28	2325	0.800
10	1	W10	EXIST'G 8 UNIT W10	28	2325	0.800
11	1	W11	EXIST'G 8 UNIT W11	28	2325	0.800
12	1	W12	EXIST'G 8 UNIT W12	28	2325	0.800
13	1	W13	EXIST'G 8 UNIT W13	28	2325	0.800
14	1	W14	EXIST'G 8 UNIT W14	28	2325	0.800
15	1	W15	EXIST'G 8 UNIT W15	28	2325	0.800
16	1	W16	EXIST'G 8 UNIT W16	28	2325	0.800
17	1	W17	EXIST'G 8 UNIT W17	28	2325	0.800
18	1	W18	EXIST'G 8 UNIT W18	28	2325	0.800
19	1	W19	EXIST'G 8 UNIT W19	28	2325	0.800
20	1	W20	EXIST'G 8 UNIT W20	28	2325	0.800
21	1	W21	EXIST'G 8 UNIT W21	28	2325	0.800
22	1	W22	EXIST'G 8 UNIT W22	28	2325	0.800
23	1	W23	EXIST'G 8 UNIT W23	28	2325	0.800
24	1	W24	EXIST'G 8 UNIT W24	28	2325	0.800
25	1	W25	EXIST'G 8 UNIT W25	28	2325	0.800
26	1	W26	EXIST'G 8 UNIT W26	28	2325	0.800
27	1	W27	EXIST'G 8 UNIT W27	28	2325	0.800
28	1	W28	EXIST'G 8 UNIT W28	28	2325	0.800
29	1	W29	EXIST'G 8 UNIT W29	28	2325	0.800
30	1	W30	EXIST'G 8 UNIT W30	28	2325	0.800
31	1	W31	EXIST'G 8 UNIT W31	28	2325	0.800
32	1	W32	EXIST'G 8 UNIT W32	28	2325	0.800
33	1	W33	EXIST'G 8 UNIT W33	28	2325	0.800
34	1	W34	EXIST'G 8 UNIT W34	28	2325	0.800
35	1	W35	EXIST'G 8 UNIT W35	28	2325	0.800
36	1	W36	EXIST'G 8 UNIT W36	28	2325	0.800
37	1	W37	EXIST'G 8 UNIT W37	28	2325	0.800
38	1	W38	EXIST'G 8 UNIT W38	28	2325	0.800
39	1	W39	EXIST'G 8 UNIT W39	28	2325	0.800
40	1	W40	EXIST'G 8 UNIT W40	28	2325	0.800
41	1	W41	EXIST'G 8 UNIT W41	28	2325	0.800
42	1	W42	EXIST'G 8 UNIT W42	28	2325	0.800
43	1	W43	EXIST'G 8 UNIT W43	28	2325	0.800
44	1	W44	EXIST'G 8 UNIT W44	28	2325	0.800
45	1	W45	EXIST'G 8 UNIT W45	28	2325	0.800
46	1	W46	EXIST'G 8 UNIT W46	28	2325	0.800
47	1	W47	EXIST'G 8 UNIT W47	28	2325	0.800
48	1	W48	EXIST'G 8 UNIT W48	28	2325	0.800
49	1	W49	EXIST'G 8 UNIT W49	28	2325	0.800
50	1	W50	EXIST'G 8 UNIT W50	28	2325	0.800
51	1	W51	EXIST'G 8 UNIT W51	28	2325	0.800
52	1	W52	EXIST'G 8 UNIT W52	28	2325	0.800
53	1	W53	EXIST'G 8 UNIT W53	28	2325	0.800
54	1	W54	EXIST'G 8 UNIT W54	28	2325	0.800
55	1	W55	EXIST'G 8 UNIT W55	28	2325	0.800
56	1	W56	EXIST'G 8 UNIT W56	28	2325	0.800
57	1	W57	EXIST'G 8 UNIT W57	28	2325	0.800
58	1	W58	EXIST'G 8 UNIT W58	28	2325	0.800
59	1	W59	EXIST'G 8 UNIT W59	28	2325	0.800
60	1	W60	EXIST'G 8 UNIT W60	28	2325	0.800
61	1	W61	EXIST'G 8 UNIT W61	28	2325	0.800
62	1	W62	EXIST'G 8 UNIT W62	28	2325	0.800
63	1	W63	EXIST'G 8 UNIT W63	28	2325	0.800
64	1	W64	EXIST'G 8 UNIT W64	28	2325	0.800
65	1	W65	EXIST'G 8 UNIT W65	28	2325	0.800
66	1	W66	EXIST'G 8 UNIT W66	28	2325	0.800
67	1	W67	EXIST'G 8 UNIT W67	28	2325	0.800
68	1	W68	EXIST'G 8 UNIT W68	28	2325	0.800
69	1	W69	EXIST'G 8 UNIT W69	28	2325	0.800
70	1	W70	EXIST'G 8 UNIT W70	28	2325	0.800
71	1	W71	EXIST'G 8 UNIT W71	28	2325	0.800
72	1	W72	EXIST'G 8 UNIT W72	28	2325	0.800
73	1	W73	EXIST'G 8 UNIT W73	28	2325	0.800
74	1	W74	EXIST'G 8 UNIT W74	28	2325	0.800
75	1	W75	EXIST'G 8 UNIT W75	28	2325	0.800
76	1	W76	EXIST'G 8 UNIT W76	28	2325	0.800
77	1	W77	EXIST'G 8 UNIT W77	28	2325	0.800
78	1	W78	EXIST'G 8 UNIT W78	28	2325	0.800
79	1	W79	EXIST'G 8 UNIT W79	28	2325	0.800
80	1	W80	EXIST'G 8 UNIT W80	28	2325	0.800
81	1	W81	EXIST'G 8 UNIT W81	28	2325	0.800
82	1	W82	EXIST'G 8 UNIT W82	28	2325	0.800
83	1	W83	EXIST'G 8 UNIT W83	28	2325	0.800
84	1	W84	EXIST'G 8 UNIT W84	28	2325	0.800
85	1	W85	EXIST'G 8 UNIT W85	28	2325	0.800
86	1	W86	EXIST'G 8 UNIT W86	28	2325	0.800
87	1	W87	EXIST'G 8 UNIT W87	28	2325	0.800
88	1	W88	EXIST'G 8 UNIT W88	28	2325	0.800
89	1	W89	EXIST'G 8 UNIT W89	28	2325	0.800
90	1	W90	EXIST'G 8 UNIT W90	28	2325	0.800
91	1	W91	EXIST'G 8 UNIT W91	28	2325	0.800
92	1	W92	EXIST'G 8 UNIT W92	28	2325	0.800
93	1	W93	EXIST'G 8 UNIT W93	28	2325	0.800
94	1	W94	EXIST'G 8 UNIT W94	28	2325	0.800
95	1	W95	EXIST'G 8 UNIT W95	28	2325	0.800
96	1	W96	EXIST'G 8 UNIT W96	28	2325	0.800
97	1	W97	EXIST'G 8 UNIT W97	28	2325	0.800
98	1	W98	EXIST'G 8 UNIT W98	28	2325	0.800
99	1	W99	EXIST'G 8 UNIT W99	28	2325	0.800
100	1	W100	EXIST'G 8 UNIT W100	28	2325	0.800



3040 / 3046 COMMERCIAL AVENUE EXTERIOR LUMINAIRE SCHEDULE

QTY	TYPE	DESCRIPTION	CCT	NOMINAL DELIVERED LUMENS	NOMINAL WATTAGE	MFTR	MODEL #
2	P1	POLE MOUNTED AREA LIGHT. FULL CUTOFF TYPE 4 MEDIUM DISTRIBUTION WITH HOUSE SIDE SHIELD. PROVIDE WITH 25' ROUND STRAIGHT STEEL POLE. VERIFY FINISH SELECTION.	3000	10,217	125	LITHONIA	DSX1-LED-P4-30K-T4M-MVOLT-HS
3	P2	POLE MOUNTED PEDESTRIAN LIGHT. FULL CUTOFF TYPE 4 MEDIUM DISTRIBUTION WITH HOUSE SIDE SHIELD. PROVIDE WITH 14' ROUND STRAIGHT STEEL POLE. VERIFY FINISH SELECTION.	3000	3,322	38	LITHONIA	DSX0-LED-P1-30K-T4M-MVOLT-HS
7	P3	POLE MOUNTED PEDESTRIAN LIGHT. FULL CUTOFF TYPE 3 WITH BACKLIGHT CONTROL. PROVIDE WITH 14' ROUND STRAIGHT STEEL POLE. VERIFY FINISH SELECTION.	3000	3,585	38	LITHONIA	DSX0-LED-P1-30K-BLC-MVOLT
11	W1	FULL CUTOFF FORWARD THROW AREA LIGHT. MOUNT AT APPROXIMATELY 9'-0" AFG. VERIFY FINISH SELECTION.	3000	1,161	10	LITHONIA	WDGE1-LED-P1-30K-80CRI-VF
28	W2	UNIT PATIO SCONCE. VERIFY FINISH SELECTION. MOUNT AT APPROXIMATELY 7' ABOVE FINISHED FLOOR.	3000	1,293	13	ACCESS	EDGE 20050LEDDMG-XXX



D-Series Size 1 LED Area Luminaire

d#series

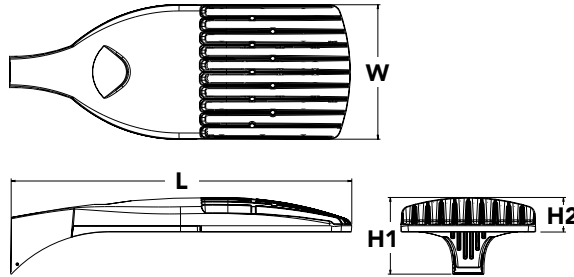


Catalog Number	
Notes	
Type	P1

Hit the Tab key or mouse over the page to see all interactive elements.

Specifications

EPA:	1.01 ft ² (0.09 m ²)
Length:	33" (83.8 cm)
Width:	13" (33.0 cm)
Height H1:	7-1/2" (19.0 cm)
Height H2:	3-1/2"
Weight (max):	27 lbs (12.2 kg)



Introduction

The modern styling of the D-Series is striking yet unobtrusive - making a bold, progressive statement even as it blends seamlessly with its environment. The D-Series distills the benefits of the latest in LED technology into a high performance, high efficacy, long-life luminaire.

The outstanding photometric performance results in sites with excellent uniformity, greater pole spacing and lower power density. It is ideal for replacing up to 750W metal halide in pedestrian and area lighting applications with typical energy savings of 65% and expected service life of over 100,000 hours.

A+ Capable options indicated by this color background.

Ordering Information

EXAMPLE: DSX1 LED P7 40K T3M MVOLT SPA NLTAIR2 PIRHN DDBXD

DSX1 LED		Color temperature		Distribution		Voltage	Mounting	
Series	LEDs	Color temperature		Distribution		Voltage	Mounting	
DSX1 LED	Forward optics P1 P4 P7 P2 P5 P8 P3 P6 P9 Rotated optics P10 ¹ P12 ¹ P11 ¹ P13 ¹	30K 3000 K	40K 4000 K	50K 5000 K	T1S Type I short (Automotive) T2S Type II short T2M Type II medium T3S Type III short T3M Type III medium T4M Type IV medium TFTM Forward throw medium	T5VS Type V very short ² T5S Type V short ² T5M Type V medium ² T5W Type V wide ² BLC Backlight control ³ LCCO Left corner cutoff ³ RCCO Right corner cutoff ³	MVOLT ⁴ 120 ⁵ 208 ⁵ 240 ⁵ 277 ⁵ 347 ⁵ 480 ⁵	Shipped included SPA Square pole mounting RPA Round pole mounting WBA Wall bracket ² SPUMBA Square pole universal mounting adaptor ⁶ RPUMBA Round pole universal mounting adaptor ⁶ Shipped separately KMA8 DDBXD U Mast arm mounting bracket adaptor (specify finish) ⁷
Control options						Other options	Finish (required)	
Shipped installed NLTAIR2 nLight AIR generation 2 enabled ⁸ PIRHN Network, high/low motion/ambient sensor ⁹ PER NEMA twist-lock receptacle only (controls ordered separate) ¹⁰ PER5 Five-pin receptacle only (controls ordered separate) ^{10,11} PER7 Seven-pin receptacle only (controls ordered separate) ^{10,11} DMG 0-10v dimming wires pulled outside fixture (for use with an external control, ordered separately) ¹³ DS Dual switching ^{13,14,15}						PIR High/low, motion/ambient sensor, 8-15' mounting height, ambient sensor enabled at 5fc ^{16,17} PIRH High/low, motion/ambient sensor, 15-30' mounting height, ambient sensor enabled at 5fc ^{16,17} PIR1FC3V High/low, motion/ambient sensor, 8-15' mounting height, ambient sensor enabled at 1fc ^{16,17} PIRH1FC3V Bi-level, motion/ambient sensor, 15-30' mounting height, ambient sensor enabled at 1fc ^{16,17} FAO Field adjustable output ¹⁵	Shipped installed HS House-side shield ¹⁸ SF Single fuse (120, 277, 347V) ⁵ DF Double fuse (208, 240, 480V) ⁵ L90 Left rotated optics ¹ R90 Right rotated optics ¹ Shipped separately BS Bird spikes ¹⁹ EGS External glare shield	DDBXD Dark bronze DBLXD Black DNAXD Natural aluminum DWHXD White DDBTXD Textured dark bronze DBLBXD Textured black DNATXD Textured natural aluminum DWHGXD Textured white



Ordering Information

Accessories

Ordered and shipped separately.

DLL127F 1.5 JU	Photocell - SSL twist-lock (120-277V) ²⁰
DLL347F 1.5 CUL JU	Photocell - SSL twist-lock (347V) ²⁰
DLL480F 1.5 CUL JU	Photocell - SSL twist-lock (480V) ²⁰
DSHORT SBK U	Shorting cap ²⁰
DSX1HS 30C U	House-side shield for P1, P2, P3, P4 and P5 ¹⁸
DSX1HS 40C U	House-side shield for P6 and P7 ¹⁸
DSX1HS 60C U	House-side shield for P8, P9, P10, P11 and P12 ¹⁸
PUMBA DDBXD U*	Square and round pole universal mounting bracket (specify finish) ²¹
KMA8 DDBXD U	Mast arm mounting bracket adaptor (specify finish) ⁷
DSX1EGS (FINISH) U	External glare shield

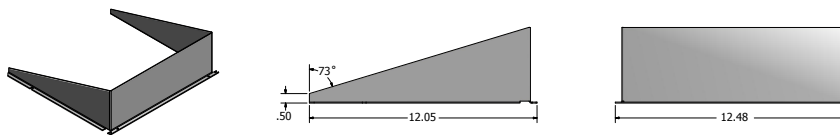
For more control options, visit [DTL](#) and [ROAM](#) online.

NOTES

- P10, P11, P12 or P13 and rotated optics (L90, R90) only available together.
- Any Type 5 distribution with photocell, is not available with WBA.
- Not available with HS.
- MVOLT driver operates on any line voltage from 120-277V (50/60 Hz).
- Single fuse (SF) requires 120V, 277V or 347V. Double fuse (DF) requires 208V, 240V or 480V.
- Universal mounting brackets intended for retrofit on existing, pre-drilled poles only. 1.5 G vibration load rating per ANCI C136.31.
- Must order fixture with SPA option. Must be ordered as a separate accessory; see Accessories information. For use with 2-3/8" mast arm (not included).
- Must be ordered with PIRHN. Sensor cover available only in dark bronze, black, white and natural aluminum colors.
- Must be ordered with NLTAIR2. For more information on Light Air 2 visit [this link](#).
- Photocell ordered and shipped as a separate line item from Acuity Brands Controls. See accessories. Not available with DS option. Shorting cap included.
- If ROAM[®] node required, it must be ordered and shipped as a separate line item from Acuity Brands Controls. Node with integral dimming.
- DMG not available with PIRHN, PER5, PER7, PIR, PIRH, PIR1FC3V or PIRH1FC3V.
- Provides 50/50 fixture operation via (2) independent drivers. Not available with PER, PER5, PER7, PIR or PIRH. Not available P1, P2, P3, P4 or P5.
- Requires (2) separately switched circuits with isolated neutral. See Outdoor Control Technical Guide for details.
- Reference Motion Sensor table on page 4.
- Reference controls options table on page 4 to see functionality.
- Not available with other dimming controls options
- Not available with BLC, LCCO and RCCO distribution. Also available as a separate accessory; see Accessories information.
- Must be ordered with fixture for factory pre-drilling.
- Requires luminaire to be specified with PER, PER5 or PER7 option. See PER Table on page 3.
- For retrofit use only.

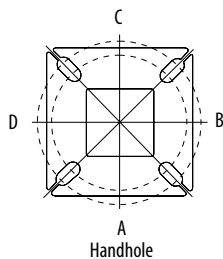
Options

EGS - External Glare Shield



Drilling

HANDHOLE ORIENTATION

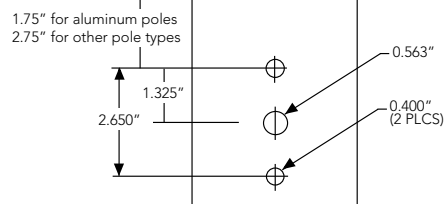


Tenon Mounting Slipfitter**

Tenon O.D.	Mounting	Single Unit	2 @ 180	2 @ 90	3 @ 120	3 @ 90	4 @ 90
2-3/8"	SPA/RPA	AS3-5 190	AS3-5 280	AS3-5 290	AS3-5 320	AS3-5 390	AS3-5 490
	SPUMBA	AS3-5 190	AS3-5 280	AS4-5 290	AS3-5 320	AS4-5 390	AS4-5 490
	RUPUMBA	AS3-5 190	AS3-5 280		AS3-5 320		
2-7/8"	SPA/RPA	AST25-190	AST25-280	AST25-290	AST25-320	AST25-390	AST25-490
	SPUMBA	AST25-190	AST25-280		AST25-320		
	RUPUMBA	AST25-190	AST25-280		AST25-320		
4"	SPA/RPA	AST35-190	AST35-280	AST35-290	AST35-320	AST35-390	AST35-490
	SPUMBA	AST35-190	AST35-280	AST35-290	AST35-320	AST35-390	AST35-490
	RUPUMBA	AST35-190	AST35-280		AST35-320		

Template #8

Top of Pole



Mounting Option	Drilling Template	Single	2 @ 180	2 @ 90	3 @ 90	3 @ 120	4 @ 90
Head Location		Side B	Side B & D	Side B & C	Side B, C & D	Round Pole Only	Side A, B, C & D
Drill Nomenclature	#8	DM19AS	DM28AS	DM29AS	DM39AS	DM32AS	DM49AS

	Drilling Template	Minimum Acceptable Outside Pole Dimension					
SPA	#8	2-7/8"	2-7/8"	3.5"	3.5"	3"	3.5"
RPA	#8	2-7/8"	2-7/8"	3.5"	3.5"	3"	3.5"
SPUMBA	#5	2-7/8"	3"	4"	4"	3.5"	4"
RUPUMBA	#5	2-7/8"	3.5"	5"	5"	3.5"	5"

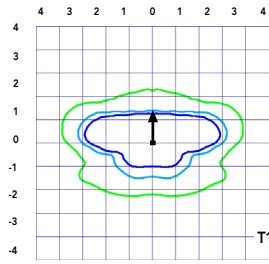
Photometric Diagrams

To see complete photometric reports or download .ies files for this product, visit Lithonia Lighting's [D-Series Area Size 1 homepage](#).

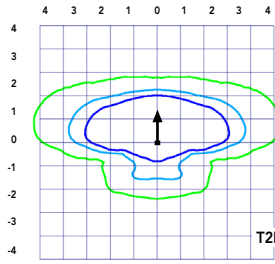
Isofootcandle plots for the DSX1 LED 60C 1000 40K. Distances are in units of mounting height (25').

LEGEND

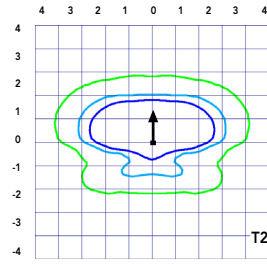
- 0.1 fc
- 0.5 fc
- 1.0 fc



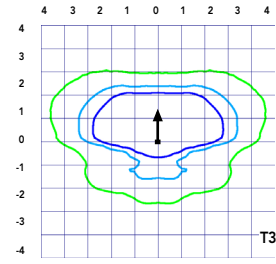
Test No. LT.L23211 tested in accordance with IESNA LM-79-08.



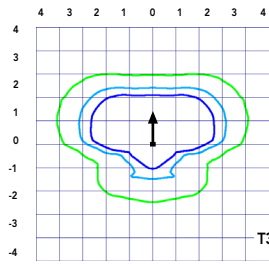
Test No. LT.L23164B tested in accordance with IESNA LM-79-08.



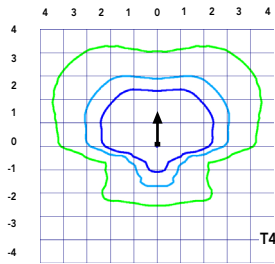
Test No. LT.L23222 tested in accordance with IESNA LM-79-08.



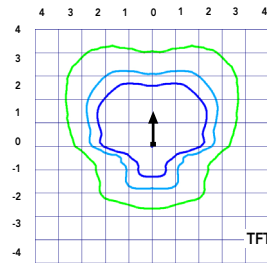
Test No. LT.L23271 tested in accordance with IESNA LM-79-08.



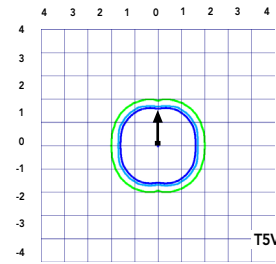
Test No. LT.L23211 tested in accordance with IESNA LM-79-08.



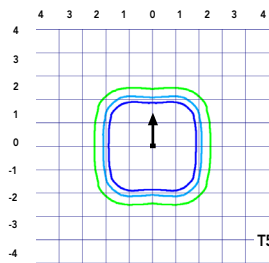
Test No. LT.L23164B tested in accordance with IESNA LM-79-08.



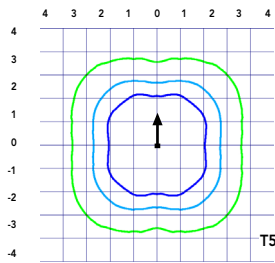
Test No. LT.L23222 tested in accordance with IESNA LM-79-08.



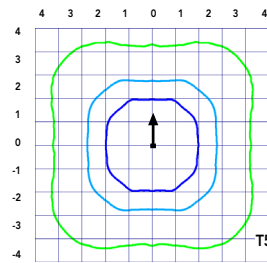
Test No. LT.L23271 tested in accordance with IESNA LM-79-08.



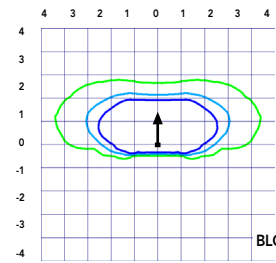
Test No. LT.L23211 tested in accordance with IESNA LM-79-08.



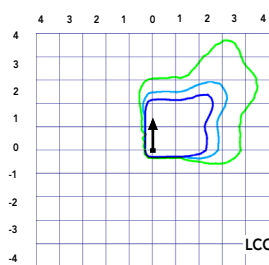
Test No. LT.L23164B tested in accordance with IESNA LM-79-08.



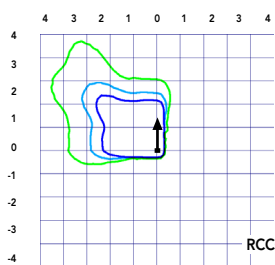
Test No. LT.L23222 tested in accordance with IESNA LM-79-08.



Test No. LT.L23271 tested in accordance with IESNA LM-79-08.



Test No. LT.L23211 tested in accordance with IESNA LM-79-08.



Test No. LT.L23164B tested in accordance with IESNA LM-79-08.

Performance Data

Lumen Ambient Temperature (LAT) Multipliers

Use these factors to determine relative lumen output for average ambient temperatures from 0-40°C (32-104°F).

Ambient		Lumen Multiplier
0°C	32°F	1.04
5°C	41°F	1.04
10°C	50°F	1.03
15°C	59°F	1.02
20°C	68°F	1.01
25°C	77°F	1.00
30°C	86°F	0.99
35°C	95°F	0.98
40°C	104°F	0.97

Projected LED Lumen Maintenance

Data references the extrapolated performance projections for the platforms noted in a **25°C ambient**, based on 10,000 hours of LED testing (tested per IESNA LM-80-08 and projected per IESNA TM-21-11).

To calculate LLF, use the lumen maintenance factor that corresponds to the desired number of operating hours below. For other lumen maintenance values, contact factory.

Operating Hours	Lumen Maintenance Factor
0	1.00
25,000	0.96
50,000	0.92
100,000	0.85

Motion Sensor Default Settings

Option	Dimmed State	High Level (when triggered)	Photocell Operation	Dwell Time	Ramp-up Time	Ramp-down Time
PIR or PIRH	3V (37%) Output	10V (100%) Output	Enabled @ 5FC	5 min	3 sec	5 min
*PIR1FC3V or PIRH1FC3V	3V (37%) Output	10V (100%) Output	Enabled @ 1FC	5 min	3 sec	5 min

*for use when motion sensor is used as dusk to dawn control.

Electrical Load

	Performance Package	LED Count	Drive Current	Wattage	Current (A)					
					120	208	240	277	347	480
Forward Optics (Non-Rotated)	P1	30	530	54	0.45	0.26	0.23	0.19	0.10	0.12
	P2	30	700	70	0.59	0.34	0.30	0.25	0.20	0.16
	P3	30	1050	102	0.86	0.50	0.44	0.38	0.30	0.22
	P4	30	1250	125	1.06	0.60	0.52	0.46	0.37	0.27
	P5	30	1400	138	1.16	0.67	0.58	0.51	0.40	0.29
	P6	40	1250	163	1.36	0.78	0.68	0.59	0.47	0.34
	P7	40	1400	183	1.53	0.88	0.76	0.66	0.53	0.38
	P8	60	1050	207	1.74	0.98	0.87	0.76	0.64	0.49
	P9	60	1250	241	2.01	1.16	1.01	0.89	0.70	0.51
Rotated Optics (Requires L90 or R90)	P10	60	530	106	0.90	0.52	0.47	0.43	0.33	0.27
	P11	60	700	137	1.15	0.67	0.60	0.53	0.42	0.32
	P12	60	1050	207	1.74	0.99	0.87	0.76	0.60	0.46
	P13	60	1250	231	1.93	1.12	0.97	0.86	0.67	0.49

Controls Options

Nomenclature	Description	Functionality	Primary control device	Notes
FA0	Field adjustable output device installed inside the luminaire; wired to the driver dimming leads.	Allows the luminaire to be manually dimmed, effectively trimming the light output.	FA0 device	Cannot be used with other controls options that need the 0-10V leads
DS	Drivers wired independently for 50/50 luminaire operation	The luminaire is wired to two separate circuits, allowing for 50/50 operation.	Independently wired drivers	Requires two separately switched circuits. Consider nLight AIR as a more cost effective alternative.
PERS or PER7	Twist-lock photocell receptacle	Compatible with standard twist-lock photocells for dusk to dawn operation, or advanced control nodes that provide 0-10V dimming signals.	Twist-lock photocells such as DLL Elite or advanced control nodes such as ROAM.	Pins 4 & 5 to dimming leads on driver, Pins 6 & 7 are capped inside luminaire
PIR or PIRH	Motion sensors with integral photocell. PIR for 8-15' mounting; PIRH for 15-30' mounting	Luminaires dim when no occupancy is detected.	Acuity Controls SBGR	Also available with PIRH1FC3V when the sensor photocell is used for dusk-to-dawn operation.
NLTAIR2 PIRHN	nLight AIR enabled luminaire for motion sensing, photocell and wireless communication.	Motion and ambient light sensing with group response. Scheduled dimming with motion sensor over-ride when wirelessly connected to the nLight Eclipse.	nLight Air rSDGR	nLight AIR sensors can be programmed and commissioned from the ground using the CIAIRity Pro app.

Lumen Output

Lumen values are from photometric tests performed in accordance with IESNA LM-79-08. Data is considered to be representative of the configurations shown, within the tolerances allowed by Lighting Facts. Contact factory for performance data on any configurations not shown here.

Forward Optics																			
LED Count	Drive Current	Power Package	System Watts	Dist. Type	30K (3000 K, 70 CRI)					40K (4000 K, 70 CRI)					50K (5000 K, 70 CRI)				
					Lumens	B	U	G	LPW	Lumens	B	U	G	LPW	Lumens	B	U	G	LPW
40	1250	P6	163W	T1S	17,654	3	0	3	108	19,018	3	0	3	117	19,259	3	0	3	118
				T2S	17,635	3	0	3	108	18,998	3	0	3	117	19,238	3	0	3	118
				T2M	17,726	3	0	3	109	19,096	3	0	3	117	19,337	3	0	3	119
				T3S	17,167	3	0	3	105	18,493	3	0	3	113	18,727	3	0	3	115
				T3M	17,683	3	0	3	108	19,049	3	0	3	117	19,290	3	0	3	118
				T4M	17,299	3	0	3	106	18,635	3	0	4	114	18,871	3	0	4	116
				TFTM	17,672	3	0	3	108	19,038	3	0	4	117	19,279	3	0	4	118
				TSVS	18,379	4	0	1	113	19,800	4	0	1	121	20,050	4	0	1	123
				T5S	18,394	4	0	2	113	19,816	4	0	2	122	20,066	4	0	2	123
				T5M	18,348	4	0	2	113	19,766	4	0	2	121	20,016	4	0	2	123
				TSW	18,228	5	0	3	112	19,636	5	0	3	120	19,885	5	0	3	122
				BLC	14,489	2	0	2	89	15,609	2	0	3	96	15,806	2	0	3	97
				LCCO	10,781	1	0	3	66	11,614	1	0	3	71	11,761	2	0	3	72
				RCCO	10,781	1	0	3	66	11,614	1	0	3	71	11,761	2	0	3	72
				40	1400	P7	183W	T1S	19,227	3	0	3	105	20,712	3	0	3	113	20,975
T2S	19,206	3	0					3	105	20,690	3	0	3	113	20,952	3	0	3	114
T2M	19,305	3	0					3	105	20,797	3	0	3	114	21,060	3	0	3	115
T3S	18,696	3	0					3	102	20,141	3	0	3	110	20,396	3	0	4	111
T3M	19,258	3	0					3	105	20,746	3	0	3	113	21,009	3	0	3	115
T4M	18,840	3	0					4	103	20,296	3	0	4	111	20,553	3	0	4	112
TFTM	19,246	3	0					4	105	20,734	3	0	4	113	20,996	3	0	4	115
TSVS	20,017	4	0					1	109	21,564	4	0	1	118	21,837	4	0	1	119
T5S	20,033	4	0					2	109	21,581	4	0	2	118	21,854	4	0	2	119
T5M	19,983	4	0					2	109	21,527	5	0	3	118	21,799	5	0	3	119
TSW	19,852	5	0					3	108	21,386	5	0	3	117	21,656	5	0	3	118
BLC	15,780	2	0					3	86	16,999	2	0	3	93	17,214	2	0	3	94
LCCO	11,742	2	0					3	64	12,649	2	0	3	69	12,809	2	0	3	70
RCCO	11,742	2	0					3	64	12,649	2	0	3	69	12,809	2	0	3	70
60	1050	P8	207W					T1S	22,490	3	0	3	109	24,228	3	0	3	117	24,535
				T2S	22,466	3	0	4	109	24,202	3	0	4	117	24,509	3	0	4	118
				T2M	22,582	3	0	3	109	24,327	3	0	3	118	24,635	3	0	3	119
				T3S	21,870	3	0	4	106	23,560	3	0	4	114	23,858	3	0	4	115
				T3M	22,527	3	0	4	109	24,268	3	0	4	117	24,575	3	0	4	119
				T4M	22,038	3	0	4	106	23,741	3	0	4	115	24,041	3	0	4	116
				TFTM	22,513	3	0	4	109	24,253	3	0	4	117	24,560	3	0	4	119
				TSVS	23,415	5	0	1	113	25,224	5	0	1	122	25,543	5	0	1	123
				T5S	23,434	4	0	2	113	25,244	4	0	2	122	25,564	4	0	2	123
				T5M	23,374	5	0	3	113	25,181	5	0	3	122	25,499	5	0	3	123
				TSW	23,221	5	0	4	112	25,016	5	0	4	121	25,332	5	0	4	122
				BLC	18,458	2	0	3	89	19,885	2	0	3	96	20,136	2	0	3	97
				LCCO	13,735	2	0	3	66	14,796	2	0	4	71	14,983	2	0	4	72
				RCCO	13,735	2	0	3	66	14,796	2	0	4	71	14,983	2	0	4	72
				60	1250	P9	241W	T1S	25,575	3	0	3	106	27,551	3	0	3	114	27,900
T2S	25,548	3	0					4	106	27,522	3	0	4	114	27,871	3	0	4	116
T2M	25,680	3	0					3	107	27,664	3	0	3	115	28,014	3	0	3	116
T3S	24,870	3	0					4	103	26,791	3	0	4	111	27,130	3	0	4	113
T3M	25,617	3	0					4	106	27,597	3	0	4	115	27,946	3	0	4	116
T4M	25,061	3	0					4	104	26,997	3	0	4	112	27,339	3	0	4	113
TFTM	25,602	3	0					4	106	27,580	3	0	4	114	27,929	3	0	4	116
TSVS	26,626	5	0					1	110	28,684	5	0	1	119	29,047	5	0	1	121
T5S	26,648	4	0					2	111	28,707	5	0	2	119	29,070	5	0	2	121
T5M	26,581	5	0					3	110	28,635	5	0	3	119	28,997	5	0	3	120
TSW	26,406	5	0					4	110	28,447	5	0	4	118	28,807	5	0	4	120
BLC	20,990	2	0					3	87	22,612	2	0	3	94	22,898	2	0	3	95
LCCO	15,619	2	0					4	65	16,825	2	0	4	70	17,038	2	0	4	71
RCCO	15,619	2	0					4	65	16,825	2	0	4	70	17,038	2	0	4	71

Lumen Output

Lumen values are from photometric tests performed in accordance with IESNA LM-79-08. Data is considered to be representative of the configurations shown, within the tolerances allowed by Lighting Facts. Contact factory for performance data on any configurations not shown here.

Rotated Optics																			
LED Count	Drive Current	Power Package	System Watts	Dist. Type	30K (3000 K, 70 CRI)					40K (4000 K, 70 CRI)					50K (5000 K, 70 CRI)				
					Lumens	B	U	G	LPW	Lumens	B	U	G	LPW	Lumens	B	U	G	LPW
60	530	P10	106W	T1S	13,042	3	0	3	123	14,050	3	0	3	133	14,228	3	0	3	134
				T2S	12,967	4	0	4	122	13,969	4	0	4	132	14,146	4	0	4	133
				T2M	13,201	3	0	3	125	14,221	3	0	3	134	14,401	3	0	3	136
				T3S	12,766	4	0	4	120	13,752	4	0	4	130	13,926	4	0	4	131
				T3M	13,193	4	0	4	124	14,213	4	0	4	134	14,393	4	0	4	136
				T4M	12,944	4	0	4	122	13,945	4	0	4	132	14,121	4	0	4	133
				TFTM	13,279	4	0	4	125	14,305	4	0	4	135	14,486	4	0	4	137
				TSVS	13,372	3	0	1	126	14,405	4	0	1	136	14,588	4	0	1	138
				T5S	13,260	3	0	1	125	14,284	3	0	1	135	14,465	3	0	1	136
				T5M	13,256	4	0	2	125	14,281	4	0	2	135	14,462	4	0	2	136
				TSW	13,137	4	0	3	124	14,153	4	0	3	134	14,332	4	0	3	135
				BLC	10,906	3	0	3	103	11,749	3	0	3	111	11,898	3	0	3	112
				LCCO	7,789	1	0	3	73	8,391	1	0	3	79	8,497	1	0	3	80
				RCCO	7,779	4	0	4	73	8,380	4	0	4	79	8,486	4	0	4	80
60	700	P11	137W	T1S	16,556	3	0	3	121	17,835	3	0	3	130	18,061	4	0	4	132
				T2S	16,461	4	0	4	120	17,733	4	0	4	129	17,957	4	0	4	131
				T2M	16,758	4	0	4	122	18,053	4	0	4	132	18,281	4	0	4	133
				T3S	16,205	4	0	4	118	17,457	4	0	4	127	17,678	4	0	4	129
				T3M	16,748	4	0	4	122	18,042	4	0	4	132	18,271	4	0	4	133
				T4M	16,432	4	0	4	120	17,702	4	0	4	129	17,926	4	0	4	131
				TFTM	16,857	4	0	4	123	18,159	4	0	4	133	18,389	4	0	4	134
				TSVS	16,975	4	0	1	124	18,287	4	0	1	133	18,518	4	0	1	135
				T5S	16,832	4	0	1	123	18,133	4	0	2	132	18,362	4	0	2	134
				T5M	16,828	4	0	2	123	18,128	4	0	2	132	18,358	4	0	2	134
				TSW	16,677	4	0	3	122	17,966	5	0	3	131	18,193	5	0	3	133
				BLC	13,845	3	0	3	101	14,915	3	0	3	109	15,103	3	0	3	110
				LCCO	9,888	1	0	3	72	10,652	2	0	3	78	10,787	2	0	3	79
				RCCO	9,875	4	0	4	72	10,638	4	0	4	78	10,773	4	0	4	79
60	1050	P12	207W	T1S	22,996	4	0	4	111	24,773	4	0	4	120	25,087	4	0	4	121
				T2S	22,864	4	0	4	110	24,631	5	0	5	119	24,943	5	0	5	120
				T2M	23,277	4	0	4	112	25,075	4	0	4	121	25,393	4	0	4	123
				T3S	22,509	4	0	4	109	24,248	5	0	5	117	24,555	5	0	5	119
				T3M	23,263	4	0	4	112	25,061	4	0	4	121	25,378	4	0	4	123
				T4M	22,824	5	0	5	110	24,588	5	0	5	119	24,899	5	0	5	120
				TFTM	23,414	5	0	5	113	25,223	5	0	5	122	25,543	5	0	5	123
				TSVS	23,579	5	0	1	114	25,401	5	0	1	123	25,722	5	0	1	124
				T5S	23,380	4	0	2	113	25,187	4	0	2	122	25,506	4	0	2	123
				T5M	23,374	5	0	3	113	25,181	5	0	3	122	25,499	5	0	3	123
				TSW	23,165	5	0	4	112	24,955	5	0	4	121	25,271	5	0	4	122
				BLC	19,231	4	0	4	93	20,717	4	0	4	100	20,979	4	0	4	101
				LCCO	13,734	2	0	3	66	14,796	2	0	4	71	14,983	2	0	4	72
				RCCO	13,716	4	0	4	66	14,776	4	0	4	71	14,963	4	0	4	72
60	1250	P13	231W	T1S	25,400	4	0	4	110	27,363	4	0	4	118	27,709	4	0	4	120
				T2S	25,254	5	0	5	109	27,205	5	0	5	118	27,550	5	0	5	119
				T2M	25,710	4	0	4	111	27,696	4	0	4	120	28,047	4	0	4	121
				T3S	24,862	5	0	5	108	26,783	5	0	5	116	27,122	5	0	5	117
				T3M	25,695	5	0	5	111	27,680	5	0	5	120	28,031	5	0	5	121
				T4M	25,210	5	0	5	109	27,158	5	0	5	118	27,502	5	0	5	119
				TFTM	25,861	5	0	5	112	27,860	5	0	5	121	28,212	5	0	5	122
				TSVS	26,043	5	0	1	113	28,056	5	0	1	121	28,411	5	0	1	123
				T5S	25,824	4	0	2	112	27,819	5	0	2	120	28,172	5	0	2	122
				T5M	25,818	5	0	3	112	27,813	5	0	3	120	28,165	5	0	3	122
				TSW	25,586	5	0	4	111	27,563	5	0	4	119	27,912	5	0	4	121
				BLC	21,241	4	0	4	92	22,882	4	0	4	99	23,172	4	0	4	100
				LCCO	15,170	2	0	4	66	16,342	2	0	4	71	16,549	2	0	4	72
				RCCO	15,150	5	0	5	66	16,321	5	0	5	71	16,527	5	0	5	72

Capable Luminaire

This item is an A+ capable luminaire, which has been designed and tested to provide consistent color appearance and system-level interoperability.

- All configurations of this luminaire meet the Acuity Brands' specification for chromatic consistency
- This luminaire is A+ Certified when ordered with DTL® controls marked by a shaded background. DTL DLL equipped luminaires meet the A+ specification for luminaire to photocontrol interoperability¹
- This luminaire is part of an A+ Certified solution for ROAM® or XPoint™ Wireless control networks, providing out-of-the-box control compatibility with simple commissioning, when ordered with drivers and control options marked by a shaded background¹

To learn more about A+, visit www.acuitybrands.com/aplus.

1. See ordering tree for details.
2. A+ Certified Solutions for ROAM require the order of one ROAM node per luminaire. Sold Separately: [Link to Roam](#); [Link to DTL DLL](#)

FEATURES & SPECIFICATIONS

INTENDED USE

The sleek design of the D-Series Size 1 reflects the embedded high performance LED technology. It is ideal for many commercial and municipal applications, such as parking lots, plazas, campuses, and streetscapes.

CONSTRUCTION

Single-piece die-cast aluminum housing has integral heat sink fins to optimize thermal management through conductive and convective cooling. Modular design allows for ease of maintenance and future light engine upgrades. The LED drivers are mounted in direct contact with the casting to promote low operating temperature and long life. Housing is completely sealed against moisture and environmental contaminants (IP65). Low EPA (1.01 ft²) for optimized pole wind loading.

FINISH

Exterior parts are protected by a zinc-infused Super Durable TGIC thermoset powder coat finish that provides superior resistance to corrosion and weathering. A tightly controlled multi-stage process ensures a minimum 3 mils thickness for a finish that can withstand extreme climate changes without cracking or peeling. Available in both textured and non-textured finishes.

OPTICS

Precision-molded proprietary acrylic lenses are engineered for superior area lighting distribution, uniformity, and pole spacing. Light engines are available in standard 3000 K, 4000 K and 5000 K (70 CRI) configurations. The D-Series Size 1 has zero uplight and qualifies as a Nighttime Friendly™ product, meaning it is consistent with the LEED® and Green Globes™ criteria for eliminating wasteful uplight.

ELECTRICAL

Light engine configurations consist of high-efficacy LEDs mounted to metal-core circuit boards to maximize heat dissipation and promote long life (up to L85/100,000 hours at 25°C). Class 1 electronic drivers are designed to have a power factor >90%, THD <20%, and an expected life of 100,000 hours with <1% failure rate. Easily serviceable 10kV surge protection device meets a minimum Category C Low operation (per ANSI/IEEE C62.41.2).

STANDARD CONTROLS

The DSX1 LED area luminaire has a number of control options. Dusk to dawn controls can be utilized via optional NEMA twist-lock photocell receptacles. Integrated motion sensors with on-board photocells feature field-adjustable programming and are suitable for mounting heights up to 30 feet.

nLIGHT AIR CONTROLS

The DSX1 LED area luminaire is also available with nLight® AIR for the ultimate in wireless control. This powerful controls platform provides out-of-the-box basic motion sensing and photocontrol functionality and is suitable for mounting heights up to 40 feet. Once commissioned using a smartphone and the easy-to-use CLAIRITY app, nLight AIR equipped luminaires can be grouped, resulting in motion sensor and photocell group response without the need for additional equipment. Scheduled dimming with motion sensor over-ride can be achieved when used with the nLight Eclipse. Additional information about nLight Air can be found here.

INSTALLATION

Included mounting block and integral arm facilitate quick and easy installation. Stainless steel bolts fasten the mounting block securely to poles and walls, enabling the D-Series Size 1 to withstand up to a 3.0 G vibration load rating per ANSI C136.31. The D-Series Size 1 utilizes the AERIS™ series pole drilling pattern (template #8). NEMA photocontrol receptacle are also available.

LISTINGS

UL Listed for wet locations. Light engines are IP66 rated; luminaire is IP65 rated. Rated for -40°C minimum ambient. U.S. Patent No. D672,492 S. International patent pending.

DesignLights Consortium® (DLC) Premium qualified product and DLC qualified product.

Not all versions of this product may be DLC Premium qualified or DLC qualified. Please check the DLC Qualified Products List at www.designlights.org/QPL to confirm which versions are qualified.

International Dark-Sky Association (IDA) Fixture Seal of Approval (FSA) is available for all products on this page utilizing 3000K color temperature only.

WARRANTY

5-year limited warranty. Complete warranty terms located at: www.acuitybrands.com/support/customer-support/terms-and-conditions

Note: Actual performance may differ as a result of end-user environment and application.

All values are design or typical values, measured under laboratory conditions at 25 °C.

Specifications subject to change without notice.





D-Series Size 0 LED Area Luminaire

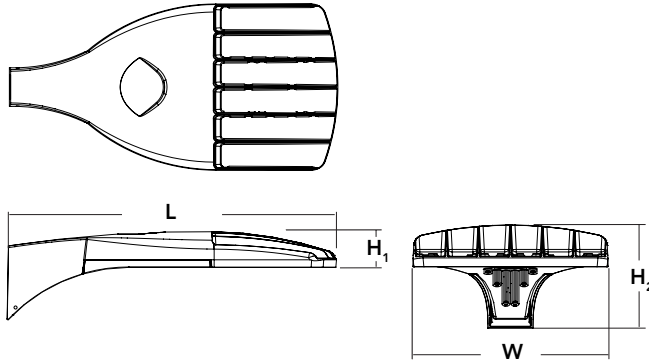
Catalog Number	
Notes	P2 P3
Type	

Hit the Tab key or mouse over the page to see all interactive elements.



Specifications

EPA:	0.95 ft ² (.09 m ²)
Length:	26" (66.0 cm)
Width:	13" (33.0 cm)
Height ₁ :	3" (7.62 cm)
Height ₂ :	7" (17.8 cm)
Weight (max):	16 lbs (7.25 kg)



Introduction

The modern styling of the D-Series is striking yet unobtrusive - making a bold, progressive statement even as it blends seamlessly with its environment. The D-Series distills the benefits of the latest in LED technology into a high performance, high efficacy, long-life luminaire. The outstanding photometric performance results in sites with excellent uniformity, greater pole spacing and lower power density. It is ideal for replacing up to 400W metal halide with typical energy savings of 70% and expected service life of over 100,000 hours.

A+ Capable options indicated by this color background.

Ordering Information

EXAMPLE: DSX0 LED P6 40K T3M MVOLT SPA NLTAIR2 PIRHN DDBXD

DSX0 LED	Series	LEDs	Color temperature	Distribution	Voltage	Mounting	
	DSX0 LED	Forward optics P1 P4 P7 P2 P5 P3 P6 Rotated optics P10 ¹ P12 ¹ P11 ¹ P13 ¹	30K 3000 K 40K 4000 K 50K 5000 K	T1S Type I short (Automotive) T2S Type II short T2M Type II medium T3S Type III short T3M Type III medium T4M Type IV medium TFTM Forward throw medium T5VS Type V very short ²	T5S Type V short ² T5M Type V medium ² T5W Type V wide ² BLC Backlight control ³ LCCO Left corner cutoff ³ RCCO Right corner cutoff ³	MVOLT ^{4,5} 120 ⁵ 208 ⁵ 240 ⁵ 277 ⁵ 347 ^{5,6} 480 ^{5,6}	Shipped included SPA Square pole mounting RPA Round pole mounting WBA Wall bracket ² SPUMBA Square pole universal mounting adaptor ⁷ RPUMBA Round pole universal mounting adaptor ⁷ Shipped separately KMA8 DDBXD U Mast arm mounting bracket adaptor (specify finish) ⁸

Control options	Other options	Finish (required)	
Shipped installed NLTAIR2 nLight AIR generation 2 enabled ^{9,10} PIRHN Network, high/low motion/ambient sensor ¹¹ PER NEMA twist-lock receptacle only (control ordered separate) ¹² PER5 Five-pin receptacle only (control ordered separate) ^{12,13} PER7 Seven-pin receptacle only (leads exit fixture) (control ordered separate) ^{12,13} DMG 0-10V dimming extend out back of housing for external control (control ordered separate) ¹⁴	PIR High/low, motion/ambient sensor, 8-15' mounting height, ambient sensor enabled at 5fc ^{15,16} PIRH High/low, motion/ambient sensor, 15-30' mounting height, ambient sensor enabled at 5fc ^{15,16} PIR1FC3V High/low, motion/ambient sensor, 8-15' mounting height, ambient sensor enabled at 1fc ^{15,16} PIRH1FC3V High/low, motion/ambient sensor, 15-30' mounting height, ambient sensor enabled at 1fc ^{15,16} FAO Field adjustable output ¹⁷	Shipped installed HS House-side shield ¹⁸ SF Single fuse (120, 277, 347V) ⁵ DF Double fuse (208, 240, 480V) ⁵ L90 Left rotated optics ¹ R90 Right rotated optics ¹ DDL Diffused drop lens ¹⁸ Shipped separately BS Bird spikes ¹⁹ EGS External glare shield	DDBXD Dark bronze DBLXD Black DNAXD Natural aluminum DWHXD White DDBTXD Textured dark bronze DBLBXD Textured black DNATXD Textured natural aluminum DWHGXD Textured white



Ordering Information

Accessories

Ordered and shipped separately.

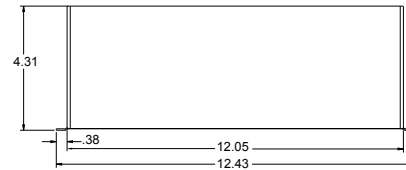
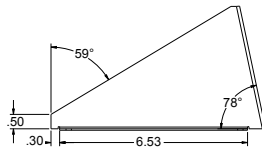
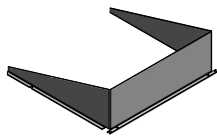
DLL127F 1.5 JU	Photocell - SSL twist-lock (120-277V) ²⁰
DLL347F 1.5 CUL JU	Photocell - SSL twist-lock (347V) ²⁰
DLL480F 1.5 CUL JU	Photocell - SSL twist-lock (480V) ²⁰
DSHORT SBK U	Shorting cap ²³
DSX0HS 20C U	House-side shield for P1,P2,P3 and P4 ¹⁸
DSX0HS 30C U	House-side shield for P10,P11,P12 and P13 ¹⁸
DSX0HS 40C U	House-side shield for P5,P6 and P7 ¹⁸
DSX0DDL U	Diffused drop lens (polycarbonate) ¹⁸
PUMBA DDBXD U*	Square and round pole universal mounting bracket adaptor (specify finish) ²¹
KMA8 DDBXD U	Mast arm mounting bracket adaptor (specify finish) ¹⁷
DSX0EGS (FINISH) U	External glare shield

For more control options, visit [DTL](#) and [ROAM](#) online. Link to [nLight Air 2](#)

NOTES

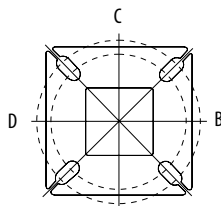
- P10, P11, P12 and P13 and rotated options (L90 or R90) only available together.
- Any Type 5 distribution with photocell, is not available with WBA.
- Not available with HS or DDL.
- MVOLT driver operates on any line voltage from 120-277V (50/60 Hz).
- Single fuse (SF) requires 120V, 277V or 347V. Double fuse (DF) requires 208V, 240V or 480V.
- Not available with BL30, BL50 or PNMT options.
- Universal mounting brackets intended for retrofit on existing pre-drilled poles only. 1.5 G vibration load rating per ANCI C136.31.
- Must order fixture with SPA mounting. Must be ordered as a separate accessory; see Accessories information. For use with 2-3/8" mast arm (not included).
- Must be ordered with PIRHN.
- Sensor cover available only in dark bronze, black, white and natural aluminum colors.
- Must be ordered with NLTAIR2. For more information on nLight Air 2 visit [this link](#).
- Photocell ordered and shipped as a separate line item from Acuity Brands Controls. See accessories. Shorting Cap included.
- If ROAM[®] node required, it must be ordered and shipped as a separate line item from Acuity Brands Controls. Shorting Cap included.
- DMG not available with PIRHN, PER5, PER7, PIR, PIRH, PIR1FC3V or PIR1FC3V.
- Reference Motion Sensor table on page 3.
- Reference PER Table on page 3 to see functionality.
- Not available with other dimming controls options.
- Not available with BLC, LCCO and RCCO distribution.
- Must be ordered with fixture for factory pre-drilling.
- Requires luminaire to be specified with PER, PER5 or PER7 option. See PER Table on page 3.
- For retrofit use only.

EGS – External Glare Shield

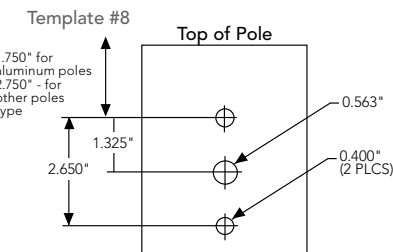


Drilling

HANDHOLE ORIENTATION (from top of pole)



A
Handhole



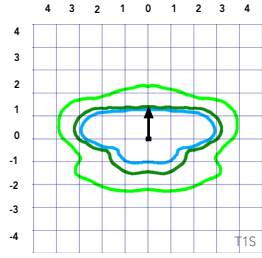
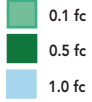
Tenon Mounting Slipfitter

Tenon O.D.	Single Unit	2 at 180°	2 at 90°	3 at 120°	3 at 90°	4 at 90°
2-3/8"	AST20-190	AST20-280	AST20-290	AST20-320	AST20-390	AST20-490
2-7/8"	AST25-190	AST25-280	AST25-290	AST25-320	AST25-390	AST25-490
4"	AST35-190	AST35-280	AST35-290	AST35-320	AST35-390	AST35-490

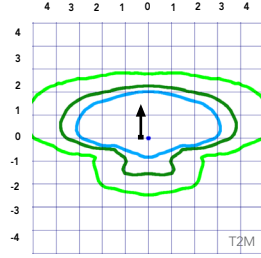
Mounting Option	Drilling Template	Single	2 @ 180	2 @ 90	3 @ 90	3 @ 120	4 @ 90
Head Location		Side B	Side B & D	Side B & C	Side B, C & D	Round Pole Only	Side A, B, C & D
Drill Nomenclature	#8	DM19AS	DM28AS	DM29AS	DM39AS	DM32AS	DM49AS
Minimum Acceptable Outside Pole Dimension							
SPA	#8	2-7/8"	2-7/8"	3.5"	3.5"		3.5"
RPA	#8	2-7/8"	2-7/8"	3.5"	3.5"	3"	3.5"
SPUMBA	#5	2-7/8"	3"	4"	4"		4"
RPUMBA	#5	2-7/8"	3.5"	5"	5"	3.5"	5"

Isofootcandle plots for the DSX0 LED 40C 1000 40K. Distances are in units of mounting height (20').

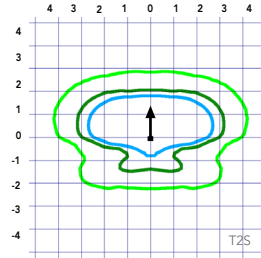
LEGEND



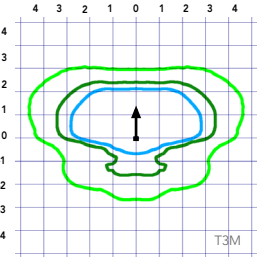
Test No.



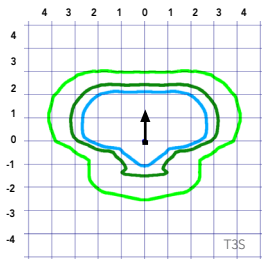
Test No.



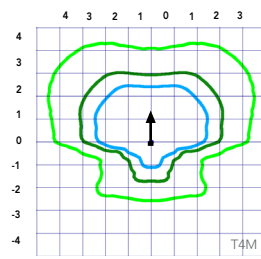
Test No. LTL23457P25 tested in accordance with IESNA LM-79-08.



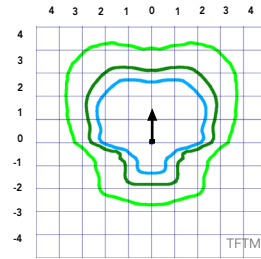
Test No. LTL23457P25 tested in accordance with IESNA LM-79-08.



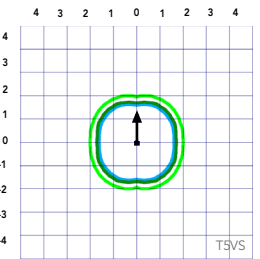
Test No. LTL23457P25 tested in accordance with IESNA LM-79-08.



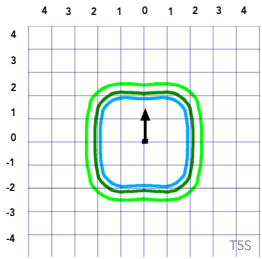
Test No.



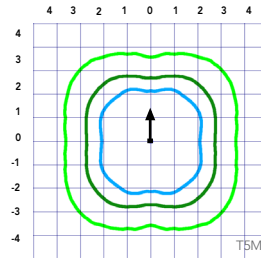
Test No.



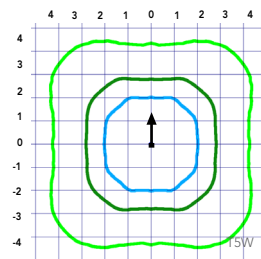
Test No.



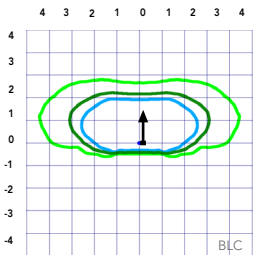
Test No.



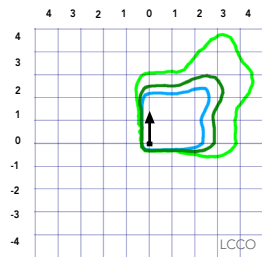
Test No.



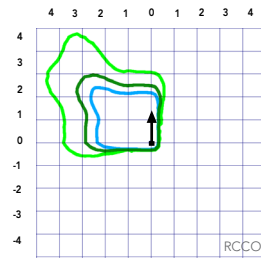
Test No. LTL23451P25 tested in accordance with IESNA LM-79-08.



Test No.



Test No.



Test No.

Performance Data

Lumen Ambient Temperature (LAT) Multipliers

Use these factors to determine relative lumen output for average ambient temperatures from 0-40°C (32-104°F).

Ambient		Lumen Multiplier
0°C	32°F	1.04
5°C	41°F	1.04
10°C	50°F	1.03
15°C	59°F	1.02
20°C	68°F	1.01
25°C	77°C	1.00
30°C	86°F	0.99
35°C	95°F	0.98
40°C	104°F	0.97

Projected LED Lumen Maintenance

Data references the extrapolated performance projections for the platforms noted in a **25°C ambient**, based on 10,000 hours of LED testing (tested per IESNA LM-80-08 and projected per IESNA TM-21-11).

To calculate LLF, use the lumen maintenance factor that corresponds to the desired number of operating hours below. For other lumen maintenance values, contact factory.

Operating Hours	Lumen Maintenance Factor
25,000	0.96
50,000	0.92
100,000	0.85

Motion Sensor Default Settings						
Option	Dimmed State	High Level (when triggered)	Photocell Operation	Dwell Time	Ramp-up Time	Ramp-down Time
PIR or PIRH	3V (37%) Output	10V (100%) Output	Enabled @ 5FC	5 min	3 sec	5 min
*PIR1FC3V or PIRH1FC3V	3V (37%) Output	10V (100%) Output	Enabled @ 1FC	5 min	3 sec	5 min

*for use with separate Dusk to Dawn or timer.

Controls Options

Nomenclature	Description	Functionality	Primary control device	Notes
FAO	Field adjustable output device installed inside the luminaire; wired to the driver dimming leads.	Allows the luminaire to be manually dimmed, effectively trimming the light output.	FAO device	Cannot be used with other controls options that need the 0-10V leads
DS	Drivers wired independently for 50/50 luminaire operation	The luminaire is wired to two separate circuits, allowing for 50/50 operation.	Independently wired drivers	Requires two separately switched circuits. Consider nLight AIR as a more cost effective alternative.
PERS or PER7	Twist-lock photocell receptacle	Compatible with standard twist-lock photocells for dusk to dawn operation, or advanced control nodes that provide 0-10V dimming signals.	Twist-lock photocells such as DLL Elite or advanced control nodes such as ROAM.	Pins 4 & 5 to dimming leads on driver, Pins 6 & 7 are capped inside luminaire
PIR or PIRH	Motion sensors with integral photocell. PIR for 8-15' mounting; PIRH for 15-30' mounting	Luminaires dim when no occupancy is detected.	Acuity Controls SBGR	Also available with PIRH1FC3V when the sensor photocell is used for dusk-to-dawn operation.
NLTAIR2 PIRHN	nLight AIR enabled luminaire for motion sensing, photocell and wireless communication.	Motion and ambient light sensing with group response. Scheduled dimming with motion sensor over-ride when wirelessly connected to the nLight Eclipse.	nLight Air rSDGR	nLight AIR sensors can be programmed and commissioned from the ground using the CIAIRity Pro app.

Electrical Load

					Current (A)					
	Performance Package	LED Count	Drive Current	Wattage	120	208	240	277	347	480
Forward Optics (Non-Rotated)	P1	20	530	38	0.32	0.18	0.15	0.15	0.10	0.08
	P2	20	700	49	0.41	0.23	0.20	0.19	0.14	0.11
	P3	20	1050	71	0.60	0.37	0.32	0.27	0.21	0.15
	P4	20	1400	92	0.77	0.45	0.39	0.35	0.28	0.20
	P5	40	700	89	0.74	0.43	0.38	0.34	0.26	0.20
	P6	40	1050	134	1.13	0.65	0.55	0.48	0.39	0.29
	P7	40	1300	166	1.38	0.80	0.69	0.60	0.50	0.37
Rotated Optics (Requires L90 or R90)	P10	30	530	53	0.45	0.26	0.23	0.21	0.16	0.12
	P11	30	700	72	0.60	0.35	0.30	0.27	0.20	0.16
	P12	30	1050	104	0.88	0.50	0.44	0.39	0.31	0.23
	P13	30	1300	128	1.08	0.62	0.54	0.48	0.37	0.27

Performance Data

Lumen Output

Lumen values are from photometric tests performed in accordance with IESNA LM-79-08. Data is considered to be representative of the configurations shown, within the tolerances allowed by Lighting Facts. Contact factory for performance data on any configurations not shown here.

Forward Optics																							
Power Package	LED Count	Drive Current	System Watts	Dist. Type	30K (3000 K, 70 CRI)					40K (4000 K, 70 CRI)					50K (5000 K, 70 CRI)								
					Lumens	B	U	G	LPW	Lumens	B	U	G	LPW	Lumens	B	U	G	LPW				
P1	20	530	38W	T1S	4,369	1	0	1	115	4,706	1	0	1	124	4,766	1	0	1	125				
				T2S	4,364	1	0	1	115	4,701	1	0	1	124	4,761	1	0	1	125				
				T2M	4,387	1	0	1	115	4,726	1	0	1	124	4,785	1	0	1	126				
				T3S	4,248	1	0	1	112	4,577	1	0	1	120	4,634	1	0	1	122				
				T3M	4,376	1	0	1	115	4,714	1	0	1	124	4,774	1	0	1	126				
				T4M	4,281	1	0	1	113	4,612	1	0	2	121	4,670	1	0	2	123				
				TFTM	4,373	1	0	1	115	4,711	1	0	2	124	4,771	1	0	2	126				
				TSVS	4,548	2	0	0	120	4,900	2	0	0	129	4,962	2	0	0	131				
				TSS	4,552	2	0	0	120	4,904	2	0	0	129	4,966	2	0	0	131				
				TSM	4,541	3	0	1	120	4,891	3	0	1	129	4,953	3	0	1	130				
				TSW	4,576	3	0	2	120	4,929	3	0	2	130	4,992	3	0	2	131				
				BLC	3,586	1	0	1	94	3,863	1	0	1	102	3,912	1	0	1	103				
				LCCO	2,668	1	0	1	70	2,874	1	0	2	76	2,911	1	0	2	77				
				RCCO	2,668	1	0	1	70	2,874	1	0	2	76	2,911	1	0	2	77				
				P2	20	700	49W	T1S	5,570	1	0	1	114	6,001	1	0	1	122	6,077	2	0	2	124
								T2S	5,564	1	0	2	114	5,994	1	0	2	122	6,070	2	0	2	124
T2M	5,593	1	0					1	114	6,025	1	0	1	123	6,102	1	0	1	125				
T3S	5,417	1	0					2	111	5,835	1	0	2	119	5,909	2	0	2	121				
T3M	5,580	1	0					2	114	6,011	1	0	2	123	6,087	1	0	2	124				
T4M	5,458	1	0					2	111	5,880	1	0	2	120	5,955	1	0	2	122				
TFTM	5,576	1	0					2	114	6,007	1	0	2	123	6,083	1	0	2	124				
TSVS	5,799	2	0					0	118	6,247	2	0	0	127	6,327	2	0	0	129				
TSS	5,804	2	0					0	118	6,252	2	0	0	128	6,332	2	0	1	129				
TSM	5,789	3	0					1	118	6,237	3	0	1	127	6,316	3	0	1	129				
TSW	5,834	3	0					2	119	6,285	3	0	2	128	6,364	3	0	2	130				
BLC	4,572	1	0					1	93	4,925	1	0	1	101	4,987	1	0	1	102				
LCCO	3,402	1	0					2	69	3,665	1	0	2	75	3,711	1	0	2	76				
RCCO	3,402	1	0					2	69	3,665	1	0	2	75	3,711	1	0	2	76				
P3	20	1050	71W					T1S	7,833	2	0	2	110	8,438	2	0	2	119	8,545	2	0	2	120
								T2S	7,825	2	0	2	110	8,429	2	0	2	119	8,536	2	0	2	120
				T2M	7,865	2	0	2	111	8,473	2	0	2	119	8,580	2	0	2	121				
				T3S	7,617	2	0	2	107	8,205	2	0	2	116	8,309	2	0	2	117				
				T3M	7,846	2	0	2	111	8,452	2	0	2	119	8,559	2	0	2	121				
				T4M	7,675	2	0	2	108	8,269	2	0	2	116	8,373	2	0	2	118				
				TFTM	7,841	2	0	2	110	8,447	2	0	2	119	8,554	2	0	2	120				
				TSVS	8,155	3	0	0	115	8,785	3	0	0	124	8,896	3	0	0	125				
				TSS	8,162	3	0	1	115	8,792	3	0	1	124	8,904	3	0	1	125				
				TSM	8,141	3	0	2	115	8,770	3	0	2	124	8,881	3	0	2	125				
				TSW	8,204	3	0	2	116	8,838	4	0	2	124	8,950	4	0	2	126				
				BLC	6,429	1	0	2	91	6,926	1	0	2	98	7,013	1	0	2	99				
				LCCO	4,784	1	0	2	67	5,153	1	0	2	73	5,218	1	0	2	73				
				RCCO	4,784	1	0	2	67	5,153	1	0	2	73	5,218	1	0	2	73				
				P4	20	1400	92W	T1S	9,791	2	0	2	106	10,547	2	0	2	115	10,681	2	0	2	116
								T2S	9,780	2	0	2	106	10,536	2	0	2	115	10,669	2	0	2	116
T2M	9,831	2	0					2	107	10,590	2	0	2	115	10,724	2	0	2	117				
T3S	9,521	2	0					2	103	10,256	2	0	2	111	10,386	2	0	2	113				
T3M	9,807	2	0					2	107	10,565	2	0	2	115	10,698	2	0	2	116				
T4M	9,594	2	0					2	104	10,335	2	0	3	112	10,466	2	0	3	114				
TFTM	9,801	2	0					2	107	10,558	2	0	2	115	10,692	2	0	2	116				
TSVS	10,193	3	0					1	111	10,981	3	0	1	119	11,120	3	0	1	121				
TSS	10,201	3	0					1	111	10,990	3	0	1	119	11,129	3	0	1	121				
TSM	10,176	4	0					2	111	10,962	4	0	2	119	11,101	4	0	2	121				
TSW	10,254	4	0					3	111	11,047	4	0	3	120	11,186	4	0	3	122				
BLC	8,036	1	0					2	87	8,656	1	0	2	94	8,766	1	0	2	95				
LCCO	5,979	1	0					2	65	6,441	1	0	2	70	6,523	1	0	3	71				
									5,979	1	0	2	65	6,441	1	0	2	70	6,523	1	0	3	71

Performance Data

Lumen Output

Lumen values are from photometric tests performed in accordance with IESNA LM-79-08. Data is considered to be representative of the configurations shown, within the tolerances allowed by Lighting Facts. Contact factory for performance data on any configurations not shown here.

Forward Optics																			
Power Package	LED Count	Drive Current	System Watts	Dist. Type	30K (3000 K, 70 CRI)					40K (4000 K, 70 CRI)					50K (5000 K, 70 CRI)				
					Lumens	B	U	G	LPW	Lumens	B	U	G	LPW	Lumens	B	U	G	LPW
P5	40	700	89W	T1S	10,831	2	0	2	122	11,668	2	0	2	131	11,816	2	0	2	133
				T2S	10,820	2	0	2	122	11,656	2	0	2	131	11,803	2	0	2	133
				T2M	10,876	2	0	2	122	11,716	2	0	2	132	11,864	2	0	2	133
				T3S	10,532	2	0	2	118	11,346	2	0	2	127	11,490	2	0	2	129
				T3M	10,849	2	0	2	122	11,687	2	0	2	131	11,835	2	0	2	133
				T4M	10,613	2	0	3	119	11,434	2	0	3	128	11,578	2	0	3	130
				TFTM	10,842	2	0	2	122	11,680	2	0	2	131	11,828	2	0	2	133
				TSVS	11,276	3	0	1	127	12,148	3	0	1	136	12,302	3	0	1	138
				T5S	11,286	3	0	1	127	12,158	3	0	1	137	12,312	3	0	1	138
				T5M	11,257	4	0	2	126	12,127	4	0	2	136	12,280	4	0	2	138
				T5W	11,344	4	0	3	127	12,221	4	0	3	137	12,375	4	0	3	139
				BLC	8,890	1	0	2	100	9,576	1	0	2	108	9,698	1	0	2	109
				LCCO	6,615	1	0	3	74	7,126	1	0	3	80	7,216	1	0	3	81
				RCCO	6,615	1	0	3	74	7,126	1	0	3	80	7,216	1	0	3	81
P6	40	1050	134W	T1S	14,805	3	0	3	110	15,949	3	0	3	119	16,151	3	0	3	121
				T2S	14,789	3	0	3	110	15,932	3	0	3	119	16,134	3	0	3	120
				T2M	14,865	3	0	3	111	16,014	3	0	3	120	16,217	3	0	3	121
				T3S	14,396	3	0	3	107	15,509	3	0	3	116	15,705	3	0	3	117
				T3M	14,829	2	0	3	111	15,975	3	0	3	119	16,177	3	0	3	121
				T4M	14,507	2	0	3	108	15,628	3	0	3	117	15,826	3	0	3	118
				TFTM	14,820	2	0	3	111	15,965	3	0	3	119	16,167	3	0	3	121
				TSVS	15,413	4	0	1	115	16,604	4	0	1	124	16,815	4	0	1	125
				T5S	15,426	3	0	1	115	16,618	4	0	1	124	16,828	4	0	1	126
				T5M	15,387	4	0	2	115	16,576	4	0	2	124	16,786	4	0	2	125
				T5W	15,506	4	0	3	116	16,704	4	0	3	125	16,915	4	0	3	126
				BLC	12,151	1	0	2	91	13,090	1	0	2	98	13,255	1	0	2	99
				LCCO	9,041	1	0	3	67	9,740	1	0	3	73	9,863	1	0	3	74
				RCCO	9,041	1	0	3	67	9,740	1	0	3	73	9,863	1	0	3	74
P7	40	1300	166W	T1S	17,023	3	0	3	103	18,338	3	0	3	110	18,570	3	0	3	112
				T2S	17,005	3	0	3	102	18,319	3	0	3	110	18,551	3	0	3	112
				T2M	17,092	3	0	3	103	18,413	3	0	3	111	18,646	3	0	3	112
				T3S	16,553	3	0	3	100	17,832	3	0	3	107	18,058	3	0	3	109
				T3M	17,051	3	0	3	103	18,369	3	0	3	111	18,601	3	0	3	112
				T4M	16,681	3	0	3	100	17,969	3	0	3	108	18,197	3	0	3	110
				TFTM	17,040	3	0	3	103	18,357	3	0	4	111	18,590	3	0	4	112
				TSVS	17,723	4	0	1	107	19,092	4	0	1	115	19,334	4	0	1	116
				T5S	17,737	4	0	2	107	19,108	4	0	2	115	19,349	4	0	2	117
				T5M	17,692	4	0	2	107	19,059	4	0	2	115	19,301	4	0	2	116
				T5W	17,829	5	0	3	107	19,207	5	0	3	116	19,450	5	0	3	117
				BLC	13,971	2	0	2	84	15,051	2	0	2	91	15,241	2	0	2	92
				LCCO	10,396	1	0	3	63	11,199	1	0	3	67	11,341	1	0	3	68
					10,396	1	0	3	63	11,199	1	0	3	67	11,341	1	0	3	68

Performance Data

Lumen Output

Lumen values are from photometric tests performed in accordance with IESNA LM-79-08. Data is considered to be representative of the configurations shown, within the tolerances allowed by Lighting Facts. Contact factory for performance data on any configurations not shown here.

Rotated Optics																			
Power Package	LED Count	Drive Current	System Watts	Dist. Type	30K (3000 K, 70 CRI)					40K (4000 K, 70 CRI)					50K (5000 K, 70 CRI)				
					Lumens	B	U	G	LPW	Lumens	B	U	G	LPW	Lumens	B	U	G	LPW
P10	30	530	53W	T1S	6,727	2	0	2	127	7,247	3	0	3	137	7,339	3	0	3	138
				T2S	6,689	3	0	3	126	7,205	3	0	3	136	7,297	3	0	3	138
				T2M	6,809	3	0	3	128	7,336	3	0	3	138	7,428	3	0	3	140
				T3S	6,585	3	0	3	124	7,094	3	0	3	134	7,183	3	0	3	136
				T3M	6,805	3	0	3	128	7,331	3	0	3	138	7,424	3	0	3	140
				T4M	6,677	3	0	3	126	7,193	3	0	3	136	7,284	3	0	3	137
				TFTM	6,850	3	0	3	129	7,379	3	0	3	139	7,472	3	0	3	141
				TSVS	6,898	3	0	0	130	7,431	3	0	0	140	7,525	3	0	0	142
				T5S	6,840	2	0	1	129	7,368	2	0	1	139	7,461	2	0	1	141
				TSM	6,838	3	0	1	129	7,366	3	0	2	139	7,460	3	0	2	141
				TSW	6,777	3	0	2	128	7,300	3	0	2	138	7,393	3	0	2	139
				BLC	5,626	2	0	2	106	6,060	2	0	2	114	6,137	2	0	2	116
				LCCO	4,018	1	0	2	76	4,328	1	0	2	82	4,383	1	0	2	83
				RCCO	4,013	3	0	3	76	4,323	3	0	3	82	4,377	3	0	3	83
P11	30	700	72W	T1S	8,594	3	0	3	119	9,258	3	0	3	129	9,376	3	0	3	130
				T2S	8,545	3	0	3	119	9,205	3	0	3	128	9,322	3	0	3	129
				T2M	8,699	3	0	3	121	9,371	3	0	3	130	9,490	3	0	3	132
				T3S	8,412	3	0	3	117	9,062	3	0	3	126	9,177	3	0	3	127
				T3M	8,694	3	0	3	121	9,366	3	0	3	130	9,484	3	0	3	132
				T4M	8,530	3	0	3	118	9,189	3	0	3	128	9,305	3	0	3	129
				TFTM	8,750	3	0	3	122	9,427	3	0	3	131	9,546	3	0	3	133
				TSVS	8,812	3	0	0	122	9,493	3	0	0	132	9,613	3	0	0	134
				T5S	8,738	3	0	1	121	9,413	3	0	1	131	9,532	3	0	1	132
				TSM	8,736	3	0	2	121	9,411	3	0	2	131	9,530	3	0	2	132
				TSW	8,657	4	0	2	120	9,326	4	0	2	130	9,444	4	0	2	131
				BLC	7,187	3	0	3	100	7,742	3	0	3	108	7,840	3	0	3	109
				LCCO	5,133	1	0	2	71	5,529	1	0	2	77	5,599	1	0	2	78
				RCCO	5,126	3	0	3	71	5,522	3	0	3	77	5,592	3	0	3	78
P12	30	1050	104W	T1S	12,149	3	0	3	117	13,088	3	0	3	126	13,253	3	0	3	127
				T2S	12,079	4	0	4	116	13,012	4	0	4	125	13,177	4	0	4	127
				T2M	12,297	3	0	3	118	13,247	3	0	3	127	13,415	3	0	3	129
				T3S	11,891	4	0	4	114	12,810	4	0	4	123	12,972	4	0	4	125
				T3M	12,290	3	0	3	118	13,239	4	0	4	127	13,407	4	0	4	129
				T4M	12,058	4	0	4	116	12,990	4	0	4	125	13,154	4	0	4	126
				TFTM	12,369	4	0	4	119	13,325	4	0	4	128	13,494	4	0	4	130
				TSVS	12,456	3	0	1	120	13,419	3	0	1	129	13,589	4	0	1	131
				T5S	12,351	3	0	1	119	13,306	3	0	1	128	13,474	3	0	1	130
				TSM	12,349	4	0	2	119	13,303	4	0	2	128	13,471	4	0	2	130
				TSW	12,238	4	0	3	118	13,183	4	0	3	127	13,350	4	0	3	128
				BLC	10,159	3	0	3	98	10,944	3	0	3	105	11,083	3	0	3	107
				LCCO	7,256	1	0	3	70	7,816	1	0	3	75	7,915	1	0	3	76
				RCCO	7,246	3	0	3	70	7,806	4	0	4	75	7,905	4	0	4	76
P13	30	1300	128W	T1S	14,438	3	0	3	113	15,554	3	0	3	122	15,751	3	0	3	123
				T2S	14,355	4	0	4	112	15,465	4	0	4	121	15,660	4	0	4	122
				T2M	14,614	3	0	3	114	15,744	4	0	4	123	15,943	4	0	4	125
				T3S	14,132	4	0	4	110	15,224	4	0	4	119	15,417	4	0	4	120
				T3M	14,606	4	0	4	114	15,735	4	0	4	123	15,934	4	0	4	124
				T4M	14,330	4	0	4	112	15,438	4	0	4	121	15,633	4	0	4	122
				TFTM	14,701	4	0	4	115	15,836	4	0	4	124	16,037	4	0	4	125
				TSVS	14,804	4	0	1	116	15,948	4	0	1	125	16,150	4	0	1	126
				T5S	14,679	3	0	1	115	15,814	3	0	1	124	16,014	3	0	1	125
				TSM	14,676	4	0	2	115	15,810	4	0	2	124	16,010	4	0	2	125
				TSW	14,544	4	0	3	114	15,668	4	0	3	122	15,866	4	0	3	124
				BLC	7,919	3	0	3	62	8,531	3	0	3	67	8,639	3	0	3	67
				LCCO	5,145	1	0	2	40	5,543	1	0	2	43	5,613	1	0	2	44
					5,139	3	0	3	40	5,536	3	0	3	43	5,606	3	0	3	44

Capable Luminaire

This item is an A+ capable luminaire, which has been designed and tested to provide consistent color appearance and system-level interoperability.

- All configurations of this luminaire meet the Acuity Brands' specification for chromatic consistency
- This luminaire is A+ Certified when ordered with DTL® controls marked by a shaded background. DTL DLL equipped luminaires meet the A+ specification for luminaire to photocontrol interoperability¹
- This luminaire is part of an A+ Certified solution for ROAM® or XPoint™ Wireless control networks, providing out-of-the-box control compatibility with simple commissioning, when ordered with drivers and control options marked by a shaded background¹

To learn more about A+, visit www.acuitybrands.com/aplus.

1. See ordering tree for details.
2. A+ Certified Solutions for ROAM require the order of one ROAM node per luminaire.
Sold Separately: [Link to Roam](#); [Link to DTL DLL](#)

FEATURES & SPECIFICATIONS

INTENDED USE

The sleek design of the D-Series Size 0 reflects the embedded high performance LED technology. It is ideal for many commercial and municipal applications, such as parking lots, plazas, campuses, and pedestrian areas.

CONSTRUCTION

Single-piece die-cast aluminum housing has integral heat sink fins to optimize thermal management through conductive and convective cooling. Modular design allows for ease of maintenance and future light engine upgrades. The LED driver is mounted in direct contact with the casting to promote low operating temperature and long life. Housing is completely sealed against moisture and environmental contaminants (IP65). Low EPA (0.95 ft²) for optimized pole wind loading.

FINISH

Exterior parts are protected by a zinc-infused Super Durable TGIC thermoset powder coat finish that provides superior resistance to corrosion and weathering. A tightly controlled multi-stage process ensures a minimum 3 mils thickness for a finish that can withstand extreme climate changes without cracking or peeling. Available in both textured and non-textured finishes.

OPTICS

Precision-molded proprietary acrylic lenses are engineered for superior area lighting distribution, uniformity, and pole spacing. Light engines are available in 3000 K, 4000 K or 5000 K (70 CRI) configurations. The D-Series Size 0 has zero uplight and qualifies as a Nighttime Friendly™ product, meaning it is consistent with the LEED® and Green Globes™ criteria for eliminating wasteful uplight.

ELECTRICAL

Light engine(s) configurations consist of high-efficacy LEDs mounted to metal-core circuit boards to maximize heat dissipation and promote long life (up to L85/100,000 hours at 25°C). Class 1 electronic drivers are designed to have a power factor >90%, THD <20%, and an expected life of 100,000 hours with <1% failure rate. Easily serviceable 10kV surge protection device meets a minimum Category C Low operation (per ANSI/IEEE C62.41.2).

STANDARD CONTROLS

The DSX0 LED area luminaire has a number of control options. Dusk to dawn controls can be utilized via optional NEMA twist-lock photocell receptacles. Integrated motion sensors with on-board photocells feature field-adjustable programming and are suitable for mounting heights up to 30 feet.

nLIGHT AIR CONTROLS

The DSX0 LED area luminaire is also available with nLight® AIR for the ultimate in wireless control. This powerful controls platform provides out-of-the-box basic motion sensing and photocontrol functionality and is suitable for mounting heights up to 40 feet. Once commissioned using a smartphone and the easy-to-use CLAIRITY app, nLight AIR equipped luminaires can be grouped, resulting in motion sensor and photocell group response without the need for additional equipment. Scheduled dimming with motion sensor over-ride can be achieved when used with the nLight Eclipse. Additional information about nLight Air can be found [here](#).

INSTALLATION

Included mounting block and integral arm facilitate quick and easy installation. Stainless steel bolts fasten the mounting block securely to poles and walls, enabling the D-Series Size 0 to withstand up to a 3.0 G vibration load rating per ANSI C136.31. The D-Series Size 0 utilizes the AERIS™ series pole drilling pattern (template #8). Optional terminal block and NEMA photocell receptacle are also available.

LISTINGS

UL Listed for wet locations. Light engines are IP66 rated; luminaire is IP65 rated. Rated for -40°C minimum ambient. U.S. Patent No. D672,492 S. International patent pending.

DesignLights Consortium® (DLC) Premium qualified product and DLC qualified product. Not all versions of this product may be DLC Premium qualified or DLC qualified. Please check the DLC Qualified Products List at www.designlights.org/QPL to confirm which versions are qualified.

International Dark-Sky Association (IDA) Fixture Seal of Approval (FSA) is available for all products on this page utilizing 3000K color temperature only.

WARRANTY

5-year limited warranty. Complete warranty terms located at: www.acuitybrands.com/support/customer-support/terms-and-conditions

Note: Actual performance may differ as a result of end-user environment and application.

All values are design or typical values, measured under laboratory conditions at 25 °C.

Specifications subject to change without notice.



COMMERCIAL OUTDOOR

One Lithonia Way • Conyers, Georgia 30012 • Phone: 1-800-705-SERV (7378) • www.lithonia.com
© 2011-2020 Acuity Brands Lighting, Inc. All rights reserved.

DSX0-LED
Rev. 02/05/20
Page 8 of 8



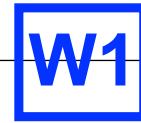
WEDGE1 LED

Architectural Wall Sconce



Catalog Number

Notes

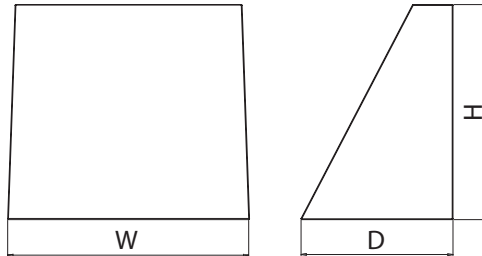


Type

Hit the Tab key or mouse over the page to see all interactive elements.

Specifications

Depth: 5.5"
Height: 8"
Width: 9"
Weight: 9 lbs
 (without options)



Introduction

The WEDGE LED family is designed to meet specifier's every wall-mounted lighting need in a widely accepted shape that blends with any architecture. The clean rectilinear design comes in four sizes with lumen packages ranging from 1,200 to 25,000 lumens, providing true site-wide solution.

WEDGE1 delivers up to 2,000 lumens with a soft, non-pixelated light source, creating a visually comfortable environment. The compact size of WEDGE1, with its integrated emergency battery backup option, makes it an ideal over-the-door wall-mounted lighting solution.

WEDGE LED Family Overview

Luminaire	Standard EM, 0°C	Cold EM, -20°C	Sensor	Lumens (4000K)					
				P1	P2	P3	P4	P5	P6
WEDGE1 LED	4W	--	--	1,200	2,000	--	--	--	--
WEDGE2 LED	10W	18W	Standalone / nLight	1,200	2,000	3,000	4,500	6,000	--
WEDGE3 LED	15W	18W	Standalone / nLight	7,500	8,500	10,000	12,000	--	--
WEDGE4 LED	--	--	Standalone / nLight	12,000	16,000	18,000	20,000	22,000	25,000

Ordering Information

EXAMPLE: WEDGE1 LED P2 40K 80CRI VF MVOLT PE DDBXD

Series	Package	Color Temperature	CRI	Distribution	Voltage	Mounting
WEDGE1 LED	P1 P2	27K 2700K 30K 3000K 35K 3500K 40K 4000K 50K ¹ 5000K	80CRI 90CRI	VF Visual comfort forward throw VW Visual comfort wide	MVOLT 347 ²	Shipped included SRM Surface mounting bracket Shipped separately AWS 3/8inch Architectural wall spacer BBW Surface-mounted back box PBBW Premium surface-mounted back box (top, left, right conduit entry)

Options	Finish
E4WH ³ Emergency battery backup, CEC compliant (4W, 0°C min)	DDBXD Dark bronze
PE ⁴ Photocell, Button Type	DBLXD Black
DS Dual switching (comes with 2 drivers and 2 light engines; see page 3 for details)	DNAXD Natural aluminum
DMG 0-10V dimming wires pulled outside fixture (for use with an external control, ordered separately)	DWHXD White
BCE Bottom conduit entry for premium back box (PBBW). Total of 4 entry points.	DSSXD Sandstone
	DDBTXD Textured dark bronze
	DBLTXD Textured black
	DNATXD Textured natural aluminum
	DWHGXD Textured white
	DSSTXD Textured sandstone

Accessories

Ordered and shipped separately.

WDGEAWS DDBXD U	WEDGE 3/8inch Architectural Wall Spacer (specify finish)
WDGE1PBBW DDBXD U	WEDGE1 Premium surface-mounted back box (specify finish)
WSBBW DDBXD U	Surface - mounted back box (specify finish)

NOTES

- 50K not available in 90CRI.
- 347V not available with E4WH, DS or PE.
- E4WH not available with PE or DS.
- PE not available with DS.



COMMERCIAL OUTDOOR

One Lithonia Way • Conyers, Georgia 30012 • Phone: 1-800-705-SERV (7378) • www.lithonia.com
 © 2019-2020 Acuity Brands Lighting, Inc. All rights reserved.

WEDGE1 LED
 Rev. 01/07/20

Performance Data

Lumen Output

Lumen values are from photometric tests performed in accordance with IESNA LM-79-08. Data is considered to be representative of the configurations shown, within the tolerances allowed by Lighting Facts. Contact factory for performance data on any configurations not shown here.

Performance Package	System Watts	Dist. Type	27K (2700K, 80 CRI)		30K (3000K, 80 CRI)		35K (3500K, 80 CRI)		40K (4000K, 80 CRI)		50K (5000K, 80 CRI)	
			Lumens	LPW	Lumens	LPW	Lumens	LPW	Lumens	LPW	Lumens	LPW
P1	10W	VF	1,120	112	1,161	116	1,194	119	1,227	123	1,235	123
		VW	1,122	112	1,163	116	1,196	120	1,229	123	1,237	124
P2	15W	VF	1,806	120	1,872	125	1,925	128	1,978	132	1,992	133
		VW	1,809	120	1,876	125	1,929	128	1,982	132	1,996	133

Electrical Load

Performance Package	System Watts	Current (A)				
		120V	208V	240V	277V	347V
P1	10W	0.082	0.049	0.043	0.038	--
	13W	--	--	--	--	0.046
P2	15W	0.132	0.081	0.072	0.064	--
	18W	--	--	--	--	0.056

Lumen Multiplier for 90CRI

CCT	Multiplier
27K	0.845
30K	0.867
35K	0.845
40K	0.885
50K	0.898

Lumen Ambient Temperature (LAT) Multipliers

Use these factors to determine relative lumen output for average ambient temperatures from 0-40°C (32-104°F).

Ambient	Lumen Multiplier
0°C / 32°F	1.03
10°C / 50°F	1.02
20°C / 68°F	1.01
25°C / 77°F	1.00
30°C / 86°F	0.99
40°C / 104°F	0.98

Projected LED Lumen Maintenance

Data references the extrapolated performance projections for the platforms noted in a 25°C ambient, based on 10,000 hours of LED testing (tested per IESNA LM-80-08 and projected per IESNA TM-21-11).

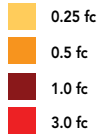
To calculate LLF, use the lumen maintenance factor that corresponds to the desired number of operating hours below. For other lumen maintenance values, contact factory.

Operating Hours	0	25,000	50,000	100,000
Lumen Maintenance Factor	1.0	>0.96	>0.95	>0.91

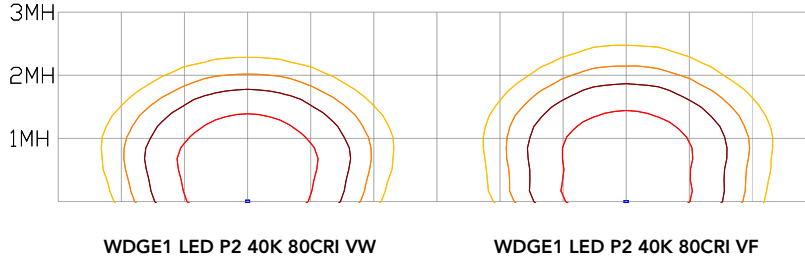
Photometric Diagrams

To see complete photometric reports or download .ies files for this product, visit the Lithonia Lighting WDGE LED homepage. Tested in accordance with IESNA LM-79 and LM-80 standards.

LEGEND



MH = 8ft
Grid = 8ft x 8ft



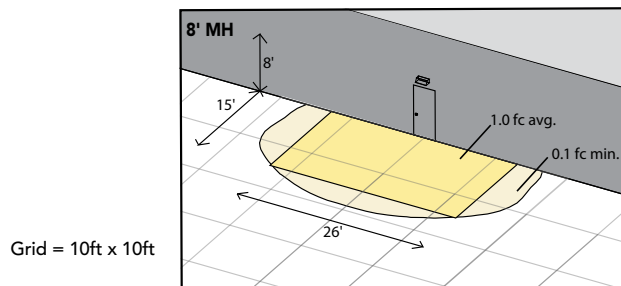
Emergency Egress Options

Emergency Battery Backup

The emergency battery backup is integral to the luminaire — no external housing required! This design provides reliable emergency operation while maintaining the aesthetics of the product. All emergency battery backup configurations include an independent secondary driver with an integral relay to immediately detect loss of normal power and automatically energize the luminaire. The emergency battery will power the luminaire for a minimum duration of 90 minutes (maximum duration of three hours) from the time normal power is lost and maintain a minimum of 60% of the light output at the end of 90 minutes.

Applicable codes: NFPA 70/NEC – section 700.16, NFPA 101 Life Safety Code Section 7.9

The example below shows illuminance of 1 fc average and 0.1 fc minimum in emergency mode with E4WH and VF distribution.

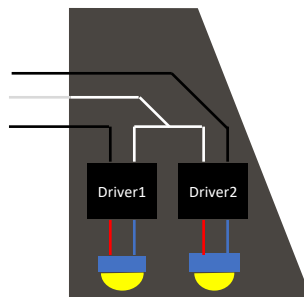


WDGE1 LED xx 40K 80CRI VF MVOLT E4WH

Dual Switching (DS) Option

The dual switching option offers operational redundancy that certain codes require. With this option the luminaire comes integrated with two drivers and two light engines. These work completely independent to each other so that a failure of any individual component does not cause the whole luminaire to go dark. This option is typically used with a back generator or inverter providing emergency power.

Applicable codes: NFPA 70/NEC – section 700.16, NFPA 101 Life Safety Code Section 7.9





E4WH – 4W Emergency Battery Backup

D = 5.5"

H = 8"

W = 9"

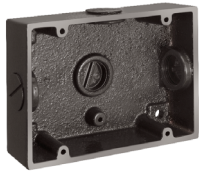


PBBW – Premium Back Box

D = 1.75"

H = 8"

W = 9"



BBW – Standard Back Box

D = 1.5"

H = 4"

W = 5.5"



AWS – 3/8inch Architectural Wall Spacer

D = 0.38"

H = 4.4"

W = 7.5"

FEATURES & SPECIFICATIONS

INTENDED USE

Common architectural look, with clean rectilinear shape, of the WDGE LED was designed to blend with any type of construction, whether it be tilt-up, frame or brick. Applications include commercial offices, warehouses, hospitals, schools, malls, restaurants, and other commercial buildings.

CONSTRUCTION

The single-piece die-cast aluminum housing integrates secondary heat sinks to optimize thermal transfer from the internal light engine heat sinks and promote long life. The driver is mounted in direct contact with the casting for a low operating temperature and long life. The die-cast door frame is fully gasketed with a one-piece solid silicone gasket to keep out moisture and dust, providing an IP66 rating for the luminaire.

FINISH

Exterior painted parts are protected by a zinc-infused Super Durable TGIC thermoset powder coat finish that provides superior resistance to corrosion and weathering. A tightly controlled multi-stage process ensures a 3 mils thickness for a finish that can withstand extreme climate changes without cracking or peeling. Standard Super Durable colors include dark bronze, black, natural aluminum, sandstone and white. Available in textured and non-textured finishes.

OPTICS

Well crafted reflector optics allow the light engine to be recessed within the luminaire, providing visual comfort, superior distribution, uniformity, and spacing in wall-mount applications. The WDGE LED has zero uplight and qualifies as a Nighttime Friendly™ product, meaning it is consistent with the LEED® and Green Globes™ criteria for eliminating wasteful uplight.

ELECTRICAL

Light engine consists of high-efficiency LEDs mounted to metal-core circuit boards to maximize heat dissipation and promote long life (up to L91/100,000 hours at 25°C). The electronic driver has a power factor of >90%, THD <20%. Luminaire comes with built in 6kV surge protection, which meets a minimum Category C low exposure (per ANSI/IEEE C62.41.2).

INSTALLATION

A universal mounting plate with integral mounting support arms allows the fixture to hinge down for easy access while making wiring connections. The 3/8" Architectural Wall Spacer (AWS) can be used to create a floating appearance or to accommodate small imperfections in the wall surface.

LISTINGS

CSA certified to U.S. and Canadian standards. Luminaire is IP66 rated. PIR options are rated for wet location. Rated for -40°C minimum ambient. DesignLights Consortium® (DLC) Premium qualified product and DLC qualified product. Not all versions of this product may be DLC Premium qualified or DLC qualified. Please check the DLC Qualified Products List at www.designlights.org/QPL to confirm which versions are qualified.

WARRANTY

5-year limited warranty. Complete warranty terms located at: www.acuitybrands.com/support/customer-support/terms-and-conditions

Note: Actual performance may differ as a result of end-user environment and application. All values are design or typical values, measured under laboratory conditions at 25 °C. Specifications subject to change without notice.

Model No :: **20050LEDDMG-BL**
 Name :: **Edge**



Project Name :: _____
 Location :: _____
 Type :: _____
 Quantity :: _____
 Notes :: _____

Product Information

Product ID :: 20050
 UPC Code :: 641594230116
 Mounting Type :: Wall
 Finish :: Black (BL)
 Diffuser :: N/A
 Alt. Finishes :: Satin (SAT)
 Alt. Diffusers :: N/A

Product Dimensions

Fixture		Canopy	
Length ::	N/A	Length ::	N/A
Width ::	5.5"	Width ::	N/A
Diameter ::	N/A	Diameter ::	N/A
Extension ::	3.9"	Height ::	N/A
Height ::	7.1"		
Overall Height ::	N/A Max.		



Technical Specifications

Qualifications

Location Rating :: Wet
 Certification :: cETLus
 IES File :: No
 JA8 Compliant :: No
 Title 20 Compliant :: N/A
 Energy Star :: No
 ADA Compliant :: Yes
 Marine Grade :: Yes
 Emergency Lighting :: No
 Warranty :: 5 Year Limited

Specifications

Frame Material :: Metal
 Diffuser Material :: Glass
 Voltage :: 120v
 Lamping Type :: Dedicated LED
 Lamping Base :: SSL
 Lamp Quantity :: 1
 Lamp Wattage :: 13 W
 Total Wattage :: 13 W
 Lamps Included :: Yes
 J-Box Type :: Standard

Photometrics

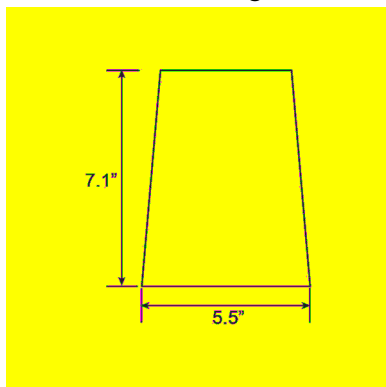
CCT :: 3000
 CRI :: 90
 Wattage :: 13 W
 Nominal Lumens :: 1293
 Delivered Lumens :: N/A

Recommended Dimmers

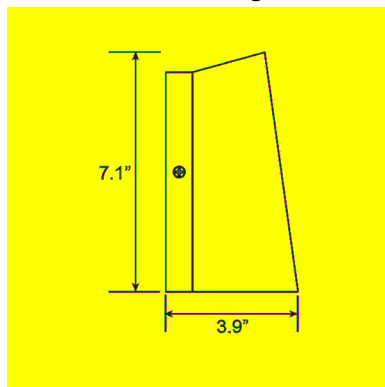
(ELV) LUTRON Diva DVELV-303P; (ELV) LUTRON Maestro MAELV-600; (ELV) LUTRON Skylark SELV-300P; (TRIAC) LEVITON Decora Sureslide 6672; (TRIAC) LEVITON Decora Sureslide 6674; (TRIAC) LUTRON Diva DVCL-153P; (TRIAC) LUTRON Skylark CL

Custom Options :: N/A; Additional Items :: N/A

Line Drawing #1



Line Drawing #2



IES File

Image Not Available

Toll Free 800-828-5483 or www.AccessLighting.com

14410 Myford Road, Irvine, CA 92606

The information provided is subject to change without notice. ©2018 Access Lighting Corporation. All Rights Reserved
 Rev. 201902 Filename:: 20050LEDDMG-BL.pdf



