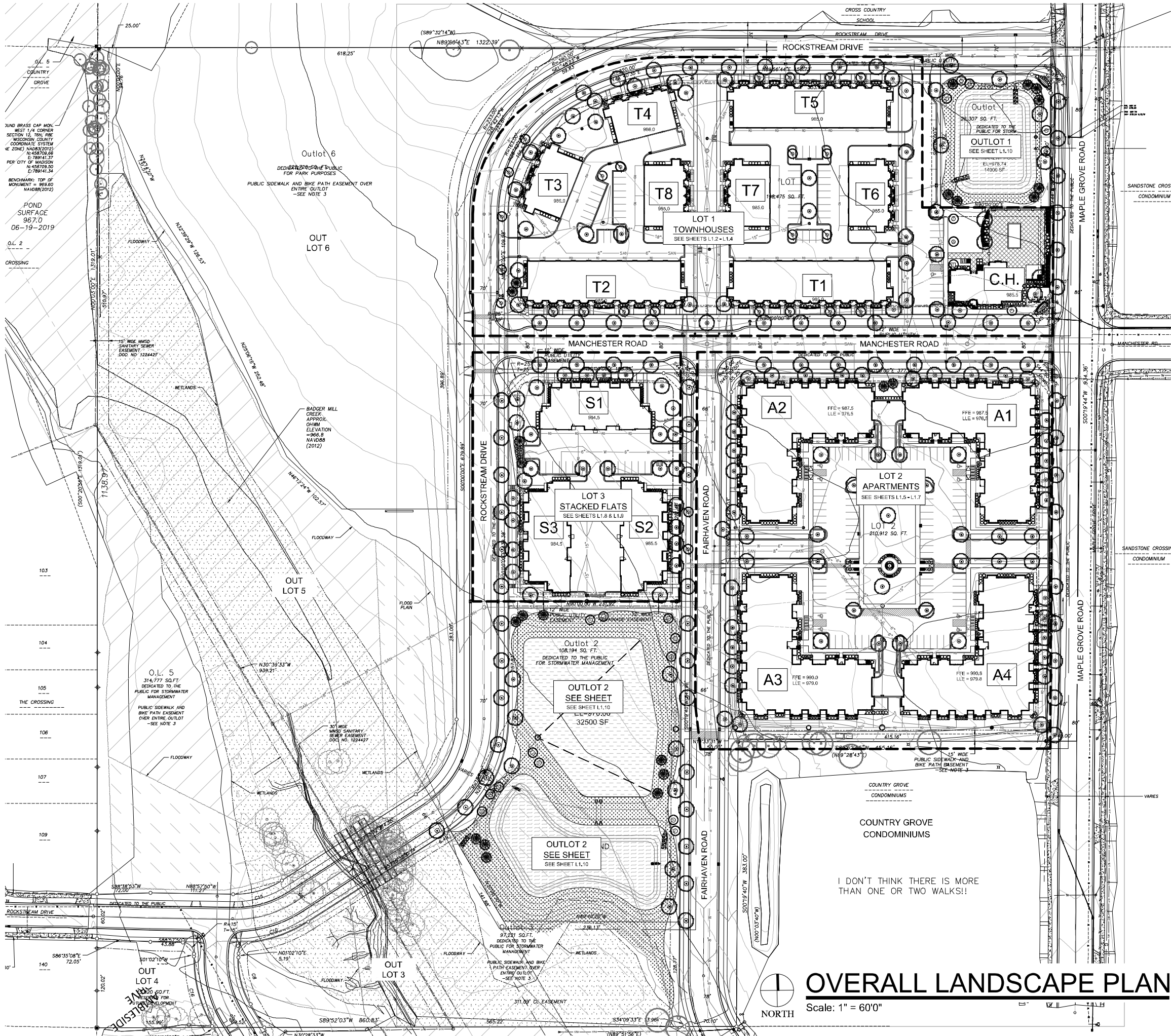




TO OBTAIN LOCATIONS OF PARTICIPANTS UNDERGROUND FACILITIES BEFORE YOU DIG IN WISCONSIN
CALL DIGGERS HOTLINE
811 or 1-800-242-8311
MILWAUKEE AREA 258-1181
WIS. STATUTE 182.0175(1974)
REQUIRES MIN. 3 WORK DAYS NOTICE BEFORE YOU EXCAVATE



HELLER &
ASSOCIATES, LLC
LANDSCAPE ARCHITECTURE
P.O. Box 1359
Lake Geneva, Wisconsin 53147-1359
ph 262.639.9733
david@wdavidheller.com
www.wdavidheller.com

PROJECT
**MAPLE GROVE
MULTI-FAMILY**

Maple Grove Road at
Manchester Road
Madison, WI

ISSUANCE AND REVISIONS	
DATE	DESCRIPTION
12.13.19	ISSUE TO OWNER
12.17.19	SUBMITTAL
2.28.20	REVISED SITE PLAN

Information contained herein is based on survey information, field inspection, and believed to be accurate.

SHEET TITLE
**OVERALL
LANDSCAPE
PLAN**

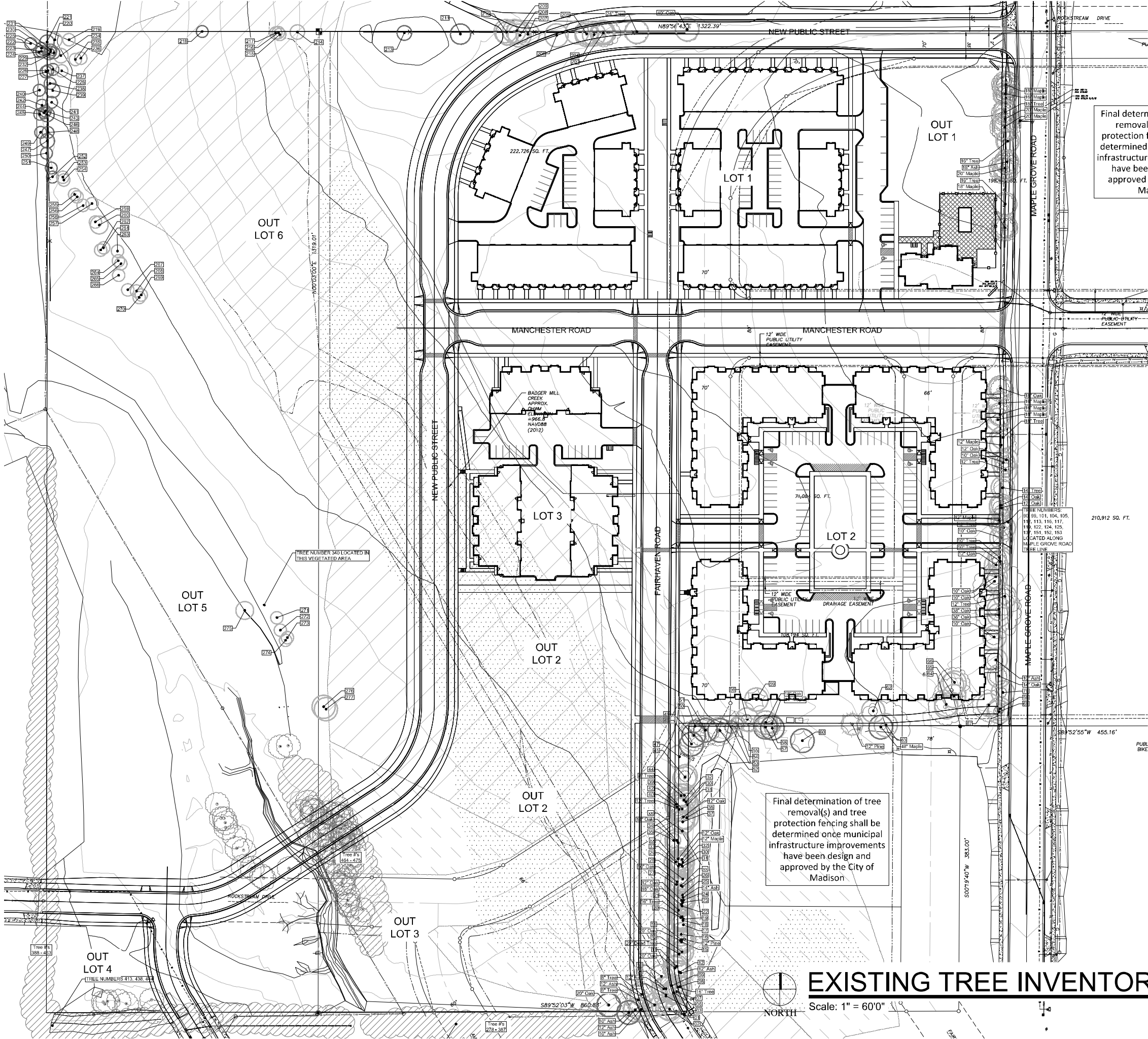
PROJECT MANAGER	WDH
PROJECT NUMBER	19-090
DATE	2.28.2020
SHEET NUMBER	

L 1.0



TO OBTAIN LOCATIONS OF
PARTICIPANTS' UNDERGROUND
FACILITIES BEFORE YOU
DIG IN WISCONSIN

CALL DIGGERS HOTLINE
811 or 1-800-242-8311
MILWAUKEE AREA 259-1181
WIS. STATUTE 182.0175(1974)
REQUIRES MIN. 3 WORK DAYS
NOTICE BEFORE YOU EXCAVATE



HELLER &
ASSOCIATES, LLC
LANDSCAPE ARCHITECTURE
P.O. Box 1359
Lake Geneva, Wisconsin 53147-1359
ph 262.639.9733
david@davidheller.com
www.davidheller.com

PROJECT
MAPLE GROVE
MULTI-FAMILY

Maple Grove Road at
Manchester Road
Madison, WI

ISSUANCE AND REVISIONS	
DATE	DESCRIPTION
12.13.19	ISSUE TO OWNER
12.17.19	SUBMITTAL
2.28.20	REVISED SITE PLAN

Information contained herein is based on survey information, field
inspection, and believed to be accurate.

SHEET TITLE
OVERALL
EXISTING
TREE
INVENTORY

PROJECT MANAGER	WDH
PROJECT NUMBER	19-090
DATE	2.28.20
SHEET NUMBER	

L 1.1



DA	Deutschland Astile (White)
HRD	Happy Returns Daylily
RRD	Rosy Returns Daylily
MRCB	Midnight Rose Coralbells
PPCB	Palace Purple Coralbells
FH	Francee Hosta
CBSI	Caesars' Brother Siberian Iris
KKC	Dwarf Catmint
BES	Black-eyed Susan

Type	Min. Size	Points
Shade Tree	2.5" DEH	35
Evergreen Tree	5-6' Tall	35
Ornamental Tree	1.5" Cal.	15
Upright EG Shrub	3-4' Tall	10
Deciduous Shrub	12-24" (#3)	3
Evergreen Shrub	12-24" (#3)	4
Grass/Perennial	8-18" (#1)	2
Total Landscape Points Provided		



Scale: 1" = 30'0"

SHEET NUMBER _____

L 1.2

ISSUANCE AND REVISIONS	
DATE	DESCRIPTION
12.13.19	ISSUE TO OWNER
12.17.19	SUBMITTAL
2.28.20	REVISED SITE PLAN

ISSUANCE AND REVISIONS

DATE	DESCRIPTION
------	-------------

DATE	DESCRIPTION
12 13 19	ISSUE TO OWNER

12.17.19 SUBMITTAL

2.28.20 REVISED SITE PLAN

Information contained herein is based on survey information, field inspection, and believed to be accurate.

SHEET TITLE

OVERALL I

OVERALL

LANDSCAPE

PLAN LOT 1

PLAN: LOT 1

PROJECT MANAGER WDH

PROJECT NUMBER 19-090

DATE 2.28.20

CLUSTER NUMBER

SHEET NUMBER _____

112

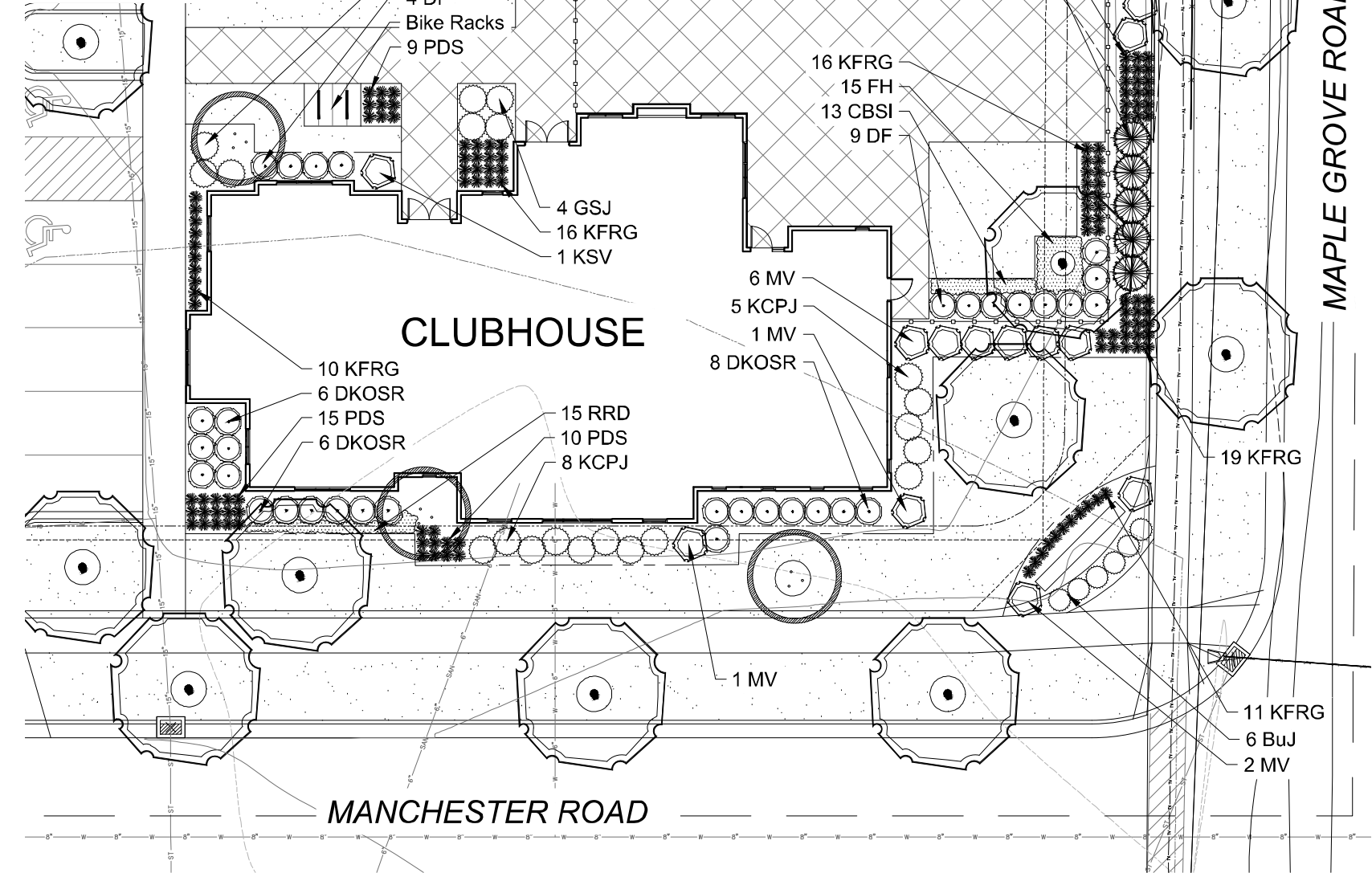
L1.2

- EVERGREEN SHRUBS**
- GVB Green Velvet Boxwood
 - KCPI Kallay Compact Pfitzer Juniper
 - GSI Green Sargent Juniper
 - TIY Taunton Intermediate Yew
- DECIDUOUS SHRUBS**
- CRD Cardinal Redtwig Dogwood
 - HC Peking (Hedge) Cotoneaster
 - DF Dwarf Fothergilla
 - IH Incrediball Hydrangea
 - UH Unique Hydrangea
 - DKOSR Double Pink Knock Out Rose
 - PPSR Pink Pavement Series Rose
 - MKL Miss Kim Dwarf Lilac
 - KSV Fragrant Koreanspice Viburnum
 - MV Mohican Viburnum
 - WRW Wine & Rosas Compact Wiegela

- ORNAMENTAL GRASSES**
- KFRG Karl Foerster Feather Reed Grass
 - PDS Prairie Dropseed

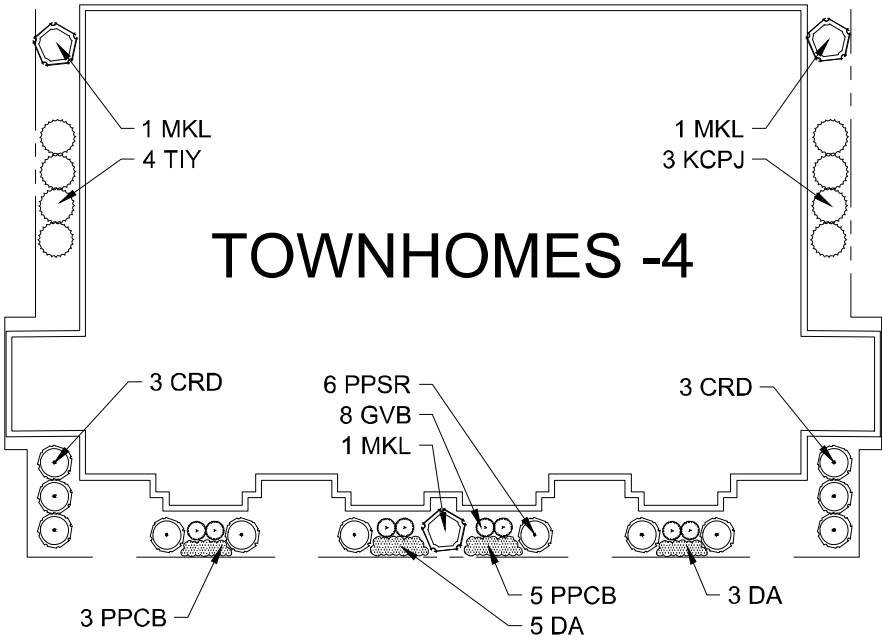
- PLANT ABBREVIATIONS**
- DA Deutschland Astible (White)
 - HRD Happy Returns Daylilly
 - RDR Rosy Returns Daylilly
 - MRCB Midnight Rose Coralbells
 - PPCB Palace Purple Coralbells
 - FH Francee Hosta
 - CBSI Caesars' Brother Siberian Iris
 - KKC Dwarf Catmint
 - BES Black-eyed Susan

PLANT ABBREVIATIONS



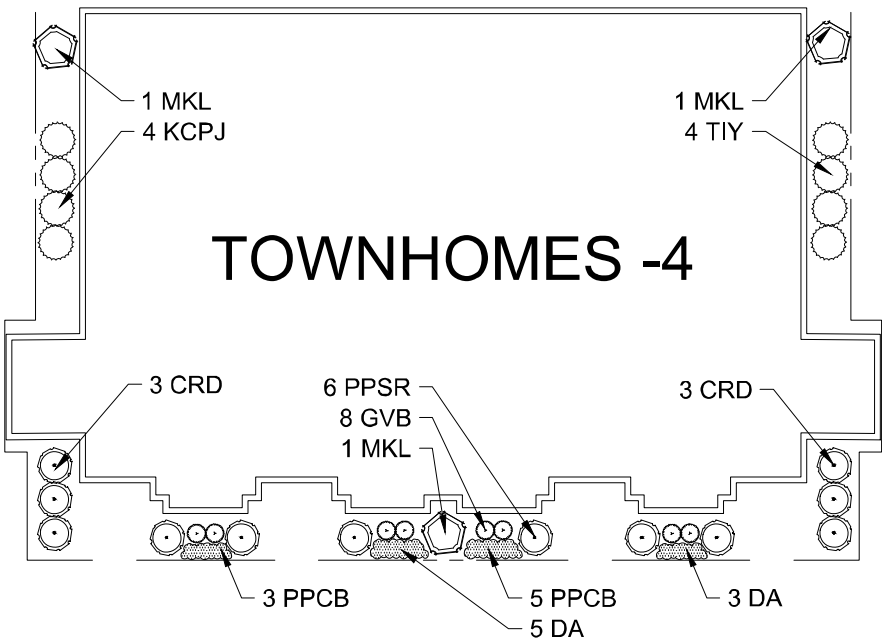
FOUNDATION LANDSCAPE PLAN - CLUBHOUSE

Scale: 1" = 10'0"



FOUNDATION LANDSCAPE PLAN - OPTION "A"

Scale: 1" = 10'0"



FOUNDATION LANDSCAPE PLAN - OPTION "B"

Scale: 1" = 10'0"

HELLER & ASSOCIATES, LLC
LANDSCAPE ARCHITECTURE
P.O. Box 1359
Lake Geneva, Wisconsin 53147-1359
ph 262.639.9733
david@wdavidheller.com
www.wdavidheller.com

PROJECT
MAPLE GROVE MULTI-FAMILY

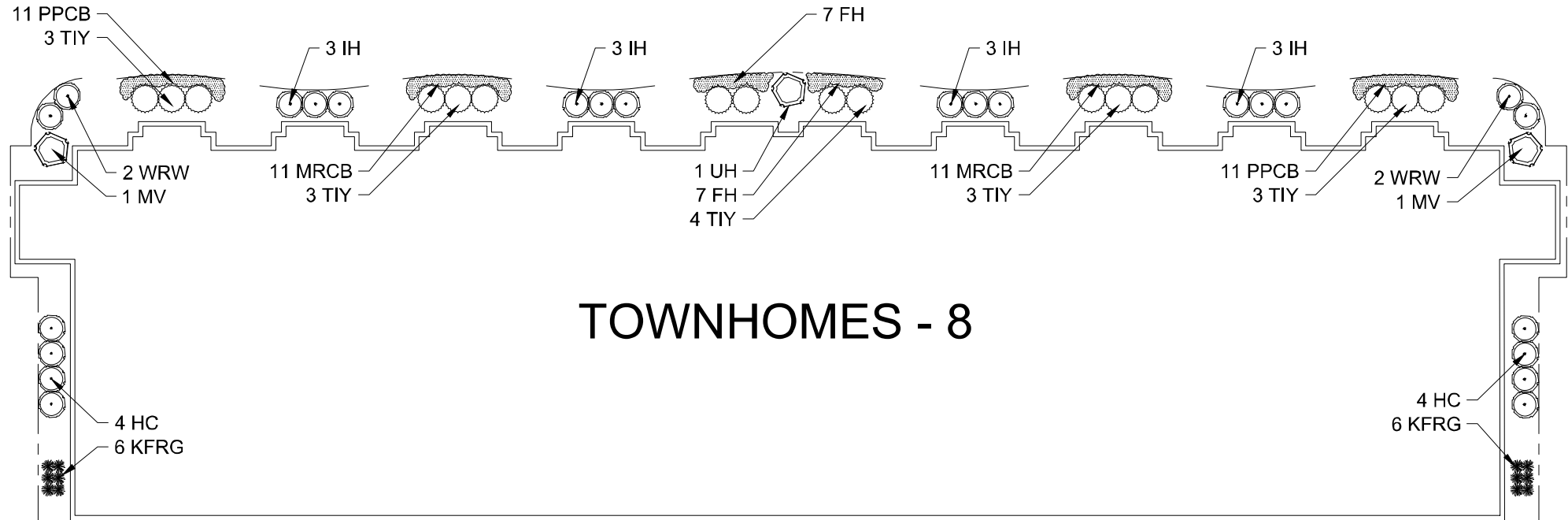
Maple Grove Road at
Manchester Road
Madison, WI

ISSUANCE AND REVISIONS	
DATE	DESCRIPTION
12.13.19	ISSUE TO OWNER
12.17.19	SUBMITTAL
2.28.20	REVISED SITE PLAN

Information contained herein is based on survey information, field inspection, and believed to be accurate.

SHEET TITLE
FOUNDATION LANDSCAPE PLANS : CLUBHOUSE & TOWNHOUSE

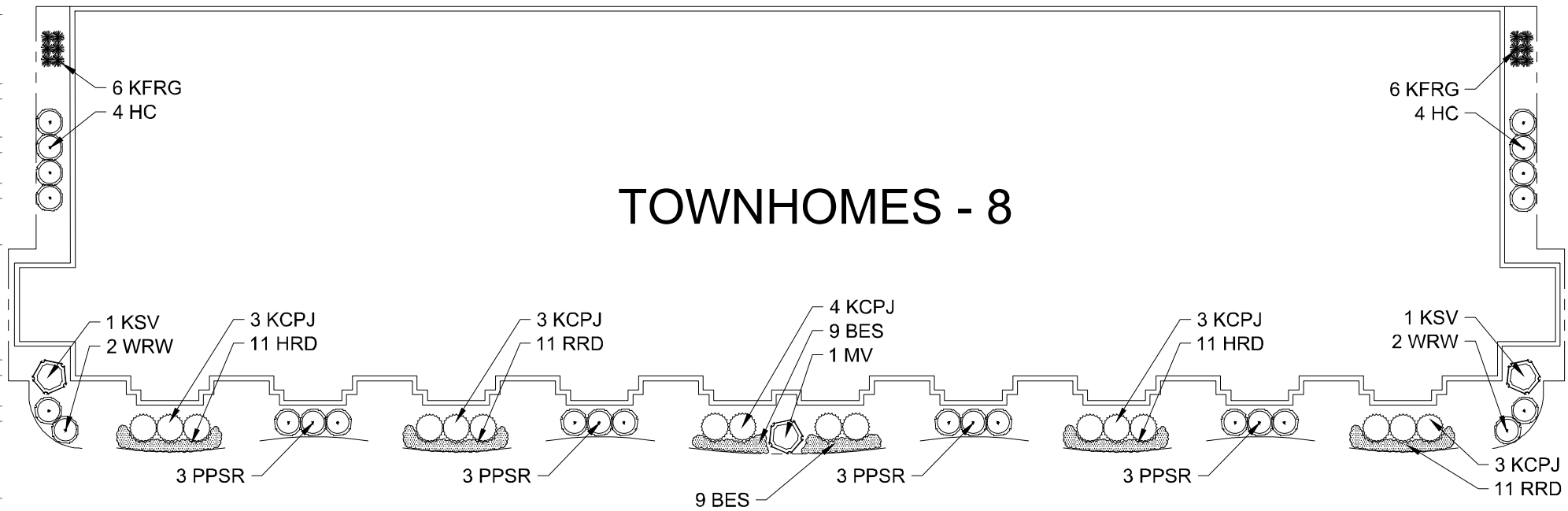
PROJECT MANAGER	WDH
PROJECT NUMBER	19-090
DATE	2.28.20
SHEET NUMBER	



 **FOUNDATION LANDSCAPE PLAN -OPTION "C"**
Scale: 1" = 10'0"

[illegible][illegible]

PLANT & MATERIAL SCHEDULE: LOT 1



 **FOUNDATION LANDSCAPE PLAN -OPTION "D"**
Scale: 1" = 10'0"

ISSUANCE AND REVISIONS	
DATE	DESCRIPTION
12.13.19	ISSUE TO OWNER
12.17.19	SUBMITTAL
2.28.20	REVISED SITE PLAN

Information contained herein is based on survey information, field inspection, and believed to be accurate.

SHEET TITLE

ENLARGED
LANDSCAPE
FOUNDATION
PLANS: LOT 1

PROJECT MANAGER	WDH
PROJECT NUMBER	19-090
DATE	2.28.20
SHEET NUMBER	

L 1.4

Landscape Materials			
111	Shredded Hardwood Mulch (3" depth)	<i>±/- 12,000 of Bed Area</i>	CY Bulk Mulch; apply Preemergent after installation of mulch
74	Soil Amendments (2" depth)	<i>±/- 12,000 of Bed Area</i>	CY
186	Pulverized Topsoil (Lawn Area)	<i>±/- 60,000 SF of Seeded</i>	CY
74	Pulverized Topsoil (2" over bed areas)	<i>±/- 12,000 of Bed Area</i>	CY

*Landscape counts/quantities are provided as a service to the Landscape Contractor. Landscape Contractor is responsible for verifying these counts and quantities in order to provide a complete Landscape installation as outlined on the Landscape Master Plan. In the event that a discrepancy occurs between this schedule and the Landscape Master Plan, the Landscape MasterPlan including the graphics and notations depicted therein shall govern.

cape Calculations
landscape points per 300 SF of total developed area

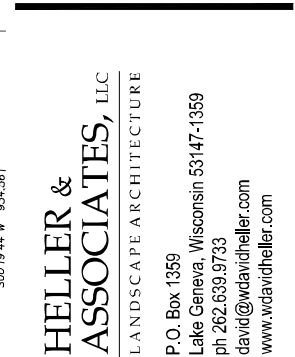
Required Landscape Points:	2,184 Points	Located between the buildings or parking lot and the adjacent street
Existing Plant Credits		1 shade tree & 5 shrubs for every 30 linear feet 2 ornamental or evergreen trees may be used to replace 1 shade tree

Proposed Landscape Points				Interior Parking Lot Landscaping	
Type	Min. Size	Points	Quantity	Points	8% of parking area shall be devoted to interior landscape area
Shade Tree	2.5" DBH	35	56	1,960	One (1) shade tree for every 160 SF of interior landscape area
Evergreen Tree	5'-6" Tall	35	2	70	2 ornamental trees may be used to replace 1 shade tree, max 25%
Ornamental Tree	1.5" Cal.	15	1	15	Area of Parking Area:
Upright EG Shrub	3'-4" Tall	10	0	0	Required Landscape Area:
Deciduous Shrub	12-24" (#3)	3	219	657	Landscape Area Shown:
Evergreen Shrub	12-24" (#3)	4	156	624	
Grass/Perennial	8-18" (#1)	2	566	1,132	Required Number of Trees:
Total Landscape Points Provided				4,458	Number of Trees Shown:
					17.6 Trees
					18 Trees

TO OBTAIN LOCATIONS OF
PARTICIPANTS UNDERGROUND
FACILITIES BEFORE YOU
DIG IN WISCONSIN

DIGGERS  HOTLINE

CALL DIGGERS HOTLINE
811 or 1-800-242-8511
MILWA. AREA 259-1181
WS. STATUTE 182.0175(1974)
REQUIRES MIN. 3 WORK DAYS
NOTICE BEFORE YOU EXCAVATE



Maple Grove Road at
Manchester Road
Madison, WI

Information contained herein is based on survey information, field inspection, and believed to be accurate.

PROJECT MANAGER	WDH
PROJECT NUMBER	19-090
DATE	2.28.20
SHEET NUMBER	

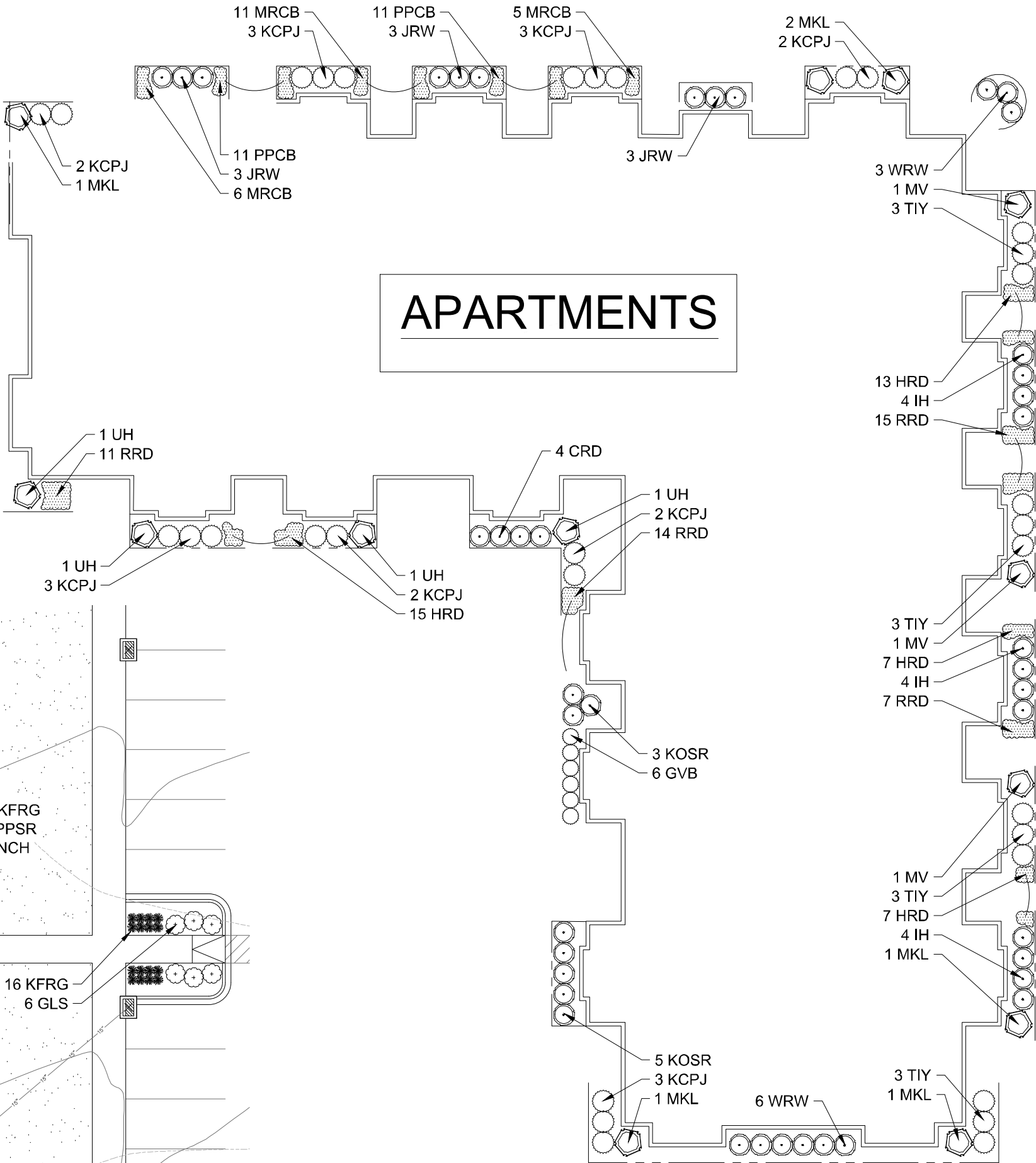
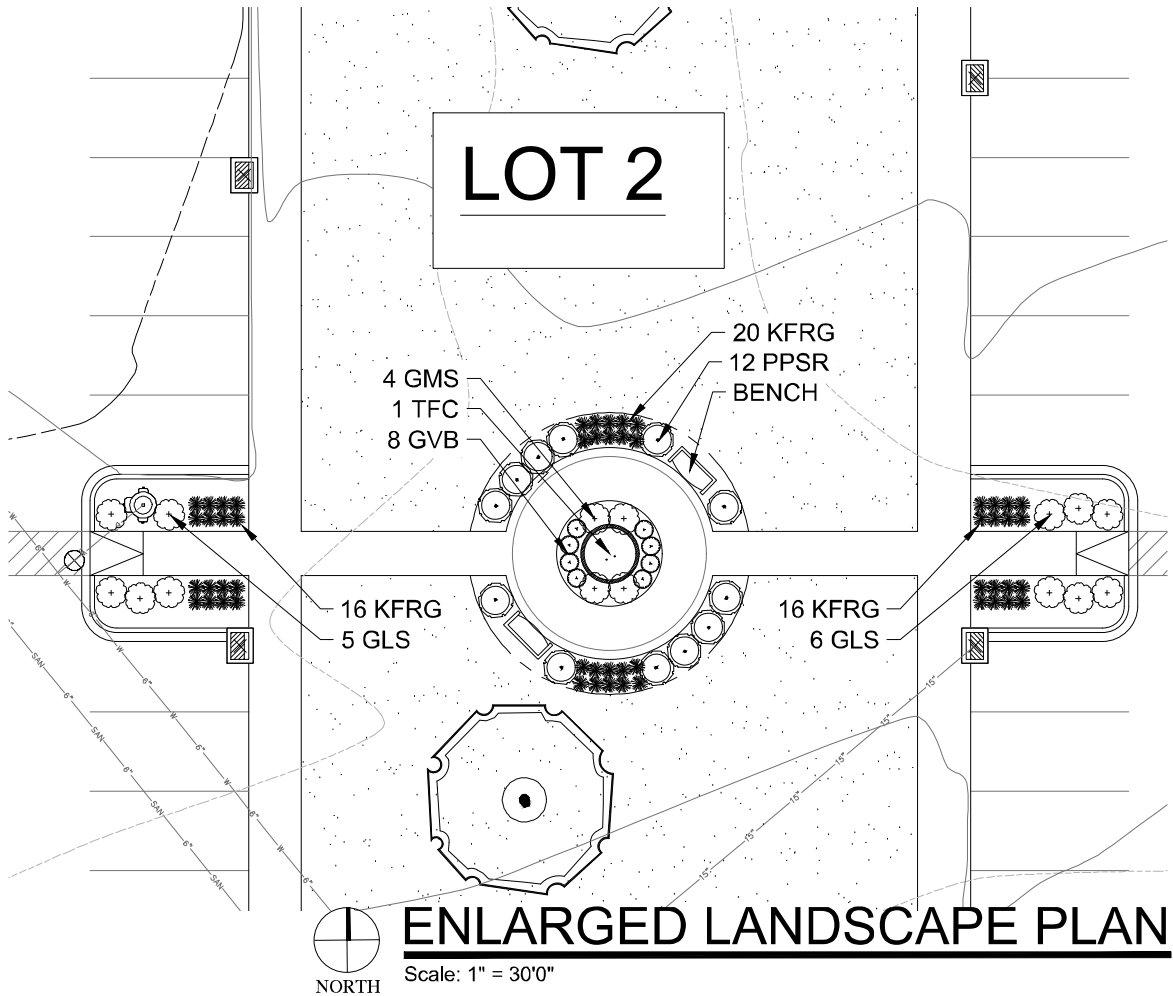
L 1.5



- DECIDUOUS SHRUBS**
- CRD Cardinal Redtwig Dogwood
 - IH Incredibleball Hydrangea
 - UH Unique Hydrangea
 - GLS Gro Low Fragrant Sumac
 - KOSR Knock Out Shrub Rose
 - PPSR Pink Pavement Series Rose
 - AWS Anthony Waterer Spirea
 - GMS Goldmound Spirea
 - MKL Miss Kim Dwarf Lilac
 - MV Mohican Viburnum
 - JRW Java Red Wiegela
 - WRW Wine & Roses Compact Wiegela

- ORNAMENTAL GRASSES**
- KFRG Karl Foerster Feather Reed Grass

- HERBACEOUS PERENNIALS**
- HRD Happy Returns Daylily
 - RRD Rosy Returns Daylily
 - MRCB Midnight Rose Coralbells
 - PPCB Palace Purple Coralbells
- PLANT ABBREVIATIONS**



FOUNDATION LANDSCAPE PLAN - OPTION "A"
Scale: 1" = 10'0"

HELLER & ASSOCIATES, LLC
LANDSCAPE ARCHITECTURE

P.O. Box 1359
Lake Geneva, Wisconsin 53147-1359
ph 262.639.9733
david@wdavidheller.com
www.wdavidheller.com

PROJECT

MAPLE GROVE MULTI-FAMILY

Maple Grove Road at
Manchester Road
Madison, WI

ISSUANCE AND REVISIONS

DATE	DESCRIPTION
12.13.19	ISSUE TO OWNER
12.17.19	SUBMITTAL
2.28.20	REVISED SITE PLAN

Information contained herein is based on survey information, field inspection, and believed to be accurate.

SHEET TITLE

ENLARGED APARTMENT FOUNDATION LANDSCAPE PLAN: OPTION "A"

PROJECT MANAGER	WDH
PROJECT NUMBER	19-090
DATE	2.28.20
SHEET NUMBER	

PLANT KEY	QUANTITY	PLANT MATERIAL PROPOSED		CA, JPER or HEIGHT	ROOT	SPECIFICATION / NOTES		PLANT SPACING
Proposed Street Trees								
	29	Shade Trees				The City of Madison shall define the final locations, sizes & species of proposed street trees located in the City right-of-way		
	2	Ornamental Trees						
PLANT KEY	QUANTITY	PLANT MATERIAL PROPOSED		CA, JPER or HEIGHT	ROOT	SPECIFICATION / NOTES		PLANT SPACING
Proposed Landscape Materials								
SHADE TREES (DECIDUOUS)								
ARM	4	Acer xfreemantii 'Armstrong'	Armstrong Red Maple	2.5"	E&B	Straight central leader, full and even crown. Prune only after planting		
GMCM	6	Acer saccharum 'Green Mountain'	Green Mountain Sugar Maple	2.5"	E&B	Straight central leader, full and even crown. Prune only after planting		
PPH	6	Celtis occidentalis 'Prairie Pride'	Prairie Pride Hackberry	2.5"	E&B	Straight central leader, full and even crown. Prune only after planting		
ACM	5	Eringio biloba 'Autumn Gold'	Autumn Gold Maidenhair	2.5"	E&B	Straight central leader, full and even crown. Prune only after planting		
GSL	7	Tilia cordata 'Greenspire'	Greenspire Linden	2.5"	E&B	Straight central leader, full and even crown. Prune only after planting		
PLANT KEY	QUANTITY	PLANT MATERIAL PROPOSED		HEIGHT SIZE	ROOT	SPECIFICATION / NOTES		PLANT SPACING
EVERGREEN TREES								
BHS	2	Picea glauca 'densata'	Black Hills Spruce	8' H	E&B	Evenly shaped tree with branching to the ground		15'
PLANT KEY	QUANTITY	PLANT MATERIAL PROPOSED		SHRUB SIZE(HEIGHT)	ROOT/ CONT.	SPECIFICATION / NOTES		PLANT SPACING
EVERGREEN SHRUBS								
KCPJ	40	Juniperus chinensis 'Kallay'	Kallay Compact Pfitzer Juniper	24" w	Cont.	Full rounded well branched shrub		48"
TYJ	20	Taxus xmedia 'Taunton'	Taunton Intermediate Yew	24" w	E&B	Full rounded well branched shrub		42"
PLANT KEY	QUANTITY	PLANT MATERIAL PROPOSED		SHRUB SIZE(HEIGHT)	ROOT/ CONT.	SPECIFICATION / NOTES		PLANT SPACING
DECIDUOUS SHRUBS								
IH	6	Hydrangea arborescens 'Abetwo'	Incrediball Hydrangea	45"	Cont.	Full, well rooted plant, evenly shaped		48"
UH	4	Hydrangea paniculata 'Unique'	Unique Hydrangea	48"	Cont.	Full, well rooted plant, evenly shaped		60"
SJW	0	Hypericum kalmianum	St. Johnswort	24"	Cont.	Full, well rooted plant, evenly shaped		36"
PPSR	12	Rosa rugosa 'Pink Pavement'	Pink Pavement Series Rose	18"	Cont.	Full, well rooted plant, evenly shaped		42"
AWS	16	Spiraea vibemoida 'Anthony Waterer'	Anthony Waterer Spirea	24"	Cont.	Full, well rooted plant, evenly shaped		36"
GMVS	30	Spiraea vibemoida 'Goldmound'	Goldmound Spirea	24"	Cont.	Full, well rooted plant, evenly shaped		36"
MKL	0	Syringa patula 'Miss Kim'	Miss Kim Dwarf Lilac	36"	Cont.	Full, well rooted plant, evenly shaped		60"
KSV	12	Viburnum carlesii	Fragrant Koreanopple Viburnum	36"	Cont.	Full, well rooted plant, evenly shaped		60"
MV	8	Viburnum lantana 'Mohican'	Mohican Viburnum	48"	E&B	Full, well rounded plant with moist rootball and healthy appearance		60"
WRW	0	Wiegela florida 'Wine & Roses'	Wine & Roses Compact Wiegela	24"	Cont.	Full, well rooted plant, evenly shaped		42"
PLANT KEY	QUANTITY	PLANT MATERIAL PROPOSED		CONTAINER SIZE		SPECIFICATION / NOTES		PLANT SPACING
ORNAMENTAL GRASSES								
KFRG	36	Calamagrostis acutiflora 'Kar Foerster'	Karl Foerster Feather Reed Grass	#1	Cont.	Full, well rooted plant		15-18"
PDS	48	Sporobolus heterolepis	Prairie Dropseed	#1	Cont.	Full, well rooted plant		36"
PLANT KEY	QUANTITY	PLANT MATERIAL PROPOSED		CONTAINER SIZE		SPECIFICATION / NOTES		PLANT SPACING
LAWN								
	27800	Lawn Establishment Area / Grading Area			SF	Reinder's Deluxe 50 Seed Mix (800-785-3301)		
	27800	Erosion Matting for sloped seeded areas			SF	BioTex D575 Erosion Control Blanket (or approved equal)		
Hardscape Materials								
46		Shredded Hardwood Mulch (3" depth)	+/- 4,950 SF of Bed Area		CY	Birk Mulch; apply Pre-emergent after installation of mulch		
30		Soil Amendments (2" depth)	+/- 4,950 SF of Bed Area		CY			
86		Pulverized Topsoil (Lawn Area)	+/- 27,800 SF of Seeded Area		CY			
30		Pulverized Topsoil (2" over bed areas)	+/- 4,950 SF of Bed Area		CY			

PLANT & MATERIAL SCHEDULE: LOT 3

Site Landscape Calculations:

Five (5) landscape points per 300 SF of total developed area

	LOT 3
Gross Area of Lot:	71,092 SF 1.6 Acres
Less Building Footprints (at grade):	(22,692) SF
Less Structure (pool deck):	- SF
Less designated Open Space:	- SF
Less Undeveloped Area:	- SF
Total Developed Area:	48,400 SF

Required Landscape Points: 807 Points

Existing Plant Credits

Type	Min. Size	Points	Quantity	Points
Shade Tree	2.5" DBH	35		0
Evergreen Tree	5-6' Tall	35		0
Ornamental Tree	1.5" Cal.	15		0
Specimen Tree		14/inch		
Total Existing Credits				0

Proposed Landscape Points

Type	Min. Size	Points	Quantity	Points
Shade Tree	2.5' DBH	35	28	980
Evergreen Tree	5-6' Tall	35	2	70
Ornamental Tree	1.5' Cal.	15	0	0
Upright EG Shrub	3-4' Tall	10	0	0
Deciduous Shrub	12-24" (#3)	3	88	264
Evergreen Shrub	12-24" (#3)	4	60	240
Grass/Perennial	8-38" (#1)	2	84	168
Total Landscape Points Provided				1,722

Development Frontage Landscaping

Located between the buildings or parking lot and the adjacent street

1 shade tree & 5 shrubs for every 30 linear feet

2 ornamental or evergreen trees may be used to replace 1 shade tree

LOT 3

Length of Frontage:	785 LF
Required Number of Trees:	26.2 Trees
Number of Trees Shown:	26 Trees
Required Number of Shrubs:	130.9 Shrubs
Number of Shrubs Shown:	126 Shrubs

Interior Parking Lot Landscaping

8% of parking area shall be devoted to interior landscape area

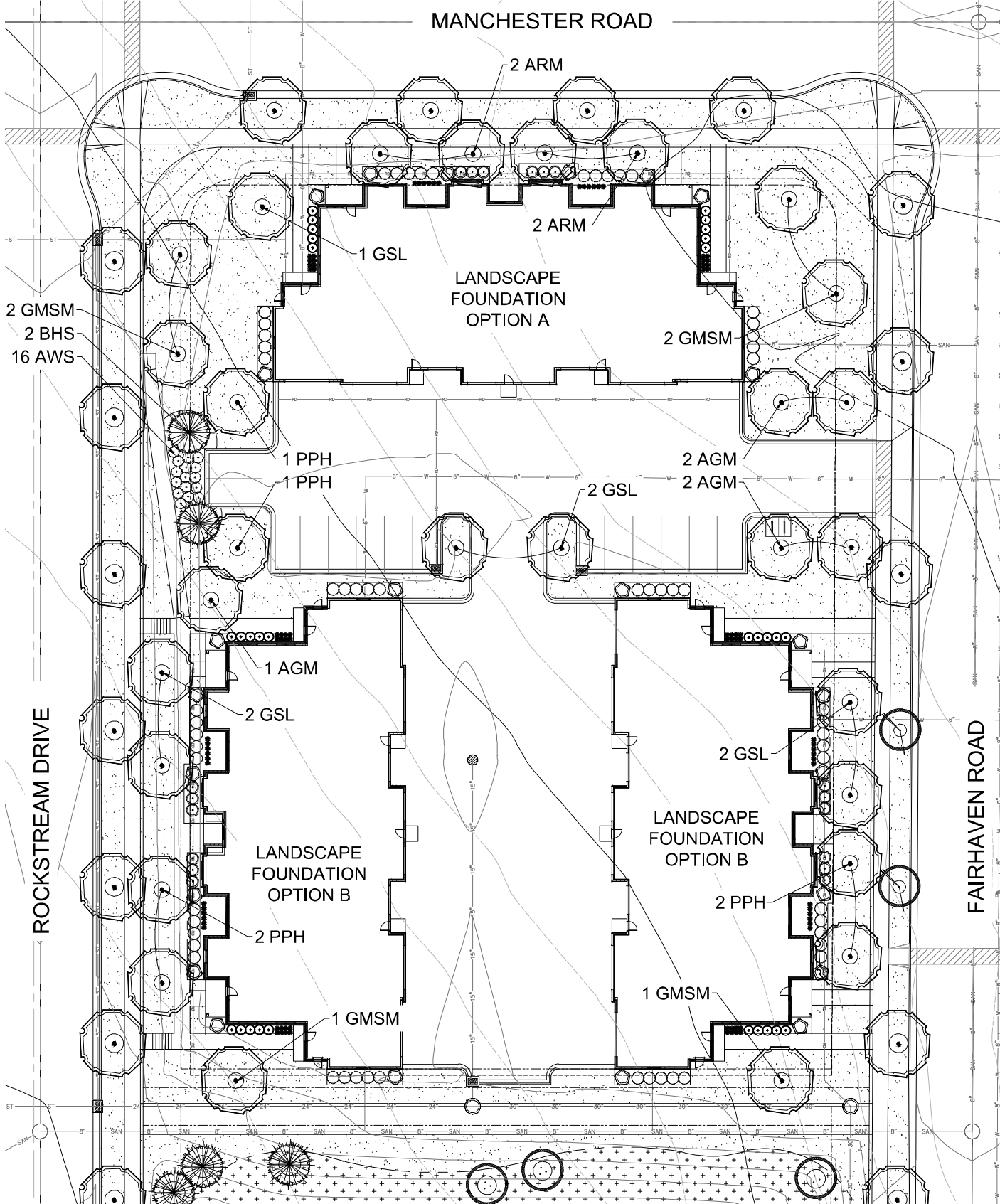
One (1) shade tree for every 160 SF of interior landscape area

Area of Parking Area: 5,055 SF

Landscape Area Shown: 408 SF

Required Number of Trees: 2.5 Trees

Number of Trees Shown: 3 Trees



LOT 3 OVERALL LANDSCAPE PLAN

Scale: 1" = 20'0"

DIGGERS HOTLINE

CALL DIGGERS HOTLINE
811 or 1-800-242-8511
MILW. AREA 259-1181
WS STATUTE 182.0175(1974)
REQUIRES MIN. 3 WORK DAYS
NOTICE BEFORE YOU EXCAVATE

CODE REQUIREMENTS

**HELLER &
ASSOCIATES, LLC**
LANDSCAPE ARCHITECTURE

P.O. Box 1359
Lake Geneva, Wisconsin 53147-1359
ph 262.639.9733
david@wdavidheller.com
www.wdavidheller.com

PROJECT

MAPLE GROVE MULTI-FAMILY

Maple Grove Road at
Manchester Road
Madison, WI

ISSUANCE AND REVISIONS

DATE	DESCRIPTION
12.13.19	ISSUE TO OWNER
12.17.19	SUBMITTAL
2.28.20	REVISED SITE PLAN

Information contained herein is based on survey information, field inspection, and believed to be accurate.

SHEET TITLE

OVERALL
LANDSCAPE
PLAN: LOT 3

PROJECT MANAGER WDH

PROJECT NUMBER 19-090

DATE 2.28.20

SHEET NUMBER

L 1.8



EVERGREEN SHRUBS	
KCPJ	Kallay Compact Pfitzer Juniper
TIY	Taunton Intermediate Yew
DECIDUOUS SHRUBS	
IH	Incrediball Hydrangea
UH	Unique Hydrangea
PPSR	Pink Pavement Series Rose
AWS	Anthony Waterer Spirea
MKL	Miss Kim Dwarf Lilac
KSV	Fragrant Koreanspice Viburnum
WRW	Wine & Roses Compact Wiegela

ORNAMENTAL GRASSES	
KFRG	Karl Foerster Feather Reed Grass
PDS	Prairie Dropseed

PLANT ABBREVIATIONS

- Contractor responsible for contacting Diggers Hotline (811 or 800-242-8511) to have site marked prior to excavation or planting.
- Contractor to verify all plant quantities shown on Plant & Material List and landscape planting symbols and report any discrepancies to Landscape Architect or General Contractor.
- All plantings shall comply with standards as described in American Standard of Nursery Stock - Z60.1 ANSI (latest version). Landscape Architect reserves the right to inspect, and potentially reject any plants that are inferior, compromised, undersized, diseased, improperly transported, installed incorrectly or damaged. No sub-standard "B Grade" or "Park Grade" plant material shall be accepted. Plant material shall originate from nursery(ies) with a similar climate as the planting site.
- Any potential plant substitutions must be approved by Landscape Architect or Owner. All plants must be installed as per sizes indicated on Plant & Material Schedule, unless approved by Landscape Architect. Any changes to sizes shown on plan must be submitted in writing to the Landscape Architect prior to installation.
- Topsoil in Parking Lot Islands (if applicable): All parking lot islands to be backfilled with topsoil to a minimum depth of 18" to insure long-term plant health. Topsoil should be placed within 3" of finish grade by General Contractor / Excavation Contractor during rough grading operations/activity. The landscape contractor shall be responsible for the fine grading of all disturbed areas, planting bed areas, and lawn areas. Crown all parking lot islands a minimum of 6" to provide proper drainage, unless otherwise specified.
- Tree Planting: Plant all trees slightly higher than finished grade at the root flare. Remove excess soil from the top of the root ball, if needed. Remove and discard non-biodegradable ball wrapping and support wire. Removed biodegradable burlap and wire cage (if present) from the top 1/3 of the rootball and carefully bend remaining wire down to the bottom of the hole. Once the tree has been placed into the hole and will no longer be moved, score the remaining 2/3 of the burlap and remove the twine. Provide three slow release fertilizer for each tree planted.
- Tree Planting: Backfill tree planting holes 80% existing soils removed from excavation and 20% plant starter mix. Avoid air pockets and do not tamp soil down. Discard any gravel, rocks, heavy clay, or concrete pieces. When hole is 3/4 full, trees shall be watered thoroughly, and water left to soak in before proceeding to fill the remainder of the hole. Water again to full soak in the new planting. Each tree shall receive a 3" deep, 4-5" diameter (see planting details or planting plan) shredded hardwood bark mulch ring around all trees planted in lawn areas. Do not build up any mulch onto the trunk of any tree. Trees that are installed incorrectly will be replaced at the time and expense of the Landscape Contractor.
- Shrub Planting: All shrubs to be planted in groupings as indicated on the Landscape Plan. Install with the planting of shrubs a 75% mix of plant starter with topsoil. Install topsoil into all plant beds as needed to achieve proper grade and displace undesirable soil (see planting detail). Remove all excessive gravel, clay and stones from plant beds prior to planting. When hole(s) are 3/4 full, shrubs shall be watered thoroughly, and water left to soak in before proceeding. Provide slow-release fertilizer packets at the rate of 1 per 24" height/diameter of shrub at planting.
- Mulching: All tree and shrub planting beds to receive a 3" deep layer of high quality shredded hardwood bark mulch (not pigment dyed or enviro-mulch). All perennial planting areas (groupings) shall receive a 2" layer of shredded hardwood bark mulch, and groundcover areas a 1-2" layer of the same mulch. Do not mulch annual flower beds (if applicable). Do not allow mulch to contact plant stems and tree trunks.
- Edging: All planting beds shall be edged with a 4" deep spade edge using a flat landscape spade or a mechanical edger. Bedlines are to be cut crisp, smooth as per plan. A clean definition between landscape beds and lawn is required. Pack mulch against lawn edge to hold in place.
- Plant bed preparation/Soil Amendment composition: All perennial, groundcover and annual areas (if applicable) are required to receive a blend of organic soil (Soil Amendments) amendments prior to installation. Roto-till the following materials at the following ratio, into existing soil beds or installed topsoil beds to a depth of approximately 6"-10". Containerized and balled & burlapped plant material should be back-filled with amended soil.

Per 100 SF of bed area (Soil Amendment composition):

 - 3/4 CY Peat Moss or Mushroom Compost
 - 1/4 CY blended/pulverized Topsoil
 - 1/4 CY composted manure

In roto-tilled beds only, also include in above mixture:

 - 2 lbs Starter Fertilizer

12. Lawn Installation for all sodded turfgrass areas: Contractor to furnish and prepare blended topsoil (2" minimum) and sod bed, removing all debris and stones 1/2" and larger. Apply a 10-10-10 starter lawn fertilizer uniformly throughout areas prior to laying sod. Use only premium sod blend according to TPI (revised 1995) and ASPA Standards. Install sod uniformly with staggered joints, laid tightly end to end and side to side. Roll sod with a walk behind roller and water immediately upon installation to a 3" depth. Stake any sod installed on slopes steeper than 1:3, and in all swale applications. Contractor is responsible to provide a smooth, uniform, healthy turf, and is responsible for the first two mowings of the newly installed turf, and is also responsible for watering during this period.

13. Installation preparation for all seeded areas: remove/all off any existing unwanted vegetation prior to seeding. Prepare the topsoil (if adequate or provide as in item #6 above) and seed bed by removing all surface stones 1" or larger. Apply a starter fertilizer and specified seed uniformly at the specified rate, and provide mulch covering suitable to germinate and establish turf. Provide seed and fertilizer specifications to Landscape Architect and Owner prior to installation. Erosion control measures are to be used in swales and on slopes in excess of 1:3 and where applicable (see Civil Engineering Drawings). Methods of installation may vary are the discretion of the Landscape Contractor on his/her responsibility to establish and guarantee a smooth, uniform, quality turf. A minimum of 2" of blended, prepared and non-compacted topsoil is required for all lawn areas. If straw mulch is used as a mulch covering, a tackifier may be necessary to avoid wind dispersal of mulch covering. Marsh hay containing reed canary grass is NOT acceptable as a mulch covering.

An acceptable quality seed installation is defined as having:

- No bare spots larger than one (1) square foot
- No more than 10% of the total area with bare areas larger than one (1) square foot
- A uniform coverage through all turf areas

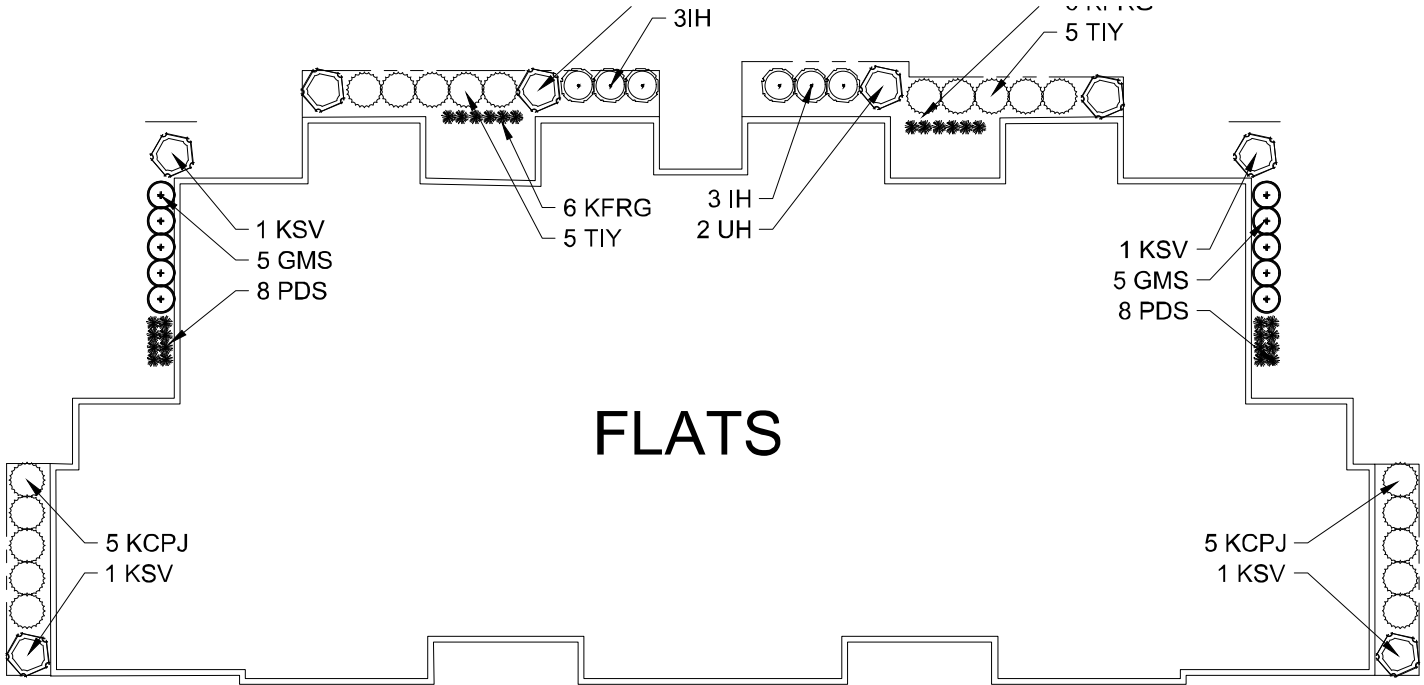
14. No-Mow seed areas: "No-Mow" fine fescue seed mix with annual rye nurse crop (available at Cedar Creek Seed Farm 888-313-6807; or Prairie Nursery 608-296-3679) or approved equivalent mix from a reputable seed mix provider. Apply at 220 lbs per acre or at rate recommended by supplier. Prepare seed bed and soil as specified in item #13 above.
15. Native Prairie Seed Mix / Stormwater Seed Mix: Native seed mixes as listed on the Plant and Material List or other seeding schedules outlined on the landscape plan set. Seed mixes available from Prairie Nursery 608-296-3679 or JF New 800-848-1789 or approved equivalent mix from a reputable seed mix provider. Apply at rates specified herein, or per supplier recommendation. Prepare soil and seed bed as in item #13 above.

16. Warranty and Replacements: All plantings are to be watered thoroughly at the time of planting, through construction and upon completion of project as required. Trees, Evergreens, and Shrubs (deciduous and evergreen) shall be guaranteed (100% replacement) for a minimum of one (1) year from the date of project completion. Perennials, groundcovers, and ornamental grasses shall be guaranteed for a minimum of one (1) growing season. Perennials, groundcovers, and ornamental grasses planted after September 15th shall be guaranteed through May 31st of the following year. Only one replacement per plant will be required during the warranty period, except for losses or replacements due to failure to comply with specified requirements. Watering and general ongoing maintenance instructions are to be supplied by the Landscape Contractor to the Owner upon completion of the project.

17. The Landscape Contractor is responsible for the watering and maintenance of all landscape areas for a period of 45 days after the substantial completion of the landscape installation. This shall include all trees, shrubs, evergreens, perennials, ornamental grasses, turf grass, no-mow grass, and native prairie seed mix / stormwater seed mix. Work also includes weeding, edging, mulching (only if required), fertilizing, trimming, sweeping up grass clippings, pruning and deadheading.

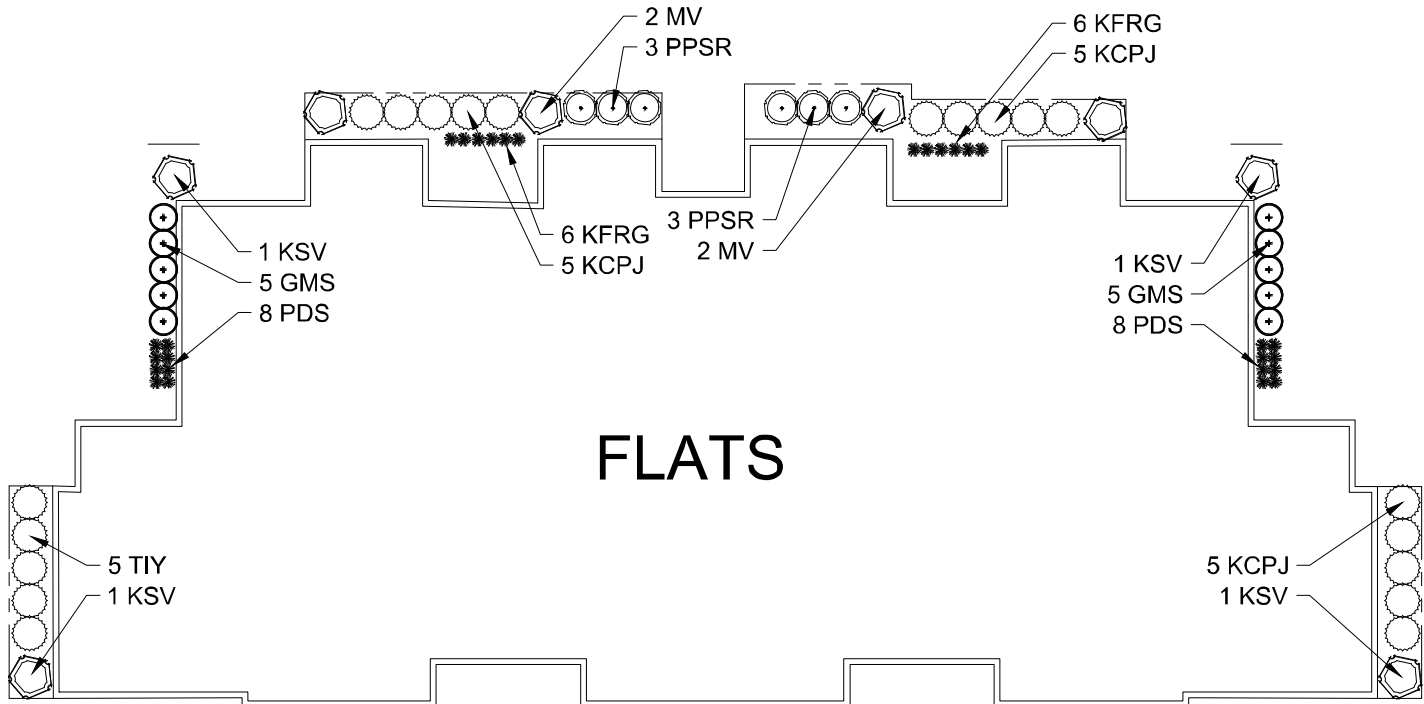
18. Project Completion: Landscape Contractor is responsible to conduct a final review of the project, upon completion, with the Landscape Architect, Client or Owner / Client Representative, and the General Contractor to answer questions, provide written care instructions for new plantings and turf, and insure that all specifications have been met.

LANDSCAPE GENERAL NOTES



LANDSCAPE FOUNDTION - OPTION "A"

Scale: 1" = 10'0"



LANDSCAPE FOUNDTION - OPTION "B"

Scale: 1" = 10'0"



P.O. Box 1359
Lake Geneva, Wisconsin 53147-1359
ph 262.639.9733
david@wdavidheller.com
www.wdavidheller.com

PROJECT

MAPLE GROVE MULTI-FAMILY

Maple Grove Road at
Manchester Road
Madison, WI

ISSUANCE AND REVISIONS

DATE	DESCRIPTION
12.13.19	ISSUE TO OWNER
12.17.19	SUBMITTAL
2.28.20	REVISED SITE PLAN

Information contained herein is based on survey information, field inspection, and believed to be accurate.

SHEET TITLE

OVERALL LANDSCAPE PLAN: LOT 3

PROJECT MANAGER WDH

PROJECT NUMBER 19-090

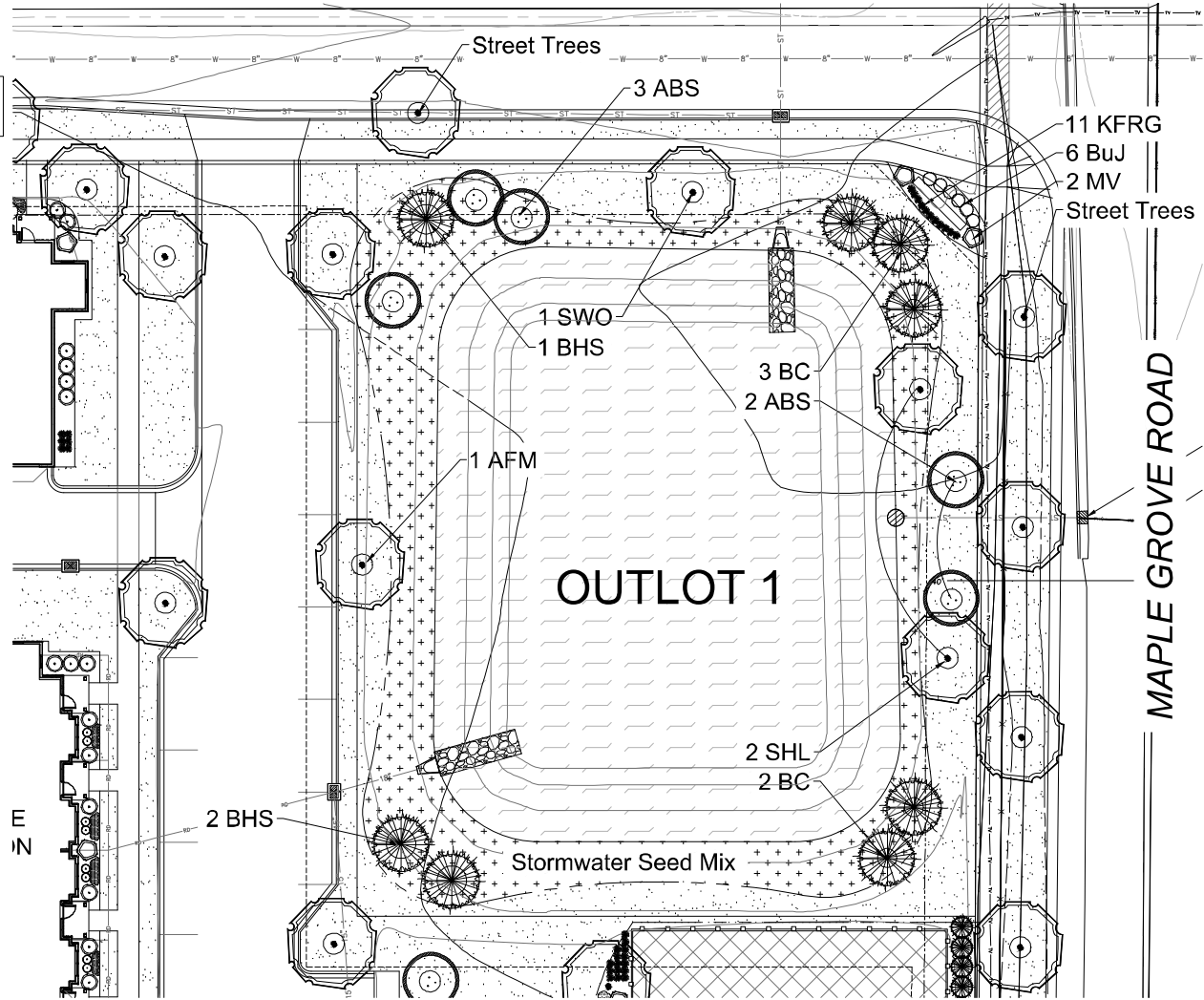
DATE 2.28.20

SHEET NUMBER

L 1.9



TO OBTAIN LOCATIONS OF PARTICIPANTS' UNDERGROUND FACILITIES BEFORE YOU DIG IN WISCONSIN
CALL DIGGERS HOTLINE
811 or 1-800-242-8311
MILWAUKEE AREA: 258-1181
WIS. STATUTE 182.0175(1974)
REQUIRES MIN. 3 WORK DAYS NOTICE BEFORE YOU EXCAVATE



ENLARGED LANDSCAPE PLAN

Scale: 1" = 20'0"

Cardno Native Plant Nursery
www.cardnonativeplantnursery
128 Sunset Drive
Walkerton, Indiana 46574
Ph: 574-586-1412

Stormwater Seed Mix
For Use on Stormwater Management Ponds (SMP) side slopes to High Water Line (HWL)

PLS
Quinces/acre

Botanical Name	Common Name	
Permanent Grasses/Sedges/Rushes:		
<i>Carex cristatella</i>	Crested Oval Sedge	1.00
<i>Carex frankii</i>	Striety Cattail Sedge	1.00
<i>Carex lurida</i>	Bottlebrush Sedge	2.00
<i>Carex sparganoides</i> v. <i>cephaloidea</i>	Rough-Clustered Sedge	2.00
<i>Carex vulpinoidea</i>	Brown Fox Sedge	6.00
<i>Eleocharis ovata</i>	Blunt Spike Rush	0.50
<i>Elymus virginicus</i>	Virginia Wild Rye	12.00
<i>Glyceria striata</i>	Tow Manna Grass	1.25
<i>Juncus effusus</i>	Common Rush	1.00
<i>Juncus torreyi</i>	Torrey's Rush	0.25
<i>Leersia oryzoides</i>	Rice Cut Grass	1.00
<i>Panicum virgatum</i>	Switch Grass	2.00
<i>Scirpus atrovirens</i>	Dark Green Rush	1.00
<i>Scirpus cyperinus</i>	Wool Grass	0.50
<i>Scirpus fluviatilis</i>	River Bulrush	0.25
<i>Scirpus validus</i>	Great Bulrush	6.00
Total		45.75

Temporary Cover:		
<i>Avena sativa</i>	Common Oat	360.00
<i>Lolium multiflorum</i>	Annual Rye	116.00
Total		476.00

Forbs:		
<i>Alisma</i> spp.	Water Plantain (Various Mix)	4.25
<i>Asclepias incarnata</i>	Swamp Milkweed	1.50
<i>Bidens</i> spp.	Bidens (Various Mix)	2.00
<i>Helenium autumnale</i>	Shinerweed	3.00
<i>Mimulus ringens</i>	Monkey Flower	1.00
<i>Pentstemon sedoides</i>	Catch Stonecrop	0.50
<i>Polygonum pennsylvanicum</i>	Periwinkle	4.00
<i>Rudbeckia subtomentosa</i>	Sweet Black-Eyed Susan	1.00
<i>Sagittaria latifolia</i>	Broad-Leaf Arrowhead	1.00
<i>Senna hebecarpa</i>	Winged Senna	1.00
<i>Thalictrum dasycarpum</i>	Purple Meadow Rue	2.00
Total		21.25

Approximate area of coverage:	
Total area (SF) of coverage surrounding SWM ponds:	50,300
Total area (acres) of coverage surrounding SWM ponds:	1.15

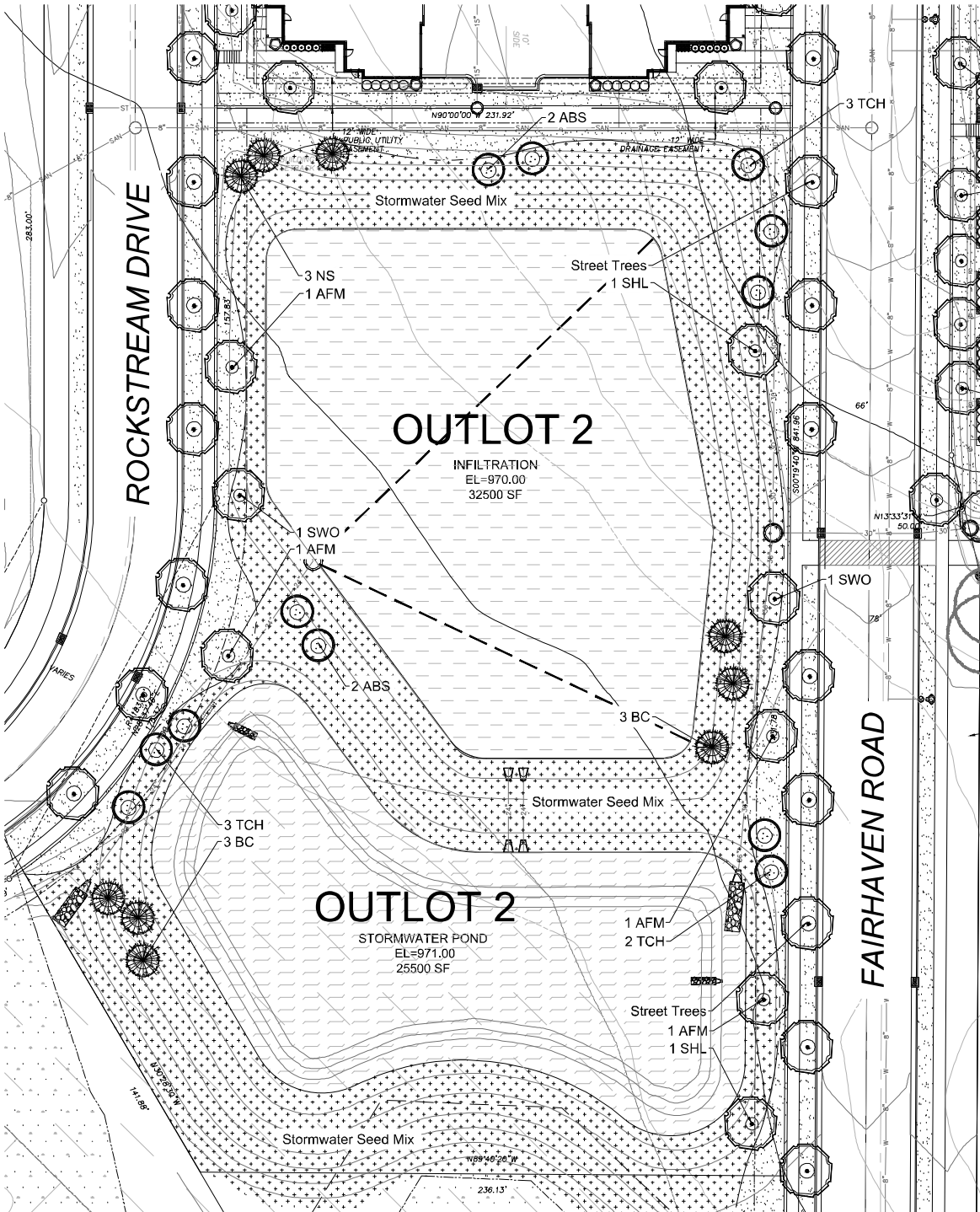
STORMWATER SEED MIX

PLANT KEY	QUANTITY	PLANT MATERIAL PROPOSED			ROOT	SPECIFICATION / NOTES	PLANT SPACING
Proposed Street Trees	19	Shade Trees		2.5"	BSB	Straight central leader, full and even crown. Prune only after planting	
PLANT KEY	QUANTITY	BOTANICAL NAME	COMMON NAME	CALIPER or HEIGHT	ROOT	SPECIFICATION / NOTES	PLANT SPACING
Proposed Landscape Materials							
SHADE TREES (DECIDUOUS)							
AFM	5	Acer freemanii 'Autumn Fantasy'	Autumn Fantasy Maple	2.5"	BSB	Straight central leader, full and even crown. Prune only after planting	
SHL	4	Gleditsia triacanthos 'Skyline'	Skyline Honeylocust	2.5"	BSB	Straight central leader, full and even crown. Prune only after planting	
SWO	3	Quercus bicolor	Swamp White Oak	2.5"	BSB	Straight central leader, full and even crown. Prune only after planting	
BC	11	Taxodium distichum	Bald Cypress	2.5"	BSB	Straight central leader, full and even crown. Prune only after planting	
PLANT KEY	QUANTITY	BOTANICAL NAME	COMMON NAME	CALIPER or HEIGHT	ROOT	SPECIFICATION / NOTES	PLANT SPACING
ORNAMENTAL TREES (DECIDUOUS)							
ABS	9	Amelanchier alnifolia 'Autumn Brilliance'	Autumn Brilliance Shadblow	7.8" H	BSB	Well balanced multi-stemmed tree with minimum four canes, and full appearance	
TCH	8	Crataegus crus-galli 'Ironmilk'	Thornless Cockspur Hawthorn	7.8" H	BSB	Well balanced multi-stemmed tree with minimum four canes, and full appearance	
PLANT KEY	QUANTITY	BOTANICAL NAME	COMMON NAME	HEIGHT SIZE	ROOT	SPECIFICATION / NOTES	PLANT SPACING
EVERGREEN TREES							
NS	3	Picea abies	Norway Spruce	8' H	BSB	Evenly shaped tree with branching to the ground	17'
BHS	3	Picea glauca 'Merrill'	Black Hills Spruce	8' H	BSB	Evenly shaped tree with branching to the ground	15'
PLANT KEY	QUANTITY	BOTANICAL NAME	COMMON NAME	SHRUB SIZE (HEIGHT)	ROOT/CONT.	SPECIFICATION / NOTES	PLANT SPACING
EVERGREEN SHRUBS							
Bul	6	Juniperus sabina 'Buffalo'	Buffalo Juniper	18" w	Cont.	Full rounded well branched shrub	42"
PLANT KEY	QUANTITY	BOTANICAL NAME	COMMON NAME	SHRUB SIZE (HEIGHT)	ROOT/CONT.	SPECIFICATION / NOTES	PLANT SPACING
DECIDUOUS SHRUBS							
MB	2	Viburnum lentana 'Mohican'	Mohican Viburnum	48"	BSB	Full, well rounded plant with moist rootball and healthy appearance	60"
PLANT KEY	QUANTITY	BOTANICAL NAME	COMMON NAME	CONTAINER SIZE		SPECIFICATION / NOTES	PLANT SPACING
ORNAMENTAL GRASSES							
KFRG	11	Calamagrostis acutiflora 'Karl Foerster'	Karl Foerster Feather Reed Grass	#1	Cont.	Full, well rooted plant	15-18"
PLAIN KEY	QUANTITY	PLANT MATERIAL PROPOSED		CONTAINER SIZE		SPECIFICATION / NOTES	PLANT SPACING
LAWN	4950	Lawn Establishment Area / Grading Area		SF		Reinder's Deluxe 50 Seed Mix (800-785-3301)	
SWSM	1.15	Stormwater Seeding Mix		Acres	SF	Cardno Native Plant Nursery (574-586-2412)	
	8930	Erosion Matting for sloped seeded areas				EroTech E575 Erosion Control Blanket (or approved equal)	
Hardscape Materials							
SH	13	Shredded Hardwood Mulch (3" depth)		1,400 SF Bed Area	CY	Bark Mulch; apply Preemergent after installation of mulch	
SA	9	Soil Amendments (2" depth)		1,400 SF Bed Area	CY		
TP	291	Pulverized Topsoil (Lawn Area)		43,050 SF Bed Area	CY		
TP	9	Pulverized Topsoil (2" over bed area)		1,400 SF Bed Area	CY		

*Landscape counts and quantities are provided as a service to the Landscape Contractor. Landscape Contractor is responsible for verifying these counts and quantities in order to provide a complete landscape installation as outlined on this Landscape Master Plan. In the event that a discrepancy occurs between this schedule and the Landscape Master Plan, the Landscape Master Plan, including the graphics and notations depicted therein, shall govern.

Seed Compositions:
Reinder's Deluxe 50 Seed Mix (800-785-3301):
20% Kentucky Bluegrass (Soft Quality)
15% Kentucky Bluegrass
15% Kentucky Bluegrass
15% Kentucky Bluegrass
25% Creeping Red Fescue

Seed at rate of 150-200# per acre



ENLARGED LANDSCAPE PLAN

Scale: 1" = 30'0"

Information contained herein is based on survey information, field inspection, and believed to be accurate.

SHEET TITLE

OVERALL LANDSCAPE PLAN: OUTLOTS 1 & 2

PROJECT MANAGER WDH

PROJECT NUMBER 19-090

DATE 2.28.20

SHEET NUMBER

L 1.10

HELLER & ASSOCIATES, LLC
LANDSCAPE ARCHITECTURE



P.O. Box 1359
Lake Geneva, Wisconsin 53147-1359
ph 262.639.9733
david@wdavidheller.com
www.wdavidheller.com

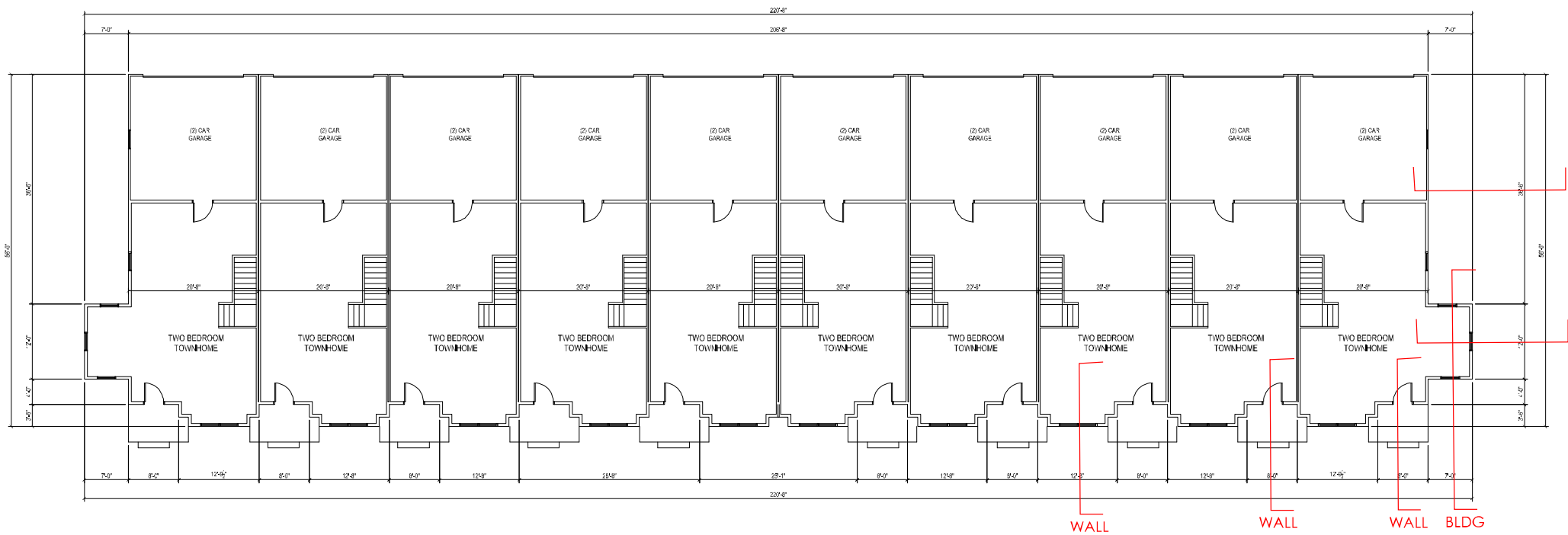
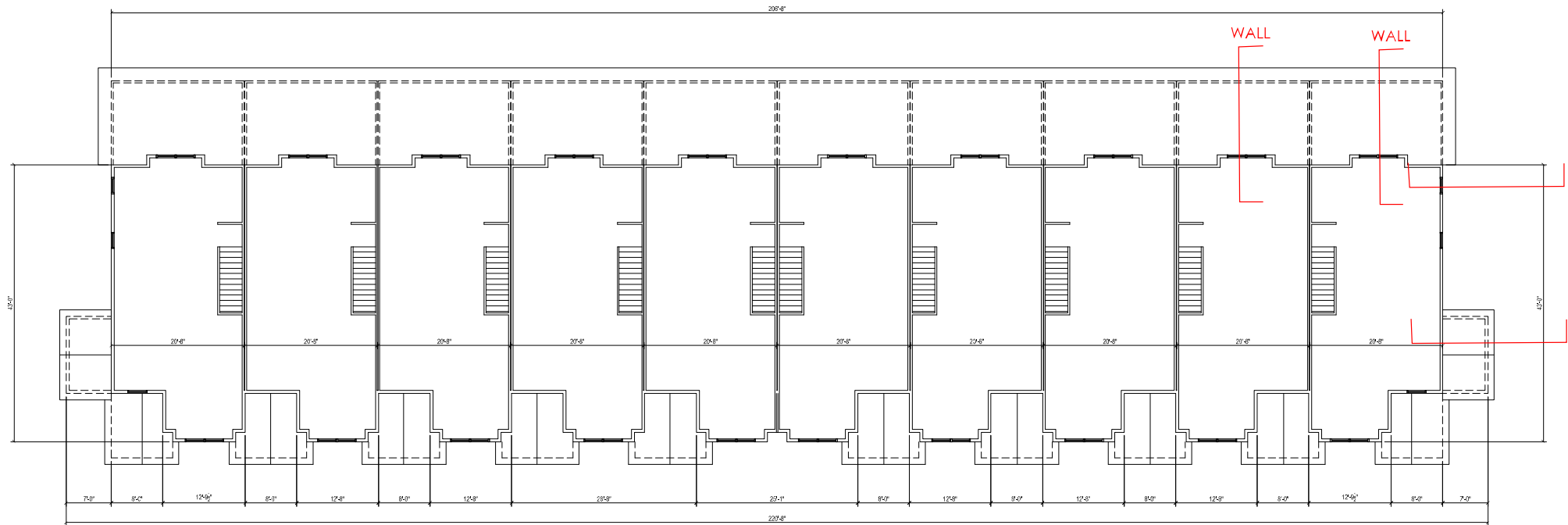
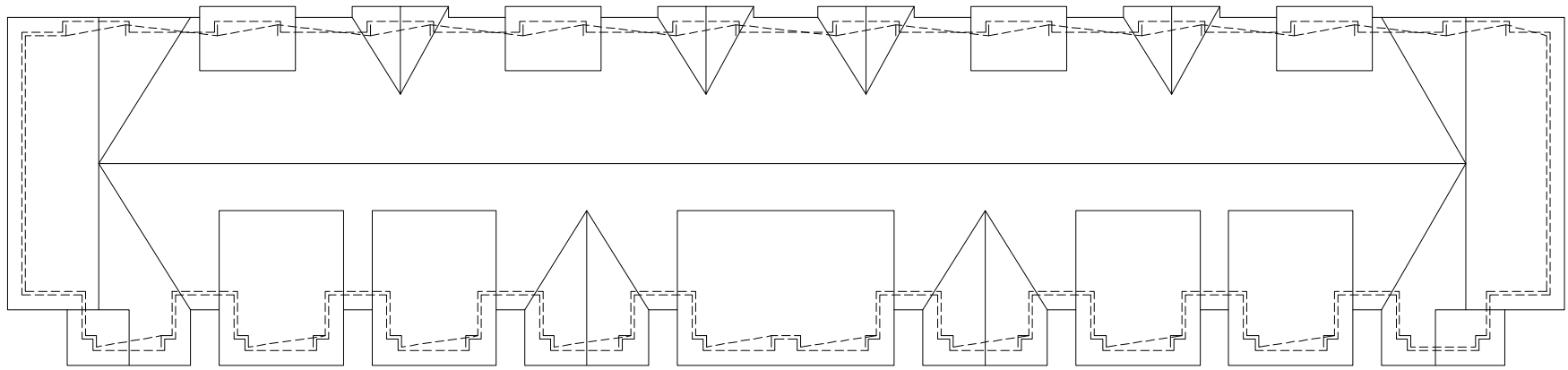
PROJECT

MAPLE GROVE MULTI-FAMILY

Maple Grove Road at
Manchester Road
Madison, WI

ISSUANCE AND REVISIONS

DATE	DESCRIPTION
12.13.19	ISSUE TO OWNER
12.17.19	SUBMITTAL
2.28.20	REVISED SITE PLAN



JLA
ARCHITECTS

MADISON : MILWAUKEE
jla-ap.com

JLA PROJECT NUMBER: 17-1018



MAPLE GROVE DRIVE RESIDENTIAL TOWNHOMES

UDC INITIAL

PROGRESS DOCUMENTS

These documents reflect progress and intent and may be subject to change, including additional detail. These are not final construction documents and should not be used for final bidding or construction-related purposes.

DATE OF ISSUANCE FEBRUARY 3, 2020

REVISION SCHEDULE

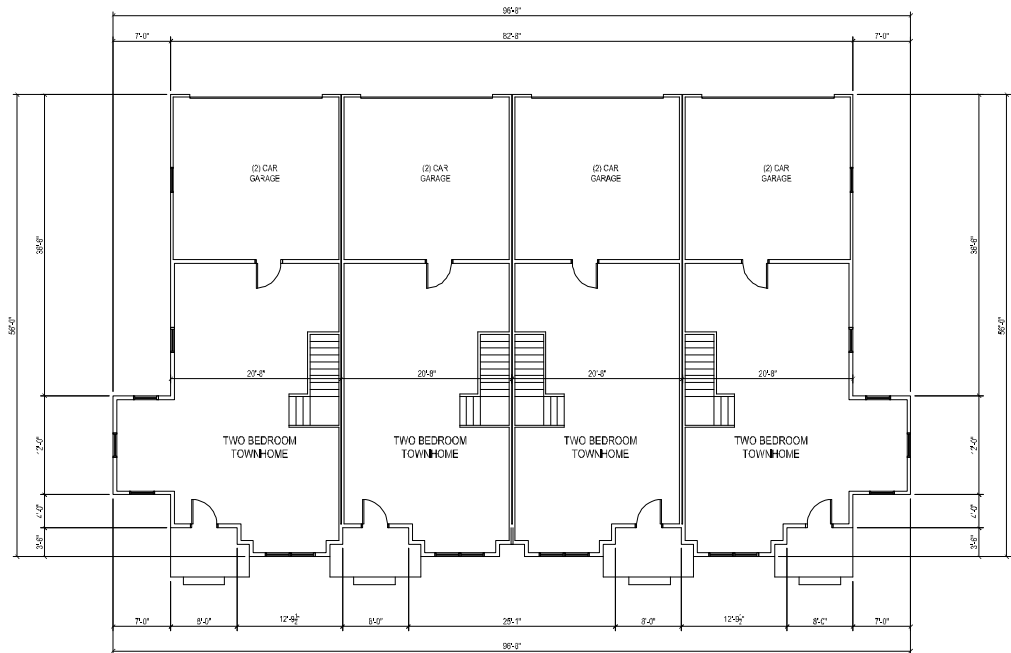
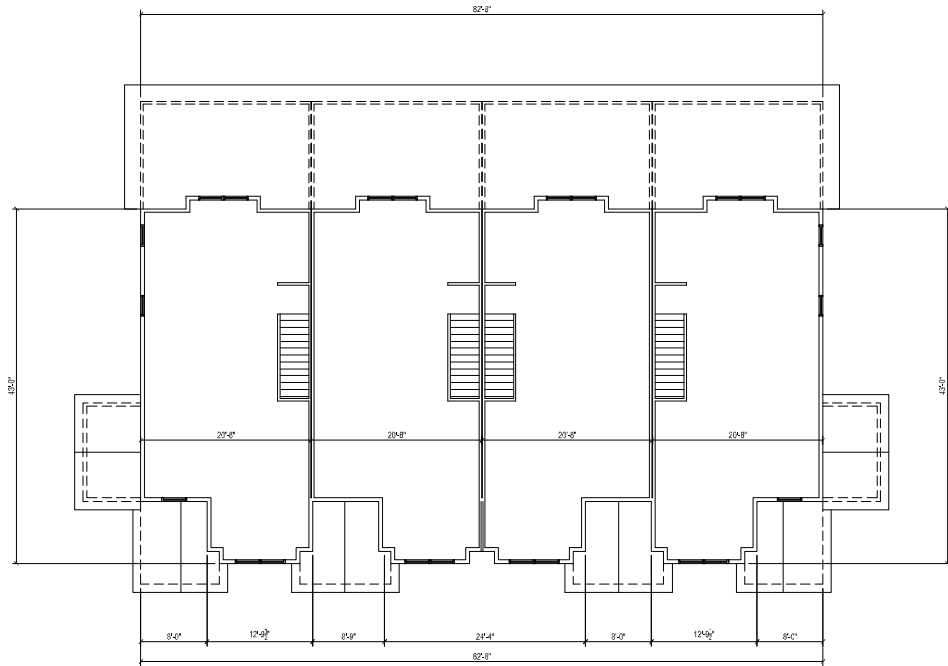
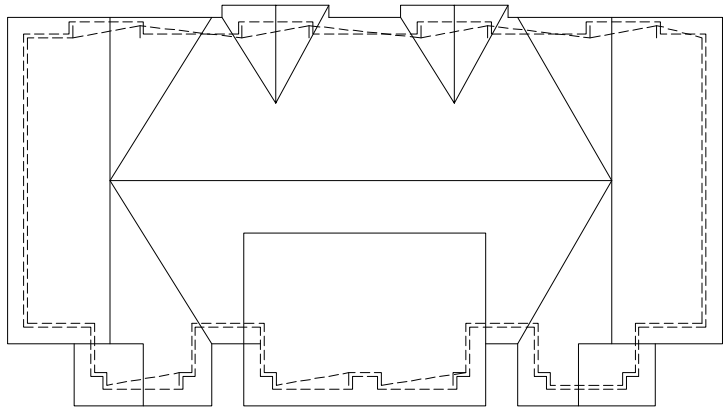
Mark	Description	Date
------	-------------	------

SHEET TITLE

FLOOR PLANS

SHEET NUMBER

T-101



MADISON : MILWAUKEE
jla-ap.com

JLA PROJECT NUMBER: 17-1018



MAPLE GROVE DRIVE RESIDENTIAL TOWNHOMES

UDC INITIAL

PROGRESS DOCUMENTS

These documents reflect progress and intent and may be subject to change, including additional detail. These are not final construction documents and should not be used for final bidding or construction-related purposes.

DATE OF ISSUANCE FEBRUARY 3, 2020

REVISION SCHEDULE

Mark	Description	Date
------	-------------	------

SHEET TITLE

FLOOR PLANS

SHEET NUMBER

T-102



⑥ Side Elevation 2
1/8" = 1'-0"



⑧ 4 Unit West Elevation
1/8" = 1'-0"



⑫ 10 Unit South Elevation
1/8" = 1'-0"



JLA
ARCHITECTS

MADISON : MILWAUKEE
jla-ap.com

JLA PROJECT NUMBER: XX-XXXX-XX

MAPLE GROVE DRIVE RESIDENTIAL TOWNHOMES

UDC INITIAL

PROGRESS DOCUMENTS

These documents reflect progress and intent and may be subject to change, including additional detail. These are not final construction documents and should not be used for final bidding or construction-related purposes.

DATE OF ISSUANCE FEBRUARY 3, 2020

REVISION SCHEDULE

Mark	Description	Date
------	-------------	------

SHEET TITLE

SKETCHUP
ELEVATIONS

SHEET NUMBER

T-A200



⑥ Side Elevation 1
1/8" = 1'-0"



⑧ 4 Unit East Elevation
1/8" = 1'-0"



⑩ 10 Unit North Elevation
1/8" = 1'-0"



JLA
ARCHITECTS

MADISON : MILWAUKEE
jla-ap.com

JLA PROJECT NUMBER: XX-XXXX-XX

MAPLE GROVE DRIVE
RESIDENTIAL
TOWNHOMES

UDC INITIAL

PROGRESS DOCUMENTS

These documents reflect progress and intent and may be subject to change, including additional detail. These are not final construction documents and should not be used for final bidding or construction-related purposes.

DATE OF ISSUANCE FEBRUARY 3, 2020

REVISION SCHEDULE

Mark	Description	Date
------	-------------	------

SHEET TITLE

SKETCHUP
ELEVATIONS

SHEET NUMBER

T-A201



⑥ PERSPECTIVE
1/8" = 1'-0"



①⑥ PERSPECTIVE
1/8" = 1'-0"



JLA
ARCHITECTS

MADISON : MILWAUKEE
jla-ap.com

JLA PROJECT NUMBER: XX-XXXX-XX

MAPLE GROVE DRIVE
RESIDENTIAL
TOWNHOMES

UDC INITIAL

PROGRESS DOCUMENTS

These documents reflect progress and intent and may be subject to change, including additional detail. These are not final construction documents and should not be used for final bidding or construction-related purposes.

DATE OF ISSUANCE FEBRUARY 3, 2020

REVISION SCHEDULE

Mark	Description	Date
------	-------------	------

SHEET TITLE

SKETCHUP
PERSPECTIVES

SHEET NUMBER

T-A202



6 PERSPECTIVE
1/8" = 1'-0"



16 PERSPECTIVE
1/8" = 1'-0"



JLA
ARCHITECTS

MADISON : MILWAUKEE
jla-ap.com

JLA PROJECT NUMBER: XX-XXXX-XX

MAPLE GROVE DRIVE RESIDENTIAL TOWNHOMES

UDC INITIAL

PROGRESS DOCUMENTS

These documents reflect progress and intent and may be subject to change, including additional detail. These are not final construction documents and should not be used for final bidding or construction-related purposes.

DATE OF ISSUANCE FEBRUARY 3, 2020

REVISION SCHEDULE

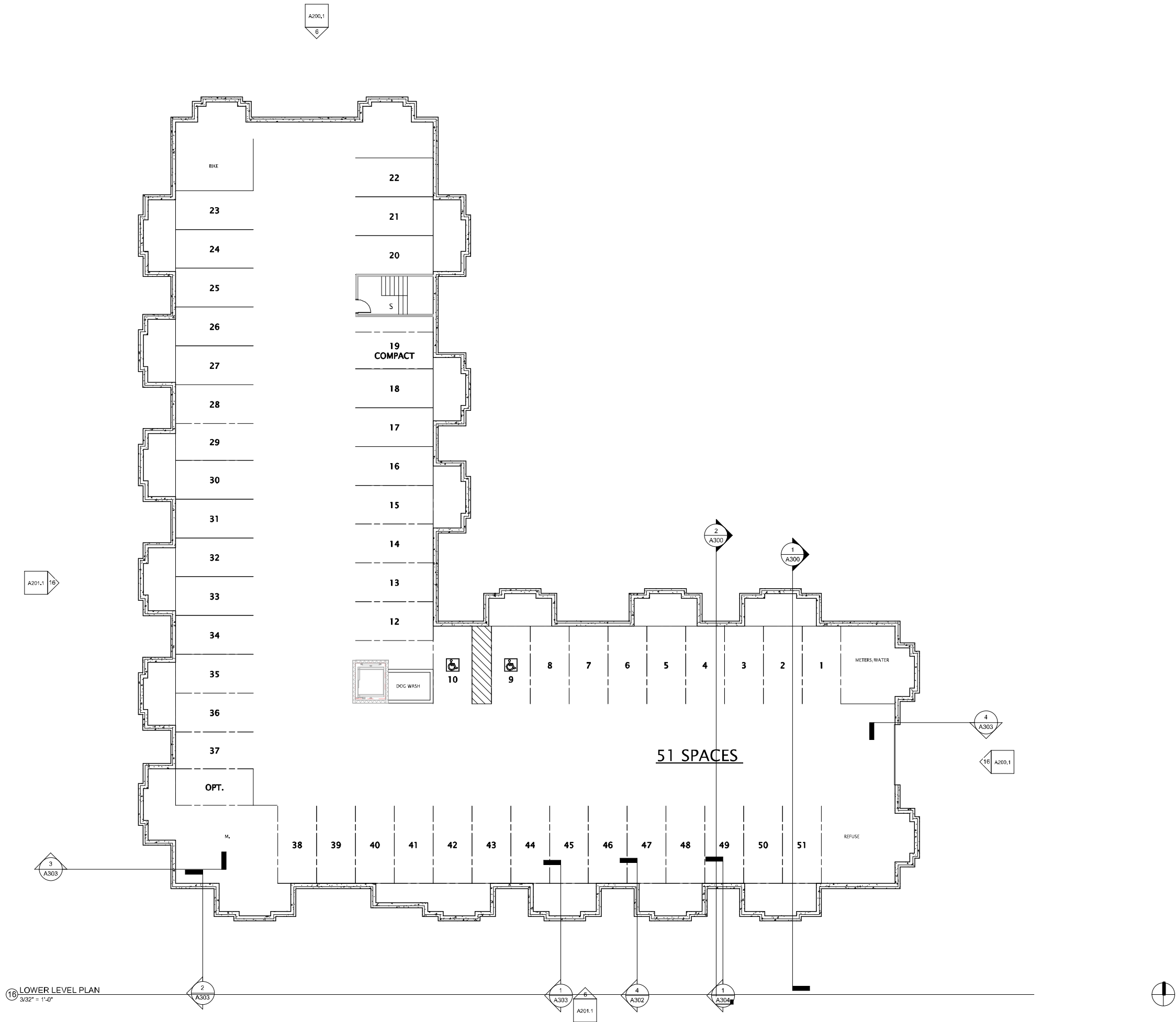
Mark	Description	Date
------	-------------	------

SHEET TITLE

SKETCHUP
PERSPECTIVES

SHEET NUMBER

T-A202



16 LOWER LEVEL PLAN
3/32" = 1'-0"



JLA
ARCHITECTS

MADISON : MILWAUKEE
jla-ap.com

JLA PROJECT NUMBER: XX-XXXX-XX

MAPLE GROVE DRIVE
RESIDENTIAL
APARTMENTS

UDC INITIAL

PROGRESS DOCUMENTS

These documents reflect progress and intent and may be subject to change, including additional detail. These are not final construction documents and should not be used for final bidding or construction-related purposes.

DATE OF ISSUANCE FEBRUARY 3, 2020

REVISION SCHEDULE

Mark	Description	Date
------	-------------	------

SHEET TITLE

LOWER LEVEL PLAN

SHEET NUMBER

A-A100



JLA
ARCHITECTS

MADISON : MILWAUKEE
jla-ap.com

JLA PROJECT NUMBER: XX-XXXX-XX

MAPLE GROVE DRIVE
RESIDENTIAL
APARTMENTS

UDC INITIAL

PROGRESS DOCUMENTS

These documents reflect progress and intent and may be subject to change, including additional detail. These are not final construction documents and should not be used for final bidding or construction-related purposes.

DATE OF ISSUANCE FEBRUARY 3, 2020

REVISION SCHEDULE

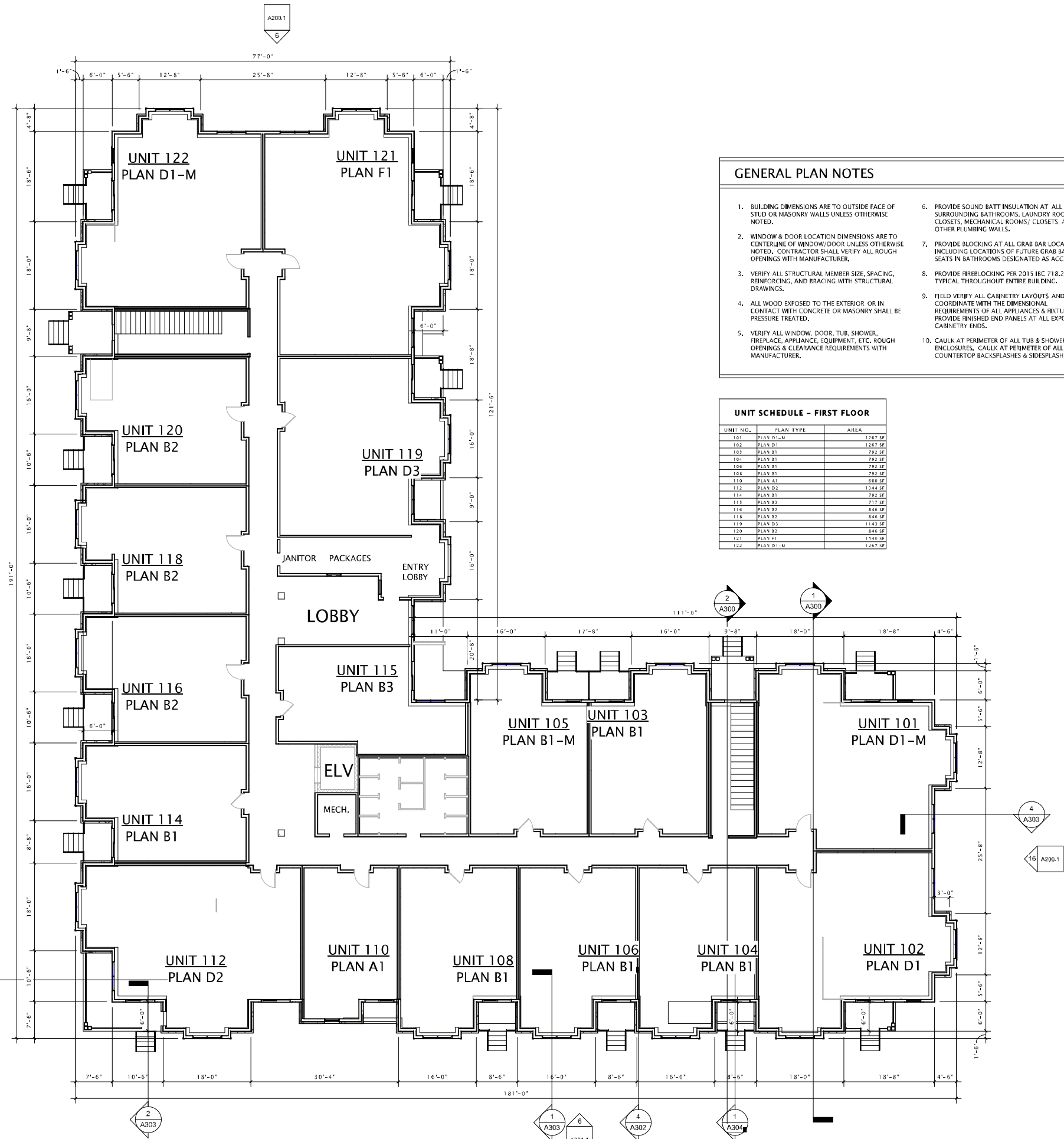
Mark	Description	Date
------	-------------	------

SHEET TITLE

FIRST FLOOR PLAN

SHEET NUMBER

A-A101



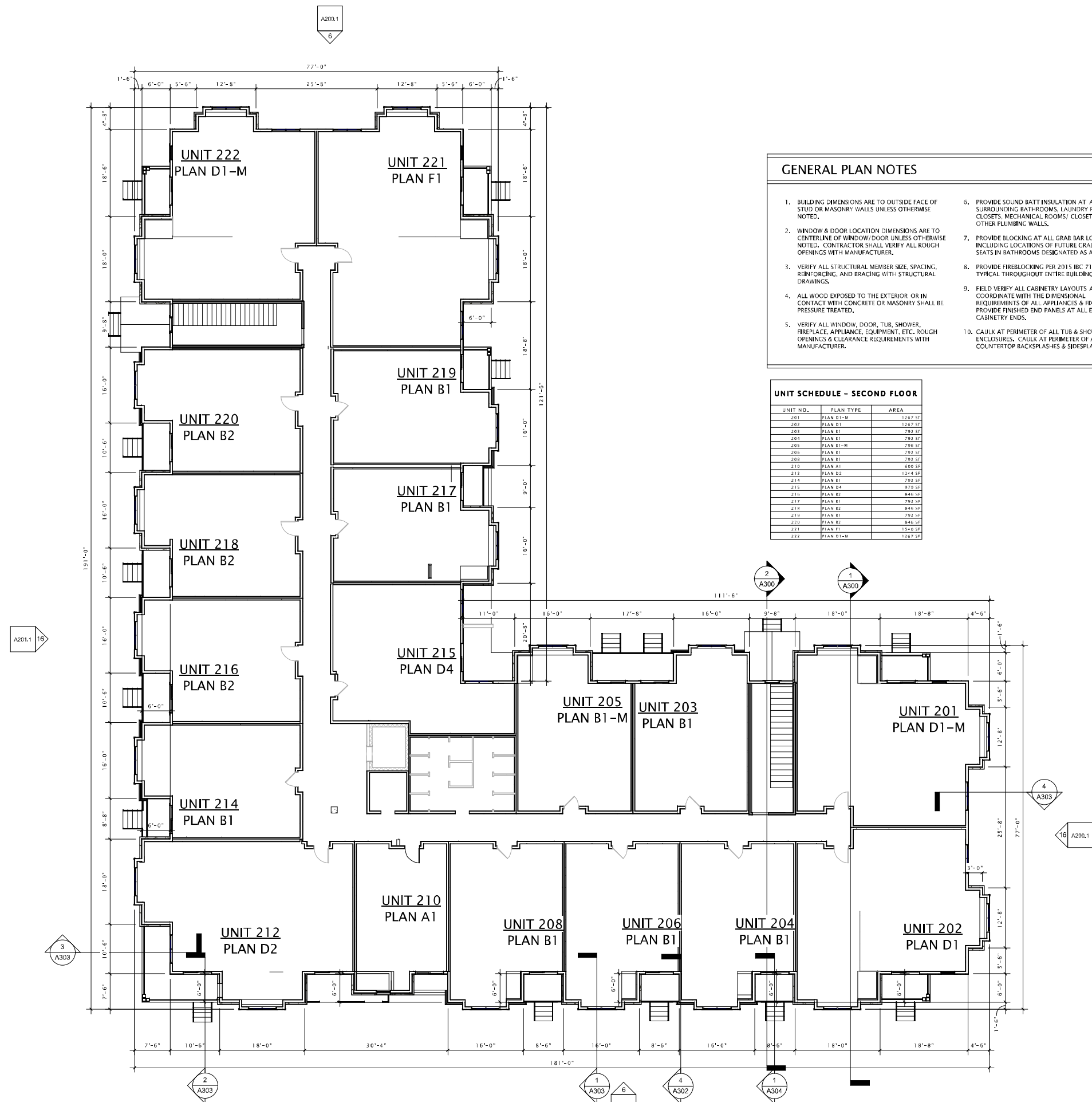
GENERAL PLAN NOTES

- BUILDING DIMENSIONS ARE TO OUTSIDE FACE OF STUD OR MASONRY WALLS UNLESS OTHERWISE NOTED.
- WINDOW & DOOR LOCATION DIMENSIONS ARE TO CENTERLINE OF WINDOW/DOOR UNLESS OTHERWISE NOTED. CONTRACTOR SHALL VERIFY ALL ROUGH OPENINGS WITH MANUFACTURER.
- VERIFY ALL STRUCTURAL MEMBER SIZE, SPACING, REINFORCING, AND BRACING WITH STRUCTURAL DRAWINGS.
- ALL WOOD EXPOSED TO THE EXTERIOR OR IN CONTACT WITH CONCRETE OR MASONRY SHALL BE PRESSURE TREATED.
- VERIFY ALL WINDOW, DOOR, TUB, SHOWER, FIREPLACE, APPLIANCE, EQUIPMENT, ETC. ROUGH OPENINGS & CLEARANCE REQUIREMENTS WITH MANUFACTURER.
- PROVIDE SOUND BATT INSULATION AT ALL WALLS SURROUNDING BATHROOMS, LAUNDRY ROOMS/ CLOSETS, MECHANICAL ROOMS/ CLOSETS, AND OTHER PLUMBING WALLS.
- PROVIDE BLOCKING AT ALL GRAB BAR LOCATIONS - INCLUDING LOCATIONS OF FUTURE GRAB BARS & SEATS IN BATHROOMS DESIGNATED AS ACCESSIBLE.
- PROVIDE FIREBLOCKING PER 2015 IBC 718.2.1 - TYPICAL THROUGHOUT ENTIRE BUILDING.
- FIELD VERIFY ALL CABINETRY LAYOUTS AND COORDINATE WITH THE DIMENSIONAL REQUIREMENTS OF ALL APPLIANCES & FIXTURES. PROVIDE FINISHED END PANELS AT ALL EXPOSED CABINETRY ENDS.
- CAULK AT PERIMETER OF ALL TUB & SHOWER ENCLOSURES. CAULK AT PERIMETER OF ALL COUNTERTOP BACKSPASHES & SIDESPLASHES.
- INSTALL FIXTURES, ACCESSORIES, ETC. ACCORDING TO THE MOUNTING HEIGHT SCHEDULE.
- ALL WINDOWS & PATIO DOORS SHALL BE AS SPECIFIED IN THE SCOPE SPECIFICATIONS AND AS INDICATED ON THE EXTERIOR MATERIAL AND WINDOW SCHEDULES.

UNIT SCHEDULE - FIRST FLOOR

UNIT NO.	PLAN TYPE	AREA
101	PLAN D1-M	1267 SF
102	PLAN D1	1267 SF
103	PLAN B1	792 SF
104	PLAN B1	792 SF
105	PLAN B1	792 SF
106	PLAN B1	792 SF
108	PLAN B1	792 SF
110	PLAN A1	668 SF
112	PLAN D2	1748 SF
114	PLAN B1	792 SF
115	PLAN B2	717 SF
116	PLAN B2	846 SF
118	PLAN B2	846 SF
119	PLAN D3	1143 SF
120	PLAN B2	846 SF
121	PLAN F1	1540 SF
122	PLAN D1-M	1267 SF

16 FIRST FLOOR PLAN
3/32" = 1'-0"



GENERAL PLAN NOTES

- BUILDING DIMENSIONS ARE TO OUTSIDE FACE OF STUD OR MASONRY WALLS UNLESS OTHERWISE NOTED.
- WINDOW & DOOR LOCATION DIMENSIONS ARE TO CENTERLINE OF WINDOW/DOOR UNLESS OTHERWISE NOTED. CONTRACTOR SHALL VERIFY ALL ROUGH OPENINGS WITH MANUFACTURER.
- VERIFY ALL STRUCTURAL MEMBER SIZE, SPACING, REINFORCING, AND BRACING WITH STRUCTURAL DRAWINGS.
- ALL WOOD EXPOSED TO THE EXTERIOR OR IN OPENINGS & CLEARANCE REQUIREMENTS WITH MANUFACTURER.
- VERIFY ALL WINDOW, DOOR, TUB, SHOWER, FIREPLACE, APPLIANCE, EQUIPMENT, ETC. ROUGH OPENINGS & CLEARANCE REQUIREMENTS WITH MANUFACTURER.
- PROVIDE SOUND BATT INSULATION AT ALL WALLS SURROUNDING BATHROOMS, LAUNDRY ROOMS/ CLOSETS, MECHANICAL ROOMS/ CLOSETS, AND OTHER PLUMBING WALLS.
- PROVIDE BLOCKING AT ALL GRAB BAR LOCATIONS - INCLUDING LOCATIONS OF FUTURE GRAB BARS & SEATS IN BATHROOMS DESIGNATED AS ACCESSIBLE.
- PROVIDE FIREBLOCKING PER 2015 IBC 718.2.1 - TYPICAL THROUGHOUT ENTIRE BUILDING.
- FIELD VERIFY ALL CABINERY LAYOUTS AND COORDINATE WITH THE DIMENSIONAL REQUIREMENTS OF ALL APPLIANCES & FIXTURES. PROVIDE FINISHED END PANELS AT ALL EXPOSED CABINERY ENDS.
- CAULK AT PERIMETER OF ALL TUB & SHOWER ENCLOSURES. CAULK AT PERIMETER OF ALL COUNTERTOP BACKSPASHES & SIDESPLASHES.
- INSTALL FIXTURES, ACCESSORIES, ETC. ACCORDING TO THE MOUNTING HEIGHT SCHEDULE.
- ALL WINDOWS & PATIO DOORS SHALL BE AS SPECIFIED IN THE SCOPE SPECIFICATIONS AND AS INDICATED ON THE EXTERIOR MATERIAL AND WINDOW SCHEDULES.

UNIT SCHEDULE - SECOND FLOOR

UNIT NO.	PLAN TYPE	AREA
201	PLAN D1-M	1267.57
202	PLAN D1	1267.57
203	PLAN B1	792.57
204	PLAN B1	792.57
205	PLAN B1-M	796.57
206	PLAN B1	792.57
208	PLAN B1	792.57
210	PLAN A1	600.57
212	PLAN D2	1264.57
214	PLAN B1	792.57
215	PLAN D4	979.57
216	PLAN B2	846.57
217	PLAN B1	792.57
218	PLAN B2	846.57
219	PLAN B1	792.57
220	PLAN B2	846.57
221	PLAN F1	1510.57
222	PLAN D1-M	1267.57

16 SECOND FLOOR PLAN
3/32" = 1'-0"



JLA
ARCHITECTS

MADISON : MILWAUKEE
jla-ap.com

JLA PROJECT NUMBER: XX-XXXX-XX

MAPLE GROVE DRIVE
RESIDENTIAL
APARTMENTS

UDC INITIAL

PROGRESS DOCUMENTS

These documents reflect progress and intent and may be subject to change, including additional detail. These are not final construction documents and should not be used for final bidding or construction-related purposes.

DATE OF ISSUANCE FEBRUARY 3, 2020

REVISION SCHEDULE

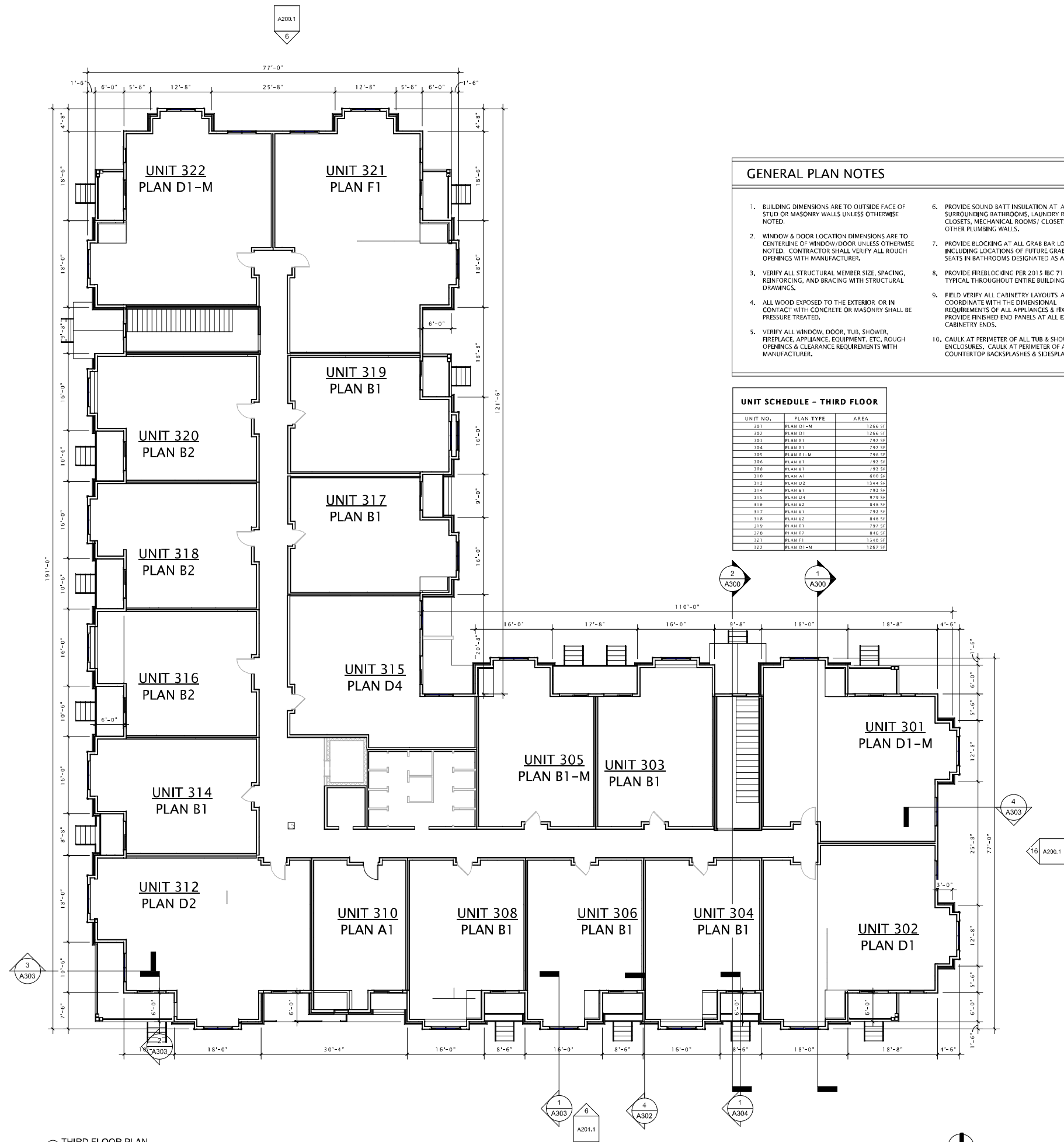
Mark	Description	Date
------	-------------	------

SHEET TITLE

SECOND FLOOR
PLAN

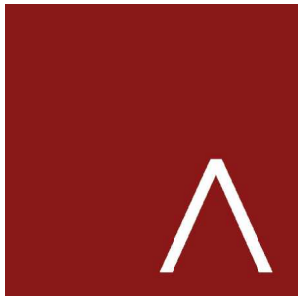
SHEET NUMBER

A-A102



GENERAL PLAN NOTES

- BUILDING DIMENSIONS ARE TO OUTSIDE FACE OF STUD OR MASONRY WALLS UNLESS OTHERWISE NOTED.
- WINDOW & DOOR LOCATION DIMENSIONS ARE TO CENTERLINE OF WINDOW/DOOR UNLESS OTHERWISE NOTED. CONTRACTOR SHALL VERIFY ALL ROUGH OPENINGS WITH MANUFACTURER.
- VERIFY ALL STRUCTURAL MEMBER SIZE, SPACING, REINFORCING, AND BRACING WITH STRUCTURAL DRAWINGS.
- ALL WOOD EXPOSED TO THE EXTERIOR OR IN CONTACT WITH CONCRETE OR MASONRY SHALL BE PRESSURE TREATED.
- VERIFY ALL WINDOW, DOOR, TUB, SHOWER, FIREPLACE, APPLIANCE, EQUIPMENT, ETC. ROUGH OPENINGS & CLEARANCE REQUIREMENTS WITH MANUFACTURER.
- PROVIDE SOUND BATT INSULATION AT ALL WALLS SURROUNDING BATHROOMS, LAUNDRY ROOMS/ CLOSETS, MECHANICAL ROOMS/ CLOSETS, AND OTHER PLUMBING WALLS.
- PROVIDE BLOCKING AT ALL GRAB BAR LOCATIONS - INCLUDING LOCATIONS OF FUTURE GRAB BARS & SEATS IN BATHROOMS DESIGNATED AS ACCESSIBLE.
- PROVIDE FIREBLOCKING PER 2015 IBC 718.2.1 - TYPICAL THROUGHOUT ENTIRE BUILDING.
- FIELD VERIFY ALL CABINETRY LAYOUTS AND COORDINATE WITH THE DIMENSIONAL REQUIREMENTS OF ALL APPLIANCES & FIXTURES. PROVIDE FINISHED END PANELS AT ALL EXPOSED CABINETRY ENDS.
- CAULK AT PERIMETER OF ALL TUB & SHOWER ENCLOSURES. CAULK AT PERIMETER OF ALL COUNTERTOP BACKSPASHES & SIDESPLASHES.
- INSTALL FIXTURES, ACCESSORIES, ETC. ACCORDING TO THE MOUNTING HEIGHT SCHEDULE.
- ALL WINDOWS & PATIO DOORS SHALL BE AS SPECIFIED IN THE SCOPE SPECIFICATIONS AND AS INDICATED ON THE EXTERIOR MATERIAL AND WINDOW SCHEDULES.



JLA
ARCHITECTS

MADISON : MILWAUKEE
jla-ap.com

JLA PROJECT NUMBER: XX-XXXX-XX

MAPLE GROVE DRIVE
RESIDENTIAL
APARTMENTS

UDC INITIAL

PROGRESS DOCUMENTS

These documents reflect progress and intent and may be subject to change, including additional detail. These are not final construction documents and should not be used for final bidding or construction-related purposes.

DATE OF ISSUANCE FEBRUARY 3, 2020

REVISION SCHEDULE

Mark	Description	Date
------	-------------	------

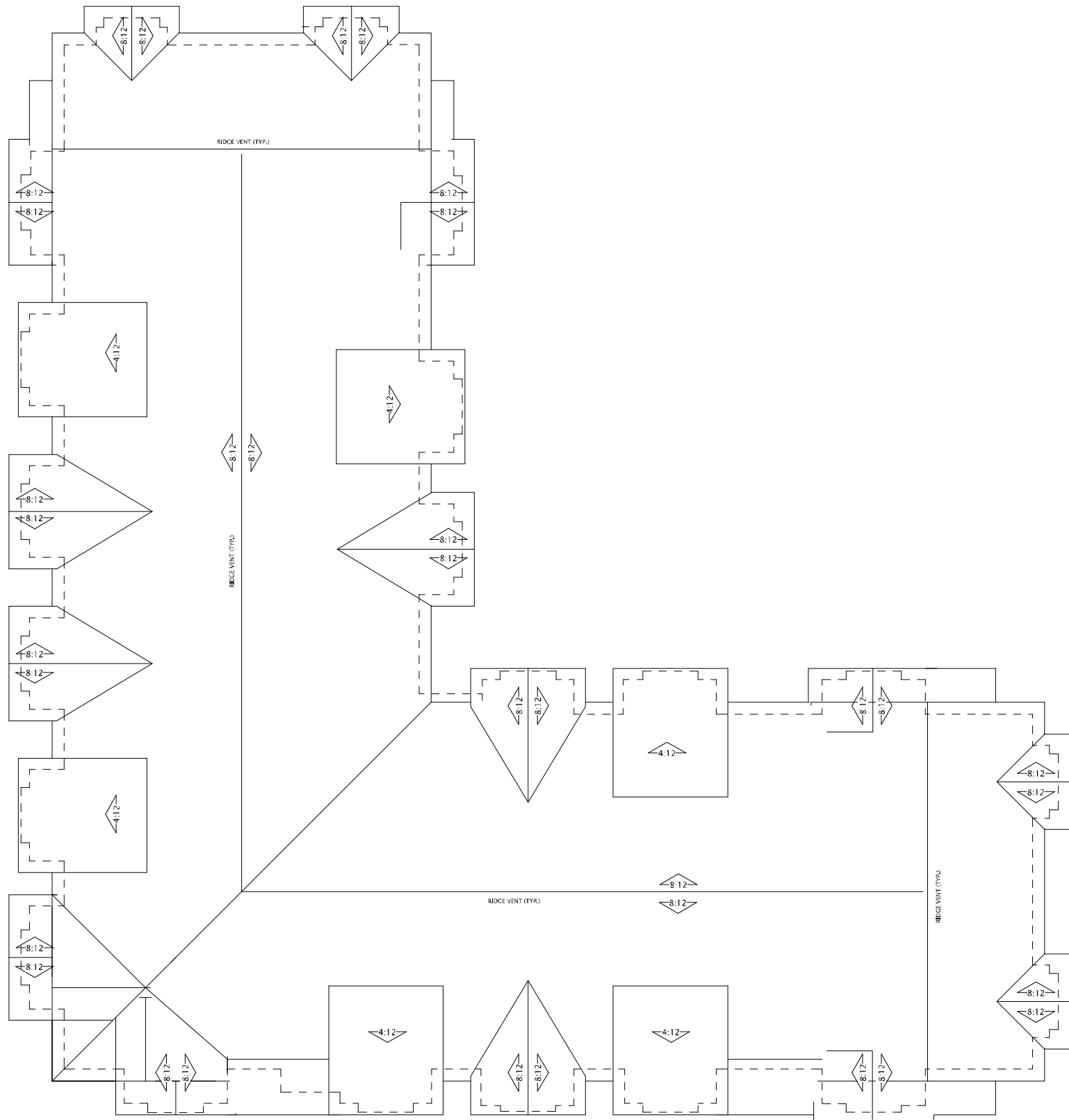
SHEET TITLE

THIRD FLOOR PLAN

SHEET NUMBER

A-A103

16 THIRD FLOOR PLAN
3/32" = 1'-0"



JLA
ARCHITECTS

MADISON : MILWAUKEE
jla-ap.com

JLA PROJECT NUMBER: XX-XXXX-XX

MAPLE GROVE DRIVE RESIDENTIAL APARTMENTS

UDC INITIAL

PROGRESS DOCUMENTS

These documents reflect progress and intent and may be subject to change, including additional detail. These are not final construction documents and should not be used for final bidding or construction-related purposes.

DATE OF ISSUANCE FEBRUARY 3, 2020

REVISION SCHEDULE		
Mark	Description	Date

SHEET TITLE

ROOF PLAN

SHEET NUMBER

A-A104



⑥ A - Elevation South
1/8" = 1'-0"



①⑥ A - Elevation West
1/8" = 1'-0"



JLA
ARCHITECTS

MADISON : MILWAUKEE
jla-ap.com

JLA PROJECT NUMBER: XX-XXXX-XX

MAPLE GROVE DRIVE
RESIDENTIAL
APARTMENTS

UDC INITIAL

PROGRESS DOCUMENTS

These documents reflect progress and intent and may be subject to change, including additional detail. These are not final construction documents and should not be used for final bidding or construction-related purposes.

DATE OF ISSUANCE FEBRUARY 3, 2020

REVISION SCHEDULE

Mark	Description	Date
------	-------------	------

SHEET TITLE

SKETCHUP
ELEVATIONS

SHEET NUMBER

A-A200



⑥ A - Elevation North
1/8" = 1'-0"



①⑥ A - Elevation East
1/8" = 1'-0"



JLA
ARCHITECTS

MADISON : MILWAUKEE
jla-ap.com

JLA PROJECT NUMBER: XX-XXXX-XX

MAPLE GROVE DRIVE
RESIDENTIAL
APARTMENTS

UDC INITIAL

PROGRESS DOCUMENTS

These documents reflect progress and intent and may be subject to change, including additional detail. These are not final construction documents and should not be used for final bidding or construction-related purposes.

DATE OF ISSUANCE FEBRUARY 3, 2020

REVISION SCHEDULE

Mark	Description	Date
------	-------------	------

SHEET TITLE

SKETCHUP
ELEVATIONS

SHEET NUMBER

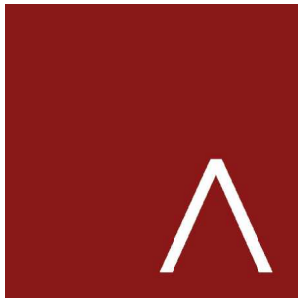
A-A201



6 PERSPECTIVE
1/8" = 1'-0"



16 PERSPECTIVE
1/8" = 1'-0"



JLA
ARCHITECTS

MADISON : MILWAUKEE
jla-ap.com

JLA PROJECT NUMBER: XX-XXXX-XX

MAPLE GROVE DRIVE
RESIDENTIAL
APARTMENTS

UDC INITIAL

PROGRESS DOCUMENTS

These documents reflect progress and intent and may be subject to change, including additional detail. These are not final construction documents and should not be used for final bidding or construction-related purposes.

DATE OF ISSUANCE FEBRUARY 3, 2020

REVISION SCHEDULE

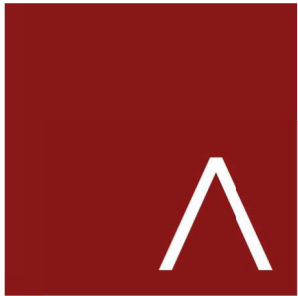
Mark	Description	Date
------	-------------	------

SHEET TITLE

SKETCHUP
PERSPECTIVES

SHEET NUMBER

A-A202



JLA
ARCHITECTS

MADISON : MILWAUKEE
jla-ap.com

JLA PROJECT NUMBER: XX-XXXX-XX

MAPLE GROVE ROAD
STACKED FLATS

UDC INITIAL

PROGRESS DOCUMENTS

These documents reflect progress and intent and may be subject to change, including additional detail. These are not final construction documents and should not be used for final bidding or construction-related purposes.

DATE OF ISSUANCE FEBRUARY 3, 2020

REVISION SCHEDULE

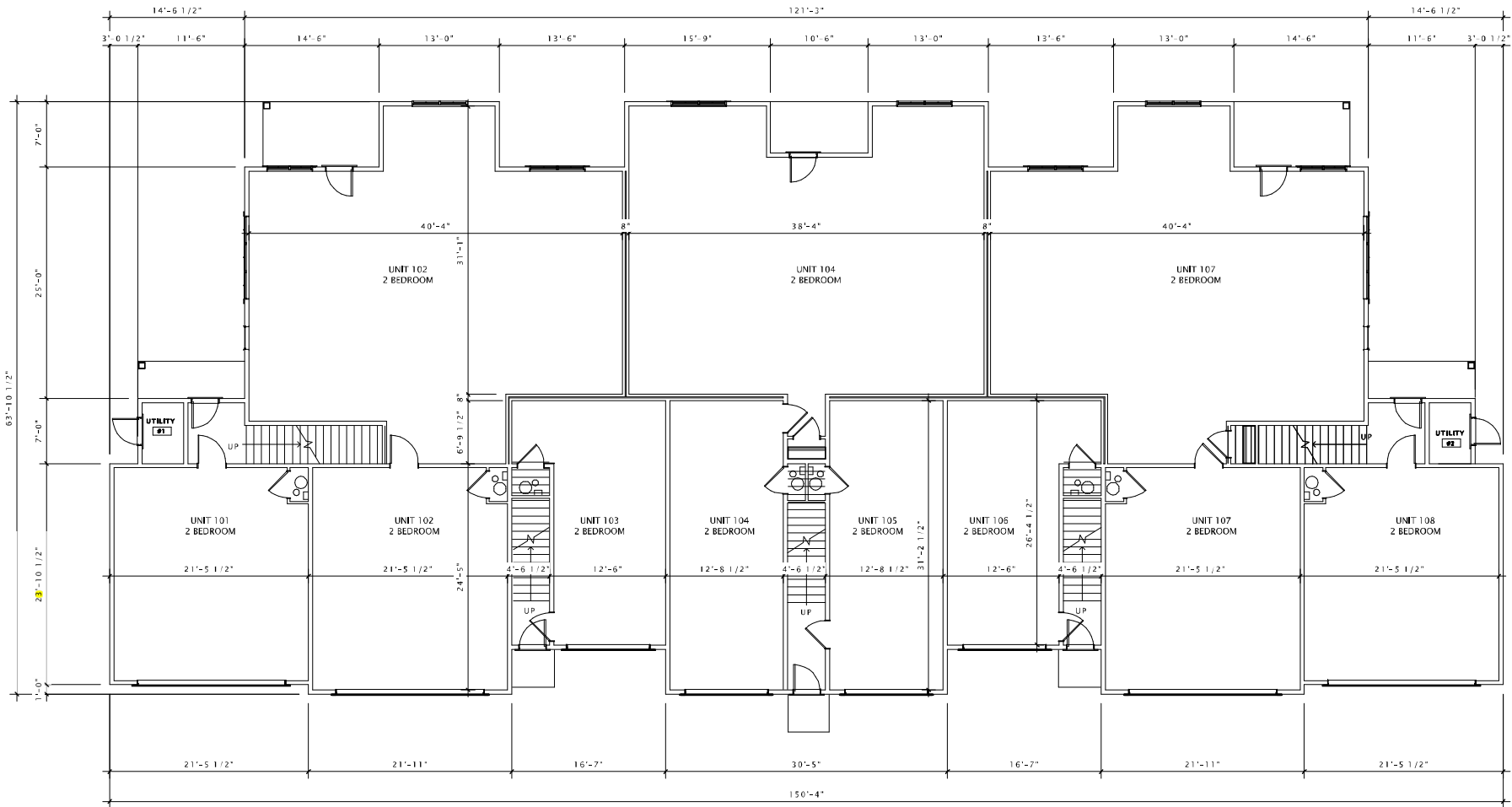
Mark	Description	Date
------	-------------	------

SHEET TITLE

FIRST FLOOR PLAN

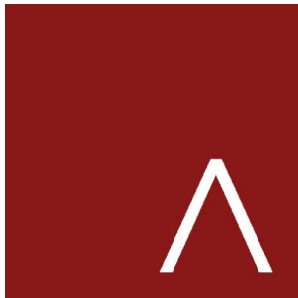
SHEET NUMBER

S-A101



① FIRST FLOOR PLAN
1/8" = 1'-0"





JLA
ARCHITECTS

MADISON : MILWAUKEE
jla-ap.com

JLA PROJECT NUMBER: XX-XXXX-XX

MAPLE GROVE ROAD
STACKED FLATS

UDC INITIAL

PROGRESS DOCUMENTS

These documents reflect progress and intent and may be subject to change, including additional detail. These are not final construction documents and should not be used for final bidding or construction-related purposes.

DATE OF ISSUANCE FEBRUARY 3, 2020

REVISION SCHEDULE

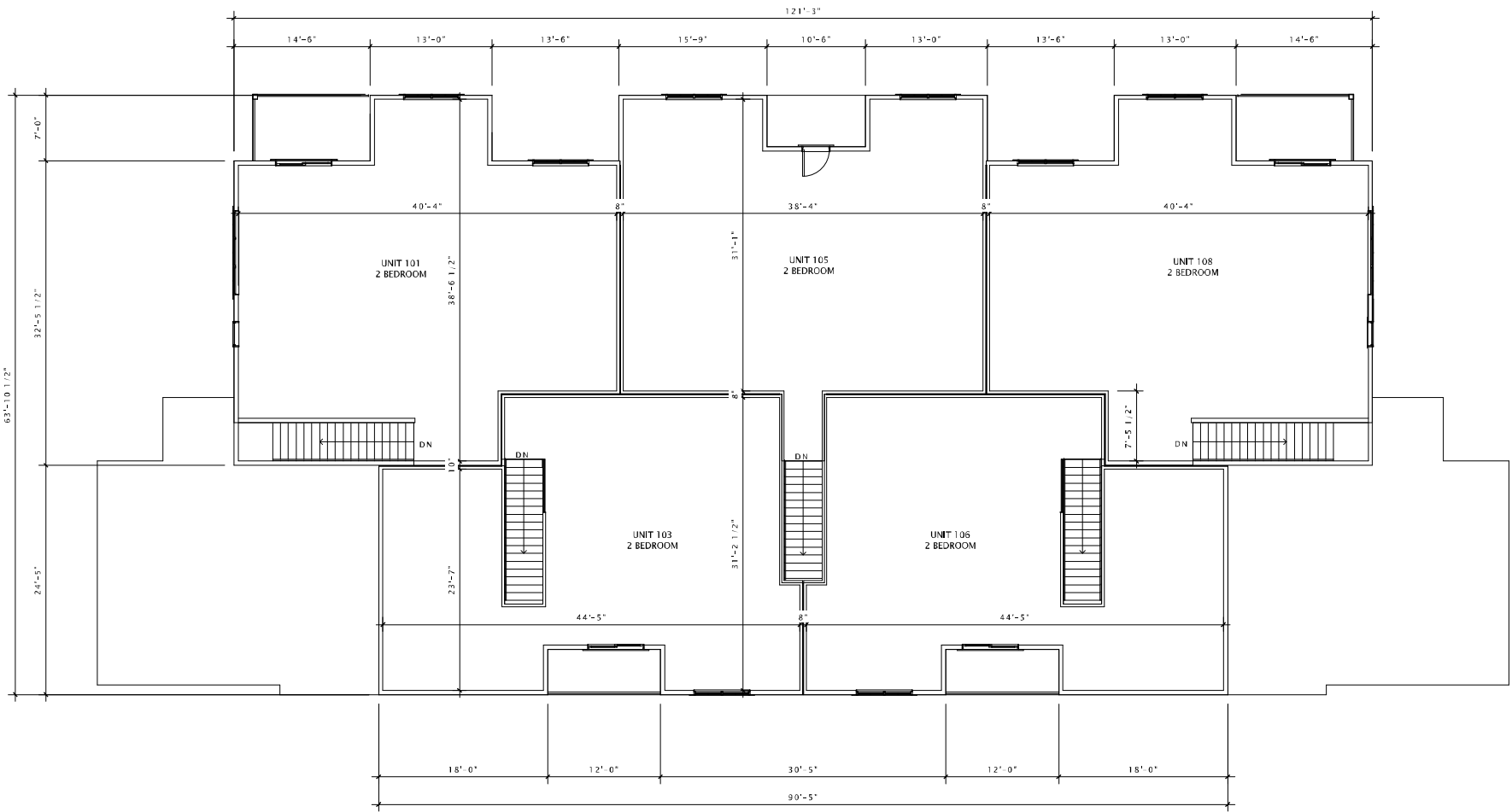
Mark	Description	Date
------	-------------	------

SHEET TITLE

SECOND FLOOR
PLAN

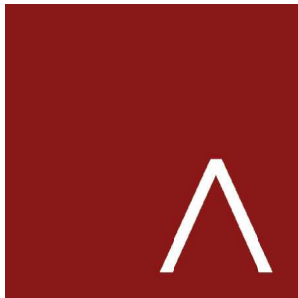
SHEET NUMBER

S-A102



① SECOND FLOOR PLAN
1/8" = 1'-0"





JLA
ARCHITECTS

MADISON : MILWAUKEE
jla-ap.com

JLA PROJECT NUMBER: XX-XXXX-XX

MAPLE GROVE ROAD
STACKED FLATS

UDC INITIAL

PROGRESS DOCUMENTS

These documents reflect progress and intent and may be subject to change, including additional detail. These are not final construction documents and should not be used for final bidding or construction-related purposes.

DATE OF ISSUANCE FEBRUARY 3, 2020

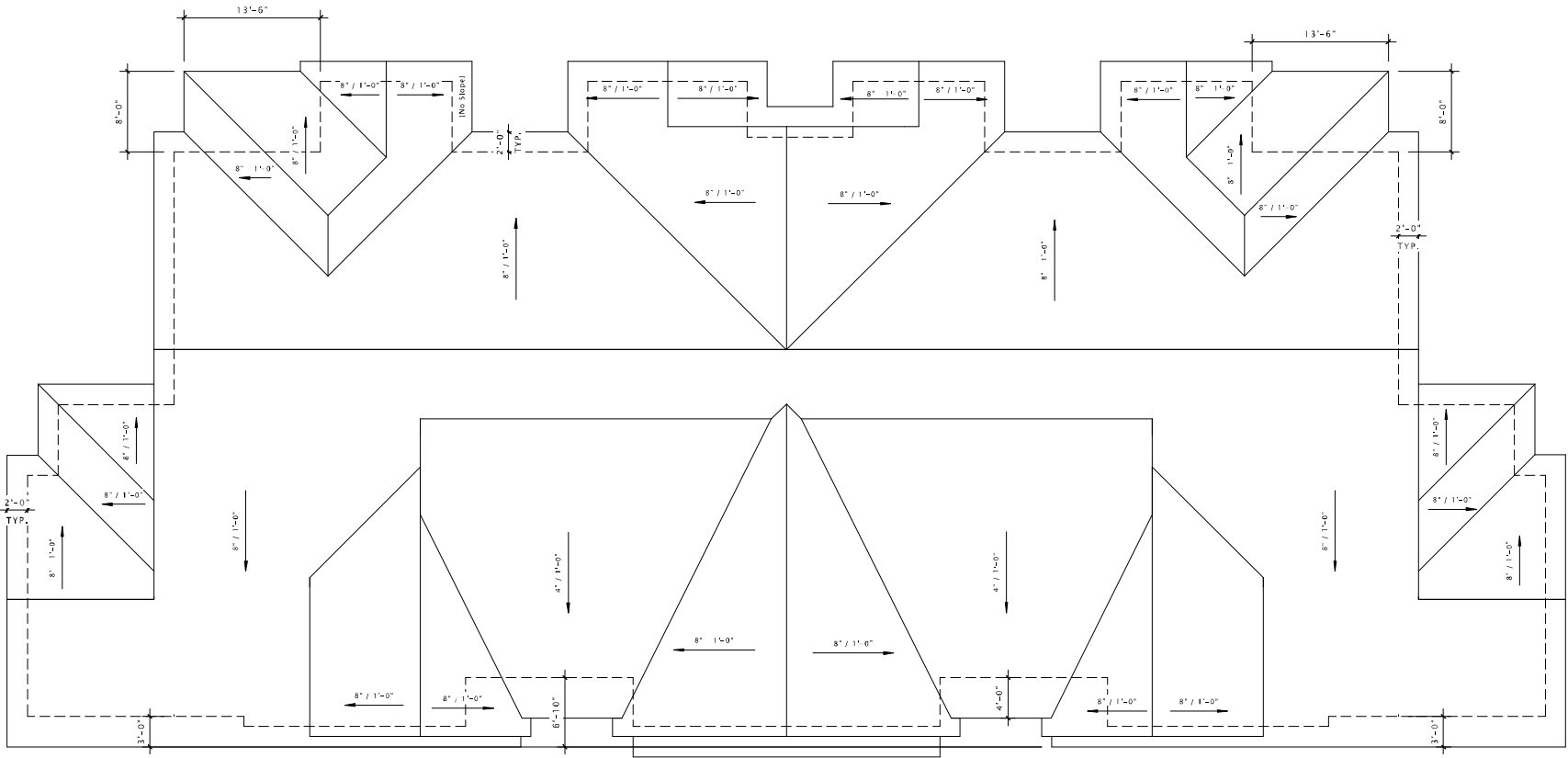
REVISION SCHEDULE		
Mark	Description	Date

SHEET TITLE

ROOF PLAN

SHEET NUMBER

S-A103



1 ROOF PLAN
1/8" = 1'-0"

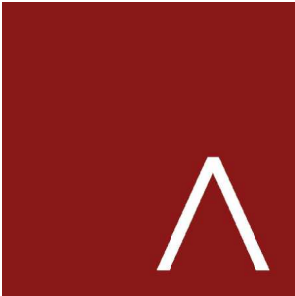




⑥ North Elevation
3/16" = 1'-0"



①⑥ West Elevation
3/16" = 1'-0"



JLA
ARCHITECTS

MADISON : MILWAUKEE
jla-ap.com

JLA PROJECT NUMBER: 17-1018

MAPLE GROVE ROAD STACKED FLATS

UDC INITIAL

PROGRESS DOCUMENTS

These documents reflect progress and intent and may be subject to change, including additional detail. These are not final construction documents and should not be used for final bidding or construction-related purposes.

DATE OF ISSUANCE FEBRUARY 3, 2020

REVISION SCHEDULE

Mark	Description	Date
------	-------------	------

SHEET TITLE

SKETCHUP
ELEVATIONS

SHEET NUMBER

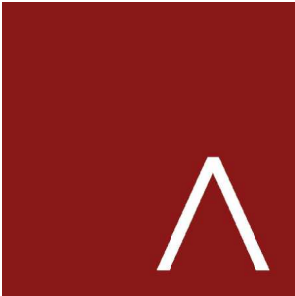
S-A200



⑥ South Elevation
3/16" = 1'-0"



⑩ East Elevation
3/16" = 1'-0"



JLA
ARCHITECTS

MADISON : MILWAUKEE
jla-ap.com

JLA PROJECT NUMBER: 17-1018

MAPLE GROVE ROAD
STACKED FLATS

UDC INITIAL

PROGRESS DOCUMENTS

These documents reflect progress and intent and may be subject to change, including additional detail. These are not final construction documents and should not be used for final bidding or construction-related purposes.

DATE OF ISSUANCE FEBRUARY 3, 2020

REVISION SCHEDULE

Mark	Description	Date
------	-------------	------

SHEET TITLE

SKETCHUP
ELEVATIONS

SHEET NUMBER

S-A201



6 PERSPECTIVE
1/8" = 1'-0"



16 PERSPECTIVE
1/8" = 1'-0"



JLA
ARCHITECTS

MADISON : MILWAUKEE
jla-ap.com

JLA PROJECT NUMBER: XX-XXXX-XX

MAPLE GROVE DRIVE
RESIDENTIAL
STACKED FLATS

UDC INITIAL

PROGRESS DOCUMENTS

These documents reflect progress and intent and may be subject to change, including additional detail. These are not final construction documents and should not be used for final bidding or construction-related purposes.

DATE OF ISSUANCE FEBRUARY 3, 2020

REVISION SCHEDULE

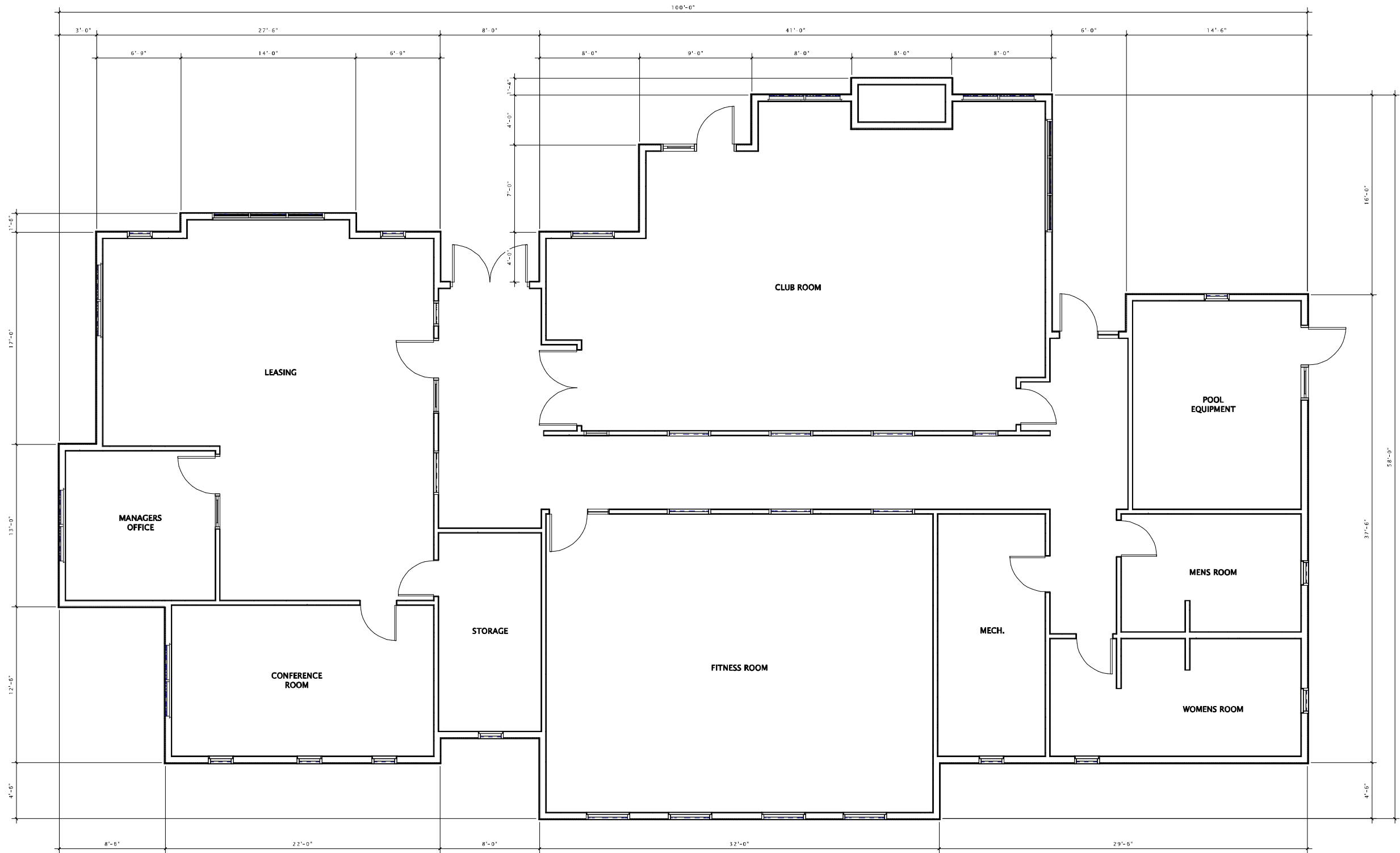
Mark	Description	Date
------	-------------	------

SHEET TITLE

SKETCHUP
PERSPECTIVE

SHEET NUMBER

SF-A202



16 FIRST FLOOR PLAN
1/4" = 1'-0"



JLA
ARCHITECTS

MADISON : MILWAUKEE
jla-ap.com

JLA PROJECT NUMBER: XX-XXXX-XX

MAPLE GROVE DRIVE CLUBHOUSE

UDC INITIAL

PROGRESS DOCUMENTS

These documents reflect progress and intent and may be subject to change, including additional detail. These are not final construction documents and should not be used for final bidding or construction-related purposes.

DATE OF ISSUANCE FEBRUARY 3, 2020

REVISION SCHEDULE

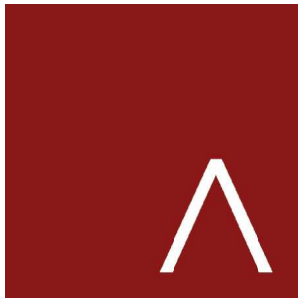
Mark	Description	Date
------	-------------	------

SHEET TITLE

FIRST FLOOR PLAN

SHEET NUMBER

CH-A101



JLA
ARCHITECTS

MADISON : MILWAUKEE
jla-ap.com

JLA PROJECT NUMBER: XX-XXXX-XX

MAPLE GROVE DRIVE
CLUBHOUSE

UDC INITIAL

PROGRESS DOCUMENTS

These documents reflect progress and intent and may be subject to change, including additional detail. These are not final construction documents and should not be used for final bidding or construction-related purposes.

DATE OF ISSUANCE FEBRUARY 3, 2020

REVISION SCHEDULE		
Mark	Description	Date

SHEET TITLE

SKETCHUP
ELEVATIONS

SHEET NUMBER

CH-A200



⑥ C - Elevation North
3/16" = 1'-0"



⑥ C - Elevation West
3/16" = 1'-0"



VINYL SHAKE SIDING (COLOR #2)

6 C - Elevation South
3/16" = 1'-0"



16 C - Elevation East
3/16" = 1'-0"



JLA
ARCHITECTS

MADISON : MILWAUKEE
jla-ap.com

JLA PROJECT NUMBER: XX-XXXX-XX

MAPLE GROVE DRIVE
CLUBHOUSE

UDC INITIAL

PROGRESS DOCUMENTS

These documents reflect progress and intent and may be subject to change, including additional detail. These are not final construction documents and should not be used for final bidding or construction-related purposes.

DATE OF ISSUANCE FEBRUARY 3, 2020

REVISION SCHEDULE

Mark	Description	Date
------	-------------	------

SHEET TITLE

SKETCHUP
ELEVATIONS

SHEET NUMBER

CH-A201



6 PERSPECTIVE Club House
1/8" = 1'-0"



16 PERSPECTIVE Club House
1/8" = 1'-0"



JLA
ARCHITECTS

MADISON : MILWAUKEE
jla-ap.com

JLA PROJECT NUMBER: XX-XXXX-XX

MAPLE GROVE DRIVE CLUBHOUSE

UDC INITIAL

PROGRESS DOCUMENTS

These documents reflect progress and intent and may be subject to change, including additional detail. These are not final construction documents and should not be used for final bidding or construction-related purposes.

DATE OF ISSUANCE FEBRUARY 3, 2020

REVISION SCHEDULE

Mark	Description	Date
------	-------------	------

SHEET TITLE

SKETCHUP
PERSPECTIVES

SHEET NUMBER

CH-A202