

Garibaldi Mexican Restaurant LLC, Business Plan

117 S. Butler Street Madison, Wisconsin 53703

Phone Number – 608-467-7733

Email – TBD

Website – TBD

Social Media – Facebook, Twitter, Instagram, Snapchat

Garibaldi Mexican Restaurant will be open to the public during the following business hours:

Sunday – Thursday: 11:00am – 9:00pm

Friday and Saturday: 11:00am-10:00pm

We will have a soft grand opening on Friday January 31st, 2020 for family and close friends with a ribbon cutting ceremony on the front steps of the establishment. Our restaurant cuisine will consist of authentic Mexican food. The restaurant menu will be handed in side by side with this business plan. Our drink menu will consist of famously hand-crafted margaritas, mojito's, and other Latin drinks. We will also carry an open bar for our patron's enjoyment. We will make hand crafted margaritas and guacamole from our custom-made cart that will be directly made at the customers table for their viewing and enjoyment.

We will be leasing the business at 117 S. Butler Street in Madison, Wisconsin formally known as Blue Agave Restaurant & Lounge. There are over 50 parking spots in a parking lot one block north of our business, as well as side street metered parking for our patrons.

The building capacity by fire code is at 104 persons and capacity will be enforced and managed by our management team led by Felipe Francisco Juan and Patricia Doroteo Crescencio, husband and wife respectively.

The kitchen and bar areas are up to city code and there will be some clean up and light remodeling to the building, other than that it will remain the way it currently is now.

We plan to employ one bartender, two to three waitresses/waiters, one busser persons, one dish washer, and Mr. Felipe Francisco will be the main chef in charge of the kitchen.

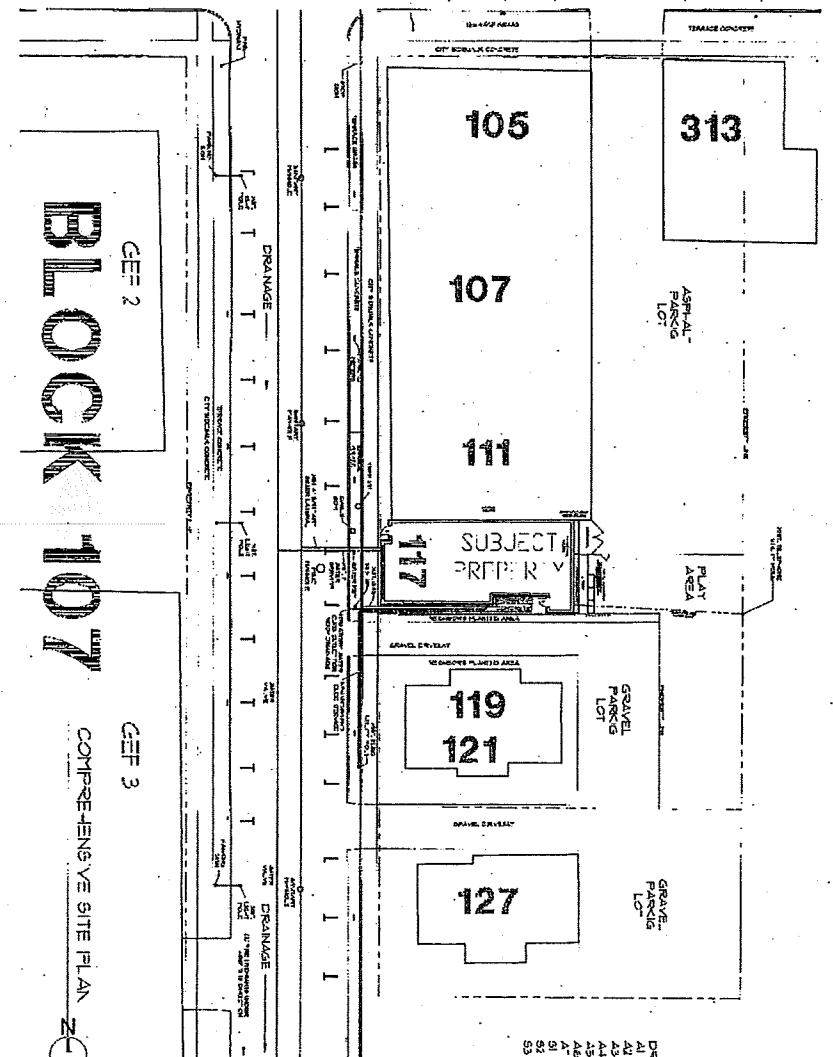
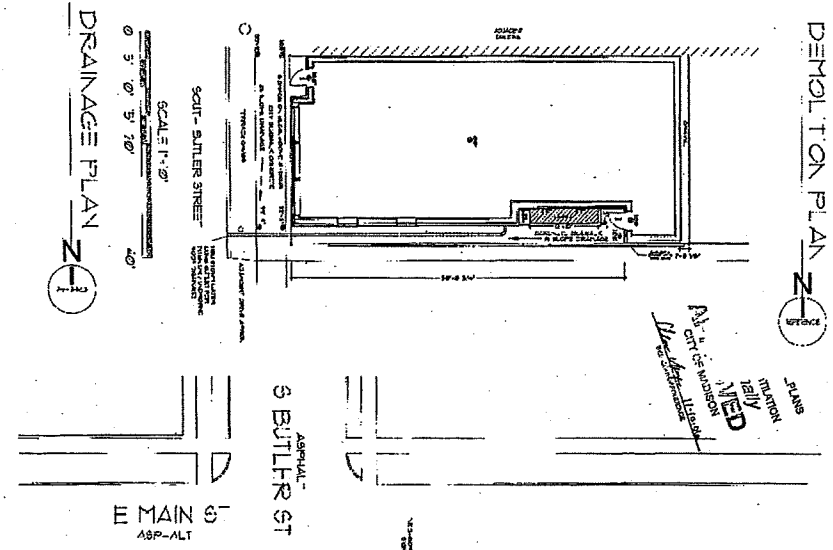
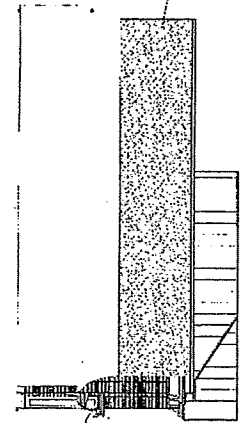
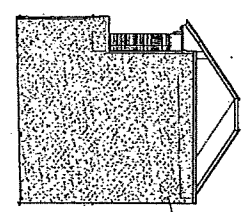
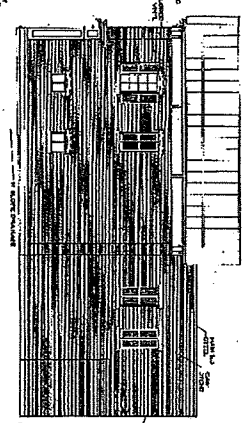
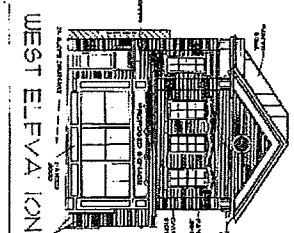
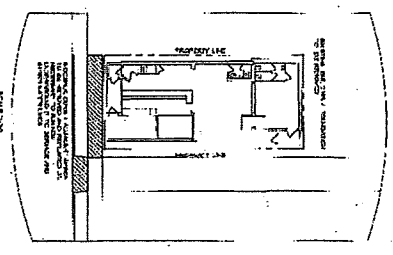
Garibaldi Mexican Restaurant will consist of traditional Mexican food. However, what will spread us apart from our competitors in the Madison market is that we will focus on keeping a fun atmosphere for everyone including families, which will consist of our hand-crafted drinks, birthday songs, Mexican music, and much more. Garibaldi Mexican Restaurant will target everyone from church members, families, politicians, businessmen/businesswomen, birthday parties, college students, etc.

We plan to attract many visitors from all over the state with our wide advertising plan we have put together which will include markets such as Wisconsin Dells, Milwaukee, Beloit, Beaver Dam, and other parts of Wisconsin.

We will have a casual dress code however we will turn away customers with improper clothing apparel or problemed guests.

Garibaldi Mexican Restaurant projected gross sales per year will be around the \$400,000 range. We will work very closely with the police department to make sure we are conducting business in an appropriate and safe manner for our patrons and neighbors.

We will also be active in our community for all downtown events and festivals such as Taste of Madison and parades. We will comply with all city ordinances, state statues, and state administrative codes by working very closely with city and state officials and listening to opinions or advice on how to run our business more properly and effectively.

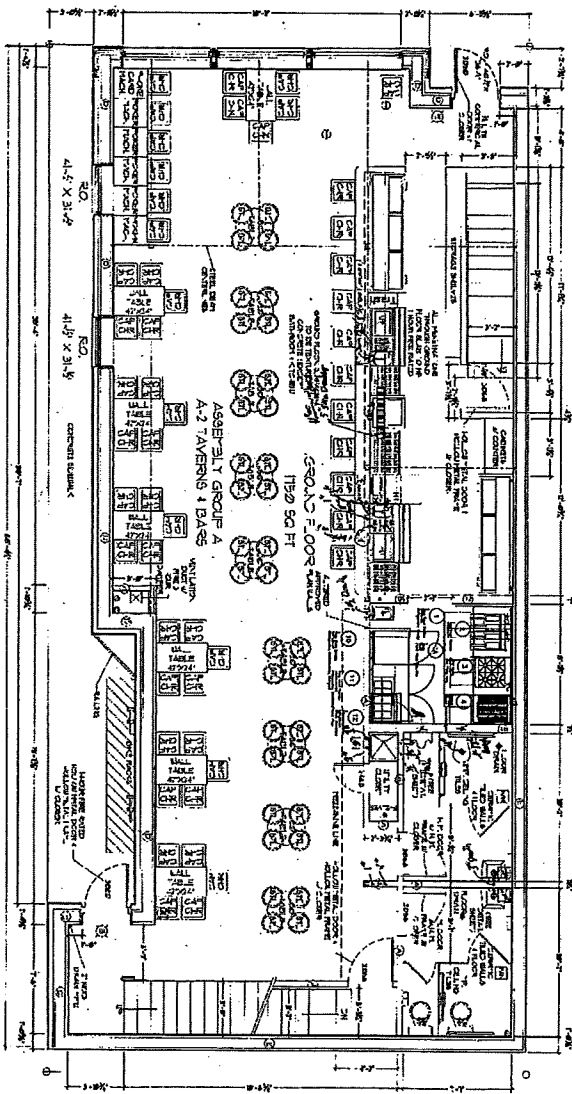
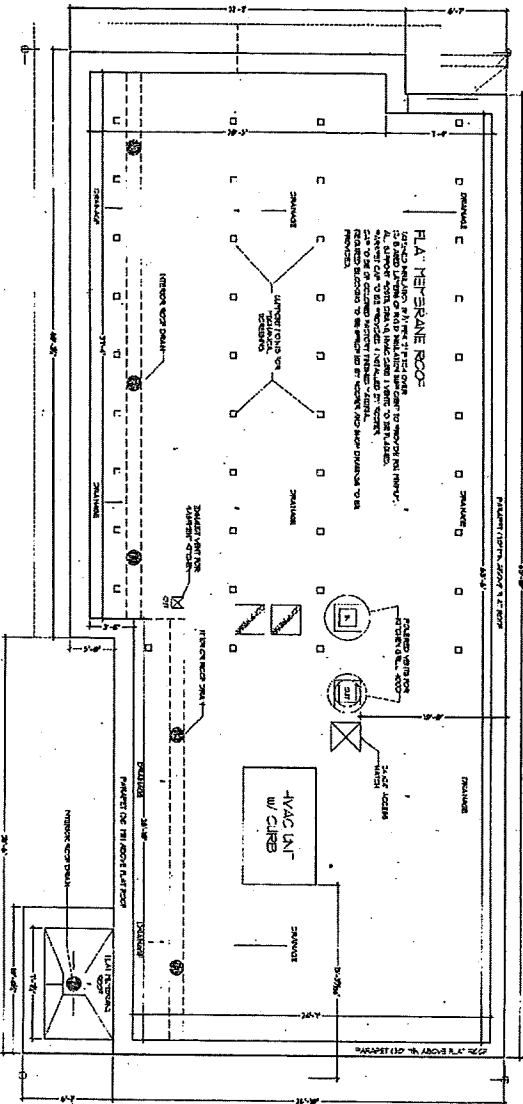
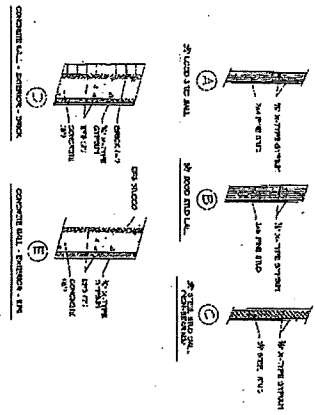
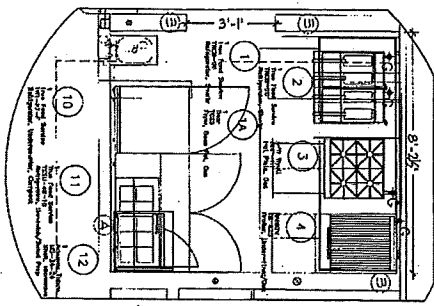


- DRAWING NO.:
- 41 SITE PLAN
 - 42 GROUND FLOOR PLAN
 - 43 TERRACE & SAN
 - 44 BASEMENT PLAN
 - 45 SECTION - (1-1)
 - 46 SECTION - (5-5)
 - 51 FOUNDATION PLAN
 - 52 ROOFING PLAN
 - 53 ROOF FLOOR PLAN



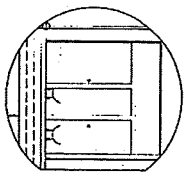
<p>ICON, LLC</p> <p>Project Designer: Eric W. Wagoner - Contract Administration 500 N. KANAWHA BLVD., SUITE 200 MADISON, WI 53706 PHONE (608) 253-1515 FAX (608) 253-6900</p>	<p>SEVERN ENGINEERING</p> <p>Structural Engineering • Building Design • Contract Administration 6944 SKIMMOLE CENTRE CT MADISON WI 53711 PHONE (608) 270-0083 FAX (608) 270-0084</p>
<p>DATE: 10/20/06</p> <p>PROJECT NO: 06-001</p> <p>DESIGNER: [Signature]</p> <p>SCALE: 1/8" = 1'-0"</p>	<p>DATE: 10/20/06</p> <p>PROJECT NO: 06-001</p> <p>DESIGNER: [Signature]</p> <p>SCALE: 1/8" = 1'-0"</p>

THIS DRAWING AND DESIGN ARE EXCLUSIVE PROPERTY OF THE PARTY NAMED IN THE TITLE BLOCK. IT REMAINS THE PROPERTY OF ICON, LLC AND MAY NOT BE REPRODUCED IN ANY MANNER WITHOUT WRITTEN CONSENT OF SEVERN ENGINEERING.

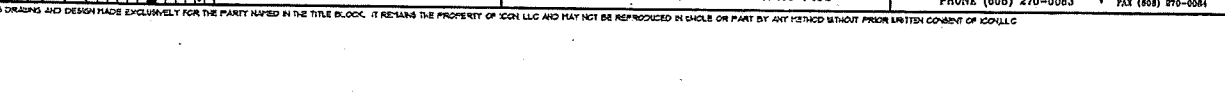
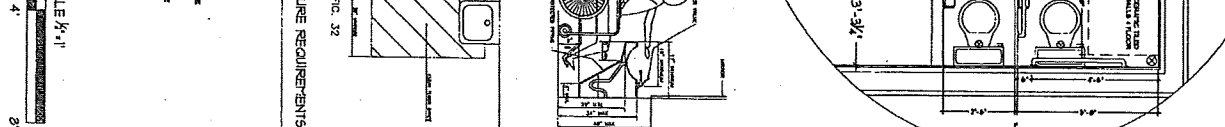
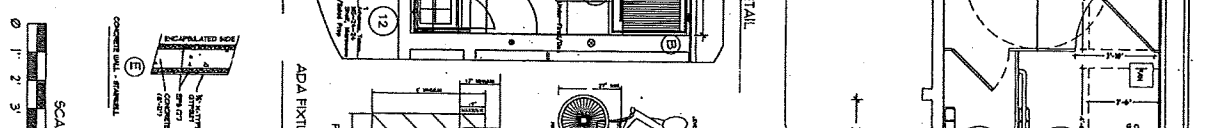
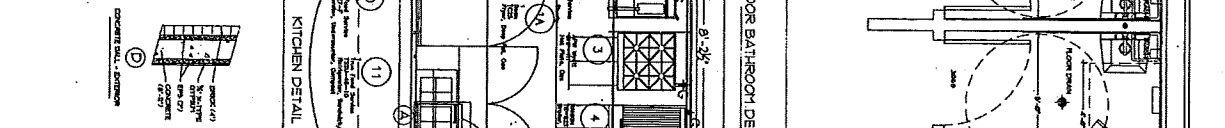
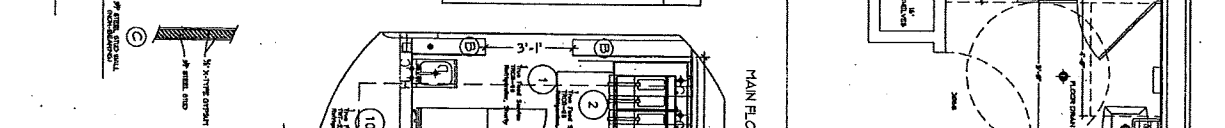
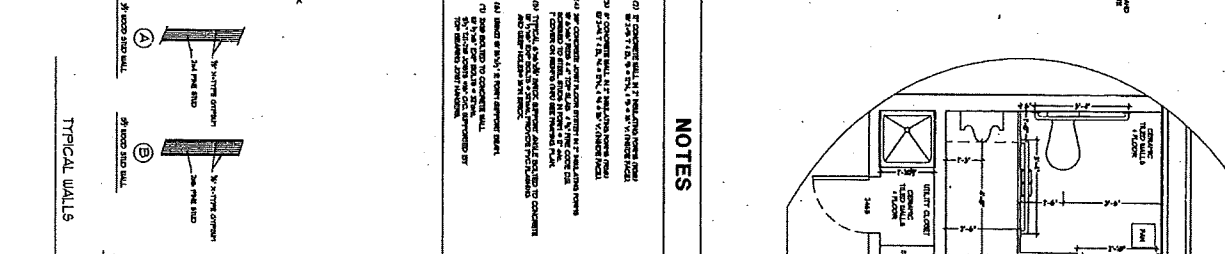
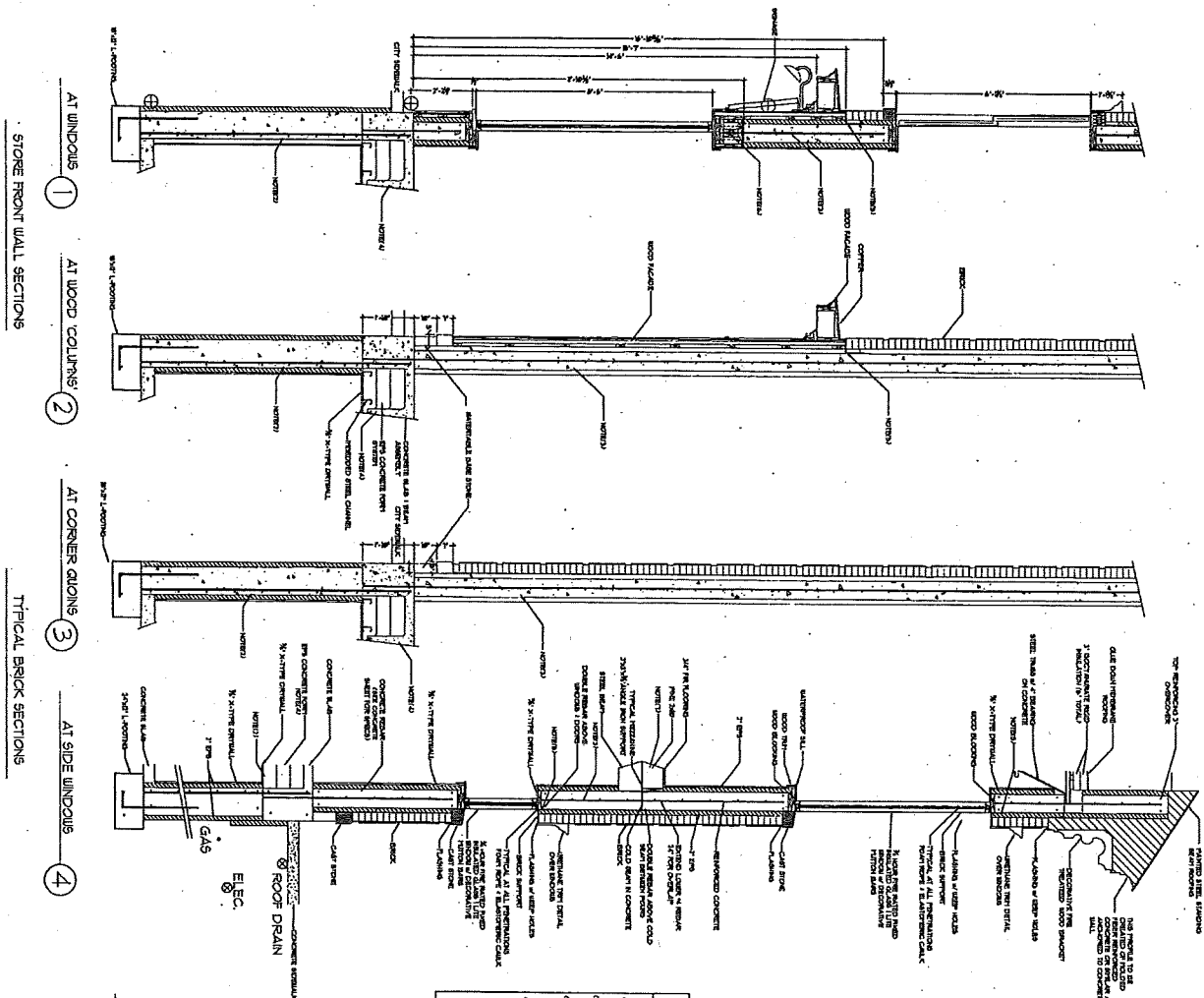


ROOF PLAN / MECHANICAL FOOTINGS

GROUND FLOOR PLAN

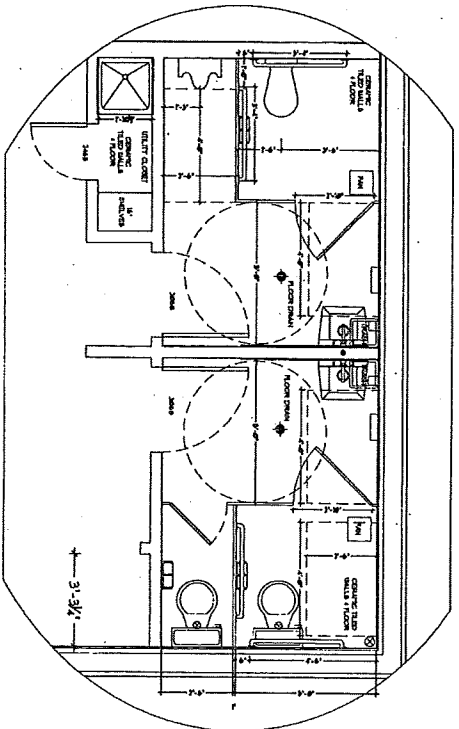
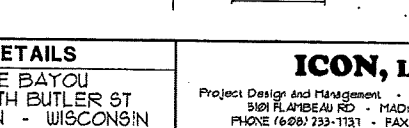
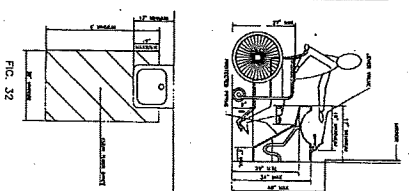
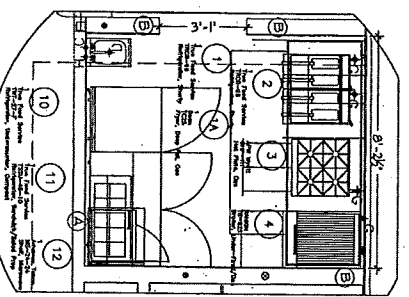


A2 PROJECT NO. SHEET NUMBER DATE: 6/20/02	GROUND / ROOF PLAN THE BAYO, 117 SOLT FILTER ST MADISON - WISCONSIN	ICON, LLC Project Design and Management - Contract Administration 508 FLAMBEAU RD - MADISON, WI 53703 PHONE (608) 233-1131 FAX (608) 233-6300	SEVERN ENGINEERING Structural Engineering - Building Design - Contract Administration 8844 SPRINGHOLE CENTRE CT MADISON WI 53711 PHONE (608) 270-0000 FAX (608) 270-0084
	© 2002 SEVERN AND DESIGN TRADES EXCLUSIVE. FOR THE PARTY OWNED IN THE TITLE BLOCK. IT REMAINS THE PROPERTY OF SEVERN AND MAY NOT BE REPRODUCED IN WHOLE OR PART BY ANY METHOD WITHOUT PERMISSION IN WRITING OF SEVERN.		



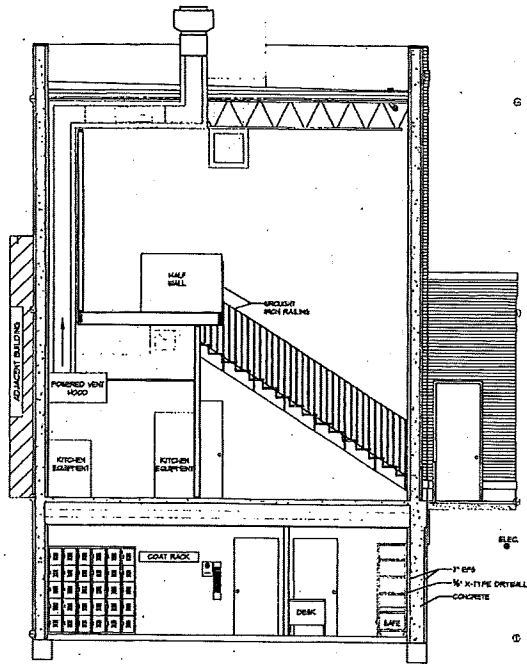
NOTES

- CONCRETE SHALL BE 3" REINFORCED CONCRETE WITH 3" MIN. CLEARANCE FROM ALL REINFORCEMENT.
- CONCRETE SHALL BE 3" REINFORCED CONCRETE WITH 3" MIN. CLEARANCE FROM ALL REINFORCEMENT.
- CONCRETE SHALL BE 3" REINFORCED CONCRETE WITH 3" MIN. CLEARANCE FROM ALL REINFORCEMENT.
- CONCRETE SHALL BE 3" REINFORCED CONCRETE WITH 3" MIN. CLEARANCE FROM ALL REINFORCEMENT.
- CONCRETE SHALL BE 3" REINFORCED CONCRETE WITH 3" MIN. CLEARANCE FROM ALL REINFORCEMENT.
- CONCRETE SHALL BE 3" REINFORCED CONCRETE WITH 3" MIN. CLEARANCE FROM ALL REINFORCEMENT.
- CONCRETE SHALL BE 3" REINFORCED CONCRETE WITH 3" MIN. CLEARANCE FROM ALL REINFORCEMENT.
- CONCRETE SHALL BE 3" REINFORCED CONCRETE WITH 3" MIN. CLEARANCE FROM ALL REINFORCEMENT.
- CONCRETE SHALL BE 3" REINFORCED CONCRETE WITH 3" MIN. CLEARANCE FROM ALL REINFORCEMENT.
- CONCRETE SHALL BE 3" REINFORCED CONCRETE WITH 3" MIN. CLEARANCE FROM ALL REINFORCEMENT.
- CONCRETE SHALL BE 3" REINFORCED CONCRETE WITH 3" MIN. CLEARANCE FROM ALL REINFORCEMENT.
- CONCRETE SHALL BE 3" REINFORCED CONCRETE WITH 3" MIN. CLEARANCE FROM ALL REINFORCEMENT.

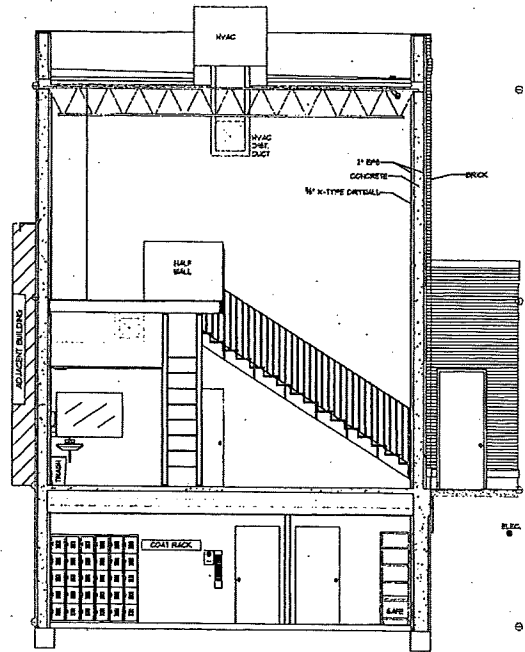


AS5	DATE: 1/1/08	ICON, LLC Project Design and Management • Contract Administration 5101 FLAMBEAU RD. - MADISON, WI 53705 PHONE (608) 233-1131 • FAX (608) 233-6500	SEVERN ENGINEERING Structural Engineering • Building Design • Contract Administration 6944 SEMINOLE CENTRE CT MADISON WI 53711 PHONE (608) 270-0083 • FAX (608) 270-0064
	PROJECT NO. 08-001		
	REVISIONS:		
	DESIGNED BY: [Name]		
DETAILS		THE BAYOU 117 SOUTH BUTLER ST MADISON - WISCONSIN	

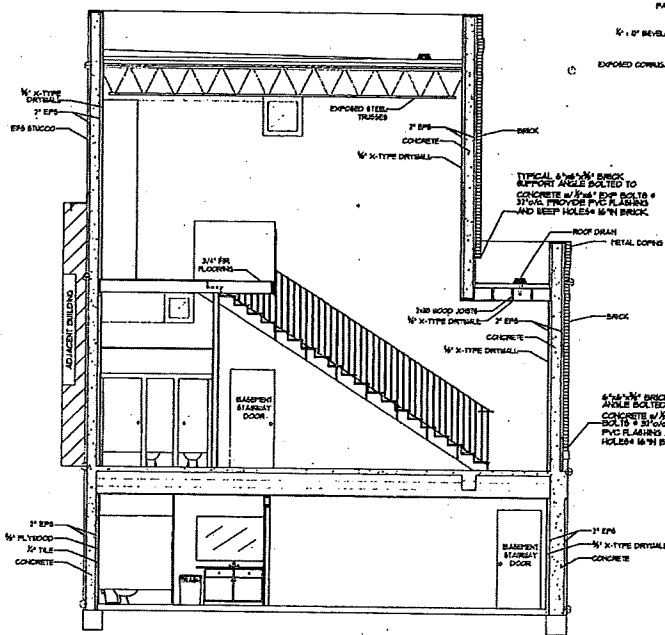
© THIS DRAWING AND DESIGN MADE EXCLUSIVELY FOR THE PARTY NAMED IN THE TITLE BLOCK. IT REMAINS THE PROPERTY OF ICON, LLC AND MAY NOT BE REPRODUCED IN WHOLE OR IN PART BY ANY METHOD WITHOUT PRIOR WRITTEN CONSENT OF ICON, LLC.



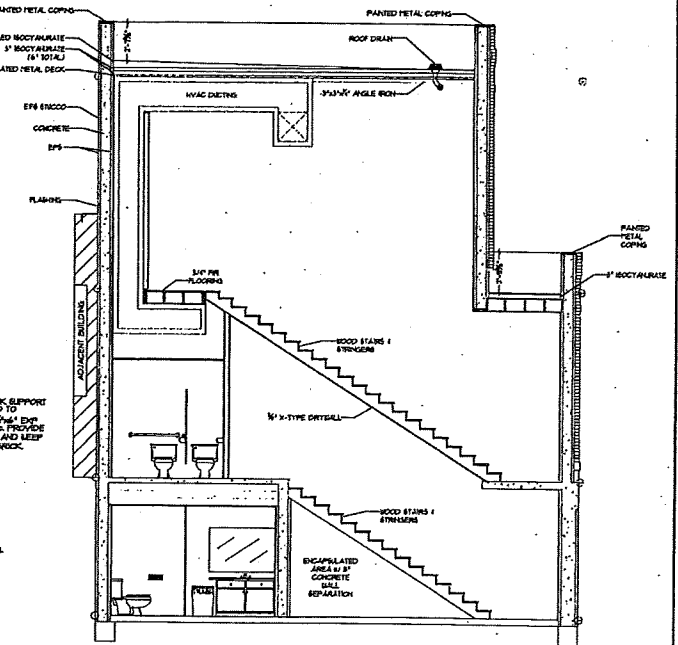
5



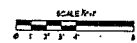
6



7



8



A7	DATE	10/16/04
	PROJECT NO.	104-00000
	SHEET NUMBER	104-00000-01
	DESIGNER	ICON, LLC

SECTIONS - (5 - 8)
THE BAYOU
 117 SOUTH BUTLER ST
 MADISON - WISCONSIN

ICON, LLC
 Project Design and Management - Contract Administration
 5101 FLAMBEAU RD - MADISON, WI 53705
 PHONE (608) 233-1131 - FAX (608) 233-6320

SEVERN ENGINEERING
 Structural Engineering • Building Design • Contract Administration
 6844 SEMINOLE CENTRE CT MADISON WI 53711
 PHONE (608) 270-0083 • FAX (608) 270-0084

© 1994 DRAWINGS AND DESIGN MADE EXCLUSIVELY FOR THE PARTY NAMED IN THE TITLE BLOCK. IT REMAINS THE PROPERTY OF ICON, LLC AND MAY NOT BE REPRODUCED IN WHOLE OR PART BY ANY METHOD WITHOUT PRIOR WRITTEN CONSENT OF ICON, LLC.

MEXICAN CUISINE

608.467.7733

5 BUTLER ST, MADISON, WI

BLUEAGAVEMADISON @BLUEAGAVEMADISON

WWW.BLUEAGAVEMADISON.COM

TACOS

(3) TACOS WITH YOUR CHOICE OF PROTEIN(S), SERVED WITH A SIDE OF CILANTRO, ONION, SALSA PICANTE, RICE AND BEANS. YOUR CHOICE OF FLOUR OR CORN TORTILLAS.

BASE PRICE 12.99

GRILLED STEAK
GRILLED CHICKEN
TINGA
PASTOR
CARNITAS

CHORIZO
VEGETARIAN
TILAPIA _____ ADD \$2
GRILLED SHRIMP _____ ADD \$3
MIX & MATCH _____ ADD \$2

FAJITAS

BUILD YOUR OWN

YOUR CHOICE OF PROTEIN BROUGHT TO YOUR TABLE SIZZLING. PAIRED WITH GRILLED BELL PEPPERS, ONIONS AND TOMATO. SERVED WITH GUACAMOLE, SOUR CREAM, LETTUCE, REFRIED BEANS, TRADITIONAL MEXICAN RICE, AND YOUR CHOICE OF FLOUR OR CORN TORTILLAS. BASE PRICE 15.45

» GRILLED CHICKEN
» GRILLED STEAK
» GRILLED SHRIMP (ADD \$3)
» CARNITAS
» CHORIZO
» MIX & MATCH (ADD \$2)

FAJITA NACHOS 11.95

GRILLED SLICED STEAK OR CHICKEN OVER CRISPY TORTILLA CHIPS, PAIRED WITH BELL PEPPERS, TOMATO, AND ONION. TOPPED WITH OUR SAVORY CHEESE DIP, SERVED WITH GUACAMOLE, SOUR CREAM, LETTUCE, JALAPEÑOS AND REFRIED BEANS.

QUESADILLA 11.85 FAJITA

LARGE FLOUR TORTILLA FILLED WITH YOUR CHOICE OF CHICKEN OR STEAK FAJITA, MELTED CHEESE AND BEANS. TOPPED WITH