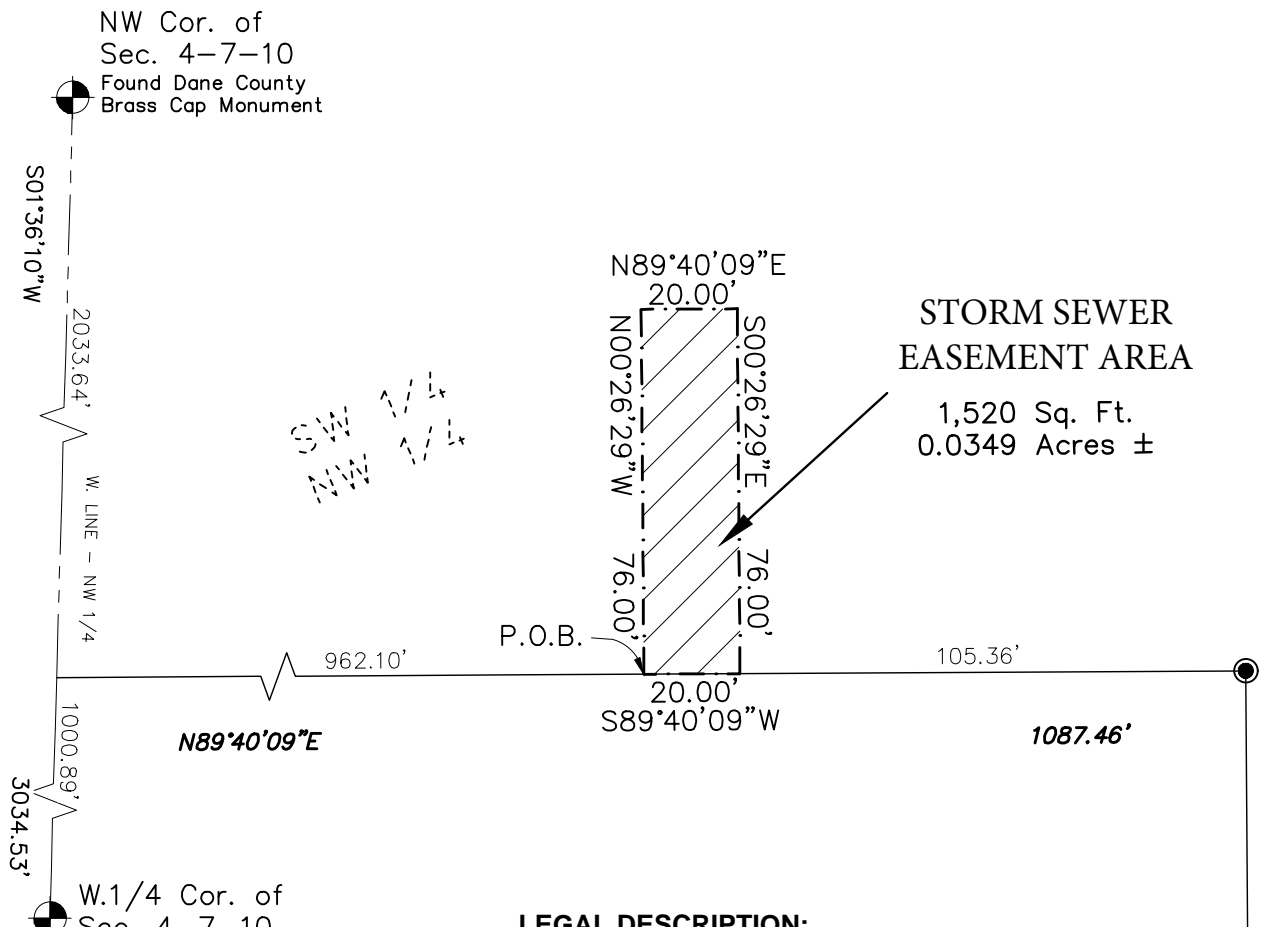


EXHIBIT B

Private Storm Sewer Easement Area

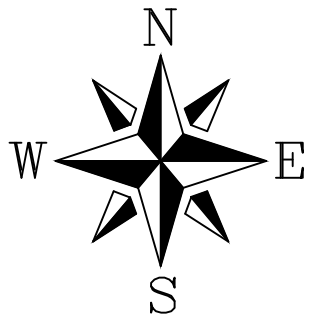


LEGAL DESCRIPTION:

A part of the Southwest 1/4 of the Northwest 1/4 of Section 4, Township 7 North, Range 10 East, City of Madison, Dane County, Wisconsin, being more particularly described as follows:

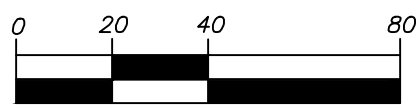
COMMENCING at a found Berntsen aluminum monument at the Northwest Corner said Section 4; thence, along the West line of the Northwest 1/4 of said Section 4, South 01°36'10" West, 2033.64 feet; thence North 89°40'09" East, 962.10 feet to a point on the common line between the Grantor and Grantee, also being the **POINT OF BEGINNING**; thence, North 00°26'29" West, 76.00 feet; thence North 89°40'09" East, 20.00 feet; thence South 00°26'29" East, 76.00 feet to a point on said common line; thence, along said common line, South 89°40'09" West, 20.00 feet to the **POINT OF BEGINNING**.

Said easement contains 1,520 square feet or 0.0349 acres, more or less, and is subject to all matters of record and/or fact.

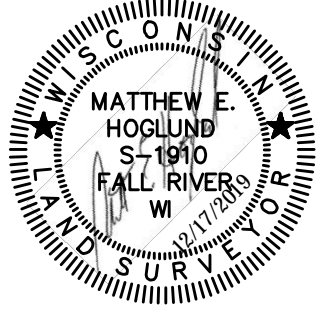


Bearings are referenced to the West line of the Northwest 1/4 of Section 4, which is measured to bear S01°36'10"W on the Dane County Coordinate System

GRAPHIC SCALE



(IN FEET)
1 inch = 40 ft.



LEGEND

- Existing Property Line
- - - Sectional Subdivision Line
- . - . - Proposed Easement Line
- 3/4" Iron Rebar Found

NON-EXCLUSIVE STORM SEWER EASEMENT
EASEMENT EXHIBIT
PROJECT NO. FC-14-19 SHEET 1 OF 1
DECEMBER 17, 2019
QUAM ENGINEERING, LLC
Residential and Commercial Site Design Consultants
www.quamengineering.com
4604 Siggelkow Road, Suite A - McFarland, Wisconsin 53558
Phone (608) 838-7750; Fax (608) 838-7752