

EXHIBIT B

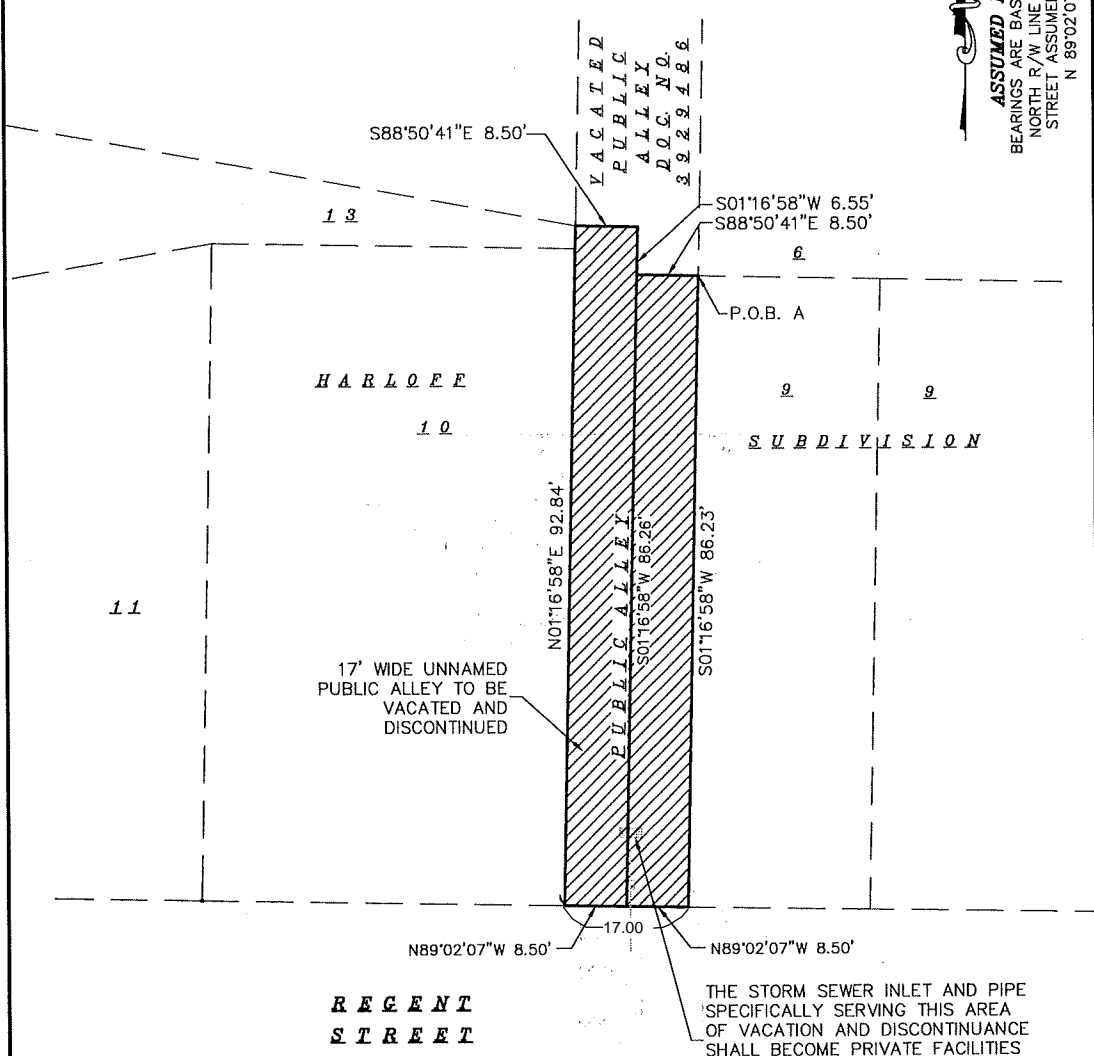
PUBLIC ALLEY VACATION AND DISCONTINUANCE

PART OF PUBLIC ALLEY, HARLOFF SUBDIVISION, AS RECORDED IN VOLUME 1 OF PLATS, ON PAGE 44, AS DOCUMENT NUMBER 222749A, DANE COUNTY REGISTRY, LOCATED IN THE SOUTHWEST QUARTER OF THE NORTHWEST QUARTER OF SECTION 23, TOWNSHIP 07 NORTH, RANGE 09 EAST, CITY OF MADISON, DANE COUNTY, WISCONSIN.



SCALE : ONE INCH = TWENTY FEET

ASSUMED NORTH
 BEARINGS ARE BASED UPON THE
 NORTH R/W LINE OF REGENT
 STREET ASSUMED TO BEAR
 N 89°02'07" W



SURVEYED FOR :
 RUSSELL KAHN

SURVEYED BY :

Burse

surveying & engineering

2801 International Lane, Suite 101
 Madison, WI 53704 608.250.9263
 Fax: 608.250.9266
 email: mburse@bse-inc.net
 www.bursesurveyengr.com

Date: October 10, 2019
 Plot View: public alley vacation and discontinuance
 BSE1961\dwg\BSE1961.DWG

SHEET 1 OF 1

Exhibit B