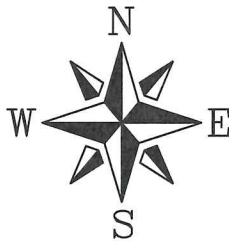
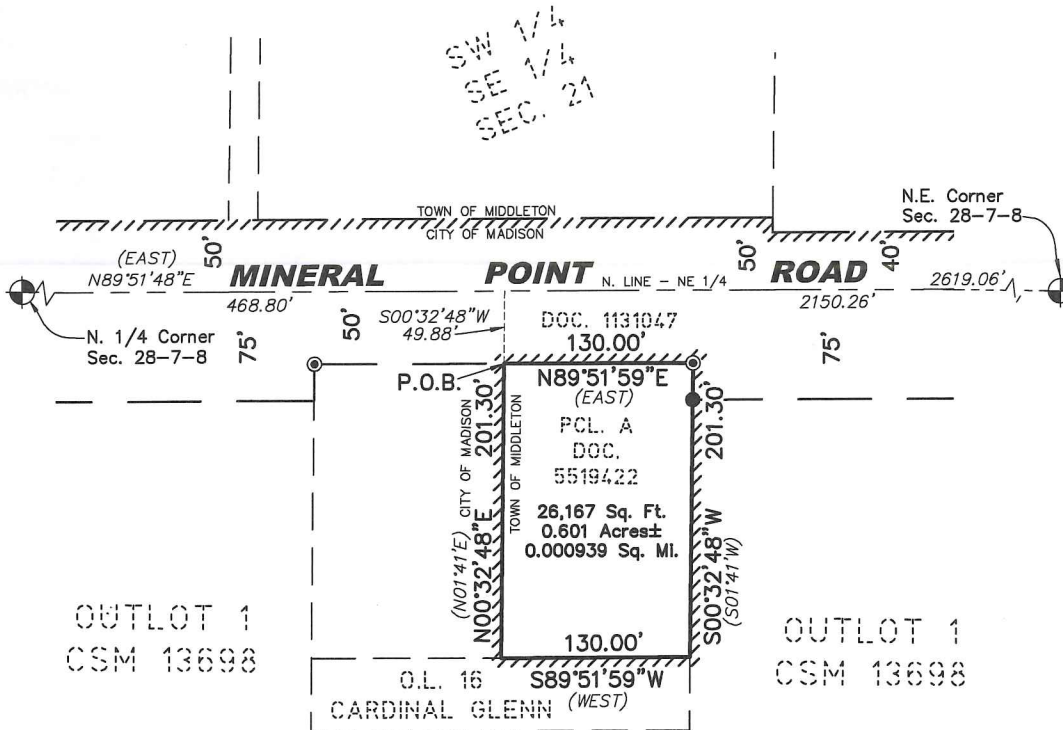


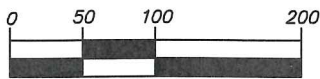
Scale Map

A part of the NW 1/4 of the NE 1/4 of Section 28, T.7N., R.8E., Town of Middleton, Dane County, Wisconsin



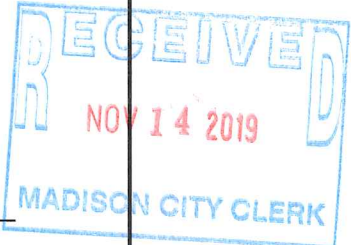
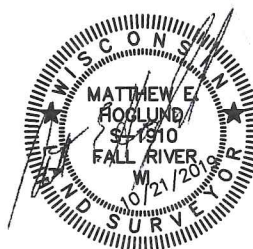
Bearings are referenced to the North line of the NW 1/4 of Section 28, which is recorded to bear N89°51'48"E on CSM No. 13698

GRAPHIC SCALE



(IN FEET)

NW 1/4
NE 1/4



LEGEND

- ⊙ 3/4" Iron Rebar Found
- 1-1/4" Iron Rebar Found
- - - Sectional Subdivision Line
- - - Plat or Deed Lines
- Existing R/W Line
- Attachment Boundary
- ▨ City of Madison Corporate Boundary

SEE SHEET 2 FOR LEGAL DESCRIPTION.

ATTACHMENT TO THE CITY OF MADISON

SCALE MAP

PROJECT NO. WE-13-19 SHEET 1 OF 2
OCTOBER 21, 2019

QUAM ENGINEERING, LLC
Residential and Commercial Site Design Consultants



www.quamengineering.com

4804 Siggelkow Road, Suite A - McFarland, Wisconsin 53558
Phone (608) 838-7750; Fax (608) 838-7752