

THE
MONTGOMERIE
ARCHITECTS
1444 LYNDAE AVENUE SOUTH, SUITE 100
MINNEAPOLIS, MINNESOTA 55425-1084
TEL: 612-338-7500 FAX: 612-338-2832
WWW.MONTGOMERIE.COM

COURTYARD
MADISON

3602 CROSSROADS DRIVE
MADISON
WISCONSIN

Prepared for:
MIDWEST LOGGING PARTNERS XII
1000 ABBOTT ROAD, SUITE 300
P.O. BOX 5094
MINNEAPOLIS, WI 55404

Date: 1/31/02

Drawn By: RM, DM, CF, CH, MA

Checked By: TL, GMT

Project Architect: DLP

Project Number: 200004A

Revisions & Addendums

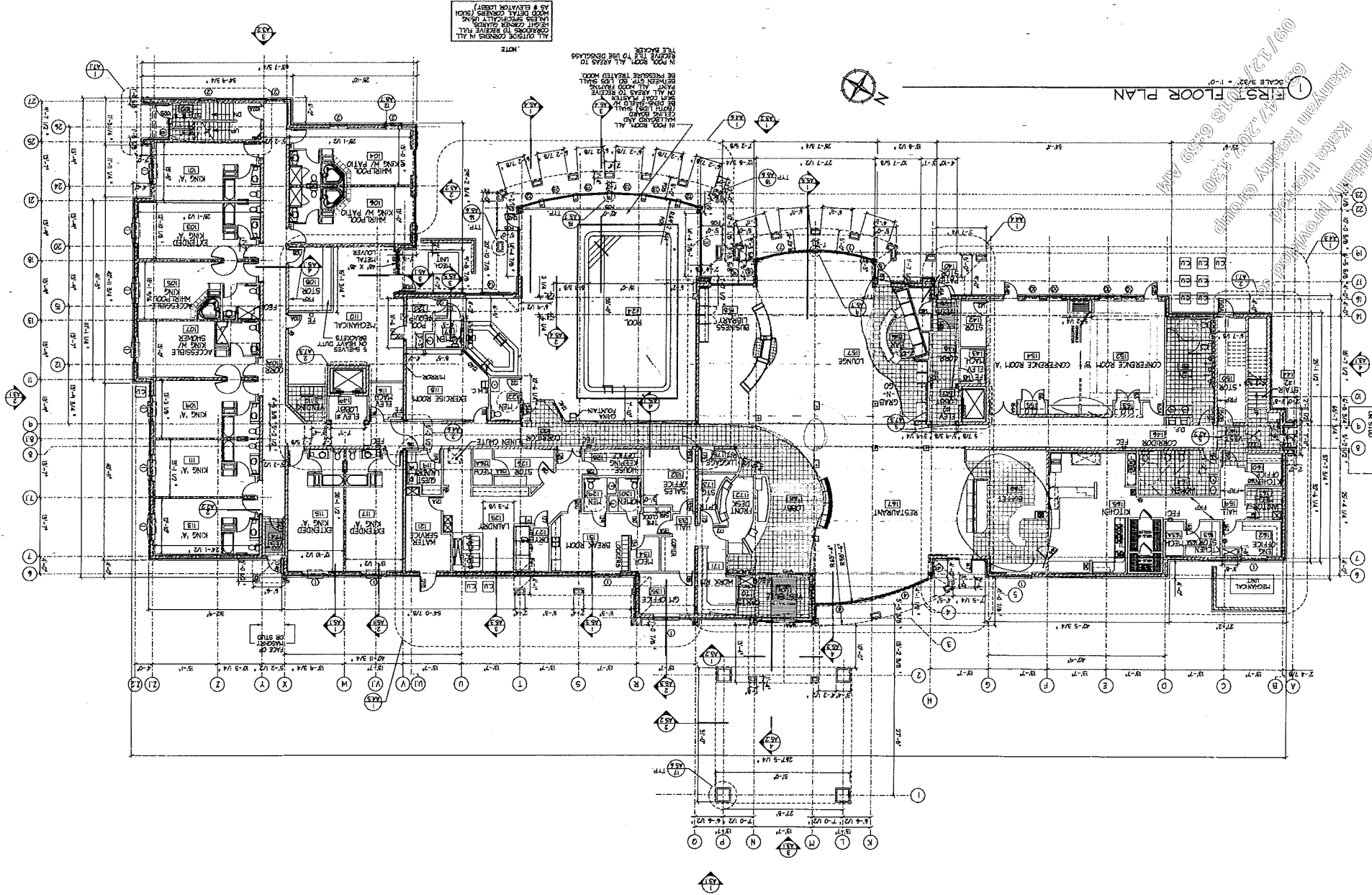
APPENDUM #4

3/20/02

COURTYARD MADISON

FIRST FLOOR

A.I.R.



FIRST FLOOR PLAN

SCALE: 3/32" = 1'-0"

09/12/12
47,200 sq. ft. (130)
Katie Heston
Bramblewood Realty Group
177,200 sq. ft. (130)