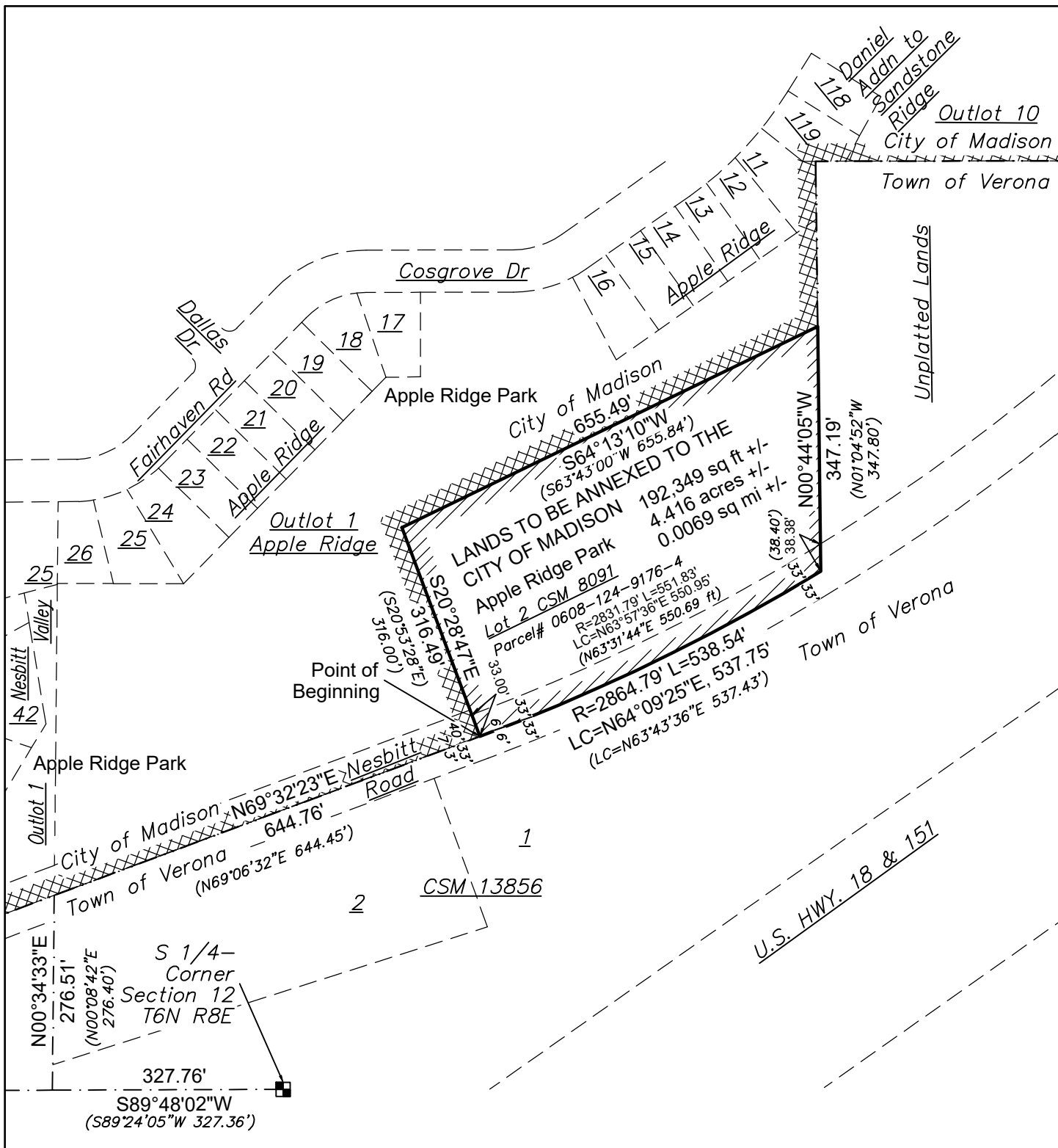


EXHIBIT B



**SCALE MAP: LANDS TO BE ANNEXED TO THE CITY OF MADISON
APPLE RIDGE PARK**

Lot 2 CSM 8091 & part of Nesbitt Rd, in the SW1/4 of SE1/4 of Section 12 T6N R8E Town of Verona, Dane County, WI Prepared Oct 29, 2019

<p>City of Madison Dept. of Public Works - Parks Div. City-County Building, Suite 104 210 Martin Luther King Jr. Blvd. Madison, WI 53703</p>	<p>Graphical Scale</p> <p>0 200 ft</p> <p>play MADISON PARKS</p>
--	---