



Planning Division

Heather Stouder, Director

215 Martin Luther King Jr. Blvd, Suite 017

P.O. Box 2985

Madison, Wisconsin 53701-2985

Phone: (608) 266-4635

Fax (608) 267-8739

www.cityofmadison.com

BACKGROUND

The City of Madison boundary includes the entirety of Lake Mendota and Lake Monona dating back to the original city Charter in 1856. Currently, the Census Bureau's municipal boundary mapping incorrectly indicates the northern one-third of Lake Mendota as being within the Town of Westport. Correspondingly, Dane County's ward mapping has Lake Mendota split into two wards, with the northern ward (Ward 5) belonging to the Town of Westport.

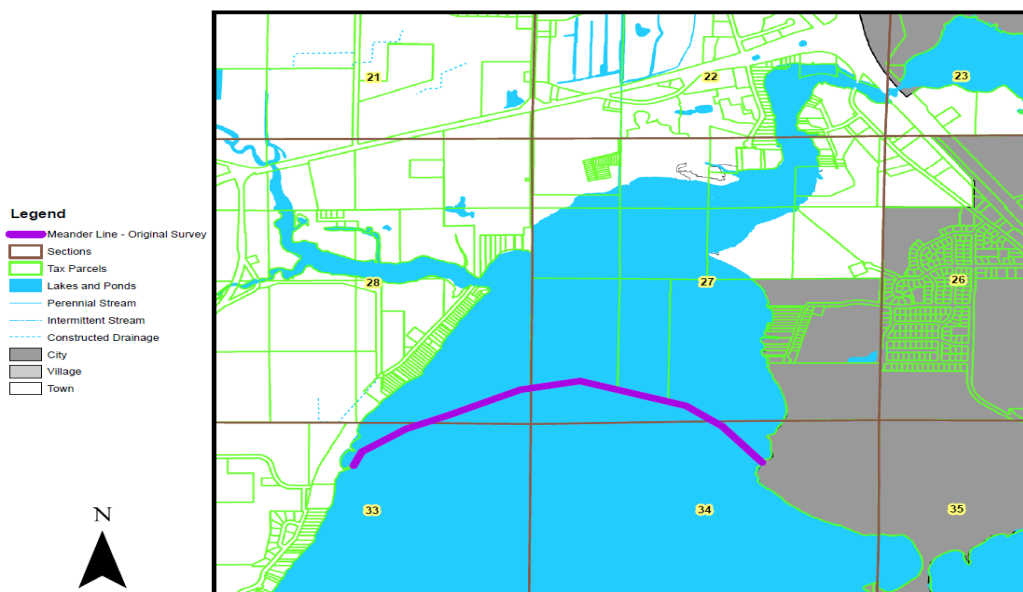
Dane County Land Information Office staff, with assistance from the Dane County Surveyor, City of Madison Engineering, and City of Madison Planning, has proposed a revised boundary line at the mouth of the Yahara River following the original surveyed boundary of Lake Mendota prior to the construction of the Tenney Dam.

This ordinance creates City of Madison Ward 147 for the northern portion of Lake Mendota. This will facilitate correction of Dane County's ward mapping and the Census Bureau's municipal boundary mapping to accurately indicate Lake Mendota as being within the City of Madison. This ward will contain no population, but will likely be aggregated with other areas during redistricting in 2021.

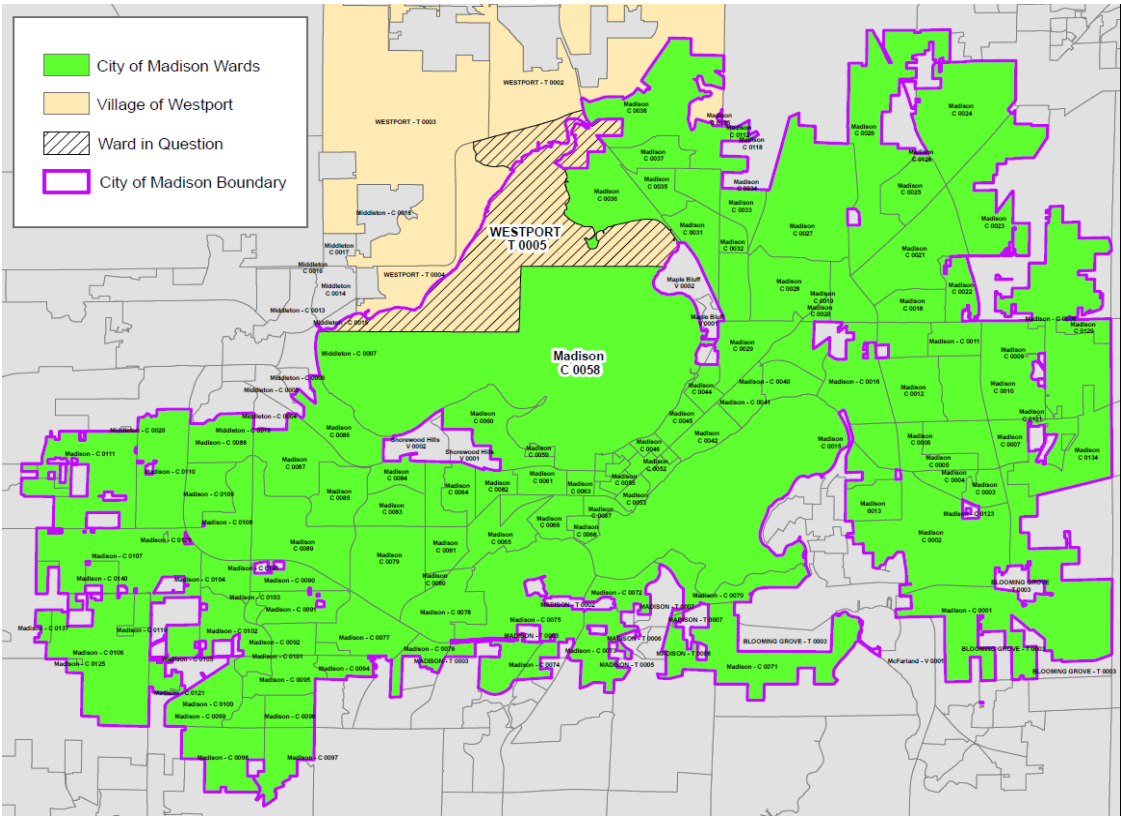
This ordinance also clarifies that existing City of Madison Ward 58 includes the southern portion of Lake Mendota.

Proposed Yahara River / Lake Mendota Boundary Line

City of Madison Boundary on Lake Mendota - Following Original Survey



Current Ward Boundaries



Proposed City of Madison Ward 147

