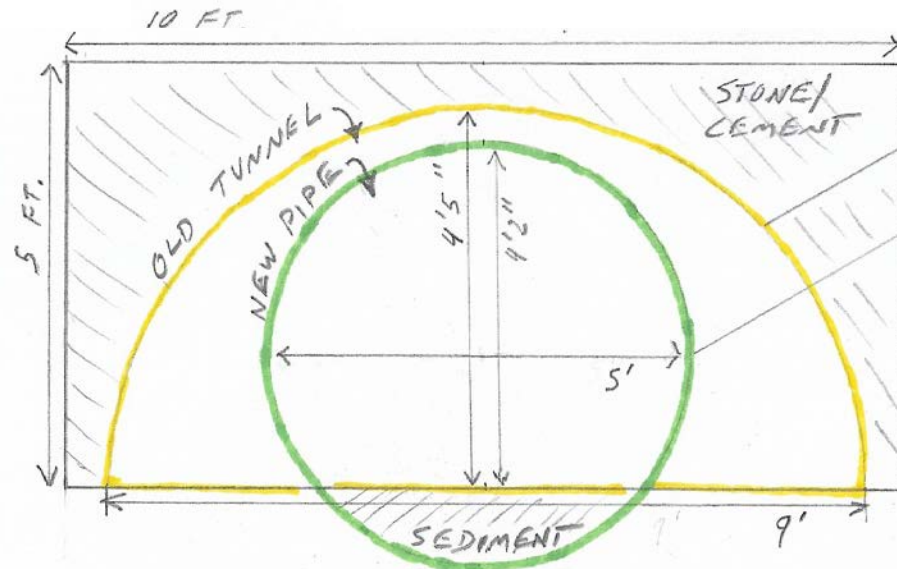


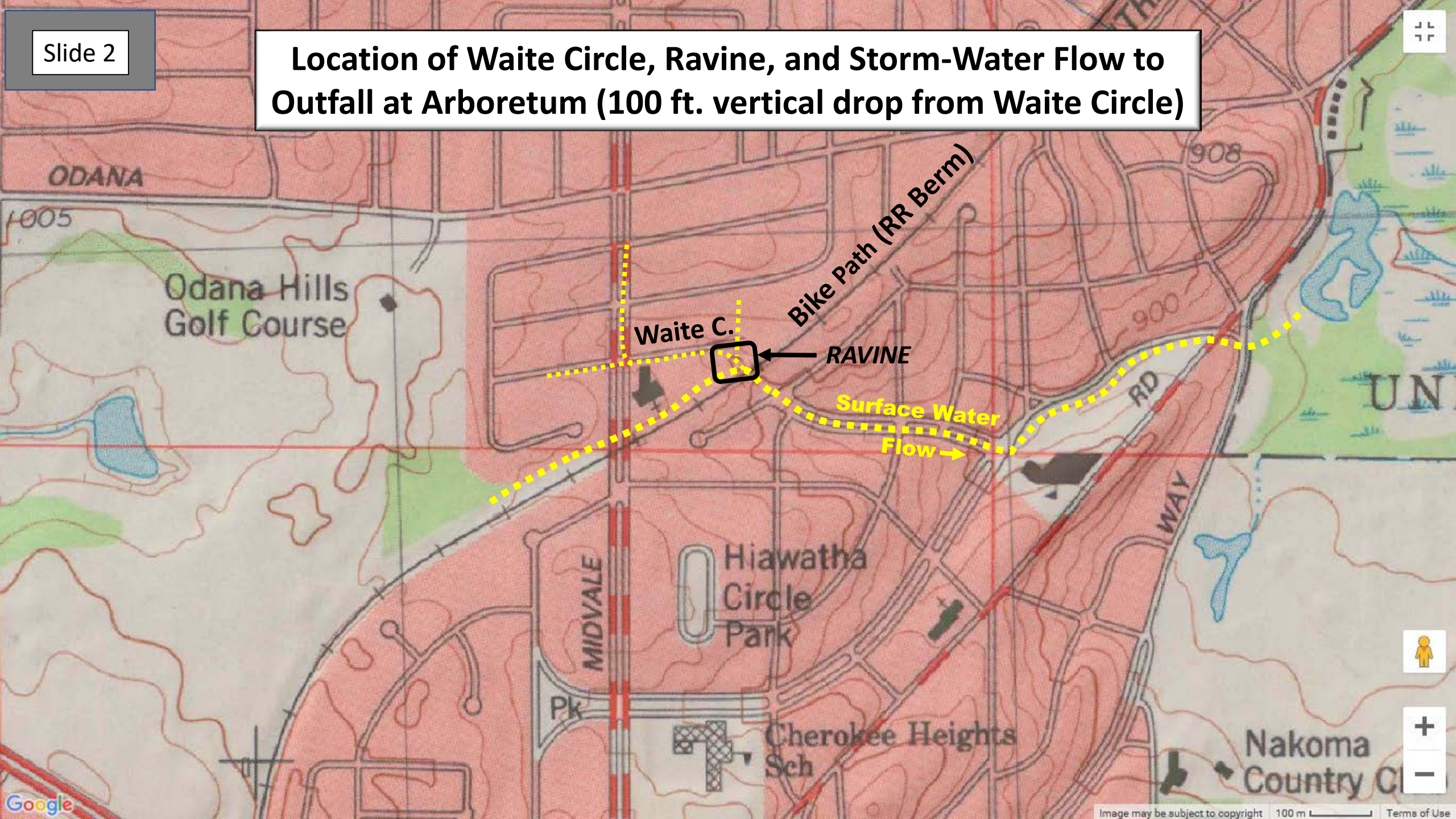
Reduction in Drainage at Bottom of Ravine (under Bike Path): Old Tunnel (Arch) replaced by Box Culvert in Fall of 2017



Old Tunnel cross-sectional area = 31.8 sf

New Pipe cross-sectional area approx 19.6 sf

Location of Waite Circle, Ravine, and Storm-Water Flow to Outfall at Arboretum (100 ft. vertical drop from Waite Circle)



Slide 3

2018 Flood Elevations as marked on Tree at top of Berm (Rim) of Ravine

Location of Bike Path
(south of Ravine)

8/20/18 Flood

6/16/18 Flood



Waite Circle

