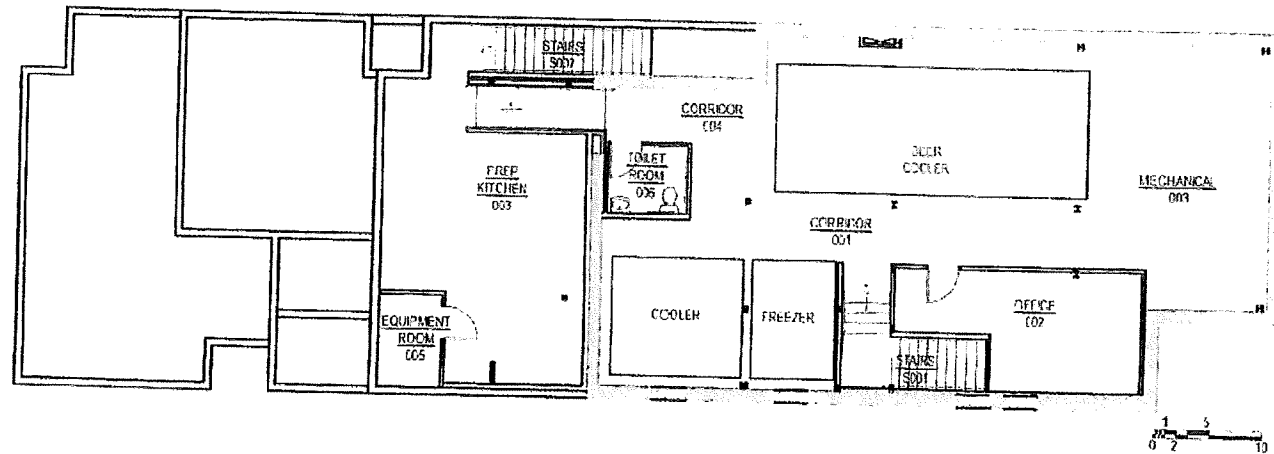


Normal World Pub

408 WEST GORHAM
MADISON, WI

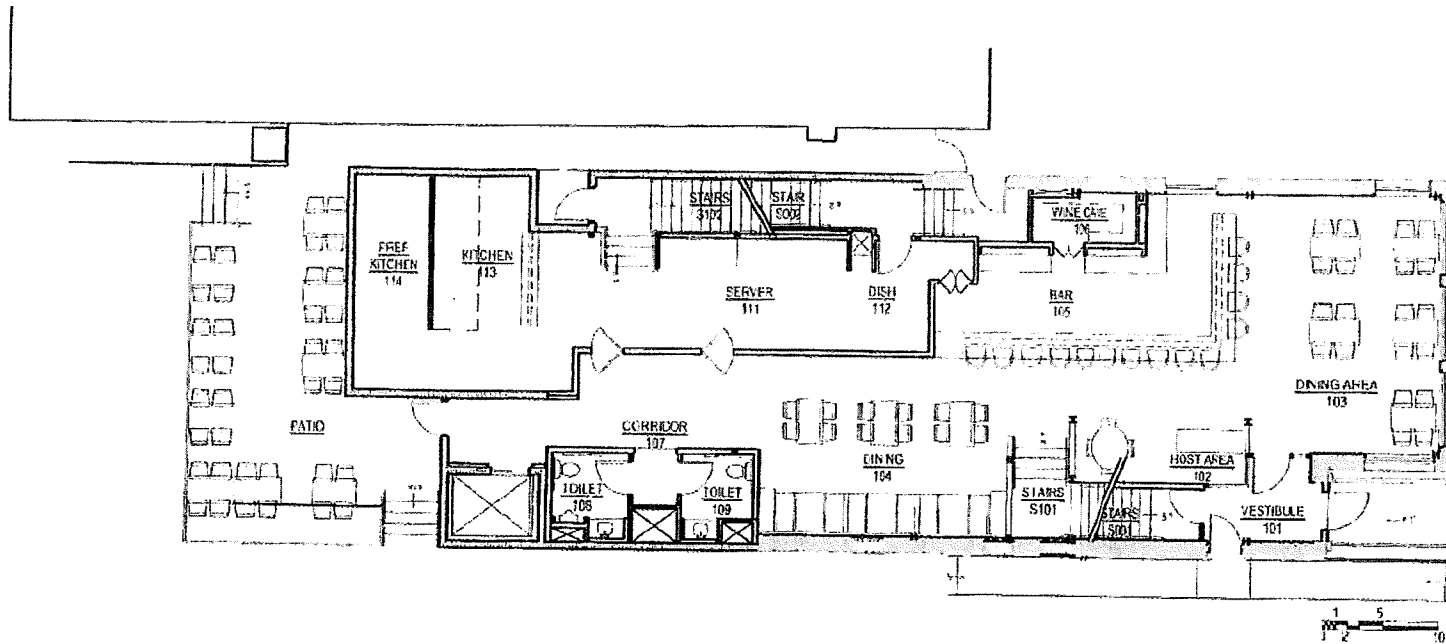


BASEMENT PLAN
1/16" = 1'-0"

SQUARE FOOTAGE
BASEMENT = 2,779 SF

Nomad World Pub

408 WEST GORHAM
MADISON, WI

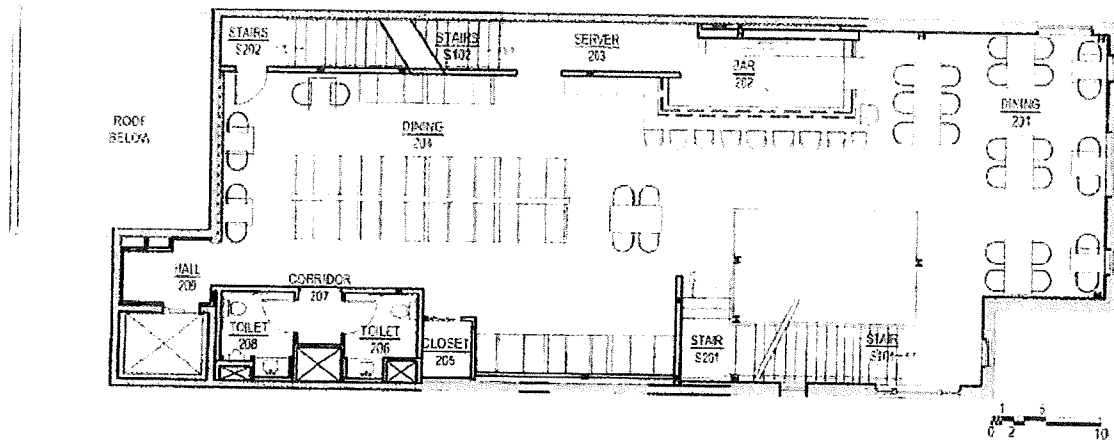


FIRST FLOOR PLAN
1/16" = 1'-0"

SQUARE FOOTAGE
FIRST FLOOR = 3,299 SF

Nomad World Pub

408 WEST GORHAM
MADISON, WI



SECOND FLOOR PLAN
1/16" = 1'-0"

SQUARE FOOTAGE
SECOND FLOOR = 2,926 SF

NOMAD WORLD PUB

408 WEST GORHAM

MADISON, WI

