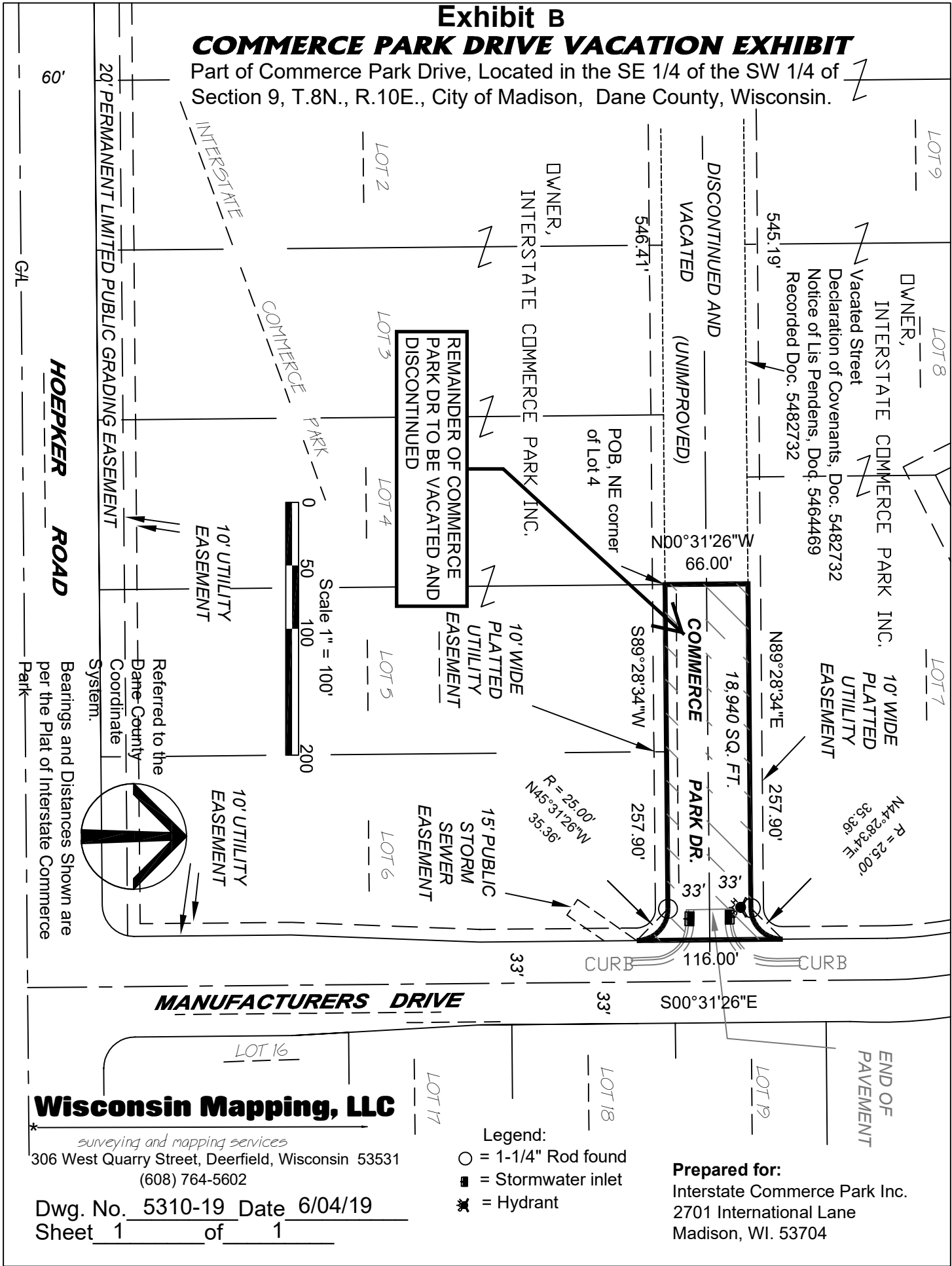


Exhibit B

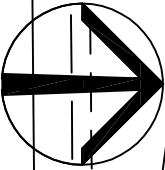
COMMERCE PARK DRIVE VACATION EXHIBIT

Part of Commerce Park Drive, Located in the SE 1/4 of the SW 1/4 of Section 9, T.8N., R.10E., City of Madison, Dane County, Wisconsin.



REMAINDER OF COMMERCE PARK DR TO BE VACATED AND DISCONTINUED

Scale 1" = 100'



Bearings and Distances Shown are per the Plat of Interstate Commerce Park

- Legend:
- = 1-1/4" Rod found
 - = Stormwater inlet
 - ✱ = Hydrant

Prepared for:
Interstate Commerce Park Inc.
2701 International Lane
Madison, WI. 53704

Wisconsin Mapping, LLC

surveying and mapping services
306 West Quarry Street, Deerfield, Wisconsin 53531
(608) 764-5602

Dwg. No. 5310-19 Date 6/04/19
Sheet 1 of 1