



Change of Premises

Fee: \$25.00

City of Madison Clerk
210 MLK Jr Blvd, Room 103
Madison, WI 53703
licensing@cityofmadison.com
608-266-4601

(Agenda Item Number)

55830

(Legistar file number)

LICPCA-2019-00320

(License number)

11

(Alder District #)

215

(Police Sector)

Office Use Only

Class A: Beer, Liquor, Cider
Class B: Beer, Liquor,
 Class C Wine

Licensed Premises Information

This application modifies existing alcohol license number: LICLIB-2018-00390

Business dba Name: bartaco

Licensed Address: 464 N. Midvale Blvd., Madison, WI 53705

Liquor/Beer Agent Name: _____

40 % Alcohol, 57.5 % Food, 2.5 % Other Alder, District #: _____ Police Sector: _____

Corporate Information

Business Legal Name (as on WI State Sellers Permit): Bartaco Hilldale, LLC

Business Mailing Address: 2900 Ranch Trail, Irving, TX 75063

Business Contact Name, Position: Legal Dept.

Business Phone: 469-913-1885 Business Email: licensing@dfrg.com

Current Capacity (indoor): 137 Current Capacity (outdoor): 70

Proposed Capacity (indoor): 137 Proposed Capacity (outdoor): 70

If your capacity is increasing, contact Building Inspection: (608) 266-4551, binspection@cityofmadison.com

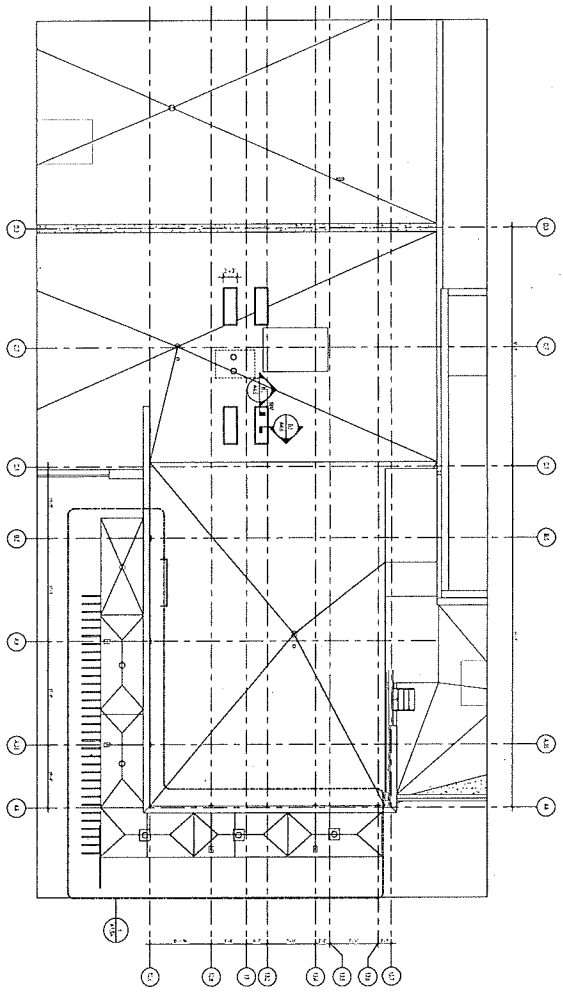
Description of Proposed Changes: Change from temporary address to permanent address

Detailed Floor Plans included (required) - No change

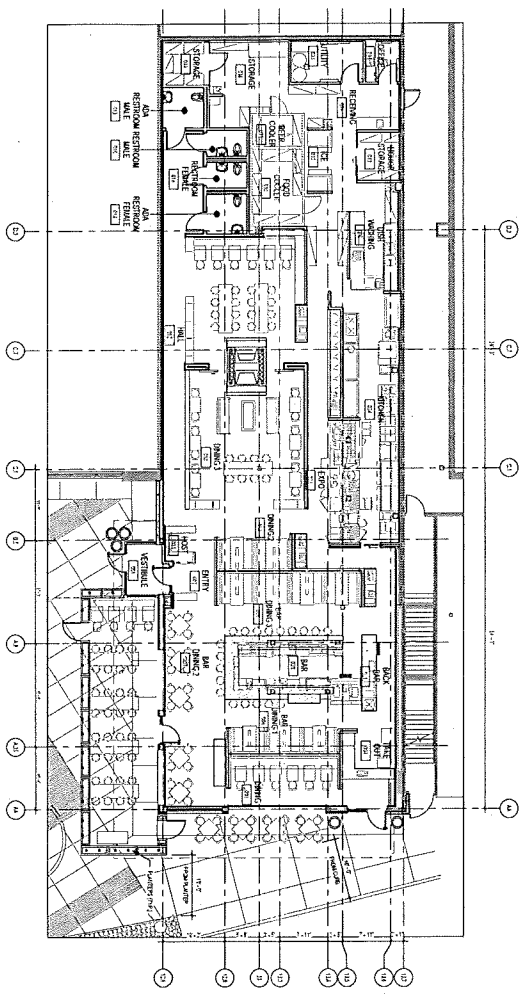
Authorized Signature William S. Martens, III, Secretary Date 12/11/2018

- Orange sign and business card issued
- "License Renewals & Changes" brochure with next steps issued

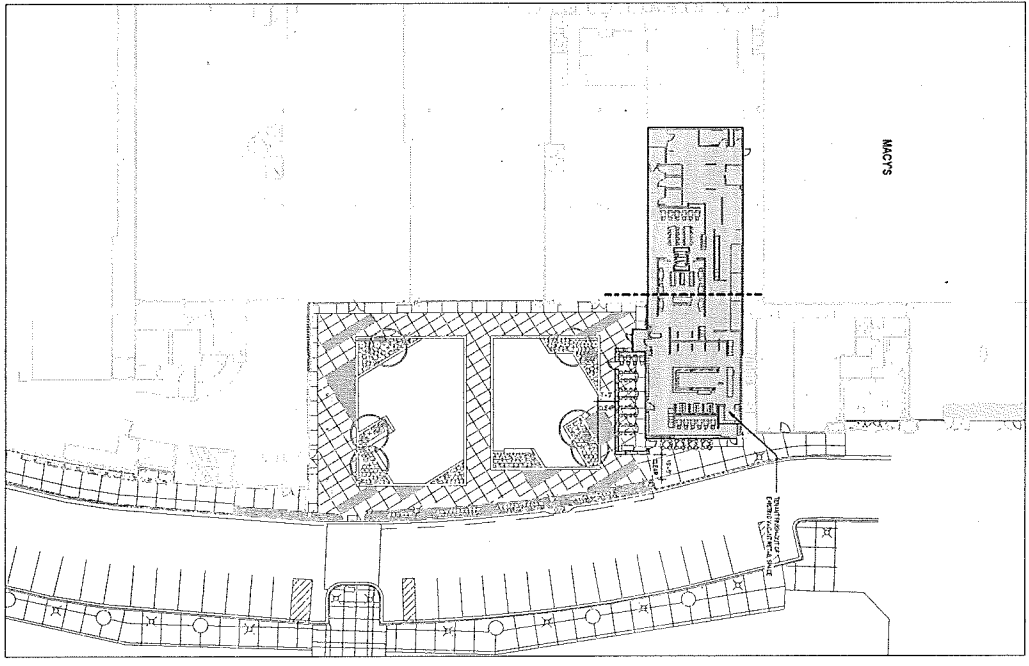
Office Use Only



1st FLOOR
1/8" = 1'-0"



1st FLOOR
1/8" = 1'-0"



BUILDING PLAN/SITE PLAN
1/8" = 3/32"

CALLISONRTKL
A 1.1.0 - 11/11/2010

CallisonRTKL, Inc.
200 SOUTH MICHIGAN AVENUE, 1800
SUITE 2000
ANN ARBOR, MI 48106-1800



BARTACO - HILLDALE MADISON, WISCONSIN

Contract/Project Address:
1000 S. Hilldale
Hilldale, WI 53122-1000
Tel: 414.224.1000

Notes:

1. See General Notes
2. See General Notes
3. See General Notes
4. See General Notes
5. See General Notes
6. See General Notes
7. See General Notes
8. See General Notes
9. See General Notes
10. See General Notes
11. See General Notes
12. See General Notes
13. See General Notes
14. See General Notes
15. See General Notes
16. See General Notes
17. See General Notes
18. See General Notes
19. See General Notes
20. See General Notes
21. See General Notes
22. See General Notes
23. See General Notes
24. See General Notes
25. See General Notes
26. See General Notes
27. See General Notes
28. See General Notes
29. See General Notes
30. See General Notes
31. See General Notes
32. See General Notes
33. See General Notes
34. See General Notes
35. See General Notes
36. See General Notes
37. See General Notes
38. See General Notes
39. See General Notes
40. See General Notes
41. See General Notes
42. See General Notes
43. See General Notes
44. See General Notes
45. See General Notes
46. See General Notes
47. See General Notes
48. See General Notes
49. See General Notes
50. See General Notes
51. See General Notes
52. See General Notes
53. See General Notes
54. See General Notes
55. See General Notes
56. See General Notes
57. See General Notes
58. See General Notes
59. See General Notes
60. See General Notes
61. See General Notes
62. See General Notes
63. See General Notes
64. See General Notes
65. See General Notes
66. See General Notes
67. See General Notes
68. See General Notes
69. See General Notes
70. See General Notes
71. See General Notes
72. See General Notes
73. See General Notes
74. See General Notes
75. See General Notes
76. See General Notes
77. See General Notes
78. See General Notes
79. See General Notes
80. See General Notes
81. See General Notes
82. See General Notes
83. See General Notes
84. See General Notes
85. See General Notes
86. See General Notes
87. See General Notes
88. See General Notes
89. See General Notes
90. See General Notes
91. See General Notes
92. See General Notes
93. See General Notes
94. See General Notes
95. See General Notes
96. See General Notes
97. See General Notes
98. See General Notes
99. See General Notes
100. See General Notes



OVERALL
BUILDING PLAN

A1.0



411 East Wisconsin Avenue
Suite 2350
Milwaukee, Wisconsin 53202-4426
414.277.5000
Fax 414.271.3552
www.quarles.com

Attorneys at Law in
Chicago
Indianapolis
Madison
Milwaukee
Naples
Phoenix
Tampa
Tucson
Washington, D.C.

Writer's Direct Dial: 414.277.5189
E-Mail: susan.lapinski@quarles.com

April 9, 2019

VIA OVERNIGHT UPS

Madison City Clerk's Office
City-County Building, Room 103
210 Martin Luther King Jr. Blvd.
Madison, WI 53703

Attn: Jim Verbick

RE: Bartaco Hilldale, LLC (d/b/a bartaco) - Hilldale Shopping Center

Dear Jim:

Enclosed are the following documents regarding the Class B liquor license referenced above:

1. City of Madison Liquor License Renewal.
2. Liquor/Beer Agent appointment form (with background investigation form, copy of driver's license and TIPS certification attached).
3. Change of Premises form to change the address on the license from the temporary address (Suite M464 Hilldale Shopping Center) to the permanent address (464 N. Midvale Blvd.).

Also, as noted on the Change of Premises form, the mailing address should be updated to 2900 Ranch Trail, Irving, Texas 75063.

Please contact me at (414) 277-5189 (or by email at susan.lapinski@quarles.com) if any additional information is needed. Thank you for your assistance.

Very truly yours,

Susan T. Lapinski
Corporate Paralegal

Enclosures
167286.00001

cc: Ms. Tanis Knelsen (w/encl - via email)
Michael D. Zeka, Esq. (w/encl - via email)

QB\56982377.1