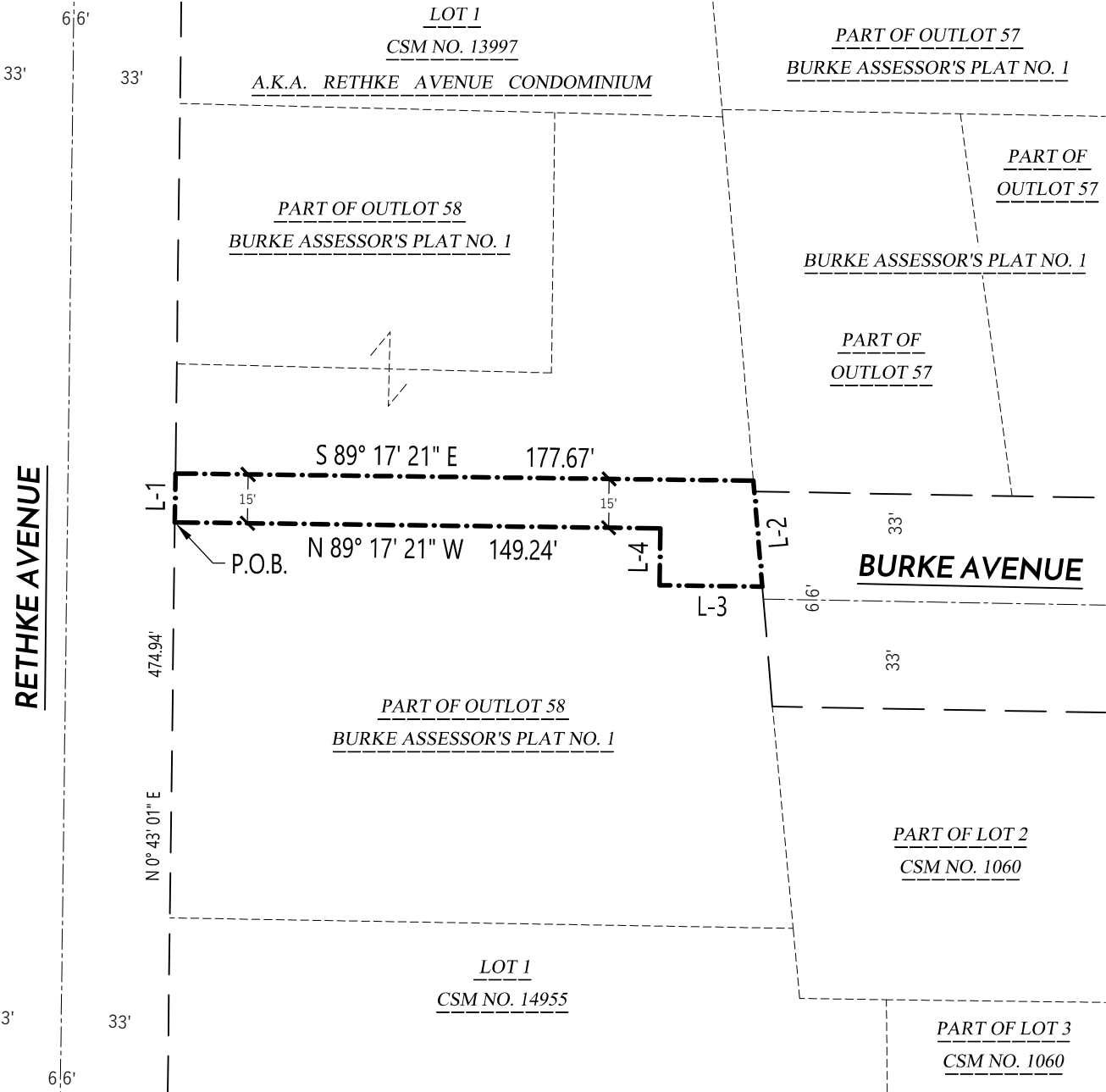


EXHIBIT C

PUBLIC PEDESTRIAN AND BIKE PATH EASEMENT

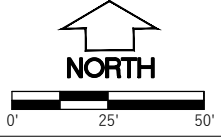
PART OF OUTLOT 58 OF BURKE ASSESSOR'S PLAT NO.1 RECORDED IN VOLUME 9 OF PLATS ON PAGES 15-21 AS DOCUMENT NO. 593673, BEING A PART OF THE THE SOUTHWEST QUARTER OF THE SOUTHEAST QUARTER OF SECTION 32, TOWN 8 NORTH, RANGE 10 EAST, CITY OF MADISON, DANE COUNTY, WISCONSIN.



LINE TABLE		
LINE #	BEARING	DISTANCE
L-1	N 0° 43' 01" E	15.00'
L-2	S 04° 49' 25" E	32.66'
L-3	N 89° 16' 45" W	31.58'
L-4	N 00° 42' 39" E	17.50'

NOTES:
 1. NORTH REFERENCE BASED ON THE WISCONSIN COUNTY COORDINATE SYSTEM, DANE ZONE, GRID NORTH, AS REFERENCED IN CSM 14955, THE LINE BETWEEN THE SOUTH 1/4 CORNER AND THE SOUTHEAST CORNER OF SECTION 32, T7N, R8E, RECORDED TO BEAR S 88° 47' 12" E MONUMENT TO MONUMENT PER SAID CSM.

LEGEND
 - - - - - SECTION LINE
 ———— RIGHT-OF-WAY LINE
 - - - - - PARCEL LINE
 - - - - - EASEMENT LINE



File: W:\2018\180563_ARCH-ADE Architects - Twisted Fitness.dwg - Twisted Fitness.dwg Layout: EASEMENT EXHIBIT.dwg User: Julie Plotthed: Feb 18, 2019 - 10:15am



PREPARED BY:
 312 EAST MAIN STREET
 MOUNT HOREB, WI 53572
www.wyserengineering.com

PREPARED FOR:
 MARK PLAVCAN
 2114 WINNEBAGO STREET
 MADISON, WI 53704

SURVEYED BY: ---
 DRAWN BY: JWS
 APPROVED BY: JWS

PROJECT NO: 180563
 SHEET NO: 1 of 1